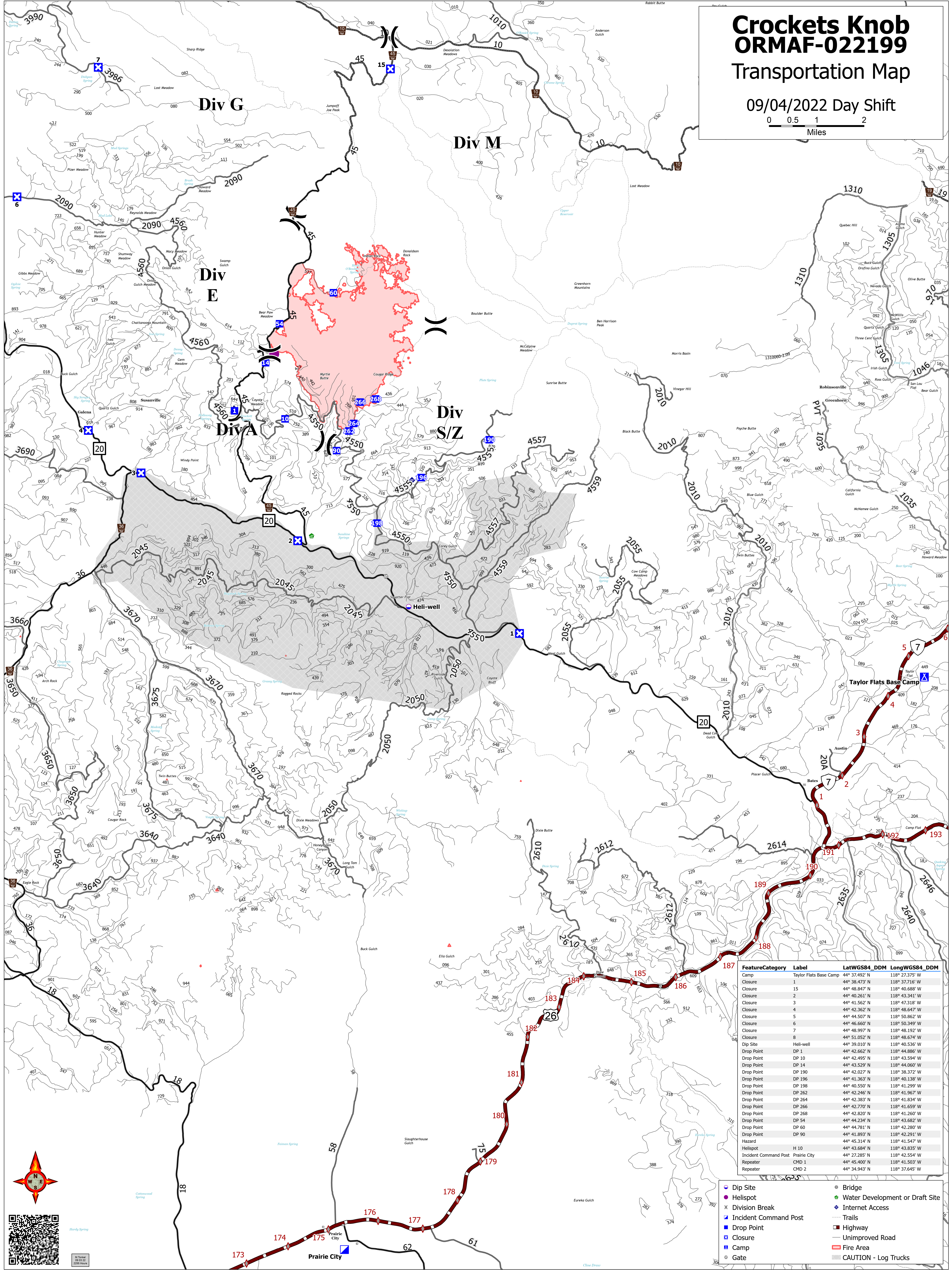


Crocketts Knob ORMAF-022199 Transportation Map

09/04/2022 Day Shift



FeatureCategory	Label	LatWGS84_DDM	LongWGS84_DDM
Camp	Taylor Flats Base Camp	44° 37.492' N	118° 37.375' W
Closure	1	44° 38.473' N	118° 37.716' W
Closure	15	44° 48.847' N	118° 40.688' W
Closure	2	44° 40.261' N	118° 43.341' W
Closure	3	44° 41.562' N	118° 47.318' W
Closure	4	44° 42.362' N	118° 48.647' W
Closure	5	44° 44.507' N	118° 50.862' W
Closure	6	44° 46.660' N	118° 50.349' W
Closure	7	44° 48.997' N	118° 48.192' W
Closure	8	44° 51.052' N	118° 48.674' W
Dip Site	Heli-well	44° 39.010' N	118° 40.536' W
Drop Point	DP 1	44° 42.662' N	118° 44.886' W
Drop Point	DP 10	44° 42.495' N	118° 43.594' W
Drop Point	DP 14	44° 43.529' N	118° 44.060' W
Drop Point	DP 190	44° 42.027' N	118° 38.372' W
Drop Point	DP 196	44° 41.363' N	118° 40.138' W
Drop Point	DP 198	44° 42.246' N	118° 41.967' W
Drop Point	DP 262	44° 42.383' N	118° 41.834' W
Drop Point	DP 264	44° 42.770' N	118° 41.659' W
Drop Point	DP 266	44° 42.770' N	118° 41.659' W
Drop Point	DP 268	44° 42.820' N	118° 41.260' W
Drop Point	DP 54	44° 44.234' N	118° 43.682' W
Drop Point	DP 60	44° 44.781' N	118° 42.280' W
Drop Point	DP 90	44° 41.893' N	118° 42.291' W
Hazard		44° 45.314' N	118° 41.547' W
HeliSpot	H 10	44° 43.684' N	118° 43.835' W
Incident Command Post	Prairie City	44° 27.285' N	118° 42.554' W
Repeater	CMD 1	44° 45.400' N	118° 41.503' W
Repeater	CMD 2	44° 34.943' N	118° 37.645' W

- Dip Site
- Bridge
- Helispot
- Water Development or Draft Site
- ⌘ Division Break
- Internet Access
- Incident Command Post
- Trails
- Drop Point
- Highway
- Closure
- Unimproved Road
- Camp
- Fire Area
- Gate
- CAUTION - Log Trucks

