

Crocketts Knob ORMAF-022199

Medical Evacuation Map

09/06/2022 Day Shift
4265 acres at 09/04/2022 @ 2134

Disclaimer:

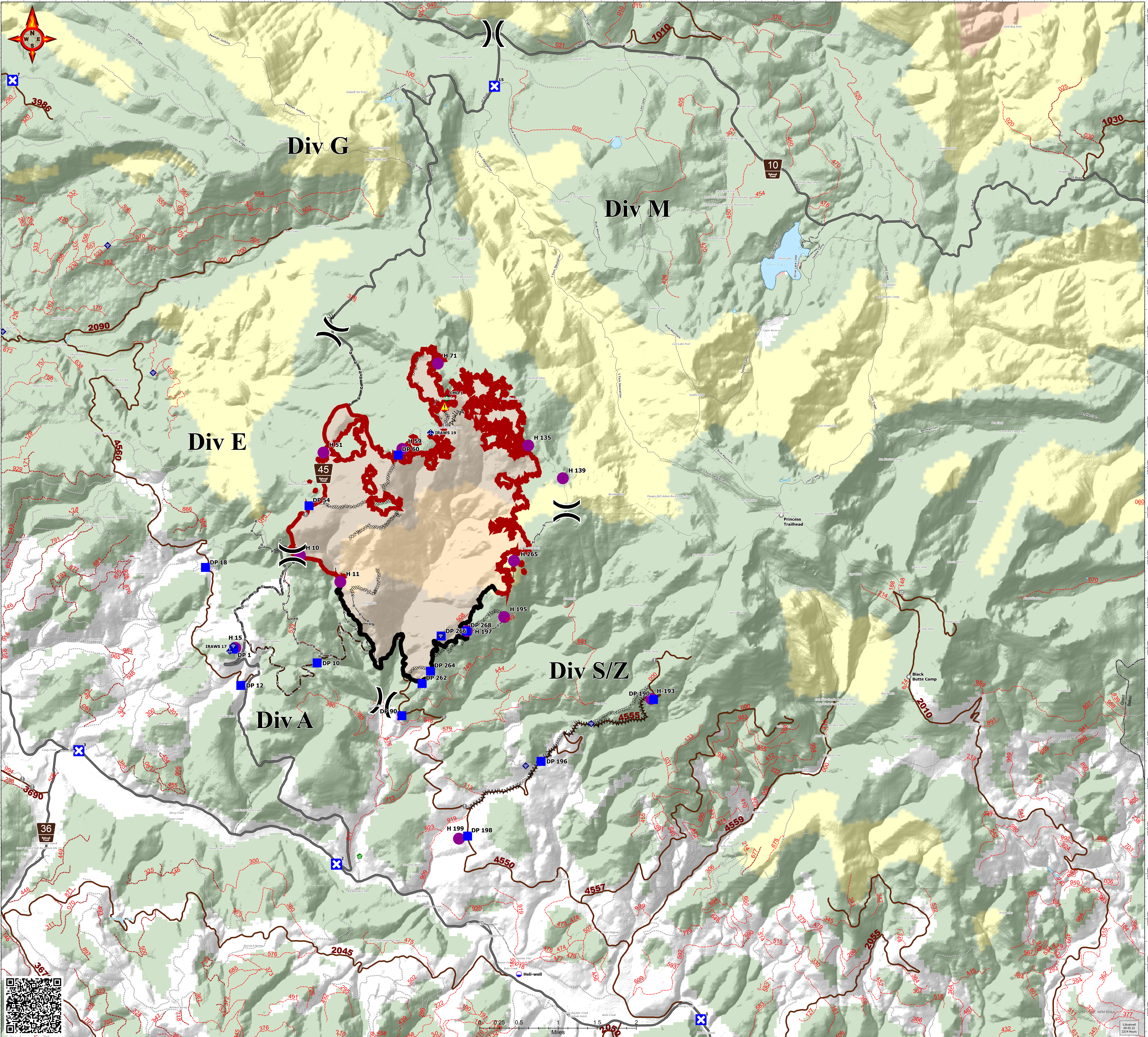
The Estimated Ground Transportation Time layer contains the estimated ground transport time in hours to a definitive care facility (hospital). This data includes both walking speeds when traveling off road and driving speeds according to the speed limit of the roads traveled. The intent of this layer is to initiate discussions regarding Agency Administrator risk tolerance and mitigation as it pertains to firefighter safety at the earliest possible opportunity in the decision making process. It is not intended to automatically deter resource deployment to any location, but to encourage thoughtful decisions about the risks being transferred to firefighters and how to mitigate those risks. This layer contains several assumptions.

- The estimate does not include the time it might take to get critical care resources to the injured employee or the time to stabilize and package the employee for transportation.
- The travel time estimate is from the moment a litter is lifted off the ground and travel begins.
- The estimate does not address the fitness of the litter crew and their ability to maintain a constant rate of travel.
- It assumes a constant rate of speed and does not account for stops for patient care or litter crew handoffs.
- It assumes an ambulance or similar mode of vehicle transportation is waiting at the closest point on a road from the injury location to begin driving immediately.
- It uses estimated rates of travel across various topography and the covering fuels.

	Dip Site		Mobile Weather Unit
	Helispot		Internet Access
	Division Break		Repeater
	Drop Point		Hazard
	Road Closure		Contained
	Value at Risk		Uncountained Fire Edge
	Other		Fire Area
	Landmark	Estimated Ground Evacuation Time	
	Gate		1 to 2 Hours
	Bridge		2 to 4 Hours
	Water Development or Draft Site		4 to 6 Hours
	Structure Wrap		More than 6 Hours

- Distance and Transport Time**
- ICP, Prairie, OR - Taylor Flats Base Camp (TFBC): 18 miles / 21 minutes
 - Austin House (44° 34.420' N, 118° 30.137' W) On Hwy 26 at Hwy 7 Junction (NW Corner)
 - Austin House - TFBC: 5 miles / 6 minutes
 - TFBC - 4520: 17 miles / 23 minutes
 - 4250 - DP1: 6 miles / 17 minutes
 - DP1 - H10: 2.5 miles / 8 minutes
 - H10 - DP54: 1.5 miles / 5 minutes
 - DP54 - DP60: 2.75 miles / 12 minutes
 - DP1 - DP10: 2.5 miles / 10 minutes
 - DP10 - DP90: 3.5 miles / 25 minutes
 - 4550 - DP40: 8 miles / 30 minutes
 - 4550 - Austin House: 11 miles / 15 minutes

Point Type	Label	Latitude WGS84 DDM	Longitude WGS84 DDM
Camp	Taylor Flats Base Camp	44° 37.492' N	118° 27.375' W
Closure	1	44° 38.473' N	118° 37.716' W
Closure	15	44° 40.947' N	118° 40.688' W
Closure	2	44° 40.261' N	118° 43.341' W
Closure	3	44° 41.562' N	118° 47.318' W
Closure	4	44° 42.362' N	118° 48.647' W
Closure	5	44° 44.507' N	118° 50.862' W
Closure	6	44° 46.660' N	118° 50.349' W
Closure	7	44° 48.997' N	118° 48.192' W
Closure	8	44° 51.052' N	118° 48.674' W
Dip Site	Hell-well	44° 39.010' N	118° 40.536' W
Division Break	Div A/E	44° 43.690' N	118° 43.952' W
Division Break	Div E/G	44° 46.156' N	118° 43.273' W
Division Break	Div G/M	44° 49.428' N	118° 40.699' W
Division Break	Div M/S	44° 44.330' N	118° 39.677' W
Division Break	Div Z/A	44° 42.043' N	118° 42.571' W
Drop Point	DP 1	44° 42.662' N	118° 44.886' W
Drop Point	DP 10	44° 42.495' N	118° 43.594' W
Drop Point	DP 12	44° 42.257' N	118° 44.787' W
Drop Point	DP 18	44° 43.570' N	118° 45.308' W
Drop Point	DP 190	44° 42.027' N	118° 38.272' W
Drop Point	DP 196	44° 41.363' N	118° 40.138' W
Drop Point	DP 198	44° 40.550' N	118° 41.299' W
Drop Point	DP 262	44° 42.246' N	118° 41.967' W
Drop Point	DP 264	44° 42.383' N	118° 41.834' W
Drop Point	DP 266	44° 42.770' N	118° 41.699' W
Drop Point	DP 268	44° 42.830' N	118° 41.260' W
Drop Point	DP 54	44° 44.234' N	118° 43.682' W
Drop Point	DP 60	44° 44.781' N	118° 42.280' W
Drop Point	DP 90	44° 41.893' N	118° 42.291' W
Hazard		44° 45.314' N	118° 41.547' W
Helispot	H-193	44° 42.035' N	118° 38.409' W
Helispot	H-10	44° 43.694' N	118° 43.835' W
Helispot	H-11	44° 43.387' N	118° 43.214' W
Helispot	H-135	44° 44.863' N	118° 40.257' W
Helispot	H-139	44° 44.494' N	118° 39.727' W
Helispot	H-15	44° 42.975' N	118° 44.864' W
Helispot	H-195	44° 42.968' N	118° 40.675' W
Helispot	H-197	44° 42.820' N	118° 41.260' W
Helispot	H-199	44° 40.523' N	118° 41.434' W
Helispot	H-265	44° 43.588' N	118° 40.508' W
Helispot	H-51	44° 44.621' N	118° 43.445' W
Helispot	H-59	44° 44.948' N	118° 42.216' W
Helispot	H-71	44° 45.787' N	118° 41.642' W
Incident Command Post	Prairie City	44° 27.285' N	118° 42.554' W
Landmark	Black Butte Camp	44° 42.232' N	118° 34.397' W
Landmark	Princess Trailhead	44° 44.043' N	118° 36.337' W
Mobile Weather Unit	IRAWS 17	44° 42.641' N	118° 44.950' W
Mobile Weather Unit	IRAWS 19	44° 45.022' N	118° 41.773' W
Repeater	CMD-3	44° 51.054' N	118° 39.878' W
Repeater	CMD-1	44° 45.400' N	118° 41.503' W
Repeater	CMD-2	44° 34.943' N	118° 37.645' W
Structure Wrap		44° 45.402' N	118° 41.514' W



Div S/Z

Div E

Div A

Div G

Div M

Black Butte Camp

Hwy 10

