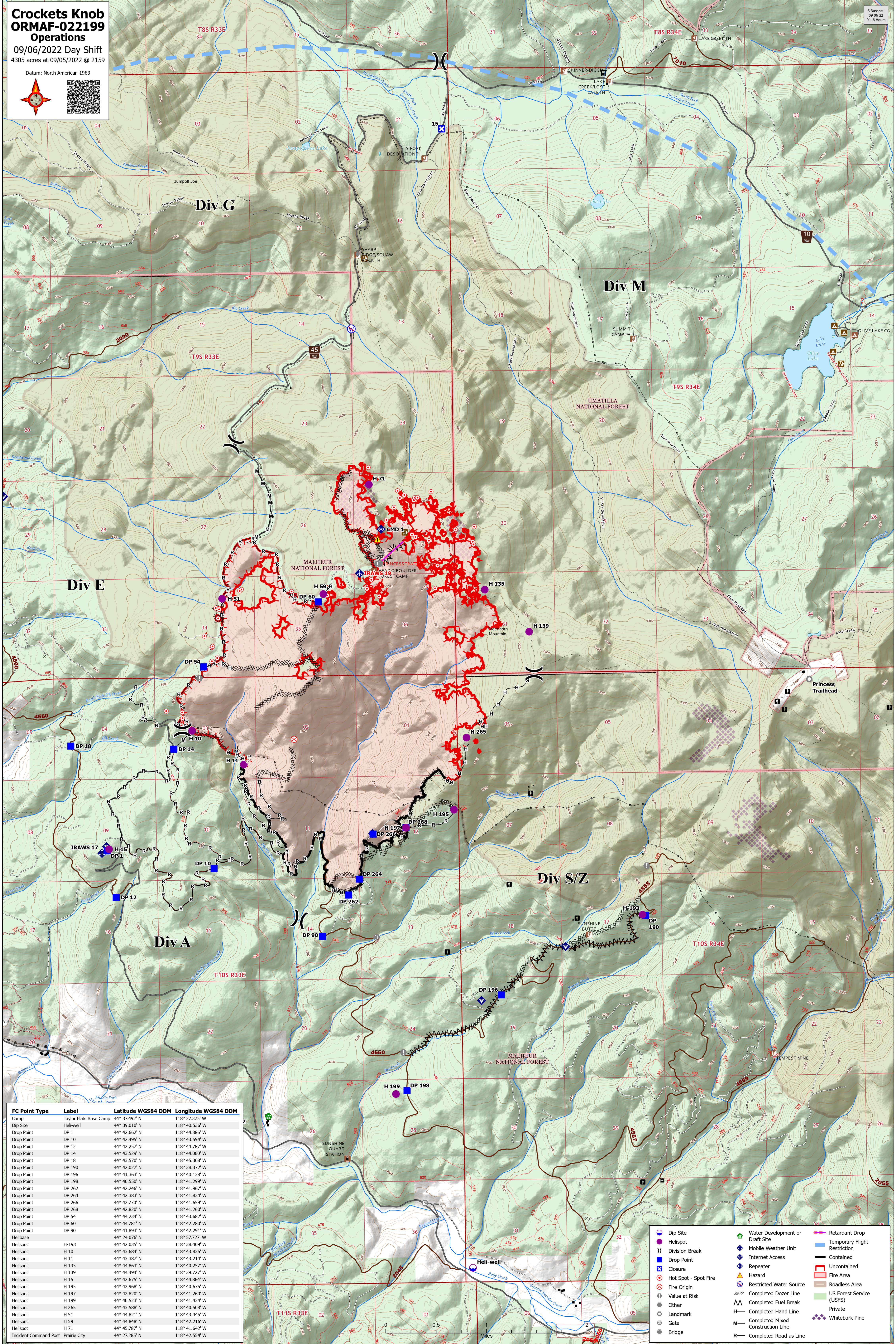


Crocketts Knob ORMAF-022199 Operations

09/06/2022 Day Shift
4305 acres at 09/05/2022 @ 2159

Datum: North American 1983



FC Point Type	Label	Latitude WGS84 DDM	Longitude WGS84 DDM
Camp	Taylor Flats Base Camp	44° 37.492' N	118° 27.375' W
Dip Site	Heli-well	44° 39.010' N	118° 40.536' W
Drop Point	DP 1	44° 42.662' N	118° 44.886' W
Drop Point	DP 10	44° 42.495' N	118° 43.594' W
Drop Point	DP 12	44° 42.257' N	118° 44.787' W
Drop Point	DP 14	44° 43.529' N	118° 44.060' W
Drop Point	DP 18	44° 43.570' N	118° 45.308' W
Drop Point	DP 190	44° 42.027' N	118° 38.372' W
Drop Point	DP 196	44° 41.363' N	118° 40.138' W
Drop Point	DP 198	44° 40.550' N	118° 41.299' W
Drop Point	DP 262	44° 42.246' N	118° 41.967' W
Drop Point	DP 264	44° 42.383' N	118° 41.834' W
Drop Point	DP 266	44° 42.770' N	118° 41.659' W
Drop Point	DP 268	44° 42.820' N	118° 41.260' W
Drop Point	DP 54	44° 44.234' N	118° 43.682' W
Drop Point	DP 60	44° 44.781' N	118° 42.280' W
Drop Point	DP 90	44° 41.893' N	118° 42.291' W
Helibase		44° 24.076' N	118° 57.727' W
Helispot	H-193	44° 42.035' N	118° 38.409' W
Helispot	H 10	44° 43.684' N	118° 43.835' W
Helispot	H 11	44° 43.387' N	118° 43.214' W
Helispot	H 135	44° 44.863' N	118° 40.257' W
Helispot	H 139	44° 44.494' N	118° 39.727' W
Helispot	H 15	44° 42.675' N	118° 44.864' W
Helispot	H 195	44° 42.968' N	118° 40.675' W
Helispot	H 197	44° 42.820' N	118° 41.260' W
Helispot	H 199	44° 40.523' N	118° 41.434' W
Helispot	H 265	44° 43.588' N	118° 40.508' W
Helispot	H 51	44° 44.821' N	118° 43.445' W
Helispot	H 59	44° 44.846' N	118° 42.216' W
Helispot	H 71	44° 45.787' N	118° 41.642' W
Incident Command Post	Prairie City	44° 27.285' N	118° 42.554' W

	Dip Site		Water Development or Draft Site		Retardant Drop
	Helispot		Mobile Weather Unit		Temporary Flight Restriction
	Division Break		Internet Access		Contained
	Drop Point		Repeater		Uncontained
	Closure		Hazard		Fire Area
	Hot Spot - Spot Fire		Restricted Water Source		Roadless Area
	Fire Origin		Completed Dozer Line		US Forest Service (USFS) Private
	Value at Risk		Completed Fuel Break		White Bark Pine
	Landmark		Completed Hand Line		
	Gate		Completed Mixed Construction Line		
	Bridge		Completed Road as Line		

