

# Crocketts Knob

ORMAF-022199

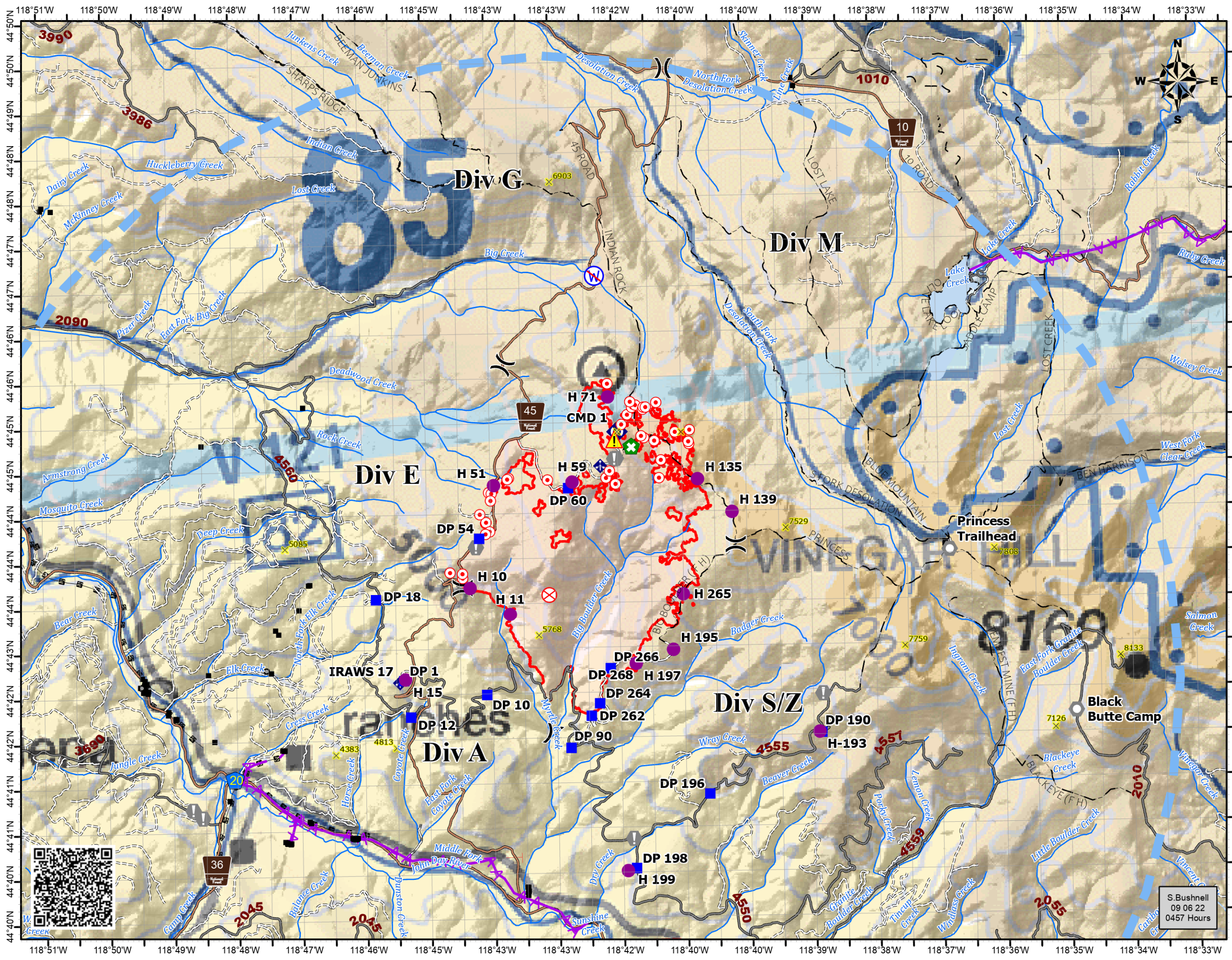
Pilot Map  
09/06/2022 Day Shift  
4305 acres at 09/05/2022 @ 2159

Datum: North American 1983  
Declination 13.9° E

US Nautical Miles  
1:72,962

- ▬ TFR 2/8108-9 (11,000 MSL)
- Helispot
- )( Division Break
- Drop Point
- ⊙ Hot Spot - Spot Fire
- ⊗ Fire Origin
- Ⓜ Value at Risk
- Ⓜ Landmark
- ⊕ Retardant in Avoidance Area
- ⬢ Mobile Weather Unit
- ⬢ Repeater
- ⚠ Hazard
- Ⓜ Restricted Water Source
- ⊗⊗ Completed Dozer Line
- ⊗ Completed Fuel Break
- M— Completed Mixed Construction Line
- R— Completed Road as Line
- ▭ Fire Area

Feature	Catego	Label	Latitude	Longitude
Camp	Taylor Flats Base Camp		44° 37.492' N	118° 27.375' W
Dip Site	Heli-well		44° 39.010' N	118° 40.536' W
Helibase			44° 24.076' N	118° 57.727' W
Helispot		H-193	44° 42.035' N	118° 38.409' W
Helispot		H 10	44° 43.684' N	118° 43.835' W
Helispot		H 11	44° 43.387' N	118° 43.214' W
Helispot		H 135	44° 44.863' N	118° 40.257' W
Helispot		H 139	44° 44.494' N	118° 39.727' W
Helispot		H 15	44° 42.675' N	118° 44.864' W
Helispot		H 195	44° 42.968' N	118° 40.675' W
Helispot		H 197	44° 42.820' N	118° 41.260' W
Helispot		H 199	44° 40.523' N	118° 41.434' W
Helispot		H 265	44° 43.588' N	118° 40.508' W
Helispot		H 51	44° 44.821' N	118° 43.445' W
Helispot		H 59	44° 44.848' N	118° 42.216' W
Helispot		H 71	44° 45.787' N	118° 41.642' W
Incident Command Post		Prairie City	44° 27.285' N	118° 42.554' W
Repeater		CMD-3	44° 51.054' N	118° 39.878' W
Repeater		CMD 1	44° 45.400' N	118° 41.503' W
Repeater		CMD 2	44° 34.943' N	118° 37.645' W
Restricted Water Source			44° 47.133' N	118° 41.824' W



S. Bushnell  
09 06 22  
0457 Hours