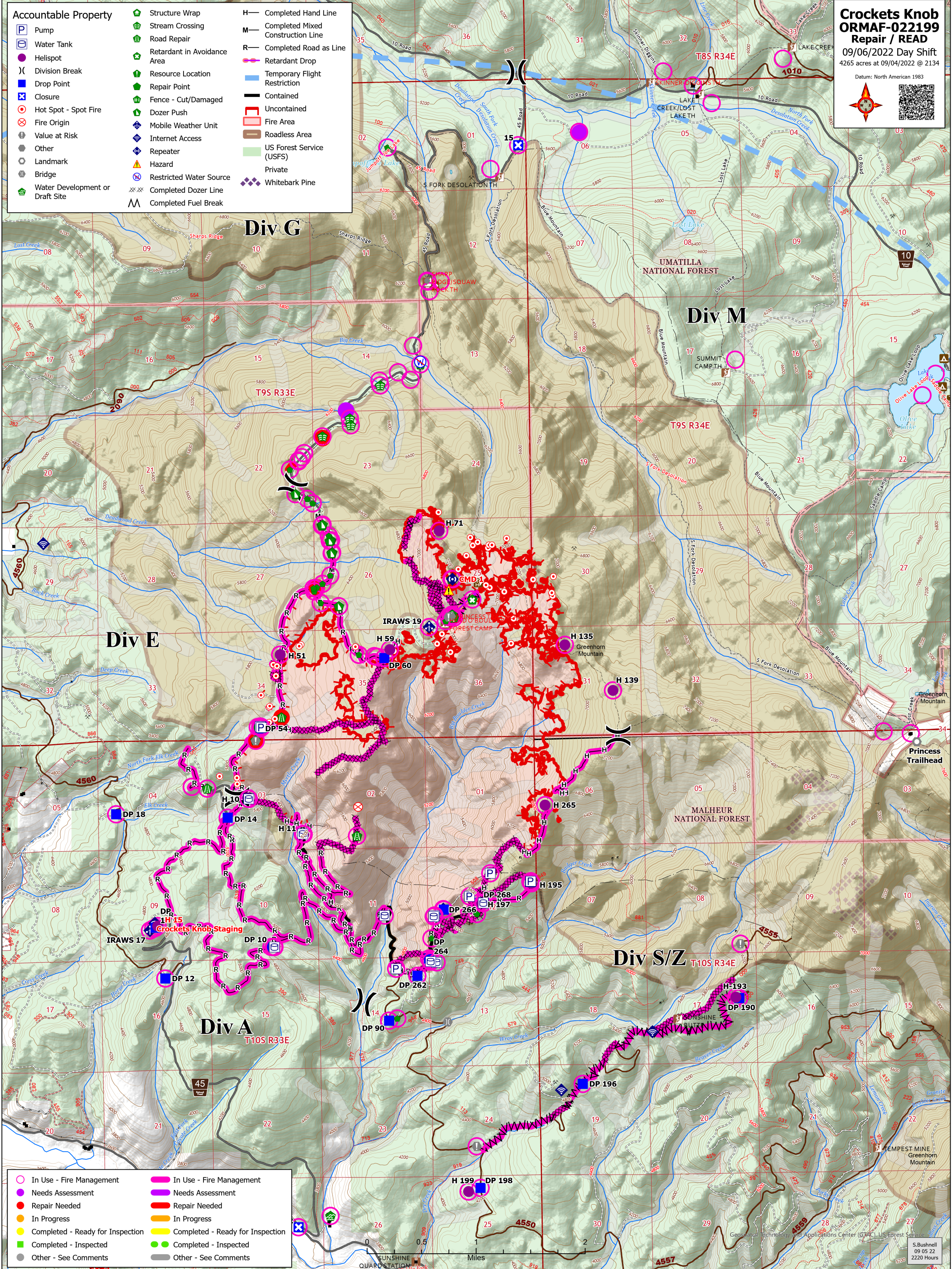




- | Accountable Property |                                   |
|----------------------|-----------------------------------|
|                      | Pump                              |
|                      | Water Tank                        |
|                      | Helispot                          |
|                      | Division Break                    |
|                      | Drop Point                        |
|                      | Closure                           |
|                      | Hot Spot - Spot Fire              |
|                      | Fire Origin                       |
|                      | Value at Risk                     |
|                      | Other                             |
|                      | Landmark                          |
|                      | Bridge                            |
|                      | Water Development or Draft Site   |
|                      | Structure Wrap                    |
|                      | Stream Crossing                   |
|                      | Road Repair                       |
|                      | Retardant in Avoidance Area       |
|                      | Resource Location                 |
|                      | Repair Point                      |
|                      | Fence - Cut/Damaged               |
|                      | Dozer Push                        |
|                      | Mobile Weather Unit               |
|                      | Internet Access                   |
|                      | Repeater                          |
|                      | Hazard                            |
|                      | Restricted Water Source           |
|                      | Completed Dozer Line              |
|                      | Completed Fuel Break              |
|                      | Completed Hand Line               |
|                      | Completed Mixed Construction Line |
|                      | Completed Road as Line            |
|                      | Retardant Drop                    |
|                      | Temporary Flight Restriction      |
|                      | Contained                         |
|                      | Uncontained                       |
|                      | Fire Area                         |
|                      | Roadless Area                     |
|                      | US Forest Service (USFS)          |
|                      | Private                           |
|                      | Whitebark Pine                    |



- |  |                                  |  |                                  |
|--|----------------------------------|--|----------------------------------|
|  | In Use - Fire Management         |  | In Use - Fire Management         |
|  | Needs Assessment                 |  | Needs Assessment                 |
|  | Repair Needed                    |  | Repair Needed                    |
|  | In Progress                      |  | In Progress                      |
|  | Completed - Ready for Inspection |  | Completed - Ready for Inspection |
|  | Completed - Inspected            |  | Completed - Inspected            |
|  | Other - See Comments             |  | Other - See Comments             |