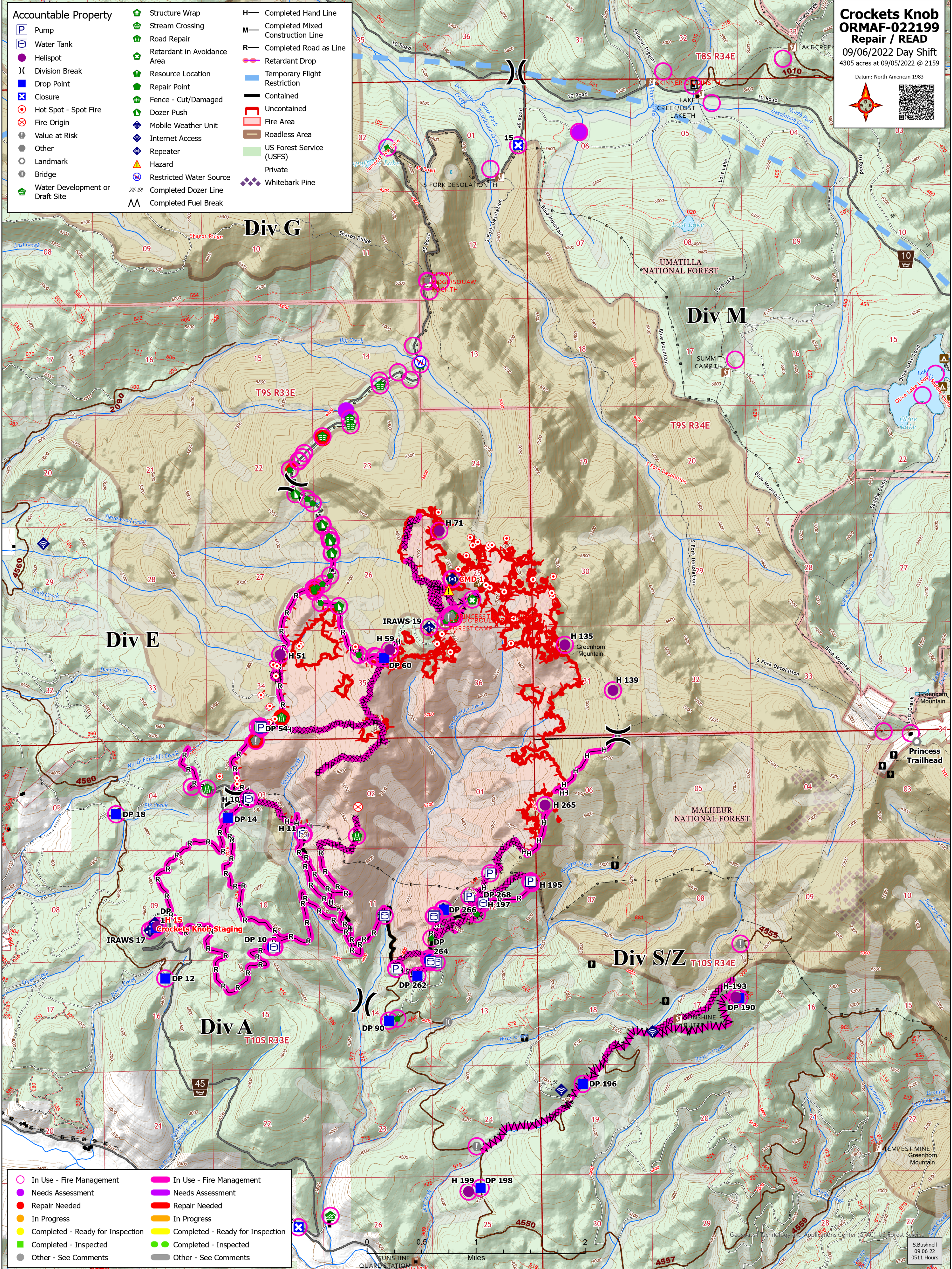




- | Accountable Property | |
|----------------------|-----------------------------------|
| | Pump |
| | Water Tank |
| | Helispot |
| | Division Break |
| | Drop Point |
| | Closure |
| | Hot Spot - Spot Fire |
| | Fire Origin |
| | Value at Risk |
| | Other |
| | Landmark |
| | Bridge |
| | Water Development or Draft Site |
| | Structure Wrap |
| | Stream Crossing |
| | Road Repair |
| | Retardant in Avoidance Area |
| | Resource Location |
| | Repair Point |
| | Fence - Cut/Damaged |
| | Dozer Push |
| | Mobile Weather Unit |
| | Internet Access |
| | Repeater |
| | Hazard |
| | Restricted Water Source |
| | Completed Dozer Line |
| | Completed Fuel Break |
| | Completed Hand Line |
| | Completed Mixed Construction Line |
| | Completed Road as Line |
| | Retardant Drop |
| | Temporary Flight Restriction |
| | Contained |
| | Uncontained |
| | Fire Area |
| | Roadless Area |
| | US Forest Service (USFS) |
| | Private |
| | Whitebark Pine |



- | | | | |
|--|----------------------------------|--|----------------------------------|
| | In Use - Fire Management | | In Use - Fire Management |
| | Needs Assessment | | Needs Assessment |
| | Repair Needed | | Repair Needed |
| | In Progress | | In Progress |
| | Completed - Ready for Inspection | | Completed - Ready for Inspection |
| | Completed - Inspected | | Completed - Inspected |
| | Other - See Comments | | Other - See Comments |