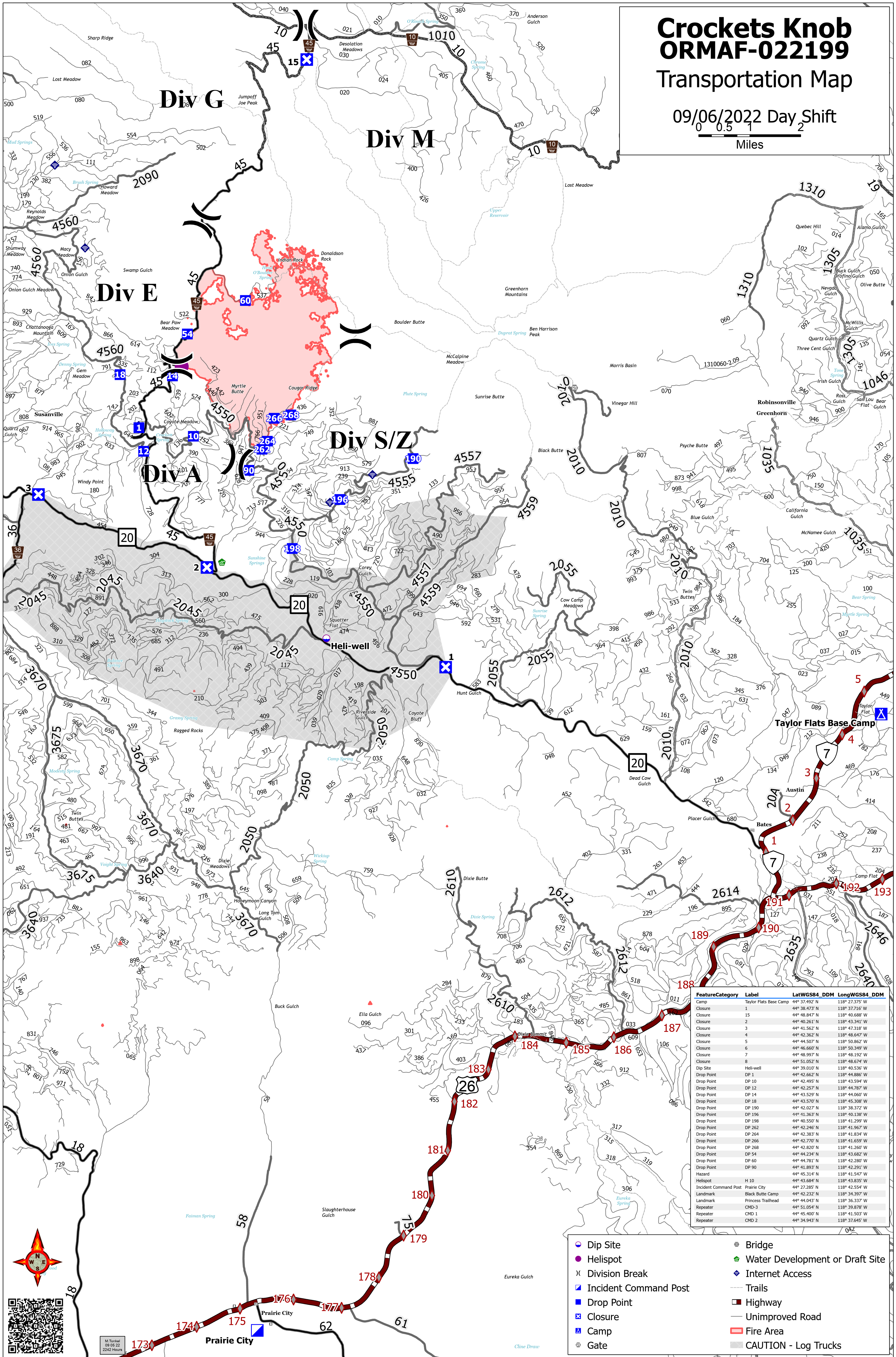


# Crocketts Knob ORMAF-022199 Transportation Map

09/06/2022 Day Shift



Feature	Category	Label	LatWGS84 DDM	LongWGS84 DDM
Camp	Taylor Flats Base Camp		44° 37.492' N	118° 27.375' W
Closure	1		44° 38.473' N	118° 37.716' W
Closure	15		44° 48.847' N	118° 40.688' W
Closure	2		44° 40.261' N	118° 43.341' W
Closure	3		44° 41.562' N	118° 47.318' W
Closure	4		44° 42.362' N	118° 48.647' W
Closure	5		44° 44.507' N	118° 50.862' W
Closure	6		44° 46.660' N	118° 52.349' W
Closure	7		44° 48.997' N	118° 48.192' W
Closure	8		44° 51.052' N	118° 48.674' W
Dip Site	Heli-well		44° 39.010' N	118° 40.536' W
Drop Point	DP 1		44° 42.662' N	118° 44.886' W
Drop Point	DP 10		44° 42.495' N	118° 43.594' W
Drop Point	DP 12		44° 42.257' N	118° 44.787' W
Drop Point	DP 14		44° 43.529' N	118° 44.060' W
Drop Point	DP 18		44° 43.570' N	118° 45.308' W
Drop Point	DP 190		44° 42.027' N	118° 38.372' W
Drop Point	DP 196		44° 41.363' N	118° 40.138' W
Drop Point	DP 198		44° 40.550' N	118° 41.299' W
Drop Point	DP 262		44° 42.246' N	118° 41.967' W
Drop Point	DP 264		44° 42.383' N	118° 41.834' W
Drop Point	DP 266		44° 42.770' N	118° 41.659' W
Drop Point	DP 268		44° 42.820' N	118° 41.260' W
Drop Point	DP 54		44° 44.234' N	118° 43.682' W
Drop Point	DP 60		44° 44.781' N	118° 42.280' W
Drop Point	DP 90		44° 41.893' N	118° 42.291' W
Hazard	H 10		44° 45.314' N	118° 41.547' W
Incident Command Post	Prairie City		44° 22.285' N	118° 42.554' W
Landmark	Black Butte Camp		44° 42.232' N	118° 34.997' W
Landmark	Princess Trailhead		44° 44.043' N	118° 36.337' W
Repeater	CMD-3		44° 51.054' N	118° 39.878' W
Repeater	CMD 1		44° 45.400' N	118° 41.503' W
Repeater	CMD 2		44° 34.943' N	118° 37.645' W

- Dip Site
- Helispot
- Division Break
- Incident Command Post
- Drop Point
- Closure
- Camp
- Gate
- Bridge
- Water Development or Draft Site
- Internet Access
- Trails
- Highway
- Unimproved Road
- Fire Area
- CAUTION - Log Trucks



M: Tonkell  
09/05/22  
2242 Hours