

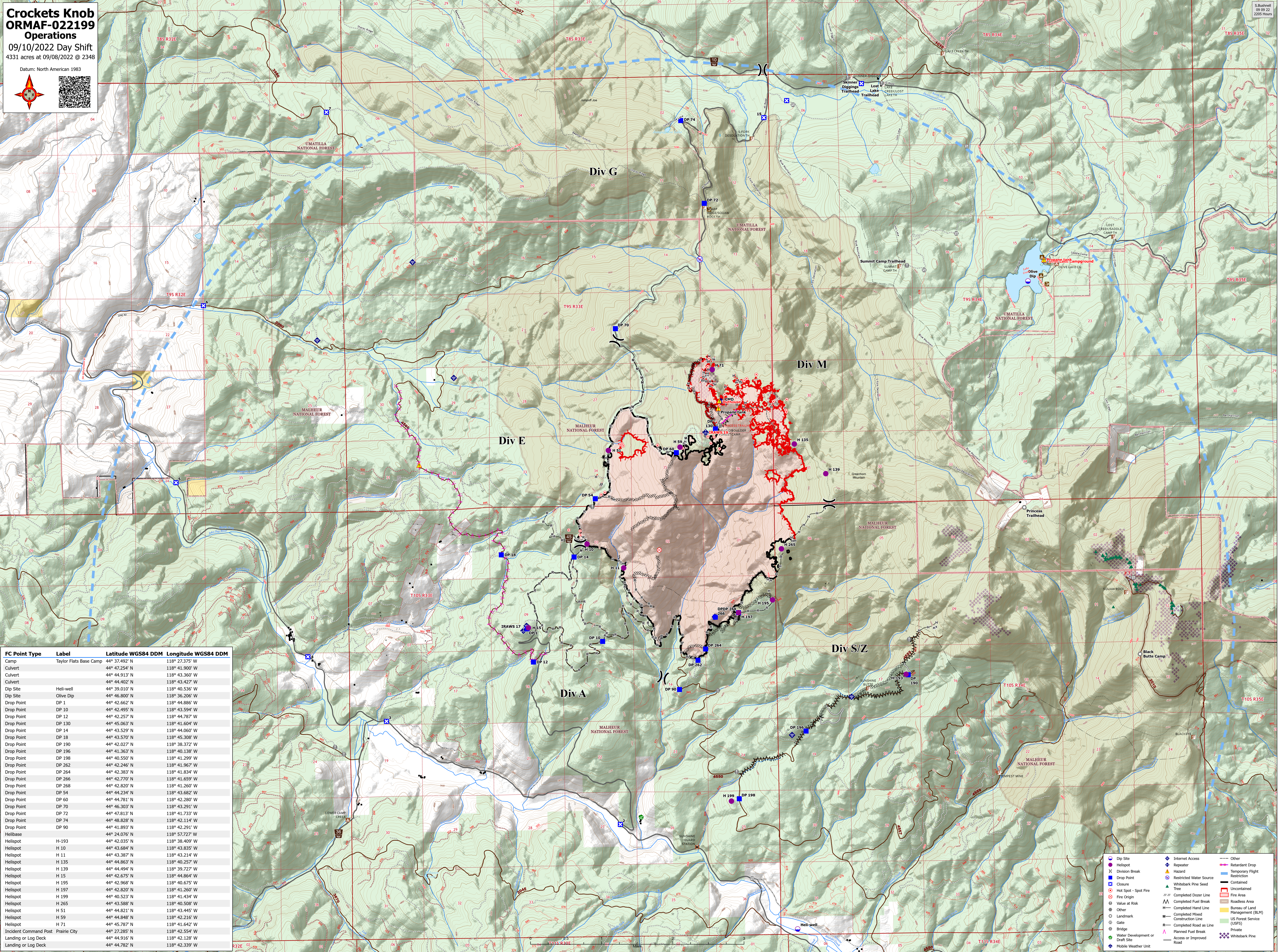
Crookets Knob ORMAF-022199 Operations

09/10/2022 Day Shift
4331 acres at 09/08/2022 @ 2348

Datum: North American 1983



S:Burnham
09 09 22
2205 Hours



| FC Point Type | Label | Latitude WGS84 DDM | Longitude WGS84 DDM |
|-----------------------|------------------------|--------------------|---------------------|
| Camp | Taylor Flats Base Camp | 44° 37.492' N | 118° 27.375' W |
| Culvert | | 44° 47.254' N | 118° 41.900' W |
| Culvert | | 44° 44.913' N | 118° 43.360' W |
| Culvert | | 44° 44.402' N | 118° 43.427' W |
| Dip Site | Heli-well | 44° 39.010' N | 118° 40.536' W |
| Dip Site | Olive Dip | 44° 46.800' N | 118° 36.206' W |
| Drop Point | DP 1 | 44° 42.662' N | 118° 44.886' W |
| Drop Point | DP 10 | 44° 42.495' N | 118° 43.594' W |
| Drop Point | DP 12 | 44° 42.257' N | 118° 44.787' W |
| Drop Point | DP 130 | 44° 45.063' N | 118° 41.604' W |
| Drop Point | DP 14 | 44° 43.523' N | 118° 44.060' W |
| Drop Point | DP 18 | 44° 43.570' N | 118° 45.308' W |
| Drop Point | DP 190 | 44° 42.027' N | 118° 38.372' W |
| Drop Point | DP 196 | 44° 41.363' N | 118° 40.138' W |
| Drop Point | DP 198 | 44° 40.550' N | 118° 41.299' W |
| Drop Point | DP 262 | 44° 42.246' N | 118° 41.967' W |
| Drop Point | DP 264 | 44° 42.383' N | 118° 41.834' W |
| Drop Point | DP 266 | 44° 42.770' N | 118° 41.659' W |
| Drop Point | DP 268 | 44° 42.820' N | 118° 41.260' W |
| Drop Point | DP 54 | 44° 44.234' N | 118° 43.682' W |
| Drop Point | DP 60 | 44° 44.781' N | 118° 42.280' W |
| Drop Point | DP 70 | 44° 46.303' N | 118° 43.291' W |
| Drop Point | DP 72 | 44° 47.813' N | 118° 41.733' W |
| Drop Point | DP 74 | 44° 48.828' N | 118° 42.114' W |
| Drop Point | DP 90 | 44° 41.893' N | 118° 42.291' W |
| Helibase | | 44° 24.076' N | 118° 57.727' W |
| Helispot | H-193 | 44° 42.035' N | 118° 38.409' W |
| Helispot | H 10 | 44° 43.684' N | 118° 43.835' W |
| Helispot | H 11 | 44° 43.387' N | 118° 43.214' W |
| Helispot | H 135 | 44° 44.863' N | 118° 40.257' W |
| Helispot | H 139 | 44° 44.494' N | 118° 39.727' W |
| Helispot | H 15 | 44° 42.675' N | 118° 44.864' W |
| Helispot | H 195 | 44° 42.960' N | 118° 40.575' W |
| Helispot | H 197 | 44° 42.820' N | 118° 41.260' W |
| Helispot | H 199 | 44° 40.523' N | 118° 41.434' W |
| Helispot | H 265 | 44° 43.588' N | 118° 40.508' W |
| Helispot | H 51 | 44° 44.821' N | 118° 43.445' W |
| Helispot | H 59 | 44° 44.848' N | 118° 42.216' W |
| Helispot | H 71 | 44° 45.787' N | 118° 41.642' W |
| Incident Command Post | Prairie City | 44° 27.285' N | 118° 42.554' W |
| Landing or Log Deck | | 44° 44.916' N | 118° 42.128' W |
| Landing or Log Deck | | 44° 44.782' N | 118° 42.339' W |

- Drop Site
- Helispot
- Division Break
- Drop Point
- Closure
- Value at Risk
- Landmark
- Gate
- Bridge
- Water Development or Draft Site
- Mobile Weather Unit
- Internet Access
- Repeater
- Hazard
- Restricted Water Source
- Whitebark Pine Seed Tree
- Completed Dozer Line
- Other
- Completed Mound Construction Line
- Completed Road as Line
- Planned Fuel Break
- Access or Improved Road
- Retardant Drop
- Temporary Flight Restriction
- Contained
- Uncontained
- Fire Area
- Roadless Area
- Bureau of Land Management (BLM)
- US Forest Service (USFS)
- Private
- Whitebark Pine