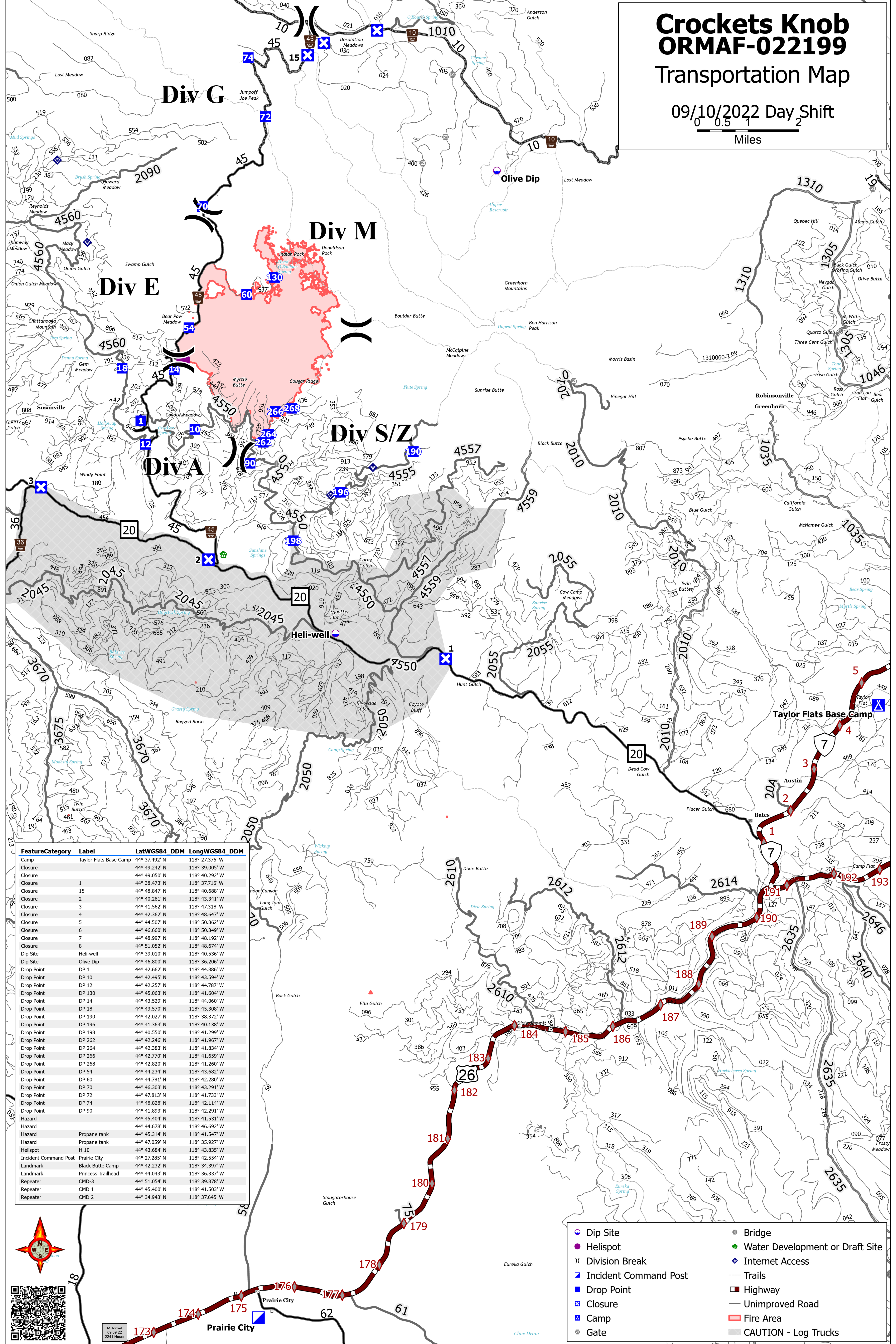


Crocketts Knob ORMAF-022199 Transportation Map

09/10/2022 Day Shift



FeatureCategory	Label	LatWGS84_DDM	LongWGS84_DDM
Camp	Taylor Flats Base Camp	44° 37.492' N	118° 27.375' W
Closure	44° 49.242' N	118° 39.005' W	
Closure	44° 49.050' N	118° 40.292' W	
Closure	44° 38.473' N	118° 37.716' W	
Closure	44° 48.847' N	118° 40.688' W	
Closure	44° 40.261' N	118° 43.341' W	
Closure	44° 41.562' N	118° 47.318' W	
Closure	44° 42.362' N	118° 48.647' W	
Closure	44° 44.507' N	118° 50.862' W	
Closure	44° 46.660' N	118° 50.349' W	
Closure	44° 48.997' N	118° 48.192' W	
Closure	44° 51.052' N	118° 48.674' W	
Dip Site	Heli-well	44° 39.010' N	118° 40.536' W
Dip Site	Olive Dip	44° 46.800' N	118° 36.206' W
Drop Point	DP 1	44° 42.662' N	118° 44.886' W
Drop Point	DP 10	44° 42.495' N	118° 43.594' W
Drop Point	DP 12	44° 42.257' N	118° 44.787' W
Drop Point	DP 130	44° 45.063' N	118° 41.604' W
Drop Point	DP 14	44° 43.529' N	118° 44.060' W
Drop Point	DP 18	44° 43.570' N	118° 45.308' W
Drop Point	DP 190	44° 42.027' N	118° 38.372' W
Drop Point	DP 196	44° 41.363' N	118° 40.138' W
Drop Point	DP 198	44° 40.550' N	118° 41.299' W
Drop Point	DP 262	44° 42.246' N	118° 41.967' W
Drop Point	DP 264	44° 42.383' N	118° 41.834' W
Drop Point	DP 266	44° 42.770' N	118° 41.659' W
Drop Point	DP 268	44° 42.820' N	118° 41.260' W
Drop Point	DP 54	44° 44.234' N	118° 43.682' W
Drop Point	DP 60	44° 44.781' N	118° 42.280' W
Drop Point	DP 70	44° 46.303' N	118° 43.291' W
Drop Point	DP 72	44° 47.813' N	118° 41.733' W
Drop Point	DP 74	44° 48.828' N	118° 42.114' W
Drop Point	DP 90	44° 41.893' N	118° 42.291' W
Hazard	44° 45.404' N	118° 41.531' W	
Hazard	44° 44.678' N	118° 46.692' W	
Hazard	Propane tank	44° 45.314' N	118° 41.547' W
Hazard	Propane tank	44° 47.059' N	118° 35.927' W
Helispot	H 10	44° 43.684' N	118° 43.835' W
Incident Command Post	Prairie City	44° 27.285' N	118° 42.554' W
Landmark	Black Butte Camp	44° 42.232' N	118° 34.397' W
Landmark	Princess Trailhead	44° 44.043' N	118° 36.337' W
Repeater	CMD-3	44° 51.054' N	118° 39.878' W
Repeater	CMD 1	44° 45.400' N	118° 41.503' W
Repeater	CMD 2	44° 34.943' N	118° 37.645' W



M: 201601
09/09/22
2241 Hours

- Dip Site
- Helispot
- Division Break
- Incident Command Post
- Drop Point
- Closure
- Camp
- Gate
- Bridge
- Water Development or Draft Site
- Internet Access
- Trails
- Highway
- Unimproved Road
- Fire Area
- CAUTION - Log Trucks