

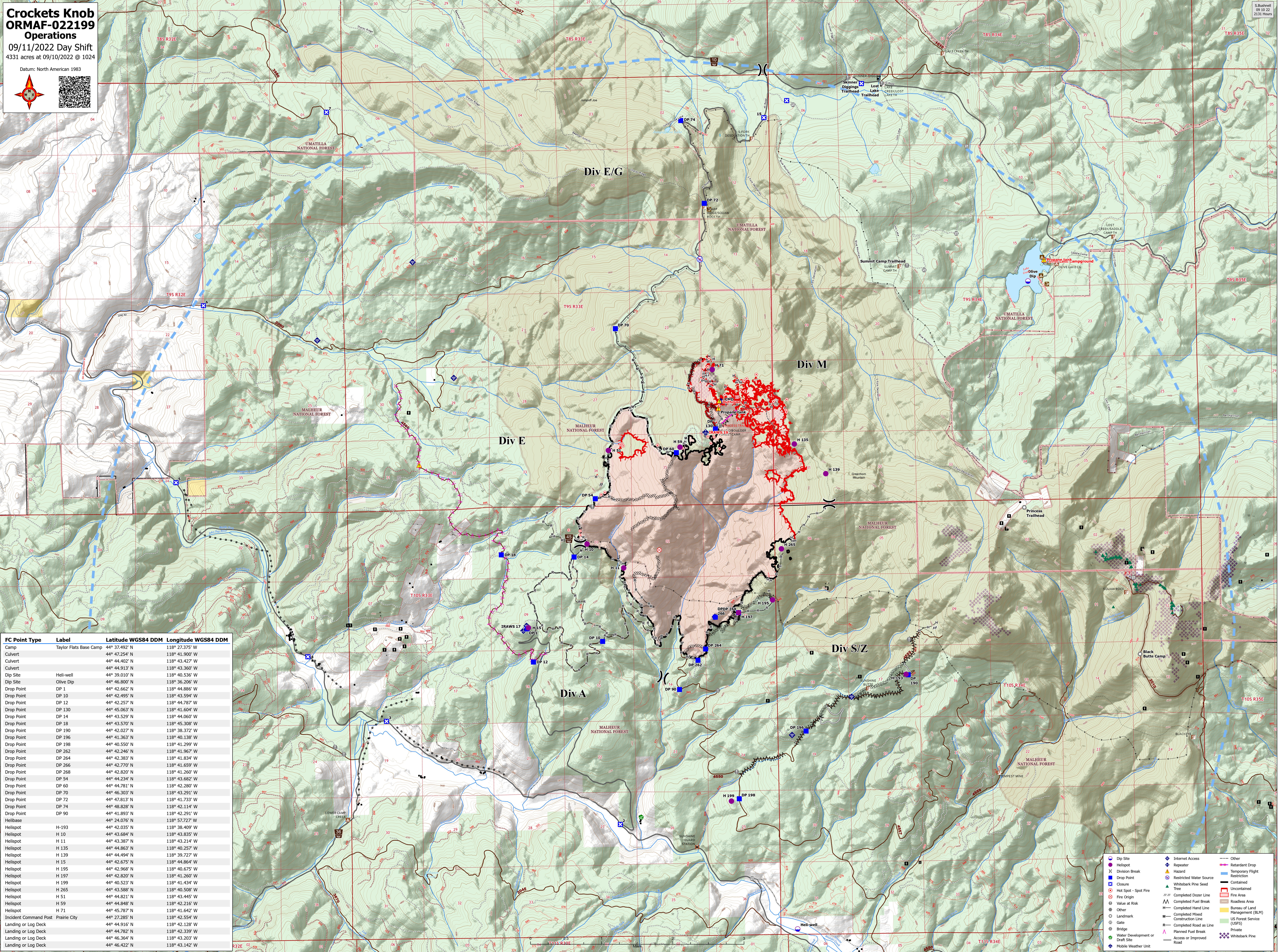
Crocketts Knob ORMAF-022199 Operations

09/11/2022 Day Shift
4331 acres at 09/10/2022 @ 1024

Datum: North American 1983



S. Burnham
09/10/22
2131 Hours



FC Point Type	Label	Latitude WGS84 DDM	Longitude WGS84 DDM
Camp	Taylor Flats Base Camp	44° 37.492' N	118° 27.375' W
Culvert		44° 47.254' N	118° 41.900' W
Culvert		44° 44.402' N	118° 43.427' W
Culvert		44° 44.913' N	118° 43.360' W
Dip Site	Heli-well	44° 39.010' N	118° 40.536' W
Dip Site	Olive Dip	44° 46.800' N	118° 36.206' W
Drop Point	DP 1	44° 42.662' N	118° 44.886' W
Drop Point	DP 10	44° 42.495' N	118° 43.594' W
Drop Point	DP 12	44° 42.257' N	118° 44.787' W
Drop Point	DP 130	44° 45.063' N	118° 41.604' W
Drop Point	DP 14	44° 43.529' N	118° 44.060' W
Drop Point	DP 18	44° 43.570' N	118° 45.308' W
Drop Point	DP 190	44° 42.027' N	118° 38.372' W
Drop Point	DP 196	44° 41.363' N	118° 40.138' W
Drop Point	DP 198	44° 40.550' N	118° 41.299' W
Drop Point	DP 262	44° 42.246' N	118° 41.967' W
Drop Point	DP 264	44° 42.383' N	118° 41.834' W
Drop Point	DP 266	44° 42.770' N	118° 41.659' W
Drop Point	DP 268	44° 42.820' N	118° 41.260' W
Drop Point	DP 54	44° 44.234' N	118° 43.682' W
Drop Point	DP 60	44° 44.781' N	118° 42.280' W
Drop Point	DP 70	44° 46.303' N	118° 43.291' W
Drop Point	DP 72	44° 47.813' N	118° 41.733' W
Drop Point	DP 74	44° 48.828' N	118° 42.114' W
Drop Point	DP 90	44° 41.893' N	118° 42.291' W
Helibase		44° 24.076' N	118° 57.727' W
Helispot	H-193	44° 42.035' N	118° 38.409' W
Helispot	H 10	44° 43.684' N	118° 43.835' W
Helispot	H 11	44° 43.387' N	118° 43.214' W
Helispot	H 135	44° 44.863' N	118° 40.257' W
Helispot	H 139	44° 44.494' N	118° 39.727' W
Helispot	H 15	44° 42.675' N	118° 44.864' W
Helispot	H 195	44° 42.968' N	118° 40.675' W
Helispot	H 197	44° 42.820' N	118° 41.260' W
Helispot	H 199	44° 40.520' N	118° 41.434' W
Helispot	H 265	44° 43.580' N	118° 40.508' W
Helispot	H 51	44° 44.821' N	118° 43.445' W
Helispot	H 59	44° 44.848' N	118° 42.216' W
Helispot	H 71	44° 45.787' N	118° 41.642' W
Incident Command Post	Prairie City	44° 27.285' N	118° 42.554' W
Landing or Log Deck		44° 44.916' N	118° 42.128' W
Landing or Log Deck		44° 44.782' N	118° 42.339' W
Landing or Log Deck		44° 46.364' N	118° 43.203' W
Landing or Log Deck		44° 46.422' N	118° 43.142' W

Dip Site	Internet Access	Retardant Drop
Helispot	Repeater	Restriction
Division Break	Hazard	Temporary Flight Restriction
Drop Point	Restricted Water Source	Contained
Closure	Whitebark Pine Seed Tree	Uncontained
Hot Spot - Spot Fire	Completed Dozer Line	Fire Area
Fire Origin	Value at Risk	Roadless Area
Completed Fuel Break	Completed Mow Construction Line	Bureau of Land Management (BLM)
Completed Fuel Break	Completed Road as Line	US Forest Service (USFS)
Planned Fuel Break	Access or Improved Road	Private
Water Development or Draft Site	Mobile Weather Unit	Whitebark Pine