

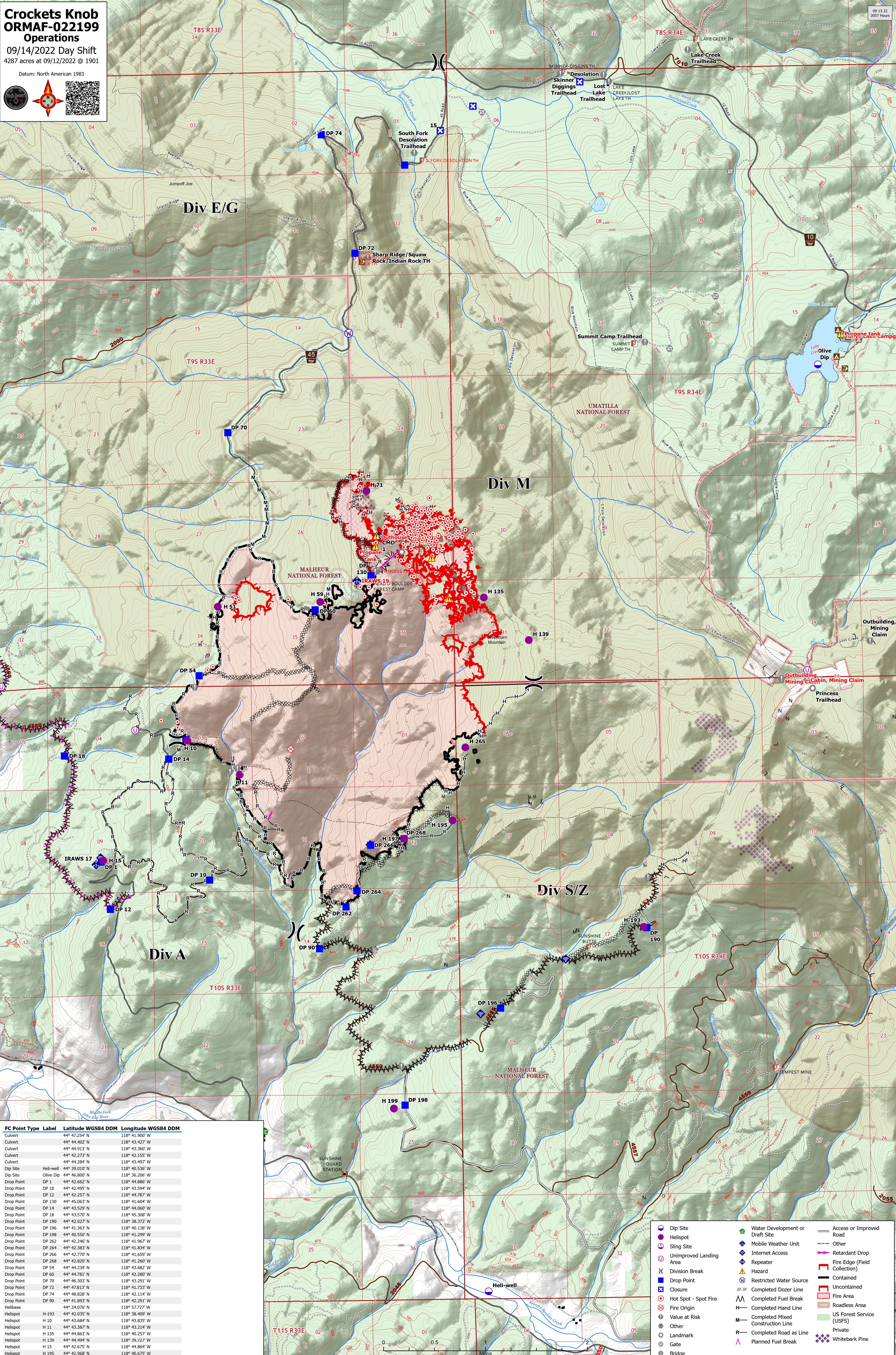
Crocketts Knob ORMAF-022199 Operations

09/14/2022 Day Shift
4287 acres at 09/12/2022 @ 1901

Datum: North American 1983



09 13 22
2037 Hours



FC Point Type	Label	Latitude WGS84 DDM	Longitude WGS84 DDM
Culvert		44° 47.254' N	118° 41.300' W
Culvert		44° 44.402' N	118° 43.427' W
Culvert		44° 44.913' N	118° 43.360' W
Culvert		44° 42.273' N	118° 42.155' W
Culvert		44° 44.284' N	118° 43.497' W
Dip Site	Heli-well	44° 39.010' N	118° 40.536' W
Dip Site	Olive Dip	44° 46.800' N	118° 36.206' W
Drop Point	DP 1	44° 42.662' N	118° 44.886' W
Drop Point	DP 10	44° 42.495' N	118° 43.594' W
Drop Point	DP 12	44° 42.257' N	118° 44.787' W
Drop Point	DP 130	44° 45.063' N	118° 41.604' W
Drop Point	DP 14	44° 43.529' N	118° 44.066' W
Drop Point	DP 18	44° 43.570' N	118° 45.308' W
Drop Point	DP 190	44° 42.027' N	118° 38.372' W
Drop Point	DP 196	44° 41.363' N	118° 40.138' W
Drop Point	DP 198	44° 40.550' N	118° 41.299' W
Drop Point	DP 262	44° 42.246' N	118° 41.967' W
Drop Point	DP 264	44° 42.383' N	118° 41.834' W
Drop Point	DP 266	44° 42.770' N	118° 41.659' W
Drop Point	DP 268	44° 42.820' N	118° 41.260' W
Drop Point	DP 54	44° 44.234' N	118° 43.682' W
Drop Point	DP 60	44° 44.781' N	118° 42.288' W
Drop Point	DP 70	44° 45.303' N	118° 42.291' W
Drop Point	DP 72	44° 47.813' N	118° 41.733' W
Drop Point	DP 74	44° 48.828' N	118° 42.114' W
Drop Point	DP 90	44° 41.893' N	118° 42.291' W
Hellbase		44° 24.076' N	118° 57.727' W
Hellspot	H-193	44° 42.035' N	118° 38.409' W
Hellspot	H 10	44° 43.684' N	118° 43.835' W
Hellspot	H 11	44° 43.387' N	118° 43.214' W
Hellspot	H 135	44° 44.863' N	118° 40.257' W
Hellspot	H 139	44° 44.494' N	118° 39.727' W
Hellspot	H 15	44° 42.675' N	118° 44.864' W
Hellspot	H 195	44° 42.968' N	118° 40.675' W

	Dip Site		Water Development or Draft Site		Access or Improved Road
	Heli-spot		Mobile Weather Unit		Other
	Sling Site		Repeater		Retardant Drop
	Unimproved Landing Area		Hazard		Fire Edge (Field Collection)
	Division Break		Restricted Water Source		Contained
	Drop Point		Completed Dozer Line		Uncontained
	Closure		Completed Fuel Break		Fire Area
	Hot Spot - Spot Fire		Completed Hand Line		Roadless Area
	Fire Origin		Completed Mixed Construction Line		US Forest Service (USFS)
	Value at Risk		Planned Fuel Break		Private
	Other				Whitebark Pine
	Landmark				
	Gate				
	Bridge				