
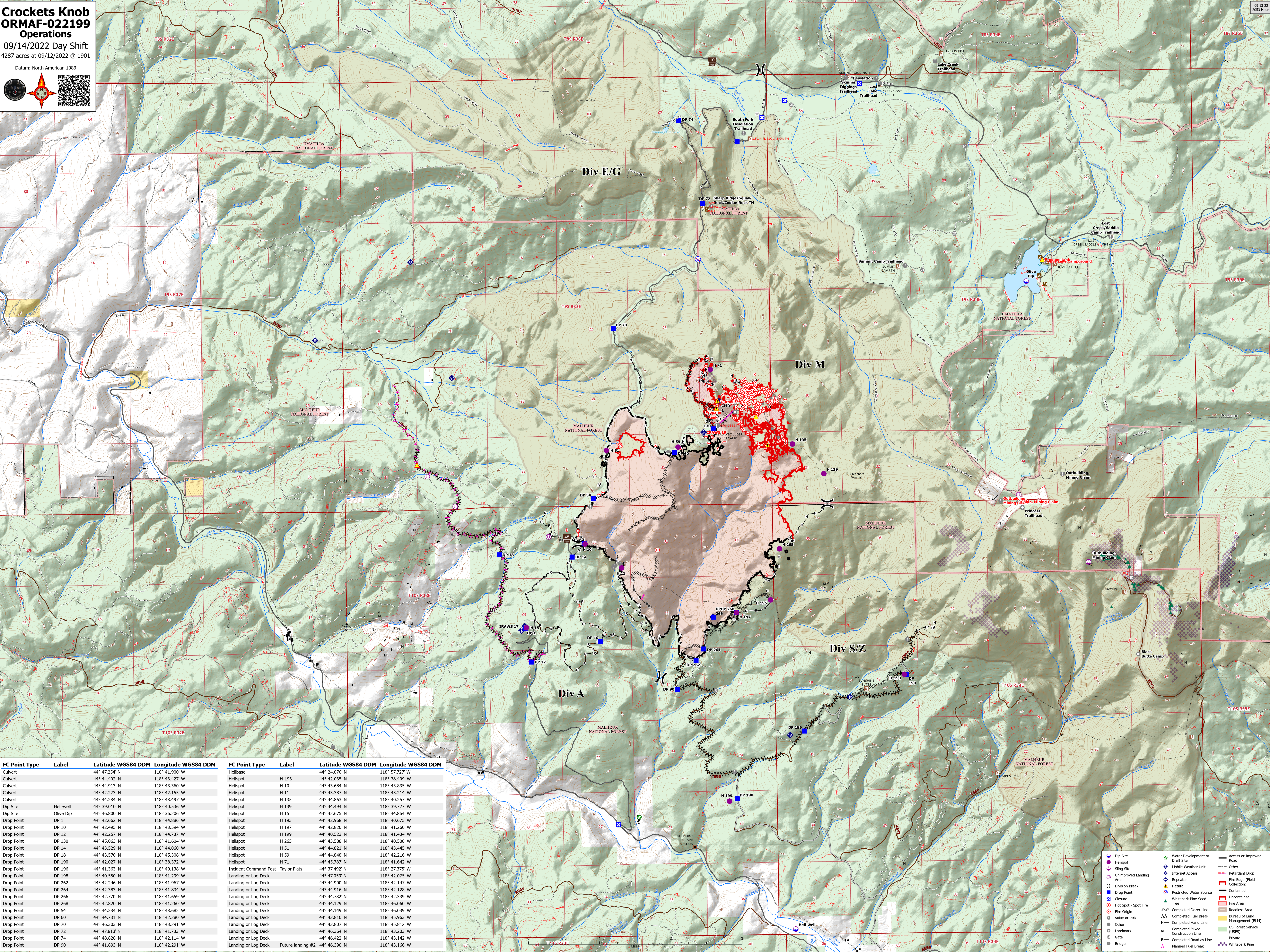


**Crocketts Knob
ORMAF-022199
Operations**

09/14/2022 Day Shift
4287 acres at 09/12/2022 @ 1901

Datum: North American 1983

FC Point Type	Label	Latitude WGS84 DDM	Longitude WGS84 DDM	FC Point Type	Label	Latitude WGS84 DDM	Longitude WGS84 DDM
Culvert		44° 47.254' N	118° 41.900' W	Helibase		44° 24.076' N	118° 57.727' W
Culvert		44° 44.402' N	118° 43.427' W	Helispot	H-193	44° 42.035' N	118° 38.409' W
Culvert		44° 44.913' N	118° 43.360' W	Helispot	H 10	44° 43.684' N	118° 43.835' W
Culvert		44° 42.273' N	118° 42.155' W	Helispot	H 11	44° 43.387' N	118° 43.214' W
Culvert		44° 44.284' N	118° 43.497' W	Helispot	H 135	44° 44.863' N	118° 40.257' W
Dip Site	Heli-well	44° 39.010' N	118° 40.536' W	Helispot	H 139	44° 44.494' N	118° 39.727' W
Dip Site	Olive Dip	44° 46.800' N	118° 36.206' W	Helispot	H 15	44° 42.675' N	118° 44.864' W
Drop Point	DP 1	44° 42.662' N	118° 44.886' W	Helispot	H 195	44° 42.968' N	118° 40.675' W
Drop Point	DP 10	44° 42.495' N	118° 43.594' W	Helispot	H 197	44° 42.820' N	118° 41.260' W
Drop Point	DP 12	44° 42.257' N	118° 44.787' W	Helispot	H 199	44° 40.523' N	118° 41.434' W
Drop Point	DP 130	44° 45.063' N	118° 41.604' W	Helispot	H 265	44° 43.588' N	118° 40.508' W
Drop Point	DP 14	44° 43.529' N	118° 44.060' W	Helispot	H 51	44° 44.821' N	118° 43.445' W
Drop Point	DP 18	44° 43.570' N	118° 45.308' W	Helispot	H 59	44° 44.848' N	118° 42.216' W
Drop Point	DP 190	44° 42.027' N	118° 38.372' W	Helispot	H 71	44° 45.787' N	118° 41.642' W
Drop Point	DP 196	44° 41.363' N	118° 40.138' W	Incident Command Post	Taylor Flats	44° 37.492' N	118° 27.175' W
Drop Point	DP 198	44° 40.550' N	118° 41.299' W	Landing or Log Deck		44° 47.053' N	118° 42.075' W
Drop Point	DP 262	44° 42.246' N	118° 41.967' W	Landing or Log Deck		44° 44.900' N	118° 42.147' W
Drop Point	DP 264	44° 42.383' N	118° 41.834' W	Landing or Log Deck		44° 44.916' N	118° 42.128' W
Drop Point	DP 266	44° 42.770' N	118° 41.659' W	Landing or Log Deck		44° 44.782' N	118° 42.339' W
Drop Point	DP 268	44° 42.820' N	118° 41.129' W	Landing or Log Deck		44° 44.129' N	118° 46.260' W
Drop Point	DP 54	44° 44.234' N	118° 43.682' W	Landing or Log Deck		44° 44.149' N	118° 46.039' W
Drop Point	DP 60	44° 44.781' N	118° 42.810' W	Landing or Log Deck		44° 43.810' N	118° 45.963' W
Drop Point	DP 70	44° 46.303' N	118° 43.291' W	Landing or Log Deck		44° 43.807' N	118° 45.812' W
Drop Point	DP 72	44° 47.813' N	118° 41.733' W	Landing or Log Deck		44° 46.364' N	118° 43.203' W
Drop Point	DP 74	44° 48.828' N	118° 42.114' W	Landing or Log Deck		44° 42.422' N	118° 43.142' W
Drop Point	DP 90	44° 41.893' N	118° 42.291' W	Landing or Log Deck	Future landing #2	44° 46.390' N	118° 43.166' W

- Dip Site
- Helispot
- Sling Site
- Unimproved Landing Area
- Division Break
- Drop Point
- Closure
- Hot Spot - Spot Fire
- Fire Origin
- Value at Risk
- Other
- Landmark
- Gate
- Bridge
- Water Development or Draft Site
- Mobile Weather Unit
- Internet Access
- Repeater
- Hazard
- Restricted Water Source
- Whitebark Pine Seed Tree
- Completed Dozer Line
- Completed Mixed Construction Line
- Completed Hand Line
- Completed Road as Line
- Planned Fuel Break
- Access or Improved Road
- Other
- Retardant Drop
- Fire Edge (Field Collection)
- Fire Area
- Contaminated
- Uncontaminated
- Fire Area
- Roadless Area
- Bureau of Land Management (BLM)
- US Forest Service (USFS)
- Private
- Whitebark Pine