

Incident Action Plan Crookets Knob

September 2, 2022

Operational Period 0600-1800



SCAN QR for BRIEFING

- OR -

PHONE - 833 568 8864

Meeting ID: 160 329 1397

Passcode: 252064

- AND/OR -

RADIO BRIEFING

Channel 2 – CMD 2



DOWNLOAD
MAPS and IAP




Scan to CHECK IN
Or Call
(971) 713-1198

OR-MAF-022199

P6 P0XK (0604)

221 IWR

ORGANIZATION ASSIGNMENT LIST (ICS 203)

1. Incident Name:		2. Operational Period: DAY	
CROCKETS KNOB		Date/Time From: 09/02/2022 0600 FRI	Date/Time To: 09/02/2022 1800 FRI
3. Incident Commander(s) and Command Staff:			
IC/UC	JEFF DIMKE JEFF BOUSCHOR (T)	SUPPLY UNIT	JOHN KAUPA THAD FRATER
DEPUTY	BOB SHINDELAR	GROUND SUPPORT UNIT	DAVE HARSH
SAFETY OFFICER	TROY CORN; JACK CATES ERIC MILLER (T)	COMMUNICATIONS UNIT	MISSY PARKER JOHN LYONS (T)
INFORMATION OFFICER	JOEL BRUMM LIV STECKER	MEDICAL UNIT	EAMONN RYAN DIANA BRAUN
LIAISON OFFICER	SCOTT CRAWFORD JEFF SEVIGNEY (T)	SECURITY UNIT	TOM TAYLOR JOE ROBERTSON (T)
HUMAN RESOURCE SPECIALIST	SUSIE MANEZES (ICP) JON TIPTON (TF) (T)	FOOD UNIT	ALEX LILLA
4. Agency/Organization Representative(s):		7. Operations Section:	
Agency/Organization	Name	OPS SECTION CHIEF	AARON ROWE JEROMY WILSON (T)
USFS - MALHEUR	ANN NIESEN CRAIG TRULOCK	PLANNING OPS	KURT RANTA CODY ACORD (T)
USFS - MALHEUR	SALLY CHRISTENSEN (T)	STRATGIC OPS	TONY ENGEL
USFS - UMATILLA	STEPHANEY KERLEY	STAGING AREA	
LEAD READ	MATT SMITH (T)	DIVISION/GROUP	A BOB HINDS IAN MCCORD (T)
INTERAGENCY RESOURCE REPRESENTATIVE	PAUL GIBBS 951-903-4135	DIVISION/GROUP	E RICK WOODALL ANDREW STINCHFIELD (T)
5. Planning Section:		DIVISION/GROUP	M BRAD BRYANT
CHIEF	MARGE HUTCHINSON	DIVISION/GROUP	S FIDEL VERDUZCO
DEPUTY	ERIC BLACK HOWARD JOHNSON (VIRTUAL)	DIVISION/GROUP	Z LARRY LEACH
RESOURCES UNIT	JILL JOHNSON	DIVISION/GROUP	CONTING/STRU CT/IA JIM WALKOWSKI
SITUATION UNIT			
DOCUMENTATION UNIT	DEIDRE SMITH (VIRTUAL)		
DEMOBILIZATION UNIT	MIKE HESTON (VIRTUAL)	7b. Air Operations Branch:	
FIRE BEHAVIOR ANALYST	DON STRAND	AIR OPS BRANCH DIRECTOR	PAUL BALFOUR
TRAINING SPECIALIST		AIR SUPPORT SUPERVISOR	TIM LYDA
GIS SPECIALIST	SHAWN BUSHNELL ; DEVIN SCHEID(T) MIKE TONKEL (T) (VIRTUAL)		
TECHNOLOGY SUPPORT SPECIALIST	GEORGE JENKINS BRADLEY DILG	8. Finance/Administration Section:	
INCIDENT METEOROLOGIST	DEREK WILLIAMS	CHIEF	CHERI FULLER
6. Logistics Section:		DEPUTY	CHRISTINA GOEBEL
CHIEF	KEVIN HAUGHTON (TAYLOR FLATS) PAUL FOOTEN (ICP) (T)	TIME UNIT	STEVE CROW
FACILITIES UNIT	LEE VENNING (TAYLOR FLATS) RICHARD CROWTHER (ICP)	PROCUREMENT UNIT	MARK BOHNET
BASE CAMP MANAGER	TULLY PRITCHETT(ICP)	INCIDENT CONTRACT PROJ INSP	ROB HECHINGER
		COST UNIT	KAY HIGH (VIRTUAL)
9. Prepared By:	Name: JILL JOHNSON	Position/Title: RESL	Signature: 
ICS 203	IAP Page	Date/Time: 09/01/2022 2000	



Fire Weather Forecast

FORECAST NO: 6
PREDICTION FOR: Friday-Saturday
DATE: September 2nd - 3rd 2022
FORECAST ISSUED: 2000 September 1st, 2022

Fire: Crockets Knob
UNIT: OR-MAF-022199
Incident Meteorologist: Derek Williams
Signed:

WEATHER DISCUSSION:

*****RED FLAG WARNING in effect from 11AM today through 5AM Saturday morning*****

Critical fire weather conditions are expected to develop this afternoon and last through much of the night. Near record setting heat combined with very low RH in an unstable atmosphere will lead to critical fire weather conditions, conducive to plume dominated fires. Winds will increase from the southeast this afternoon as an upper-level trough approaches the area, increasing further late afternoon through the evening hours before a cool front moves through from the west around midnight, reducing wind speeds and raising humidity. Thicker smoke from fires to the northeast across Wallowa NF could filter into the area this morning reducing overall visibility.

TODAY:

WEATHER: Hazy. Hot, very dry and unstable. Sunny.
MAX TEMP: Valleys: 95-99° (6-8° warmer) **MIN RH:** Valleys: 6-9% (little change)
 Ridgetops: 84-88° (6-8° warmer) **Ridgetops:** 9-12% (little change)
CHC WTG RAIN: 0% **LAL:** 1 **HAINES:** 6 (High)

WINDS: Valleys: Downslope winds 2-4 mph in the morning. Upslope winds 5-8 mph developing after 1030.
(20 feet) Ridgetops: East-southeast 5-8 mph in the morning transitioning to the southeast and increasing to 10-15 mph with gusts to 20-25 mph in the afternoon.

MIXING HEIGHT: Rising to 11,500 feet by 1600.

TRANSPORT WIND: South 15-20 mph.

VISIBILITY: 5 to 8 miles. **INVERSION:** Inversion lifting around 1130.

TONIGHT:

WEATHER: Increasing cloud cover.
MIN TEMP: Valleys: 49-54° (1-2° warmer) **MAX RH:** Valleys: 40-50% (10-15% higher)
 Ridgetops: 53-57° (2-3° warmer) **Ridgetops:** 35-45% (15-20% higher)
CHC WTG RAIN: 0% **LAL:** 1 **HAINES:** 6 (High) before midnight.

WINDS: Valleys: Downslope and down valley winds of 2-4 mph developing through the night.
(20 FEET) Ridgetops: Southeast 15-20 mph with gusts to 25-30 mph diminishing around midnight.

TRANSPORT WIND: South 15-20 mph decreasing after midnight.

SATURDAY:

WEATHER: Mostly cloudy with a slight chance of showers and thunderstorms in the morning becoming partly cloudy after noon.
MAX TEMP: Valleys: 87-91° (7-9° cooler) **MIN RH:** Valleys: 15-19% (6-9% higher)
 Ridgetops: 75-80° (7-9° cooler) **Ridgetops:** 18-22% (8-9% higher)
CHC WTG RAIN: 0% **LAL:** 2 **HAINES:** 4 (Low)

WINDS: Valleys: Downslope winds 2-4 mph in the morning. Upslope winds 5-8 mph developing after 1100.
(20 feet) Ridgetops: West 5-10 mph becoming northwest late afternoon and with gusts to 15 mph.

MIXING HEIGHT: Rising to 7,500 feet by 1600.

TRANSPORT WIND: West around 10 mph.

VISIBILITY: 7 to 9 miles **INVERSION:** Inversion lifting around 1200.

EXTENDED OUTLOOK: Sunday through Wednesday: An upper-level disturbance will move through the Pacific Northwest on Sunday bringing a weak cool front and increased winds to the area. Relatively quiet but still warm and dry weather will continue for Monday and Tuesday with a stronger Pacific trough moving into the region Wednesday, potentially bringing a larger scale cooler pattern to the area but with limited precipitation.



Nearby Weather Observations →

FIRE BEHAVIOR FORECAST

FORECAST NUMBER: 6	TYPE OF FIRE: WILDFIRE
FIRE NAME: Crockets Knob	OPERATIONAL PERIOD: Day Shift Sept 2, 2022
DATE ISSUED: Sept 1, 2022	TIME ISSUED: 2000 HOURS
UNIT: OR-MAF	Don Strand NW IMT12 FBAN

INPUTS

WEATHER SUMMARY: See attached weather forecast. RED FLAG WARNING for low RH and unstable atmosphere. Max temps – near 95 min RH near 7 %. Winds – upslope 5-8 MPH with afternoon ridge top winds Southeast 10-15 MPH with gusts 20 to 25 MPH..... Haines Index 6 (high).

FUELS: Consists of brush, dense regeneration with a surface litter of large down wood. The fire area also contains snags and areas with remnant live trees which survived the 1996 fire.

Live fuel moistures in the Ceanothus are estimated to be near 100%. 1000-hour dead fuel moistures are in the 10% range. 10-hr and 100-hr fuel moistures are in the critically dry range.

Energy Release Component is near the 97th percentile.

OUTPUTS

FIRE BEHAVIOR

GENERAL: HEADS UP FIRE DAY

- RED FLAG WARNING for low RH and unstable atmosphere, Afternoon winds SE 10 to 15 MPH with gust to 25 MPH.
- Expect fire spread in down woody surface fuels with single and group torching, spotting down wind and leap frogging to new fuels. Sub alpine trees are present in the upper elevations and easily torch, producing numerous fire brands.
- Where fire gets in alignment with winds and or slope, short upslope runs in the brush, reproduction and timber stringers are possible. Potential for flare ups exists in areas of dirty burns.

POI: 90%. Maximum spotting distance near 0.75 miles.

Head fire rates of spread in the surface fuels will be 10 to 20 feet/minute. On steeper slopes, 30 to 40 ft/minute.

SPECIFIC:

DIV A: Winds will align with Myrtle Creek. Expect occasional torching east of creek with potential to spot across drainage. With stronger afternoon winds, upslope runs possible.

DIV E: Interior to area that was burned out, expect fire spread in the heavy surface fuels, leap frogging to available fuels. With the SE winds, potential exists for spotting across 537 and 45 roads.

DIV M: SE and upslope winds have the potential to push fire through the brush and timbered islands, spotting across the sparse grass openings.

DIV Z: Expect flanking fire with occasional torching in timbered islands. Upslope winds may be enhanced by the SE winds in the Boulder Creek Basin. So, a threat of fire moving through timbered islands exists.

INITIAL ATTACK: In the event resources respond to a new start, the low fuel moisture along with the unstable atmosphere will contribute to greater fire intensity. Pay attention to wind/slope alignment. Potential for rapid rates of spread in light flashy fuels exist.

AIR OPERATIONS: Expect areas of smoke haze/drift in the area from the larger fires to our NE.

SAFETY

RED FLAG WARNING for low RH and unstable atmosphere.

Daily low RH along with several past night of poor nighttime recoveries has fuel moistures at critical levels

As fire moves into new areas, pay attention to snags and fire weakened trees.

Spot fires can develop quickly and be difficult to suppress.

Safety Message

2 September 2022

INCIDENT: CROCKETS KNOB

OPERATIONAL PERIOD: 0600-1800

TOPICS: SHORT HAUL/MEDICAL EMERGENCIES

Extraction: SHORT HAUL

Teton Short Haul is now available to the incident. It is positioned in Baker with an approximate flight time of 20 minutes. This resource is but one in your/our toolbox to provide timely extraction. Remember your number one objective is to provide treatment to a patient and get them to definitive care in an hour.

Evaluate patient condition and formulate the best plan to get them to definitive care in under an hour using all the tools in the toolbox. Aviation resources are a tool, but never the center of a plan.



Medical Emergencies-Do you know what to do in a medical emergency? Review the Medical Plan (ICS 206) and become familiar with the “Medical Incident Report”. Identify an Incident Commander and use items one through eight to communicate situation to **Crockets Knob Communications**. Anyone on this fire could be the first person to arrive on an incident, and your actions may be what saves a life.

Don't stand to close to guys that are always bandaged up.

SAFETY OFFICER: Troy Corn, Jack Cates

Deliberate Risk Assessment-Hazard Summary

2 September 2022

Hazard	Mitigation	Post Risk
Extraction Time	Utilize shorthaul, agency and civilian medivac as treatment/timing dictates. Review ordering procedure for all aircraft. Establish redundant plans for evac if using aircraft. Identify medivac sites and helispots. Initiate ground transport to accident site for transport capability. Identify EMT/EMTP from resources assigned to division. Provide line qualified paramedics to each division as available. Review IWI protocol to ensure familiarity. Evaluate on-going need for repositioning medical personnel. Provide dust abatement on Helispots as needed.	HIGH
Aircraft	Utilize Air Attack. Ensure all resources are a safe distance from all bucket and retardant drops. Establish LCES. Utilize air to ground primary for fixed wing, air to ground 2 for bucket work as needed. Reference IRPG (Safe aircraft operations pg. 61-62). Ensure IA resources have coordination with unassigned local air resources to provide deconfliction.	HIGH
Hazard Trees	Use avoidance to limit exposure time. Fall ahead to avoid exposure. Use qualified fallers, blasting, or alternate methods if needed. Conduct on- going risk analysis of all work areas. Follow Hazard Tree Safety Guidelines (IRPG page 20-21).	HIGH
Heavy Equipment	Post lookouts around equipment work areas. Establish communications with equipment boss and operator. Do not work down slope from equipment. Follow agency guidelines for chipping operations.	HIGH
Physical Factors	Maintain hydration schedule. Closely monitor work rate and implement rest periods. Maintain nutrition. Ensure adequate work/rest.	MODERATE
Fire Behavior	Be aware of burn windows and weather impacts and min/max RH for flashy fuels/local conditions. Report changes to FBAN and IMET. Establish MAP for disengagement to provide for an orderly retreat given lack of safety zones. Have a plan for disengagement that establishes a designated meeting point and maintains personnel accountability.	MODERATE
Steep Terrain/Gravity	Do not work crews above or below each other. Post lookouts for rolling material. Watch footing in loose soil, rock and around vegetation. Do not work below heavy equipment. Scout and identify travel routes.	MODERATE
Unburned Fuels/Firing Ops	Establish LCES. Ensure management action points are implemented and followed. Weather updates as needed during burning operations. Locate indirect firelines to minimize unburned fuels. Follow Interagency Ignition Guide. Ensure communications between all firing operations. Establish road security at all firing sites. Follow approved firing plan for unburned fuels. If utilizing aerial ignitions, make sure firing plan is in place and communicated to all resources and understood. Utilize separate Air to Ground for operation as appropriate.	MODERATE

Deliberate Risk Assessment-Hazard Summary

2 September 2022

Transportation	Sign all incident roads that provide access to divisions. Provide daily updated travel plan maps. Practice defensive driving. In local communities obey the posted speed limits in town and recognize the school zone around camp and the presence of children along streets and roadways. Use reader boards to provide advanced warning and control entry to base camp as needed. Identify and evaluate contingency and alternate escape and travel routes. Provide dust abatement and grading as needed. Provide advanced scouting for transport access and bridge weight restrictions. Evaluate road conditions for access, egress, and travel routes to the North of the fire for drivability and safety.	MODERATE
Initial Attack	Ensure identified IA resources are briefed of expectations and ensure communication plan is provided. Ensure resources are briefed on IA command structure. Provide identified crews with area maps.	MODERATE
ATV/UTV	Follow agency specific rules and regulations for proper PPE. Make sure operators are properly licensed and trained. Operate machine to the current and expected conditions. Do not overload machine.	MODERATE
Environmental Factors	Assign medical personnel to camp. Assess for known allergies and report to medical personnel. Obtain Bee Bopper/wasp spray and yellow jacket traps. Maintain an awareness of livestock, wildlife and rattlesnakes. Identify and report allergies to your chain of command. Work with READs and GISS to evaluate and identify mineshafts.	MODERATE
Communication	Evaluate for dead zones prior to engagement. Utilize human repeaters as needed. Ensure accountability of resources in problem areas. Spiking resources must be in cell coverage. 24 staffing at JDICC will serve as a backup. Spike locations relayed to Ops daily.	LOW
Public Interaction	Implement area and road closures as necessary. Keep a lookout for hunters in and out of closure areas. Maintain awareness of evacuation areas and provide accurate information dissemination.	LOW
Viral Transmission Mitigations, Communicable Disease	Maintain awareness of health, perform self-checks, maintain social distancing, wear face coverings in accordance with CDC recommendations. Report and isolate if not feeling well. Establish liaison with Grant County Public Health.	LOW

Division/Group Assignment List (ICS 204 WF)
Controlled Unclassified Information//Basic

1. Incident Name:			3.			
CROCKETS KNOB			Branch:		Division/Group	
2. Operational Period: DAY			A			
Date/Time From: 09/02/2022 0600 FRI		Date/Time To: 09/02/2022 1800 FRI				
4. Operations Personnel						
OPERATIONS CHIEF		AARON ROWE; JEROMY WILSON (T) KURT RANTA; CODY ACORD (T)		DIVISION/GROUP SUPERVISOR		BOB HINDS IAN MCCORD (T)
SAFETY OFFICER		TROY CORN; JACK CATES ERIC MILLER (T)		AIR OPERATIONS BRANCH DIRECTOR		PAUL BALFOUR
5. Resources Assigned this Period						
Strike Team / Task Force / Resource Designator		LWD	Leader	Number Persons	Drop Off PT./Time	Pick Up PT./Time
O-99 SOFR		09/12	JEROME DRAZINSKI	1	BASE CAMP/0600	BASE CAMP/1800
O-21 TFLD		09/05	MICHAEL CEARNS	1	BASE CAMP/0600	BASE CAMP/1800
O-83 TFLD		09/10	ERIC METZGER	1	BASE CAMP/0600	BASE CAMP/1800
O-1 FMOD		09/05	JERRY PETTYJOHN	2	BASE CAMP/0600	BASE CAMP/1800
C-15 CRW1 PRESCOTT IHC		09/12	DARIN FISHER	23	BASE CAMP/0600	BASE CAMP/1800
C-5 CR2I GRAYBACK FORESTRY NCC 13B		08/30	DAVID BLANCO	20	BASE CAMP/0600	BASE CAMP/1800
C-17 CR2I SRV #10		09/07	MAGDALENO GUARDADO	22	BASE CAMP/0600	BASE CAMP/1800
E-4 ENG6 GRAYBACK FORESTRY		09/04	ERNIE SMITH	3	BASE CAMP/0600	BASE CAMP/1800
E-18 ENG4 AAA THUNDERBOLT		09/05	LOGAN CATES	3	BASE CAMP/0600	BASE CAMP/1800
E-35 ENG6 STRIKE BACK LLC		09/08	JOE PICKET	2	BASE CAMP/0600	BASE CAMP/1800
E-37 ENG4 AAA THUNDERBOLT FIRE SVC		09/08	ROBERT STEWART	3	BASE CAMP/0600	BASE CAMP/1800
E-39 ENG BIGFOOT		09/09	TRAVIS ALBRECHT	3	BASE CAMP/0600	BASE CAMP/1800
E-60 WTS2 ALL WET TRUCKING		09/10	ALEX WRIGHT	1	BASE CAMP/0600	BASE CAMP/1800
E-61 WTS2 ALL WET TRUCKING		09/10	WILLIAM HOOVER	1	BASE CAMP/0600	BASE CAMP/1800
E-93 WTS2 STORM CARPENTER		09/12	STACY COATES	1	BASE CAMP/0600	BASE CAMP/1800
8. Division/Group Communication Summary						
Function	Channel	RX Frequency N/W	RX Tone/NAC	TX Frequency N/W	TX Tone/NAC	Mode
COMMAND	1	170.4250	131.8	168.0750	131.8	A
COMMAND	2	170.4125	131.8	165.9625	131.8	A
TACTICAL	4	168.0500	131.8	168.0500	131.8	A
AIR TO GROUND	13	167.0750		167.0750		A
9. Prepared By (Resource Unit Leader)			Approved By (Planning Section Chief)		Date	Time
JILL JOHNSON			MARGE HUTCHINSON		09/01/2022	2000

Division/Group Assignment List (ICS 204 WF)
Controlled Unclassified Information//Basic

1. Incident Name:			3.			
CROCKETS KNOB			Branch:		Division/Group	
2. Operational Period: DAY			A			
Date/Time From: 09/02/2022 0600 FRI		Date/Time To: 09/02/2022 1800 FRI				
4. Operations Personnel						
OPERATIONS CHIEF		AARON ROWE; JEROMY WILSON (T) KURT RANTA; CODY ACORD (T)		DIVISION/GROUP SUPERVISOR		BOB HINDS IAN MCCORD (T)
SAFETY OFFICER		TROY CORN; JACK CATES ERIC MILLER (T)		AIR OPERATIONS BRANCH DIRECTOR		PAUL BALFOUR
5. Resources Assigned this Period						
Strike Team / Task Force / Resource Designator		LWD	Leader	Number Persons	Drop Off PT./Time	Pick Up PT./Time
E-12 UTV KD OUTDOORS			UNSTAFFED		BASE CAMP/0600	BASE CAMP/1800
O-34 REAF		09/06	EMILY MODELSKI	1	BASE CAMP/0600	BASE CAMP/1800
O-122 REAF		09/13	SUSAN THEIS	1	BASE CAMP/0600	BASE CAMP/1800
E-27 AMB1 CASCADE MED TRANSPORT		09/06	BRADEY HOLT	2	BASE CAMP/0600	BASE CAMP/1800
O-93 EMPF MEDIC 2 FRONTLINE EMS		09/10	ASHLEY CARTER	1	BASE CAMP/0600	BASE CAMP/1800
O-96 EMPF MEDIC 4 FIRELINE MEDICS		09/11	MATT FREEBORN	1	BASE CAMP/0600	BASE CAMP/1800
6. Control Operations/Work Assignments:						
<p>TASK: Hold fire east of the dozer line in Myrtle Creek, burning out pockets as needed. Prepare to fire the 45 Road. Continue mop-up and patrol Road 4550.</p> <p>PURPOSE: Prevent fire growth that impacts private property, cultural and natural resources, and remaining timber stands within Summit Fire scar.</p> <p>END STATE: Fire is contained east of Road 45 and north of Road 4550.</p>						
7. Special Instructions:						
Engines and tenders may NOT draft directly from natural water sources, such as creeks. Drafting will occur only from Fold-a-tanks.						
8. Division/Group Communication Summary						
Function	Channel	RX Frequency N/W	RX Tone/NAC	TX Frequency N/W	TX Tone/NAC	Mode
COMMAND	1	170.4250	131.8	168.0750	131.8	A
COMMAND	2	170.4125	131.8	165.9625	131.8	A
TACTICAL	4	168.0500	131.8	168.0500	131.8	A
AIR TO GROUND	13	167.0750		167.0750		A
9. Prepared By (Resource Unit Leader)			Approved By (Planning Section Chief)		Date	Time
JILL JOHNSON			MARGE HUTCHINSON		09/01/2022	2000

Division/Group Assignment List (ICS 204 WF)
Controlled Unclassified Information//Basic

1. Incident Name:			3.			
CROCKETS KNOB			Branch:		Division/Group	
2. Operational Period: DAY			E			
Date/Time From: 09/02/2022 0600 FRI		Date/Time To: 09/02/2022 1800 FRI				
4. Operations Personnel						
OPERATIONS CHIEF		AARON ROWE; JEROMY WILSON (T) KURT RANTA; CODY ACORD (T)		DIVISION/GROUP SUPERVISOR		RICK WOODALL ANDREW STINCHFIELD (T)
SAFETY OFFICER		TROY CORN; JACK CATES ERIC MILLER (T)		AIR OPERATIONS BRANCH DIRECTOR		PAUL BALFOUR
5. Resources Assigned this Period						
Strike Team / Task Force / Resource Designator		LWD	Leader	Number Persons	Drop Off PT./Time	Pick Up PT./Time
O-61.80 SOF2		09/10	PAUL BRNA	1	BASE CAMP/0600	BASE CAMP/1800
O-59 TFLD		09/10	JON STONELAKE	1	BASE CAMP/0600	BASE CAMP/1800
O-84 TFLD		09/11	SCOTT BENINATI	1	BASE CAMP/0600	BASE CAMP/1800
O-86 TFLD		09/12	NIC TURCO	1	BASE CAMP/0600	BASE CAMP/1800
O-14 HEQB		09/05	NICK SCHULZ	1	BASE CAMP/0600	BASE CAMP/1800
O-16 HEQB (T)		09/06	THOMAS FISHER	1	BASE CAMP/0600	BASE CAMP/1800
O-54 HEQB		09/12	JAMES MAYOR	1	BASE CAMP/0600	BASE CAMP/1800
O-80 HEQB		09/09	WHITNEY VANDEWIELE	1	BASE CAMP/0600	BASE CAMP/1800
O-3 FMOD WEBB		09/05	MARK WEBB	2	BASE CAMP/0600	BASE CAMP/1800
C-1 CR2I BIG STATE WILDFIRE 14D		09/05	CHRISTIAN BLANKENSHIP	19	BASE CAMP/0600	BASE CAMP/1800
C-9 CRW2 IRON MOUNTAIN FF		09/10	VICTOR CISNEROS	20	BASE CAMP/0600	BASE CAMP/1800
C-10 CRW2 CSR ENTERPR CRS3		09/10	JUBENCIO SALDANG	20	BASE CAMP/0600	BASE CAMP/1800
C-16 CRW1 CRW1 - PIKE IHC			DAVID SMALLMAN	20	BASE CAMP/0600	BASE CAMP/1800
C-18 CR2I VALE BLM SRV #12		09/07	JAY JACOBO	20	BASE CAMP/0600	BASE CAMP/1800
C-25 CRW2 SZ FORESTRY FULLERTON CREW 1		09/15	RICHARD FULLERTON	20	BASE CAMP/0600	BASE CAMP/1800
E-3 ENG6 GRAYBACK FORESTRY		09/04	CHRIS KENNEDY	3	BASE CAMP/0600	BASE CAMP/1800
8. Division/Group Communication Summary						
Function	Channel	RX Frequency N/W	RX Tone/NAC	TX Frequency N/W	TX Tone/NAC	Mode
COMMAND	1	170.4250	131.8	168.0750	131.8	A
COMMAND	2	170.4125	131.8	165.9625	131.8	A
TACTICAL	5	168.2000	131.8	168.2000	131.8	A
AIR TO GROUND	13	167.0750		167.0750		A
9. Prepared By (Resource Unit Leader)			Approved By (Planning Section Chief)		Date	Time
JILL JOHNSON			MARGE HUTCHINSON		09/01/2022	2000

Division/Group Assignment List (ICS 204 WF)
Controlled Unclassified Information//Basic

1. Incident Name:				3.		
CROCKETS KNOB				Branch:	Division/Group E	
2. Operational Period: DAY						
Date/Time From: 09/02/2022 0600 FRI		Date/Time To: 09/02/2022 1800 FRI				
4. Operations Personnel						
OPERATIONS CHIEF		AARON ROWE; JEROMY WILSON (T) KURT RANTA; CODY ACORD (T)		DIVISION/GROUP SUPERVISOR		RICK WOODALL ANDREW STINCHFIELD (T)
SAFETY OFFICER		TROY CORN; JACK CATES ERIC MILLER (T)		AIR OPERATIONS BRANCH DIRECTOR		PAUL BALFOUR
5. Resources Assigned this Period						
Strike Team / Task Force / Resource Designator		LWD	Leader	Number Persons	Drop Off PT./Time	Pick Up PT./Time
E-77 ENG6 OREGON WOODS		09/11	RAVEN PARKINS	3	BASE CAMP/0600	BASE CAMP/1800
E-79 ENG6 HI COUNTRY LLC E1021		09/11	JOHN CONGER	3	BASE CAMP/0600	BASE CAMP/1800
E-80 ENG6 A1 FIRESTORM E5		09/11	DONALD LAFFERTY	3	BASE CAMP/0600	BASE CAMP/1800
E-81 ENG6 TIMBER BASIN CONTR		09/11	SCOTT FARMER	3	BASE CAMP/0600	BASE CAMP/1800
E-5 WTS2 45 CONTRACTING LLC		09/04	MIKE NAULT	1	BASE CAMP/0600	BASE CAMP/1800
E-113 WTS2 KING INC		09/15	DAVID SHEFFEL	1	BASE CAMP/0600	BASE CAMP/1800
E-114 WTS2 SAULS MOBILE WASH		09/13	WAYNE SAUL	1	BASE CAMP/0600	BASE CAMP/1800
E-17 DZR2 J & D LOGGING & CONTR		09/05	JOHN SANOWSKI	2	BASE CAMP/0600	BASE CAMP/1800
E-98 DZR2 CARTER		09/13	PATTON CARTER	2	BASE CAMP/0600	BASE CAMP/1800
E-29 MBM2 MORRIS FORESTRY		09/06	DOU GHARITY	2	BASE CAMP/0600	BASE CAMP/1800
E-33 MBM1 BRUCE YOUNG LOGGING		09/09	MATT MCLAREN	2	BASE CAMP/0600	BASE CAMP/1800
E-115 MBM1 BOULDER RIDGE CONSTR		09/14	GARRY ALLEN	2	BASE CAMP/0600	BASE CAMP/1800
E-99 MAST JLC CONTRACTING		09/13	BRIAN STAHANCYK	2	BASE CAMP/0600	BASE CAMP/1800
E-62 FEL1 J & D LOGGING & CONTR		09/10	LJ SADOWSKI	2	BASE CAMP/0600	BASE CAMP/1800
E-10 CHP2 ROGUE RIVE FIRE & WATER		09/08	AUSTIN HUTTEMA	3	BASE CAMP/0600	BASE CAMP/1800
E-11 UTV KD OUTDOORS			UNSTAFFED		BASE CAMP/0600	BASE CAMP/1800
8. Division/Group Communication Summary						
Function	Channel	RX Frequency N/W	RX Tone/NAC	TX Frequency N/W	TX Tone/NAC	Mode
COMMAND	1	170.4250	131.8	168.0750	131.8	A
COMMAND	2	170.4125	131.8	165.9625	131.8	A
TACTICAL	5	168.2000	131.8	168.2000	131.8	A
AIR TO GROUND	13	167.0750		167.0750		A
9. Prepared By (Resource Unit Leader)			Approved By (Planning Section Chief)		Date	Time
JILL JOHNSON			MARGE HUTCHINSON		09/01/2022	2000

Division/Group Assignment List (ICS 204 WF)

Controlled Unclassified Information//Basic

1. Incident Name:			3.			
CROCKETS KNOB			Branch:		Division/Group E	
2. Operational Period: DAY						
Date/Time From: 09/02/2022 0600 FRI		Date/Time To: 09/02/2022 1800 FRI				
4. Operations Personnel						
OPERATIONS CHIEF		AARON ROWE; JEROMY WILSON (T) KURT RANTA; CODY ACORD (T)		DIVISION/GROUP SUPERVISOR		RICK WOODALL ANDREW STINCHFIELD (T)
SAFETY OFFICER		TROY CORN; JACK CATES ERIC MILLER (T)		AIR OPERATIONS BRANCH DIRECTOR		PAUL BALFOUR
5. Resources Assigned this Period						
Strike Team / Task Force / Resource Designator		LWD	Leader	Number Persons	Drop Off PT./Time	Pick Up PT./Time
E-109 UTV E OREGON RENTALS			UNSTAFFED		BASE CAMP/0600	BASE CAMP/1800
O-7 EMT		09/06	DANIEL SOLOMON	1	BASE CAMP/0600	BASE CAMP/1800
O-94 EMPF MEDIC 1 ADVENTURE MEDICS		09/10	CHRISTIAN MILLER	1	BASE CAMP/0600	BASE CAMP/1800
E-87 REMS BLACKWOODS EMERG SVC		09/12	NICK BRUCKNER	4	BASE CAMP/0600	BASE CAMP/1800
6. Control Operations/Work Assignments:						
<p>TASK: Continue firing south along 45 Road from H-51. Secure and mop-up spots above 537 Road and along the 537 and 45 roads where firing has occurred.</p> <p>PURPOSE: Prevent fire growth that impacts cultural and natural resources, remaining timber stands within the Summit Fire scar, and the Indian Rock Lookout.</p> <p>END STATE: Fire is contained east of Road 45.</p>						
7. Special Instructions:						
Engines and tenders may NOT draft directly from natural water sources, such as creeks. Drafting will occur only from Fold-a-tanks.						
8. Division/Group Communication Summary						
Function	Channel	RX Frequency N/W	RX Tone/NAC	TX Frequency N/W	TX Tone/NAC	Mode
COMMAND	1	170.4250	131.8	168.0750	131.8	A
COMMAND	2	170.4125	131.8	165.9625	131.8	A
TACTICAL	5	168.2000	131.8	168.2000	131.8	A
AIR TO GROUND	13	167.0750		167.0750		A
9. Prepared By (Resource Unit Leader)			Approved By (Planning Section Chief)		Date	Time
JILL JOHNSON			MARGE HUTCHINSON		09/01/2022	2000

Division/Group Assignment List (ICS 204 WF)
Controlled Unclassified Information//Basic

1. Incident Name:			3.			
CROCKETS KNOB			Branch:		Division/Group	
2. Operational Period: DAY			M			
Date/Time From: 09/02/2022 0600 FRI		Date/Time To: 09/02/2022 1800 FRI				
4. Operations Personnel						
OPERATIONS CHIEF		AARON ROWE; JEROMY WILSON (T) KURT RANTA; CODY ACORD (T)		DIVISION/GROUP SUPERVISOR		BRAD BRYANT
SAFETY OFFICER		TROY CORN; JACK CATES ERIC MILLER (T)		AIR OPERATIONS BRANCH DIRECTOR		PAUL BALFOUR
5. Resources Assigned this Period						
Strike Team / Task Force / Resource Designator		LWD	Leader	Number Persons	Drop Off PT./Time	Pick Up PT./Time
O-61.83 SOF2		09/13	TAIJA CORSO	1	BASE CAMP/0600	BASE CAMP/1800
C-4 CR2I GRAYBACK FORESTRY 13A		09/15	CHARLES COFMAN	20	BASE CAMP/0600	BASE CAMP/1800
E-14 UTV			UNSTAFFED		BASE CAMP/0600	BASE CAMP/1800
6. Control Operations/Work Assignments:						
<p>TASK: Monitor fire growth beneath Indian Rock and Princess Trail to the junction of the Big Boulder trail. Evaluate needs for potential firing operations below Greenhorn Ridge. Wrap Indian Rock Lookout.</p> <p>PURPOSE: Provide time to ensure appropriate action can be taken to prevent impacts to cultural and natural resources, remaining timber stands within the Summit Fire scar, and the Indian Rock Lookout.</p> <p>END STATE: Fire is contained southwest of main ridge using natural barriers and Princess Trail.</p>						
7. Special Instructions:						
Notify Operations of fire growth across the Princess Trail.						
8. Division/Group Communication Summary						
Function	Channel	RX Frequency N/W	RX Tone/NAC	TX Frequency N/W	TX Tone/NAC	Mode
COMMAND	1	170.4250	131.8	168.0750	131.8	A
COMMAND	2	170.4125	131.8	165.9625	131.8	A
TACTICAL	6	168.6000	131.8	168.6000	131.8	A
AIR TO GROUND	13	167.0750		167.0750		A
9. Prepared By (Resource Unit Leader)			Approved By (Planning Section Chief)		Date	Time
JILL JOHNSON			MARGE HUTCHINSON		09/01/2022	2000

Division/Group Assignment List (ICS 204 WF)
Controlled Unclassified Information//Basic

1. Incident Name:				3.		
CROCKETS KNOB				Branch:	Division/Group S	
2. Operational Period: DAY						
Date/Time From: 09/02/2022 0600 FRI		Date/Time To: 09/02/2022 1800 FRI				
4. Operations Personnel						
OPERATIONS CHIEF		AARON ROWE; JEROMY WILSON (T) KURT RANTA; CODY ACORD (T)		DIVISION/GROUP SUPERVISOR		FIDEL VERDUZCO
SAFETY OFFICER		TROY CORN; JACK CATES ERIC MILLER (T)		AIR OPERATIONS BRANCH DIRECTOR		PAUL BALFOUR
5. Resources Assigned this Period						
Strike Team / Task Force / Resource Designator		LWD	Leader	Number Persons	Drop Off PT./Time	Pick Up PT./Time
O-61.82 SOF2		09/10	DON WALLER	1	BASE CAMP/0600	BASE CAMP/1800
O-55 TFLD		09/11	EZRA HERFIELD	1	BASE CAMP/0600	BASE CAMP/1800
O-130 TFLD (T)		09/11	TIMOTHY WAGNER	1	BASE CAMP/0600	BASE CAMP/1800
O-15 HEQB **		09/05	AARON KIENZLE	1	BASE CAMP/0600	BASE CAMP/1800
O-20 HEQB (T) **		09/06	DUANE STOKES	1	BASE CAMP/0600	BASE CAMP/1800
O-128 FMOD SWEDBERG CONTR		09/12	CRAIG GREEN	2	BASE CAMP/0600	BASE CAMP/1800
C-19 CRW2 WILLAMETTE VLY REFOREST CR 3		09/12	LAZARO MONTANO	20	BASE CAMP/0600	BASE CAMP/1800
C-20 CRW2 TORRES CONTR CR6		09/11	MARCA MARTINEZ	20	BASE CAMP/0600	BASE CAMP/1800
E-78 ENG6 AQUAFORCE E204		09/11	TYLER GILMORE	3	BASE CAMP/0600	BASE CAMP/1800
E-91 WTT2 TRI-CO **		09/13	CHET HETTINGAL	1	BASE CAMP/0600	BASE CAMP/1800
E-92 WTT2 JWS WILDFIRE		09/12	JOHN MCNEELY	1	BASE CAMP/0600	BASE CAMP/1800
E-94 WTT2 GRAYBACK FORESTRY		09/12	CLIFFORD	1	BASE CAMP/0600	BASE CAMP/1800
E-7 DZR2 COUGAR RIDGE CONSTR **		09/05	DAVE OAKS	2	BASE CAMP/0600	BASE CAMP/1800
E-34 MBM1 EAGLE CAP FORESTRY		09/10	BEN FISCHER	2	BASE CAMP/0600	BASE CAMP/1800
E-64 GRD1 J & D LOGGING & CONTR		09/11	DYLAN BRANDSMA	2	BASE CAMP/0600	BASE CAMP/1800
E-30 CHP2 GRAYBACK FORESTRY		09/08	JOSH MINER	3	BASE CAMP/0600	BASE CAMP/1800
8. Division/Group Communication Summary						
Function	Channel	RX Frequency N/W	RX Tone/NAC	TX Frequency N/W	TX Tone/NAC	Mode
COMMAND	1	170.4250	131.8	168.0750	131.8	A
COMMAND	2	170.4125	131.8	165.9625	131.8	A
TACTICAL	7	166.7250	131.8	166.7250	131.8	A
AIR TO GROUND	13	167.0750		167.0750		A
9. Prepared By (Resource Unit Leader)			Approved By (Planning Section Chief)		Date	Time
JILL JOHNSON			MARGE HUTCHINSON		09/01/2022	2000

Division/Group Assignment List (ICS 204 WF)
Controlled Unclassified Information//Basic

1. Incident Name:			3.			
CROCKETS KNOB			Branch:		Division/Group	
2. Operational Period: DAY					S	
Date/Time From: 09/02/2022 0600 FRI		Date/Time To: 09/02/2022 1800 FRI				
4. Operations Personnel						
OPERATIONS CHIEF		AARON ROWE; JEROMY WILSON (T) KURT RANTA; CODY ACORD (T)		DIVISION/GROUP SUPERVISOR		FIDEL VERDUZCO
SAFETY OFFICER		TROY CORN; JACK CATES ERIC MILLER (T)		AIR OPERATIONS BRANCH DIRECTOR		PAUL BALFOUR
5. Resources Assigned this Period						
Strike Team / Task Force / Resource Designator		LWD	Leader	Number Persons	Drop Off PT./Time	Pick Up PT./Time
E-96 CHP1 THE ROAD HOME		09/12	SAM BONADOR	3	BASE CAMP/0600	BASE CAMP/1800
E-97 CHP1 WYEAST FORESTRY MGMT		09/12	ERIC NELSON	3	BASE CAMP/0600	BASE CAMP/1800
E-13 UTV KD OUTDOORS			UNSTAFFED		BASE CAMP/0600	BASE CAMP/1800
E-119 UTV E OREGON RENTALS			UNSTAFFED		BASE CAMP/0600	BASE CAMP/1800
O-95 EMPF MEDIC 3 ADVENTURE MEDICS		09/12	MICHAEL COOPER	1	BASE CAMP/0600	BASE CAMP/1800
6. Control Operations/Work Assignments:						
<p>TASK: Continue prepping the 4555 road and Sunrise Butte Trail to Princess Trail in the event firing operations will be needed. PURPOSE: Prevent Fire growth to the East/Southeast that impacts private property, cultural, natural, and timber values. END STATE: Fire is contained west of 4555 road and the Sunrise Butte trail.</p>						
7. Special Instructions:						
Engines and tenders may NOT draft directly from natural water sources, such as creeks. Drafting will occur only from fold-a-tanks.						
<ul style="list-style-type: none"> If Initial Attack occurs within the TFR, John Day Dispatch will coordinate with appropriate duty officer and contact Field Ops for response. Field Operations will contact IA Group Supervisor and or Air Operations to coordinate response to new start. Local forest Initial Attack frequencies will be used and provided in the IAP Communications Plan The same process will be used for fires outside of TFR if assistance from Crockets Knob fire resources is requested. 						
8. Division/Group Communication Summary						
Function	Channel	RX Frequency N/W	RX Tone/NAC	TX Frequency N/W	TX Tone/NAC	Mode
COMMAND	1	170.4250	131.8	168.0750	131.8	A
COMMAND	2	170.4125	131.8	165.9625	131.8	A
TACTICAL	7	166.7250	131.8	166.7250	131.8	A
AIR TO GROUND	13	167.0750		167.0750		A
9. Prepared By (Resource Unit Leader)			Approved By (Planning Section Chief)		Date	Time
JILL JOHNSON			MARGE HUTCHINSON		09/01/2022	2000

Division/Group Assignment List (ICS 204 WF)
Controlled Unclassified Information//Basic

1. Incident Name:			3.			
CROCKETS KNOB			Branch:		Division/Group	
2. Operational Period: DAY					Z	
Date/Time From: 09/02/2022 0600 FRI		Date/Time To: 09/02/2022 1800 FRI				
4. Operations Personnel						
OPERATIONS CHIEF		AARON ROWE; JEROMY WILSON (T) KURT RANTA; CODY ACORD (T)		DIVISION/GROUP SUPERVISOR		LARRY LEACH
SAFETY OFFICER		TROY CORN; JACK CATES ERIC MILLER (T)		AIR OPERATIONS BRANCH DIRECTOR		PAUL BALFOUR
5. Resources Assigned this Period						
Strike Team / Task Force / Resource Designator		LWD	Leader	Number Persons	Drop Off PT./Time	Pick Up PT./Time
O-98 SOFR		09/12	CHRIS O'BRIEN	1	BASE CAMP/0600	BASE CAMP/1800
O-11 TFLD		09/09	JOSHUA WINKLER	1	BASE CAMP/0600	BASE CAMP/1800
C-7 CRW1 EL CARISO IHC		09/08	CHARLES KOTT	22	BASE CAMP/0600	BASE CAMP/1800
C-8 CRW1 INYO IHC		09/08	JOEL SHILLING	21	BASE CAMP/0600	BASE CAMP/1800
C-6 CR2I OR-MAF #401 **		09/07	GARY WHATLEY	25	BASE CAMP/0600	BASE CAMP/1800
E-2 ENG4 GRAYBACK FORESTRY		09/04	JOHN RAY	3	BASE CAMP/0600	BASE CAMP/1800
E-36 ENG6 AAA THUNDERBOLT FIRE SVC		09/08	TOBY YAZZIE	3	BASE CAMP/0600	BASE CAMP/1800
E-38 ENG4 AAA THUNDERBOLT FIRE SVC		09/08	JOHN GRANT	3	BASE CAMP/0600	BASE CAMP/1800
E-6 WTS2 STORM CARPENTER		09/04	CUB CARPENTER	2	BASE CAMP/0600	BASE CAMP/1800
E-45 WTS2 OSBURN		09/13	ALAN EWING	1	BASE CAMP/0600	BASE CAMP/1800
E-46 WTS2 OVERPECK LOGGING		09/10	JOE MCCORMICK	1	BASE CAMP/0600	BASE CAMP/1800
E-66 WTS2 1-A CONTRUCTION		09/10	SHAWN STEWART	1	BASE CAMP/0600	BASE CAMP/1800
E-95 WTS2 VEGETATION SOLUTION		09/12	JOHN MCKENZIE	1		
O-33 REAF (T)		09/06	JENNY HENNING	1	BASE CAMP/0600	BASE CAMP/1800
O-9 REMS SPFN 9		09/06	MATTHEW TURNER	4	BASE CAMP/0600	BASE CAMP/1800
E-51 AMBU 2		09/12	JERRY SINICA	2	BASE CAMP/0600	BASE CAMP/1800
8. Division/Group Communication Summary						
Function	Channel	RX Frequency N/W	RX Tone/NAC	TX Frequency N/W	TX Tone/NAC	Mode
COMMAND	1	170.4250	131.8	168.0750	131.8	A
COMMAND	2	170.4125	131.8	165.9625	131.8	A
TACTICAL	8	166.7750	131.8	166.7750	131.8	A
AIR TO GROUND	13	167.0750		167.0750		A
9. Prepared By (Resource Unit Leader)			Approved By (Planning Section Chief)		Date	Time
JILL JOHNSON			MARGE HUTCHINSON		09/01/2022	2000

Division/Group Assignment List (ICS 204 WF)
Controlled Unclassified Information//Basic

1. Incident Name:			3.			
CROCKETS KNOB			Branch:		Division/Group	
2. Operational Period: DAY			Z			
Date/Time From: 09/02/2022 0600 FRI		Date/Time To: 09/02/2022 1800 FRI				
4. Operations Personnel						
OPERATIONS CHIEF		AARON ROWE; JEROMY WILSON (T) KURT RANTA; CODY ACORD (T)		DIVISION/GROUP SUPERVISOR		LARRY LEACH
SAFETY OFFICER		TROY CORN; JACK CATES ERIC MILLER (T)		AIR OPERATIONS BRANCH DIRECTOR		PAUL BALFOUR
5. Resources Assigned this Period						
Strike Team / Task Force / Resource Designator	LWD	Leader	Number Persons	Drop Off PT./Time	Pick Up PT./Time	
6. Control Operations/Work Assignments:						
<p>TASK: Secure and mop-up dozer line and 436 Road. Continue securing direct line north towards H-193. Secure additional growth from spots north of H-193.</p> <p>PURPOSE: Prevent additional fire spread into Badger Creek that may have future impact to private property, cultural, natural and timber values.</p> <p>END STATE: Fire is contained east of 4550 road and north of Badger Creek.</p>						
7. Special Instructions:						
Engines and tenders may NOT draft directly from natural water sources, such as creeks. Drafting will occur only from Fold-a-tanks.						
<ul style="list-style-type: none"> If Initial Attack occurs within the TFR, John Day Dispatch will coordinate with appropriate duty officer and contact Field Ops for response. Field Operations will contact IA Group Supervisor and or Air Operations to coordinate response to new start. Local forest Initial Attack frequencies will be used and provided in the IAP Communications Plan The same process will be used for fires outside of TFR if assistance from Crockets Knob fire resources is requested. 						
8. Division/Group Communication Summary						
Function	Channel	RX Frequency N/W	RX Tone/NAC	TX Frequency N/W	TX Tone/NAC	Mode
COMMAND	1	170.4250	131.8	168.0750	131.8	A
COMMAND	2	170.4125	131.8	165.9625	131.8	A
TACTICAL	8	166.7750	131.8	166.7750	131.8	A
AIR TO GROUND	13	167.0750		167.0750		A
9. Prepared By (Resource Unit Leader)			Approved By (Planning Section Chief)		Date	Time
JILL JOHNSON			MARGE HUTCHINSON		09/01/2022	2000

Division/Group Assignment List (ICS 204 WF)
Controlled Unclassified Information//Basic

1. Incident Name:			3.			
CROCKETS KNOB			Branch:		Division/Group	
2. Operational Period: DAY			CONTINGENCY / STRUCTURE / IA			
Date/Time From: 09/02/2022 0600 FRI		Date/Time To: 09/02/2022 1800 FRI				
4. Operations Personnel						
OPERATIONS CHIEF		AARON ROWE; JEROMY WILSON (T) KURT RANTA; CODY ACORD (T)		DIVISION/GROUP SUPERVISOR		JIM WALKOWSKI
SAFETY OFFICER		TROY CORN; JACK CATES ERIC MILLER (T)		AIR OPERATIONS BRANCH DIRECTOR		PAUL BALFOUR
5. Resources Assigned this Period						
Strike Team / Task Force / Resource Designator		LWD	Leader	Number Persons	Drop Off PT./Time	Pick Up PT./Time
ALASKA STRIKE TEAM					BASE CAMP /0600	BASE CAMP/1800
O-119 TFLD		09/08	BRITTANY STILLIE	1	BASE CAMP /0600	BASE CAMP/1800
E-86.1 TFLD (T)		09/08	ROBIN ACE	1	BASE CAMP /0600	BASE CAMP/1800
E-82 ENG6 AK-KKS K-62		09/08	DAN WHITE	3	BASE CAMP /0600	BASE CAMP/1800
E-83 ENG6 FAIRBANKS-65		09/08	MATT NUNNELLY	3	BASE CAMP /0600	BASE CAMP/1800
E-84 ENG6 FAIRBANKS-66		09/08	ROBERT WALLACE	3	BASE CAMP /0600	BASE CAMP/1800
E-85 ENG6 FAIRBANKS-67		09/08	LAURA LUND	3	BASE CAMP /0600	BASE CAMP/1800
E-86 ENG6 DOF M-68		09/08	JOE SHAW	3	BASE CAMP /0600	BASE CAMP/1800
E-112 ENG ODF E-9262		09/13	AARON KIDWELL	2	BASE CAMP /0600	BASE CAMP/1800
6. Control Operations/Work Assignments:						
<p>Contingency Group: TASK: Scout for contingency lines beyond current containment lines. PURPOSE: To establish secondary lines of defense that would prevent impact to values if current primary lines are compromised. END STATE: Contingency lines identified and established if needed outside of primary containment lines.</p>						
8. Division/Group Communication Summary						
Function	Channel	RX Frequency N/W	RX Tone/NAC	TX Frequency N/W	TX Tone/NAC	Mode
COMMAND	1	170.4250	131.8	168.0750	131.8	A
COMMAND	2	170.4125	131.8	165.9625	131.8	A
TACTICAL	9	168.2500	131.8	168.2500	131.8	A
TACTICAL	11	168.3125	131.8	168.3125	131.8	A
AIR TO GROUND	12	167.3750		167.3750		A
AIR TO GROUND	13	167.0750		167.0750		A
9. Prepared By (Resource Unit Leader)			Approved By (Planning Section Chief)		Date	Time
JILL JOHNSON			MARGE HUTCHINSON		09/01/2022	2000

Division/Group Assignment List (ICS 204 WF)
Controlled Unclassified Information//Basic

1. Incident Name:			3.			
CROCKETS KNOB			Branch:		Division/Group	
2. Operational Period: DAY			CONTINGENCY / STRUCTURE / IA			
Date/Time From: 09/02/2022 0600 FRI		Date/Time To: 09/02/2022 1800 FRI				
4. Operations Personnel						
OPERATIONS CHIEF		AARON ROWE; JEROMY WILSON (T) KURT RANTA; CODY ACORD (T)		DIVISION/GROUP SUPERVISOR		JIM WALKOWSKI
SAFETY OFFICER		TROY CORN; JACK CATES ERIC MILLER (T)		AIR OPERATIONS BRANCH DIRECTOR		PAUL BALFOUR
6. Control Operations/Work Assignments:						
<p>Structure Group: TASK: Assess structures and infrastructure that could be impacted by fire spread and develop structure defense plan. Identify structure needs and coordinate with OSFM liaison and ODF to determine structure defense resources available. PURPOSE: To prepare structures and private property values along the Highway 20 corridor and in the vicinity of the fire for impact from fire. END STATE: Structures and private property along the Highway 20 corridor and in the vicinity of the fire are assessed and defensible. Suppression activities to prevent fire impact to private property has occurred.</p> <p>IA Group: TASK: Follow IA response plan to provide IA response with identified resources for new fire starts within TFR. PURPOSE: To support initial attack response capability for the Malheur and Umatilla NFs. END STATE: Prompt and efficient mobilization of identified IA resources to new fire starts.</p>						
7. Special Instructions:						
<ul style="list-style-type: none"> • If Initial Attack occurs within the TFR, John Day Dispatch will coordinate with appropriate duty officer and contact Field Ops for response. • Field Operations will contact IA Group Supervisor and or Air Operations to coordinate response to new start. • Local forest Initial Attack frequencies will be used and provided in the IAP Communications Plan • The same process will be used for fires outside of TFR if assistance from Crockets Knob fire resources is requested. <p>Engines and tenders may NOT draft directly from natural water sources, such as creeks. Drafting will occur only from Fold-a-tanks.</p>						
8. Division/Group Communication Summary						
Function	Channel	RX Frequency N/W	RX Tone/NAC	TX Frequency N/W	TX Tone/NAC	Mode
COMMAND	1	170.4250	131.8	168.0750	131.8	A
COMMAND	2	170.4125	131.8	165.9625	131.8	A
TACTICAL	9	168.2500	131.8	168.2500	131.8	A
TACTICAL	11	168.3125	131.8	168.3125	131.8	A
AIR TO GROUND	12	167.3750		167.3750		A
AIR TO GROUND	13	167.0750		167.0750		A
9. Prepared By (Resource Unit Leader)			Approved By (Planning Section Chief)		Date	Time
JILL JOHNSON			MARGE HUTCHINSON		09/01/2022	2000

AIR OPERATIONS SUMMARY

PREPARED BY: Paul Balfour

PREPARED DATE/TIME: September 1, 1800hrs

INCIDENT NAME Crockets Knob	2. OPERATIONAL PERIOD: Date: 9/02/2022 Helibase Start Time: 0800 End Time: 2000 Sunrise: 0618 Sunset: 2000 CTL (Times valid for John Day PDT)
---------------------------------------	--

<p>3. REMARKS (Safety Notes, Hazards, Air Operations Special Equipment, etc.): General Aviation, See & Avoid YOU will be working in a complex fire environment, ensure YOU understand the Fire Traffic Area (FTA) Protocols. (12nm initial call, 7nm contact must be made prior to entering FTA)</p> <p>Bucket work, Retardant drops: ensure area is clear of ground personnel before dropping; watch for wires; be aware of potential for turbulence at ridge tops, saddles, canyons, etc *** BE AWARE OF FATIGUE, TAKE LONGER BREAKS WHEN FLYING IN SMOKEY CONDITIONS. *** Report all TFR intrusions to Air Operations, Air Support or Helibase as soon as possible.</p>	<p>4. MEDEVAC A/C: Order thru ATGS or JDIDC EMS Rotor A/G: VMED29 155.3475 Tx/Rx, Tone 156.7 Tx/Rx 38HX COMM: A/A Primary A/G Primary</p>	<p>5. TFR #2/8108 & 2/8109 Surface to 11,000' MSL 7NM Radius</p>
---	---	---

6. PERSONNEL	LWD	Phone	7. FREQUENCIES			8. FIXED-WING	# Avail / Type/ Make-Model / FAA N# / Base(s)
			AIR/AIR Primary	AM	FM		
AOBD: Paul Balfour O-61.43		509-993-8739	AIR/AIR Secondary	123.6250 (A8)		Fixed Wing/Buckets	DIVS order thru ATGS if up, or Communications
ASGS: Tim Lyda O- 61.44 9/8		541-761-2676	AIR/GRD Primary	128.2250 (A39)	167.0750 (A11)	ATGS Aircraft	(A-2) N3NT AC690D Jeremy Cowie or Relief Rob Rosetti
HEBM: Tyler Davis (T) 9/7		360-220-5359	AIR/GRD Secondary		169.7125 (A41)		LATs Order through Air Attack/AOBD Or JDIDC
HEMG:			AIR/GRD IA Primary		167.3750		
ATGS: Jeremy Cowie		541-575-3736	AIR/GRD IA Secondary		168.6375		
ATGS:			UNICOM	122.800		NOTES:	Grant Co Regional Airport, Haley Walker 541-575-1151 or 530-567-5987
JDIDC:		541-575-3110	DECK	163.1000			email cost: jdairbase@gmail.com

9. HELICOPTERS

FAA N#	TY	MAKE/MODEL	BASE	START	AVAIL	REMARKS	FAA N#	TY	MAKE/MODEL	BASE	START	AVAIL	REMARKS
519FF	3	A Star B3	John Day	0800	0830	A-13, Helitack ,Medivac Buckets	462WY	1	CH-46	John Day	0800	0830	A-7 Bucket
38HX	3	AS-350 A Star	Baker	0800	083	Short Haul/Buckets	448JS	1	S-61	John Day	0800	0830	A-22 Bucket
							625CK	1	S-61	John Day	0800	0830	Tanked A-62
							83BH	1	UH-60	John Day	0800	0830	Bucket A-29

INCIDENT RADIO COMMUNICATIONS PLAN (ICS 205)

Controlled Unclassified Information//Basic

1. Incident Name:	2. Date/Time Prepared:	3. Operational Period: DAY	
CROCKETS KNOB	Date: 09/01/2022 Time: 2000	Date/Time From: 09/02/2022 0600 FRI	Date/Time To: 09/02/2022 1800 FRI

4. Basic Radio Channel Use:

Zone Group	Ch #	Function	Channel Name/Trunked Radio System Talkgroup	Assignment	RX Freq	RX Tone/NAC	TX Freq	TX Tone/NAC	Mode (A,D, or M)	Remarks
	1	COMMAND	CMD 1	ALL DIVS	170.4250	131.8	168.0750	131.8	A	NORTH - INDIAN ROCK LO
	2	COMMAND	CMD 2	ALL DIVS	170.4125	131.8	165.9625	131.8	A	SOUTH - DIXIE BUTTE LO
	4	TACTICAL	TAC 4	DIV A	168.0500	131.8	168.0500	131.8	A	
	5	TACTICAL	TAC 5	DIV E	168.2000	131.8	168.2000	131.8	A	
	6	TACTICAL	TAC 6	DIV M	168.6000	131.8	168.6000	131.8	A	
	7	TACTICAL	TAC 7	DIV S	166.7250	131.8	166.7250	131.8	A	
	8	TACTICAL	TAC 8	DIV Z	166.7750	131.8	166.7750	131.8	A	
	9	TACTICAL	TAC 9	CONTIG	168.2500	131.8	168.2500	131.8	A	CONTINGENT, IA, STRUCTURE
	10	COMMAND	N DIXIE	ALL DIVS	172.4000	131.8	166.2000	123.0	A	IA / BACKUP IF CMD NET INOP
	11	TACTICAL	MAF TAC	IA	168.3125	131.8	168.3125	131.8	A	IA ONLY
	12	AIR TO GROUND	A/G 38	MALHEUR	167.3750		167.3750		A	A/G FOR MALHEUR N.F.
	13	AIR TO GROUND	A/G PRI	ALL DIVS	167.0750		167.0750		A	AIR OPS ONLY
	14	AIR TO GROUND	A/G SEC	ALL DIVS	169.7125		169.7125		A	AIR OPS ONLY
	15	TACTICAL	VMED 29	ALL DIVS	155.3475	156.7	155.3475	156.7	A	MEDICAL EVAC ONLY - LIFEFLIGHT
	16	AIR GUARD	AIRGUARD	ALL DIVS	168.6250		168.6250	110.9	A	EMERGENCY AIR OPS ONLY

5. Special Instructions: COMMUNICATIONS (208) 891-8093

6. Prepared By (Communications Unit Leader)	Name: MISSY PARKER	Signature: <i>Missy Parker</i>
ICS 205	IAP Page	Date/Time: 09/01/2022 2000

Controlled Unclassified Information//Basic

Crocketts Knob – Whitebark Pine



Photos courtesy of Amanda Hardman, USFS and NWconifers.com

Whitebark pine is found at the highest elevations of the Malheur National Forest and across the western United States. It is an early colonizer of high elevation plant communities and often grows very slowly as a “krummholz”, or dwarfed, twisted, unique tree because of the harsh environment in which it endures. Mortality to whitebark pine on the Malheur has been caused by white pine blister rust (an invasive fungus), mountain pine beetle, fire, and drought. Whitebark pine is anticipated to be a threatened listed plant species across much of Region 6 this fall and the Malheur has invested in efforts over the years to inventory, monitor, and treat whitebark pine stands to aid in our understanding and the protection of this species. Many of these investments have specifically been applied to stands in the Indian Rock/Vinegar Hill Scenic Area. Cone collection has also been completed at multiple locations across the forest to maintain a seed source and for rust-resistance studies. It is important to consider protection of this species during the incident.

IDENTIFICATION:

Needles: Whitebark pine has 5 needles per bundle, like western white pine, but western white pine needles are longer and thinner, and have a bluish color.

Cones: The cones are only 2 to 3 inches long. They are purple, turning brown as they mature. The cones remain on the tree and do not open when they dry. But birds, most notably Clark's nutcracker, easily pull apart the cones to get the seeds, so only cone fragments are found on the ground.

Bark: The bark is light gray, and the twigs are flexible like rope. On larger trees it becomes scaly.

Uses: Whitebark pine produces the largest seeds of all the conifers of the Northwest. These seeds, often called "pine nuts," are edible. They are a vital food source for Clark's nutcrackers, which in turn are vital to seed dispersal for whitebark pine. Nutcrackers cache the seeds in the ground, and some of the seeds sprout there. The two are so dependant on one another, if you see one of them the other is likely to be close by.

Names: The common and scientific names describe the whitebark pine. *Albicaulis* means "white stemmed." To remember the name, think of it as the "Albino-bark Pine." Other common names: Pitch pine, scrub pine, and creeping pine. John Muir called it "Dwarf Pine."

Info from <http://nwconifers.com/nwhi/whitebarkpine.htm#>

DEMOB MESSAGE

THREE DAY DEMOB LIST

Friday 9-2-22

Equipment

E-32 1000 (MBM2) BRUCE YOUNG LOGGING

Saturday 9-3-22

NO SCHEDULED DEMOBS

Sunday 9-4-22

Overhead

O-21 1900 (TFLD) CEARNS, MICHAEL

Crocketts Knob Fire DEMOB Procedures

1. Complete CTRs and follow Finance IAP Message.
2. Return any checked-out equipment and/or radios.
3. Complete Ground Support inspection if applicable.
4. **ALL VEHICLES MUST GO THROUGH THE WEED WASH.**
5. Contact DEMOB at 509-432-6143 to finalize process.
DEMOB Email: 2022.crockettsknob.demob@firenet.gov

NOTE: All air travelers need to contact DEMOB to make arrangements 72 hours prior to departure.



Weed Wash

All vehicles must go through weed wash to Demob. Located on Hwy 26 approx. 6 miles West of Prairie City on the North side (left) of the Hwy.





Crockets Knob Fire Information 541-625-0892



2022.crocketsknob@firenet.gov

<https://www.facebook.com/CrocketsKnobFire>

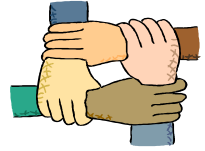
<https://inciweb.nwccg.gov/incident/8355/>

Talking Points

- The Crockets Knob fire is being controlled using a Full Suppression Strategy with Public and Firefighter Safety and value protection as top priorities.
- Firefighters have been using mapping technology to accurately locate and identify structures, values, and hazards that may be impacted by the fire as well as landmarks that may be useful in fighting the fire.



Human Resource Message



Crockets Knob Fire - September 2, 2022

Taking a Mindful Moment: At the end of the day, start of the day, or in a moment during the day, taking a moment to pause and focus your attention can bring numerous benefits that go from the fireline, to the office, to home and back again.

What is Mindfulness? Mindfulness is attention awareness training. It is a simple practice that allows us to ground and center ourselves in the moment through the practice of focusing our attention. The best athletes, artists musicians, military members and others are increasingly integrating mindfulness practices into their routines to increase performance and cope with stress.

“Mindfulness enables us to engage fully in whatever we are doing, which generally improves our performance, enhances our effectiveness, and increases our sense of fulfillment.” – Dr. Russ Harris

Unhooking From What is Unhelpful- is a term Dr. Harris uses to describe the art of working with difficult, unhelpful thoughts, feelings, sensations, and memories. When we “unhook” we create space for us to notice what it is that is hooking us and we can see the thoughts, feelings, sensations, etc. for what they are – pictures and constructions of words in our minds.

Mindful meditation practice allows us to intentionally put aside the tendency to elevate some aspects of our experience and reject others.

***Click on the QR code to learn more about mindfulness.
The offered guided breaks may help you to recharge.***

“Give yourself permission to allow this moment to be exactly as it is and allow yourself to be exactly as you are.” – Jon Kabat-Zinn



Susie Manezes/Jon Tipton- NW-Team 12- (HRSPs) Contact Number: 208-739-0255



Logistics Message Crockets Knob Fire

ICP @ 740 Overholt St, Prairie City Oregon 97869

Lead Medical Unit Diana Braun Phone 509-348-0091 or by Radio on CMD Channel

Communications: Crockets Knob ICP
24-Hours
Phone: **208-891-8093**

Meal Service Hours: Breakfast/Lunch at 0700
Dinner at 1800

**** Note:** Meal count changes need to be submitted to BCMG Tully Pritchett
4 hours prior to delivery time.

Shower Hours: 0430 to 1200
1400 to 2130

Ordering: 0700-2100

Email: Steven.Huang@dnr.wa.gov

****NOTE:** General Messages need separated by O#, E#, and C# request with fire name at top of page. Please include: Point of Contact, Report To, Date & Time needed. Name requests must have justification with minimum 48-hour reporting.

Taylor Flats Base Camp

4.5 miles North of Hwy 26 and Hwy 7 Junction on Hwy 7

Supply: 0630-2130

direct cache orders

call or text Jeremy Marquadt at 360-880-4244

or

email jeremy.marquadt@DNR.WA.GOV

Meals: Breakfast 0500-0900; Dinner 1800-2200

Showers: 0500-1200 and 1600-2200

Ground Support: 0600-2130

Medical Support : 0530-2130



Finance Message



Finance Email: 2022.crocketsknob.finance@firenet.gov

SUBJECT: *Include Key Word* **TIME** for Overhead, Crews & Cooperators

SUBJECT: *Include Key Word* **EQUIPMENT** for Contract Resources

Finance Contact Numbers

PERSONNEL: 509-823-6642

EQUIPMENT: 208-890-4869

Finance Section Chief: 509-423-6011

Please Scan this QR code to send all required documents to finance or use the email below



FINANCE CHECK IN: 2022.crocketsknob.finance@firenet.gov

PLEASE ENSURE THE BELOW DOCUMENTS ARE EMAILED

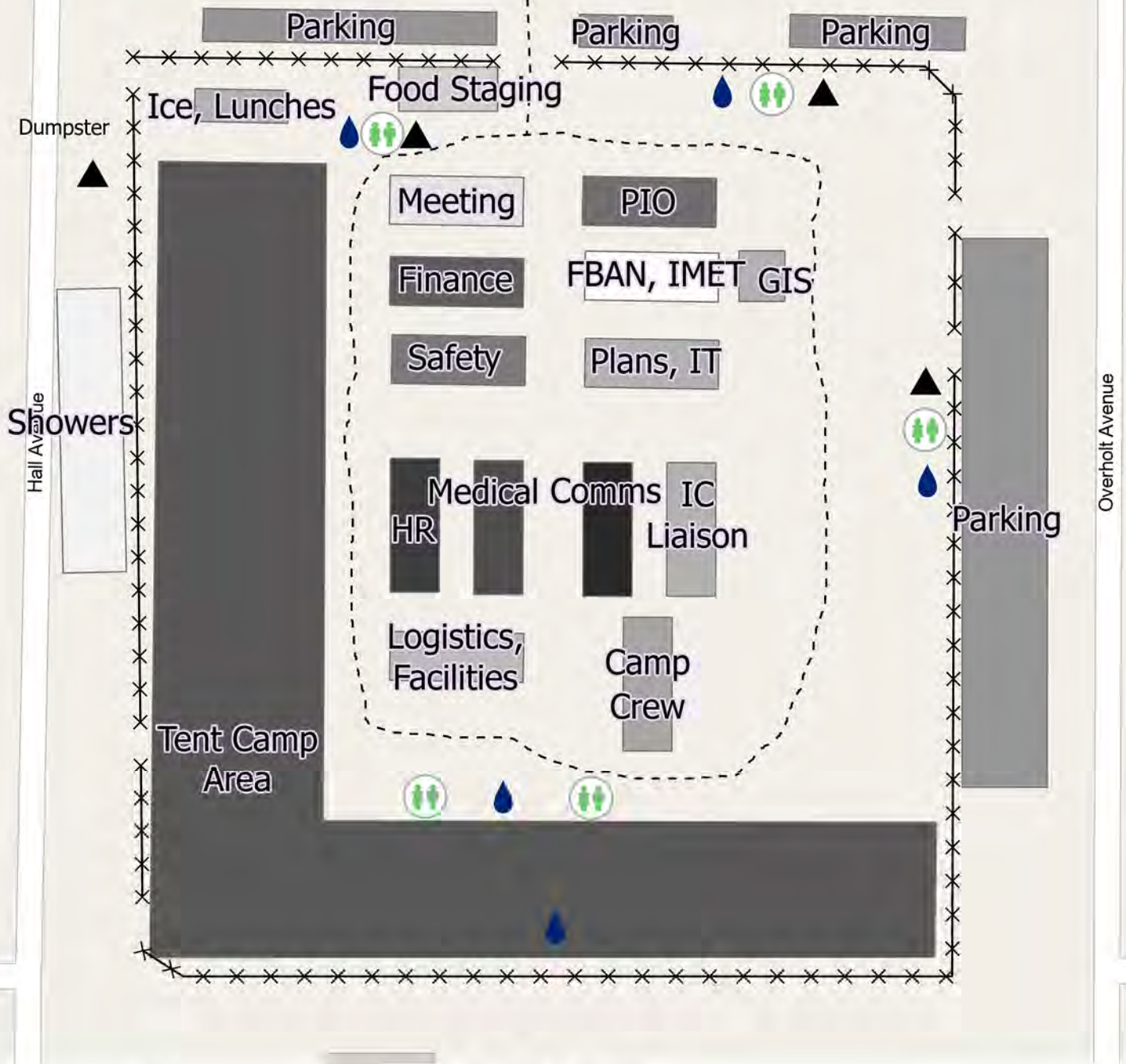
Overhead, Crews & Cooperator Resources	Contract Resources
<ul style="list-style-type: none"> • Check-In: Crew Manifest, Cooperative Agreement (if applies), AD Hire Letter, Resource Order • Daily: Crew Time Report (CTR), Shift Tickets • Demob: Signed OF288, Final Equipment Use Invoice (Cooperator) If you don't have a way to sign you must come to finance. 	<ul style="list-style-type: none"> • Check-In: Resource Order, Contract/VIPR Agreement (make sure you have your UEI, Pre-Inspection • Daily: Shift Tickets, receipts (fuel issues, claims, etc.) • Demob: Contractor Evaluations, Final Shift Tickets and receipt(s) for Addition/Deductions, Post-Inspection, Final Signed Invoices If you don't have a way to sign you must come to finance

REMINDERS

- ★ PLEASE ENSURE YOU INCLUDE LOCATION OF WHERE YOU ARE WORKING (BRANCH OR DIVISION) ON CTR OR SHIFT TICKET
- ★ PLEASE SHOW YOUR LUNCH BREAK
- ★ PLEASE USE MILITARY TIME (0001-2400)
- ★ WHEN CLAIMING HAZARD PAY YOU MUST INCLUDE THE SUPPRESSION ACTION BEING PERFORMED. THIS INCLUDES OPERATIONS WHICH DIRECTLY SUPPORT CONTROL OF FIRE (E.G., ACTIVITIES TO EXTINGUISH THE FIRE, FIREFIGHTING, GROUND SCOUTING, SPOT FIRE PATROLLING, SEARCH AND RESCUE OPERATIONS, AND BACKFIRING).

Prairie City Elementary School
(no parking)

10th Street



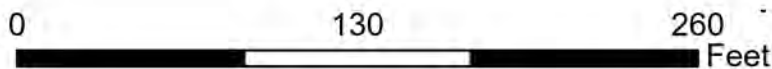
ICP Camp

Crookets Knob
OR-MAF-022199
9/1/2022

Camp Features

-  Handwashing Station
-  Toilet
-  Trash
-  Fenceline
-  Service Road

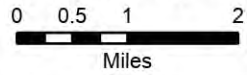
Devin Scheid



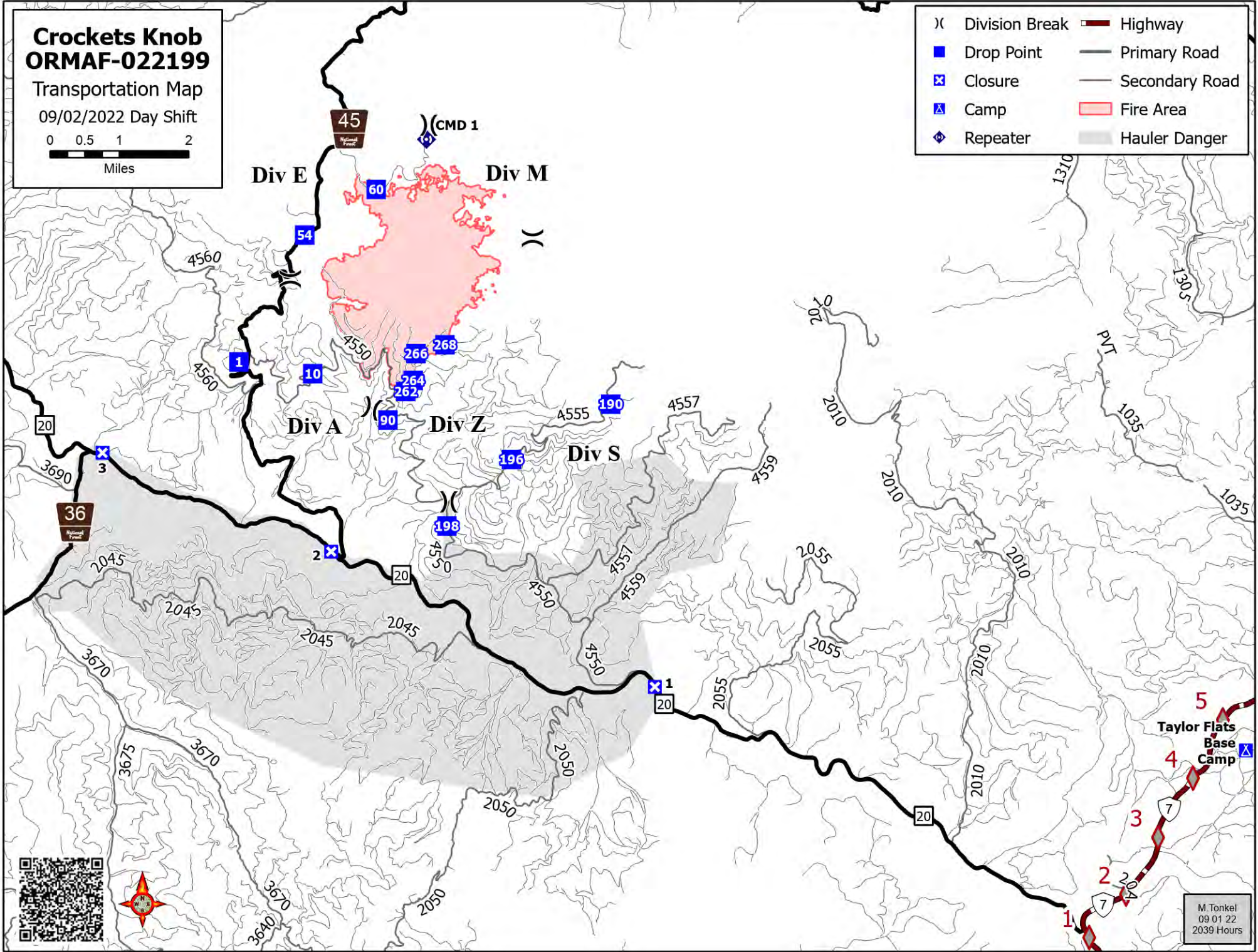
Crocketts Knob ORMAF-022199

Transportation Map

09/02/2022 Day Shift



- (X) Division Break
- Drop Point
- ⊠ Closure
- ▲ Camp
- ◆ Repeater
- ▬ Highway
- ▬ Primary Road
- ▬ Secondary Road
- Fire Area
- Hauler Danger



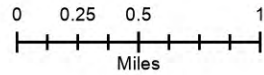
M. Tonkel
09 01 22
2039 Hours

118°46'W 118°45.5'W 118°45'W 118°44.5'W 118°44'W 118°43.5'W 118°43'W 118°42.5'W 118°42'W 118°41.5'W 118°41'W 118°40.5'W 118°40'W 118°39.5'W 118°39'W 118°38.5'W 118°38'W

Crocketts Knob ORMAF-022199 IAP Map

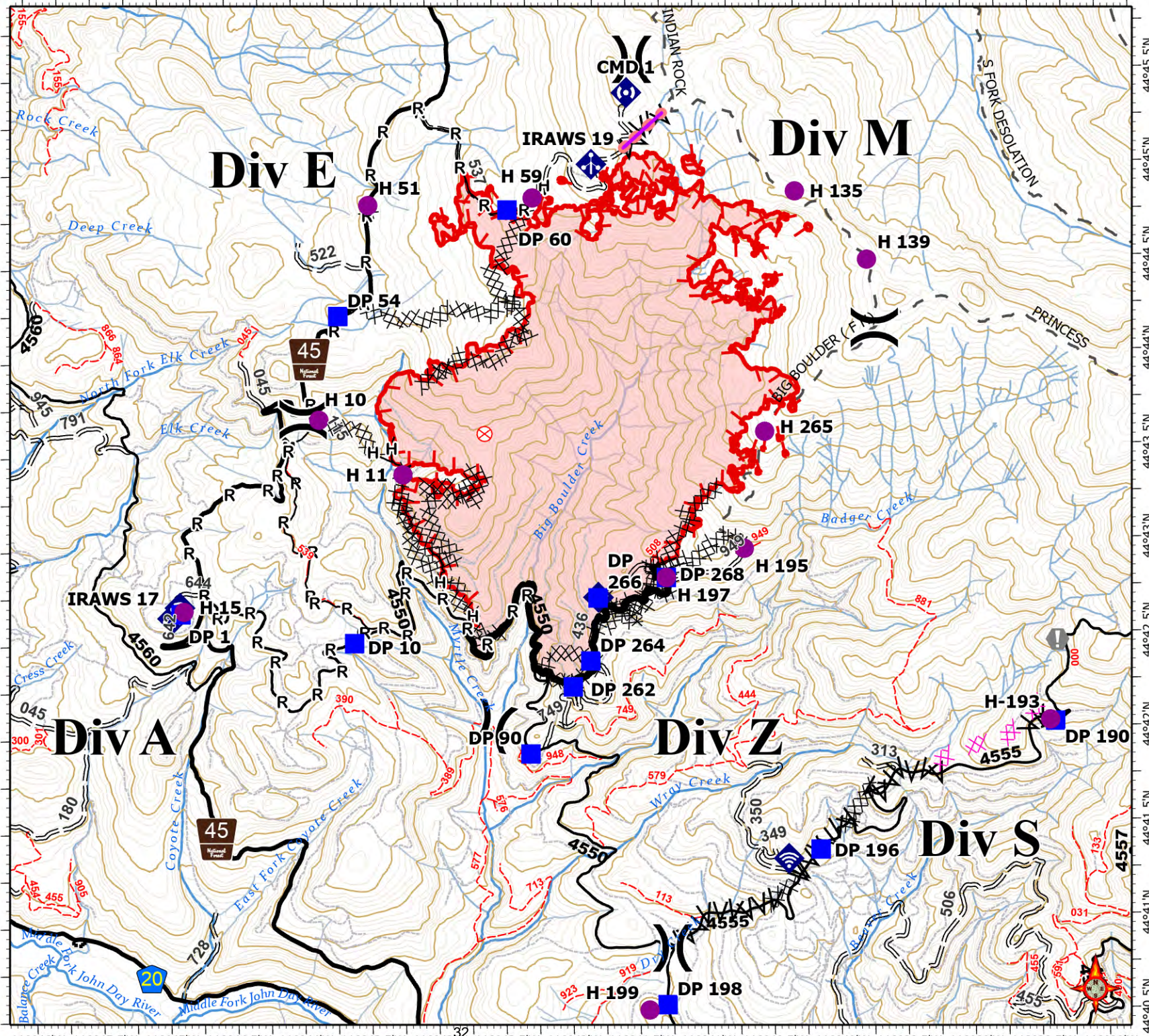
09/02/2022 Day Shift
2,881 acres at 09/01/2022 @ 1230

- Helispot
- ⌘ Division Break
- Drop Point
- ⊗ Fire Origin
- Value at Risk
- ⬢ Mobile Weather Unit
- ⬢ Internet Access
- ⬢ Repeater
- ⬢ Pump
- ⌘ Completed Dozer Line
- ⌘ Completed Fuel Break
- ⌘ Completed Hand Line
- ⌘ Completed Mixed Construction Line
- ⌘ Completed Road as Line
- ⌘ Planned Dozer Line
- Retardant Drop
- ▬ Contained
- ▬ Uncontained
- ▬ Fire Area



S. Bushnell
09 01 22
2032 Hours

Acres from IR and sketch
Datum: North American 1983



118°46'W 118°45.5'W 118°45'W 118°44.5'W 118°44'W 118°43.5'W 118°43'W 118°42.5'W 118°42'W 118°41.5'W 118°41'W 118°40.5'W 118°40'W 118°39.5'W 118°39'W 118°38.5'W 118°38'W

Coordinate Table

FC Point Type	Label	Latitude WGS84 DDM	Longitude WGS84 DDM
Camp	Taylor Flats Base Camp	44° 37.492' N	118° 27.375' W
Closure	1	44° 38.473' N	118° 37.716' W
Closure	2	44° 40.261' N	118° 43.341' W
Closure	3	44° 41.562' N	118° 47.318' W
Closure	4	44° 48.847' N	118° 40.688' W
Dip Site	Heli-well	44° 39.010' N	118° 40.536' W
Drop Point	DP 1	44° 42.662' N	118° 44.886' W
Drop Point	DP 10	44° 42.495' N	118° 43.594' W
Drop Point	DP 190	44° 42.027' N	118° 38.372' W
Drop Point	DP 196	44° 41.363' N	118° 40.138' W
Drop Point	DP 198	44° 40.550' N	118° 41.299' W
Drop Point	DP 262	44° 42.246' N	118° 41.967' W
Drop Point	DP 264	44° 42.383' N	118° 41.834' W
Drop Point	DP 266	44° 42.717' N	118° 41.772' W
Drop Point	DP 268	44° 42.820' N	118° 41.260' W
Drop Point	DP 54	44° 44.234' N	118° 43.682' W
Drop Point	DP 60	44° 44.786' N	118° 42.405' W
Drop Point	DP 90	44° 41.893' N	118° 42.291' W
Helispot	H-193	44° 42.035' N	118° 38.409' W
Helispot	H 10	44° 43.684' N	118° 43.835' W
Helispot	H 11	44° 43.387' N	118° 43.214' W
Helispot	H 135	44° 44.863' N	118° 40.257' W
Helispot	H 139	44° 44.494' N	118° 39.727' W
Helispot	H 15	44° 42.675' N	118° 44.864' W
Helispot	H 195	44° 42.968' N	118° 40.675' W
Helispot	H 197	44° 42.820' N	118° 41.260' W
Helispot	H 199	44° 40.523' N	118° 41.434' W
Helispot	H 265	44° 43.588' N	118° 40.508' W
Helispot	H 51	44° 44.821' N	118° 43.445' W
Helispot	H 59	44° 44.848' N	118° 42.216' W
Incident Command Post	Prairie City	44° 27.285' N	118° 42.554' W
Internet Access		44° 42.720' N	118° 41.769' W
Internet Access		44° 42.698' N	118° 44.894' W
Internet Access		44° 41.317' N	118° 40.378' W

COVID-19 Mitigations for Crockets Knob Fire

- Masks are not required indoors unless working in a county with a HIGH COVID-19 community level. Currently, Grant County community level is MODERATE (masking indoors is optional).
- Conduct daily verbal screening checks within crews, report any COVID-like symptoms to your direct supervisor. Supervisors should report any positive symptoms to the Medical Unit for next steps.
- Observe social distancing standards while waiting in line for food and limit contact with others outside of your crew in the food service line. If possible, send crew representatives to pick up meals.
- Practice good personal hygiene, wash hands frequently and disinfect high-traffic areas on a regular basis.
- Limit close contact between firefighters and the public as much as possible to prevent exposure and spread.





EMERGENCY PLAN INCIDENT WITHIN AN INCIDENT

ON SCENE INCIDENT COMMANDER

In the event of an accident or medical incident of any size, your primary responsibility is to ENSURE that the victim(s) receive prompt and effective Triage, Treatment, Extrication and Transport.

- **ENSURE THE MEDICAL INCIDENT REPORT IN THE INCIDENT ACTION PLAN IS BEING USED AND FOLLOWED- *IF DETERMINED TO BE A GREEN, DO NOT DECLARE EMERGENCY TRAFFIC AND ONLY COMPLETE LINE 1-4 ON MIR*.**
- Conduct size-up of the incident nature of accident, number type of resources involved, latitude and longitude location (DD°MMM.MM format): notify incident communications center and supervisor, request assistance as needed.
- Order and coordinate medical and support response to the accident.
- Evaluate special needs (law enforcement, haz mat, etc.).
- Clear the command frequency if medical emergency, coordinate with incident communications and air attack for air medical transportation needs.
- Preserve and photograph the scene for accident investigation.
- Remain aware of surroundings and the status of the main incident (delegate personnel to monitor the main fire) to ensure safety of medical treatment personnel.
- Until relieved, supervise and manage all personnel involved at the incident scene.

MEDICAL PLAN (ICS 206 WF)

Incident/Project Name		1. Operational Period						
Crocketts Knob		September 2, 2022 0600-1800						
2. Ambulance Services								
Name	Complete Address	Phone	Advanced Life Support (ALS)					
Blue Mountain Ambulance	170 Ford Rd John Day, OR	Command/911	Yes	No				
X								
3. Air Ambulance Services								
Name	Phone	Location						
Life Flight Network	Command/911	20-30 min flight - LaGrande, OR						
Life Flight Network	Command/911	Pendleton, OR						
4. Hospitals								
Name Complete Address	Coordinate Standard Degrees Decimal Minutes DD° MM.MMM' N - Lat DD° MM.MMM' W - Long		Travel Time From Crockett's Knob		Phone	Helipad		Level of Care Facility
	Lat:	Long:	Air	Gnd		Yes	No	
Blue Mountain Hospital 170 Ford Rd John Day, OR	42° 19.074' N	122°49.836' W	20 mins	1.5 hrs	541-575-1311	X		Level 4
	44°4.1667' N	121°16.0833' W	1 hr	4 hrs	541-882-6311	X		Level 2
St Charles Medical Center 2500 NE Neff Rd Bend, OR	45°32.616' N	122°6695' W	2 hrs	5 hrs	503-413-4321	X		Level 1 Trauma Burn Center
5. Division Branch Group	Capability			Personnel				
Div. A				(E-27) Ambo 1 (O-96) Medic 4 (O-93) Medic 2				
Div. E				(O-94) Medic 1 (O-7) EMT (E-87) Blackwoods REM				
Div. M				Utilize nearest medical resource				
Div. S				(O-95) Medic 3				
Div. Z				(O-9) REM 9 (E-51) Ambo 2				
Taylor Flats/Bates SP				(E-88) Ambo 3				
6. Prepared By (Medical Unit Leader)			7. Date/Time	8. Reviewed By (Safety Officer)			9. Date/Time	
Diana Braun <i>Diana Braun</i>			09/01/2022 1800	Jack Cates <i>Jack Cates</i>			09/01/2022 1800	

Short-Haul Operations

CAPABILITIES

- During an operational Short-Haul the helicopter is capable of inserting Short-Haulers into an area with tight canopy cover and/or technical terrain.
- Haul line lengths range from 100 feet to 350 feet.
- Short hauler and/or medical gear can be delivered to the medical scene even if extraction by short-haul is not necessary.

ORDERING

- EMT or Medical Incident IC determines medical extraction is required.
- Follow local established procedures and/or Medical Incident Report (MIR) in the IRPG.
- Confirm aircraft type, call sign, estimated time of arrival and frequency.
- Give site selection information when ordering: hazards (i.e. ash, smoke, snags, aerial), tree height, terrain, and patient transport configuration (supine or seated position). Repeat hazards and give updated weather conditions as well as brief patient update to responding helicopter.

PROCESS: The helicopter will fly to the coordinates provided. They will make contact with ground personnel on scene with the patient using an identified air-to-ground frequency. The helicopter will complete a short-haul recon and size up, gather patient update information and then fly to a landing zone (LZ) to configure for short-haul operations. The helicopter will be monitoring the appropriate air-to-ground, air guard and victor frequencies. From this point, ground resources should only contact the helicopter in case of an emergency. During the insertion and extraction process ground personnel must be clear of the area.

ON SCENE: EXPECT THE FOLLOWING

- 1 or 2 rescuers (at least one qualified as an EMT or higher)
- Backboard (if needed and not already on scene)
- All equipment necessary for patient extraction

The Patient Extraction Bag accommodates most backboards.
-A patient on a backboard, TRS, SKED or litter will be inserted into the bag.



The Seat Harness is used for patients not requiring the use of a backboard.



IAP INSERT

MEDICAL PLAN (ICS 206 WF)

Controlled Unclassified Information//Basic

Medical Incident Report

FOR A NON-EMERGENCY INCIDENT, WORK THROUGH CHAIN OF COMMAND TO REPORT AND TRANSPORT INJURED PERSONNEL AS NECESSARY.

FOR A MEDICAL EMERGENCY: IDENTIFY ON SCENE INCIDENT COMMANDER BY NAME AND POSITION AND ANNOUNCE "MEDICAL EMERGENCY" TO INITIATE RESPONSE FROM IMT COMMUNICATIONS/DISPATCH.

Use the following items to communicate situation to communications/dispatch.

1. CONTACT COMMUNICATIONS / DISPATCH (**Verify correct frequency prior to starting report**)

Ex: "Communications, Div. Alpha. Stand-by for Emergency Traffic."

2. INCIDENT STATUS: *Provide incident summary (including number of patients) and command structure.*

Ex: "Communications, I have a Red priority patient, unconscious, struck by a falling tree. Requesting air ambulance to Forest Road 1 at (Lat./Long.) This will be the Trout Meadow Medical, IC is TFLD Jones. EMT Smith is providing medical care."

Severity of Emergency / Transport Priority	<input type="checkbox"/> RED / PRIORITY 1 Life or limb threatening injury or illness. Evacuation need is IMMEDIATE <i>Ex: Unconscious, difficulty breathing, bleeding severely, 2° – 3° burns more than 4 palm sizes, heat stroke, disoriented.</i> <input type="checkbox"/> YELLOW / PRIORITY 2 Serious Injury or illness. Evacuation may be DELAYED if necessary. <i>Ex: Significant trauma, unable to walk, 2° – 3° burns not more than 1-3 palm sizes.</i> <input type="checkbox"/> GREEN / PRIORITY 3 Minor Injury or illness. Non-Emergency transport <i>Ex: Sprains, strains, minor heat-related illness.</i>	
Nature of Injury or Illness & Mechanism of Injury		<i>Brief Summary of Injury or Illness (Ex: Unconscious, Struck by Falling Tree)</i>
Transport Request		<i>Air Ambulance / Short Haul/Hoist Ground Ambulance / Other</i>
Patient Location		<i>Descriptive Location & Lat. / Long. (WGS84)</i>
Incident Name		<i>Geographic Name + "Medical" (Ex: Trout Meadow Medical)</i>
On-Scene Incident Commander		<i>Name of on-scene IC of Incident within an Incident (Ex: TFLD Jones)</i>
Patient Care		<i>Name of Care Provider (Ex: EMT Smith)</i>

3. INITIAL PATIENT ASSESSMENT: *Complete this section for each patient as applicable (start with the most severe patient)*

Patient Assessment: See IRPG page 106

Treatment:

4. TRANSPORT PLAN:

Evacuation Location (if different): *(Descriptive Location (drop point, intersection, etc.) or Lat. / Long.)* Patient's ETA to Evacuation Location:

Helispot / Extraction Site Size and Hazards:

5. ADDITIONAL RESOURCES / EQUIPMENT NEEDS:

Example: Paramedic/EMT, Crews, Immobilization Devices, AED, Oxygen, Trauma Bag, IV/Fluid(s), Splints, Rope rescue, Wheeled litter, HAZMAT, Extrication

6. COMMUNICATIONS: Identify State Air/Ground EMS Frequencies and Hospital Contacts as applicable

Function	Channel Name/Number	Receive (RX)	Tone/NAC *	Transmit (TX)	Tone/NAC *
COMMAND					
AIR-TO-GRND					
TACTICAL					

7. CONTINGENCY: **Considerations:** *If primary options fail, what actions can be implemented in conjunction with primary evacuation method? Be thinking ahead.*

8. ADDITIONAL INFORMATION: *Updates/Changes, etc.*

REMEMBER: Confirm ETA's of resources ordered. Act according to your level of training. Be Alert. Keep Calm. Think Clearly. Act Decisively.

Controlled Unclassified Information//Basic