

# Incident Action Plan CROCKETS KNOB



Saturday, September 3<sup>rd</sup>, 2022  
0600-1800 Operational Period



**OR-MAF-022199**  
**P6 POXK (0604)**  
**221 IWR**

**SCAN QR CODE**  
For  
**BRIEFING LINK**  
**DOWNLOAD IAP**  
**DOWNLOAD MAPS**  
Send in **PHOTOS**  
**CHECK-IN**  
Submit **TIME** to **FINANCE**

This page intentionally left blank.



## INCIDENT OBJECTIVES (ICS 202)

<b>1. Incident Name:</b>	<b>2. Operational Period: DAY</b>	
CROCKETS KNOB	Date/Time From: 09/03/2022 0600      SAT	Date/Time To: 09/03/2022 1800      SAT
<b>3. Objective(s):</b>		
<ul style="list-style-type: none"> <li>• Identify, evaluate and reduce risks to firefighters and the public through the use of Deliberate Risk Assessment process.</li> <li>• Minimize acres burned and impacts to communities and infrastructure by completing a strategic risk assessment to guide operations in the development of strategies and tactics to be implemented by fire personnel.</li> <li>• Protect tribal, cultural, aquatic and wildlife resources, and sensitive plant sites.</li> <li>• Provide Initial Attack response and assistance for private and public lands within the delegated area.</li> <li>• Maintain and enhance relationships with cooperators, stake holders, landowners, and communities by providing accurate and timely information.</li> <li>• Manage cost commensurate with values at risk and maintain fiscal accountability.</li> <li>• Treat each other with dignity and respect and act in a professional manner while on the fire and in the community.</li> <li>• Ensure COVID-19 best management practices are in place and follow local CDC guidelines.</li> </ul>		
<b>4. Operational Period Command Emphasis:</b>		
Implement strategies and tactics to achieve incident objectives with the least amount of risk practical and the highest probability of success.		
<b>General Situational Awareness:</b>		
Fighting fire in light flashy fuels under hot, dry, and windy conditions poses great potential for rapid fire growth. Anticipate changes in fire behavior before it happens and ensure Lookouts, Communications, Escape Routes, and Safety Zones are adequate. Maintain accountability of all assigned resources while engaged on the fire line.		
<b>5. Site Safety Plan Required?</b> Yes <input type="checkbox"/> No <input checked="" type="checkbox"/>		
<b>Approved Site Safety Plan(s) Located</b>		
<b>6. Incident Action Plan</b> (the items checked below are included in this Incident Action Plan):		
<input checked="" type="checkbox"/> ICS 202 <input checked="" type="checkbox"/> ICS 203 <input checked="" type="checkbox"/> ICS 204 <input checked="" type="checkbox"/> ICS 205 <input type="checkbox"/> ICS 205A <input checked="" type="checkbox"/> ICS 206	<input type="checkbox"/> ICS 207 <input type="checkbox"/> ICS 208 <input checked="" type="checkbox"/> ICS 220 <input checked="" type="checkbox"/> Map/Chart <input checked="" type="checkbox"/> Weather Forecast/Tides/Currents	<b>Other Attachments:</b> <input checked="" type="checkbox"/> HR MESSAGE <input checked="" type="checkbox"/> UNIT LOG <input type="checkbox"/> _____ <input type="checkbox"/> _____
<b>7. Prepared by:</b> MARGE HUTCHINSON	<b>Position/Title:</b> PSC2	<b>Signature:</b> <i>Marge Hutchinson</i>
<b>8. Approved by Incident Commander:</b>	<b>Name:</b> JEFF DIMKE	<b>Signature:</b> <i>Jeff Dimke</i>
<b>ICS 202</b>	<b>IAP Page</b>	<b>Date/Time:</b> 09/02/2022 2000


## ORGANIZATION ASSIGNMENT LIST (ICS 203)

<b>1. Incident Name:</b>		<b>2. Operational Period:</b> DAY	
CROCKETS KNOB		Date/Time From: 09/03/2022 0600 SAT	Date/Time To: 09/03/2022 1800 SAT
<b>3. Incident Commander(s) and Command Staff:</b>		SUPPLY UNIT THAD FRATER (T)	
IC/UC	JEFF DIMKE JEFF BOUSCHOR (T)	GROUND SUPPORT UNIT	DAVE HARSH
DEPUTY	BOB SHINDELAR	COMMUNICATIONS UNIT	MISSY PARKER JOHN LYONS (T)
SAFETY OFFICER	TROY CORN; JACK CATES ERIC MILLER (T)	MEDICAL UNIT	EAMONN RYAN DIANA BRAUN
INFORMATION OFFICER	JOEL BRUMM LIV STECKER	SECURITY UNIT	TOM TAYLOR JOE ROBERTSON (T)
LIAISON OFFICER	SCOTT CRAWFORD JEFF SEVIGNEY (T)	FOOD UNIT	ALEX LILLA
HUMAN RESOURCE SPECIALIST	SUSIE MANEZES (ICP) JON TIPTON (TF) (T)	<b>7. Operations Section:</b>	
<b>4. Agency/Organization Representative(s):</b>		OPS SECTION CHIEF	AARON ROWE JEROMY WILSON (T)
<b>Agency/Organization</b>	<b>Name</b>	PLANNING OPS	KURT RANTA CODY ACORD (T)
USFS - MALHEUR	ANN NIESEN CRAIG TRULOCK	STRATEGIC OPS	TONY ENGEL
USFS - MALHEUR	JOSHUA GILES	STAGING AREA	
USFS - UMATILLA	STEPHANEY KERLEY	DIVISION/GROUP	A BOB HINDS IAN MCCORD (T)
ODF	ALLISON RAYBURN	DIVISION/GROUP	E RICK WOODALL ANDREW STINCHFIELD (T)
LEAD READ	MATT SMITH (T)	DIVISION/GROUP	M BRAD BRYANT
INTERAGENCY RESOURCE REPRESENTATIVE	PAUL GIBBS 951-903-4135	DIVISION/GROUP	S FIDEL VERDUZCO
<b>5. Planning Section:</b>		DIVISION/GROUP	Z LARRY LEACH
CHIEF	MARGE HUTCHINSON	DIVISION/GROUP	CONTING/STRU CT/IA JIM WALKOWSKI
DEPUTY	ERIC BLACK HOWARD JOHNSON (VIRTUAL)		
RESOURCES UNIT	JILL JOHNSON	<b>7b. Air Operations Branch:</b>	
SITUATION UNIT		AIR OPS BRANCH DIRECTOR	PAUL BALFOUR
DOCUMENTATION UNIT	DEIDRE SMITH (VIRTUAL)	AIR SUPPORT SUPERVISOR	TIM LYDA
DEMOBILIZATION UNIT	MIKE HESTON (VIRTUAL)		
FIRE BEHAVIOR ANALYST	DON STRAND	<b>8. Finance/Administration Section:</b>	
TRAINING SPECIALIST		CHIEF	CHERI FULLER
GIS SPECIALIST	SHAWN BUSHNELL	DEPUTY	CHRISTINA GOEBEL
TECHNOLOGY SUPPORT SPECIALIST	GEORGE JENKINS BRADLEY DILG	TIME UNIT	STEVE CROW
INCIDENT METEOROLOGIST	DEREK WILLIAMS	PROCUREMENT UNIT	MARK BOHNET
<b>6. Logistics Section:</b>		INCIDENT CONTRACT PROJ INSP	ROB HECHINGER
CHIEF	KEVIN HAUGHTON (TAYLOR FLATS) PAUL FOOTEN (ICP) (T)	COST UNIT	KAY HIGH (VIRTUAL)
FACILITIES UNIT	LEE VENNING (TAYLOR FLATS) RICHARD CROWTHER (ICP)		
BASE CAMP MANAGER	TULLY PRITCHETT (ICP)		
SUPPLY UNIT	JOHN KAUPA		
<b>9. Prepared By:</b>	<b>Name:</b> JILL JOHNSON	<b>Position/Title:</b> RESL	<b>Signature:</b>
ICS 203	IAP Page	<b>Date/Time:</b> 09/02/2022 2000	



# Fire Weather Forecast

**FORECAST NO: 7**  
**PREDICTION FOR: Saturday-Sunday**  
**DATE: September 3<sup>rd</sup> – 4<sup>th</sup>, 2022**  
**FORECAST ISSUED: 2000 September 2<sup>nd</sup>, 2022**

**Fire: Crockets Knob**  
**UNIT: OR-MAF-022199**  
**Incident Meteorologist: Derek Williams**  
**Signed:** 

**WEATHER DISCUSSION:** A trough of low pressure will bring cloud cover to the area this morning. There is a slight chance of late morning or early afternoon shower or thunderstorm although most shower activity will be northeast of the fire area. Little to no rain is expected. Winds will shift to the southwest in the morning then west-northwest in the afternoon as a cool front brings cooler temperatures and higher humidity to the area.

**TODAY:**

**WEATHER:** Cloud cover diminishing through the early morning hours. Slight chance of late morning early afternoon isolated showers and thunderstorms.  
**MAX TEMP: Valleys:** 86-89° (8-10° cooler)    **MIN RH: Valleys:** 20-25% (15-20% higher)  
**Ridgetops:** 74-78° (8-10° cooler)    **Ridgetops:** 25-30% (15-20% higher)  
**CHC WTG RAIN: 0%**    **LAL: 2**    **HAINES: 5 (Moderate)**

**WINDS: (20 feet)**    **Valleys:** Downslope winds 2-4 mph in the morning. Upslope winds 4-7 mph developing after 1030.  
**Ridgetops:** East-southeast 5-8 mph in the morning transitioning to the southwest by noon at 9-13 mph increasing to 10-15 mph with gusts to 20 mph from the west-northwest through the afternoon.

**MIXING HEIGHT:** Rising to 8,500 feet by 1600.

**TRANSPORT WIND:** Southwest 15-20 mph in the morning. West 10-15 mph in the afternoon

**VISIBILITY:** 7-9 miles.    **INVERSION:** Inversion lifting around 1030.

**TONIGHT:**

**WEATHER:** Decreasing clouds.  
**MIN TEMP: Valleys:** 44-48° (5-8° cooler)    **MAX RH: Valleys:** 45-50% (10-15% higher)  
**Ridgetops:** 51-56° (4-7° cooler)    **Ridgetops:** 40-45% (15-20% higher)  
**CHC WTG RAIN: 0%**    **LAL: 1**

**WINDS: (20 FEET)**    **Valleys:** Downslope and down valley winds of 2-4 mph developing through the night.  
**Ridgetops:** Light north wind around 5 mph transitioning to the southeast by morning.

**TRANSPORT WIND:** Southwest around 5 mph.

**SUNDAY:**

**WEATHER:**  
**MAX TEMP: Valleys:** 88-92° (7-9° warmer)    **MIN RH: Valleys:** 15-20% (7-10% drier)  
**Ridgetops:** 77-81° (3-4° warmer)    **Ridgetops:** 15-20% (7-10% drier)  
**CHC WTG RAIN: 0%**    **LAL: 1**    **HAINES: 4 (Low)**

**WINDS: (20 feet)**    **Valleys:** Downslope winds 2-4 mph in the morning. Upslope winds 4-6 mph developing after 1100.  
**Ridgetops:** West around 10 mph with gusts to 15 mph.

**MIXING HEIGHT:** Rising to 6,500 feet by 1600.

**TRANSPORT WIND:** West around 10 mph.

**VISIBILITY:** 6-9 miles.    **INVERSION:** Inversion lifting around 1230.

**EXTENDED OUTLOOK: Monday through Thursday:** Dry conditions will persist Monday and Tuesday as high pressure builds back over the region but slightly cooler temperatures and humidity are expected along with relatively light westerly winds. An upper-level disturbance will move through the Pacific Northwest Wednesday and Thursday potentially bringing gusty winds to the area as well as a slight chance for showers.



Nearby Weather Observations →

# FIRE BEHAVIOR FORECAST

FORECAST NUMBER: 7	TYPE OF FIRE: WILDFIRE
FIRE NAME: Crockets Knob	OPERATIONAL PERIOD: Day Shift Sept 3, 2022
DATE ISSUED: Sept 2, 2022	TIME ISSUED: 2000 HOURS
UNIT: OR-MAF	Don Strand NW IMT12 FBAN

## INPUTS

**WEATHER SUMMARY:** See attached weather forecast. Max temps – near upper 80's min RH near mid 20's. Winds – upslope 4-7 MPH with afternoon ridge top winds West 10-15 MPH with gusts 20 MPH..... Haines Index 5 (moderate). Very slight chance of thunderstorms in the area with potential outflow winds.

**FUELS:** Consists of brush, dense regeneration with a surface litter of large down wood. The fire area also contains snags and areas with remnant live trees which survived the 1996 fire.

Live fuel moistures in the Ceanothus are estimated to be near 100%. 1000-hour dead fuel moistures are in the 10% range. 10-hr and 100-hr fuel moistures are in the critically dry range.

Energy Release Component is near the 97<sup>th</sup> percentile.

## OUTPUTS

### FIRE BEHAVIOR

#### GENERAL: HEADS UP FIRE DAY

- Expect fire spread in down woody surface fuels with single and group torching, spotting down wind and leap frogging to new fuels. Sub alpine trees are present in the upper elevations and easily torch, producing numerous fire brands.
- Where fire gets in alignment with winds and or slope, short upslope runs in the brush, reproduction and timber stringers are possible. Potential for flare ups exists in areas of dirty burns.
- Spot fires initiate quickly, spread rapidly and are difficult to suppress.

POI: near 70%. Maximum spotting distance near 0.3 miles; with 20 MPH gusts, 0.5 miles

Head fire rates of spread in the surface fuels will be 5 to 10 feet/minute. On steeper slopes and with wind gusts, 25 to 35 ft/minute.

#### SPECIFIC:

DIV A: Expect occasional torching. Continue to watch for hold over spot fires.

DIV E: Expect fire spread in interior dirty burns and unlined areas. Fire will leap frog to available fuels.

DIV M: West and upslope winds have the potential to push fire through the brush and timbered islands, spotting across the sparse grass openings.

DIV Z: Expect flanking fire with occasional torching in timbered islands. Upslope winds may be enhanced by the west winds in the Boulder Creek Basin. So, a threat of fire moving through timbered islands exists.

**INITIAL ATTACK:** In the event resources respond to a new start, a Haines of 5 will contribute to greater fire intensity. Pay attention to wind/slope alignment. Potential for rapid rates of spread in light flashy fuels exist.

**AIR OPERATIONS:** Expect areas of smoke haze/drift in the area .

## SAFETY

As fire moves into new areas, pay attention to snags and fire weakened trees.

Spot fires can develop quickly and be difficult to suppress.

# Safety Message

3 September 2022

**INCIDENT: CROCKETS KNOB**

**OPERATIONAL PERIOD: 0600-1800**

## **TOPICS: SITUATIONAL AWARENESS**

Developing and maintaining situational awareness is a three-step process that includes:

1. Perception: Gathering information about what is happening around you.
2. Understanding: Making sense of the information you gather.
3. Prediction: Anticipating future events to prevent bad outcomes.

While situational awareness is the foundation for good decision-making, it is not flawless. Unexpected and novel events happen, even to the most experienced responders.

Wildland firefighting is often physically demanding work performed over extended periods of time. Lack of sleep, hydration, and smoke inhalation can lead to mental fatigue, which can impact situational awareness.

Not recognizing the hazards, being unfamiliar with local fuels, fuel conditions, or understanding the plan will lead to a lack of situational awareness. You don't know what you don't know.

Pay attention to your environment, ask for a good briefing, and make sure you understand the intent. Recognize hazards, communicate them and avoid or remove them.

Every day on a fire is a learning day.

*Luck runs out.*

SAFETY OFFICER: Troy Corn, Jack Cates



## Deliberate Risk Assessment-Hazard Summary

### 3 September 2022

Hazard	Mitigation	Post Risk
Extraction Time	Utilize shorthaul, agency and civilian medivac as treatment/timing dictates. Review ordering procedure for all aircraft. Establish redundant plans for evac if using aircraft. Identify medivac sites and helispots. Initiate ground transport to accident site for transport capability. Identify EMT/EMTP from resources assigned to division. Provide line qualified paramedics to each division as available. Review IWI protocol to ensure familiarity. Evaluate on-going need for repositioning medical personnel. Provide dust abatement on Helispots as needed.	HIGH
Aircraft	Utilize Air Attack. Ensure all resources are a safe distance from all bucket and retardant drops. Establish LCES. Utilize air to ground primary for fixed wing, air to ground 2 for bucket work as needed. Reference IRPG (Safe aircraft operations pg. 61-62). Ensure IA resources have coordination with unassigned local air resources to provide deconfliction.	HIGH
Hazard Trees	Use avoidance to limit exposure time. Fall ahead to avoid exposure. Use qualified fallers, blasting, or alternate methods if needed. Conduct on-going risk analysis of all work areas. Follow Hazard Tree Safety Guidelines (IRPG page 20-21).	HIGH
Heavy Equipment	Post lookouts around equipment work areas. Establish communications with equipment boss and operator. Do not work down slope from equipment. Follow agency guidelines for chipping operations.	HIGH
Physical Factors	Maintain hydration schedule. Closely monitor work rate and implement rest periods. Maintain nutrition. Ensure adequate work/rest.	MODERATE
Fire Behavior	<b>Maintain awareness of increased spotting distances with changes in fire weather.</b> Be aware of burn windows and weather impacts and min/max RH for flashy fuels/local conditions. Report changes to FBAN and IMET. Establish MAP for disengagement to provide for an orderly retreat given lack of safety zones. Have a plan for disengagement that establishes a designated meeting point and maintains personnel accountability.	MODERATE
Steep Terrain/Gravity	Do not work crews above or below each other. Post lookouts for rolling material. Watch footing in loose soil, rock and around vegetation. Do not work below heavy equipment. Scout and identify travel routes.	MODERATE
Unburned Fuels/Firing Ops	<b>Maintain awareness fuel dryness levels.</b> Establish LCES. Ensure management action points are implemented and followed. Weather updates as needed during burning operations. Locate indirect firelines to minimize unburned fuels. Follow Interagency Ignition Guide. Ensure communications between all firing operations. Establish road security at all firing sites. Follow approved firing plan for unburned fuels. If utilizing aerial ignitions, make sure firing plan is in place and communicated to all resources and understood. Utilize separate Air to Ground for operation as appropriate.	MODERATE
Transportation	<b>Be aware of increased traffic flow over Labor Day Weekend.</b> Sign all incident roads that provide access to divisions. Provide daily updated travel plan maps. Practice defensive driving. In local communities obey the posted speed limits in town and recognize the school zone around camp and the presence of children along streets and roadways. Use reader boards to provide advanced warning and control entry to base camp as needed. Identify and evaluate contingency and alternate escape and travel routes. Provide dust abatement and grading as needed. Provide advanced scouting for transport access and bridge weight restrictions.	MODERATE



## Deliberate Risk Assessment-Hazard Summary

### 3 September 2022

	Evaluate road conditions for access, egress, and travel routes to the north of the fire for drivability and safety.	
Initial Attack	Ensure identified IA resources are briefed of expectations and ensure communication plan is provided. Ensure resources are briefed on IA command structure. Provide identified crews with area maps.	MODERATE
ATV/UTV	Follow agency specific rules and regulations for proper PPE. Make sure operators are properly licensed and trained. Operate machine to the current and expected conditions. Do not overload machine.	MODERATE
Environmental Factors	Assign medical personnel to camp. Assess for known allergies and report to medical personnel. Obtain Bee Bopper/wasp spray and yellow jacket traps. Maintain an awareness of livestock, wildlife and rattlesnakes. Identify and report allergies to your chain of command. Work with READs and GISS to evaluate and identify mineshafts.	MODERATE
Communication	Evaluate for dead zones prior to engagement. Utilize human repeaters as needed. <b>Ensure coverage and accountability of resources in problem areas.</b> Spiking resources must be in cell coverage. 24 staffing at JDICC will serve as a backup. Spike locations relayed to Ops daily.	LOW
Public Interaction	<b>Ensure changes to closures and evacuation levels are fully communicated to incident personnel and the public.</b> Implement area and road closures as necessary. Maintain a lookout for hunters in and out of closure areas. Maintain awareness of evacuation areas and provide accurate information dissemination.	LOW
Viral Transmission Mitigations, Communicable Disease	Maintain awareness of health, perform self-checks, maintain social distancing, wear face coverings in accordance with CDC recommendations. Report and isolate if not feeling well. Establish liaison with Grant County Public Health.	LOW

**Division/Group Assignment List (ICS 204 WF)**  
**Controlled Unclassified Information//Basic**

<b>1. Incident Name:</b>			<b>3.</b>			
CROCKETS KNOB			<b>Branch:</b>		<b>Division/Group</b>	
<b>2. Operational Period:</b> DAY			A			
Date/Time From: 09/03/2022 0600 SAT		Date/Time To: 09/03/2022 1800 SAT				
<b>4. Operations Personnel</b>						
<b>OPERATIONS CHIEF</b>		AARON ROWE; JEROMY WILSON (T) KURT RANTA; CODY ACORD (T)		<b>DIVISION/GROUP SUPERVISOR</b>		BOB HINDS IAN MCCORD (T)
<b>SAFETY OFFICER</b>		TROY CORN; JACK CATES ERIC MILLER (T)		<b>AIR OPERATIONS BRANCH DIRECTOR</b>		PAUL BALFOUR
<b>5. Resources Assigned this Period</b>						
Strike Team / Task Force / Resource Designator	LWD	Leader	Number Persons	Drop Off PT./Time	Pick Up PT./Time	
O-99 SOFR	09/12	JEROME DRAZINSKI	1	BASE CAMP/0600	BASE CAMP/1800	
O-21 TFLD	09/05	MICHAEL CEARNS	1	BASE CAMP/0600	BASE CAMP/1800	
O-83 TFLD	09/10	ERIC METZGER	1	BASE CAMP/0600	BASE CAMP/1800	
O-144 FOBS	09/15	DAVID REYNOLDS	1	BASE CAMP/0600	BASE CAMP/1800	
O-145 FOBS (T)	09/15	BRADLEY WALKER	1	BASE CAMP/0600	BASE CAMP/1800	
O-1 FMOD	09/05	JERRY PETTYJOHN	2	BASE CAMP/0600	BASE CAMP/1800	
C-15 CRW1 PRESCOTT IHC	09/12	DARIN FISHER	23	BASE CAMP/0600	BASE CAMP/1800	
C-5 CR2I GRAYBACK FORESTRY NCC 13B	09/15	DAVID BLANCO	18	BASE CAMP/0600	BASE CAMP/1800	
C-17 CR2I SRV #10	09/07	MAGDALENO GUARDADO	22	BASE CAMP/0600	BASE CAMP/1800	
C-24 CRW2 WEST COAST REFOREST CR07	09/15	BENJAMIN MARTINEZ	20	BASE CAMP/0600	BASE CAMP/1800	
E-4 ENG6 GRAYBACK FORESTRY	09/04	ERNIE SMITH	3	BASE CAMP/0600	BASE CAMP/1800	
E-18 ENG4 AAA THUNDERBOLT	09/05	LOGAN CATES	3	BASE CAMP/0600	BASE CAMP/1800	
E-35 ENG6 STRIKE BACK LLC	09/08	JOE PICKET	2	BASE CAMP/0600	BASE CAMP/1800	
E-37 ENG4 AAA THUNDERBOLT FIRE SVC	09/08	ROBERT STEWART	3	BASE CAMP/0600	BASE CAMP/1800	
E-39 ENG BIGFOOT	09/09	TRAVIS ALBRECHT	3	BASE CAMP/0600	BASE CAMP/1800	
E-60 WTS2 ALL WET TRUCKING	09/10	JACOB HOOVER	1	BASE CAMP/0600	BASE CAMP/1800	
<b>8. Division/Group Communication Summary</b>						
Function	Channel	RX Frequency N/W	RX Tone/NAC	TX Frequency N/W	TX Tone/NAC	Mode
COMMAND	1	170.4250	131.8	168.0750	131.8	A
COMMAND	2	170.4125	131.8	165.9625	131.8	A
TACTICAL	4	168.0500	131.8	168.0500	131.8	A
AIR TO GROUND	13	167.0750		167.0750		A
<b>9. Prepared By (Resource Unit Leader)</b>			<b>Approved By (Planning Section Chief)</b>		<b>Date</b>	<b>Time</b>
JILL JOHNSON			MARGE HUTCHINSON		09/02/2022	2000

**Division/Group Assignment List (ICS 204 WF)**  
**Controlled Unclassified Information//Basic**

<b>1. Incident Name:</b>				<b>3.</b>		
CROCKETS KNOB				<b>Branch:</b>	<b>Division/Group</b>  A	
<b>2. Operational Period: DAY</b>						
Date/Time From: 09/03/2022 0600 SAT		Date/Time To: 09/03/2022 1800 SAT				
<b>4. Operations Personnel</b>						
<b>OPERATIONS CHIEF</b>		AARON ROWE; JEROMY WILSON (T) KURT RANTA; CODY ACORD (T)		<b>DIVISION/GROUP SUPERVISOR</b>		BOB HINDS IAN MCCORD (T)
<b>SAFETY OFFICER</b>		TROY CORN; JACK CATES ERIC MILLER (T)		<b>AIR OPERATIONS BRANCH DIRECTOR</b>		PAUL BALFOUR
<b>5. Resources Assigned this Period</b>						
Strike Team / Task Force / Resource Designator		LWD	Leader	Number Persons	Drop Off PT./Time	Pick Up PT./Time
E-61 WTS2 ALL WET TRUCKING		09/10	WILLIAM HOOVER	1	BASE CAMP/0600	BASE CAMP/1800
E-93 WTS2 STORM CARPENTER		09/12	STACY COATES	1	BASE CAMP/0600	BASE CAMP/1800
E-12 UTV KD OUTDOORS			UNSTAFFED		BASE CAMP/0600	BASE CAMP/1800
E-27 AMB1 CASCADE MED TRANSPORT		09/06	BRADLEY HOLT	2	BASE CAMP/0600	BASE CAMP/1800
O-93 EMPF MEDIC 2 FRONTLINE EMS		09/10	ASHLEY CARTER	1	BASE CAMP/0600	BASE CAMP/1800
O-96 EMPF MEDIC 4 FIRELINE MEDICS		09/11	MATT FREEBORN	1	BASE CAMP/0600	BASE CAMP/1800
<b>6. Control Operations/Work Assignments:</b>						
<p>TASK: Hold fire east of the dozer line in Myrtle Creek, burning out pockets as needed. Prepare to fire the 45 Road. Continue mop-up and patrol Road 4550. Prep towards 4560.</p> <p>PURPOSE: Prevent fire growth that impacts private property, cultural and natural resources, and remaining timber stands within Summit Fire scar.</p> <p>END STATE: Fire is contained east of Road 45 and north of Road 4550.</p>						
<b>7. Special Instructions:</b>						
Engines and tenders may NOT draft directly from natural water sources, such as creeks. Drafting will occur only from Fold-a-tanks.						
<b>8. Division/Group Communication Summary</b>						
Function	Channel	RX Frequency N/W	RX Tone/NAC	TX Frequency N/W	TX Tone/NAC	Mode
COMMAND	1	170.4250	131.8	168.0750	131.8	A
COMMAND	2	170.4125	131.8	165.9625	131.8	A
TACTICAL	4	168.0500	131.8	168.0500	131.8	A
AIR TO GROUND	13	167.0750		167.0750		A
<b>9. Prepared By (Resource Unit Leader)</b>			<b>Approved By (Planning Section Chief)</b>		<b>Date</b>	<b>Time</b>
JILL JOHNSON			MARGE HUTCHINSON		09/02/2022	2000

**Division/Group Assignment List (ICS 204 WF)**  
**Controlled Unclassified Information//Basic**

<b>1. Incident Name:</b>			<b>3.</b>			
CROCKETS KNOB			<b>Branch:</b>		<b>Division/Group</b>	
<b>2. Operational Period:</b> DAY					E	
Date/Time From: 09/03/2022 0600 SAT		Date/Time To: 09/03/2022 1800 SAT				
<b>4. Operations Personnel</b>						
<b>OPERATIONS CHIEF</b>		AARON ROWE; JEROMY WILSON (T) KURT RANTA; CODY ACORD (T)		<b>DIVISION/GROUP SUPERVISOR</b>		RICK WOODALL ANDREW STINCHFIELD (T)
<b>SAFETY OFFICER</b>		TROY CORN; JACK CATES ERIC MILLER (T)		<b>AIR OPERATIONS BRANCH DIRECTOR</b>		PAUL BALFOUR
<b>5. Resources Assigned this Period</b>						
Strike Team / Task Force / Resource Designator		LWD	Leader	Number Persons	Drop Off PT./Time	Pick Up PT./Time
O-61.80 SOF2		09/10	PAUL BRNA	1	BASE CAMP/0600	BASE CAMP/1800
O-59 TFLD		09/10	JON STONELAKE	1	BASE CAMP/0600	BASE CAMP/1800
O-84 TFLD		09/11	SCOTT BENINATI	1	BASE CAMP/0600	BASE CAMP/1800
O-86 TFLD		09/12	NIC TURCO	1	BASE CAMP/0600	BASE CAMP/1800
O-14 HEQB		09/05	NICK SCHULZ	1	BASE CAMP/0600	BASE CAMP/1800
O-16 HEQB (T)		09/06	THOMAS FISHER	1	BASE CAMP/0600	BASE CAMP/1800
O-54 HEQB		09/12	JAMES MAYOR	1	BASE CAMP/0600	BASE CAMP/1800
O-80 HEQB		09/09	WHITNEY VANDEWIELE	1	BASE CAMP/0600	BASE CAMP/1800
O-3 FMOD WEBB		09/05	MARK WEBB	2	BASE CAMP/0600	BASE CAMP/1800
O-128 FMOD SWEDBERG CONTR		09/12	TIMOTHY WAGNER	2	BASE CAMP/0600	BASE CAMP/1800
C-7 CRW1 EL CARISO IHC		09/09	CHARLES KOTT	22	BASE CAMP/0600	BASE CAMP/1800
C-9 CRW2 IRON MOUNTAIN FF		09/10	VICTOR CISNEROS	20	BASE CAMP/0600	BASE CAMP/1800
C-10 CRW2 CSR ENTERPR CRS3		09/10	JUBENCIO SALDANG	20	BASE CAMP/0600	BASE CAMP/1800
C-16 CRW1 CRW1 - PIKE IHC			DAVID SMALLMAN	20	BASE CAMP/0600	BASE CAMP/1800
C-18 CR2I VALE BLM SRV #12		09/07	JAY JACOBO	20	BASE CAMP/0600	BASE CAMP/1800
C-25 CRW2 SZ FORESTRY FULLERTON CREW 1		09/15	RICHARD FULLERTON	20	BASE CAMP/0600	BASE CAMP/1800
<b>8. Division/Group Communication Summary</b>						
Function	Channel	RX Frequency N/W	RX Tone/NAC	TX Frequency N/W	TX Tone/NAC	Mode
COMMAND	1	170.4250	131.8	168.0750	131.8	A
COMMAND	2	170.4125	131.8	165.9625	131.8	A
TACTICAL	5	168.2000	131.8	168.2000	131.8	A
AIR TO GROUND	13	167.0750		167.0750		A
<b>9. Prepared By (Resource Unit Leader)</b>			<b>Approved By (Planning Section Chief)</b>		<b>Date</b>	<b>Time</b>
JILL JOHNSON			MARGE HUTCHINSON		09/02/2022	2000

**Division/Group Assignment List (ICS 204 WF)**  
**Controlled Unclassified Information//Basic**

<b>1. Incident Name:</b>				<b>3.</b>		
CROCKETS KNOB				<b>Branch:</b>	<b>Division/Group</b>  E	
<b>2. Operational Period: DAY</b>						
Date/Time From: 09/03/2022 0600 SAT		Date/Time To: 09/03/2022 1800 SAT				
<b>4. Operations Personnel</b>						
<b>OPERATIONS CHIEF</b>		AARON ROWE; JEROMY WILSON (T) KURT RANTA; CODY ACORD (T)		<b>DIVISION/GROUP SUPERVISOR</b>		RICK WOODALL ANDREW STINCHFIELD (T)
<b>SAFETY OFFICER</b>		TROY CORN; JACK CATES ERIC MILLER (T)		<b>AIR OPERATIONS BRANCH DIRECTOR</b>		PAUL BALFOUR
<b>5. Resources Assigned this Period</b>						
Strike Team / Task Force / Resource Designator		LWD	Leader	Number Persons	Drop Off PT./Time	Pick Up PT./Time
E-3 ENG6 GRAYBACK FORESTRY		09/04	CHRIS KENNEDY	3	BASE CAMP/0600	BASE CAMP/1800
E-77 ENG6 OREGON WOODS		09/11	RAVEN PARKINS	3	BASE CAMP/0600	BASE CAMP/1800
E-79 ENG6 HI COUNTRY LLC E1021		09/11	JOHN CONGER	3	BASE CAMP/0600	BASE CAMP/1800
E-80 ENG6 A1 FIRESTORM E5		09/11	DONALD LAFFERTY	3	BASE CAMP/0600	BASE CAMP/1800
E-81 ENG6 TIMBER BASIN CONTR		09/11	SCOTT FARMER	3	BASE CAMP/0600	BASE CAMP/1800
E-5 WTS2 45 CONTRACTING LLC		09/04	MIKE NAULT	1	BASE CAMP/0600	BASE CAMP/1800
E-95 WTS2 VEGETATION SOLUTIONS		09/12	JOHN MCKENZIE	1	BASE CAMP/0600	BASE CAMP/1800
E-113 WTS2 KING INC		09/15	DAVID SHEFFEL	1	BASE CAMP/0600	BASE CAMP/1800
E-114 WTS2 SAULS MOBILE WASH		09/13	WAYNE SAUL	1	BASE CAMP/0600	BASE CAMP/1800
E-17 DZR2 J & D LOGGING & CONTR		09/05	JOHN SANOWSKI	2	BASE CAMP/0600	BASE CAMP/1800
E-98 DZR2 CARTER		09/13	PATTON CARTER	2	BASE CAMP/0600	BASE CAMP/1800
E-29 MBM2 MORRIS FORESTRY		09/06	DOU GHARITY	2	BASE CAMP/0600	BASE CAMP/1800
E-33 MBM1 BRUCE YOUNG LOGGING		09/09	MATT MCLAREN	2	BASE CAMP/0600	BASE CAMP/1800
E-115 MBM1 BOULDER RIDGE CONSTR		09/14	GARRY ALLEN	2	BASE CAMP/0600	BASE CAMP/1800
E-99 MAST JLC CONTRACTING		09/13	BRIAN STAHANCYK	2	BASE CAMP/0600	BASE CAMP/1800
E-62 FEL1 J & D LOGGING & CONTR		09/10	LJ SADOWSKI	2	BASE CAMP/0600	BASE CAMP/1800
E-10 CHP2 ROGUE RIVE FIRE & WATER		09/08	AUSTIN HUTTEMA	3	BASE CAMP/0600	BASE CAMP/1800
<b>8. Division/Group Communication Summary</b>						
Function	Channel	RX Frequency N/W	RX Tone/NAC	TX Frequency N/W	TX Tone/NAC	Mode
COMMAND	1	170.4250	131.8	168.0750	131.8	A
COMMAND	2	170.4125	131.8	165.9625	131.8	A
TACTICAL	5	168.2000	131.8	168.2000	131.8	A
AIR TO GROUND	13	167.0750		167.0750		A
<b>9. Prepared By (Resource Unit Leader)</b>			<b>Approved By (Planning Section Chief)</b>		<b>Date</b>	<b>Time</b>
JILL JOHNSON			MARGE HUTCHINSON		09/02/2022	2000

**Division/Group Assignment List (ICS 204 WF)**  
**Controlled Unclassified Information//Basic**

<b>1. Incident Name:</b>			<b>3.</b>			
CROCKETS KNOB			<b>Branch:</b>		<b>Division/Group</b>	
<b>2. Operational Period:</b> DAY					E	
Date/Time From: 09/03/2022 0600 SAT		Date/Time To: 09/03/2022 1800 SAT				
<b>4. Operations Personnel</b>						
<b>OPERATIONS CHIEF</b>		AARON ROWE; JEROMY WILSON (T) KURT RANTA; CODY ACORD (T)		<b>DIVISION/GROUP SUPERVISOR</b>		RICK WOODALL ANDREW STINCHFIELD (T)
<b>SAFETY OFFICER</b>		TROY CORN; JACK CATES ERIC MILLER (T)		<b>AIR OPERATIONS BRANCH DIRECTOR</b>		PAUL BALFOUR
<b>5. Resources Assigned this Period</b>						
Strike Team / Task Force / Resource Designator		LWD	Leader	Number Persons	Drop Off PT./Time	Pick Up PT./Time
E-11 UTV KD OUTDOORS			UNSTAFFED		BASE CAMP/0600	BASE CAMP/1800
E-109 UTV E OREGON RENTALS			UNSTAFFED		BASE CAMP/0600	BASE CAMP/1800
O-122 REAF		09/13	SUSAN THEIS	1	BASE CAMP/0600	BASE CAMP/1800
O-165 REAF (T)		09/15	ERIN BURKE	1	BASE CAMP/0600	BASE CAMP/1800
READ		09/16	MORGAN ISSACS	1	BASE CAMP/0600	BASE CAMP/1800
O-7 EMT		09/06	DANIEL SOLOMON	1	BASE CAMP/0600	BASE CAMP/1800
O-94 EMPF MEDIC 1 ADVENTURE MEDICS		09/10	CHRISTIAN MILLER	1	BASE CAMP/0600	BASE CAMP/1800
E-87 REMS BLACKWOODS EMERG SVC		09/12	NICK BRUCKNER	4	BASE CAMP/0600	BASE CAMP/1800
<b>6. Control Operations/Work Assignments:</b>						
TASK: Hold burn-out on 45 Road and identify and secure new spots. Scout spot fires northwest and identify containment options. PURPOSE: Prevent fire growth that impacts cultural and natural resources, remaining timber stands within the Summit Fire scar, and the Indian Rock Lookout. END STATE: Fire is contained east of 45 Road.						
<b>7. Special Instructions:</b>						
Engines and tenders may NOT draft directly from natural water sources, such as creeks. Drafting will occur only from Fold-a-tanks.						
<b>8. Division/Group Communication Summary</b>						
Function	Channel	RX Frequency N/W	RX Tone/NAC	TX Frequency N/W	TX Tone/NAC	Mode
COMMAND	1	170.4250	131.8	168.0750	131.8	A
COMMAND	2	170.4125	131.8	165.9625	131.8	A
TACTICAL	5	168.2000	131.8	168.2000	131.8	A
AIR TO GROUND	13	167.0750		167.0750		A
<b>9. Prepared By (Resource Unit Leader)</b>			<b>Approved By (Planning Section Chief)</b>		<b>Date</b>	<b>Time</b>
JILL JOHNSON			MARGE HUTCHINSON		09/02/2022	2000

**Division/Group Assignment List (ICS 204 WF)**  
**Controlled Unclassified Information//Basic**

<b>1. Incident Name:</b>				<b>3.</b>		
CROCKETS KNOB				<b>Branch:</b>	<b>Division/Group</b>  M	
<b>2. Operational Period: DAY</b>						
Date/Time From: 09/03/2022 0600 SAT		Date/Time To: 09/03/2022 1800 SAT				
<b>4. Operations Personnel</b>						
<b>OPERATIONS CHIEF</b>		AARON ROWE; JEROMY WILSON (T) KURT RANTA; CODY ACORD (T)		<b>DIVISION/GROUP SUPERVISOR</b>		BRAD BRYANT
<b>SAFETY OFFICER</b>		TROY CORN; JACK CATES ERIC MILLER (T)		<b>AIR OPERATIONS BRANCH DIRECTOR</b>		PAUL BALFOUR
<b>5. Resources Assigned this Period</b>						
Strike Team / Task Force / Resource Designator		LWD	Leader	Number Persons	Drop Off PT./Time	Pick Up PT./Time
O-61.83 SOF2		09/13	TAIJA CORSO	1	BASE CAMP/0600	BASE CAMP/1800
O-155 SMKJ		09/15	TIM SCOTT	1	BASE CAMP/0600	BASE CAMP/1800
O-156 SMKJ		09/15	JAMES GOELLER	1	BASE CAMP/0600	BASE CAMP/1800
O-157 SMKJ (CREW BOSS)		09/15	MATT JONES	1	BASE CAMP/0600	BASE CAMP/1800
O-158 SMKJ		09/15	TYLER TOMLINSON	1	BASE CAMP/0600	BASE CAMP/1800
C-4 CR2I GRAYBACK FORESTRY 13A		09/15	CHARLES COFMAN	20	BASE CAMP/0600	BASE CAMP/1800
E-14 UTV			UNSTAFFED		BASE CAMP/0600	BASE CAMP/1800
<b>6. Control Operations/Work Assignments:</b>						
<p>TASK: Monitor fire growth beneath Indian Rock and Princess Trail to the junction of the Big Boulder trail. Scout spots east of lookout for containment options. Wrap Indian Rock Lookout.</p> <p>PURPOSE: Provide time to ensure appropriate action can be taken to prevent impacts to cultural and natural resources, remaining timber stands within the Summit Fire scar, and the Indian Rock Lookout.</p> <p>END STATE: Fire is contained southwest of main ridge using natural barriers and Princess Trail. Minimize growth of spot fires over main ridge.</p>						
<b>7. Special Instructions:</b>						
Notify Operations of fire growth across the Princess Trail.						
<b>8. Division/Group Communication Summary</b>						
Function	Channel	RX Frequency N/W	RX Tone/NAC	TX Frequency N/W	TX Tone/NAC	Mode
COMMAND	1	170.4250	131.8	168.0750	131.8	A
COMMAND	2	170.4125	131.8	165.9625	131.8	A
TACTICAL	6	168.6000	131.8	168.6000	131.8	A
AIR TO GROUND	13	167.0750		167.0750		A
<b>9. Prepared By (Resource Unit Leader)</b>			<b>Approved By (Planning Section Chief)</b>		<b>Date</b>	<b>Time</b>
JILL JOHNSON			MARGE HUTCHINSON		09/02/2022	2000



**Division/Group Assignment List (ICS 204 WF)**  
**Controlled Unclassified Information//Basic**

<b>1. Incident Name:</b>				<b>3.</b>		
CROCKETS KNOB				<b>Branch:</b>	<b>Division/Group</b>  S	
<b>2. Operational Period: DAY</b>						
Date/Time From: 09/03/2022 0600 SAT		Date/Time To: 09/03/2022 1800 SAT				
<b>4. Operations Personnel</b>						
<b>OPERATIONS CHIEF</b>		AARON ROWE; JEROMY WILSON (T) KURT RANTA; CODY ACORD (T)		<b>DIVISION/GROUP SUPERVISOR</b>		FIDEL VERDUZCO
<b>SAFETY OFFICER</b>		TROY CORN; JACK CATES ERIC MILLER (T)		<b>AIR OPERATIONS BRANCH DIRECTOR</b>		PAUL BALFOUR
<b>5. Resources Assigned this Period</b>						
Strike Team / Task Force / Resource Designator		LWD	Leader	Number Persons	Drop Off PT./Time	Pick Up PT./Time
O-61.82 SOF2		09/10	DON WALLER	1	BASE CAMP/0600	BASE CAMP/1800
O-55 TFLD		09/11	EZRA BUTTERFIELD	1	BASE CAMP/0600	BASE CAMP/1800
O-130 TFLD (T)		09/11	TIMOTHY WAGNER	1	BASE CAMP/0600	BASE CAMP/1800
O-15 HEQB **		09/05	AARON KIENZLE	1	BASE CAMP/0600	BASE CAMP/1800
O-20 HEQB (T) **		09/06	DUANE STOKES	1	BASE CAMP/0600	BASE CAMP/1800
C-19 CRW2 WILLAMETTE VLY REFOREST CR 3		09/12	LAZARO MONTANO	20	BASE CAMP/0600	BASE CAMP/1800
C-20 CRW2 TORRES CONTR CR6		09/11	MARCA MARTINEZ	20	BASE CAMP/0600	BASE CAMP/1800
E-78 ENG6 AQUAFORCE E204		09/11	TYLER GILMORE	3	BASE CAMP/0600	BASE CAMP/1800
E-91 WTT2 TRI-CO **		09/13	CHET HETTINGAL	1	BASE CAMP/0600	BASE CAMP/1800
E-92 WTT2 JWS WILDFIRE		09/12	JOHN MCNEELY	1	BASE CAMP/0600	BASE CAMP/1800
E-94 WTT2 GRAYBACK FORESTRY		09/12	CLIFFORD	1	BASE CAMP/0600	BASE CAMP/1800
E-7 DZR2 COUGAR RIDGE CONSTR **		09/05	DAVE OAKS	2	BASE CAMP/0600	BASE CAMP/1800
E-34 MBM1 EAGLE CAP FORESTRY		09/10	BEN FISCHER	2	BASE CAMP/0600	BASE CAMP/1800
E-64 GRD1 J & D LOGGING & CONTR		09/11	DYLAN BRANDSMA	2	BASE CAMP/0600	BASE CAMP/1800
E-30 CHP2 GRAYBACK FORESTRY		09/08	JOSH MINER	3	BASE CAMP/0600	BASE CAMP/1800
E-96 CHP1 THE ROAD HOME		09/12	SAM BONADOR	3	BASE CAMP/0600	BASE CAMP/1800
E-97 CHP1 WYEAST FORESTRY MGMT		09/12	ERIC NELSON	3	BASE CAMP/0600	BASE CAMP/1800
<b>8. Division/Group Communication Summary</b>						
Function	Channel	RX Frequency N/W	RX Tone/NAC	TX Frequency N/W	TX Tone/NAC	Mode
COMMAND	1	170.4250	131.8	168.0750	131.8	A
COMMAND	2	170.4125	131.8	165.9625	131.8	A
TACTICAL	7	166.7250	131.8	166.7250	131.8	A
AIR TO GROUND	13	167.0750		167.0750		A
<b>9. Prepared By (Resource Unit Leader)</b>			<b>Approved By (Planning Section Chief)</b>		<b>Date</b>	<b>Time</b>
JILL JOHNSON			MARGE HUTCHINSON		09/02/2022	2000

**Division/Group Assignment List (ICS 204 WF)**  
**Controlled Unclassified Information//Basic**

<b>1. Incident Name:</b>			<b>3.</b>			
CROCKETS KNOB			<b>Branch:</b>		<b>Division/Group</b>	
<b>2. Operational Period:</b> DAY			S			
Date/Time From: 09/03/2022 0600 SAT		Date/Time To: 09/03/2022 1800 SAT				
<b>4. Operations Personnel</b>						
<b>OPERATIONS CHIEF</b>		AARON ROWE; JEROMY WILSON (T) KURT RANTA; CODY ACORD (T)		<b>DIVISION/GROUP SUPERVISOR</b>		FIDEL VERDUZCO
<b>SAFETY OFFICER</b>		TROY CORN; JACK CATES ERIC MILLER (T)		<b>AIR OPERATIONS BRANCH DIRECTOR</b>		PAUL BALFOUR
<b>5. Resources Assigned this Period</b>						
Strike Team / Task Force / Resource Designator		LWD	Leader	Number Persons	Drop Off PT./Time	Pick Up PT./Time
E-13 UTV KD OUTDOORS			UNSTAFFED		BASE CAMP/0600	BASE CAMP/1800
E-119 UTV E OREGON RENTALS			UNSTAFFED		BASE CAMP/0600	BASE CAMP/1800
O-95 EMPF MEDIC 3 ADVENTURE MEDICS		09/12	MICHAEL COOPER	1	BASE CAMP/0600	BASE CAMP/1800
<b>6. Control Operations/Work Assignments:</b>						
<p>TASK: Continue prepping the 4555 Road and Sunrise Butte Trail. Move machinery to begin prep in other contingency lines.  PURPOSE: Prevent Fire growth to the East/Southeast that impacts private property, cultural, natural, and timber values.  END STATE: Fire is contained west of 4555 Road and the Sunrise Butte trail.</p>						
<b>7. Special Instructions:</b>						
Engines and tenders may NOT draft directly from natural water sources, such as creeks. Drafting will occur only from fold-a-tanks.						
<ul style="list-style-type: none"> <li>If Initial Attack occurs within the TFR, John Day Dispatch will coordinate with appropriate duty officer and contact Field Ops for response.</li> <li>Field Operations will contact IA Group Supervisor and or Air Operations to coordinate response to new start.</li> <li>Local forest Initial Attack frequencies will be used and provided in the IAP Communications Plan</li> <li>The same process will be used for fires outside of TFR if assistance from Crockets Knob fire resources is requested.</li> </ul>						
<b>8. Division/Group Communication Summary</b>						
Function	Channel	RX Frequency N/W	RX Tone/NAC	TX Frequency N/W	TX Tone/NAC	Mode
COMMAND	1	170.4250	131.8	168.0750	131.8	A
COMMAND	2	170.4125	131.8	165.9625	131.8	A
TACTICAL	7	166.7250	131.8	166.7250	131.8	A
AIR TO GROUND	13	167.0750		167.0750		A
<b>9. Prepared By (Resource Unit Leader)</b>			<b>Approved By (Planning Section Chief)</b>		<b>Date</b>	<b>Time</b>
JILL JOHNSON			MARGE HUTCHINSON		09/02/2022	2000

**Division/Group Assignment List (ICS 204 WF)**  
**Controlled Unclassified Information//Basic**

<b>1. Incident Name:</b>				<b>3.</b>		
CROCKETS KNOB				<b>Branch:</b>	<b>Division/Group</b>  Z	
<b>2. Operational Period: DAY</b>						
Date/Time From: 09/03/2022 0600 SAT		Date/Time To: 09/03/2022 1800 SAT				
<b>4. Operations Personnel</b>						
<b>OPERATIONS CHIEF</b>		AARON ROWE; JEROMY WILSON (T) KURT RANTA; CODY ACORD (T)		<b>DIVISION/GROUP SUPERVISOR</b>		LARRY LEACH
<b>SAFETY OFFICER</b>		TROY CORN; JACK CATES ERIC MILLER (T)		<b>AIR OPERATIONS BRANCH DIRECTOR</b>		PAUL BALFOUR
<b>5. Resources Assigned this Period</b>						
Strike Team / Task Force / Resource Designator	LWD	Leader	Number Persons	Drop Off PT./Time	Pick Up PT./Time	
O-98 SOFR	09/12	CHRIS O'BRIEN	1	BASE CAMP/0600	BASE CAMP/1800	
O-11 TFLD	09/09	JOSHUA WINKLER	1	BASE CAMP/0600	BASE CAMP/1800	
O-143 FOBS	09/15	JAKE QUINTANA	1	BASE CAMP/0600	BASE CAMP/1800	
C-8 CRW1 INYO IHC	09/08	JOEL SHILLING	21	BASE CAMP/0600	BASE CAMP/1800	
C-6 CR2I OR-MAF #401 **	09/07	GARY WHATLEY	25	BASE CAMP/0600	BASE CAMP/1800	
E-2 ENG4 GRAYBACK FORESTRY	09/04	JOHN RAY	3	BASE CAMP/0600	BASE CAMP/1800	
E-36 ENG6 AAA THUNDERBOLT FIRE SVC	09/08	TOBY YAZZIE	3	BASE CAMP/0600	BASE CAMP/1800	
E-38 ENG4 AAA THUNDERBOLT FIRE SVC	09/08	JOHN GRANT	3	BASE CAMP/0600	BASE CAMP/1800	
E-6 WTS2 STORM CARPENTER	09/04	CUB CARPENTER	2	BASE CAMP/0600	BASE CAMP/1800	
E-45 WTS2 OSBURN	09/13	ALAN EWING	1	BASE CAMP/0600	BASE CAMP/1800	
E-46 WTS2 OVERPECK LOGGING	09/10	JOE MCCORMICK	1	BASE CAMP/0600	BASE CAMP/1800	
E-66 WTS2 1-A CONTRUCTION	09/10	SHAWN STEWART	1	BASE CAMP/0600	BASE CAMP/1800	
REGIONAL SAW COORDINATOR		AARON PEDERSEN	1	BASE CAMP/0600	BASE CAMP/1800	
REGIONAL SAW COORDINATOR		MARC CORMIER	1	BASE CAMP/0600	BASE CAMP/1800	
<b>8. Division/Group Communication Summary</b>						
Function	Channel	RX Frequency N/W	RX Tone/NAC	TX Frequency N/W	TX Tone/NAC	Mode
COMMAND	1	170.4250	131.8	168.0750	131.8	A
COMMAND	2	170.4125	131.8	165.9625	131.8	A
TACTICAL	8	166.7750	131.8	166.7750	131.8	A
AIR TO GROUND	13	167.0750		167.0750		A
<b>9. Prepared By (Resource Unit Leader)</b>			<b>Approved By (Planning Section Chief)</b>		<b>Date</b>	<b>Time</b>
JILL JOHNSON			MARGE HUTCHINSON		09/02/2022	2000

## Division/Group Assignment List (ICS 204 WF)

Controlled Unclassified Information//Basic

<b>1. Incident Name:</b>			<b>3.</b>			
CROCKETS KNOB			<b>Branch:</b>		<b>Division/Group</b>  Z	
<b>2. Operational Period:</b> <b>DAY</b>						
Date/Time From: 09/03/2022 0600                      SAT		Date/Time To: 09/03/2022 1800                      SAT				
<b>4. Operations Personnel</b>						
<b>OPERATIONS CHIEF</b>		AARON ROWE; JEROMY WILSON (T) KURT RANTA; CODY ACORD (T)		<b>DIVISION/GROUP SUPERVISOR</b>		LARRY LEACH
<b>SAFETY OFFICER</b>		TROY CORN; JACK CATES ERIC MILLER (T)		<b>AIR OPERATIONS BRANCH DIRECTOR</b>		PAUL BALFOUR
<b>5. Resources Assigned this Period</b>						
Strike Team / Task Force / Resource Designator		LWD	Leader	Number Persons	Drop Off PT./Time	Pick Up PT./Time
O-9 REMS SPFN 9		09/06	MATTHEW TURNER	4	BASE CAMP/0600	BASE CAMP/1800
E-51 AMBU 2		09/12	JERRY SINICA	2	BASE CAMP/0600	BASE CAMP/1800
<b>6. Control Operations/Work Assignments:</b>						
<p>TASK: Secure and mop-up dozer line and 436 Road. Continue securing direct line north towards H-265. Secure additional spots north of H-265.</p> <p>PURPOSE: Prevent additional fire spread into Badger Creek that may have future impact to private property, cultural, natural and timber values.</p> <p>END STATE: Fire is contained east of 4550 road and north of Badger Creek.</p>						
<b>7. Special Instructions:</b>						
Engines and tenders may NOT draft directly from natural water sources, such as creeks. Drafting will occur only from Fold-a-tanks.						
<ul style="list-style-type: none"> <li>· If Initial Attack occurs within the TFR, John Day Dispatch will coordinate with appropriate duty officer and contact Field Ops for response.</li> <li>· Field Operations will contact IA Group Supervisor and or Air Operations to coordinate response to new start.</li> <li>· Local forest Initial Attack frequencies will be used and provided in the IAP Communications Plan</li> <li>· The same process will be used for fires outside of TFR if assistance from Crockets Knob fire resources is requested.</li> </ul>						
<b>8. Division/Group Communication Summary</b>						
Function	Channel	RX Frequency N/W	RX Tone/NAC	TX Frequency N/W	TX Tone/NAC	Mode
COMMAND	1	170.4250	131.8	168.0750	131.8	A
COMMAND	2	170.4125	131.8	165.9625	131.8	A
TACTICAL	8	166.7750	131.8	166.7750	131.8	A
AIR TO GROUND	13	167.0750		167.0750		A
<b>9. Prepared By (Resource Unit Leader)</b>			<b>Approved By (Planning Section Chief)</b>		<b>Date</b>	<b>Time</b>
JILL JOHNSON			MARGE HUTCHINSON		09/02/2022	2000

**Division/Group Assignment List (ICS 204 WF)**  
**Controlled Unclassified Information//Basic**

<b>1. Incident Name:</b>			<b>3.</b>			
CROCKETS KNOB			<b>Branch:</b>		<b>Division/Group</b>	
<b>2. Operational Period:</b> DAY			<b>CONTINGENCY / STRUCTURE / IA</b>			
Date/Time From: 09/03/2022 0600 SAT		Date/Time To: 09/03/2022 1800 SAT				
<b>4. Operations Personnel</b>						
<b>OPERATIONS CHIEF</b>		AARON ROWE; JEROMY WILSON (T) KURT RANTA; CODY ACORD (T)		<b>DIVISION/GROUP SUPERVISOR</b>		JIM WALKOWSKI
<b>SAFETY OFFICER</b>		TROY CORN; JACK CATES ERIC MILLER (T)		<b>AIR OPERATIONS BRANCH DIRECTOR</b>		PAUL BALFOUR
<b>5. Resources Assigned this Period</b>						
Strike Team / Task Force / Resource Designator		LWD	Leader	Number Persons	Drop Off PT./Time	Pick Up PT./Time
ALASKA STRIKE TEAM					BASE CAMP /0600	BASE CAMP/1800
O-119 TFLD		09/08	BRITTANY STILLIE	1	BASE CAMP /0600	BASE CAMP/1800
E-86.1 TFLD (T)		09/08	ROBIN ACE	1	BASE CAMP /0600	BASE CAMP/1800
E-82 ENG6 AK-KKS K-62		09/08	DAN WHITE	3	BASE CAMP /0600	BASE CAMP/1800
E-83 ENG6 FAIRBANKS-65		09/08	MATT NUNNELLY	3	BASE CAMP /0600	BASE CAMP/1800
E-84 ENG6 FAIRBANKS-66		09/08	ROBERT WALLACE	3	BASE CAMP /0600	BASE CAMP/1800
E-85 ENG6 FAIRBANKS-67		09/08	LAURA LUND	3	BASE CAMP /0600	BASE CAMP/1800
E-86 ENG6 DOF M-68		09/08	JOE SHAW	3	BASE CAMP /0600	BASE CAMP/1800
E-112 ENG ODF E-9262		09/13	AARON KIDWELL	2	BASE CAMP /0600	BASE CAMP/1800
<b>6. Control Operations/Work Assignments:</b>						
<p>Contingency Group:  TASK: Scout for contingency lines beyond current containment lines.  PURPOSE: To establish secondary lines of defense that would prevent impact to values if current primary lines are compromised.  END STATE: Contingency lines identified and established if needed outside of primary containment lines.</p>						
<b>8. Division/Group Communication Summary</b>						
Function	Channel	RX Frequency N/W	RX Tone/NAC	TX Frequency N/W	TX Tone/NAC	Mode
COMMAND	1	170.4250	131.8	168.0750	131.8	A
COMMAND	2	170.4125	131.8	165.9625	131.8	A
TACTICAL	9	168.2500	131.8	168.2500	131.8	A
TACTICAL	11	168.3125	131.8	168.3125	131.8	A
AIR TO GROUND	12	167.3750		167.3750		A
AIR TO GROUND	13	167.0750		167.0750		A
<b>9. Prepared By (Resource Unit Leader)</b>			<b>Approved By (Planning Section Chief)</b>		<b>Date</b>	<b>Time</b>
JILL JOHNSON			MARGE HUTCHINSON		09/02/2022	2000

**Division/Group Assignment List (ICS 204 WF)**  
**Controlled Unclassified Information//Basic**

<b>1. Incident Name:</b>			<b>3.</b>			
CROCKETS KNOB			<b>Branch:</b>	<b>Division/Group</b>		
<b>2. Operational Period: DAY</b>						
Date/Time From: 09/03/2022 0600 SAT		Date/Time To: 09/03/2022 1800 SAT		<b>CONTINGENCY / STRUCTURE / IA</b>		
<b>4. Operations Personnel</b>						
<b>OPERATIONS CHIEF</b>		AARON ROWE; JEROMY WILSON (T) KURT RANTA; CODY ACORD (T)		<b>DIVISION/GROUP SUPERVISOR</b>		JIM WALKOWSKI
<b>SAFETY OFFICER</b>		TROY CORN; JACK CATES ERIC MILLER (T)		<b>AIR OPERATIONS BRANCH DIRECTOR</b>		PAUL BALFOUR
<b>6. Control Operations/Work Assignments:</b>						
<p>Structure Group:          TASK: Assess structures and infrastructure that could be impacted by fire spread and develop structure defense plan. Identify structure needs and coordinate with OSFM liaison and ODF to determine structure defense resources available.          PURPOSE: To prepare structures and private property values along the Highway 20 corridor and in the vicinity of the fire for impact from fire.          END STATE: Structures and private property along the Highway 20 corridor and in the vicinity of the fire are assessed and defensible. Suppression activities to prevent fire impact to private property has occurred.</p> <p>IA Group:          TASK: Follow IA response plan to provide IA response with identified resources for new fire starts within TFR.          PURPOSE: To support initial attack response capability for the Malheur and Umatilla NFs.          END STATE: Prompt and efficient mobilization of identified IA resources to new fire starts.</p>						
<b>7. Special Instructions:</b>						
<ul style="list-style-type: none"> <li>• If Initial Attack occurs within the TFR, John Day Dispatch will coordinate with appropriate duty officer and contact Field Ops for response.</li> <li>• Field Operations will contact IA Group Supervisor and or Air Operations to coordinate response to new start.</li> <li>• Local forest Initial Attack frequencies will be used and provided in the IAP Communications Plan</li> <li>• The same process will be used for fires outside of TFR if assistance from Crockets Knob fire resources is requested.</li> </ul> <p>Engines and tenders may NOT draft directly from natural water sources, such as creeks. Drafting will occur only from Fold-a-tanks.</p>						
<b>8. Division/Group Communication Summary</b>						
Function	Channel	RX Frequency N/W	RX Tone/NAC	TX Frequency N/W	TX Tone/NAC	Mode
COMMAND	1	170.4250	131.8	168.0750	131.8	A
COMMAND	2	170.4125	131.8	165.9625	131.8	A
TACTICAL	9	168.2500	131.8	168.2500	131.8	A
TACTICAL	11	168.3125	131.8	168.3125	131.8	A
AIR TO GROUND	12	167.3750		167.3750		A
AIR TO GROUND	13	167.0750		167.0750		A
<b>9. Prepared By (Resource Unit Leader)</b>			<b>Approved By (Planning Section Chief)</b>		<b>Date</b>	<b>Time</b>
JILL JOHNSON			MARGE HUTCHINSON		09/02/2022	2000

**AIR OPERATIONS SUMMARY**

**PREPARED BY: Paul Balfour**

**PREPARED DATE/TIME: September 2, 1800hrs**

<b>INCIDENT NAME</b> Crockets Knob	<b>2. OPERATIONAL PERIOD:</b> Date: 9/3/2022      Helibase Start Time: 0800 End Time: 2000      Sunrise: 0619 Sunset: 2000 CTL (Times valid for John Day PDT)
---------------------------------------	---

<p><b>3. REMARKS (Safety Notes, Hazards, Air Operations Special Equipment, etc.):</b> General Aviation, See &amp; Avoid YOU will be working in a complex fire environment, ensure YOU understand the Fire Traffic Area (FTA) Protocols. (12nm initial call, 7nm contact must be made prior to entering FTA)</p> <p>Bucket work, Retardant drops: ensure area is clear of ground personnel before dropping; watch for wires; be aware of potential for turbulence at ridge tops, saddles, canyons, etc *** BE AWARE OF FATIGUE, TAKE LONGER BREAKS WHEN FLYING IN SMOKEY CONDITIONS. *** Report all TFR intrusions to Air Operations, Air Support or Helibase as soon as possible.</p>	<p><b>4. MEDEVAC A/C:</b> Order thru ATGS or JDIDC <b>EMS Rotor A/G:</b> <b>VMED29 155.3475 Tx/Rx,</b> <b>Tone 156.7 Tx/Rx</b> 38HX COMM: A/A Primary A/G Primary</p>	<p><b>5. TFR #2/8108 &amp; 2/8109</b> Surface to 11,000' MSL 7NM Radius</p>
---	---	---

6. PERSONNEL	LWD	Phone	7. FREQUENCIES			8. FIXED-WING	# Avail / Type/ Make-Model / FAA N# / Base(s)
			AIR/AIR Primary	AM	FM		
AOBD: Paul Balfour O-61.43		509-993-8739	AIR/AIR Secondary	123.6250 (A8)		Fixed Wing/Buckets	DIVS order thru ATGS if up, or Communications
ASGS: Tim Lyda O- 61.44      9/8		541-761-2676	AIR/GRD Primary	128.2250 (A39)	167.0750 (A11)	ATGS Aircraft	(A-2) N3NT AC690D Jeremy Cowie or Relief Rob Rosetti
HEBM: Tyler Davis (T) 9/7		360-220-5359	AIR/GRD Secondary		169.7125 (A41)		LATs Order through Air Attack/AOBD Or JDIDC
HEMG:			AIR/GRD IA Primary		167.3750		
ATGS: Jeremy Cowie		541-575-3736	AIR/GRD IA Secondary		168.6375		
ATGS:			UNICOM	122.800		NOTES:	Grant Co Regional Airport, Haley Walker 541-575-1151 or 530-567-5987
JDIDC:		541-575-3110	DECK	163.1000			email cost: <a href="mailto:jdairbase@gmail.com">jdairbase@gmail.com</a>

**9. HELICOPTERS**

FAA N#	TY	MAKE/MODEL	BASE	START	AVAIL	REMARKS	FAA N#	TY	MAKE/MODEL	BASE	START	AVAIL	REMARKS
519FF	3	A Star B3	John Day	0800	0830	A-13, Helitack ,Medivac Buckets	462WY	1	CH-46	John Day	0800	0830	A-7 Bucket
38HX	3	AS-350 A Star	Baker	0800	0830	A-63 Short Haul/Buckets	448JS	1	S-61	John Day	0800	0830	A-22 Bucket
17HX	2	Bell 205++	John Day	0800	0830	A-102 Buckets/Helitack Crew 10 personnel	625CK	1	S-61	John Day	0800	0830	Tanked A-62
							83BH	1	UH-60	John Day	0800	0830	Bucket A-29



# INCIDENT RADIO COMMUNICATIONS PLAN (ICS 205)

Controlled Unclassified Information//Basic

<b>1. Incident Name:</b>	<b>2. Date/Time Prepared:</b>	<b>3. Operational Period: DAY</b>	
CROCKETS KNOB	Date: 09/02/2022 Time: 2000	Date/Time From: 09/03/2022 0600 SAT	Date/Time To: 09/03/2022 1800 SAT

**4. Basic Radio Channel Use:**

Zone Group	Ch #	Function	Channel Name/Trunked Radio System Talkgroup	Assignment	RX Freq	RX Tone/NAC	TX Freq	TX Tone/NAC	Mode (A,D, or M)	Remarks
	1	COMMAND	CMD 1	ALL DIVS	170.4250	131.8	168.0750	131.8	A	NORTH - INDIAN ROCK LO
	2	COMMAND	CMD 2	ALL DIVS	170.4125	131.8	165.9625	131.8	A	SOUTH - DIXIE BUTTE LO
	4	TACTICAL	TAC 4	DIV A	168.0500	131.8	168.0500	131.8	A	
	5	TACTICAL	TAC 5	DIV E	168.2000	131.8	168.2000	131.8	A	
	6	TACTICAL	TAC 6	DIV M	168.6000	131.8	168.6000	131.8	A	
	7	TACTICAL	TAC 7	DIV S	166.7250	131.8	166.7250	131.8	A	
	8	TACTICAL	TAC 8	DIV Z	166.7750	131.8	166.7750	131.8	A	
	9	TACTICAL	TAC 9	CONTIG	168.2500	131.8	168.2500	131.8	A	CONTINGENT, IA, STRUCTURE
	10	COMMAND	N DIXIE	ALL DIVS	172.4000	131.8	166.2000	123.0	A	IA / BACKUP IF CMD NET INOP
	11	TACTICAL	MAF TAC	IA	168.3125	131.8	168.3125	131.8	A	IA ONLY
	12	AIR TO GROUND	A/G 38	MALHEUR	167.3750		167.3750		A	A/G FOR MALHEUR N.F.
	13	AIR TO GROUND	A/G PRI	ALL DIVS	167.0750		167.0750		A	AIR OPS ONLY
	14	AIR TO GROUND	A/G SEC	ALL DIVS	169.7125		169.7125		A	AIR OPS ONLY
	15	TACTICAL	VMED 29	ALL DIVS	155.3475	156.7	155.3475	156.7	A	MEDICAL EVAC ONLY - LIFEFLIGHT
	16	AIR GUARD	AIRGUARD	ALL DIVS	168.6250		168.6250	110.9	A	EMERGENCY AIR OPS ONLY

**5. Special Instructions:** COMMUNICATIONS (208) 891-8093

<b>6. Prepared By</b> (Communications Unit Leader)	Name: MISSY PARKER	Signature: <i>Missy Parker</i>
ICS 205	IAP Page	Date/Time: 09/02/2022 2000

Controlled Unclassified Information//Basic

FINAL

## Crocket's Knob—WATER DRAFTING

### WATER SOURCES—Versus—APPROVED WATER QUANTITIES



What are the Water Sources shown on our maps? They are where:

- Site topography allows for engine/pump/helicopter access
- Water availability is usually reliable
- **The intent of showing them on a map is for short term IA fire suppression use**
- On the map above, the blue “W” indicates a “Fire Pump Site” and white “W” indicates a “Dip Site”

How do the READ/Fs come up with Approved Water Quantities?

- Question 1: Is the water source verified critical habitat for a sensitive, threatened, protected, or endangered species? (i.e. salmon, steelhead, bull trout, and many others that may include amphibians or plants). If NO, there may be other considerations such as wildlife or range use, but generally there is more flexibility with the quantity of use.
- Question 2: Is the time of use during a critical time for that species? (i.e. Spawning or times of low flow)
- If YES to question 2, **we cannot use water in excess of 10% of the flow without going into emergency consultation with environmental services. Agency administrators will have to approve of this. It's not preferred.**
- If NO to question 2 (rare during fire season in this area), the READs and agency administrators have flexibilities with the quantities of use.
- Question 3: Is the use long or short term?
  - Will tenders be repeatedly using it?
  - Will it be continuously filling a fold-a-tank?
  - Is it for a limited number of Type 6 engine fills?
  - How frequently will it be used? Etc.Short term use can be considered site by site by the READs and Agency Administrators.

*\*On the Crocket's Knob fire, the REAFs have taken flow measurements on the Middle Fork John Day River to determine that no more than 2 volume pumps can be used at a time without exceeding the 10% limit (as of 8/31/2022).*

*The REAFs also measured flow on North Fork Desolation Creek. It is identified critical habitat for Steelhead and Bull trout. The flow measurement indicated that the stream could not support a Mark 3 pump without the absolute guarantee of not exceeding 10% of the flow quantity. South Fork Desolation Creek is even smaller so the same result was determined.*

# THREE DAY DEMOB LIST

Saturday 9-3-22

## NO SCHEDULED DEMOBS

Sunday 9-4-22

### Overhead

O-21            1900            (TFLD)            CEARNS, MICHAEL

Monday 9-5-22

### EQUIPMENT

E-2	0630	(ENG4)	GRAYBACK FORESTRY
E-3	0645	(ENG6)	GRAYBACK FORESTRY
E-4	0700	(ENG6)	GRAYBACK FORESTRY
E-5	0715	(WTT2)	45 CONTRACTING LLC
E-6	0730	(WTT2)	STORM CARPENTER

### OVERHEAD

O-14	1830	(HEQB)	SCHULZ, NICHOLAS
O-15	1845	(HEQB)	KIENZLE, AARON C
O-13	1915	(PIOF)	WOOD, COURTNEY
O-1	2000	(FMOD)	PETTYJOHN
O-3	2015	(FMOD)	WEBB

### Crocketts Knob Fire DEMOB Procedures

1. Complete CTRs and follow Finance IAP Message.
2. Return any checked-out equipment and/or radios.
3. Complete Ground Support inspection if applicable.
4. Contact DEMOB at 509-432-6143 to finalize process.  
DEMOB Email: 2022.crockettsknob.demob@firenet.gov

**NOTE: All air travelers need to contact DEMOB to make arrangements 72 hours prior to departure.**





# **Crockets Knob Fire Information 541-625-0892**



[2022.crocketsknob@firenet.gov](mailto:2022.crocketsknob@firenet.gov)

<https://www.facebook.com/CrocketsKnobFire>

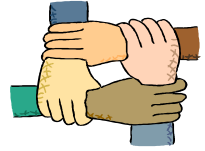
<https://inciweb.nwccg.gov/incident/8355/>

## **Talking Points**

- The Crockets Knob fire is being controlled using a Full Suppression Strategy with Public and Firefighter Safety and value protection as top priorities.
- Firefighters have been using mapping technology to accurately locate and identify structures, values, and hazards that may be impacted by the fire as well as landmarks that may be useful in fighting the fire.



# Human Resource Message



## Crocketts Knob Fire – September 3, 2022



### Tolerance:

**Working together as a team, displaying a positive attitude, and watching out for each other exemplifies leadership and professionalism. We expect all personnel to treat each other with dignity and respect and act in a professional manner on the fire and in the community.**

**Be mindful of the language that you use as offensive or derogatory remarks are inappropriate and are not acceptable in a workplace.**

**We all need to think about what we say before we speak. Let us all collectively work together to deescalate interpersonal conflict and not respond with emotion when we are frustrated.**



**Be patient, respectful and kind.**

**Susie Manezes - NW-Team 12- (HRSP) Contact Number: 208-739-0255  
Jon Tipton – NW Team 12 - (HRSP) Contact Number: 971-347-7314**



# **Logistics Message Crockets Knob Fire**

**ICP @ 740 Overholt St, Prairie City Oregon 97869**

Lead Medical Unit Diana Braun Phone 509-348-0091 or by Radio on CMD Channel

**Communications: Crockets Knob ICP**  
24-Hours  
Phone: **208-891-8093**

**Meal Service Hours:** Breakfast/Lunch at 0700  
Dinner at 1800

**\*\* Note:** Meal count changes need to be submitted to BCMG Tully Pritchett  
4 hours prior to delivery time.

**Shower Hours:** 0430 to 1200  
1400 to 2130

**Ordering:** 0700-2100

**Email:** [Steven.Huang@dnr.wa.gov](mailto:Steven.Huang@dnr.wa.gov)

**\*\*NOTE:** General Messages need separated by O#, E#, and C# request with fire name at top of page. Please include: Point of Contact, Report To, Date & Time needed. Name requests must have justification with minimum 48-hour reporting.

---

## **Taylor Flats Base Camp**

**4.5 miles North of Hwy 26 and Hwy 7 Junction on Hwy 7**

**Supply: 0630-2130**

direct cache orders

call or text Jeremy Marquardt at 360-880-4244

or

email [jeremy.marquardt@DNR.WA.GOV](mailto:jeremy.marquardt@DNR.WA.GOV)

**Meals:** Breakfast 0500-0900; Dinner 1800-2200

**Showers:** 0500-1200 and 1600-2200

**Ground Support:** 0600-2130

**Medical Support :** 0530-2130



# Finance Message



Finance Email: [2022.crocketsknob.finance@firenet.gov](mailto:2022.crocketsknob.finance@firenet.gov)

SUBJECT: *Include Key Word* **TIME** for Overhead, Crews & Cooperators

SUBJECT: *Include Key Word* **EQUIPMENT** for Contract Resources

## Finance Contact Numbers

PERSONNEL: 509-823-6642

EQUIPMENT: 208-890-4869

Finance Section Chief: 509-423-6011

Please Scan this QR code to send all required documents to finance or use the email below



**FINANCE CHECK IN:** [2022.crocketsknob.finance@firenet.gov](mailto:2022.crocketsknob.finance@firenet.gov)

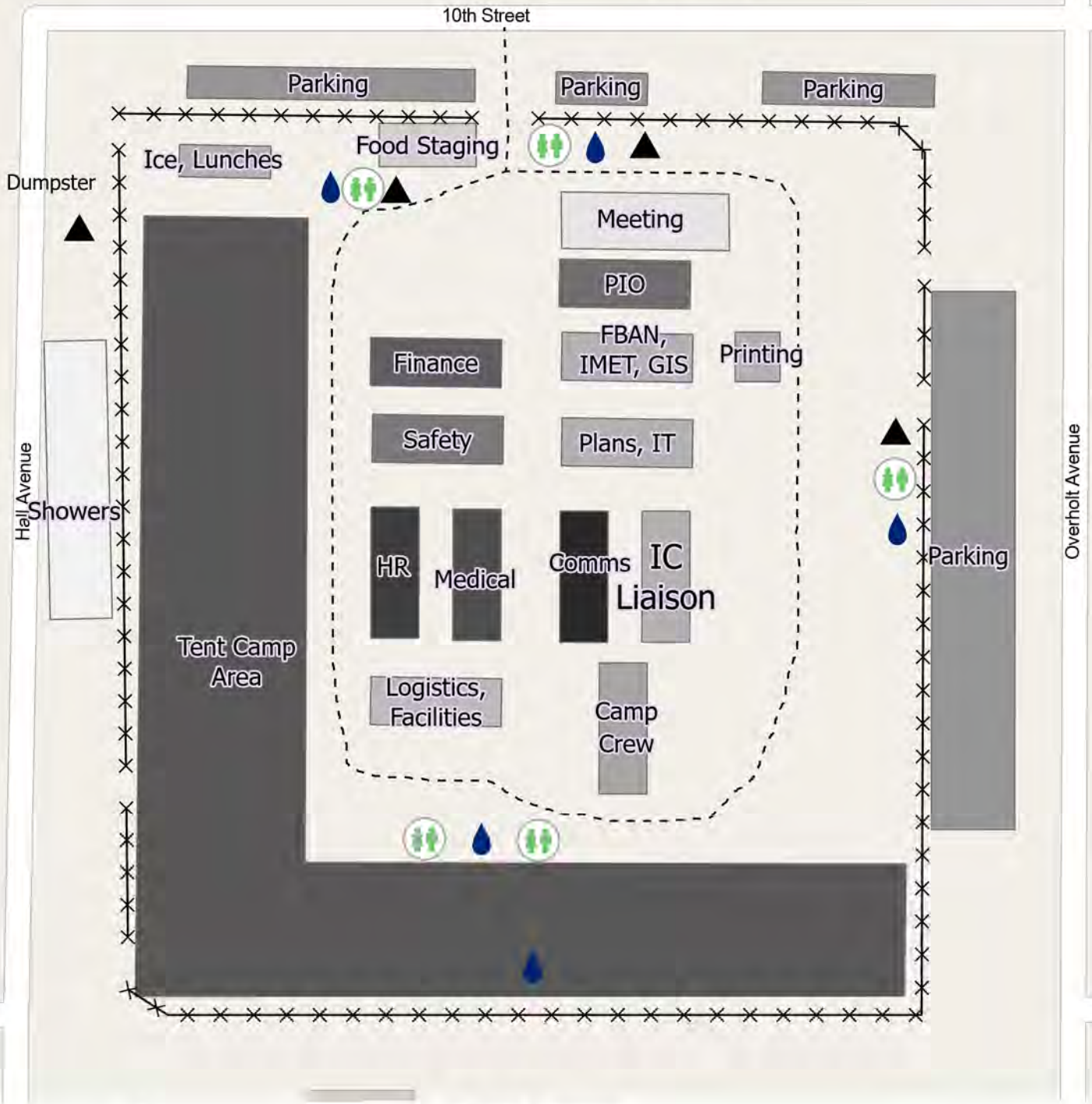
PLEASE ENSURE THE BELOW DOCUMENTS ARE EMAILED

Overhead, Crews & Cooperator Resources	Contract Resources
<ul style="list-style-type: none"> <li>• <b>Check-In:</b> Crew Manifest, Cooperative Agreement (if applies), AD Hire Letter, Resource Order</li> <li>• <b>Daily:</b> Crew Time Report (CTR), Shift Tickets</li> <li>• <b>Demob:</b> Signed OF288, Final Equipment Use Invoice (Cooperator) If you don't have a way to sign you must come to finance.</li> </ul>	<ul style="list-style-type: none"> <li>• <b>Check-In:</b> Resource Order, Contract/VIPR Agreement (make sure you have your UEI, Pre-Inspection</li> <li>• <b>Daily:</b> Shift Tickets, receipts (fuel issues, claims, etc.)</li> <li>• <b>Demob:</b> Contractor Evaluations, Final Shift Tickets and receipt(s) for Addition/Deductions, Post-Inspection, Final Signed Invoices If you don't have a way to sign you must come to finance</li> </ul>

## REMINDERS

- ★ PLEASE ENSURE YOU INCLUDE LOCATION OF WHERE YOU ARE WORKING (BRANCH OR DIVISION) ON CTR OR SHIFT TICKET
- ★ PLEASE SHOW YOUR LUNCH BREAK
- ★ PLEASE USE MILITARY TIME (0001-2400)
- ★ WHEN CLAIMING HAZARD PAY YOU MUST INCLUDE THE SUPPRESSION ACTION BEING PERFORMED. THIS INCLUDES OPERATIONS WHICH DIRECTLY SUPPORT CONTROL OF FIRE (E.G., ACTIVITIES TO EXTINGUISH THE FIRE, FIREFIGHTING, GROUND SCOUTING, SPOT FIRE PATROLLING, SEARCH AND RESCUE OPERATIONS, AND BACKFIRING).





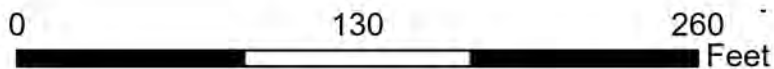
### ICP Camp

Crockets Knob  
OR-MAF-022199  
9/3/2022

### Camp Features

-  Handwashing Station
-  Toilet
-  Trash
-  Fenceline
-  Service Road

Devin Scheid





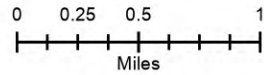




# Crocketts Knob ORMAF-022199 IAP Map

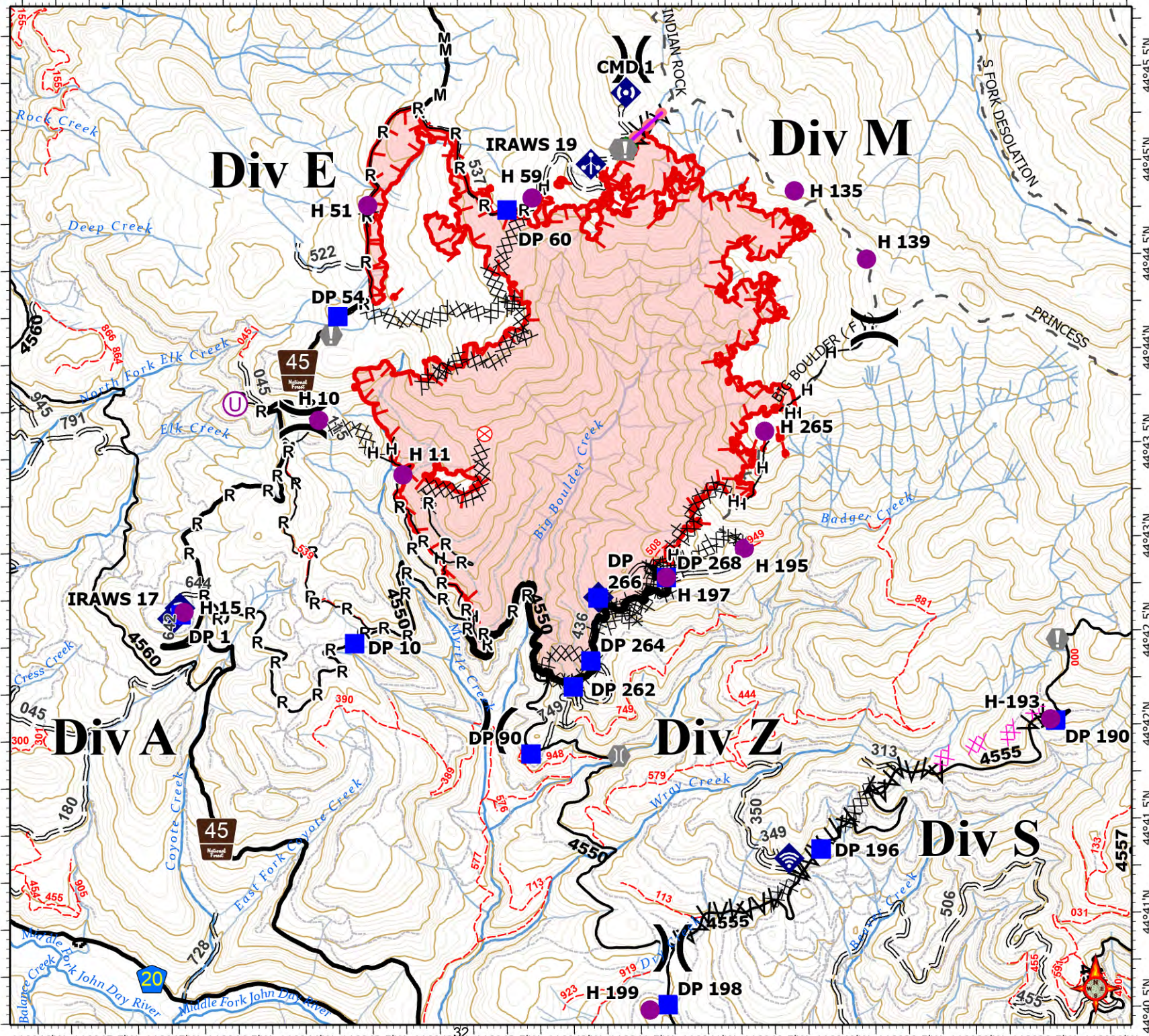
09/03/2022 Day Shift  
3170 acres at 09/01/2022 @ 2213

- Helispot
- Unimproved Landing Area
- X Division Break
- Drop Point
- ⊗ Fire Origin
- ⊕ Value at Risk
- Bridge
- ⊡ Water Development or Draft Site
- ⬆ Resource Location
- ⬆ Mobile Weather Unit
- ⬆ Internet Access
- ⬆ Repeater
- Completed Dozer Line
- Completed Fuel Break
- Completed Hand Line
- Completed Mixed Construction Line
- Completed Road as Line
- Planned Dozer Line
- Retardant Drop
- Contained
- Uncontained
- Fire Area



S. Bushnell  
09 02 22  
2125 Hours

Acres from IR and sketch  
Datum: North American 1983





# Coordinate Table

FC Point Type	Label	Latitude WGS84 DDM	Longitude WGS84 DDM
Camp	Taylor Flats Base Camp	44° 37.492' N	118° 27.375' W
Closure	1	44° 38.473' N	118° 37.716' W
Closure	15	44° 48.847' N	118° 40.688' W
Closure	2	44° 40.261' N	118° 43.341' W
Closure	3	44° 41.562' N	118° 47.318' W
Closure	4	44° 42.362' N	118° 48.647' W
Closure	5	44° 44.507' N	118° 50.862' W
Closure	6	44° 46.660' N	118° 50.349' W
Closure	7	44° 48.997' N	118° 48.192' W
Closure	8	44° 51.052' N	118° 48.674' W
Dip Site	Heli-well	44° 39.010' N	118° 40.536' W
Drop Point	DP 1	44° 42.662' N	118° 44.886' W
Drop Point	DP 10	44° 42.495' N	118° 43.594' W
Drop Point	DP 190	44° 42.027' N	118° 38.372' W
Drop Point	DP 196	44° 41.363' N	118° 40.138' W
Drop Point	DP 198	44° 40.550' N	118° 41.299' W
Drop Point	DP 262	44° 42.246' N	118° 41.967' W
Drop Point	DP 264	44° 42.383' N	118° 41.834' W
Drop Point	DP 266	44° 42.717' N	118° 41.772' W
Drop Point	DP 268	44° 42.820' N	118° 41.260' W
Drop Point	DP 54	44° 44.234' N	118° 43.682' W
Drop Point	DP 60	44° 44.786' N	118° 42.405' W
Drop Point	DP 90	44° 41.893' N	118° 42.291' W
Helispot	H-193	44° 42.035' N	118° 38.409' W
Helispot	H 10	44° 43.684' N	118° 43.835' W
Helispot	H 11	44° 43.387' N	118° 43.214' W
Helispot	H 135	44° 44.863' N	118° 40.257' W
Helispot	H 139	44° 44.494' N	118° 39.727' W
Helispot	H 15	44° 42.675' N	118° 44.864' W
Helispot	H 195	44° 42.968' N	118° 40.675' W
Helispot	H 197	44° 42.820' N	118° 41.260' W
Helispot	H 199	44° 40.523' N	118° 41.434' W
Helispot	H 265	44° 43.588' N	118° 40.508' W
Helispot	H 51	44° 44.821' N	118° 43.445' W
Helispot	H 59	44° 44.848' N	118° 42.216' W
Incident Command Post	Prairie City	44° 27.285' N	118° 42.554' W
Internet Access		44° 42.720' N	118° 41.769' W
Internet Access		44° 42.698' N	118° 44.894' W
Internet Access		44° 41.317' N	118° 40.378' W



## COVID-19 Mitigations for Crockets Knob Fire

- Masks are not required indoors unless working in a county with a HIGH COVID-19 community level. Currently, Grant County community level is MODERATE (masking indoors is optional).
- Conduct daily verbal screening checks within crews, report any COVID-like symptoms to your direct supervisor. Supervisors should report any positive symptoms to the Medical Unit for next steps.
- Observe social distancing standards while waiting in line for food and limit contact with others outside of your crew in the food service line. If possible, send crew representatives to pick up meals.
- Practice good personal hygiene, wash hands frequently and disinfect high-traffic areas on a regular basis.
- Limit close contact between firefighters and the public as much as possible to prevent exposure and spread.





# EMERGENCY PLAN INCIDENT WITHIN AN INCIDENT

## ON SCENE INCIDENT COMMANDER

In the event of an accident or medical incident of any size, your primary responsibility is to ENSURE that the victim(s) receive prompt and effective Triage, Treatment, Extrication and Transport.

- **ENSURE THE MEDICAL INCIDENT REPORT IN THE INCIDENT ACTION PLAN IS BEING USED AND FOLLOWED- \*IF DETERMINED TO BE A GREEN, DO NOT DECLARE EMERGENCY TRAFFIC AND ONLY COMPLETE LINE 1-4 ON MIR\*.**
- Conduct size-up of the incident nature of accident, number type of resources involved, latitude and longitude location (DD°MMM.MM format): notify incident communications center and supervisor, request assistance as needed.
- Order and coordinate medical and support response to the accident.
- Evaluate special needs (law enforcement, haz mat, etc.).
- Clear the command frequency if medical emergency, coordinate with incident communications and air attack for air medical transportation needs.
- Preserve and photograph the scene for accident investigation.
- Remain aware of surroundings and the status of the main incident (delegate personnel to monitor the main fire) to ensure safety of medical treatment personnel.
- Until relieved, supervise and manage all personnel involved at the incident scene.



# MEDICAL PLAN (ICS 206 WF)

Incident/Project Name		1. Operational Period						
Crocketts Knob		September 3, 2022 0600-1800						
2. Ambulance Services								
Name	Complete Address	Phone	Advanced Life Support (ALS)					
Blue Mountain Ambulance	170 Ford Rd John Day, OR	Command/911	Yes	No	X			
3. Air Ambulance Services								
Name	Phone	Location						
Life Flight Network	Command/911	20-30 min flight - LaGrande, OR						
Life Flight Network	Command/911	Pendleton, OR						
4. Hospitals								
Name Complete Address	Coordinate Standard Degrees Decimal Minutes DD° MM.MMM' N - Lat DD° MM.MMM' W - Long		Travel Time From Crockett's Knob		Phone	Helipad		Level of Care Facility
	Lat:	Long:	Air	Gnd		Yes	No	
Blue Mountain Hospital 170 Ford Rd John Day, OR	44°25.06' N	118°57.60' W	20 mins	1.5 hrs	541-575-1311	X		Level 4
	44°4.1667' N	121°16.0833' W	1 hr	4 hrs	541-882-6311	X		Level 2
St Charles Medical Center 2500 NE Neff Rd Bend, OR	45°32.616' N	122°6695' W	2 hrs	5 hrs	503-413-4321	X		Level 1 Trauma Burn Center
	45°32.616' N	122°6695' W	2 hrs	5 hrs	503-413-4321	X		Level 1 Trauma Burn Center
5. Division Branch Group	Capability			Personnel				
Div. A				(E-27) Ambo 1 (O-96) Medic 4 (O-93) Medic 2				
Div. E				(O-94) Medic 1 (O-7) EMT (E-87) Blackwoods REM				
Div. M				Utilize nearest medical resource				
Div. S				(O-95) Medic 3				
Div. Z				(O-9) REM 9 (E-51) Ambo 2				
Taylor Flats/Bates SP				(E-88) Ambo 3				
6. Prepared By (Medical Unit Leader)			7. Date/Time	8. Reviewed By (Safety Officer)			9. Date/Time	
Diana Braun			09/02/2022 1800	Jack Cates			09/02/2022 1800	

# Short-Haul Operations

## CAPABILITIES

- During an operational Short-Haul the helicopter is capable of inserting Short-Haulers into an area with tight canopy cover and/or technical terrain.
- Haul line lengths range from 100 feet to 350 feet.
- Short hauler and/or medical gear can be delivered to the medical scene even if extraction by short-haul is not necessary.

## ORDERING

- EMT or Medical Incident IC determines medical extraction is required.
- Follow local established procedures and/or Medical Incident Report (MIR) in the IRPG.
- Confirm aircraft type, call sign, estimated time of arrival and frequency.
- Give site selection information when ordering: hazards (i.e. ash, smoke, snags, aerial), tree height, terrain, and patient transport configuration (supine or seated position). Repeat hazards and give updated weather conditions as well as brief patient update to responding helicopter.

**PROCESS:** The helicopter will fly to the coordinates provided. They will make contact with ground personnel on scene with the patient using an identified air-to-ground frequency. The helicopter will complete a short-haul recon and size up, gather patient update information and then fly to a landing zone (LZ) to configure for short-haul operations. The helicopter will be monitoring the appropriate air-to-ground, air guard and victor frequencies. From this point, ground resources should only contact the helicopter in case of an emergency. During the insertion and extraction process ground personnel must be clear of the area.

## ON SCENE: EXPECT THE FOLLOWING

- 1 or 2 rescuers (at least one qualified as an EMT or higher)
- Backboard (if needed and not already on scene)
- All equipment necessary for patient extraction

The Patient Extraction Bag accommodates most backboards.  
-A patient on a backboard, TRS, SKED or litter will be inserted into the bag.



The Seat Harness is used for patients not requiring the use of a backboard.



IAP INSERT

# MEDICAL PLAN (ICS 206 WF)

Controlled Unclassified Information//Basic

## Medical Incident Report

**FOR A NON-EMERGENCY INCIDENT, WORK THROUGH CHAIN OF COMMAND TO REPORT AND TRANSPORT INJURED PERSONNEL AS NECESSARY.**

**FOR A MEDICAL EMERGENCY: IDENTIFY ON SCENE INCIDENT COMMANDER BY NAME AND POSITION AND ANNOUNCE "MEDICAL EMERGENCY" TO INITIATE RESPONSE FROM IMT COMMUNICATIONS/DISPATCH.**

Use the following items to communicate situation to communications/dispatch.

1. CONTACT COMMUNICATIONS / DISPATCH (**Verify correct frequency prior to starting report**)

*Ex: "Communications, Div. Alpha. Stand-by for Emergency Traffic."*

2. INCIDENT STATUS: *Provide incident summary (including number of patients) and command structure.*

*Ex: "Communications, I have a Red priority patient, unconscious, struck by a falling tree. Requesting air ambulance to Forest Road 1 at (Lat./Long.) This will be the Trout Meadow Medical, IC is TFLD Jones. EMT Smith is providing medical care."*

Severity of Emergency / Transport Priority	<input type="checkbox"/> RED / PRIORITY 1 Life or limb threatening injury or illness. Evacuation need is IMMEDIATE <i>Ex: Unconscious, difficulty breathing, bleeding severely, 2° – 3° burns more than 4 palm sizes, heat stroke, disoriented.</i> <input type="checkbox"/> YELLOW / PRIORITY 2 Serious Injury or illness. Evacuation may be DELAYED if necessary. <i>Ex: Significant trauma, unable to walk, 2° – 3° burns not more than 1-3 palm sizes.</i> <input type="checkbox"/> GREEN / PRIORITY 3 Minor Injury or illness. Non-Emergency transport <i>Ex: Sprains, strains, minor heat-related illness.</i>	
Nature of Injury or Illness & Mechanism of Injury		<i>Brief Summary of Injury or Illness (Ex: Unconscious, Struck by Falling Tree)</i>
Transport Request		<i>Air Ambulance / Short Haul/Hoist Ground Ambulance / Other</i>
Patient Location		<i>Descriptive Location &amp; Lat. / Long. (WGS84)</i>
Incident Name		<i>Geographic Name + "Medical" (Ex: Trout Meadow Medical)</i>
On-Scene Incident Commander		<i>Name of on-scene IC of Incident within an Incident (Ex: TFLD Jones)</i>
Patient Care		<i>Name of Care Provider (Ex: EMT Smith)</i>

3. INITIAL PATIENT ASSESSMENT: *Complete this section for each patient as applicable (start with the most severe patient)*

Patient Assessment: See IRPG page 106

Treatment:

4. TRANSPORT PLAN:

Evacuation Location (if different): *(Descriptive Location (drop point, intersection, etc.) or Lat. / Long.)* Patient's ETA to Evacuation Location:

Helispot / Extraction Site Size and Hazards:

5. ADDITIONAL RESOURCES / EQUIPMENT NEEDS:

*Example: Paramedic/EMT, Crews, Immobilization Devices, AED, Oxygen, Trauma Bag, IV/Fluid(s), Splints, Rope rescue, Wheeled litter, HAZMAT, Extrication*

6. COMMUNICATIONS: Identify State Air/Ground EMS Frequencies and Hospital Contacts as applicable

Function	Channel Name/Number	Receive (RX)	Tone/NAC *	Transmit (TX)	Tone/NAC *
COMMAND					
AIR-TO-GRND					
TACTICAL					

7. CONTINGENCY: **Considerations:** *If primary options fail, what actions can be implemented in conjunction with primary evacuation method? Be thinking ahead.*

8. ADDITIONAL INFORMATION: *Updates/Changes, etc.*

**REMEMBER:** Confirm ETA's of resources ordered. Act according to your level of training. Be Alert. Keep Calm. Think Clearly. Act Decisively.

Controlled Unclassified Information//Basic