



# INCIDENT ACTION PLAN

# CROCKETS

# KNOB

Operational Period  
Sunday, September 4<sup>th</sup>, 2022

OR-MAF-022199

P6 POXK (0604)  
221 IWR



SCAN QR CODE  
For  
BRIEFING LINK  
DOWNLOAD IAP  
DOWNLOAD MAPS  
Send in PHOTOS  
CHECK-IN  
Submit TIME to FINANCE


This page intentionally left blank.



## INCIDENT OBJECTIVES (ICS 202)

|  |   |   |
|--|---|---|
| <b>1. Incident Name:</b>   | <b>2. Operational Period: DAY</b>   |   |
| CROCKETS KNOB  | Date/Time From:<br>09/04/2022 0600      SUN   | Date/Time To:<br>09/04/2022 1800      SUN   |
| <b>3. Objective(s):</b>  |   |   |
| <ul style="list-style-type: none"> <li>• Identify, evaluate and reduce risks to firefighters and the public through the use of Deliberate Risk Assessment process.</li> <li>• Minimize acres burned and impacts to communities and infrastructure by completing a strategic risk assessment to guide operations in the development of strategies and tactics to be implemented by fire personnel.</li> <li>• Protect tribal, cultural, aquatic and wildlife resources, and sensitive plant sites.</li> <li>• Provide Initial Attack response and assistance for private and public lands within the delegated area.</li> <li>• Maintain and enhance relationships with cooperators, stake holders, landowners, and communities by providing accurate and timely information.</li> <li>• Manage cost commensurate with values at risk and maintain fiscal accountability.</li> <li>• Treat each other with dignity and respect and act in a professional manner while on the fire and in the community.</li> <li>• Ensure COVID-19 best management practices are in place and follow local CDC guidelines.</li> </ul> |   |   |
| <b>4. Operational Period Command Emphasis:</b>   |   |   |
| Implement strategies and tactics to achieve incident objectives with the least amount of risk practical and the highest probability of success.  |   |   |
| <b>General Situational Awareness:</b>  |   |   |
| Fighting fire in light flashy fuels under hot, dry, and windy conditions poses great potential for rapid fire growth. Anticipate changes in fire behavior before it happens and ensure Lookouts, Communications, Escape Routes, and Safety Zones are adequate. Maintain accountability of all assigned resources while engaged on the fire line.   |   |   |
| <b>5. Site Safety Plan Required?</b> Yes <input type="checkbox"/> No <input checked="" type="checkbox"/>   |   |   |
| <b>Approved Site Safety Plan(s) Located</b>  |   |   |
| <b>6. Incident Action Plan</b> (the items checked below are included in this Incident Action Plan):  |   |   |
| <input checked="" type="checkbox"/> ICS 202<br><input checked="" type="checkbox"/> ICS 203<br><input checked="" type="checkbox"/> ICS 204<br><input checked="" type="checkbox"/> ICS 205<br><input type="checkbox"/> ICS 205A<br><input checked="" type="checkbox"/> ICS 206   | <input type="checkbox"/> ICS 207<br><input type="checkbox"/> ICS 208<br><input checked="" type="checkbox"/> ICS 220<br><input checked="" type="checkbox"/> Map/Chart<br><input checked="" type="checkbox"/> Weather Forecast/Tides/Currents | <b>Other Attachments:</b><br><input checked="" type="checkbox"/> HR MESSAGE<br><input checked="" type="checkbox"/> UNIT LOG<br><input type="checkbox"/> _____<br><input type="checkbox"/> _____ |
| <b>7. Prepared by:</b> MARGE HUTCHINSON  | <b>Position/Title:</b> PSC2   | <b>Signature:</b> <i>Marge Hutchinson</i>   |
| <b>8. Approved by Incident Commander:</b>  | <b>Name:</b> BOB SHINDELAR  | <b>Signature:</b> <i>Bob Shindelar</i>  |
| <b>ICS 202</b>   | <b>IAP Page</b>   | <b>Date/Time:</b> 09/03/2022 2000   |

## ORGANIZATION ASSIGNMENT LIST (ICS 203)

|  |  |   |   |
|--|--|---|---|
| <b>1. Incident Name:</b>                           |  | <b>2. Operational Period: DAY</b>           |   |
| CROCKETS KNOB                                      |  | Date/Time From:<br>09/04/2022 0600      SUN | Date/Time To:<br>09/04/2022 1800      SUN   |
| <b>3. Incident Commander(s) and Command Staff:</b> |  | <b>7. Operations Section:</b>               |   |
| IC/UC  | JEFF DIMKE<br>JEFF BOUSCHOR (T)                        | SUPPLY UNIT                                 | JOHN KAUPA<br>THAD FRATER (T)   |
| DEPUTY   | BOB SHINDELAR  | GROUND SUPPORT UNIT                         | DAVE HARSH  |
| SAFETY OFFICER                                     | TROY CORN; JACK CATES<br>ERIC MILLER (T)               | COMMUNICATIONS UNIT                         | MISSY PARKER<br>JOHN LYONS (T)  |
| INFORMATION OFFICER                                | JOEL BRUMM<br>LIV STECKER                              | MEDICAL UNIT                                | EAMONN RYAN<br>DIANA BRAUN  |
| LIAISON OFFICER                                    | SCOTT CRAWFORD<br>JEFF SEVIGNEY (T)                    | SECURITY UNIT                               | TOM TAYLOR<br>JOE ROBERTSON (T)   |
| HUMAN RESOURCE SPECIALIST                          | SUSIE MANEZES (ICP)<br>JON TIPTON (TF)                 | FOOD UNIT                                   | ALEX LILLA  |
| <b>4. Agency/Organization Representative(s):</b>   |  | OPS SECTION CHIEF                           | AARON ROWE<br>JEROMY WILSON (T)   |
| <b>Agency/Organization</b>                         | <b>Name</b>  | PLANNING OPS                                | KURT RANTA<br>CODY ACORD (T)  |
| USFS - MALHEUR                                     | ANN NIESEN<br>CRAIG TRULOCK                            | STRATEGIC OPS                               | TONY ENGEL  |
| USFS - MALHEUR                                     | JOSHUA GILES   | STAGING AREA                                |   |
| USFS - UMATILLA                                    | STEPHANEY KERLEY                                       |   |   |
| ODF  | ALLISON RAYBURN  | DIVISION/GROUP                              | A      BOB HINDS<br>IAN MCCORD (T)  |
| LEAD READ  | MATT SMITH (T)   | DIVISION/GROUP                              | E      JON STONELAKE<br>ANDREW STINCHFIELD (T)  |
| INTERAGENCY RESOURCE REPRESENTATIVE                | PAUL GIBBS<br>951-903-4135                             | DIVISION/GROUP                              | G      DJ GOLDSMITH   |
| <b>5. Planning Section:</b>                        |  | DIVISION/GROUP                              | M      BRAD BRYANT  |
| CHIEF  | MARGE HUTCHINSON                                       | DIVISION/GROUP                              | S/Z      LARRY LEACH  |
| DEPUTY   | ERIC BLACK<br>HOWARD JOHNSON (VIRTUAL)                 | DIVISION/GROUP                              | CONTINGENCY      EZRA BUTTERFIELD   |
| RESOURCES UNIT                                     | JILL JOHNSON   | DIVISION/GROUP                              | STRUCTURE/IA      JIM WALKOWSKI   |
| SITUATION UNIT                                     |  |   |   |
| DOCUMENTATION UNIT                                 | DEIDRE SMITH (VIRTUAL)                                 | <b>7b. Air Operations Branch:</b>           |   |
| DEMOBILIZATION UNIT                                | MIKE HESTON (VIRTUAL)                                  | AIR OPS BRANCH DIRECTOR                     | PAUL BALFOUR  |
| FIRE BEHAVIOR ANALYST                              | DON STRAND   | AIR SUPPORT SUPERVISOR                      | TIM LYDA  |
| TRAINING SPECIALIST                                |  |   |   |
| GIS SPECIALIST                                     | SHAWN BUSHNELL   | <b>8. Finance/Administration Section:</b>   |   |
| TECHNOLOGY SUPPORT SPECIALIST                      | GEORGE JENKINS<br>BRADLEY DILG                         | CHIEF                                       | CHERI FULLER  |
| INCIDENT METEOROLOGIST                             | DEREK WILLIAMS   | DEPUTY                                      | CHRISTINA GOEBEL  |
| <b>6. Logistics Section:</b>                       |  | TIME UNIT                                   | STEVE CROW  |
| CHIEF  | KEVIN HAUGHTON (TAYLOR FLATS)<br>PAUL FOOTEN (ICP) (T) | PROCUREMENT UNIT                            | MARK BOHNET   |
| FACILITIES UNIT                                    | LEE VENNING (TAYLOR FLATS)<br>RICHARD CROWTHER (ICP)   | INCIDENT CONTRACT PROJ INSP                 | ROB HECHINGER   |
| BASE CAMP MANAGER                                  | TULLY PRITCHETT (ICP)                                  | COST UNIT                                   | KAY HIGH (VIRTUAL)  |
|  |  |   |   |
| <b>9. Prepared By:</b>                             | <b>Name:</b> JILL JOHNSON                              | <b>Position/Title:</b> RESL                 | <b>Signature:</b>  |
| ICS 203  | IAP Page   | <b>Date/Time:</b> 09/03/2022 2000           |   |



# Fire Weather Forecast

**FORECAST NO: 8**  
**PREDICTION FOR: Sunday-Monday**  
**DATE: September 4<sup>th</sup> and 5<sup>th</sup>, 2022**  
**FORECAST ISSUED: 2000 September 3<sup>rd</sup>, 2022**

**Fire: Crockets Knob**  
**UNIT: OR-MAF-022199**  
**Incident Meteorologist: Derek Williams**  
**Signed:** *Derek Williams*

**WEATHER DISCUSSION:** Lighter west and northwest winds in the wake of an exiting low pressure trough are expected today. Sheltered valleys and slopes will see more of a terrain influenced wind of less than 10 mph. A few high clouds will make their way into the area late this afternoon and evening from the northwest but the area will remain dry. Although relative humidity has improved with better morning recoveries, the afternoon will still be quite dry with humidity falling back into the upper teens. A cooler air mass will move in late this evening and overnight bringing cooler temperatures and slightly higher humidity to the area Monday.

**TODAY:**

**WEATHER:** Mostly sunny with haze.  
**MAX TEMP:** Valleys: 87-91° (2-3° warmer) MIN RH: Valleys: 16-19% (5-10% drier)  
Ridgetops: 77-82° (2-3° warmer) Ridgetops: 18-21% (5-10% drier)  
**CHC WTG RAIN:** 0% **LAL:** 1 **HAINES:** 4 (Low)

**WINDS:** Valleys: Downslope winds 2-4 mph in the morning. Upslope winds 4-6 mph developing after 1030.  
(20 feet) Ridgetops: Southeast 5-8 mph in the morning transitioning to the west up to 10 mph in the afternoon.  
**MIXING HEIGHT:** Rising to 6,500 feet by 1600.  
**TRANSPORT WIND:** West around 10 mph.  
**VISIBILITY:** 7-9 miles. **INVERSION:** Inversion lifting around 1200.

**TONIGHT:**

**WEATHER:** Increasing high cloud cover.  
**MIN TEMP:** Valleys: 50-55° (1-2° cooler) MAX RH: Valleys: 50-55% (5-7% higher)  
Ridgetops: 50-55° (1-2° cooler) Ridgetops: 46-51% (5-7% higher)  
**CHC WTG RAIN:** 0% **LAL:** 1

**WINDS:** Valleys: Downslope and down valley winds of 2-4 mph developing through the night.  
(20 FEET) Ridgetops: Light north wind around 5 mph transitioning to the southeast by morning.  
**TRANSPORT WIND:** West around 5 mph.

**MONDAY:**

**WEATHER:** Mostly sunny with haze.  
**MAX TEMP:** Valleys: 82-86° (4-5° cooler) MIN RH: Valleys: 23-27% (5-6% drier)  
Ridgetops: 73-77° (4-5° cooler) Ridgetops: 25-30% (5-6% drier)  
**CHC WTG RAIN:** 0% **LAL:** 1 **HAINES:** 4 (Low)

**WINDS:** Valleys: Downslope winds 2-4 mph in the morning. Upslope winds 4-6 mph developing after 1030.  
(20 feet) Ridgetops: Northwest around 10 mph with gusts to 15 mph.  
**MIXING HEIGHT:** Rising to 5,000 feet by 1600.  
**TRANSPORT WIND:** West around 5 mph.  
**VISIBILITY:** 6-9 miles. **INVERSION:** Little to no inversion.

**EXTENDED OUTLOOK: Tuesday through Friday:** Very warm and dry conditions with poor overnight recoveries are expected Tuesday and Wednesday as a ridge of high pressure expands northward. Winds primarily from the west will increase as well with Wednesday looking to be the windier day this week. An overall cooler weather pattern is expected as early as Thursday with a breakdown in the high pressure ridge and intrusion of a cooler air mass. However, considerable uncertainty exists in terms of precipitation with appreciable rainfall not likely.



Nearby Weather Observations →

## FIRE BEHAVIOR FORECAST

|                                  |  |
|----------------------------------|--|
| <b>FORECAST NUMBER:</b> 8        | <b>TYPE OF FIRE:</b> WILDFIRE                    |
| <b>FIRE NAME:</b> Crockets Knob  | <b>OPERATIONAL PERIOD:</b> Day Shift Sept 4 2022 |
| <b>DATE ISSUED:</b> Sept 3, 2022 | <b>TIME ISSUED:</b> 2000 HOURS                   |
| <b>UNIT:</b> OR-MAF              | Don Strand NW IMT12 FBAN                         |

### INPUTS

**WEATHER SUMMARY:** See attached weather forecast. Max temps – near upper 80's min RH near upper teens. Winds – upslope 4-6 mph with afternoon ridgetop winds Southeast 5-8 mph in the morning transitioning to the west up to 10 mph in the afternoon. Haines Index 4(low)

**FUELS:** Consists of brush, dense regeneration with a surface litter of large down wood. The fire area also contains snags and areas with remnant live trees which survived the 1996 fire.

Live fuel moistures in the Ceanothus are estimated to be near 100%. 1000-hour dead fuel moistures are in the 10% range. 10-hr and 100-hr fuel moistures are in the critically dry range.

Energy Release Component is near the 97<sup>th</sup> percentile.

### OUTPUTS

#### FIRE BEHAVIOR

##### GENERAL: HEADS UP FIRE DAY

- In areas of surface fuels of down logs and branch wood, fire behavior will be backing and flanking with low to moderate intensity. Where trees are above the surface fire, single and group torching with downwind spotting across gaps in surface fuels to available fuels (leap frogging).
- Sub alpine trees are present in the upper elevations and easily torch, producing numerous fire brands.
- Where fire gets in alignment with winds and or slope, short upslope runs in the brush, reproduction and timber stringers are possible. Potential for flare ups exists in areas of dirty burns.
- Spot fires initiate quickly, spread rapidly and are difficult to suppress.

POI: near 80-90%. Maximum spotting distance near 0.3 miles

Head fire rates of spread in the surface fuels will be 5 to 10 feet/minute. On steeper slopes and with wind gusts, 15 to 20 ft/minute.

##### SPECIFIC:

**DIV A:** Expect occasional torching in areas of dirty burns. Continue to watch for hold over spot fires.

**DIV E:** Expect fire to flank in available fuels in small unburned islands with occasional torching and spotting.

**DIV M/G:** Fire spread will continue through the brush and timbered islands, spotting across the sparse grass openings. Potential for hold over spot fires still exists west of the 45 road.

**DIV Z:** Flare ups with torching in unburned islands and areas of dirty burns is still possible. Lighter westerly winds with the upslope winds today so potential for spots across line.

**INITIAL ATTACK:** In the event resources respond to a new start, a Haines of 5 will contribute to greater fire intensity. Pay attention to wind/slope alignment. Potential for rapid rates of spread in light flashy fuels exist.

**AIR OPERATIONS:** Expect areas of smoke haze/drift in the area.

### SAFETY

Reburn potential exists under heat treated conifer reproduction in areas of dirty burn. This can be problematic near fire perimeters and lead to spotting.

In securing fire lines and mop up, pay attention to stump holes.

Snags and green trees near fire edges may become overhead hazards.

# Safety Message

4 September 2022

INCIDENT: CROCKETS KNOB

OPERATIONAL PERIOD: 0600-1800

## TOPICS: RISK MANAGEMENT

### Four Principles of Risk Management

- 1. Accept No Unnecessary Risk-** All wildland fire operations contain risk. Unnecessary risk is any risk that, if taken, will not contribute meaningfully to the mission or the task accomplishment or will needlessly jeopardize personnel or equipment.
- 2. Accept Risk When Benefits Outweigh Costs-** Even high-risk endeavors may be undertaken when the decision makers clearly acknowledge the sum of the benefits exceeds the sum of the costs.
- 3. Make Risk Decisions at the Appropriate Level-** Depending on the situation, anyone can make a risk decision. However, the appropriate level to make those decisions is that which most effectively understands the risk, allocates the resources to reduce the risk, eliminates the hazard, and implements controls.
- 4. Anticipate and Manage Risk by Planning-** Thorough planning identifies associated hazards and the steps necessary to complete the project.



### HYGIENE

Camp crud is showing itself. Some simple practices (just like those we practice at home) can reduce your chances of contracting it. Bathe at reasonable intervals. You are constantly shedding skin; get rid of it! Brush and floss every day, preferably after every meal. This will minimize the buildup of bacteria in your mouth. Wash your hands! Hand to mouth or hand to nose will spread all kinds of bacteria or viruses. Wash before meals, after bathroom breaks or whenever you touch something that is frequented by other hands. Always keep an alcohol-based sanitizer on hand. Get adequate rest! You need 8 to 10 hours a night. If you are not getting adequate rest, come see us.

*Don't learn safety by accident*

SAFETY OFFICER: Troy Corn, Jack Cates

# Deliberate Risk Assessment-Hazard Summary

4 September 2022

| Hazard                    | Mitigation   | Post Risk |
|---------------------------|--|-----------|
| Extraction Time           | Utilize shorthaul, agency and civilian medivac as treatment/timing dictates. Review ordering procedure for all aircraft. Establish redundant plans for evac if using aircraft. Identify medivac sites and helispots. Initiate ground transport to accident site for transport capability. Identify EMT/EMTP from resources assigned to division. Provide line qualified paramedics to each division as available. Review IWI protocol to ensure familiarity. Evaluate on-going need for repositioning medical personnel. Provide dust abatement on Helispots as needed.  | HIGH      |
| Aircraft                  | Utilize Air Attack. Ensure all resources are a safe distance from all bucket and retardant drops. Establish LCES. Utilize air to ground primary for fixed wing, air to ground 2 for bucket work as needed. Reference IRPG (Safe aircraft operations pg. 61-62). Ensure IA resources have coordination with unassigned local air resources to provide deconfliction.  | HIGH      |
| Hazard Trees              | Use avoidance to limit exposure time. Fall ahead to avoid exposure. Use qualified fallers or alternate methods if needed. <b>Conduct on-going risk analysis of all new and existing work areas.</b> Follow Hazard Tree Safety Guidelines (IRPG page 20-21).  | HIGH      |
| Heavy Equipment           | Post lookouts around equipment work areas. Establish communications with equipment boss and operator. Do not work down slope from equipment. Follow agency guidelines for chipping operations.   | HIGH      |
| Physical Factors          | Maintain hydration schedule. Closely monitor work rate and implement rest periods. Maintain nutrition. Ensure adequate work/rest.  | MODERATE  |
| Fire Behavior             | Maintain awareness of increased spotting distances with changes in fire weather. Be aware of burn windows and weather impacts and min/max RH for flashy fuels/local conditions. Report changes to FBAN and IMET. Establish MAP for disengagement to provide for an orderly retreat given lack of safety zones. Have a plan for disengagement that establishes a designated meeting point and maintains personnel accountability.   | MODERATE  |
| Steep Terrain/Gravity     | Do not work crews above or below each other. Post lookouts for rolling material. Watch footing in loose soil, rock and around vegetation. Do not work below heavy equipment. Scout and identify travel routes.   | MODERATE  |
| Unburned Fuels/Firing Ops | Maintain awareness fuel dryness levels. Establish LCES. Ensure management action points are implemented and followed. Weather updates as needed during burning operations. Locate indirect firelines to minimize unburned fuels. Follow Interagency Ignition Guide. Ensure communications between all firing operations. Establish road security at all firing sites. Follow approved firing plan for unburned fuels. If utilizing aerial ignitions, make sure firing plan is in place and communicated to all resources and understood. Utilize separate Air to Ground for operation as appropriate.  | MODERATE  |
| Transportation            | Be aware of increased traffic flow over Labor Day Weekend. Sign all incident roads that provide access to divisions. Provide daily updated travel plan maps. Practice defensive driving. In local communities obey the posted speed limits in town and recognize the school zone around camp and the presence of children along streets and roadways. Use reader boards to provide advanced warning and control entry to base camp as needed. Identify and evaluate contingency and alternate escape and travel routes. Provide dust abatement and grading as needed. Provide advanced scouting for transport access and bridge weight restrictions. Evaluate road conditions for access, egress, and travel routes to the north of the fire for drivability and safety. | MODERATE  |



## Deliberate Risk Assessment-Hazard Summary

### 4 September 2022

|  |  |          |
|--|--|----------|
| Initial Attack                                       | Ensure identified IA resources are briefed of expectations and ensure communication plan is provided. Ensure resources are briefed on IA command structure. Provide identified crews with area maps.   | MODERATE |
| ATV/UTV  | Follow agency specific rules and regulations for proper PPE. Make sure operators are properly licensed and trained. Operate machine to the current and expected conditions. Do not overload machine.   | MODERATE |
| Environmental Factors                                | Assign medical personnel to camp. Assess for known allergies and report to medical personnel. Obtain Bee Bopper/wasp spray and yellow jacket traps. Maintain an awareness of livestock, wildlife and rattlesnakes. Identify and report allergies to your chain of command. Work with READs and GISS to evaluate and identify mineshafts. | MODERATE |
| Communication  | Evaluate for dead zones prior to engagement. Utilize human repeaters as needed. Ensure coverage and accountability of resources in problem areas. Spiking resources must be in cell coverage. 24 staffing at JDICC will serve as a backup. Spike locations relayed to Ops daily.   | LOW      |
| Public Interaction                                   | Ensure changes to closures and evacuation levels are fully communicated to incident personnel and the public. Implement area and road closures as necessary. Maintain a lookout for hunters in and out of closure areas. Maintain awareness of evacuation areas and provide accurate information dissemination.                          | LOW      |
| Viral Transmission Mitigations, Communicable Disease | Maintain awareness of health, perform self-checks, maintain social distancing, wear face coverings in accordance with CDC recommendations. Report and isolate if not feeling well. Establish liaison with Grant County Public Health.  | LOW      |

**Division/Group Assignment List (ICS 204 WF)**  
**Controlled Unclassified Information//Basic**

|   |         |   |   |                                       |                       |                             |
|---|---------|---|---|---------------------------------------|-----------------------|-----------------------------|
| <b>1. Incident Name:</b>                          |         |   | <b>3.</b>                                   |                                       |                       |                             |
| CROCKETS KNOB                                     |         |   | <b>Branch:</b>                              |                                       | <b>Division/Group</b> |                             |
| <b>2. Operational Period:</b> DAY                 |         |   | A   |                                       |                       |                             |
| Date/Time From:<br>09/04/2022 0600 SUN            |         | Date/Time To:<br>09/04/2022 1800 SUN                        |   |                                       |                       |                             |
| <b>4. Operations Personnel</b>                    |         |   |   |                                       |                       |                             |
| <b>OPERATIONS CHIEF</b>                           |         | AARON ROWE; JEROMY WILSON (T)<br>KURT RANTA; CODY ACORD (T) |   | <b>DIVISION/GROUP SUPERVISOR</b>      |                       | BOB HINDS<br>IAN MCCORD (T) |
| <b>SAFETY OFFICER</b>                             |         | TROY CORN; JACK CATES<br>ERIC MILLER (T)                    |   | <b>AIR OPERATIONS BRANCH DIRECTOR</b> |                       | PAUL BALFOUR                |
| <b>5. Resources Assigned this Period</b>          |         |   |   |                                       |                       |                             |
| Strike Team / Task Force /<br>Resource Designator |         | LWD   | Leader                                      | Number<br>Persons                     | Drop Off PT./Time     | Pick Up PT./Time            |
| O-61.82 SOF2                                      |         | 09/10   | DON WALLER                                  | 1                                     | BASE CAMP/0600        | BASE CAMP/1800              |
| O-21 TFLD   |         | 09/05   | MICHAEL CEARNS                              | 1                                     | BASE CAMP/0600        | BASE CAMP/1800              |
| O-83 TFLD   |         | 09/10   | ERIC METZGER                                | 1                                     | BASE CAMP/0600        | BASE CAMP/1800              |
| O-144 FOBS  |         | 09/15   | DAVID REYNOLDS                              | 1                                     | BASE CAMP/0600        | BASE CAMP/1800              |
| O-145 FOBS (T)                                    |         | 09/15   | BRADLEY WALKER                              | 1                                     | BASE CAMP/0600        | BASE CAMP/1800              |
| O-1 FMOD  |         | 09/05   | JERRY PETTYJOHN                             | 2                                     | BASE CAMP/0600        | BASE CAMP/1800              |
| C-15 CRW1 PRESCOTT IHC                            |         | 09/12   | DARIN FISHER                                | 23                                    | BASE CAMP/0600        | BASE CAMP/1800              |
| C-5 CR2I GRAYBACK FORESTRY NCC 13B                |         | 09/15   | DAVID BLANCO                                | 18                                    | BASE CAMP/0600        | BASE CAMP/1800              |
| C-17 CR2I SRV #10                                 |         | 09/07   | MAGDALENO GUARDADO                          | 22                                    | BASE CAMP/0600        | BASE CAMP/1800              |
| C-24 CRW2 WEST COAST REFOREST CR07                |         | 09/15   | BENJAMIN MARTINEZ                           | 20                                    | BASE CAMP/0600        | BASE CAMP/1800              |
| E-4 ENG6 GRAYBACK FORESTRY                        |         | 09/16   | ERNIE SMITH                                 | 3                                     | BASE CAMP/0600        | BASE CAMP/1800              |
| E-18 ENG4 AAA THUNDERBOLT                         |         | 09/16   | ROY CATES                                   | 3                                     | BASE CAMP/0600        | BASE CAMP/1800              |
| E-35 ENG6 STRIKE BACK LLC                         |         | 09/08   | JOE PICKET                                  | 2                                     | BASE CAMP/0600        | BASE CAMP/1800              |
| E-37 ENG4 AAA THUNDERBOLT FIRE SVC                |         | 09/08   | ROBERT STEWART                              | 3                                     | BASE CAMP/0600        | BASE CAMP/1800              |
| E-39 ENG BIGFOOT                                  |         | 09/09   | TRAVIS ALBRECHT                             | 3                                     | BASE CAMP/0600        | BASE CAMP/1800              |
| <b>8. Division/Group Communication Summary</b>    |         |   |   |                                       |                       |                             |
| Function  | Channel | RX Frequency N/W  | RX Tone/NAC                                 | TX Frequency N/W                      | TX Tone/NAC           | Mode                        |
| COMMAND   | 1       | 170.4250  | 131.8                                       | 168.0750                              | 131.8                 | A                           |
| COMMAND   | 2       | 170.4125  | 131.8                                       | 165.9625                              | 131.8                 | A                           |
| TACTICAL  | 4       | 168.0500  | 131.8                                       | 168.0500                              | 131.8                 | A                           |
| AIR TO GROUND                                     | 13      | 167.0750  |   | 167.0750                              |                       | A                           |
| <b>9. Prepared By (Resource Unit Leader)</b>      |         |   | <b>Approved By (Planning Section Chief)</b> |                                       | <b>Date</b>           | <b>Time</b>                 |
| JILL JOHNSON                                      |         |   | MARGE HUTCHINSON                            |                                       | 09/03/2022            | 2000                        |

## Division/Group Assignment List (ICS 204 WF)

Controlled Unclassified Information//Basic

|   |         |   |   |                                       |                       |                             |
|---|---------|---|---|---------------------------------------|-----------------------|-----------------------------|
| <b>1. Incident Name:</b>  |         |   |   | <b>3.</b>                             |                       |                             |
| CROCKETS KNOB   |         |   |   | <b>Branch:</b>                        | <b>Division/Group</b> |                             |
| <b>2. Operational Period: DAY</b>   |         |   |   |                                       |                       |                             |
| Date/Time From:<br>09/04/2022 0600      SUN   |         | Date/Time To:<br>09/04/2022 1800      SUN                   |   | A                                     |                       |                             |
| <b>4. Operations Personnel</b>  |         |   |   |                                       |                       |                             |
| <b>OPERATIONS CHIEF</b>   |         | AARON ROWE; JEROMY WILSON (T)<br>KURT RANTA; CODY ACORD (T) |   | <b>DIVISION/GROUP SUPERVISOR</b>      |                       | BOB HINDS<br>IAN MCCORD (T) |
| <b>SAFETY OFFICER</b>   |         | TROY CORN; JACK CATES<br>ERIC MILLER (T)                    |   | <b>AIR OPERATIONS BRANCH DIRECTOR</b> |                       | PAUL BALFOUR                |
| <b>5. Resources Assigned this Period</b>  |         |   |   |                                       |                       |                             |
| Strike Team / Task Force /<br>Resource Designator   |         | LWD   | Leader                                      | Number<br>Persons                     | Drop Off PT./Time     | Pick Up PT./Time            |
| E-60 WTS2 ALL WET TRUCKING  |         | 09/10   | JACOB HOOVER                                | 1                                     | BASE CAMP/0600        | BASE CAMP/1800              |
| E-61 WTS2 ALL WET TRUCKING  |         | 09/10   | WILLIAM HOOVER                              | 1                                     | BASE CAMP/0600        | BASE CAMP/1800              |
| E-93 WTS2 STORM CARPENTER   |         | 09/12   | STACY COATES                                | 1                                     | BASE CAMP/0600        | BASE CAMP/1800              |
| E-12 UTV KD OUTDOORS  |         |   | UNSTAFFED                                   |                                       | BASE CAMP/0600        | BASE CAMP/1800              |
| E-27 AMB1 CASCADE MED TRANSPORT   |         | 09/06   | BRADEY HOLT                                 | 2                                     | BASE CAMP/0600        | BASE CAMP/1800              |
| O-96 EMPF MEDIC 4 FIRELINE MEDICS   |         | 09/11   | MATT FREEBORN                               | 1                                     | BASE CAMP/0600        | BASE CAMP/1800              |
| O-93 EMPF MEDIC 2 FRONTLINE EMS   |         | 09/10   | ASHLEY CARTER                               | 1                                     | BASE CAMP/0600        | BASE CAMP/1800              |
| <b>6. Control Operations/Work Assignments:</b>  |         |   |   |                                       |                       |                             |
| <p>TASK: Hold fire east of the dozer line in Myrtle Creek, burning out pockets as needed. Prepare to fire the 45 Road. Continue mop-up and patrol Road 4550. Prep towards 4560.</p> <p>PURPOSE: Prevent fire growth that impacts private property, cultural and natural resources, and remaining timber stands within Summit Fire scar.</p> <p>END STATE: Fire is contained east of Road 45 and north of Road 4550.</p> |         |   |   |                                       |                       |                             |
| <b>7. Special Instructions:</b>   |         |   |   |                                       |                       |                             |
| Engines and tenders may NOT draft directly from natural water sources, such as creeks. Drafting will occur only from Fold-a-tanks.  |         |   |   |                                       |                       |                             |
| Regional Saw Coordinators, Aaron Pedersen & Marc Cormier, will notify the DIVS when entering and leaving the Division.  |         |   |   |                                       |                       |                             |
| <b>8. Division/Group Communication Summary</b>  |         |   |   |                                       |                       |                             |
| Function  | Channel | RX Frequency N/W  | RX Tone/NAC                                 | TX Frequency N/W                      | TX Tone/NAC           | Mode                        |
| COMMAND   | 1       | 170.4250  | 131.8                                       | 168.0750                              | 131.8                 | A                           |
| COMMAND   | 2       | 170.4125  | 131.8                                       | 165.9625                              | 131.8                 | A                           |
| TACTICAL  | 4       | 168.0500  | 131.8                                       | 168.0500                              | 131.8                 | A                           |
| AIR TO GROUND   | 13      | 167.0750  |   | 167.0750                              |                       | A                           |
| <b>9. Prepared By (Resource Unit Leader)</b>  |         |   | <b>Approved By (Planning Section Chief)</b> |                                       | <b>Date</b>           | <b>Time</b>                 |
| JILL JOHNSON  |         |   | MARGE HUTCHINSON                            |                                       | 09/03/2022            | 2000                        |

**Division/Group Assignment List (ICS 204 WF)**  
**Controlled Unclassified Information//Basic**

|   |         |   |   |                                       |                       |   |
|---|---------|---|---|---------------------------------------|-----------------------|---|
| <b>1. Incident Name:</b>                          |         |   | <b>3.</b>                                   |                                       |                       |   |
| CROCKETS KNOB                                     |         |   | <b>Branch:</b>                              |                                       | <b>Division/Group</b> |   |
| <b>2. Operational Period:</b> DAY                 |         |   |   |                                       | E                     |   |
| Date/Time From:<br>09/04/2022 0600 SUN            |         | Date/Time To:<br>09/04/2022 1800 SUN                        |   |                                       |                       |   |
| <b>4. Operations Personnel</b>                    |         |   |   |                                       |                       |   |
| <b>OPERATIONS CHIEF</b>                           |         | AARON ROWE; JEROMY WILSON (T)<br>KURT RANTA; CODY ACORD (T) |   | <b>DIVISION/GROUP SUPERVISOR</b>      |                       | JON STONELAKE<br>ANDREW STINCHFIELD (T) |
| <b>SAFETY OFFICER</b>                             |         | TROY CORN; JACK CATES<br>ERIC MILLER (T)                    |   | <b>AIR OPERATIONS BRANCH DIRECTOR</b> |                       | PAUL BALFOUR                            |
| <b>5. Resources Assigned this Period</b>          |         |   |   |                                       |                       |   |
| Strike Team / Task Force /<br>Resource Designator |         | LWD   | Leader                                      | Number<br>Persons                     | Drop Off PT./Time     | Pick Up PT./Time                        |
| O-61.80 SOF2                                      |         | 09/10   | PAUL BRNA                                   | 1                                     | BASE CAMP/0600        | BASE CAMP/1800                          |
| O-84 TFLD   |         | 09/11   | SCOTT BENINATI                              | 1                                     | BASE CAMP/0600        | BASE CAMP/1800                          |
| O-86 TFLD   |         | 09/12   | NIC TURCO                                   | 1                                     | BASE CAMP/0600        | BASE CAMP/1800                          |
| O-155 TFLD  |         | 09/15   | TIM SCOTT                                   | 1                                     | BASE CAMP/0600        | BASE CAMP/1800                          |
| O-14 HEQB   |         | 09/05   | NICK SCHULZ                                 | 1                                     | BASE CAMP/0600        | BASE CAMP/1800                          |
| O-16 HEQB (T)                                     |         | 09/06   | THOMAS FISHER                               | 1                                     | BASE CAMP/0600        | BASE CAMP/1800                          |
| O-54 HEQB   |         | 09/12   | JAMES MAYOR                                 | 1                                     | BASE CAMP/0600        | BASE CAMP/1800                          |
| O-80 HEQB   |         | 09/09   | WHITNEY VANDEWIELE                          | 1                                     | BASE CAMP/0600        | BASE CAMP/1800                          |
| O-156 HEQB  |         | 09/15   | JAMES GOELLER                               | 1                                     | BASE CAMP/0600        | BASE CAMP/1800                          |
| O-157 HEQB  |         | 09/15   | MATT JONES                                  | 1                                     | BASE CAMP/0600        | BASE CAMP/1800                          |
| O-158 HEQB (T)                                    |         | 09/15   | TYLER TOMLINSON                             | 1                                     | BASE CAMP/0600        | BASE CAMP/1800                          |
| O-3 FMOD WEBB                                     |         | 09/05   | MARK WEBB                                   | 2                                     | BASE CAMP/0600        | BASE CAMP/1800                          |
| O-128 FMOD SWEDBERG CONTR                         |         | 09/12   | TIMOTHY WAGNER                              | 2                                     | BASE CAMP/0600        | BASE CAMP/1800                          |
| C-7 CRW1 EL CARISO IHC                            |         | 09/09   | CHARLES KOTT                                | 22                                    | BASE CAMP/0600        | BASE CAMP/1800                          |
| C-8 CRW1 INYO IHC                                 |         | 09/08   | JOEL SCHILLING                              | 21                                    | BASE CAMP/0600        | BASE CAMP/1800                          |
| C-9 CRW2 IRON MOUNTAIN FF                         |         | 09/10   | VICTOR CISNEROS                             | 20                                    | BASE CAMP/0600        | BASE CAMP/1800                          |
| <b>8. Division/Group Communication Summary</b>    |         |   |   |                                       |                       |   |
| Function  | Channel | RX Frequency N/W  | RX Tone/NAC                                 | TX Frequency N/W                      | TX Tone/NAC           | Mode                                    |
| COMMAND   | 1       | 170.4250  | 131.8                                       | 168.0750                              | 131.8                 | A                                       |
| COMMAND   | 2       | 170.4125  | 131.8                                       | 165.9625                              | 131.8                 | A                                       |
| TACTICAL  | 5       | 168.2000  | 131.8                                       | 168.2000                              | 131.8                 | A                                       |
| AIR TO GROUND                                     | 13      | 167.0750  |   | 167.0750                              |                       | A                                       |
| <b>9. Prepared By (Resource Unit Leader)</b>      |         |   | <b>Approved By (Planning Section Chief)</b> |                                       | <b>Date</b>           | <b>Time</b>                             |
| JILL JOHNSON                                      |         |   | MARGE HUTCHINSON                            |                                       | 09/03/2022            | 2000                                    |

**Division/Group Assignment List (ICS 204 WF)**  
**Controlled Unclassified Information//Basic**

|  |         |   |   |                                       |                                |   |
|--|---------|---|---|---------------------------------------|--------------------------------|---|
| <b>1. Incident Name:</b>                       |         |   |   | <b>3.</b>                             |                                |   |
| CROCKETS KNOB                                  |         |   |   | <b>Branch:</b>                        | <b>Division/Group</b><br><br>E |   |
| <b>2. Operational Period: DAY</b>              |         |   |   |                                       |                                |   |
| Date/Time From:<br>09/04/2022 0600      SUN    |         | Date/Time To:<br>09/04/2022 1800      SUN                   |   |                                       |                                |   |
| <b>4. Operations Personnel</b>                 |         |   |   |                                       |                                |   |
| <b>OPERATIONS CHIEF</b>                        |         | AARON ROWE; JEROMY WILSON (T)<br>KURT RANTA; CODY ACORD (T) |   | <b>DIVISION/GROUP SUPERVISOR</b>      |                                | JON STONELAKE<br>ANDREW STINCHFIELD (T) |
| <b>SAFETY OFFICER</b>                          |         | TROY CORN; JACK CATES<br>ERIC MILLER (T)                    |   | <b>AIR OPERATIONS BRANCH DIRECTOR</b> |                                | PAUL BALFOUR                            |
| <b>5. Resources Assigned this Period</b>       |         |   |   |                                       |                                |   |
| Strike Team / Task Force / Resource Designator |         | LWD   | Leader                                      | Number Persons                        | Drop Off PT./Time              | Pick Up PT./Time                        |
| C-10 CRW2 CSR ENTERPR CRS3                     |         | 09/10   | JUBENCIO SALDANG                            | 20                                    | BASE CAMP/0600                 | BASE CAMP/1800                          |
| C-16 CRW1 PIKE IHC                             |         |   | DAVID SMALLMAN                              | 20                                    | BASE CAMP/0600                 | BASE CAMP/1800                          |
| C-18 CR2I VALE BLM SRV #12                     |         | 09/07   | JAY JACOBO                                  | 20                                    | BASE CAMP/0600                 | BASE CAMP/1800                          |
| C-25 CRW2 SZ FORESTRY FULLERTON CREW 1         |         | 09/15   | RICHARD FULLERTON                           | 20                                    | BASE CAMP/0600                 | BASE CAMP/1800                          |
| E-3 ENG6 GRAYBACK FORESTRY                     |         | 09/04   | CHRIS KENNEDY                               | 3                                     | BASE CAMP/0600                 | BASE CAMP/1800                          |
| E-38 ENG4 AAA THUNDERBOLT FIRE SVC             |         | 09/16   | JAMES GRANT                                 | 3                                     | BASE CAMP/0600                 | BASE CAMP/1800                          |
| E-77 ENG6 OREGON WOODS                         |         | 09/11   | RAVEN PARKINS                               | 3                                     | BASE CAMP/0600                 | BASE CAMP/1800                          |
| E-79 ENG6 HI COUNTRY LLC E1021                 |         | 09/11   | JOHN CONGER                                 | 3                                     | BASE CAMP/0600                 | BASE CAMP/1800                          |
| E-80 ENG6 A1 FIRESTORM E5                      |         | 09/11   | DONALD LAFFERTY                             | 3                                     | BASE CAMP/0600                 | BASE CAMP/1800                          |
| E-81 ENG6 TIMBER BASIN CONTR                   |         | 09/11   | SCOTT FARMER                                | 3                                     | BASE CAMP/0600                 | BASE CAMP/1800                          |
| E-5 WTS2 45 CONTRACTING LLC                    |         | 09/04   | MIKE NAULT                                  | 1                                     | BASE CAMP/0600                 | BASE CAMP/1800                          |
| E-95 WTS2 VEGETATION SOLUTIONS                 |         | 09/12   | JOHN MCKENZIE                               | 1                                     | BASE CAMP/0600                 | BASE CAMP/1800                          |
| E-113 WTS2 KING INC                            |         | 09/15   | DAVID SHEFFEL                               | 1                                     | BASE CAMP/0600                 | BASE CAMP/1800                          |
| E-114 WTS2 SAULS MOBILE WASH                   |         | 09/13   | WAYNE SAUL                                  | 1                                     | BASE CAMP/0600                 | BASE CAMP/1800                          |
| E-17 DZR2 J & D LOGGING & CONTR                |         | 09/05   | JOHN SANOWSKI                               | 2                                     | BASE CAMP/0600                 | BASE CAMP/1800                          |
| E-98 DZR2 CARTER                               |         | 09/13   | PATTON CARTER                               | 2                                     | BASE CAMP/0600                 | BASE CAMP/1800                          |
| <b>8. Division/Group Communication Summary</b> |         |   |   |                                       |                                |   |
| Function                                       | Channel | RX Frequency N/W  | RX Tone/NAC                                 | TX Frequency N/W                      | TX Tone/NAC                    | Mode                                    |
| COMMAND  | 1       | 170.4250  | 131.8                                       | 168.0750                              | 131.8                          | A                                       |
| COMMAND  | 2       | 170.4125  | 131.8                                       | 165.9625                              | 131.8                          | A                                       |
| TACTICAL                                       | 5       | 168.2000  | 131.8                                       | 168.2000                              | 131.8                          | A                                       |
| AIR TO GROUND                                  | 13      | 167.0750  |   | 167.0750                              |                                | A                                       |
| <b>9. Prepared By (Resource Unit Leader)</b>   |         |   | <b>Approved By (Planning Section Chief)</b> |                                       | <b>Date</b>                    | <b>Time</b>                             |
| JILL JOHNSON                                   |         |   | MARGE HUTCHINSON                            |                                       | 09/03/2022                     | 2000                                    |

## Division/Group Assignment List (ICS 204 WF)

Controlled Unclassified Information//Basic

|   |         |   |   |                                       |                                |   |
|---|---------|---|---|---------------------------------------|--------------------------------|---|
| <b>1. Incident Name:</b>                                    |         |   |   | <b>3.</b>                             |                                |   |
| CROCKETS KNOB   |         |   |   | <b>Branch:</b>                        | <b>Division/Group</b><br><br>E |   |
| <b>2. Operational Period:</b> <b>DAY</b>                    |         |   |   |                                       |                                |   |
| Date/Time From:<br>09/04/2022 0600                      SUN |         | Date/Time To:<br>09/04/2022 1800                      SUN   |   |                                       |                                |   |
| <b>4. Operations Personnel</b>                              |         |   |   |                                       |                                |   |
| <b>OPERATIONS CHIEF</b>                                     |         | AARON ROWE; JEROMY WILSON (T)<br>KURT RANTA; CODY ACORD (T) |   | <b>DIVISION/GROUP SUPERVISOR</b>      |                                | JON STONELAKE<br>ANDREW STINCHFIELD (T) |
| <b>SAFETY OFFICER</b>                                       |         | TROY CORN; JACK CATES<br>ERIC MILLER (T)                    |   | <b>AIR OPERATIONS BRANCH DIRECTOR</b> |                                | PAUL BALFOUR                            |
| <b>5. Resources Assigned this Period</b>                    |         |   |   |                                       |                                |   |
| Strike Team / Task Force /<br>Resource Designator           |         | LWD   | Leader                                      | Number<br>Persons                     | Drop Off PT./Time              | Pick Up PT./Time                        |
| E-29 MBM2 MORRIS FORESTRY                                   |         | 09/06   | DOU GHARITY                                 | 2                                     | BASE CAMP/0600                 | BASE CAMP/1800                          |
| E-33 MBM1 BRUCE YOUNG LOGGING                               |         | 09/09   | MATT MCLAREN                                | 2                                     | BASE CAMP/0600                 | BASE CAMP/1800                          |
| E-115 MBM1 BOULDER RIDGE CONSTR                             |         | 09/14   | GARRY ALLEN                                 | 2                                     | BASE CAMP/0600                 | BASE CAMP/1800                          |
| E-99 MAST JLC CONTRACTING                                   |         | 09/13   | BRIAN STAHANCYK                             | 2                                     | BASE CAMP/0600                 | BASE CAMP/1800                          |
| E-62 FEL1 J & D LOGGING & CONTR                             |         | 09/10   | LJ SADOWSKI                                 | 2                                     | BASE CAMP/0600                 | BASE CAMP/1800                          |
| E-10 CHP2 ROGUE RIVE FIRE & WATER                           |         | 09/08   | AUSTIN HUTTEMA                              | 3                                     | BASE CAMP/0600                 | BASE CAMP/1800                          |
| E-11 UTV KD OUTDOORS  |         |   | UNSTAFFED                                   |                                       | BASE CAMP/0600                 | BASE CAMP/1800                          |
| E-109 UTV E OREGON RENTALS                                  |         |   | UNSTAFFED                                   |                                       | BASE CAMP/0600                 | BASE CAMP/1800                          |
| E-119 UTV E OREGON RENTALS                                  |         |   | UNSTAFFED                                   |                                       | BASE CAMP/0600                 | BASE CAMP/1800                          |
| O-122 REAF  |         | 09/13   | SUSAN THEIS                                 | 1                                     | BASE CAMP/0600                 | BASE CAMP/1800                          |
| O-165 REAF (T)  |         | 09/15   | ERIN BURKE                                  | 1                                     | BASE CAMP/0600                 | BASE CAMP/1800                          |
| READ  |         | 09/16   | MORGAN ISSACS                               | 1                                     | BASE CAMP/0600                 | BASE CAMP/1800                          |
| O-7 EMT   |         | 09/06   | DANIEL SOLOMON                              | 1                                     | BASE CAMP/0600                 | BASE CAMP/1800                          |
| O-94 EMPF MEDIC 1 ADVENTURE MEDICS                          |         | 09/10   | CHRISTIAN MILLER                            | 1                                     | BASE CAMP/0600                 | BASE CAMP/1800                          |
| E-87 REMS BLACKWOODS EMERG SVC                              |         | 09/12   | NICK BRUCKNER                               | 4                                     | BASE CAMP/0600                 | BASE CAMP/1800                          |
| <b>8. Division/Group Communication Summary</b>              |         |   |   |                                       |                                |   |
| Function  | Channel | RX Frequency N/W  | RX Tone/NAC                                 | TX Frequency N/W                      | TX Tone/NAC                    | Mode                                    |
| COMMAND   | 1       | 170.4250  | 131.8                                       | 168.0750                              | 131.8                          | A                                       |
| COMMAND   | 2       | 170.4125  | 131.8                                       | 165.9625                              | 131.8                          | A                                       |
| TACTICAL  | 5       | 168.2000  | 131.8                                       | 168.2000                              | 131.8                          | A                                       |
| AIR TO GROUND   | 13      | 167.0750  |   | 167.0750                              |                                | A                                       |
| <b>9. Prepared By (Resource Unit Leader)</b>                |         |   | <b>Approved By (Planning Section Chief)</b> |                                       | <b>Date</b>                    | <b>Time</b>                             |
| JILL JOHNSON  |         |   | MARGE HUTCHINSON                            |                                       | 09/03/2022                     | 2000                                    |

**Division/Group Assignment List (ICS 204 WF)**  
**Controlled Unclassified Information//Basic**

|   |         |   |   |                                       |                       |   |
|---|---------|---|---|---------------------------------------|-----------------------|---|
| <b>1. Incident Name:</b>  |         |   | <b>3.</b>                                   |                                       |                       |   |
| CROCKETS KNOB   |         |   | <b>Branch:</b>                              |                                       | <b>Division/Group</b> |   |
| <b>2. Operational Period: DAY</b>   |         |   |   |                                       | E                     |   |
| Date/Time From:<br>09/04/2022 0600      SUN   |         | Date/Time To:<br>09/04/2022 1800      SUN                   |   |                                       |                       |   |
| <b>4. Operations Personnel</b>  |         |   |   |                                       |                       |   |
| <b>OPERATIONS CHIEF</b>   |         | AARON ROWE; JEROMY WILSON (T)<br>KURT RANTA; CODY ACORD (T) |   | <b>DIVISION/GROUP SUPERVISOR</b>      |                       | JON STONELAKE<br>ANDREW STINCHFIELD (T) |
| <b>SAFETY OFFICER</b>   |         | TROY CORN; JACK CATES<br>ERIC MILLER (T)                    |   | <b>AIR OPERATIONS BRANCH DIRECTOR</b> |                       | PAUL BALFOUR                            |
| <b>5. Resources Assigned this Period</b>  |         |   |   |                                       |                       |   |
| Strike Team / Task Force /<br>Resource Designator   |         | LWD   | Leader                                      | Number<br>Persons                     | Drop Off PT./Time     | Pick Up PT./Time                        |
|   |         |   |   |                                       |                       |   |
|   |         |   |   |                                       |                       |   |
|   |         |   |   |                                       |                       |   |
| <b>6. Control Operations/Work Assignments:</b>  |         |   |   |                                       |                       |   |
| <p>TASK: Hold burn-out on 45 Road and identify and secure new spots. Scout spot fires northwest and identify containment options.</p> <p>PURPOSE: Prevent fire growth that impacts cultural and natural resources, remaining timber stands within the Summit Fire scar, and the Indian Rock Lookout.</p> <p>END STATE: Fire is contained east of 45 Road.</p> |         |   |   |                                       |                       |   |
| <b>7. Special Instructions:</b>   |         |   |   |                                       |                       |   |
| <p>Engines and tenders may NOT draft directly from natural water sources, such as creeks. Drafting will occur only from Fold-a-tanks.</p> <p>Regional Saw Coordinators, Aaron Pedersen &amp; Marc Cormier, will notify the DIVS when entering and leaving the Division.</p>   |         |   |   |                                       |                       |   |
| <b>8. Division/Group Communication Summary</b>  |         |   |   |                                       |                       |   |
| Function  | Channel | RX Frequency N/W  | RX Tone/NAC                                 | TX Frequency N/W                      | TX Tone/NAC           | Mode                                    |
| COMMAND   | 1       | 170.4250  | 131.8                                       | 168.0750                              | 131.8                 | A                                       |
| COMMAND   | 2       | 170.4125  | 131.8                                       | 165.9625                              | 131.8                 | A                                       |
| TACTICAL  | 5       | 168.2000  | 131.8                                       | 168.2000                              | 131.8                 | A                                       |
| AIR TO GROUND   | 13      | 167.0750  |   | 167.0750                              |                       | A                                       |
| <b>9. Prepared By (Resource Unit Leader)</b>  |         |   | <b>Approved By (Planning Section Chief)</b> |                                       | <b>Date</b>           | <b>Time</b>                             |
| JILL JOHNSON  |         |   | MARGE HUTCHINSON                            |                                       | 09/03/2022            | 2000                                    |

**Division/Group Assignment List (ICS 204 WF)**  
**Controlled Unclassified Information//Basic**

|   |         |   |   |  |                   |                  |
|---|---------|---|---|--|-------------------|------------------|
| <b>1. Incident Name:</b>  |         |   | <b>3.</b>                                   |  |                   |                  |
| CROCKETS KNOB   |         |   | <b>Branch:</b>                              | <b>Division/Group</b><br><br>G                     |                   |                  |
| <b>2. Operational Period: DAY</b>   |         |   |   |  |                   |                  |
| Date/Time From:<br>09/04/2022 0600      SUN   |         | Date/Time To:<br>09/04/2022 1800      SUN                   |   |  |                   |                  |
| <b>4. Operations Personnel</b>  |         |   |   |  |                   |                  |
| <b>OPERATIONS CHIEF</b>   |         | AARON ROWE; JEROMY WILSON (T)<br>KURT RANTA; CODY ACORD (T) |   | <b>DIVISION/GROUP SUPERVISOR</b> DJ GOLDSMITH      |                   |                  |
| <b>SAFETY OFFICER</b>   |         | TROY CORN; JACK CATES<br>ERIC MILLER (T)                    |   | <b>AIR OPERATIONS BRANCH DIRECTOR</b> PAUL BALFOUR |                   |                  |
| <b>5. Resources Assigned this Period</b>  |         |   |   |  |                   |                  |
| Strike Team / Task Force / Resource Designator  |         | LWD   | Leader                                      | Number Persons                                     | Drop Off PT./Time | Pick Up PT./Time |
| O-99 SOFR   |         | 09/12   | JEROME DRAZINSKI                            | 1  | BASE CAMP/0600    | BASE CAMP/1800   |
|   |         |   |   |  |                   |                  |
|   |         |   |   |  |                   |                  |
|   |         |   |   |  |                   |                  |
|   |         |   |   |  |                   |                  |
|   |         |   |   |  |                   |                  |
|   |         |   |   |  |                   |                  |
|   |         |   |   |  |                   |                  |
|   |         |   |   |  |                   |                  |
| <b>6. Control Operations/Work Assignments:</b>  |         |   |   |  |                   |                  |
| <p>TASK: Monitor fire growth beneath Indian Rock and Princess Trail to the junction of the Big Boulder trail. Scout spots east of lookout for containment options. Wrap Indian Rock Lookout.</p> <p>PURPOSE: Provide time to ensure appropriate action can be taken to prevent impacts to cultural and natural resources, remaining timber stands within the Summit Fire scar, and the Indian Rock Lookout.</p> <p>END STATE: Fire is contained southwest of main ridge using natural barriers and Princess Trail. Minimize growth of spot fires over main ridge.</p> |         |   |   |  |                   |                  |
| <b>7. Special Instructions:</b>   |         |   |   |  |                   |                  |
| Regional Saw Coordinators, Aaron Pedersen & Marc Cormier, will notify the DIVS when entering and leaving the Division.  |         |   |   |  |                   |                  |
| <b>8. Division/Group Communication Summary</b>  |         |   |   |  |                   |                  |
| Function  | Channel | RX Frequency N/W  | RX Tone/NAC                                 | TX Frequency N/W                                   | TX Tone/NAC       | Mode             |
| COMMAND   | 1       | 170.4250  | 131.8                                       | 168.0750   | 131.8             | A                |
| COMMAND   | 2       | 170.4125  | 131.8                                       | 165.9625   | 131.8             | A                |
| TACTICAL  | 7       | 166.7250  | 131.8                                       | 166.7250   | 131.8             | A                |
| AIR TO GROUND   | 13      | 167.0750  |   | 167.0750   |                   | A                |
| <b>9. Prepared By (Resource Unit Leader)</b>  |         |   | <b>Approved By (Planning Section Chief)</b> |  | <b>Date</b>       | <b>Time</b>      |
| JILL JOHNSON  |         |   | MARGE HUTCHINSON                            |  | 09/03/2022        | 1734             |



## Division/Group Assignment List (ICS 204 WF)

Controlled Unclassified Information//Basic

|   |         |   |   |                                       |                                |                  |
|---|---------|---|---|---------------------------------------|--------------------------------|------------------|
| <b>1. Incident Name:</b>  |         |   | <b>3.</b>                                   |                                       |                                |                  |
| CROCKETS KNOB   |         |   | <b>Branch:</b>                              |                                       | <b>Division/Group</b><br><br>M |                  |
| <b>2. Operational Period: DAY</b>   |         |   |   |                                       |                                |                  |
| Date/Time From:<br>09/04/2022 0600      SUN   |         | Date/Time To:<br>09/04/2022 1800      SUN                   |   |                                       |                                |                  |
| <b>4. Operations Personnel</b>  |         |   |   |                                       |                                |                  |
| <b>OPERATIONS CHIEF</b>   |         | AARON ROWE; JEROMY WILSON (T)<br>KURT RANTA; CODY ACORD (T) |   | <b>DIVISION/GROUP SUPERVISOR</b>      |                                | BRAD BRYANT      |
| <b>SAFETY OFFICER</b>   |         | TROY CORN; JACK CATES<br>ERIC MILLER (T)                    |   | <b>AIR OPERATIONS BRANCH DIRECTOR</b> |                                | PAUL BALFOUR     |
| <b>5. Resources Assigned this Period</b>  |         |   |   |                                       |                                |                  |
| Strike Team / Task Force /<br>Resource Designator   |         | LWD   | Leader                                      | Number<br>Persons                     | Drop Off PT./Time              | Pick Up PT./Time |
| O-61.83 SOF2  |         | 09/13   | TAIJA CORSO                                 | 1                                     | BASE CAMP/0600                 | BASE CAMP/1800   |
| C-4 CR2I GRAYBACK FORESTRY 13A  |         | 09/15   | CHARLES COFMAN                              | 20                                    | BASE CAMP/0600                 | BASE CAMP/1800   |
| E-14 UTV  |         |   | UNSTAFFED                                   |                                       | BASE CAMP/0600                 | BASE CAMP/1800   |
|   |         |   |   |                                       |                                |                  |
|   |         |   |   |                                       |                                |                  |
|   |         |   |   |                                       |                                |                  |
|   |         |   |   |                                       |                                |                  |
|   |         |   |   |                                       |                                |                  |
| <b>6. Control Operations/Work Assignments:</b>  |         |   |   |                                       |                                |                  |
| <p>TASK: Monitor fire growth beneath Indian Rock and Princess Trail to the junction of the Big Boulder trail. Scout spots east of lookout for containment options. Wrap Indian Rock Lookout.</p> <p>PURPOSE: Provide time to ensure appropriate action can be taken to prevent impacts to cultural and natural resources, remaining timber stands within the Summit Fire scar, and the Indian Rock Lookout.</p> <p>END STATE: Fire is contained southwest of main ridge using natural barriers and Princess Trail. Minimize growth of spot fires over main ridge.</p> |         |   |   |                                       |                                |                  |
| <b>7. Special Instructions:</b>   |         |   |   |                                       |                                |                  |
| <p>Notify Operations of fire growth across the Princess Trail.</p> <p>Regional Saw Coordinators, Aaron Pedersen &amp; Marc Cormier, will notify the DIVS when entering and leaving the Division.</p>  |         |   |   |                                       |                                |                  |
| <b>8. Division/Group Communication Summary</b>  |         |   |   |                                       |                                |                  |
| Function  | Channel | RX Frequency N/W  | RX Tone/NAC                                 | TX Frequency N/W                      | TX Tone/NAC                    | Mode             |
| COMMAND   | 1       | 170.4250  | 131.8                                       | 168.0750                              | 131.8                          | A                |
| COMMAND   | 2       | 170.4125  | 131.8                                       | 165.9625                              | 131.8                          | A                |
| TACTICAL  | 6       | 168.6000  | 131.8                                       | 168.6000                              | 131.8                          | A                |
| AIR TO GROUND   | 13      | 167.0750  |   | 167.0750                              |                                | A                |
| <b>9. Prepared By (Resource Unit Leader)</b>  |         |   | <b>Approved By (Planning Section Chief)</b> |                                       | <b>Date</b>                    | <b>Time</b>      |
| JILL JOHNSON  |         |   | MARGE HUTCHINSON                            |                                       | 09/03/2022                     | 2000             |

**Division/Group Assignment List (ICS 204 WF)**  
**Controlled Unclassified Information//Basic**

|   |         |   |   |  |                       |             |
|---|---------|---|---|--|-----------------------|-------------|
| <b>1. Incident Name:</b>                          |         |   |   | <b>3.</b>  |                       |             |
| CROCKETS KNOB                                     |         |   |   | <b>Branch:</b>                                     | <b>Division/Group</b> |             |
| <b>2. Operational Period: DAY</b>                 |         |   |   |  |                       |             |
| Date/Time From:<br>09/04/2022 0600      SUN       |         | Date/Time To:<br>09/04/2022 1800      SUN                   |   | <b>S / Z</b>                                       |                       |             |
| <b>4. Operations Personnel</b>                    |         |   |   |  |                       |             |
| <b>OPERATIONS CHIEF</b>                           |         | AARON ROWE; JEROMY WILSON (T)<br>KURT RANTA; CODY ACORD (T) |   | <b>DIVISION/GROUP SUPERVISOR</b> LARRY LEACH       |                       |             |
| <b>SAFETY OFFICER</b>                             |         | TROY CORN; JACK CATES<br>ERIC MILLER (T)                    |   | <b>AIR OPERATIONS BRANCH DIRECTOR</b> PAUL BALFOUR |                       |             |
| <b>5. Resources Assigned this Period</b>          |         |   |   |  |                       |             |
| Strike Team / Task Force /<br>Resource Designator | LWD     | Leader  | Number<br>Persons                           | Drop Off PT./Time                                  | Pick Up PT./Time      |             |
| O-98 SOFR   | 09/12   | CHRIS O'BRIEN   | 1   | BASE CAMP/0600                                     | BASE CAMP/1800        |             |
| O-11 TFLD   | 09/09   | JOSHUA WINKLER  | 1   | BASE CAMP/0600                                     | BASE CAMP/1800        |             |
| O-143 FOBS  | 09/15   | JAKE QUINTANA   | 1   | BASE CAMP/0600                                     | BASE CAMP/1800        |             |
| C-6 CR2I OR-MAF #401 **                           | 09/07   | GARY WHATLEY  | 25  | BASE CAMP/0600                                     | BASE CAMP/1800        |             |
| E-2 ENG4 GRAYBACK FORESTRY                        | 09/04   | JOHN RAY  | 3   | BASE CAMP/0600                                     | BASE CAMP/1800        |             |
| E-36 ENG6 AAA THUNDERBOLT FIRE SVC                | 09/08   | TOBY YAZZIE   | 3   | BASE CAMP/0600                                     | BASE CAMP/1800        |             |
| E-6 WTS2 STORM CARPENTER                          | 09/04   | CUB CARPENTER   | 2   | BASE CAMP/0600                                     | BASE CAMP/1800        |             |
| E-45 WTS2 OSBURN                                  | 09/13   | ALAN EWING  | 1   | BASE CAMP/0600                                     | BASE CAMP/1800        |             |
| E-46 WTS2 OVERPECK LOGGING                        | 09/10   | JOE MCCORMICK   | 1   | BASE CAMP/0600                                     | BASE CAMP/1800        |             |
| E-66 WTS2 1-A CONSTRUCTION                        | 09/10   | SHAWN STEWART   | 1   | BASE CAMP/0600                                     | BASE CAMP/1800        |             |
| E-91 WTS2 TRI-CO INC TENDER **                    | 09/13   | CHET HETTINGAL  | 1   | BASE CAMP/0600                                     | BASE CAMP/1800        |             |
| E-92 WTS2 JWS WILDFIRE                            | 09/13   | JOHN MCNEELY  | 1   | BASE CAMP/0600                                     | BASE CAMP/1800        |             |
| E-94 WTS2 GRAYBACK FORESTRY                       | 09/12   | CLIFFORD TEVEBAUGH  | 1   | BASE CAMP/0600                                     | BASE CAMP/1800        |             |
| E-64 GRD1 J & D LOGGING & CONTRACTING             | 09/16   | SAWYER LOGAN  | 2   | BASE CAMP/0600                                     | BASE CAMP/1800        |             |
| <b>8. Division/Group Communication Summary</b>    |         |   |   |  |                       |             |
| Function  | Channel | RX Frequency N/W  | RX Tone/NAC                                 | TX Frequency N/W                                   | TX Tone/NAC           | Mode        |
| COMMAND   | 1       | 170.4250  | 131.8                                       | 168.0750   | 131.8                 | A           |
| COMMAND   | 2       | 170.4125  | 131.8                                       | 165.9625   | 131.8                 | A           |
| TACTICAL  | 8       | 166.7750  | 131.8                                       | 166.7750   | 131.8                 | A           |
| AIR TO GROUND                                     | 13      | 167.0750  |   | 167.0750   |                       | A           |
| <b>9. Prepared By (Resource Unit Leader)</b>      |         |   | <b>Approved By (Planning Section Chief)</b> |  | <b>Date</b>           | <b>Time</b> |
| JILL JOHNSON                                      |         |   | MARGE HUTCHINSON                            |  | 09/03/2022            | 2000        |

**Division/Group Assignment List (ICS 204 WF)**  
**Controlled Unclassified Information//Basic**

|  |         |   |   |                                       |                       |                  |
|--|---------|---|---|---------------------------------------|-----------------------|------------------|
| <b>1. Incident Name:</b>   |         |   | <b>3.</b>                                   |                                       |                       |                  |
| CROCKETS KNOB  |         |   | <b>Branch:</b>                              |                                       | <b>Division/Group</b> |                  |
| <b>2. Operational Period:</b> DAY  |         |   | <b>S / Z</b>                                |                                       |                       |                  |
| Date/Time From:<br>09/04/2022 0600      SUN  |         | Date/Time To:<br>09/04/2022 1800      SUN                   |   |                                       |                       |                  |
| <b>4. Operations Personnel</b>   |         |   |   |                                       |                       |                  |
| <b>OPERATIONS CHIEF</b>  |         | AARON ROWE; JEROMY WILSON (T)<br>KURT RANTA; CODY ACORD (T) |   | <b>DIVISION/GROUP SUPERVISOR</b>      |                       | LARRY LEACH      |
| <b>SAFETY OFFICER</b>  |         | TROY CORN; JACK CATES<br>ERIC MILLER (T)                    |   | <b>AIR OPERATIONS BRANCH DIRECTOR</b> |                       | PAUL BALFOUR     |
| <b>5. Resources Assigned this Period</b>   |         |   |   |                                       |                       |                  |
| Strike Team / Task Force / Resource Designator   |         | LWD   | Leader                                      | Number Persons                        | Drop Off PT./Time     | Pick Up PT./Time |
| O-9 REMS SPFN 9  |         | 09/06   | MATTHEW TURNER                              | 4                                     | BASE CAMP/0600        | BASE CAMP/1800   |
| E-51 AMBU 2  |         | 09/12   | JERRY SINICA                                | 2                                     | BASE CAMP/0600        | BASE CAMP/1800   |
|  |         |   |   |                                       |                       |                  |
|  |         |   |   |                                       |                       |                  |
| <b>6. Control Operations/Work Assignments:</b>   |         |   |   |                                       |                       |                  |
| <p>TASK: Secure and mop-up dozer line and 436 Road. Continue securing direct line north towards H-265. Secure additional spots north of H-265.</p> <p>PURPOSE: Prevent additional fire spread into Badger Creek that may have future impact to private property, cultural, natural and timber values.</p> <p>END STATE: Fire is contained east of 4550 road and north of Badger Creek.</p>   |         |   |   |                                       |                       |                  |
| <b>7. Special Instructions:</b>  |         |   |   |                                       |                       |                  |
| <p>Engines and tenders may NOT draft directly from natural water sources, such as creeks. Drafting will occur only from Fold-a-tanks.</p> <ul style="list-style-type: none"> <li>· If Initial Attack occurs within the TFR, John Day Dispatch will coordinate with appropriate duty officer and contact Field Ops for response.</li> <li>· Field Operations will contact IA Group Supervisor and or Air Operations to coordinate response to new start.</li> <li>· Local forest Initial Attack frequencies will be used and provided in the IAP Communications Plan</li> <li>· The same process will be used for fires outside of TFR if assistance from Crockets Knob fire resources is requested.</li> </ul> <p>Regional Saw Coordinators, Aaron Pedersen &amp; Marc Cormier, will notify the DIVS when entering and leaving the Division.</p> |         |   |   |                                       |                       |                  |
| <b>8. Division/Group Communication Summary</b>   |         |   |   |                                       |                       |                  |
| Function   | Channel | RX Frequency N/W  | RX Tone/NAC                                 | TX Frequency N/W                      | TX Tone/NAC           | Mode             |
| COMMAND  | 1       | 170.4250  | 131.8                                       | 168.0750                              | 131.8                 | A                |
| COMMAND  | 2       | 170.4125  | 131.8                                       | 165.9625                              | 131.8                 | A                |
| TACTICAL   | 8       | 166.7750  | 131.8                                       | 166.7750                              | 131.8                 | A                |
| AIR TO GROUND  | 13      | 167.0750  |   | 167.0750                              |                       | A                |
| <b>9. Prepared By (Resource Unit Leader)</b>   |         |   | <b>Approved By (Planning Section Chief)</b> |                                       | <b>Date</b>           | <b>Time</b>      |
| JILL JOHNSON   |         |   | MARGE HUTCHINSON                            |                                       | 09/03/2022            | 2000             |

**Division/Group Assignment List (ICS 204 WF)**  
**Controlled Unclassified Information//Basic**

|   |         |   |   |                                       |                       |                  |
|---|---------|---|---|---------------------------------------|-----------------------|------------------|
| <b>1. Incident Name:</b>                          |         |   | <b>3.</b>                                   |                                       |                       |                  |
| CROCKETS KNOB                                     |         |   | <b>Branch:</b>                              |                                       | <b>Division/Group</b> |                  |
| <b>2. Operational Period:</b> DAY                 |         |   | <b>CONTINGENCY</b>                          |                                       |                       |                  |
| Date/Time From:<br>09/04/2022 0600      SUN       |         | Date/Time To:<br>09/04/2022 1800      SUN                   |   |                                       |                       |                  |
| <b>4. Operations Personnel</b>                    |         |   |   |                                       |                       |                  |
| <b>OPERATIONS CHIEF</b>                           |         | AARON ROWE; JEROMY WILSON (T)<br>KURT RANTA; CODY ACORD (T) |   | <b>DIVISION/GROUP SUPERVISOR</b>      |                       | EZRA BUTTERFIELD |
| <b>SAFETY OFFICER</b>                             |         | TROY CORN; JACK CATES<br>ERIC MILLER (T)                    |   | <b>AIR OPERATIONS BRANCH DIRECTOR</b> |                       | PAUL BALFOUR     |
| <b>5. Resources Assigned this Period</b>          |         |   |   |                                       |                       |                  |
| Strike Team / Task Force /<br>Resource Designator |         | LWD   | Leader                                      | Number<br>Persons                     | Drop Off PT./Time     | Pick Up PT./Time |
| O-130 TFLD (T)                                    |         | 09/11   | TIMOTHY WAGNER                              | 1                                     | BASE CAMP/0600        | BASE CAMP/1800   |
| O-15 HEQB **                                      |         | 09/05   | AARON KIENZLE                               | 1                                     | BASE CAMP/0600        | BASE CAMP/1800   |
| O-20 HEQB (T) **                                  |         | 09/06   | DUANE STOKES                                | 1                                     | BASE CAMP/0600        | BASE CAMP/1800   |
| C-19 CRW2 WILLAMETTE VLY REFOREST CR 3            |         | 09/12   | LAZARO MONTANO                              | 20                                    | BASE CAMP/0600        | BASE CAMP/1800   |
| C-20 CRW2 TORRES CONTR CR6                        |         | 09/11   | MARCA MARTINEZ                              | 20                                    | BASE CAMP/0600        | BASE CAMP/1800   |
| E-78 ENG6 AQUAFORCE E204                          |         | 09/11   | TYLER GILMORE                               | 3                                     | BASE CAMP/0600        | BASE CAMP/1800   |
| E-7 DZR2 COUGAR RIDGE CONSTR **                   |         | 09/05   | DAVE OAKS                                   | 2                                     | BASE CAMP/0600        | BASE CAMP/1800   |
| E-34 MBM1 EAGLE CAP FORESTRY                      |         | 09/10   | BEN FISCHER                                 | 2                                     | BASE CAMP/0600        | BASE CAMP/1800   |
| E-30 CHP2 GRAYBACK FORESTRY                       |         | 09/08   | JOSH MINER                                  | 3                                     | BASE CAMP/0600        | BASE CAMP/1800   |
| E-96 CHP1 THE ROAD HOME                           |         | 09/12   | SAM BONADOR                                 | 3                                     | BASE CAMP/0600        | BASE CAMP/1800   |
| E-97 CHP1 WYEAST FORESTRY MGMT                    |         | 09/12   | ERIC NELSON                                 | 3                                     | BASE CAMP/0600        | BASE CAMP/1800   |
| E-13 UTV KD OUTDOORS                              |         |   | UNSTAFFED                                   |                                       | BASE CAMP/0600        | BASE CAMP/1800   |
| O-95 EMPF MEDIC 3 ADVENTURE MEDICS                |         | 09/12   | MICHAEL COOPER                              | 1                                     | BASE CAMP/0600        | BASE CAMP/1800   |
| <b>8. Division/Group Communication Summary</b>    |         |   |   |                                       |                       |                  |
| Function  | Channel | RX Frequency N/W  | RX Tone/NAC                                 | TX Frequency N/W                      | TX Tone/NAC           | Mode             |
| COMMAND   | 1       | 170.4250  | 131.8                                       | 168.0750                              | 131.8                 | A                |
| COMMAND   | 2       | 170.4125  | 131.8                                       | 165.9625                              | 131.8                 | A                |
| TACTICAL  | 7       | 166.7250  | 131.8                                       | 166.7250                              | 131.8                 | A                |
| AIR TO GROUND                                     | 13      | 167.0750  |   | 167.0750                              |                       | A                |
| <b>9. Prepared By (Resource Unit Leader)</b>      |         |   | <b>Approved By (Planning Section Chief)</b> |                                       | <b>Date</b>           | <b>Time</b>      |
| JILL JOHNSON                                      |         |   | MARGE HUTCHINSON                            |                                       | 09/03/2022            | 2000             |

**Division/Group Assignment List (ICS 204 WF)**  
**Controlled Unclassified Information//Basic**

|  |         |   |   |                                       |                       |                  |
|--|---------|---|---|---------------------------------------|-----------------------|------------------|
| <b>1. Incident Name:</b>   |         |   | <b>3.</b>                                   |                                       |                       |                  |
| CROCKETS KNOB  |         |   | <b>Branch:</b>                              |                                       | <b>Division/Group</b> |                  |
| <b>2. Operational Period:</b> DAY  |         |   | <b>CONTINGENCY</b>                          |                                       |                       |                  |
| Date/Time From:<br>09/04/2022 0600   | SUN     | Date/Time To:<br>09/04/2022 1800                            |   |                                       |                       |                  |
| <b>4. Operations Personnel</b>   |         |   |   |                                       |                       |                  |
| <b>OPERATIONS CHIEF</b>  |         | AARON ROWE; JEROMY WILSON (T)<br>KURT RANTA; CODY ACORD (T) |   | <b>DIVISION/GROUP SUPERVISOR</b>      |                       | EZRA BUTTERFIELD |
| <b>SAFETY OFFICER</b>  |         | TROY CORN; JACK CATES<br>ERIC MILLER (T)                    |   | <b>AIR OPERATIONS BRANCH DIRECTOR</b> |                       | PAUL BALFOUR     |
| <b>5. Resources Assigned this Period</b>   |         |   |   |                                       |                       |                  |
| Strike Team / Task Force /<br>Resource Designator  | LWD     | Leader  | Number<br>Persons                           | Drop Off PT./Time                     | Pick Up PT./Time      |                  |
|  |         |   |   |                                       |                       |                  |
|  |         |   |   |                                       |                       |                  |
|  |         |   |   |                                       |                       |                  |
| <b>6. Control Operations/Work Assignments:</b>   |         |   |   |                                       |                       |                  |
| <p>TASK: Continue prepping the 4555 Road and Sunrise Butte Trail. Move machinery to begin prep in other contingency lines.<br/> PURPOSE: Prevent Fire growth to the East/Southeast that impacts private property, cultural, natural, and timber values.<br/> END STATE: Fire is contained west of 4555 Road and the Sunrise Butte trail.</p>   |         |   |   |                                       |                       |                  |
| <b>7. Special Instructions:</b>  |         |   |   |                                       |                       |                  |
| <p>Engines and tenders may NOT draft directly from natural water sources, such as creeks. Drafting will occur only from fold-a-tanks.</p> <ul style="list-style-type: none"> <li>If Initial Attack occurs within the TFR, John Day Dispatch will coordinate with appropriate duty officer and contact Field Ops for response.</li> <li>Field Operations will contact IA Group Supervisor and or Air Operations to coordinate response to new start.</li> <li>Local forest Initial Attack frequencies will be used and provided in the IAP Communications Plan</li> <li>The same process will be used for fires outside of TFR if assistance from Crockets Knob fire resources is requested.</li> </ul> |         |   |   |                                       |                       |                  |
| <b>8. Division/Group Communication Summary</b>   |         |   |   |                                       |                       |                  |
| Function   | Channel | RX Frequency N/W  | RX Tone/NAC                                 | TX Frequency N/W                      | TX Tone/NAC           | Mode             |
| COMMAND  | 1       | 170.4250  | 131.8                                       | 168.0750                              | 131.8                 | A                |
| COMMAND  | 2       | 170.4125  | 131.8                                       | 165.9625                              | 131.8                 | A                |
| TACTICAL   | 7       | 166.7250  | 131.8                                       | 166.7250                              | 131.8                 | A                |
| AIR TO GROUND  | 13      | 167.0750  |   | 167.0750                              |                       | A                |
| <b>9. Prepared By (Resource Unit Leader)</b>   |         |   | <b>Approved By (Planning Section Chief)</b> |                                       | <b>Date</b>           | <b>Time</b>      |
| JILL JOHNSON   |         |   | MARGE HUTCHINSON                            |                                       | 09/03/2022            | 2000             |

**Division/Group Assignment List (ICS 204 WF)**  
**Controlled Unclassified Information//Basic**

|   |         |   |   |                                       |                       |                  |
|---|---------|---|---|---------------------------------------|-----------------------|------------------|
| <b>1. Incident Name:</b>  |         |   | <b>3.</b>                                   |                                       |                       |                  |
| CROCKETS KNOB   |         |   | <b>Branch:</b>                              |                                       | <b>Division/Group</b> |                  |
| <b>2. Operational Period:</b> DAY   |         |   | <b>STRUCTURE / IA</b>                       |                                       |                       |                  |
| Date/Time From:<br>09/04/2022 0600      SUN   |         | Date/Time To:<br>09/04/2022 1800      SUN                   |   |                                       |                       |                  |
| <b>4. Operations Personnel</b>  |         |   |   |                                       |                       |                  |
| <b>OPERATIONS CHIEF</b>   |         | AARON ROWE; JEROMY WILSON (T)<br>KURT RANTA; CODY ACORD (T) |   | <b>DIVISION/GROUP SUPERVISOR</b>      |                       | JIM WALKOWSKI    |
| <b>SAFETY OFFICER</b>   |         | TROY CORN; JACK CATES<br>ERIC MILLER (T)                    |   | <b>AIR OPERATIONS BRANCH DIRECTOR</b> |                       | PAUL BALFOUR     |
| <b>5. Resources Assigned this Period</b>  |         |   |   |                                       |                       |                  |
| Strike Team / Task Force /<br>Resource Designator   |         | LWD   | Leader                                      | Number<br>Persons                     | Drop Off PT./Time     | Pick Up PT./Time |
| ALASKA STRIKE TEAM  |         |   |   |                                       | BASE CAMP /0600       | BASE CAMP/1800   |
| O-119 TFLD  |         | 09/07   | BRITTANY STILLIE                            | 1                                     | BASE CAMP /0600       | BASE CAMP/1800   |
| E-86.1 TFLD (T)   |         | 09/07   | ROBIN ACE                                   | 1                                     | BASE CAMP /0600       | BASE CAMP/1800   |
| E-82 ENG6 AK-KKS K-62   |         | 09/07   | DAN WHITE                                   | 3                                     | BASE CAMP /0600       | BASE CAMP/1800   |
| E-83 ENG6 FAIRBANKS-65  |         | 09/07   | MATT NUNNELLY                               | 3                                     | BASE CAMP /0600       | BASE CAMP/1800   |
| E-84 ENG6 FAIRBANKS-66  |         | 09/07   | ROBERT WALLACE                              | 3                                     | BASE CAMP /0600       | BASE CAMP/1800   |
| E-85 ENG6 FAIRBANKS-67  |         | 09/07   | LAURA LUND                                  | 3                                     | BASE CAMP /0600       | BASE CAMP/1800   |
| E-86 ENG6 DOF M-68  |         | 09/07   | JOE SHAW                                    | 3                                     | BASE CAMP /0600       | BASE CAMP/1800   |
| E-112 ENG ODF E-9262  |         | 09/13   | AARON KIDWELL                               | 2                                     | BASE CAMP /0600       | BASE CAMP/1800   |
| <b>6. Control Operations/Work Assignments:</b>  |         |   |   |                                       |                       |                  |
| <p>Contingency Group:<br/> TASK: Scout for contingency lines beyond current containment lines.<br/> PURPOSE: To establish secondary lines of defense that would prevent impact to values if current primary lines are compromised.<br/> END STATE: Contingency lines identified and established if needed outside of primary containment lines.</p> |         |   |   |                                       |                       |                  |
| <b>8. Division/Group Communication Summary</b>  |         |   |   |                                       |                       |                  |
| Function  | Channel | RX Frequency N/W  | RX Tone/NAC                                 | TX Frequency N/W                      | TX Tone/NAC           | Mode             |
| COMMAND   | 1       | 170.4250  | 131.8                                       | 168.0750                              | 131.8                 | A                |
| COMMAND   | 2       | 170.4125  | 131.8                                       | 165.9625                              | 131.8                 | A                |
| TACTICAL  | 9       | 168.2500  | 131.8                                       | 168.2500                              | 131.8                 | A                |
| TACTICAL  | 11      | 168.3125  | 131.8                                       | 168.3125                              | 131.8                 | A                |
| AIR TO GROUND   | 12      | 167.3750  |   | 167.3750                              |                       | A                |
| AIR TO GROUND   | 13      | 167.0750  |   | 167.0750                              |                       | A                |
| <b>9. Prepared By (Resource Unit Leader)</b>  |         |   | <b>Approved By (Planning Section Chief)</b> |                                       | <b>Date</b>           | <b>Time</b>      |
| JILL JOHNSON  |         |   | MARGE HUTCHINSON                            |                                       | 09/03/2022            | 2000             |

**Division/Group Assignment List (ICS 204 WF)**  
**Controlled Unclassified Information//Basic**

|  |         |   |   |                                       |                       |               |
|--|---------|---|---|---------------------------------------|-----------------------|---------------|
| <b>1. Incident Name:</b>   |         |   | <b>3.</b>                                   |                                       |                       |               |
| CROCKETS KNOB  |         |   | <b>Branch:</b>                              |                                       | <b>Division/Group</b> |               |
| <b>2. Operational Period:</b> DAY  |         |   | <b>STRUCTURE / IA</b>                       |                                       |                       |               |
| Date/Time From:<br>09/04/2022 0600      SUN  |         | Date/Time To:<br>09/04/2022 1800      SUN                   |   |                                       |                       |               |
| <b>4. Operations Personnel</b>   |         |   |   |                                       |                       |               |
| <b>OPERATIONS CHIEF</b>  |         | AARON ROWE; JEROMY WILSON (T)<br>KURT RANTA; CODY ACORD (T) |   | <b>DIVISION/GROUP SUPERVISOR</b>      |                       | JIM WALKOWSKI |
| <b>SAFETY OFFICER</b>  |         | TROY CORN; JACK CATES<br>ERIC MILLER (T)                    |   | <b>AIR OPERATIONS BRANCH DIRECTOR</b> |                       | PAUL BALFOUR  |
| <b>6. Control Operations/Work Assignments:</b>   |         |   |   |                                       |                       |               |
| <p>Structure Group:<br/> TASK: Assess structures and infrastructure that could be impacted by fire spread and develop structure defense plan. Identify structure needs and coordinate with OSFM liaison and ODF to determine structure defense resources available.<br/> PURPOSE: To prepare structures and private property values along the Highway 20 corridor and in the vicinity of the fire for impact from fire.<br/> END STATE: Structures and private property along the Highway 20 corridor and in the vicinity of the fire are assessed and defensible. Suppression activities to prevent fire impact to private property has occurred.</p> <p>IA Group:<br/> TASK: Follow IA response plan to provide IA response with identified resources for new fire starts within TFR.<br/> PURPOSE: To support initial attack response capability for the Malheur and Umatilla NFs.<br/> END STATE: Prompt and efficient mobilization of identified IA resources to new fire starts.</p> |         |   |   |                                       |                       |               |
| <b>7. Special Instructions:</b>  |         |   |   |                                       |                       |               |
| <ul style="list-style-type: none"> <li>· If Initial Attack occurs within the TFR, John Day Dispatch will coordinate with appropriate duty officer and contact Field Ops for response.</li> <li>· Field Operations will contact IA Group Supervisor and or Air Operations to coordinate response to new start.</li> <li>· Local forest Initial Attack frequencies will be used and provided in the IAP Communications Plan</li> <li>· The same process will be used for fires outside of TFR if assistance from Crockets Knob fire resources is requested.</li> </ul> <p>Engines and tenders may NOT draft directly from natural water sources, such as creeks. Drafting will occur only from Fold-a-tanks.</p>   |         |   |   |                                       |                       |               |
| <b>8. Division/Group Communication Summary</b>   |         |   |   |                                       |                       |               |
| Function   | Channel | RX Frequency N/W  | RX Tone/NAC                                 | TX Frequency N/W                      | TX Tone/NAC           | Mode          |
| COMMAND  | 1       | 170.4250  | 131.8                                       | 168.0750                              | 131.8                 | A             |
| COMMAND  | 2       | 170.4125  | 131.8                                       | 165.9625                              | 131.8                 | A             |
| TACTICAL   | 9       | 168.2500  | 131.8                                       | 168.2500                              | 131.8                 | A             |
| TACTICAL   | 11      | 168.3125  | 131.8                                       | 168.3125                              | 131.8                 | A             |
| AIR TO GROUND  | 12      | 167.3750  |   | 167.3750                              |                       | A             |
| AIR TO GROUND  | 13      | 167.0750  |   | 167.0750                              |                       | A             |
| <b>9. Prepared By (Resource Unit Leader)</b>   |         |   | <b>Approved By (Planning Section Chief)</b> |                                       | <b>Date</b>           | <b>Time</b>   |
| JILL JOHNSON   |         |   | MARGE HUTCHINSON                            |                                       | 09/03/2022            | 2000          |

**AIR OPERATIONS SUMMARY**

**PREPARED BY: Paul Balfour**

**PREPARED DATE/TIME: September 3, 1800hrs**

|                                       |   |
|---------------------------------------|---|
| <b>INCIDENT NAME</b><br>Crockets Knob | <b>2. OPERATIONAL PERIOD:</b><br>Date: 9/4/2022      Helibase Start Time: 0800 End Time: 2000      Sunrise: 0621 Sunset: 2000 CTL<br>(Times valid for John Day PDT) |
|---------------------------------------|---|

|   |   |   |
|---|---|---|
| <p><b>3. REMARKS (Safety Notes, Hazards, Air Operations Special Equipment, etc.):</b><br/>General Aviation, See &amp; Avoid<br/>YOU will be working in a complex fire environment, ensure YOU understand the Fire Traffic Area (FTA) Protocols. (12nm initial call, 7nm contact must be made prior to entering FTA)</p> <p>Bucket work, Retardant drops: ensure area is clear of ground personnel before dropping; watch for wires; be aware of potential for turbulence at ridge tops, saddles, canyons, etc<br/>*** BE AWARE OF FATIGUE, TAKE LONGER BREAKS WHEN FLYING IN SMOKEY CONDITIONS.<br/>*** Report all TFR intrusions to Air Operations, Air Support or Helibase as soon as possible.</p> | <p><b>4. MEDEVAC A/C:</b><br/>Order thru ATGS or JDIDC<br/><b>EMS Rotor A/G:</b><br/>VMED29 155.3475 Tx/Rx,<br/>Tone 156.7 Tx/Rx<br/>38HX COMM: A/A Primary<br/>A/G Primary</p> | <p><b>5. TFR #2/8108 &amp; 2/8109</b><br/>Surface to 11,000' MSL<br/>7NM Radius</p> |
|---|---|---|

| 6. PERSONNEL                        | LWD | Phone        | 7. FREQUENCIES       |                   |                   | 8. FIXED-WING      | # Avail / Type/ Make-Model / FAA N# / Base(s)                            |
|-------------------------------------|-----|--------------|----------------------|-------------------|-------------------|--------------------|--|
|                                     |     |              | AIR/AIR Primary      | AM                | FM                |                    |  |
| AOBD: Paul Balfour<br>O-61.43       |     | 509-993-8739 | AIR/AIR Secondary    | 123.6250<br>(A8)  |                   | Fixed Wing/Buckets | DIVS order thru ATGS if up, or Communications                            |
| ASGS: Tim Lyda<br>O- 61.44      9/8 |     | 541-761-2676 | AIR/GRD Primary      | 128.2250<br>(A39) | 167.0750<br>(A11) | ATGS Aircraft      | (A-2) N3NT AC690D Jeremy Cowie or Relief Rob Rosetti                     |
| HEBM: Tyler Davis (T) 9/7           |     | 360-220-5359 | AIR/GRD Secondary    |                   | 169.7125<br>(A41) |                    | LATs Order through Air Attack/AOBD<br>Or JDIDC                           |
| HEMG:                               |     |              | AIR/GRD IA Primary   |                   | 167.3750          |                    |  |
| ATGS: Jeremy Cowie                  |     | 541-575-3736 | AIR/GRD IA Secondary |                   | 168.6375          |                    |  |
| ATGS:                               |     |              | UNICOM               | 122.800           |                   | NOTES:             | Grant Co Regional Airport, Haley Walker<br>541-575-1151 or 530-567-5987  |
| JDIDC:                              |     | 541-575-3110 | DECK                 | 163.1000          |                   |                    | email cost: <a href="mailto:jdairbase@gmail.com">jdairbase@gmail.com</a> |
|                                     |     |              |                      |                   |                   |                    |  |

**9. HELICOPTERS**

| FAA N# | TY | MAKE/MODEL    | BASE     | START | AVAIL | REMARKS                                  | FAA N# | TY | MAKE/MODEL | BASE     | START | AVAIL | REMARKS     |
|--------|----|---------------|----------|-------|-------|--|--------|----|------------|----------|-------|-------|-------------|
| 519FF  | 3  | A Star B3     | John Day | 0800  | 0830  | A-13, Helitack ,Medivac Buckets          | 462WY  | 1  | CH-46      | John Day | 0800  | 0830  | A-7 Bucket  |
| 38HX   | 3  | AS-350 A Star | Baker    | 0800  | 0830  | A-63 Short Haul/Buckets                  | 448JS  | 1  | S-61       | John Day | 0800  | 0830  | A-22 Bucket |
| 17HX   | 2  | Bell 205++    | John Day | 0800  | 0830  | A-102 Buckets/Helitack Crew 10 personnel | 625CK  | 1  | S-61       | John Day | 0800  | 0830  | Tanked A-62 |
|        |    |               |          |       |       |  | 83BH   | 1  | UH-60      | John Day | 0800  | 0830  | Bucket A-29 |
|        |    |               |          |       |       |  |        |    |            |          |       |       |             |



# INCIDENT RADIO COMMUNICATIONS PLAN (ICS 205)

Controlled Unclassified Information//Basic

|                          |                                |   |   |
|--------------------------|--------------------------------|---|---|
| <b>1. Incident Name:</b> | <b>2. Date/Time Prepared:</b>  | <b>3. Operational Period: DAY</b>           |   |
| CROCKETS KNOB            | Date: 09/03/2022<br>Time: 2000 | Date/Time From:<br>09/04/2022 0600      SUN | Date/Time To:<br>09/04/2022 1800      SUN |

**4. Basic Radio Channel Use:**

| Zone Group | Ch # | Function      | Channel Name/Trunked Radio System Talkgroup | Assignment      | RX Freq  | RX Tone/NAC | TX Freq  | TX Tone/NAC | Mode (A,D, or M) | Remarks                     |
|------------|------|---------------|---|-----------------|----------|-------------|----------|-------------|------------------|-----------------------------|
|            | 1    | COMMAND       | CMD 1                                       | ALL DIVS        | 170.4250 | 131.8       | 168.0750 | 131.8       | A                | NORTH - INDIAN ROCK LO      |
|            | 2    | COMMAND       | CMD 2                                       | ALL DIVS        | 170.4125 | 131.8       | 165.9625 | 131.8       | A                | SOUTH - DIXIE BUTTE LO      |
|            | 3    | COMMAND       | CMD 3                                       | ALL DIVS        | 171.5375 | 131.8       | 166.3625 | 131.8       | A                | RESERVED FOR FUTURE USE     |
|            | 4    | TACTICAL      | TAC 4                                       | DIV A           | 168.0500 | 131.8       | 168.0500 | 131.8       | A                |                             |
|            | 5    | TACTICAL      | TAC 5                                       | DIV E           | 168.2000 | 131.8       | 168.2000 | 131.8       | A                |                             |
|            | 6    | TACTICAL      | TAC 6                                       | DIV M           | 168.6000 | 131.8       | 168.6000 | 131.8       | A                |                             |
|            | 7    | TACTICAL      | TAC 7                                       | DIV G / CONTING | 166.7250 | 131.8       | 166.7250 | 131.8       | A                | DIVISION G / CONTINGENCY    |
|            | 8    | TACTICAL      | TAC 8                                       | DIV S / Z       | 166.7750 | 131.8       | 166.7750 | 131.8       | A                | DIVISION S / Z              |
|            | 9    | TACTICAL      | TAC 9                                       | STRUCTURE / IA  | 168.2500 | 131.8       | 168.2500 | 131.8       | A                | STRUCTURE / IA              |
|            | 10   | COMMAND       | N DIXIE                                     | ALL DIVS        | 172.4000 | 131.8       | 166.2000 | 123.0       | A                | IA / BACKUP IF CMD NET INOP |
|            | 11   | TACTICAL      | MAF TAC                                     | IA              | 168.3125 | 131.8       | 168.3125 | 131.8       | A                | IA ONLY                     |
|            | 12   | AIR TO GROUND | A/G 38                                      | MALHEUR         | 167.3750 |             | 167.3750 |             | A                | A/G FOR MALHEUR N.F.        |
|            | 13   | AIR TO GROUND | A/G PRI                                     | ALL DIVS        | 167.0750 |             | 167.0750 |             | A                | AIR OPS ONLY                |
|            | 15   | AIR TO GROUND | VMED 29                                     | ALL DIVS        | 155.3475 | 156.7       | 155.3475 | 156.7       | A                | MEDICAL EVAC ONLY           |
|            | 14   | AIR TO GROUND | A/G SEC                                     | ALL DIVS        | 169.7125 |             | 169.7125 |             | A                | AIR OPS ONLY                |
|            | 16   | AIR GUARD     | AIRGUARD                                    | ALL DIVS        | 168.6250 |             | 168.6250 | 110.9       | A                | EMERGENCY AIR OPS ONLY      |

**5. Special Instructions:** COMMUNICATIONS (208) 891-8093

|   |                    |                                |
|---|--------------------|--------------------------------|
| <b>6. Prepared By</b><br>(Communications Unit Leader) | Name: MISSY PARKER | Signature: <i>Missy Parker</i> |
| ICS 205   | IAP Page           | Date/Time: 09/03/2022 2000     |

Controlled Unclassified Information//Basic

# THREE DAY DEMOB LIST

Sunday 9-4-22

## OVERHEAD

|         |      |        |                  |
|---------|------|--------|------------------|
| O-61.36 | 0800 | (DIVS) | WOODALL, RICHARD |
| O-76    | 0800 | (DIVS) | VERDUZCO, FIDEL  |

Monday 9-5-22

## EQUIPMENT

|     |      |        |                   |
|-----|------|--------|-------------------|
| E-3 | 0800 | (ENG6) | GRAYBACK FORESTRY |
|-----|------|--------|-------------------|

## OVERHEAD

|      |      |        |                  |
|------|------|--------|------------------|
| O-35 | 0700 | (HMGB) | JONES, SHANNON   |
| O-14 | 1830 | (HEQB) | SCHULZ, NICHOLAS |
| O-15 | 1845 | (HEQB) | KIENZLE, AARON C |
| O-21 | 1900 | (TFLD) | CEARNS, MICHAEL  |
| O-13 | 1915 | (PIOF) | WOOD, COURTNEY   |
| O-1  | 2000 | (FMOD) | PETTYJOHN        |
| O-3  | 2015 | (FMOD) | WEBB             |

Tuesday 9-6-22

## EQUIPMENT

|      |      |        |                          |
|------|------|--------|--------------------------|
| E-18 | 0645 | (ENG4) | AAA THUNDERBOLT FIRE SVC |
| E-7  | 0700 | (DZR2) | COUGAR RIDGE CONSTR D2   |
| E-17 | 0730 | (DZR2) | J & D LOGGING & CONTR    |

## OVERHEAD

|       |      |        |                          |
|-------|------|--------|--------------------------|
| O-110 | 0600 | (PIO2) | JOHNSON, EMERY ELIZABETH |
| O-27  | 0630 | (REAF) | MONZULLA, RYAN A         |

### Crocketts Knob Fire DEMOB Procedures

1. Complete CTRs and follow Finance IAP Message.
2. Return any checked-out equipment and/or radios.
3. All Contractors complete Ground Support inspection at Taylor Flats.
4. ALL VEHICLES MUST GO THROUGH THE WEED WASH LOCATED JUST WEST OF PRAIRIE CITY – FOLLOW SIGNAGE.
5. Contact DEMOB at 509-432-6143 to finalize process.  
DEMOB Email: 2022.crockettsknob.demob@firenet.gov

**NOTE: All air travelers need to contact DEMOB to make arrangements 72 hours prior to departure.**





# **Crockets Knob Fire Information 541-625-0892**



[2022.crocketsknob@firenet.gov](mailto:2022.crocketsknob@firenet.gov)

<https://www.facebook.com/CrocketsKnobFire>

<https://inciweb.nwccg.gov/incident/8355/>

## **Talking Points**

- The Crockets Knob fire is being controlled using a Full Suppression Strategy with Public and Firefighter Safety and value protection as top priorities.
- Firefighters have been using mapping technology to accurately locate and identify structures, values, and hazards that may be impacted by the fire as well as landmarks that may be useful in fighting the fire.



# Human Resource Message

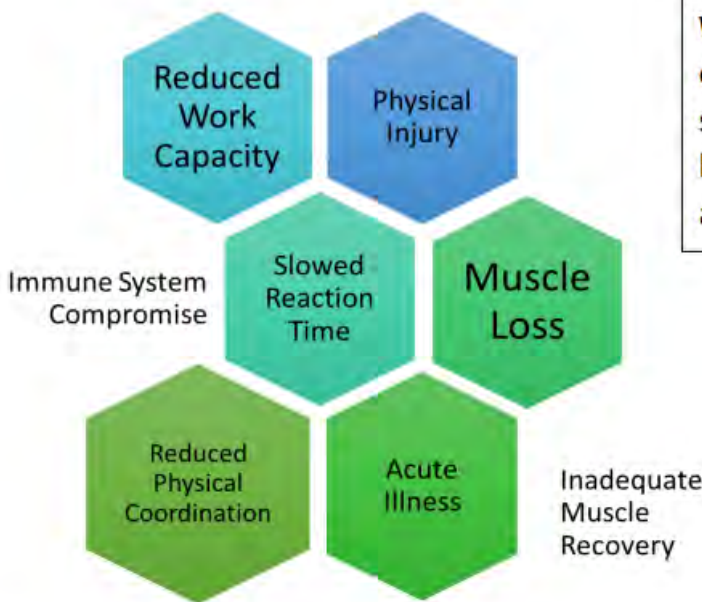


## Crocketts Knob Fire – September 4, 2022

### Fatigue & Recovery – How do you spend your R&R?

#### Fatigue without adequate recovery

- reduced work capacity
- reduced performance, such as a reduced ability to do task or job
- weight loss (muscle loss)
- Injury (muscle, tendon, ligament, etc.)
- reduced physical coordination
- increased risk acute illness (cold / flu)



What are your habits around eating, drinking, working, and sleeping? Do they contribute to healthy recovery between assignments?

#### More Resources

Follow the QR code for access the 6 Minutes for Safety on Fatigue and Stress information

[Fatigue & Stress | NWCC](#)



When fatigued, we also lose patience which adds to our stress. We need to power down, set a routine, and get adequate rest. Sleep deprivation makes our moods worse and adds to our anxiety. Try to reset your nighttime routine and include deep breathing exercises before bed.

**Susie Manezes - NW-Team 12- (HRSP) Contact Number: 208-739-0255**

**Jon Tipton – NW Team 12 - (HRSP) Contact Number: 971-347-7314**



# **Logistics Message Crockets Knob Fire**

**ICP @ 740 Overholt St, Prairie City Oregon 97869**

**Lead Medical Unit Diana Braun Phone 509-348-0091 or by Radio on CMD Channel**

**Communications: Crockets Knob ICP**  
24-Hours  
Phone: **208-891-8093**

**Meal Service Hours:** Breakfast/Lunch at 0700  
Dinner at 1800

**\*\* Note:** Meal count changes need to be submitted to BCMG Tully Pritchett  
4 hours prior to delivery time.

**Shower Hours:** 0430 to 1200  
1400 to 2130

**Ordering:** 0700-2100

**Email:** [Steven.Huang@dnr.wa.gov](mailto:Steven.Huang@dnr.wa.gov)

**\*\*NOTE:** General Messages need separated by O#, E#, and C# request with fire name at top of page. Please include: Point of Contact, Report To, Date & Time needed. Name requests must have justification with minimum 48-hour reporting.

---

## **Taylor Flats Base Camp**

**4.5 miles North of Hwy 26 and Hwy 7 Junction on Hwy 7**

**Supply: 0630-2130**

direct cache orders

call or text Jeremy Marquardt at 360-880-4244

or

email [jeremy.marquardt@DNR.WA.GOV](mailto:jeremy.marquardt@DNR.WA.GOV)

**Meals:** Breakfast 0500-0900; Dinner 1800-2200

**Showers:** 0500-1200 and 1600-2200

**Ground Support:** 0600-2130

**Medical Support :** 0530-2130



# Finance Message



Finance Email: [2022.crocketsknob.finance@firenet.gov](mailto:2022.crocketsknob.finance@firenet.gov)

SUBJECT: *Include Key Word* **TIME** for Overhead, Crews & Cooperators

SUBJECT: *Include Key Word* **EQUIPMENT** for Contract Resources

## Finance Contact Numbers

PERSONNEL: 509-823-6642

EQUIPMENT: 208-890-4869

Finance Section Chief: 509-423-6011

Please Scan this QR code to send all required documents to finance or use the email below



**FINANCE CHECK IN:** [2022.crocketsknob.finance@firenet.gov](mailto:2022.crocketsknob.finance@firenet.gov)

PLEASE ENSURE THE BELOW DOCUMENTS ARE EMAILED

| Overhead, Crews & Cooperator Resources  | Contract Resources  |
|---|---|
| <ul style="list-style-type: none"> <li>• <b>Check-In:</b> Crew Manifest, Cooperative Agreement (if applies), AD Hire Letter, Resource Order</li> <li>• <b>Daily:</b> Crew Time Report (CTR), Shift Tickets</li> <li>• <b>Demob:</b> Signed OF288, Final Equipment Use Invoice (Cooperator) If you don't have a way to sign you must come to finance.</li> </ul> | <ul style="list-style-type: none"> <li>• <b>Check-In:</b> Resource Order, Contract/VIPR Agreement (make sure you have your UEI, Pre-Inspection</li> <li>• <b>Daily:</b> Shift Tickets, receipts (fuel issues, claims, etc.)</li> <li>• <b>Demob:</b> Contractor Evaluations, Final Shift Tickets and receipt(s) for Addition/Deductions, Post-Inspection, Final Signed Invoices If you don't have a way to sign you must come to finance</li> </ul> |

## REMINDERS

- ★ PLEASE ENSURE YOU INCLUDE LOCATION OF WHERE YOU ARE WORKING (BRANCH OR DIVISION) ON CTR OR SHIFT TICKET. **MAKE SURE C OR E # IS ON THE CTR OR SHIFT TICKET**
- ★ PLEASE SHOW YOUR LUNCH BREAK
- ★ PLEASE USE MILITARY TIME (0001-2400)
- ★ WHEN CLAIMING HAZARD PAY YOU MUST INCLUDE THE SUPPRESSION ACTION BEING PERFORMED. THIS INCLUDES OPERATIONS WHICH DIRECTLY SUPPORT CONTROL OF FIRE (E.G., ACTIVITIES TO EXTINGUISH THE FIRE, FIREFIGHTING, GROUND SCOUTING, SPOT FIRE PATROLLING, SEARCH AND RESCUE OPERATIONS, AND BACKFIRING).

**The following resources need to contact Finance by**

**Calling: PERSONNEL: 509-823-6642**

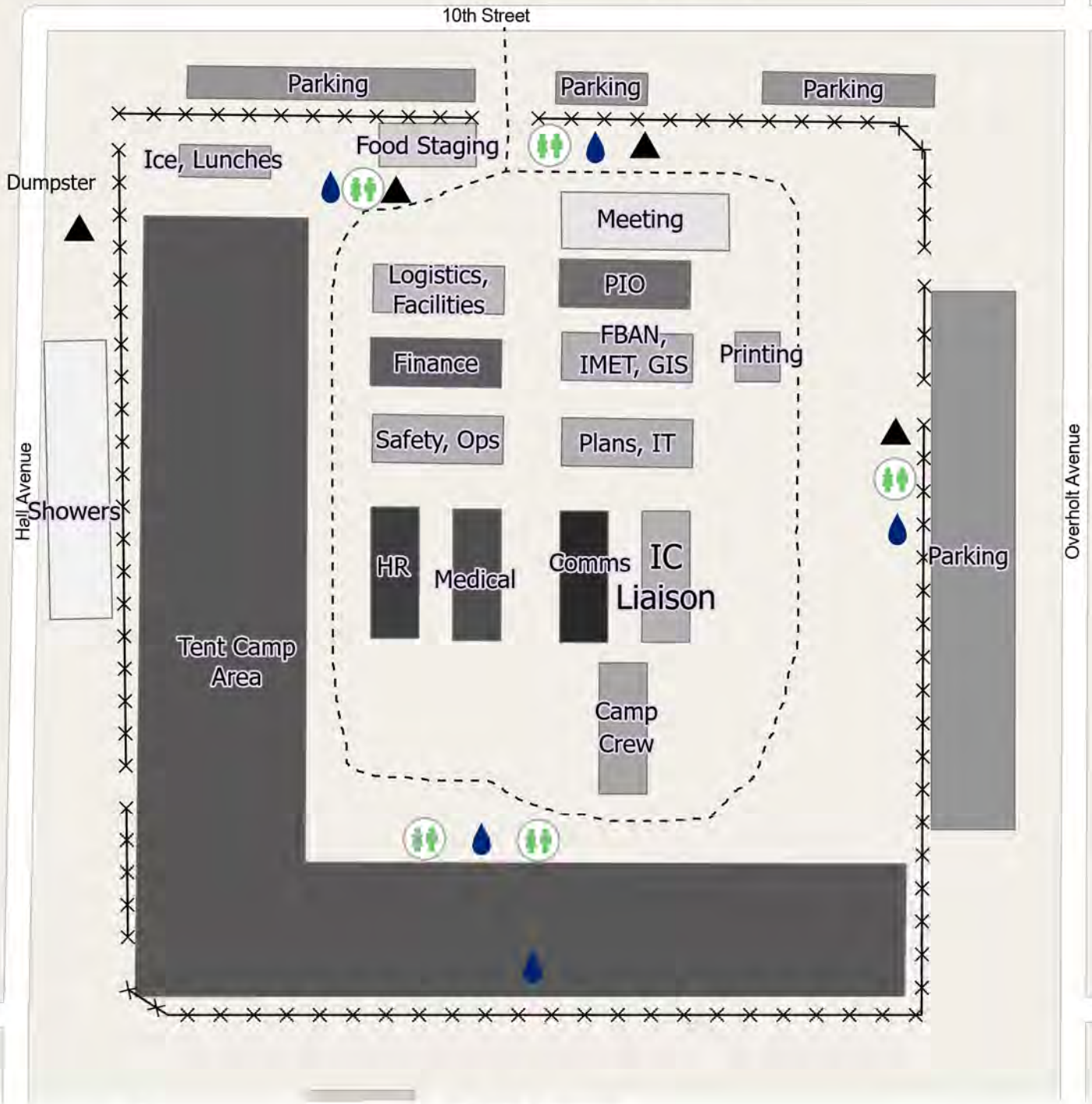
**EQUIPMENT: 208-890-4869**

|  |  |  |  |
|--|--|--|--|
|  |  |  |  |
|  |  |  |  |
|  |  |  |  |
|  |  |  |  |
|  |  |  |  |
|  |  |  |  |
|  |  |  |  |
|  |  |  |  |
|  |  |  |  |
|  |  |  |  |
|  |  |  |  |
|  |  |  |  |
|  |  |  |  |
|  |  |  |  |
|  |  |  |  |
|  |  |  |  |
|  |  |  |  |
|  |  |  |  |
|  |  |  |  |
|  |  |  |  |
|  |  |  |  |
|  |  |  |  |
|  |  |  |  |
|  |  |  |  |
|  |  |  |  |
|  |  |  |  |
|  |  |  |  |
|  |  |  |  |
|  |  |  |  |

**ALL RESOURCES ARE ALLOWED TO USE THE FUEL TRUCK.**

**CONTRACTOR WILL NEED TO PAY WITH CREDIT CARD**

**DNR RESOURCES NEED TO PROVIDE THE VEHICLE NUMBER ON THE FRONT OR BACK BUMPER OF YOUR VEHICLE**



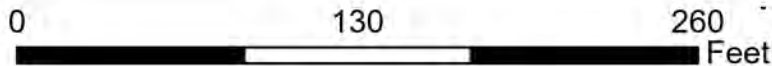
### ICP Camp

Crockets Knob  
OR-MAF-022199  
9/4/2022

### Camp Features

-  Handwashing Station
-  Toilet
-  Trash
-  Fenceline
-  Service Road

Devin Scheid



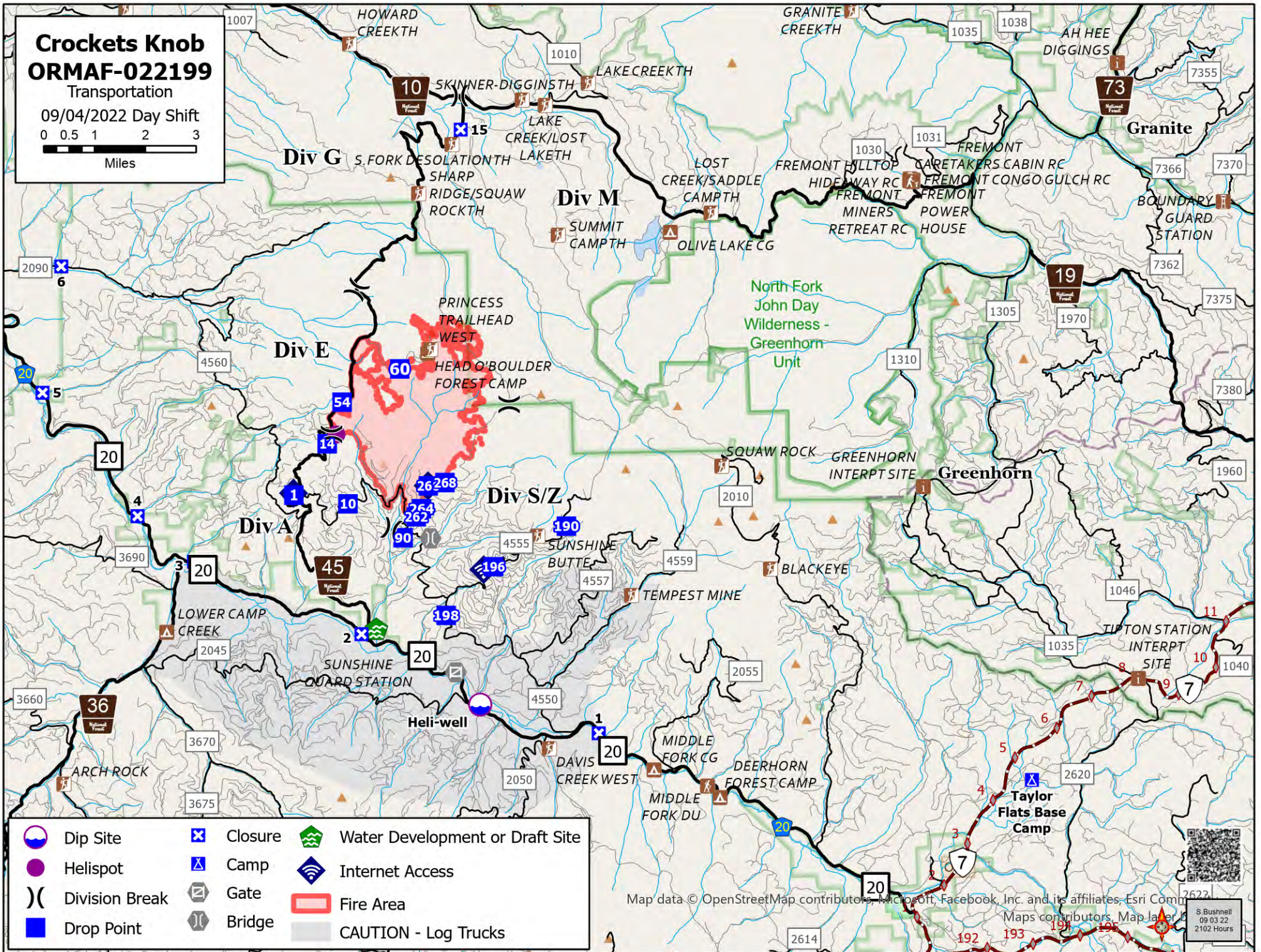


# Crocketts Knob ORMAF-022199

Transportation

09/04/2022 Day Shift

0 0.5 1 2 3



- |  |  |  |
|--|--|--|
|  |  |  |
|  |  |  |
|  |  |  |
|  |  |  |

Map data © OpenStreetMap contributors, Microsoft, Facebook, Inc. and its affiliates, Esri Company, and other contributors. Map data © S. Bushnell 09/03/22 2102 Hours

118°49.5'W 118°48.5'W 118°47.5'W 118°46.5'W 118°45.5'W 118°44.5'W 118°43'W 118°42'W 118°41'W 118°40'W 118°39'W 118°38'W 118°37'W 118°36.01'W 118°35'W 118°34'W 118°33'W

# Crocketts Knob ORMAF-022199 IAP Map

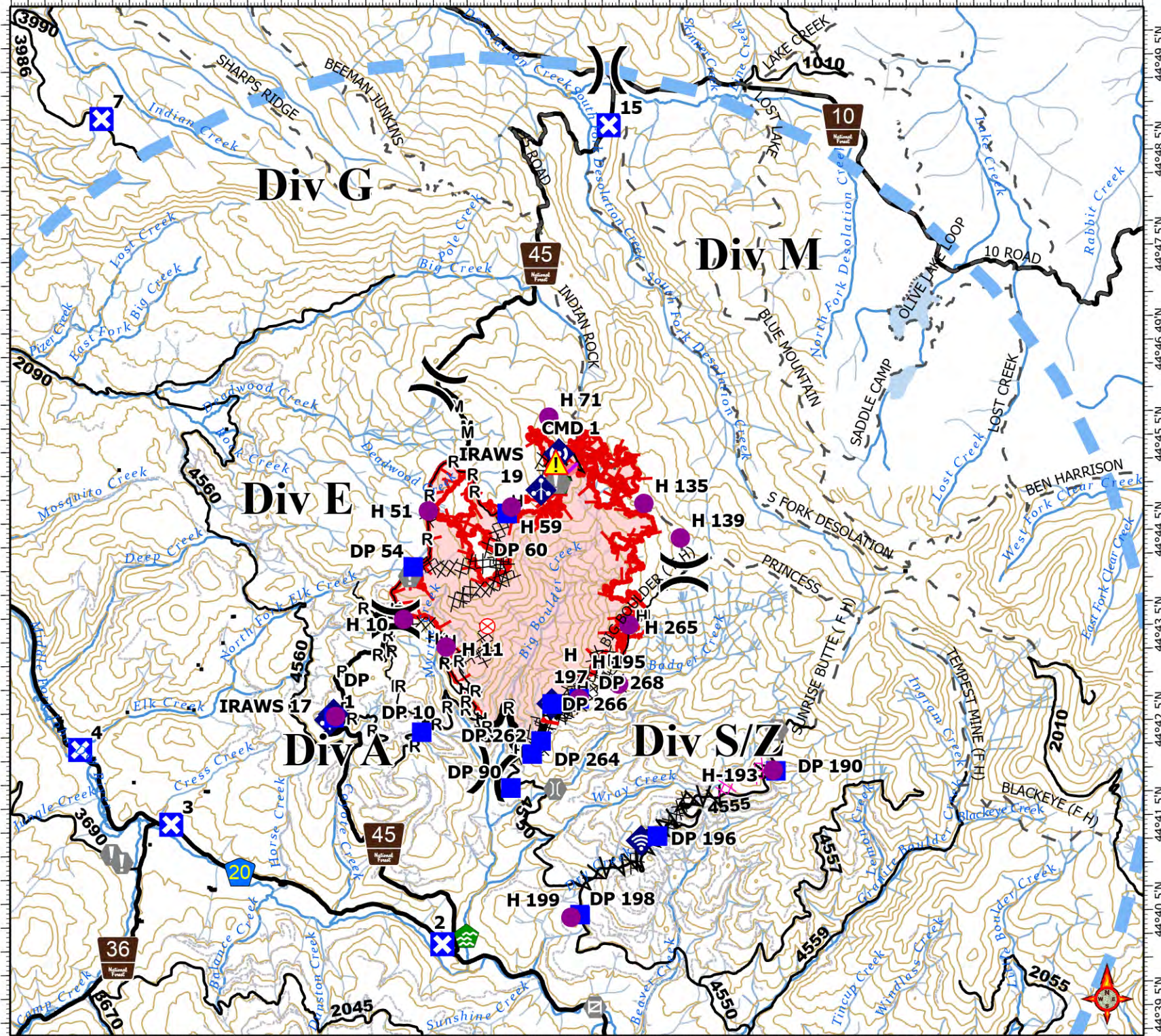
09/04/2022 Day Shift  
4136 acres at 09/02/2022 @ 2319

- Dip Site
- Helispot
- Division Break
- Drop Point
- Closure
- Fire Origin
- Value at Risk
- Gate
- Bridge
- Water Development or Draft Site
- Resource Location
- Mobile Weather Unit
- Internet Access
- Repeater
- Hazard
- Completed Dozer Line
- Completed Fuel Break
- Completed Hand Line
- Completed Mixed Construction Line
- Completed Road as Line
- Planned Dozer Line
- Retardant Drop
- Temporary Flight Restriction
- Fire Edge (Field Collection)
- Contained
- Uncontained
- Fire Area



S. Bushnell  
09 03 22  
2105 Hours

Acres from IR and sketch  
Datum: North American 1983



118°49.5'W 118°48.5'W 118°47.5'W 118°46.5'W 118°45.5'W 118°44.5'W 118°43'W 118°42'W 118°41'W 118°40'W 118°39'W 118°38'W 118°37'W 118°36.01'W 118°35'W 118°34'W

# Coordinate Table

| FC Point Type         | Label                  | Latitude WGS84 DDM | Longitude WGS84 DDM |
|-----------------------|------------------------|--------------------|---------------------|
| Camp                  | Taylor Flats Base Camp | 44° 37.492' N      | 118° 27.375' W      |
| Closure               | 1                      | 44° 38.473' N      | 118° 37.716' W      |
| Closure               | 15                     | 44° 48.847' N      | 118° 40.688' W      |
| Closure               | 2                      | 44° 40.261' N      | 118° 43.341' W      |
| Closure               | 3                      | 44° 41.562' N      | 118° 47.318' W      |
| Closure               | 4                      | 44° 42.362' N      | 118° 48.647' W      |
| Closure               | 5                      | 44° 44.507' N      | 118° 50.862' W      |
| Closure               | 6                      | 44° 46.660' N      | 118° 50.349' W      |
| Closure               | 7                      | 44° 48.997' N      | 118° 48.192' W      |
| Closure               | 8                      | 44° 51.052' N      | 118° 48.674' W      |
| Dip Site              | Heli-well              | 44° 39.010' N      | 118° 40.536' W      |
| Drop Point            | DP 1                   | 44° 42.662' N      | 118° 44.886' W      |
| Drop Point            | DP 10                  | 44° 42.495' N      | 118° 43.594' W      |
| Drop Point            | DP 190                 | 44° 42.027' N      | 118° 38.372' W      |
| Drop Point            | DP 196                 | 44° 41.363' N      | 118° 40.138' W      |
| Drop Point            | DP 198                 | 44° 40.550' N      | 118° 41.299' W      |
| Drop Point            | DP 262                 | 44° 42.246' N      | 118° 41.967' W      |
| Drop Point            | DP 264                 | 44° 42.383' N      | 118° 41.834' W      |
| Drop Point            | DP 266                 | 44° 42.770' N      | 118° 41.659' W      |
| Drop Point            | DP 268                 | 44° 42.820' N      | 118° 41.260' W      |
| Drop Point            | DP 54                  | 44° 44.234' N      | 118° 43.682' W      |
| Drop Point            | DP 60                  | 44° 44.781' N      | 118° 42.280' W      |
| Drop Point            | DP 90                  | 44° 41.893' N      | 118° 42.291' W      |
| Helispot              | H-193                  | 44° 42.035' N      | 118° 38.409' W      |
| Helispot              | H 10                   | 44° 43.684' N      | 118° 43.835' W      |
| Helispot              | H 11                   | 44° 43.387' N      | 118° 43.214' W      |
| Helispot              | H 135                  | 44° 44.863' N      | 118° 40.257' W      |
| Helispot              | H 139                  | 44° 44.494' N      | 118° 39.727' W      |
| Helispot              | H 15                   | 44° 42.675' N      | 118° 44.864' W      |
| Helispot              | H 195                  | 44° 42.968' N      | 118° 40.675' W      |
| Helispot              | H 197                  | 44° 42.820' N      | 118° 41.260' W      |
| Helispot              | H 199                  | 44° 40.523' N      | 118° 41.434' W      |
| Helispot              | H 265                  | 44° 43.588' N      | 118° 40.508' W      |
| Helispot              | H 51                   | 44° 44.821' N      | 118° 43.445' W      |
| Helispot              | H 59                   | 44° 44.848' N      | 118° 42.216' W      |
| Helispot              | H 71                   | 44° 45.787' N      | 118° 41.642' W      |
| Incident Command Post | Prairie City           | 44° 27.285' N      | 118° 42.554' W      |
| Internet Access       |                        | 44° 42.720' N      | 118° 41.769' W      |
| Internet Access       |                        | 44° 42.698' N      | 118° 44.894' W      |
| Internet Access       |                        | 44° 41.317' N      | 118° 40.378' W      |



## COVID-19 Mitigations for Crockets Knob Fire

- Masks are not required indoors unless working in a county with a HIGH COVID-19 community level. Currently, Grant County community level is MODERATE (masking indoors is optional).
- Conduct daily verbal screening checks within crews, report any COVID-like symptoms to your direct supervisor. Supervisors should report any positive symptoms to the Medical Unit for next steps.
- Observe social distancing standards while waiting in line for food and limit contact with others outside of your crew in the food service line. If possible, send crew representatives to pick up meals.
- Practice good personal hygiene, wash hands frequently and disinfect high-traffic areas on a regular basis.
- Limit close contact between firefighters and the public as much as possible to prevent exposure and spread.





# EMERGENCY PLAN INCIDENT WITHIN AN INCIDENT

## ON SCENE INCIDENT COMMANDER

In the event of an accident or medical incident of any size, your primary responsibility is to ENSURE that the victim(s) receive prompt and effective Triage, Treatment, Extrication and Transport.

- **ENSURE THE MEDICAL INCIDENT REPORT IN THE INCIDENT ACTION PLAN IS BEING USED AND FOLLOWED- \*IF DETERMINED TO BE A GREEN, DO NOT DECLARE EMERGENCY TRAFFIC AND ONLY COMPLETE LINE 1-4 ON MIR\*.**
- Conduct size-up of the incident nature of accident, number type of resources involved, latitude and longitude location (DD°MMM.MM format): notify incident communications center and supervisor, request assistance as needed.
- Order and coordinate medical and support response to the accident.
- Evaluate special needs (law enforcement, haz mat, etc.).
- Clear the command frequency if medical emergency, coordinate with incident communications and air attack for air medical transportation needs.
- Preserve and photograph the scene for accident investigation.
- Remain aware of surroundings and the status of the main incident (delegate personnel to monitor the main fire) to ensure safety of medical treatment personnel.
- Until relieved, supervise and manage all personnel involved at the incident scene.

# MEDICAL PLAN (ICS 206 WF)

| Incident/Project Name                                    |   | 1. Operational Period           |   |  |              |                    |    |                               |
|--|---|---------------------------------|---|--|--------------|--------------------|----|-------------------------------|
| Crockets Knob  |   | September 4, 2022<br>0600-1800  |   |  |              |                    |    |                               |
| 2. Ambulance Services                                    |   |                                 |   |  |              |                    |    |                               |
| Name   | Complete Address  | Phone                           | Advanced Life Support (ALS)                             |  |              |                    |    |                               |
|  |   |                                 | Yes   | No   |              |                    |    |                               |
| Blue Mountain Ambulance                                  | 170 Ford Rd<br>John Day, OR   | Command/911                     | X   |  |              |                    |    |                               |
| 3. Air Ambulance Services                                |   |                                 |   |  |              |                    |    |                               |
| Name   | Phone   | Location                        |   |  |              |                    |    |                               |
| Life Flight Network                                      | Command/911   | 20-30 min flight - LaGrande, OR |   |  |              |                    |    |                               |
| Life Flight Network                                      | Command/911   | Pendleton, OR                   |   |  |              |                    |    |                               |
| 4. Hospitals   |   |                                 |   |  |              |                    |    |                               |
| Name<br>Complete Address                                 | Coordinate Standard<br>Degrees Decimal Minutes<br>DD° MM.MMM' N - Lat<br>DD° MM.MMM' W - Long |                                 | Travel Time<br>From<br>Crockett's<br>Knob<br>Air<br>Gnd |  | Phone        | Helipad<br>Yes No  |    | Level<br>of Care<br>Facility  |
|  | Lat:  | Long:                           |   |  |              | Yes                | No |                               |
| Blue Mountain Hospital<br>170 Ford Rd<br>John Day, OR    | 44°25.06' N   | 118°57.60' W                    | 20 mins   | 1.5 hrs  | 541-575-1311 | X                  |    | Level 4                       |
|  |   |                                 |   |  |              |                    |    |                               |
| St Charles Medical Center<br>2500 NE Neff Rd<br>Bend, OR | 44°4.1667' N  | 121°16.0833' W                  | 1 hr  | 4 hrs  | 541-882-6311 | X                  |    | Level 2                       |
|  |   |                                 |   |  |              |                    |    |                               |
| Legacy Emanuel<br>2801 N Gantenbien,<br>Portland, OR     | 45°32.616' N  | 122°6695' W                     | 2 hrs   | 5 hrs  | 503-413-4321 | X                  |    | Level 1 Trauma<br>Burn Center |
|  |   |                                 |   |  |              |                    |    |                               |
| 5. Division<br>Branch<br>Group                           | Capability  |                                 |   | Personnel  |              |                    |    |                               |
| Div. A   |   |                                 |   | (E-27) Ambo 1<br>(O-96) Medic 4<br>(O-93) Medic 2    |              |                    |    |                               |
| Div. E   |   |                                 |   | (O-94) Medic 1<br>(O-7) EMT<br>(E-87) Blackwoods REM |              |                    |    |                               |
| Div. M   |   |                                 |   | Utilize nearest medical resource                     |              |                    |    |                               |
| Div. S/Z   |   |                                 |   | (O-9) REM 9<br>(E-51) Ambo 2                         |              |                    |    |                               |
| G  |   |                                 |   | Unstaffed  |              |                    |    |                               |
| Contingency  |   |                                 |   | (O-95) Medic 3                                       |              |                    |    |                               |
| Taylor Flats/Bates<br>SP                                 |   |                                 |   | (E-88) Ambo 3  |              |                    |    |                               |
| 6. Prepared By (Medical Unit Leader)                     |   | 7. Date/Time                    | 8. Reviewed By (Safety Officer)                         |  |              | 9. Date/Time       |    |                               |
| Diana Braun  |   | 09/03/2022<br>1800              | Jack Cates<br><i>Jack Cates</i>                         |  |              | 09/03/2022<br>1800 |    |                               |

# Short-Haul Operations

## CAPABILITIES

- During an operational Short-Haul the helicopter is capable of inserting Short-Haulers into an area with tight canopy cover and/or technical terrain.
- Haul line lengths range from 100 feet to 350 feet.
- Short hauler and/or medical gear can be delivered to the medical scene even if extraction by short-haul is not necessary.

## ORDERING

- EMT or Medical Incident IC determines medical extraction is required.
- Follow local established procedures and/or Medical Incident Report (MIR) in the IRPG.
- Confirm aircraft type, call sign, estimated time of arrival and frequency.
- Give site selection information when ordering: hazards (i.e. ash, smoke, snags, aerial), tree height, terrain, and patient transport configuration (supine or seated position). Repeat hazards and give updated weather conditions as well as brief patient update to responding helicopter.

**PROCESS:** The helicopter will fly to the coordinates provided. They will make contact with ground personnel on scene with the patient using an identified air-to-ground frequency. The helicopter will complete a short-haul recon and size up, gather patient update information and then fly to a landing zone (LZ) to configure for short-haul operations. The helicopter will be monitoring the appropriate air-to-ground, air guard and victor frequencies. From this point, ground resources should only contact the helicopter in case of an emergency. During the insertion and extraction process ground personnel must be clear of the area.

## ON SCENE: EXPECT THE FOLLOWING

- 1 or 2 rescuers (at least one qualified as an EMT or higher)
- Backboard (if needed and not already on scene)
- All equipment necessary for patient extraction

The Patient Extraction Bag accommodates most backboards.  
-A patient on a backboard, TRS, SKED or litter will be inserted into the bag.



The Seat Harness is used for patients not requiring the use of a backboard.



IAP INSERT



# MEDICAL PLAN (ICS 206 WF)

Controlled Unclassified Information//Basic

## Medical Incident Report

**FOR A NON-EMERGENCY INCIDENT, WORK THROUGH CHAIN OF COMMAND TO REPORT AND TRANSPORT INJURED PERSONNEL AS NECESSARY.**

**FOR A MEDICAL EMERGENCY: IDENTIFY ON SCENE INCIDENT COMMANDER BY NAME AND POSITION AND ANNOUNCE "MEDICAL EMERGENCY" TO INITIATE RESPONSE FROM IMT COMMUNICATIONS/DISPATCH.**

Use the following items to communicate situation to communications/dispatch.

1. CONTACT COMMUNICATIONS / DISPATCH (**Verify correct frequency prior to starting report**)

*Ex: "Communications, Div. Alpha. Stand-by for Emergency Traffic."*

2. INCIDENT STATUS: *Provide incident summary (including number of patients) and command structure.*

*Ex: "Communications, I have a Red priority patient, unconscious, struck by a falling tree. Requesting air ambulance to Forest Road 1 at (Lat./Long.) This will be the Trout Meadow Medical, IC is TFLD Jones. EMT Smith is providing medical care."*

|   |   |   |
|---|---|---|
| Severity of Emergency / Transport Priority        | <input type="checkbox"/> RED / PRIORITY 1 Life or limb threatening injury or illness. Evacuation need is IMMEDIATE<br><i>Ex: Unconscious, difficulty breathing, bleeding severely, 2° – 3° burns more than 4 palm sizes, heat stroke, disoriented.</i><br><input type="checkbox"/> YELLOW / PRIORITY 2 Serious Injury or illness. Evacuation may be DELAYED if necessary.<br><i>Ex: Significant trauma, unable to walk, 2° – 3° burns not more than 1-3 palm sizes.</i><br><input type="checkbox"/> GREEN / PRIORITY 3 Minor Injury or illness. Non-Emergency transport<br><i>Ex: Sprains, strains, minor heat-related illness.</i> |   |
| Nature of Injury or Illness & Mechanism of Injury |   | <i>Brief Summary of Injury or Illness<br/>(Ex: Unconscious, Struck by Falling Tree)</i> |
| Transport Request                                 |   | <i>Air Ambulance / Short Haul/Hoist<br/>Ground Ambulance / Other</i>                    |
| Patient Location                                  |   | <i>Descriptive Location &amp; Lat. / Long. (WGS84)</i>                                  |
| Incident Name                                     |   | <i>Geographic Name + "Medical"<br/>(Ex: Trout Meadow Medical)</i>                       |
| On-Scene Incident Commander                       |   | <i>Name of on-scene IC of Incident within an Incident (Ex: TFLD Jones)</i>              |
| Patient Care                                      |   | <i>Name of Care Provider<br/>(Ex: EMT Smith)</i>  |

3. INITIAL PATIENT ASSESSMENT: *Complete this section for each patient as applicable (start with the most severe patient)*

Patient Assessment: See IRPG page 106

Treatment:

4. TRANSPORT PLAN:

Evacuation Location (if different): *(Descriptive Location (drop point, intersection, etc.) or Lat. / Long.)* Patient's ETA to Evacuation Location:

Helispot / Extraction Site Size and Hazards:

5. ADDITIONAL RESOURCES / EQUIPMENT NEEDS:

*Example: Paramedic/EMT, Crews, Immobilization Devices, AED, Oxygen, Trauma Bag, IV/Fluid(s), Splints, Rope rescue, Wheeled litter, HAZMAT, Extrication*

6. COMMUNICATIONS: Identify State Air/Ground EMS Frequencies and Hospital Contacts as applicable

| Function    | Channel Name/Number | Receive (RX) | Tone/NAC * | Transmit (TX) | Tone/NAC * |
|-------------|---------------------|--------------|------------|---------------|------------|
| COMMAND     |                     |              |            |               |            |
| AIR-TO-GRND |                     |              |            |               |            |
| TACTICAL    |                     |              |            |               |            |

7. CONTINGENCY: **Considerations:** *If primary options fail, what actions can be implemented in conjunction with primary evacuation method? Be thinking ahead.*

8. ADDITIONAL INFORMATION: *Updates/Changes, etc.*

**REMEMBER:** Confirm ETA's of resources ordered. Act according to your level of training. Be Alert. Keep Calm. Think Clearly. Act Decisively.

Controlled Unclassified Information//Basic