

CROCKETS KNOB

Operational Period — 0600 to 1800

Monday, September 5th, 2022



Crockets Knob Fire



SCAN QR CODE
For
BRIEFING LINK
DOWNLOAD IAP
DOWNLOAD MAPS
Send in **PHOTOS**
CHECK-IN
Submit **TIME** to **FINANCE**

OR-MAF-022199

P6 P0XK (0604)
221 IWR

INCIDENT ACTION PLAN


This page intentionally left blank.



INCIDENT OBJECTIVES (ICS 202)

1. Incident Name:	2. Operational Period: DAY	
CROCKETS KNOB	Date/Time From: 09/05/2022 0600 MON	Date/Time To: 09/05/2022 1800 MON
3. Objective(s):		
<ul style="list-style-type: none"> • Identify, evaluate and reduce risks to firefighters and the public through the use of Deliberate Risk Assessment process. • Minimize acres burned and impacts to communities and infrastructure by completing a strategic risk assessment to guide operations in the development of strategies and tactics to be implemented by fire personnel. • Protect tribal, cultural, aquatic and wildlife resources, and sensitive plant sites. • Provide Initial Attack response and assistance for private and public lands within the delegated area. • Maintain and enhance relationships with cooperators, stake holders, landowners, and communities by providing accurate and timely information. • Manage cost commensurate with values at risk and maintain fiscal accountability. • Treat each other with dignity and respect and act in a professional manner while on the fire and in the community. • Ensure COVID-19 best management practices are in place and follow local CDC guidelines. 		
4. Operational Period Command Emphasis:		
Implement strategies and tactics to achieve incident objectives with the least amount of risk practical and the highest probability of success.		
General Situational Awareness:		
Fighting fire in light flashy fuels under hot, dry, and windy conditions poses great potential for rapid fire growth. Anticipate changes in fire behavior before it happens and ensure Lookouts, Communications, Escape Routes, and Safety Zones are adequate. Maintain accountability of all assigned resources while engaged on the fire line.		
5. Site Safety Plan Required? Yes <input type="checkbox"/> No <input checked="" type="checkbox"/>		
Approved Site Safety Plan(s) Located		
6. Incident Action Plan (the items checked below are included in this Incident Action Plan):		
<input checked="" type="checkbox"/> ICS 202 <input checked="" type="checkbox"/> ICS 203 <input checked="" type="checkbox"/> ICS 204 <input checked="" type="checkbox"/> ICS 205 <input type="checkbox"/> ICS 205A <input checked="" type="checkbox"/> ICS 206	<input type="checkbox"/> ICS 207 <input type="checkbox"/> ICS 208 <input checked="" type="checkbox"/> ICS 220 <input checked="" type="checkbox"/> Map/Chart <input checked="" type="checkbox"/> Weather Forecast/Tides/Currents	Other Attachments: <input checked="" type="checkbox"/> HR MESSAGE <input checked="" type="checkbox"/> UNIT LOG <input type="checkbox"/> _____ <input type="checkbox"/> _____
7. Prepared by: MARGE HUTCHINSON	Position/Title: PSC2	Signature: <i>Marge Hutchinson</i>
8. Approved by Incident Commander:	Name: JEFF DIMKE	Signature: <i>Jeff Dimke</i>
ICS 202	IAP Page	Date/Time: 09/04/2022 2000

ORGANIZATION ASSIGNMENT LIST (ICS 203)

1. Incident Name:		2. Operational Period: DAY	
CROCKETS KNOB		Date/Time From: 09/05/2022 0600 MON	Date/Time To: 09/05/2022 1800 MON
3. Incident Commander(s) and Command Staff:			
IC/UC	JEFF DIMKE JEFF BOUSCHOR (T)	SUPPLY UNIT	JOHN KAUPA THAD FRATER (T)
DEPUTY	BOB SHINDELAR	GROUND SUPPORT UNIT	DAVE HARSH
SAFETY OFFICER	TROY CORN; JACK CATES ERIC MILLER (T)	COMMUNICATIONS UNIT	MISSY PARKER JOHN LYONS (T)
INFORMATION OFFICER	JOEL BRUMM LIV STECKER	MEDICAL UNIT	EAMONN RYAN DIANA BRAUN
LIAISON OFFICER	SCOTT CRAWFORD JEFF SEVIGNEY (T)	SECURITY UNIT	TOM TAYLOR JOE ROBERTSON (T)
HUMAN RESOURCE SPECIALIST	SUSIE MANEZES (ICP) JON TIPTON (TF)	FOOD UNIT	ALEX LILLA
4. Agency/Organization Representative(s):		7. Operations Section:	
Agency/Organization	Name	OPS SECTION CHIEF	AARON ROWE JEROMY WILSON (T)
USFS - MALHEUR	ANN NIESEN CRAIG TRULOCK	PLANNING OPS	KURT RANTA CODY ACORD (T)
USFS - MALHEUR	JOSHUA GILES	STRATEGIC OPS	TONY ENGEL
USFS - UMATILLA	STEPHANEY KERLEY	STAGING AREA	
ODF	ALLISON RAYBURN	DIVISION/GROUP	A BOB HINDS IAN MCCORD (T)
LEAD READ	MATT SMITH (T)	DIVISION/GROUP	E JON STONELAKE ANDREW STINCHFIELD (T)
INTERAGENCY RESOURCE REPRESENTATIVE	PAUL GIBBS 951-903-4135	DIVISION/GROUP	G DJ GOLDSMITH
5. Planning Section:		DIVISION/GROUP	M BRAD BRYANT
CHIEF	MARGE HUTCHINSON	DIVISION/GROUP	S/Z LARRY LEACH
DEPUTY	ERIC BLACK HOWARD JOHNSON (VIRTUAL)	DIVISION/GROUP	CONTINGENCY EZRA BUTTERFIELD
RESOURCES UNIT	JILL JOHNSON	DIVISION/GROUP	STRUCTURE/IA JIM WALKOWSKI
SITUATION UNIT		7b. Air Operations Branch:	
DOCUMENTATION UNIT	DEIDRE SMITH (VIRTUAL)	AIR OPS BRANCH DIRECTOR	PAUL BALFOUR
DEMOBILIZATION UNIT	MIKE HESTON (VIRTUAL)	AIR SUPPORT SUPERVISOR	TIM LYDA
FIRE BEHAVIOR ANALYST	DON STRAND		
TRAINING SPECIALIST		8. Finance/Administration Section:	
GIS SPECIALIST	SHAWN BUSHNELL	CHIEF	CHERI FULLER
TECHNOLOGY SUPPORT SPECIALIST	GEORGE JENKINS BRADLEY DILG	DEPUTY	CHRISTINA GOEBEL
INCIDENT METEOROLOGIST	DEREK WILLIAMS JAMES WHITE (T)	TIME UNIT	STEVE CROW
6. Logistics Section:		PROCUREMENT UNIT	MARK BOHNET
CHIEF	KEVIN HAUGHTON (TAYLOR FLATS) PAUL FOOTEN (ICP) (T)	INCIDENT CONTRACT PROJ INSP	ROB HECHINGER
FACILITIES UNIT	LEE VENNING (TAYLOR FLATS) RICHARD CROWTHER (ICP)	COST UNIT	KAY HIGH (VIRTUAL)
BASE CAMP MANAGER	TULLY PRITCHETT (ICP)		
9. Prepared By:	Name: JILL JOHNSON	Position/Title: RESL	Signature: 
ICS 203	IAP Page	Date/Time: 09/04/2022 2000	



Fire Weather Forecast

FORECAST NO: 9
PREDICTION FOR: Monday-Tuesday
DATE: September 5th and 6th, 2022
FORECAST ISSUED: 2000 September 4th, 2022

Fire: Crockets Knob
UNIT: OR-MAF-022199
Incident Meteorologist: Derek Williams
Signed: *Derek Williams*

WEATHER DISCUSSION: Terrain driven winds are expected today with a light west to northwest wind component of less than 10 mph developing on exposed western slopes and ridgetops in the afternoon. A slightly cooler, more stable air mass will be in place today with only a few high clouds expected. Dry conditions will continue but with cooler temperatures today, expect to start out with moderate RH recoveries with daytime minimums not falling below 20% in some higher elevations.

TODAY:

WEATHER: Some high clouds.
MAX TEMP: Valleys: 83-87° (3-4° ↓) **MIN RH:** Valleys: 19-24% (4-5% ↑)
Ridgetops: 74-78° (3-4° ↓) **Ridgetops:** 23-27% (4-5% ↑)
CHC WTG RAIN: 0% **LAL:** 1 **HAINES:** 3 (Low)

WINDS: Valleys: Downslope winds 2-4 mph in the morning. Upslope winds 4-6 mph developing after 1030.
(20 feet) Ridgetops: Southeast 5-8 mph in the morning transitioning to the west 5-8 mph in the afternoon, becoming northwest at 10 mph with gusts up to 15 mph by 1600.

MIXING HEIGHT: Rising to 3,900 feet by 1600.

TRANSPORT WIND: West 5-10 mph.

VISIBILITY: 8-10 miles. **INVERSION:** Little to no inversion.

TONIGHT:

WEATHER: Mostly clear. Moderate inversion setting up.
MIN TEMP: Valleys: 50-55° (3-4° ↑) **MAX RH:** Valleys: 50-55% (10-15% ↓)
Ridgetops: 55-60° (4-6° ↑) **Ridgetops:** 45-50% (10-15% ↓)
CHC WTG RAIN: 0% **LAL:** 1

WINDS: Valleys: Downslope and down valley winds of 2-4 mph developing through the night.
(20 FEET) Ridgetops: North wind around 5 mph transitioning to the southeast after midnight.

TRANSPORT WIND: Northwest 5 mph.

TUESDAY:

WEATHER: Mostly sunny.
MAX TEMP: Valleys: 82-86° (10-13° ↑) **MIN RH:** Valleys: 11-15% (7-9% ↓)
Ridgetops: 73-77° (10-13° ↑) **Ridgetops:** 14-18% (7-9% ↓)
CHC WTG RAIN: 0% **LAL:** 1 **HAINES:** 4 (Low)

WINDS: Valleys: Downslope winds 2-4 mph in the morning. Upslope winds 4-6 mph developing after 1030.
(20 feet) Ridgetops: Southeast 5-8 mph in the morning transitioning to the southwest 6-10 mph around noon, becoming west 7-11 mph with gusts around 20 mph late afternoon.

MIXING HEIGHT: Rising to 9,500 feet by 1600.

TRANSPORT WIND: West-southwest around 15 mph.

VISIBILITY: 7-9 miles. **INVERSION:** inversion lifting around 1200

EXTENDED OUTLOOK: Wednesday through Saturday: There is a slight chance of thunderstorms Wednesday as an expanding high pressure ridge brings mid-level moisture to the area in addition to very warm and dry conditions at the surface and gusty west winds. This will lead to at least elevated fire weather conditions. A cold front will move through the area Wednesday night and Thursday bringing temperatures down closer to normal for Thursday along with a consistent northwest wind. Overall dry conditions will continue Friday and Saturday with slight chances of rain emerging by early next week.

Nearby Weather Observations →



FIRE BEHAVIOR FORECAST

FORECAST NUMBER: 8	TYPE OF FIRE: WILDFIRE
FIRE NAME: Crockets Knob	OPERATIONAL PERIOD: Day Shift Sept 5, 2022
DATE ISSUED: Sept 4, 2022	TIME ISSUED: 2000 HOURS
UNIT: OR-MAF	Don Strand NW IMT12 FBAN

INPUTS

WEATHER SUMMARY: See attached weather forecast. Max temps – near 76 degrees min RH near 21%. Winds – upslope 4-6 mph with afternoon ridgetop winds west-northwest 14 mph. Haines Index 3 (low).

FUELS: Consists of brush, dense regeneration with a surface litter of large down wood. The fire area also contains snags and areas with remnant live trees which survived the 1996 fire.

Live fuel moistures in the Ceanothus are estimated to be near 100%. 1000-hour dead fuel moistures are in the 10% range. 10-hr and 100-hr fuel moistures are in the critically dry range.

Energy Release Component is near the 95th percentile.

OUTPUTS

FIRE BEHAVIOR

GENERAL:

Continued elevated fire behavior potential due to dry fuels.

- In areas of surface fuels of down logs and branch wood, fire behavior will be backing and flanking with low to moderate intensity. Where trees are above the surface fire, single and group torching with downwind spotting across gaps in surface fuels to available fuels (leap frogging).
- Sub alpine trees are present in the upper elevations and easily torch, producing numerous fire brands.
- Where fire gets in alignment with winds and or slope, short upslope runs in the brush, reproduction and timber stringers are possible. Potential for flare ups exists in areas of dirty burns.
- Spot fires initiate quickly, spread rapidly and are difficult to suppress.

POI: near 70%. Maximum spotting distance near 0.2 miles

Head fire rates of spread in the surface fuels will be 4 to 8 feet/minute. On steeper slopes and with wind gusts, 14 to 20 ft/minute.

SPECIFIC:

DIV A/E: Potential for occasional torching in areas of dirty burns. Continue to watch for spot fires.

DIV M/: Areas of spread will continue through the brush and timbered islands with occasional torching, spotting across the sparse grass openings.

DIV Z: Flare ups with torching in unburned islands and areas of dirty burns is still possible. Lighter westerly winds with the upslope winds today so potential for spots across line.

INITIAL ATTACK: Pay attention to wind/slope alignment. Potential for rapid rates of spread in light flashy fuels exist.

AIR OPERATIONS: Expect areas of smoke haze/drift in the area.

SAFETY

As most of the fire activity is on the north flank, there's abundant sub alpine fir, also know as the "devil's fuel". Sub alpine easily torches in moderate conditions, leading to spotting in available fuels. Even after light showers, within a couple of hours, these trees can still torch.

Reburn potential exists under heat treated conifer reproduction in areas of dirty burn. This can be problematic near fire perimeters and lead to spotting.

Snags and green trees near fire edges may become overhead hazards.

Safety Message

5 September 2022

INCIDENT: CROCKETS KNOB

OPERATIONAL PERIOD: 0600-1800

TOPICS: MISSION CREEP

Mission Creep is the expansion of a mission or task beyond original objectives or assignment. In our business this is most often undesirable unless serious life considerations are at risk. Many times, Mission Creep will continue once started until catastrophic failure or undesirable outcomes are encountered. Plans are built based on set and measurable objectives. Stay in your lane and avoid the urge to creep!

Subjective vs. Objective Hazards

A popular mountaineering test divides the alpinists' hazards into two distinct types: subjective, which one has direct control over (e.g., condition of the equipment, the decision to turn back) and objective hazards, which are inherent to the alpine environment (e.g., avalanches, rock fall).

Objective hazards are a natural part of the environment. They cannot be eliminated, and one must either:

- Not go into the environment where they exist, or
- Adhere to a procedure where safety from the hazard is assured.

Similarly, the wildland firefighter's hazards are either subjective or objective. Examples of subjective hazards would be working below a dozer constructing fireline or the use of improper techniques while felling a tree. The fireline supervisor has direct control over these types of hazards.

The wildland fire environment has four basic objective hazards: lightning, fire-weakened timber (standing and lying), rolling rocks, and entrapment by running fires. When these hazards exist, the options are:

- Not enter the environment, or
- Adhere to a safe procedure.
 - The key to a safe procedure is Lookout(s), Communications(s), Escape Routes, and Safety Zones (LCES).

The nature of wildland fire suppression dictates continuously evaluating and, when necessary, re-establishing LCES as time and fire growth progress.

If you don't think its safe, it probably isn't

SAFETY OFFICER: Troy Corn, Jack Cates

Deliberate Risk Assessment-Hazard Summary

5 September 2022

Hazard	Mitigation	Post Risk
Extraction Time	Utilize shorthaul, agency and civilian medivac as treatment/timing dictates. Review ordering procedure for all aircraft. Establish redundant plans for evac if using aircraft. Identify medivac sites and helispots. Initiate ground transport to accident site for transport capability. Identify EMT/EMTP from resources assigned to division. Provide line qualified paramedics to each division as available. Review IWI protocol to ensure familiarity. Evaluate on-going need for repositioning medical personnel. Provide dust abatement on Helispots as needed. Recognize that ground extraction times in North half of fire are long, have plan in place for patient transfer to aviation if Red Medical.	HIGH
Aircraft	Utilize Air Attack. Ensure all resources are a safe distance from all bucket and retardant drops. Establish LCES. Utilize air to ground primary for fixed wing, air to ground 2 for bucket work as needed. Reference IRPG (Safe aircraft operations pg. 61-62). Ensure IA resources have coordination with unassigned local air resources to provide deconfliction.	HIGH
Hazard Trees	Use avoidance to limit exposure time. Fall ahead to avoid exposure. Use qualified fallers or alternate methods if needed. Conduct on-going risk analysis of all new and existing work areas. Follow Hazard Tree Safety Guidelines (IRPG page 20-21).	HIGH
Heavy Equipment	Post lookouts around equipment work areas. Establish communications with equipment boss and operator. Do not work down slope from equipment. Follow agency guidelines for chipping operations.	HIGH
Physical Factors	Maintain hydration schedule. Closely monitor work rate and implement rest periods. Maintain nutrition. Ensure adequate work/rest.	MODERATE
Fire Behavior	Maintain awareness of increased spotting distances with changes in fire weather. Be aware of burn windows and weather impacts and min/max RH for flashy fuels/local conditions. Report changes to FBAN and IMET. Establish MAP for disengagement to provide for an orderly retreat given lack of safety zones. Have a plan for disengagement that establishes a designated meeting point and maintains personnel accountability.	MODERATE
Steep Terrain/Gravity	Do not work crews above or below each other. Post lookouts for rolling material. Watch footing in loose soil, rock and around vegetation. Do not work below heavy equipment. Scout and identify travel routes.	MODERATE
Unburned Fuels/Firing Ops	Maintain awareness fuel dryness levels. Establish LCES. Ensure management action points are implemented and followed. Weather updates as needed during burning operations. Locate indirect firelines to minimize unburned fuels. Follow Interagency Ignition Guide. Ensure communications between all firing operations. Establish road security at all firing sites. Follow approved firing plan for unburned fuels. If utilizing aerial ignitions, make sure firing plan is in place and communicated to all resources and understood. Utilize separate Air to Ground for operation as appropriate.	MODERATE
Transportation	Be aware of increased traffic flow over Labor Day Weekend. Sign all incident roads that provide access to divisions. Provide daily updated travel plan maps. Practice defensive driving. In local communities obey the posted speed limits in town and recognize the school zone around camp and the presence of children along streets and roadways. Use reader boards to provide advanced warning and control entry to base camp as needed. Identify and evaluate contingency and alternate escape and travel routes. Provide dust abatement and grading as needed. Provide advanced scouting for transport access and bridge weight restrictions. Evaluate road conditions for access, egress, and travel routes to the north of the fire for drivability and safety.	MODERATE

Deliberate Risk Assessment-Hazard Summary

5 September 2022

Initial Attack	Ensure identified IA resources are briefed of expectations and ensure communication plan is provided. Ensure resources are briefed on IA command structure. Provide identified crews with area maps.	MODERATE
ATV/UTV	Follow agency specific rules and regulations for proper PPE. Make sure operators are properly licensed and trained. Operate machine to the current and expected conditions. Do not overload machine.	MODERATE
Environmental Factors	Assign medical personnel to camp. Assess for known allergies and report to medical personnel. Obtain Bee Bopper/wasp spray and yellow jacket traps. Maintain an awareness of livestock, wildlife and rattlesnakes. Identify and report allergies to your chain of command. Work with READs and GISS to evaluate and identify mineshafts.	MODERATE
Communication	Evaluate for dead zones prior to engagement. Utilize human repeaters as needed. Ensure coverage and accountability of resources in problem areas. Spiking resources must be in cell coverage. 24 staffing at JDICC will serve as a backup. Spike locations relayed to Ops daily.	LOW
Public Interaction	Ensure changes to closures and evacuation levels are fully communicated to incident personnel and the public. Implement area and road closures as necessary. Maintain a lookout for hunters in and out of closure areas. Maintain awareness of evacuation areas and provide accurate information dissemination.	LOW
Viral Transmission Mitigations, Communicable Disease	Maintain awareness of health, perform self-checks, maintain social distancing, wear face coverings in accordance with CDC recommendations. Report and isolate if not feeling well. Establish liaison with Grant County Public Health.	LOW

Division/Group Assignment List (ICS 204 WF)
Controlled Unclassified Information//Basic

1. Incident Name:				3.		
CROCKETS KNOB				Branch:	Division/Group A	
2. Operational Period: DAY						
Date/Time From: 09/05/2022 0600 MON		Date/Time To: 09/05/2022 1800 MON				
4. Operations Personnel						
OPERATIONS CHIEF		AARON ROWE; JEROMY WILSON (T) KURT RANTA; CODY ACORD (T)		DIVISION/GROUP SUPERVISOR		BOB HINDS IAN MCCORD (T)
SAFETY OFFICER		TROY CORN; JACK CATES ERIC MILLER (T)		AIR OPERATIONS BRANCH DIRECTOR		PAUL BALFOUR
5. Resources Assigned this Period						
Strike Team / Task Force / Resource Designator	LWD	Leader	Number Persons	Drop Off PT./Time	Pick Up PT./Time	
O-61.82 SOF2	09/10	DON WALLER	1	BASE CAMP/0600	BASE CAMP/1800	
O-21 TFLD	09/05	MICHAEL CEARNS	1	BASE CAMP/0600	BASE CAMP/1800	
O-83 TFLD	09/10	ERIC METZGER	1	BASE CAMP/0600	BASE CAMP/1800	
C-15 CRW1 PRESCOTT IHC	09/12	DARIN FISHER	23	BASE CAMP/0600	BASE CAMP/1800	
C-5 CR2I GRAYBACK FORESTRY NCC 13B	09/15	DAVID BLANCO	18	BASE CAMP/0600	BASE CAMP/1800	
C-17 CR2I SRV #10	09/07	MAGDALENO GUARDADO	22	BASE CAMP/0600	BASE CAMP/1800	
C-24 CRW2 WEST COAST REFOREST CR07	09/15	BENJAMIN MARTINEZ	20	BASE CAMP/0600	BASE CAMP/1800	
E-35 ENG6 STRIKE BACK LLC	09/08	JOE PICKET	2	BASE CAMP/0600	BASE CAMP/1800	
E-37 ENG4 AAA THUNDERBOLT FIRE SVC	09/08	ROBERT STEWART	3	BASE CAMP/0600	BASE CAMP/1800	
E-39 ENG BIGFOOT	09/09	TRAVIS ALBRECHT	3	BASE CAMP/0600	BASE CAMP/1800	
E-60 WTS2 ALL WET TRUCKING	09/10	ALEX WRIGHT	1	BASE CAMP/0600	BASE CAMP/1800	
E-61 WTS2 ALL WET TRUCKING	09/10	WILLIAM HOOVER	1	BASE CAMP/0600	BASE CAMP/1800	
E-93 WTS2 STORM CARPENTER	09/12	STACY COATES	1	BASE CAMP/0600	BASE CAMP/1800	
E-12 UTV KD OUTDOORS		UNSTAFFED		BASE CAMP/0600	BASE CAMP/1800	
E-27 AMB1 CASCADE MED TRANSPORT	09/06	BRADEY HOLT	2	BASE CAMP/0600	BASE CAMP/1800	
O-96 EMPF MEDIC 4 FIRELINE MEDICS	09/11	MATT FREEBORN	1	BASE CAMP/0600	BASE CAMP/1800	
O-93 EMPF MEDIC 2 FRONTLINE EMS	09/10	ASHLEY CARTER	1	BASE CAMP/0600	BASE CAMP/1800	
8. Division/Group Communication Summary						
Function	Channel	RX Frequency N/W	RX Tone/NAC	TX Frequency N/W	TX Tone/NAC	Mode
COMMAND	1	170.4250	131.8	168.0750	131.8	A
COMMAND	2	170.4125	131.8	165.9625	131.8	A
TACTICAL	4	168.0500	131.8	168.0500	131.8	A
AIR TO GROUND	13	167.0750		167.0750		A
9. Prepared By (Resource Unit Leader)			Approved By (Planning Section Chief)		Date	Time
JILL JOHNSON			MARGE HUTCHINSON		09/04/2022	2000

Division/Group Assignment List (ICS 204 WF)
Controlled Unclassified Information//Basic

1. Incident Name:			3.			
CROCKETS KNOB			Branch:		Division/Group	
2. Operational Period: DAY			A			
Date/Time From: 09/05/2022 0600 MON		Date/Time To: 09/05/2022 1800 MON				
4. Operations Personnel						
OPERATIONS CHIEF		AARON ROWE; JEROMY WILSON (T) KURT RANTA; CODY ACORD (T)		DIVISION/GROUP SUPERVISOR		BOB HINDS IAN MCCORD (T)
SAFETY OFFICER		TROY CORN; JACK CATES ERIC MILLER (T)		AIR OPERATIONS BRANCH DIRECTOR		PAUL BALFOUR
5. Resources Assigned this Period						
Strike Team / Task Force / Resource Designator	LWD	Leader	Number Persons	Drop Off PT./Time	Pick Up PT./Time	
6. Control Operations/Work Assignments:						
<p>TASK: Hold and secure spots west of H-10 and dozer line east from H-10. Continue mop-up and patrol 4550 Road. PURPOSE: Prevent fire growth that impacts private property, cultural and natural resources, and remaining timber stands within Summit Fire scar. END STATE: Fire is contained east of 45 Road and north of 4550 Road.</p>						
7. Special Instructions:						
<p>Engines and tenders may NOT draft directly from natural water sources, such as creeks. Drafting will occur only from Fold-a-tanks.</p> <p>Regional Saw Coordinators, Aaron Pedersen & Marc Cormier, will notify the DIVS when entering and leaving the Division.</p> <p>E-4 ENG6 GRAYBACK FORESTRY will be on R&R 9/5-9/6, back on 9/7.</p>						
8. Division/Group Communication Summary						
Function	Channel	RX Frequency N/W	RX Tone/NAC	TX Frequency N/W	TX Tone/NAC	Mode
COMMAND	1	170.4250	131.8	168.0750	131.8	A
COMMAND	2	170.4125	131.8	165.9625	131.8	A
TACTICAL	4	168.0500	131.8	168.0500	131.8	A
AIR TO GROUND	13	167.0750		167.0750		A
9. Prepared By (Resource Unit Leader)			Approved By (Planning Section Chief)		Date	Time
JILL JOHNSON			MARGE HUTCHINSON		09/04/2022	2000

Division/Group Assignment List (ICS 204 WF)
Controlled Unclassified Information//Basic

1. Incident Name:			3.			
CROCKETS KNOB			Branch:		Division/Group	
2. Operational Period: DAY					E	
Date/Time From: 09/05/2022 0600 MON		Date/Time To: 09/05/2022 1800 MON				
4. Operations Personnel						
OPERATIONS CHIEF		AARON ROWE; JEROMY WILSON (T) KURT RANTA; CODY ACORD (T)		DIVISION/GROUP SUPERVISOR		JON STONELAKE ANDREW STINCHFIELD (T)
SAFETY OFFICER		TROY CORN; JACK CATES ERIC MILLER (T)		AIR OPERATIONS BRANCH DIRECTOR		PAUL BALFOUR
5. Resources Assigned this Period						
Strike Team / Task Force / Resource Designator		LWD	Leader	Number Persons	Drop Off PT./Time	Pick Up PT./Time
O-61.80 SOF2		09/10	PAUL BRNA	1	BASE CAMP/0600	BASE CAMP/1800
O-84 TFLD		09/11	SCOTT BENINATI	1	BASE CAMP/0600	BASE CAMP/1800
O-86 TFLD		09/12	NIC TURCO	1	BASE CAMP/0600	BASE CAMP/1800
O-155 TFLD		09/15	TIM SCOTT	1	BASE CAMP/0600	BASE CAMP/1800
O-14 HEQB		09/05	NICK SCHULZ	1	BASE CAMP/0600	BASE CAMP/1800
O-16 HEQB (T)		09/06	THOMAS FISHER	1	BASE CAMP/0600	BASE CAMP/1800
O-54 HEQB		09/12	JAMES MAYOR	1	BASE CAMP/0600	BASE CAMP/1800
O-80 HEQB (T)		09/09	WHITNEY VANDEWIELE	1	BASE CAMP/0600	BASE CAMP/1800
O-156 HEQB		09/15	JAMES GOELLER	1	BASE CAMP/0600	BASE CAMP/1800
O-157 HEQB		09/15	MATT JONES	1	BASE CAMP/0600	BASE CAMP/1800
O-158 HEQB (T)		09/15	TYLER TOMLINSON	1	BASE CAMP/0600	BASE CAMP/1800
O-1 FMOD		09/05	JERRY PETTYJOHN	2	BASE CAMP/0600	BASE CAMP/1800
O-3 FMOD WEBB		09/05	MARK WEBB	2	BASE CAMP/0600	BASE CAMP/1800
O-128 FMOD SWEDBERG CONTR		09/12	TIMOTHY WAGNER	2	BASE CAMP/0600	BASE CAMP/1800
O-176 FMOD GLEN DOBSON JR		09/18		2	BASE CAMP/0600	BASE CAMP/1800
C-9 CRW2 IRON MOUNTAIN FF		09/10	VICTOR CISNEROS	20	BASE CAMP/0600	BASE CAMP/1800
C-10 CRW2 CSR ENTERPR CRS3		09/10	JUBENCIO SALDANG	20	BASE CAMP/0600	BASE CAMP/1800
C-18 CR2I VALE BLM SRV #12		09/07	JAY JACOBO	20	BASE CAMP/0600	BASE CAMP/1800
8. Division/Group Communication Summary						
Function	Channel	RX Frequency N/W	RX Tone/NAC	TX Frequency N/W	TX Tone/NAC	Mode
COMMAND	1	170.4250	131.8	168.0750	131.8	A
COMMAND	2	170.4125	131.8	165.9625	131.8	A
TACTICAL	5	168.2000	131.8	168.2000	131.8	A
AIR TO GROUND	13	167.0750		167.0750		A
9. Prepared By (Resource Unit Leader)			Approved By (Planning Section Chief)		Date	Time
JILL JOHNSON			MARGE HUTCHINSON		09/04/2022	2000

Division/Group Assignment List (ICS 204 WF)
Controlled Unclassified Information//Basic

1. Incident Name:				3.		
CROCKETS KNOB				Branch:	Division/Group E	
2. Operational Period: DAY						
Date/Time From: 09/05/2022 0600 MON		Date/Time To: 09/05/2022 1800 MON				
4. Operations Personnel						
OPERATIONS CHIEF		AARON ROWE; JEROMY WILSON (T) KURT RANTA; CODY ACORD (T)		DIVISION/GROUP SUPERVISOR		JON STONELAKE ANDREW STINCHFIELD (T)
SAFETY OFFICER		TROY CORN; JACK CATES ERIC MILLER (T)		AIR OPERATIONS BRANCH DIRECTOR		PAUL BALFOUR
5. Resources Assigned this Period						
Strike Team / Task Force / Resource Designator	LWD	Leader	Number Persons	Drop Off PT./Time	Pick Up PT./Time	
E-3 ENG6 GRAYBACK FORESTRY	09/04	CHRIS KENNEDY	3	BASE CAMP/0600	BASE CAMP/1800	
E-18 ENG4 AAA THUNDERBOLT FIRE SVC	09/19	ROY CATES	3	BASE CAMP/0600	BASE CAMP/1800	
E-38 ENG4 AAA THUNDERBOLT FIRE SVC	09/16	JAMES GRANT	3	BASE CAMP/0600	BASE CAMP/1800	
E-77 ENG6 OREGON WOODS	09/11	RAVEN PARKINS	3	BASE CAMP/0600	BASE CAMP/1800	
E-79 ENG6 HI COUNTRY LLC E1021	09/11	JOHN CONGER	3	BASE CAMP/0600	BASE CAMP/1800	
E-80 ENG6 A1 FIRESTORM E5	09/11	DONALD LAFFERTY	2	BASE CAMP/0600	BASE CAMP/1800	
E-81 ENG6 TIMBER BASIN CONTR	09/11	SCOTT FARMER	3	BASE CAMP/0600	BASE CAMP/1800	
E-5 WTS2 45 CONTRACTING LLC	09/04	MIKE NAULT	1	BASE CAMP/0600	BASE CAMP/1800	
E-95 WTS2 VEGETATION SOLUTIONS	09/12	JOHN MCKENZIE	1	BASE CAMP/0600	BASE CAMP/1800	
E-113 WTS2 KING INC	09/15	DAVID SHEFFEL	1	BASE CAMP/0600	BASE CAMP/1800	
E-114 WTS2 SAULS MOBILE WASH	09/13	WAYNE SAUL	1	BASE CAMP/0600	BASE CAMP/1800	
E-17 DZR2 J & D LOGGING & CONTR	09/05	JOHN SANOWSKI	2	BASE CAMP/0600	BASE CAMP/1800	
E-98 DZR2 CARTER	09/13	PATTON CARTER	2	BASE CAMP/0600	BASE CAMP/1800	
E-11 UTV KD OUTDOORS		UNSTAFFED		BASE CAMP/0600	BASE CAMP/1800	
E-109 UTV E OREGON RENTALS		UNSTAFFED		BASE CAMP/0600	BASE CAMP/1800	
E-119 UTV E OREGON RENTALS		UNSTAFFED		BASE CAMP/0600	BASE CAMP/1800	
O-143 FOBS	09/15	JAKE QUINTANA	1	BASE CAMP/0600	BASE CAMP/1800	
8. Division/Group Communication Summary						
Function	Channel	RX Frequency N/W	RX Tone/NAC	TX Frequency N/W	TX Tone/NAC	Mode
COMMAND	1	170.4250	131.8	168.0750	131.8	A
COMMAND	2	170.4125	131.8	165.9625	131.8	A
TACTICAL	5	168.2000	131.8	168.2000	131.8	A
AIR TO GROUND	13	167.0750		167.0750		A
9. Prepared By (Resource Unit Leader)			Approved By (Planning Section Chief)		Date	Time
JILL JOHNSON			MARGE HUTCHINSON		09/04/2022	2000

Division/Group Assignment List (ICS 204 WF)
Controlled Unclassified Information//Basic

1. Incident Name:			3.			
CROCKETS KNOB			Branch:		Division/Group	
2. Operational Period: DAY			E			
Date/Time From: 09/05/2022 0600 MON		Date/Time To: 09/05/2022 1800 MON				
4. Operations Personnel						
OPERATIONS CHIEF		AARON ROWE; JEROMY WILSON (T) KURT RANTA; CODY ACORD (T)		DIVISION/GROUP SUPERVISOR		JON STONELAKE ANDREW STINCHFIELD (T)
SAFETY OFFICER		TROY CORN; JACK CATES ERIC MILLER (T)		AIR OPERATIONS BRANCH DIRECTOR		PAUL BALFOUR
5. Resources Assigned this Period						
Strike Team / Task Force / Resource Designator	LWD	Leader	Number Persons	Drop Off PT./Time	Pick Up PT./Time	
O-144 FOBS	09/15	DAVID REYNOLDS	1	BASE CAMP/0600	BASE CAMP/1800	
O-145 FOBS (T)	09/15	BRADLEY WALKER	1	BASE CAMP/0600	BASE CAMP/1800	
O-122 REAF	09/13	SUSAN THEIS	1	BASE CAMP/0600	BASE CAMP/1800	
O-165 REAF (T)	09/15	ERIN BURKE	1	BASE CAMP/0600	BASE CAMP/1800	
READ	09/16	MORGAN ISSACS	1	BASE CAMP/0600	BASE CAMP/1800	
O-7 EMT	09/13	DANIEL SOLOMON	1	BASE CAMP/0600	BASE CAMP/1800	
O-94 EMPF MEDIC 1 ADVENTURE MEDICS	09/10	CHRISTIAN MILLER	1	BASE CAMP/0600	BASE CAMP/1800	
E-87 REMS BLACKWOODS EMERG SVC	09/12	NICK BRUCKNER	4	BASE CAMP/0600	BASE CAMP/1800	
6. Control Operations/Work Assignments:						
<p>TASK: Hold and secure spots west of 45 Road. Continue direct dozer line west and north of Indian Rock. Continue prep on 45 Road north of 537 junction.</p> <p>PURPOSE: Prevent fire growth that impacts cultural and natural resources, remaining timber stands within the Summit Fire scar, and the Indian Rock Lookout</p> <p>END STATE: Fire is contained east of 45 Road.</p>						
7. Special Instructions:						
Engines and tenders may NOT draft directly from natural water sources, such as creeks. Drafting will occur only from Fold-a-tanks.						
Regional Saw Coordinators, Aaron Pedersen & Marc Cormier, will notify the DIVS when entering and leaving the Division.						
8. Division/Group Communication Summary						
Function	Channel	RX Frequency N/W	RX Tone/NAC	TX Frequency N/W	TX Tone/NAC	Mode
COMMAND	1	170.4250	131.8	168.0750	131.8	A
COMMAND	2	170.4125	131.8	165.9625	131.8	A
TACTICAL	5	168.2000	131.8	168.2000	131.8	A
AIR TO GROUND	13	167.0750		167.0750		A
9. Prepared By (Resource Unit Leader)			Approved By (Planning Section Chief)		Date	Time
JILL JOHNSON			MARGE HUTCHINSON		09/04/2022	2000

Division/Group Assignment List (ICS 204 WF)
Controlled Unclassified Information//Basic

1. Incident Name:			3.			
CROCKETS KNOB			Branch:		Division/Group	
2. Operational Period: DAY			G			
Date/Time From: 09/05/2022 0600 MON		Date/Time To: 09/05/2022 1800 MON				
4. Operations Personnel						
OPERATIONS CHIEF		AARON ROWE; JEROMY WILSON (T) KURT RANTA; CODY ACORD (T)		DIVISION/GROUP SUPERVISOR		DJ GOLDSMITH
SAFETY OFFICER		TROY CORN; JACK CATES ERIC MILLER (T)		AIR OPERATIONS BRANCH DIRECTOR		PAUL BALFOUR
5. Resources Assigned this Period						
Strike Team / Task Force / Resource Designator		LWD	Leader	Number Persons	Drop Off PT./Time	Pick Up PT./Time
O-99 SOFR		09/12	JEROME DRAZINSKI	1	BASE CAMP/0600	BASE CAMP/1800
E-99 SMM3 JLC CONTRACTING 333G		09/13	BRYAN STAHANCYK	2	BASE CAMP/0600	BASE CAMP/1800
E-29 MBM2 MORRIS FORESTRY LLC - 834891		09/06	DOU GHARITY	2	BASE CAMP/0600	BASE CAMP/1800
E-32 MBM2 BRUCE YOUNG LOGGING		09/07	CALEB JOHNSON	2	BASE CAMP/0600	BASE CAMP/1800
E-115 MBM1 BOULDER RIDGE CONSTRUCTION		09/14	GARRY ALLEN	2	BASE CAMP/0600	BASE CAMP/1800
E-62 FEL1 J & D LOGGING & CONTR		09/16	COLBY BRADFORD	2	BASE CAMP/0600	BASE CAMP/1800
E-10 CHP2 HINER JR, THEODORE W		09/08	AUSTIN HUTTEMA	3	BASE CAMP/0600	BASE CAMP/1800
6. Control Operations/Work Assignments:						
<p>TASK: Scout indirect control line east of the 45 Road north of Division Echo and west of the 10 Road system. PURPOSE: Prevent fire growth that impacts cultural and natural resource values and recreation sites. END STATE: Fire is contained east of 45 Road and west of 10 Road.</p>						
7. Special Instructions:						
Regional Saw Coordinators, Aaron Pedersen & Marc Cormier, will notify the DIVS when entering and leaving the Division.						
8. Division/Group Communication Summary						
Function	Channel	RX Frequency N/W	RX Tone/NAC	TX Frequency N/W	TX Tone/NAC	Mode
COMMAND	1	170.4250	131.8	168.0750	131.8	A
COMMAND	2	170.4125	131.8	165.9625	131.8	A
TACTICAL	7	166.7250	131.8	166.7250	131.8	A
AIR TO GROUND	13	167.0750		167.0750		A
9. Prepared By (Resource Unit Leader)			Approved By (Planning Section Chief)		Date	Time
JILL JOHNSON			MARGE HUTCHINSON		09/04/2022	2000

Division/Group Assignment List (ICS 204 WF)
Controlled Unclassified Information//Basic

1. Incident Name:			3.			
CROCKETS KNOB			Branch:		Division/Group	
2. Operational Period: DAY					M	
Date/Time From: 09/05/2022 0600 MON		Date/Time To: 09/05/2022 1800 MON				
4. Operations Personnel						
OPERATIONS CHIEF		AARON ROWE; JEROMY WILSON (T) KURT RANTA; CODY ACORD (T)		DIVISION/GROUP SUPERVISOR		BRAD BRYANT
SAFETY OFFICER		TROY CORN; JACK CATES ERIC MILLER (T)		AIR OPERATIONS BRANCH DIRECTOR		PAUL BALFOUR
5. Resources Assigned this Period						
Strike Team / Task Force / Resource Designator		LWD	Leader	Number Persons	Drop Off PT./Time	Pick Up PT./Time
O-61.83 SOF2		09/13	TAIJA CORSO	1		
C-4 CR2I GRAYBACK FORESTRY 13A		09/15	CHARLES COFMAN	20		
C-7 CRW1 EL CARISO IHC		09/09	CHARLES KOTT	22		
C-8 CRW1 INYO IHC		09/08	JOEL SCHILLING	21		
C-16 CRW1 PIKE IHC		09/10	DAVID SMALLMAN	22		
C-25 CRW2 SZ FORESTRY FULLERTON CREW 1		09/15	RICHARD FULLERTON	20		
E-92 WTT2 JWS WILDFIRE		09/13	JOHN MCNEELY	1		
E-94 WTT2 GRAYBACK FORESTRY		09/12	CLIFFORD TEVEBAUGH	1		
E-14 UTV			UNSTAFFED			
6. Control Operations/Work Assignments:						
<p>TASK: Continue direct handline construction and securing east and south of Indian Rock Lookout. Scout indirect control line options along the Vinegar Hill Scenic Area boundary north and west to the 020 Road.</p> <p>PURPOSE: Prevent long duration fire growth that impacts cultural and natural resource values, recreation sites, private property and Indian Rock lookout.</p> <p>END STATE: Fire is contained north and west of Vinegar Hill Scenic area boundary and 020 Road.</p>						
7. Special Instructions:						
<p>Notify Operations of fire growth across the Princess Trail.</p> <p>Regional Saw Coordinators, Aaron Pedersen & Marc Cormier, will notify the DIVS when entering and leaving the Division.</p>						
8. Division/Group Communication Summary						
Function	Channel	RX Frequency N/W	RX Tone/NAC	TX Frequency N/W	TX Tone/NAC	Mode
COMMAND	1	170.4250	131.8	168.0750	131.8	A
COMMAND	2	170.4125	131.8	165.9625	131.8	A
TACTICAL	6	168.6000	131.8	168.6000	131.8	A
AIR TO GROUND	13	167.0750		167.0750		A
9. Prepared By (Resource Unit Leader)			Approved By (Planning Section Chief)		Date	Time
JILL JOHNSON			MARGE HUTCHINSON		09/04/2022	2000

Division/Group Assignment List (ICS 204 WF)
Controlled Unclassified Information//Basic

1. Incident Name:			3.			
CROCKETS KNOB			Branch:		Division/Group	
2. Operational Period: DAY			S / Z			
Date/Time From: 09/05/2022 0600	MON	Date/Time To: 09/05/2022 1800				
4. Operations Personnel						
OPERATIONS CHIEF		AARON ROWE; JEROMY WILSON (T) KURT RANTA; CODY ACORD (T)		DIVISION/GROUP SUPERVISOR		LARRY LEACH
SAFETY OFFICER		TROY CORN; JACK CATES ERIC MILLER (T)		AIR OPERATIONS BRANCH DIRECTOR		PAUL BALFOUR
5. Resources Assigned this Period						
Strike Team / Task Force / Resource Designator	LWD	Leader	Number Persons	Drop Off PT./Time	Pick Up PT./Time	
6. Control Operations/Work Assignments:						
<p>TASK: Secure and patrol dozer line, 436 Road and Big Boulder Trail. PURPOSE: Prevent additional fire spread into Badger Creek that may have future impact to private property, cultural, natural and timber values. END STATE: Fire is contained east of 4550 road and north of Badger Creek.</p>						
7. Special Instructions:						
<p>Engines and tenders may NOT draft directly from natural water sources, such as creeks. Drafting will occur only from Fold-a-tanks.</p> <ul style="list-style-type: none"> If Initial Attack occurs within the TFR, John Day Dispatch will coordinate with appropriate duty officer and contact Field Ops for response. Field Operations will contact IA Group Supervisor and or Air Operations to coordinate response to new start. Local forest Initial Attack frequencies will be used and provided in the IAP Communications Plan The same process will be used for fires outside of TFR if assistance from Crockets Knob fire resources is requested. <p>Regional Saw Coordinators, Aaron Pedersen & Marc Cormier, will notify the DIVS when entering and leaving the Division.</p> <p>E-2 ENG4 GRAYBACK FORESTRY will be on R&R 9/5-9/6, back on 9/7.</p>						
8. Division/Group Communication Summary						
Function	Channel	RX Frequency N/W	RX Tone/NAC	TX Frequency N/W	TX Tone/NAC	Mode
COMMAND	1	170.4250	131.8	168.0750	131.8	A
COMMAND	2	170.4125	131.8	165.9625	131.8	A
TACTICAL	8	166.7750	131.8	166.7750	131.8	A
AIR TO GROUND	13	167.0750		167.0750		A
9. Prepared By (Resource Unit Leader)			Approved By (Planning Section Chief)		Date	Time
JILL JOHNSON			MARGE HUTCHINSON		09/04/2022	2000

Division/Group Assignment List (ICS 204 WF)
Controlled Unclassified Information//Basic

1. Incident Name:			3.			
CROCKETS KNOB			Branch:		Division/Group	
2. Operational Period: DAY			CONTINGENCY			
Date/Time From: 09/05/2022 0600 MON		Date/Time To: 09/05/2022 1800 MON				
4. Operations Personnel						
OPERATIONS CHIEF		AARON ROWE; JEROMY WILSON (T) KURT RANTA; CODY ACORD (T)		DIVISION/GROUP SUPERVISOR		EZRA BUTTERFIELD
SAFETY OFFICER		TROY CORN; JACK CATES ERIC MILLER (T)		AIR OPERATIONS BRANCH DIRECTOR		PAUL BALFOUR
5. Resources Assigned this Period						
Strike Team / Task Force / Resource Designator		LWD	Leader	Number Persons	Drop Off PT./Time	Pick Up PT./Time
O-11 TFLD		09/09	JOSHUAH WINKLER	1	BASE CAMP/0600	BASE CAMP/1800
O-130 TFLD (T)		09/11	TIMOTHY WAGNER	1	BASE CAMP/0600	BASE CAMP/1800
O-15 HEQB **		09/05	AARON KIENZLE	1	BASE CAMP/0600	BASE CAMP/1800
O-20 HEQB (T) **		09/06	DUANE STOKES	1	BASE CAMP/0600	BASE CAMP/1800
C-19 CRW2 WILLAMETTE VLY REFOREST CR 3		09/12	LAZARO MONTANO	20	BASE CAMP/0600	BASE CAMP/1800
C-20 CRW2 TORRES CONTR CR6		09/11	MARCA MARTINEZ	20	BASE CAMP/0600	BASE CAMP/1800
E-78 ENG6 AQUAFORCE E204		09/11	TYLER GILMORE	3	BASE CAMP/0600	BASE CAMP/1800
E-7 DZR2 COUGAR RIDGE CONSTR **		09/05	DAVE OAKS	2	BASE CAMP/0600	BASE CAMP/1800
E-34 MBM1 EAGLE CAP FORESTRY		09/10	BEN FISCHER	2	BASE CAMP/0600	BASE CAMP/1800
E-30 CHP2 GRAYBACK FORESTRY		09/08	JOSH MINER	3	BASE CAMP/0600	BASE CAMP/1800
E-96 CHP1 THE ROAD HOME		09/12	SAM BONADOR	3	BASE CAMP/0600	BASE CAMP/1800
E-97 CHP1 WYEAST FORESTRY MGMT		09/12	ERIC NELSON	3	BASE CAMP/0600	BASE CAMP/1800
E-13 UTV KD OUTDOORS			UNSTAFFED		BASE CAMP/0600	BASE CAMP/1800
O-95 EMPF MEDIC 3 ADVENTURE MEDICS		09/12	MICHAEL COOPER	1	BASE CAMP/0600	BASE CAMP/1800
8. Division/Group Communication Summary						
Function	Channel	RX Frequency N/W	RX Tone/NAC	TX Frequency N/W	TX Tone/NAC	Mode
COMMAND	1	170.4250	131.8	168.0750	131.8	A
COMMAND	2	170.4125	131.8	165.9625	131.8	A
TACTICAL	7	166.7250	131.8	166.7250	131.8	A
AIR TO GROUND	13	167.0750		167.0750		A
9. Prepared By (Resource Unit Leader)			Approved By (Planning Section Chief)		Date	Time
JILL JOHNSON			MARGE HUTCHINSON		09/04/2022	2000

Division/Group Assignment List (ICS 204 WF)
Controlled Unclassified Information//Basic

1. Incident Name:			3.			
CROCKETS KNOB			Branch:		Division/Group	
2. Operational Period: DAY			CONTINGENCY			
Date/Time From: 09/05/2022 0600 MON		Date/Time To: 09/05/2022 1800 MON				
4. Operations Personnel						
OPERATIONS CHIEF		AARON ROWE; JEROMY WILSON (T) KURT RANTA; CODY ACORD (T)		DIVISION/GROUP SUPERVISOR		EZRA BUTTERFIELD
SAFETY OFFICER		TROY CORN; JACK CATES ERIC MILLER (T)		AIR OPERATIONS BRANCH DIRECTOR		PAUL BALFOUR
5. Resources Assigned this Period						
Strike Team / Task Force / Resource Designator		LWD	Leader	Number Persons	Drop Off PT./Time	Pick Up PT./Time
6. Control Operations/Work Assignments:						
<p>TASK: Scout for contingency lines beyond current containment lines in the 45 Road system, including the 4555 Road and 4560 Road west of 45 Road.</p> <p>PURPOSE: To establish secondary lines of defense that would prevent impact to values if current primary lines are compromised.</p> <p>END STATE: Contingency lines identified and established if needed outside of primary containment lines.</p>						
7. Special Instructions:						
<p>Engines and tenders may NOT draft directly from natural water sources, such as creeks. Drafting will occur only from fold-a-tanks.</p> <ul style="list-style-type: none"> · If Initial Attack occurs within the TFR, John Day Dispatch will coordinate with appropriate duty officer and contact Field Ops for response. · Field Operations will contact IA Group Supervisor and or Air Operations to coordinate response to new start. · Local forest Initial Attack frequencies will be used and provided in the IAP Communications Plan · The same process will be used for fires outside of TFR if assistance from Crockets Knob fire resources is requested. 						
8. Division/Group Communication Summary						
Function	Channel	RX Frequency N/W	RX Tone/NAC	TX Frequency N/W	TX Tone/NAC	Mode
COMMAND	1	170.4250	131.8	168.0750	131.8	A
COMMAND	2	170.4125	131.8	165.9625	131.8	A
TACTICAL	7	166.7250	131.8	166.7250	131.8	A
AIR TO GROUND	13	167.0750		167.0750		A
9. Prepared By (Resource Unit Leader)			Approved By (Planning Section Chief)		Date	Time
JILL JOHNSON			MARGE HUTCHINSON		09/04/2022	2000

Division/Group Assignment List (ICS 204 WF)
Controlled Unclassified Information//Basic

1. Incident Name:				3.		
CROCKETS KNOB				Branch:	Division/Group	
2. Operational Period: DAY						
Date/Time From: 09/05/2022 0600 MON		Date/Time To: 09/05/2022 1800 MON		STRUCTURE / IA		
4. Operations Personnel						
OPERATIONS CHIEF		AARON ROWE; JEROMY WILSON (T) KURT RANTA; CODY ACORD (T)		DIVISION/GROUP SUPERVISOR		JIM WALKOWSKI
SAFETY OFFICER		TROY CORN; JACK CATES ERIC MILLER (T)		AIR OPERATIONS BRANCH DIRECTOR		PAUL BALFOUR
5. Resources Assigned this Period						
Strike Team / Task Force / Resource Designator	LWD	Leader	Number Persons	Drop Off PT./Time	Pick Up PT./Time	
ALASKA STRIKE TEAM				BASE CAMP /0600	BASE CAMP/1800	
O-119 TFLD	09/07	BRITTANY STILLIE	1	BASE CAMP /0600	BASE CAMP/1800	
E-86.1 TFLD (T)	09/07	ROBIN ACE	1	BASE CAMP /0600	BASE CAMP/1800	
E-82 ENG6 AK-KKS K-62	09/07	DAN WHITE	3	BASE CAMP /0600	BASE CAMP/1800	
E-83 ENG6 FAIRBANKS-65	09/07	MATT NUNNELLY	3	BASE CAMP /0600	BASE CAMP/1800	
E-84 ENG6 FAIRBANKS-66	09/07	ROBERT WALLACE	3	BASE CAMP /0600	BASE CAMP/1800	
E-85 ENG6 FAIRBANKS-67	09/07	LAURA LUND	3	BASE CAMP /0600	BASE CAMP/1800	
E-86 ENG6 DOF M-68	09/07	JOE SHAW	3	BASE CAMP /0600	BASE CAMP/1800	
E-112 ENG ODF E-9262	09/13	AARON KIDWELL	2	BASE CAMP /0600	BASE CAMP/1800	
E-91 WTT2 TRI-CO INC TENDER	09/13	CHET HETTINGAL	1	BASE CAMP /0600	BASE CAMP/1800	
6. Control Operations/Work Assignments:						
8. Division/Group Communication Summary						
Function	Channel	RX Frequency N/W	RX Tone/NAC	TX Frequency N/W	TX Tone/NAC	Mode
COMMAND	1	170.4250	131.8	168.0750	131.8	A
COMMAND	2	170.4125	131.8	165.9625	131.8	A
TACTICAL	9	168.2500	131.8	168.2500	131.8	A
TACTICAL	11	168.3125	131.8	168.3125	131.8	A
AIR TO GROUND	12	167.3750		167.3750		A
AIR TO GROUND	13	167.0750		167.0750		A
9. Prepared By (Resource Unit Leader)			Approved By (Planning Section Chief)		Date	Time
JILL JOHNSON			MARGE HUTCHINSON		09/04/2022	2000

Division/Group Assignment List (ICS 204 WF)
Controlled Unclassified Information//Basic

1. Incident Name:			3.			
CROCKETS KNOB			Branch:		Division/Group	
2. Operational Period: DAY			STRUCTURE / IA			
Date/Time From: 09/05/2022 0600 MON		Date/Time To: 09/05/2022 1800 MON				
4. Operations Personnel						
OPERATIONS CHIEF		AARON ROWE; JEROMY WILSON (T) KURT RANTA; CODY ACORD (T)		DIVISION/GROUP SUPERVISOR		JIM WALKOWSKI
SAFETY OFFICER		TROY CORN; JACK CATES ERIC MILLER (T)		AIR OPERATIONS BRANCH DIRECTOR		PAUL BALFOUR
6. Control Operations/Work Assignments:						
<p>Structure Group: TASK: Continue to assess structures and infrastructure that could be impacted by fire spread and develop structure defense plan. Identify structure needs and coordinate with OSFM liaison and ODF to determine structure defense resources available. PURPOSE: To prepare structures and private property values along the Highway 20 corridor and in the vicinity of the fire for impact from fire. END STATE: Structures and private property along the Highway 20 corridor and in the vicinity of the fire are assessed and defensible. Suppression activities to prevent fire impact to private property has occurred.</p> <p>IA Group: TASK: Follow IA response plan to provide IA response with identified resources for new fire starts within TFR. PURPOSE: To support initial attack response capability for the Malheur and Umatilla NFs. END STATE: Prompt and efficient mobilization of identified IA resources to new fire starts.</p>						
7. Special Instructions:						
<ul style="list-style-type: none"> • If Initial Attack occurs within the TFR, John Day Dispatch will coordinate with appropriate duty officer and contact Field Ops for response. • Field Operations will contact IA Group Supervisor and or Air Operations to coordinate response to new start. • Local forest Initial Attack frequencies will be used and provided in the IAP Communications Plan • The same process will be used for fires outside of TFR if assistance from Crockets Knob fire resources is requested. <p>Engines and tenders may NOT draft directly from natural water sources, such as creeks. Drafting will occur only from Fold-a-tanks.</p>						
8. Division/Group Communication Summary						
Function	Channel	RX Frequency N/W	RX Tone/NAC	TX Frequency N/W	TX Tone/NAC	Mode
COMMAND	1	170.4250	131.8	168.0750	131.8	A
COMMAND	2	170.4125	131.8	165.9625	131.8	A
TACTICAL	9	168.2500	131.8	168.2500	131.8	A
TACTICAL	11	168.3125	131.8	168.3125	131.8	A
AIR TO GROUND	12	167.3750		167.3750		A
AIR TO GROUND	13	167.0750		167.0750		A
9. Prepared By (Resource Unit Leader)			Approved By (Planning Section Chief)		Date	Time
JILL JOHNSON			MARGE HUTCHINSON		09/04/2022	2000

AIR OPERATIONS SUMMARY

PREPARED BY: Paul Balfour

PREPARED DATE/TIME: September 4, 1800hrs

INCIDENT NAME Crockets Knob	2. OPERATIONAL PERIOD: Date: 9/5/2022 Helibase Start Time: 0800 End Time: 2000 Sunrise: 0622 Sunset: 2000 CTL (Times valid for John Day PDT)
---------------------------------------	---

<p>3. REMARKS (Safety Notes, Hazards, Air Operations Special Equipment, etc.): General Aviation, See & Avoid YOU will be working in a complex fire environment, ensure YOU understand the Fire Traffic Area (FTA) Protocols. (12nm initial call, 7nm contact must be made prior to entering FTA)</p> <p>Bucket work, Retardant drops: ensure area is clear of ground personnel before dropping; watch for wires; be aware of potential for turbulence at ridge tops, saddles, canyons, etc *** BE AWARE OF FATIGUE, TAKE LONGER BREAKS WHEN FLYING IN SMOKEY CONDITIONS. *** Report all TFR intrusions to Air Operations, Air Support or Helibase as soon as possible.</p>	<p>4. MEDEVAC A/C: Order thru ATGS or JDIDC EMS Rotor A/G: VMED29 155.3475 Tx/Rx, Tone 156.7 Tx/Rx 38HX COMM: A/A Primary A/G Primary</p>	<p>5. TFR #2/8108 & 2/8109 Surface to 11,000' MSL 7NM Radius</p>
---	---	---

6. PERSONNEL	LWD	Phone	7. FREQUENCIES			8. FIXED-WING	# Avail / Type/ Make-Model / FAA N# / Base(s)
			AIR/AIR Primary	AM	FM		
AOBD: Paul Balfour O-61.43		509-993-8739		123.6250 (A8)		Fixed Wing/Buckets	DIVS order thru ATGS if up, or Communications
ASGS: Tim Lyda O- 61.44 9/8		541-761-2676	AIR/AIR Secondary	128.2250 (A39)			
HEBM: Tyler Davis (T) 9/7		360-220-5359	AIR/GRD Primary		167.0750 (A11)	ATGS Aircraft	(A-2) N3NT AC690D Jeremy Cowie or Relief Rob Rosetti LATs Order through Air Attack/AOBD Or JDIDC
HEMG:			AIR/GRD Secondary		169.7125 (A41)		
ATGS: Jeremy Cowie		541-575-3736	AIR/GRD IA Primary		167.3750		
ATGS:			AIR/GRD IA Secondary		168.6375		
JDIDC:		541-575-3110	UNICOM	122.800		NOTES:	Grant Co Regional Airport, Haley Walker 541-575-1151 or 530-567-5987 email cost: jdairbase@gmail.com
			DECK	163.1000			

9. HELICOPTERS

FAA N#	TY	MAKE/MODEL	BASE	START	AVAIL	REMARKS	FAA N#	TY	MAKE/MODEL	BASE	START	AVAIL	REMARKS
519FF	3	A Star B3	John Day	0800	0830	A-13, Helitack ,Medivac Buckets	462WY	1	CH-46	John Day	0800	0830	A-7 Bucket
38HX	3	AS-350 A Star	Baker	0800	0830	A-63 Short Haul/Buckets	448JS	1	S-61	John Day	0800	0830	A-22 Bucket
17HX	2	Bell 205++	John Day	0800	0830	A-102 Buckets/Helitack Crew 10 personnel	625CK	1	S-61	John Day	0800	0830	Tanked A-62
							83BH	1	UH-60	John Day	0800	0830	Bucket A-29

INCIDENT RADIO COMMUNICATIONS PLAN (ICS 205)

Controlled Unclassified Information//Basic

1. Incident Name:	2. Date/Time Prepared:	3. Operational Period: DAY	
CROCKETS KNOB	Date: 09/04/2022 Time: 2000	Date/Time From: 09/05/2022 0600 MON	Date/Time To: 09/05/2022 1800 MON

4. Basic Radio Channel Use:										
Zone Group	Ch #	Function	Channel Name/Trunked Radio System Talkgroup	Assignment	RX Freq	RX Tone/NAC	TX Freq	TX Tone/NAC	Mode (A,D, or M)	Remarks
	1	COMMAND	CMD 1	ALL DIVS	170.4250	131.8	168.0750	131.8	A	NORTH - INDIAN ROCK LO
	2	COMMAND	CMD 2	ALL DIVS	170.4125	131.8	165.9625	131.8	A	SOUTH - DIXIE BUTTE LO
	3	COMMAND	CMD 3	ALL DIVS	171.5375	131.8	166.3625	131.8	A	RESERVED FOR FUTURE USE
	4	TACTICAL	TAC 4	DIV A	168.0500	131.8	168.0500	131.8	A	
	5	TACTICAL	TAC 5	DIV E	168.2000	131.8	168.2000	131.8	A	
	6	TACTICAL	TAC 6	DIV M	168.6000	131.8	168.6000	131.8	A	
	7	TACTICAL	TAC 7	DIV G / CONTING	166.7250	131.8	166.7250	131.8	A	DIVISION G / CONTINGENCY
	8	TACTICAL	TAC 8	DIV S / Z	166.7750	131.8	166.7750	131.8	A	DIVISION S / Z
	9	TACTICAL	TAC 9	STRUCTURE / IA	168.2500	131.8	168.2500	131.8	A	STRUCTURE / IA
	10	COMMAND	N DIXIE	ALL DIVS	172.4000	131.8	166.2000	123.0	A	IA / BACKUP IF CMD NET INOP
	11	TACTICAL	MAF TAC	IA	168.3125	131.8	168.3125	131.8	A	IA ONLY
	12	AIR TO GROUND	A/G 38	MALHEUR	167.3750		167.3750		A	A/G FOR MALHEUR N.F.
	13	AIR TO GROUND	A/G PRI	ALL DIVS	167.0750		167.0750		A	AIR OPS ONLY
	15	AIR TO GROUND	VMED 29	ALL DIVS	155.3475	156.7	155.3475	156.7	A	MEDICAL EVAC ONLY
	14	AIR TO GROUND	A/G SEC	ALL DIVS	169.7125		169.7125		A	AIR OPS ONLY
	16	AIR GUARD	AIRGUARD	ALL DIVS	168.6250		168.6250	110.9	A	EMERGENCY AIR OPS ONLY

5. Special Instructions: COMMUNICATIONS (208) 891-8093

6. Prepared By (Communications Unit Leader)	Name: MISSY PARKER	Signature: <i>Missy Parker</i>
ICS 205	IAP Page	Date/Time: 09/04/2022 2000

Controlled Unclassified Information//Basic

Needles of five, keep it alive!

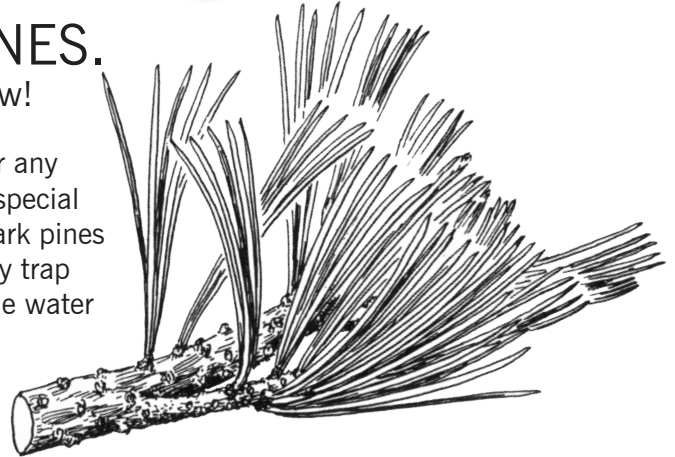
Please do not cut WHITEBARK PINES.

If a tree's needles grow in clusters of five, leave it to grow!

Whitebark pines live in the mountains, often in areas too harsh for any other tree. More than 100 kinds of living things depend on these special pines, including bears and many bird species. People love whitebark pines for their beauty and strength, and we also need them because they trap snow in the high country, slowing spring runoff and helping provide water to the valleys in summer.

But whitebark pines are in trouble. Many whitebark forests now contain more dead pines than living ones.

- Blister rust, a non-native fungus, weakens the trees, reduces cone production, and eventually causes death.
- Whitebarks are also killed by bark beetles, and beetle epidemics may increase with global climate change.
- Wildfires may kill whitebark pines, although burned areas are good habitat for seedlings. Careful management of fire is essential.



So remember: *If it has five, let's keep it alive!*

For more information and to learn how you can help,
visit the Whitebark Pine Ecosystem Foundation at www.whitebarkfound.org.

THREE DAY DEMOB LIST

Monday 9-5-22

EQUIPMENT

E-3	0800	(ENG6)	GRAYBACK FORESTRY
E-66	0830	(WTS2)	1-A CONSTRUCTION & FIRE

OVERHEAD

O-35	0700	(HMGB)	JONES, SHANNON
O-14	1830	(HEQB)	SCHULZ, NICHOLAS
O-15	1845	(HEQB)	KIENZLE, AARON C
O-21	1900	(TFLD)	CEARNS, MICHAEL
O-1	2000	(FMOD)	PETTYJOHN
O-3	2015	(FMOD)	WEBB

Tuesday 9-6-22

EQUIPMENT

E-7	0700	(DZR2)	COUGAR RIDGE CONSTR D2
-----	------	--------	------------------------

OVERHEAD

O-61.72	0600	(SPUL)	FRATER, THEODORE MATHEW
O-61.82	0600	(SOF2)	WALLER, DONALD
O-27	0630	(REAF)	MONZULLA, RYAN A
O-16	1900	(HEQB)	FISHER, THOMAS
O-20	1930	(HEQB)	STOKES, DUANE K

Wednesday 9-7-22

EQUIPMENT

E-27	0700	(AMB1)	CASCADE MEDICAL TRANSPORT
E-29	0900	(MBM2)	MORRIS FORESTRY LLC - 834891
E-82	1730	(ENG6)	AK-KKS K-62
E-83	1730	(ENG6)	FAIRBANKS 65
E-84	1745	(ENG6)	FAIRBANKS 66
E-85	1745	(ENG6)	FAIRBANKS 67
E-86	1800	(ENG6)	ALASKA STRIKE TEAM M-68

OVERHEAD

O-119	1800	(TFLD)	STILLIE, BRITTANY
O-66	1900	(HMGB)	COLLINS, JACOB LEWIS
O-26	1915	(DIVS)	MILLER, ERIC

Crocketts Knob Fire DEMOB Procedures

1. Complete CTRs and follow Finance IAP Message.
2. Return any checked-out equipment and/or radios.
3. All Contractors complete Ground Support inspection at Taylor Flats.
4. ALL VEHICLES MUST GO THROUGH THE WEED WASH LOCATED JUST WEST OF PRAIRIE CITY – FOLLOW SIGNAGE.
5. Contact DEMOB at 509-432-6143 to finalize process.
DEMOB Email: 2022.crockettsknob.demob@firenet.gov

NOTE: All air travelers need to contact DEMOB to make arrangements 72 hours prior to departure.



Crockets Knob Fire Information 541-625-0892



2022.crocketsknob@firenet.gov

<https://www.facebook.com/CrocketsKnobFire>

<https://inciweb.nwccg.gov/incident/8355/>

Talking Points

- The Crockets Knob fire is being controlled using a Full Suppression Strategy with Public and Firefighter Safety and value protection as top priorities.
- Firefighters have been using mapping technology to accurately locate and identify structures, values, and hazards that may be impacted by the fire as well as landmarks that may be useful in fighting the fire.



Human Resource Message



Crocketts Knob Fire – September 5, 2022

Labor Day was established as a federal holiday to honor and recognize the American labor movement and the works and contributions of laborers to the development and achievements of the United States.

Thank you all for being here and thank you for your dedication and service. We recognize and appreciate the hard work you have done on this fire. Keep up the good work and stay safe!



Quote for the day: “No work is insignificant. All labor that uplifts humanity has dignity and importance and should be undertaken with painstaking excellence.” -Martin Luther King, Jr.

**Susie Manezes, NW Team 12 HRSP, Contact:602-571-9327
Jon Tipton, NW Team 12 HRSP, Contact: 971-347-7314**



Logistics Message Crockets Knob Fire

ICP @ 740 Overholt St, Prairie City Oregon 97869

Lead Medical Unit Diana Braun Phone 509-348-0091 or by Radio on CMD Channel

Communications: Crockets Knob ICP
24-Hours
Phone: **208-891-8093**

Meal Service Hours: Breakfast/Lunch at 0700
Dinner at 1800

**** Note:** Meal count changes need to be submitted to BCMG Tully Pritchett
4 hours prior to delivery time.

Shower Hours: 0430 to 1200
1400 to 2130

Taylor Flats Base Camp

4.5 miles North of Hwy 26 and Hwy 7 Junction on Hwy 7

Supply: 0630-2130

All 'S'# orders

call or text Jeremy Marquardt at 360-880-4244

or

email jeremy.marquardt@DNR.WA.GOV

Meals: Breakfast 0500-0900; Dinner 1800-2200

Showers: 0500-1200 and 1600-2200

Ground Support: 0600-2130

Medical Support : 0530-2130



Finance Message



Finance Email: 2022.crocketsknob.finance@firenet.gov

SUBJECT: *Include Key Word* **TIME** for Overhead, Crews & Cooperators

SUBJECT: *Include Key Word* **EQUIPMENT** for Contract Resources

Finance Contact Numbers

PERSONNEL: 509-823-6642

EQUIPMENT: 208-890-4869

Finance Section Chief: 509-423-6011

Please Scan this QR code to send all required documents to finance or use the email below



FINANCE CHECK IN: 2022.crocketsknob.finance@firenet.gov

PLEASE ENSURE THE BELOW DOCUMENTS ARE EMAILED

Overhead, Crews & Cooperator Resources	Contract Resources
<ul style="list-style-type: none"> • Check-In: Crew Manifest, Cooperative Agreement (if applies), AD Hire Letter, Resource Order • Daily: Crew Time Report (CTR), Shift Tickets • Demob: Signed OF288, Final Equipment Use Invoice (Cooperator) If you don't have a way to sign you must come to finance. 	<ul style="list-style-type: none"> • Check-In: Resource Order, Contract/VIPR Agreement (make sure you have your UEI, Pre-Inspection • Daily: Shift Tickets, receipts (fuel issues, claims, etc.) • Demob: Contractor Evaluations, Final Shift Tickets and receipt(s) for Addition/Deductions, Post-Inspection, Final Signed Invoices If you don't have a way to sign you must come to finance

REMINDERS

- ★ PLEASE ENSURE YOU INCLUDE LOCATION OF WHERE YOU ARE WORKING (BRANCH OR DIVISION) ON CTR OR SHIFT TICKET. MAKE SURE C OR E # IS ON THE CTR OR SHIFT TICKET
- ★ PLEASE SHOW YOUR LUNCH BREAK
- ★ PLEASE USE MILITARY TIME (0001-2400)
- ★ WHEN CLAIMING HAZARD PAY YOU MUST INCLUDE THE SUPPRESSION ACTION BEING PERFORMED. THIS INCLUDES OPERATIONS WHICH DIRECTLY SUPPORT CONTROL OF FIRE (E.G., ACTIVITIES TO EXTINGUISH THE FIRE, FIREFIGHTING, GROUND SCOUTING, SPOT FIRE PATROLLING, SEARCH AND RESCUE OPERATIONS, AND BACKFIRING).
- ★ WHEN SIGNING YOUR OF-288 or OF-286 PLEASE DO NOT LOCK IT or PROTECT THE SIGNATURE, WE HAVE TO BE ABLE TO SIGN IT AND SEND YOU A COPY

Crocketts Knob ORMAF-022199

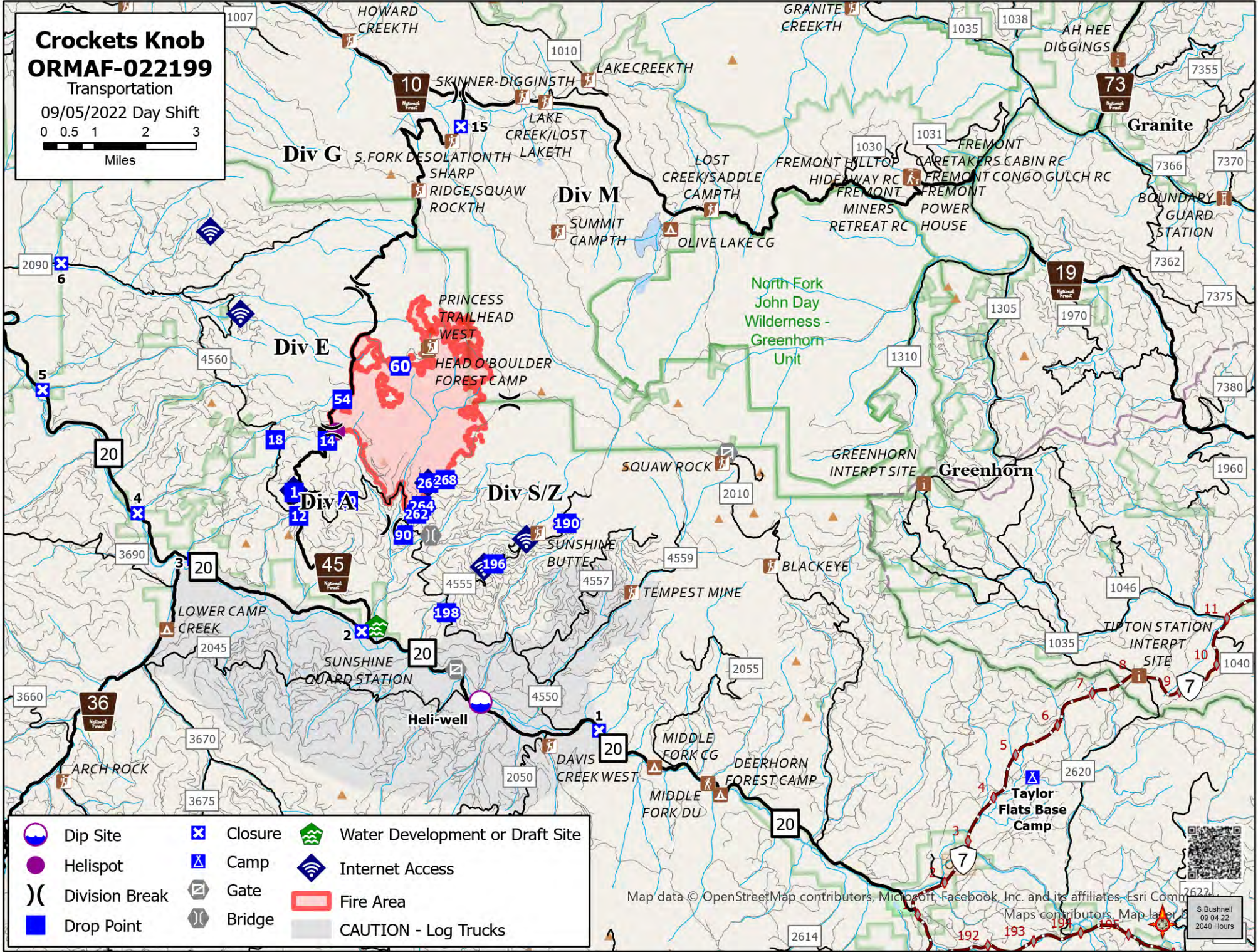
Transportation

09/05/2022 Day Shift

0 0.5 1 2 3



Miles



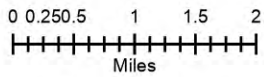
Map data © OpenStreetMap contributors, Microsoft, Facebook, Inc. and its affiliates, Esri Company, and other map contributors. Map last updated 09/04/22 2040 Hours

118°49.5'W 118°48.5'W 118°47.5'W 118°46.5'W 118°45.5'W 118°44.5'W 118°43'W 118°42'W 118°41'W 118°40'W 118°39'W 118°38'W 118°37'W 118°36.01'W 118°35'W 118°34'W 118°33'W

Crocketts Knob ORMAF-022199 IAP Map

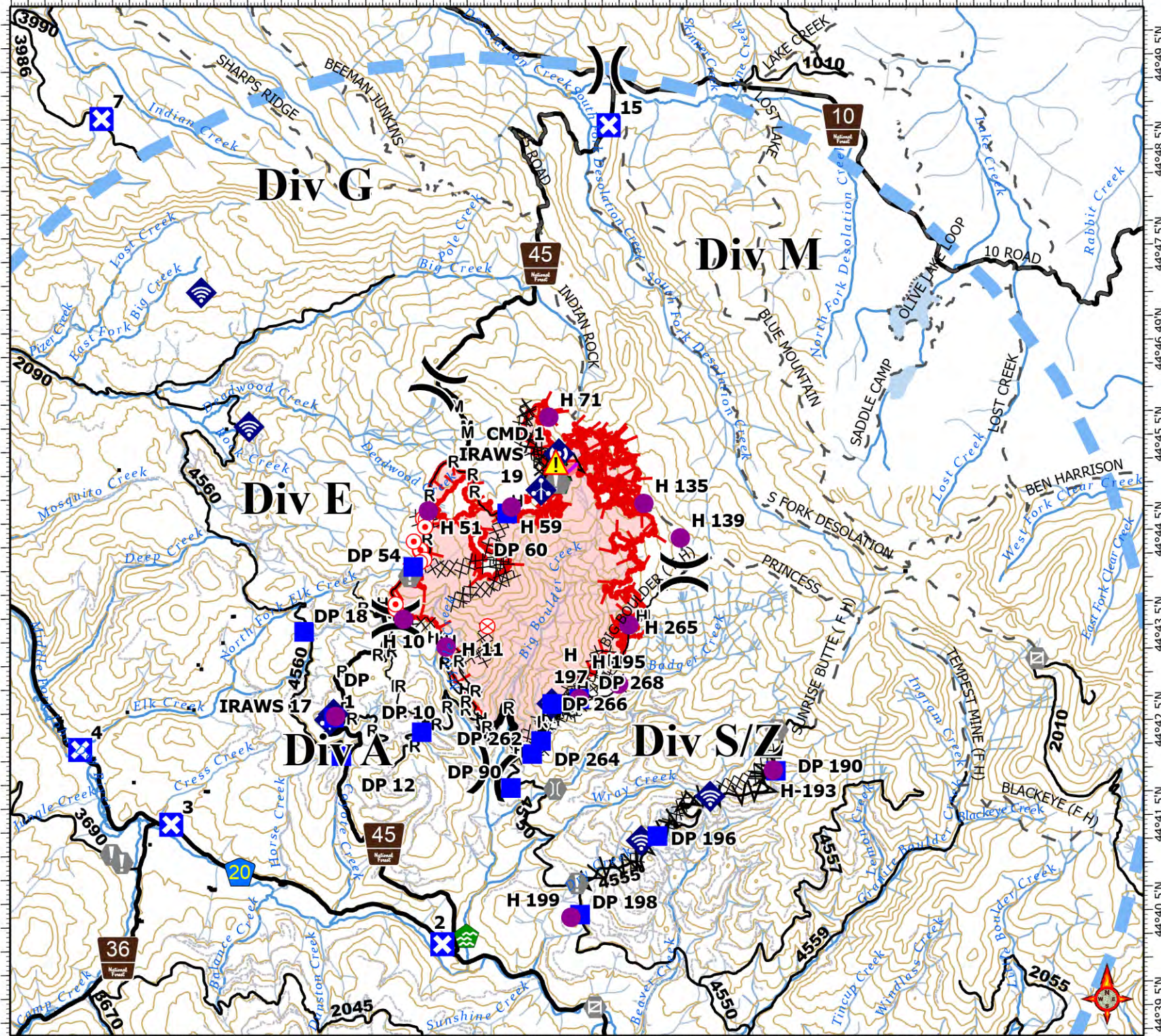
09/05/2022 Day Shift
4280 acres at 09/03/2022 @ 2142

- Dip Site
- Helispot
- Division Break
- Drop Point
- Closure
- Hot Spot - Spot Fire
- Fire Origin
- Value at Risk
- Gate
- Bridge
- Water Development or Draft Site
- Structure Wrap
- Resource Location
- Mobile Weather Unit
- Internet Access
- Repeater
- Hazard
- Completed Dozer Line
- Completed Fuel Break
- Completed Hand Line
- Completed Mixed Construction Line
- Completed Road as Line
- Retardant Drop
- Temporary Flight Restriction
- Contained
- Uncontained
- Fire Area



S. Bushnell
09 04 22
2035 Hours

Acres from IR and sketch
Datum: North American 1983



118°49.5'W 118°48.5'W 118°47.5'W 118°46.5'W 118°45.5'W 118°44.5'W 118°43'W 118°42'W 118°41'W 118°40'W 118°39'W 118°38'W 118°37'W 118°36.01'W 118°35'W 118°34'W



Coordinate Table

FC Point Type	Label	Latitude WGS84 DDM	Longitude WGS84 DDM
Camp	Taylor Flats Base Camp	44° 37.492' N	118° 27.375' W
Closure	1	44° 38.473' N	118° 37.716' W
Closure	15	44° 48.847' N	118° 40.688' W
Closure	2	44° 40.261' N	118° 43.341' W
Closure	3	44° 41.562' N	118° 47.318' W
Closure	4	44° 42.362' N	118° 48.647' W
Closure	5	44° 44.507' N	118° 50.862' W
Closure	6	44° 46.660' N	118° 50.349' W
Closure	7	44° 48.997' N	118° 48.192' W
Closure	8	44° 51.052' N	118° 48.674' W
Dip Site	Heli-well	44° 39.010' N	118° 40.536' W
Drop Point	DP 1	44° 42.662' N	118° 44.886' W
Drop Point	DP 10	44° 42.495' N	118° 43.594' W
Drop Point	DP 12	44° 42.257' N	118° 44.787' W
Drop Point	DP 18	44° 43.570' N	118° 45.308' W
Drop Point	DP 190	44° 42.027' N	118° 38.372' W
Drop Point	DP 196	44° 41.363' N	118° 40.138' W
Drop Point	DP 198	44° 40.550' N	118° 41.299' W
Drop Point	DP 262	44° 42.246' N	118° 41.967' W
Drop Point	DP 264	44° 42.383' N	118° 41.834' W
Drop Point	DP 266	44° 42.770' N	118° 41.659' W
Drop Point	DP 268	44° 42.820' N	118° 41.260' W
Drop Point	DP 54	44° 44.234' N	118° 43.682' W
Drop Point	DP 60	44° 44.781' N	118° 42.280' W
Drop Point	DP 90	44° 41.893' N	118° 42.291' W
Helibase		44° 24.076' N	118° 57.727' W
Helispot	H-193	44° 42.035' N	118° 38.409' W
Helispot	H 10	44° 43.684' N	118° 43.835' W
Helispot	H 11	44° 43.387' N	118° 43.214' W
Helispot	H 135	44° 44.863' N	118° 40.257' W
Helispot	H 139	44° 44.494' N	118° 39.727' W
Helispot	H 15	44° 42.675' N	118° 44.864' W
Helispot	H 195	44° 42.968' N	118° 40.675' W
Helispot	H 197	44° 42.820' N	118° 41.260' W
Helispot	H 199	44° 40.523' N	118° 41.434' W
Helispot	H 265	44° 43.588' N	118° 40.508' W
Helispot	H 51	44° 44.821' N	118° 43.445' W
Helispot	H 59	44° 44.848' N	118° 42.216' W
Helispot	H 71	44° 45.787' N	118° 41.642' W
Incident Command Post	Prairie City	44° 27.285' N	118° 42.554' W
Internet Access		44° 42.720' N	118° 41.769' W
Internet Access		44° 42.698' N	118° 44.894' W
Internet Access		44° 41.317' N	118° 40.378' W
Internet Access		44° 41.771' N	118° 39.349' W
Internet Access		44° 45.733' N	118° 46.076' W
Internet Access		44° 47.152' N	118° 46.753' W

COVID-19 Mitigations for Crockets Knob Fire

- Masks are not required indoors unless working in a county with a HIGH COVID-19 community level. Currently, Grant County community level is MODERATE (masking indoors is optional).
- Conduct daily verbal screening checks within crews, report any COVID-like symptoms to your direct supervisor. Supervisors should report any positive symptoms to the Medical Unit for next steps.
- Observe social distancing standards while waiting in line for food and limit contact with others outside of your crew in the food service line. If possible, send crew representatives to pick up meals.
- Practice good personal hygiene, wash hands frequently and disinfect high-traffic areas on a regular basis.
- Limit close contact between firefighters and the public as much as possible to prevent exposure and spread.





EMERGENCY PLAN INCIDENT WITHIN AN INCIDENT

ON SCENE INCIDENT COMMANDER

In the event of an accident or medical incident of any size, your primary responsibility is to ENSURE that the victim(s) receive prompt and effective Triage, Treatment, Extrication and Transport.

- **ENSURE THE MEDICAL INCIDENT REPORT IN THE INCIDENT ACTION PLAN IS BEING USED AND FOLLOWED- *IF DETERMINED TO BE A GREEN, DO NOT DECLARE EMERGENCY TRAFFIC AND ONLY COMPLETE LINE 1-4 ON MIR*.**
- Conduct size-up of the incident nature of accident, number type of resources involved, latitude and longitude location (DD°MMM.MM format): notify incident communications center and supervisor, request assistance as needed.
- Order and coordinate medical and support response to the accident.
- Evaluate special needs (law enforcement, haz mat, etc.).
- Clear the command frequency if medical emergency, coordinate with incident communications and air attack for air medical transportation needs.
- Preserve and photograph the scene for accident investigation.
- Remain aware of surroundings and the status of the main incident (delegate personnel to monitor the main fire) to ensure safety of medical treatment personnel.
- Until relieved, supervise and manage all personnel involved at the incident scene.

MEDICAL PLAN (ICS 206 WF)

Incident/Project Name		1. Operational Period						
Crockets Knob		September 5, 2022 0600-1800						
2. Ambulance Services								
Name	Complete Address	Phone	Advanced Life Support (ALS)					
			Yes	No				
Blue Mountain Ambulance	170 Ford Rd John Day, OR	Command/911	X					
3. Air Ambulance Services								
Name	Phone	Location						
Life Flight Network	Command/911	20-30 min flight - LaGrande, OR						
Life Flight Network	Command/911	Pendleton, OR						
4. Hospitals								
Name Complete Address	Coordinate Standard Degrees Decimal Minutes DD° MM.MMM' N - Lat DD° MM.MMM' W - Long		Travel Time From Crockett's Knob Air Gnd		Phone	Helipad Yes No		Level of Care Facility
	Lat:	Long:						
Blue Mountain Hospital 170 Ford Rd John Day, OR	44°25.06' N	118°57.60' W	20 mins	1.5 hrs	541-575-1311	X		Level 4
St Charles Medical Center 2500 NE Neff Rd Bend, OR	44°4.1667' N	121°16.0833' W	1 hr	4 hrs	541-882-6311	X		Level 2
Legacy Emanuel 2801 N Gantenbien, Portland, OR	45°32.616' N	122°6695' W	2 hrs	5 hrs	503-413-4321	X		Level 1 Trauma Burn Center
St Alphonsus Medical Center 3325 Pocahontas Rd Baker City, OR	44°52.1108' N	117°51.1856' W	45 mins	1.75 hrs	541-523-6461	X		Level 2
	118°48.4346' W							
5. Division Branch Group	Capability			Personnel				
Div. A				(E-27) Ambo 1 (O-96) Medic 4 (O-93) Medic 2				
Div. E				(O-94) Medic 1 (O-7) EMT (E-87) Blackwoods REM				
Div. M				Utilize nearest medical resource				
Div. S/Z				(O-9) REM 9 (E-51) Ambo 2				
Div. G				Utilize nearest medical resource				
Contingency				(O-95) Medic 3				
Taylor Flats/Bates SP				(E-88) Ambo 3				
6. Prepared By (Medical Unit Leader)			7. Date/Time	8. Reviewed By (Safety Officer)			9. Date/Time	
Diana Braun			09/04/2022 1800	Jack Cates <i>Jack Cates</i>			09/04/2022 1800	

Short-Haul Operations

CAPABILITIES

- During an operational Short-Haul the helicopter is capable of inserting Short-Haulers into an area with tight canopy cover and/or technical terrain.
- Haul line lengths range from 100 feet to 350 feet.
- Short hauler and/or medical gear can be delivered to the medical scene even if extraction by short-haul is not necessary.

ORDERING

- EMT or Medical Incident IC determines medical extraction is required.
- Follow local established procedures and/or Medical Incident Report (MIR) in the IRPG.
- Confirm aircraft type, call sign, estimated time of arrival and frequency.
- Give site selection information when ordering: hazards (i.e. ash, smoke, snags, aerial), tree height, terrain, and patient transport configuration (supine or seated position). Repeat hazards and give updated weather conditions as well as brief patient update to responding helicopter.

PROCESS: The helicopter will fly to the coordinates provided. They will make contact with ground personnel on scene with the patient using an identified air-to-ground frequency. The helicopter will complete a short-haul recon and size up, gather patient update information and then fly to a landing zone (LZ) to configure for short-haul operations. The helicopter will be monitoring the appropriate air-to-ground, air guard and victor frequencies. From this point, ground resources should only contact the helicopter in case of an emergency. During the insertion and extraction process ground personnel must be clear of the area.

ON SCENE: EXPECT THE FOLLOWING

- 1 or 2 rescuers (at least one qualified as an EMT or higher)
- Backboard (if needed and not already on scene)
- All equipment necessary for patient extraction

The Patient Extraction Bag accommodates most backboards.
-A patient on a backboard, TRS, SKED or litter will be inserted into the bag.



The Seat Harness is used for patients not requiring the use of a backboard.



IAP INSERT

MEDICAL PLAN (ICS 206 WF)

Controlled Unclassified Information//Basic

Medical Incident Report

FOR A NON-EMERGENCY INCIDENT, WORK THROUGH CHAIN OF COMMAND TO REPORT AND TRANSPORT INJURED PERSONNEL AS NECESSARY.

FOR A MEDICAL EMERGENCY: IDENTIFY ON SCENE INCIDENT COMMANDER BY NAME AND POSITION AND ANNOUNCE "MEDICAL EMERGENCY" TO INITIATE RESPONSE FROM IMT COMMUNICATIONS/DISPATCH.

Use the following items to communicate situation to communications/dispatch.

1. CONTACT COMMUNICATIONS / DISPATCH (**Verify correct frequency prior to starting report**)
Ex: "Communications, Div. Alpha. Stand-by for Emergency Traffic."
2. INCIDENT STATUS: *Provide incident summary (including number of patients) and command structure.*
Ex: "Communications, I have a Red priority patient, unconscious, struck by a falling tree. Requesting air ambulance to Forest Road 1 at (Lat./Long.) This will be the Trout Meadow Medical, IC is TFLD Jones. EMT Smith is providing medical care."

Severity of Emergency / Transport Priority	<input type="checkbox"/> RED / PRIORITY 1 Life or limb threatening injury or illness. Evacuation need is IMMEDIATE <i>Ex: Unconscious, difficulty breathing, bleeding severely, 2° – 3° burns more than 4 palm sizes, heat stroke, disoriented.</i> <input type="checkbox"/> YELLOW / PRIORITY 2 Serious Injury or illness. Evacuation may be DELAYED if necessary. <i>Ex: Significant trauma, unable to walk, 2° – 3° burns not more than 1-3 palm sizes.</i> <input type="checkbox"/> GREEN / PRIORITY 3 Minor Injury or illness. Non-Emergency transport <i>Ex: Sprains, strains, minor heat-related illness.</i>	
Nature of Injury or Illness & Mechanism of Injury		<i>Brief Summary of Injury or Illness (Ex: Unconscious, Struck by Falling Tree)</i>
Transport Request		<i>Air Ambulance / Short Haul/Hoist Ground Ambulance / Other</i>
Patient Location		<i>Descriptive Location & Lat. / Long. (WGS84)</i>
Incident Name		<i>Geographic Name + "Medical" (Ex: Trout Meadow Medical)</i>
On-Scene Incident Commander		<i>Name of on-scene IC of Incident within an Incident (Ex: TFLD Jones)</i>
Patient Care		<i>Name of Care Provider (Ex: EMT Smith)</i>

3. INITIAL PATIENT ASSESSMENT: *Complete this section for each patient as applicable (start with the most severe patient)*

Patient Assessment: See IRPG page 106

Treatment:

4. TRANSPORT PLAN:

Evacuation Location (if different): *(Descriptive Location (drop point, intersection, etc.) or Lat. / Long.)* Patient's ETA to Evacuation Location:

Helispot / Extraction Site Size and Hazards:

5. ADDITIONAL RESOURCES / EQUIPMENT NEEDS:

Example: Paramedic/EMT, Crews, Immobilization Devices, AED, Oxygen, Trauma Bag, IV/Fluid(s), Splints, Rope rescue, Wheeled litter, HAZMAT, Extrication

6. COMMUNICATIONS: Identify State Air/Ground EMS Frequencies and Hospital Contacts as applicable

Function	Channel Name/Number	Receive (RX)	Tone/NAC *	Transmit (TX)	Tone/NAC *
COMMAND					
AIR-TO-GRND					
TACTICAL					

7. CONTINGENCY: **Considerations:** *If primary options fail, what actions can be implemented in conjunction with primary evacuation method? Be thinking ahead.*

8. ADDITIONAL INFORMATION: *Updates/Changes, etc.*

REMEMBER: Confirm ETA's of resources ordered. Act according to your level of training. Be Alert. Keep Calm. Think Clearly. Act Decisively.

Controlled Unclassified Information//Basic