

# Incident Action Plan

# **CROCKETS**

# **KNOB**



September 7<sup>th</sup>, 2022  
Operational Period  
0600-1800



**OR-MAF-022199**  
**P6 POXK (0604)**  
**221 IWR**

**SCAN QR CODE**  
For  
**BRIEFING LINK**  
**DOWNLOAD IAP**  
**DOWNLOAD MAPS**  
Send in **PHOTOS**  
**CHECK-IN**  
Submit **TIME** to **FINANCE**

This page intentionally left blank.





## ORGANIZATION ASSIGNMENT LIST (ICS 203)

<b>1. Incident Name:</b>		<b>2. Operational Period:</b> DAY	
CROCKETS KNOB		Date/Time From: 09/07/2022 0600 WED	Date/Time To: 09/07/2022 1800 WED
<b>3. Incident Commander(s) and Command Staff:</b>		<b>7. Operations Section:</b>	
IC/UC	JEFF DIMKE JEFF BOUSCHOR (T)	SUPPLY UNIT	JOHN KAUPA THAD FRATER (T)
DEPUTY	BOB SHINDELAR	GROUND SUPPORT UNIT	DAVE HARSH
SAFETY OFFICER	TROY CORN; JACK CATES	COMMUNICATIONS UNIT	MISSY PARKER JOHN LYONS (T)
INFORMATION OFFICER	JOEL BRUMM LIV STECKER	MEDICAL UNIT	EAMONN RYAN DIANA BRAUN
LIAISON OFFICER	SCOTT CRAWFORD JEFF SEVIGNEY (T)	SECURITY UNIT	TOM TAYLOR JOE ROBERTSON (T)
HUMAN RESOURCE SPECIALIST	SUSIE MANEZES (ICP) JON TIPTON (TF)	FOOD UNIT	ALEX LILLA
<b>4. Agency/Organization Representative(s):</b>		OPS SECTION CHIEF	AARON ROWE JEROMY WILSON (T)
<b>Agency/Organization</b>	<b>Name</b>	PLANNING OPS	KURT RANTA CODY ACORD (T)
USFS - MALHEUR	ANN NIESEN CRAIG TRULOCK	STRATEGIC OPS	TONY ENGEL
USFS - MALHEUR	JOSHUA GILES	STAGING AREA	
USFS - UMATILLA	STEPHANEY KERLEY		
ODF	ALLISON RAYBURN	DIVISION/GROUP	A BOB HINDS IAN MCCORD (T)
LEAD READ	MATT SMITH (T)	DIVISION/GROUP	E JON STONELAKE ANDREW STINCHFIELD (T)
INTERAGENCY RESOURCE REPRESENTATIVE	PAUL GIBBS 951-903-4135	DIVISION/GROUP	G DJ GOLDSMITH
<b>5. Planning Section:</b>		DIVISION/GROUP	M BRAD BRYANT
CHIEF	JILL JOHNSON	DIVISION/GROUP	S/Z LARRY LEACH
DEPUTY	ERIC BLACK HOWARD JOHNSON (VIRTUAL)	DIVISION/GROUP	CONTINGENCY EZRA BUTTERFIELD
RESOURCES UNIT	MARGE HUTCHINSON	DIVISION/GROUP	STRUCTURE/IA JIM WALKOWSKI
SITUATION UNIT			
DOCUMENTATION UNIT	DEIDRE SMITH (VIRTUAL)	<b>7b. Air Operations Branch:</b>	
DEMOBILIZATION UNIT	MIKE HESTON (VIRTUAL)	AIR OPS BRANCH DIRECTOR	PAUL BALFOUR
FIRE BEHAVIOR ANALYST	DON STRAND	AIR SUPPORT SUPERVISOR	TIM LYDA
TRAINING SPECIALIST			
GIS SPECIALIST	SHAWN BUSHNELL		
TECHNOLOGY SUPPORT SPECIALIST	GEORGE JENKINS BRADLEY DILG	<b>8. Finance/Administration Section:</b>	
INCIDENT METEOROLOGIST	DEREK WILLIAMS JAMES WHITE (T)	CHIEF	CHERI FULLER
<b>6. Logistics Section:</b>		DEPUTY	CHRISTINA GOEBEL
CHIEF	KEVIN HAUGHTON (TAYLOR FLATS) PAUL FOOTEN (ICP) (T)	TIME UNIT	STEVE CROW
FACILITIES UNIT	LEE VENNING (TAYLOR FLATS) RICHARD CROWTHER (ICP)	PROCUREMENT UNIT	MARK BOHNET
BASE CAMP MANAGER	TULLY PRITCHETT(ICP) KARA DOESCHER (TAYLOR FLATS) (T)	INCIDENT CONTRACT PROJ INSP	ROB HECHINGER
		COST UNIT	KAY HIGH (VIRTUAL)
<b>9. Prepared By:</b>	<b>Name:</b> MARGE HUTCHINSON	<b>Position/Title:</b> RESL	<b>Signature:</b> <i>Marge Hutchinson</i>
ICS 203	IAP Page	<b>Date/Time:</b> 09/06/2022 2000	



# Fire Weather Forecast

**FORECAST NO:** 11  
**PREDICTION FOR:** Wednesday-Thursday  
**DATE:** September 7<sup>th</sup> – 8<sup>th</sup>, 2022  
**FORECAST ISSUED:** 2000 September 6<sup>th</sup>, 2022

**Fire:** Crockets Knob  
**UNIT:** OR-MAF-022199  
**Incident Meteorologist:** James White (T)  
**Signed:** *James White*

**WEATHER DISCUSSION: \*\*\* RED FLAG WARNING FOR HOT, DRY, WINDY, AND UNSTABLE CONDITIONS \*\*\***

Poor recoveries and warm temperatures this morning will give way to another very hot and dry day. High temperatures will again be much above average with low elevation temperatures in the mid-90s. RH will be very dry around 15% across the fire. A weak inversion alongside unstable conditions will allow winds to quickly increase as early as 1000. Ridgetop winds will transition to the northwest throughout the day. Gusts could reach above 30 mph late in the afternoon with enhanced winds persisting late into the evening. Mid-level moisture will bring a slight chance of dry thunderstorms and showers throughout the day as early as 0900. Any showers could produce gusty erratic outflow winds above 40 mph.

**TODAY: \*\*\* RED FLAG WARNING FOR HOT, DRY, WINDY, AND UNSTABLE CONDITIONS \*\*\***

**WEATHER:** Windy with slight chance of dry thunderstorms and erratic outflow winds to 40 mph in the afternoon.  
**MAX TEMP:** Valleys: 92-96° (4-7° ↓)      **MIN RH:** Valleys: 12-17% (1-3% ↑)  
Ridgetops: 80-84° (3-6° ↓)      **Ridgetops:** 14-19% (1-3% ↑)  
**CHC WTG RAIN:** 0%      **LAL:** 2      **HAINES:** 5 (Moderate)

**WINDS:** Valleys: Morning downslope winds 3-5 mph. Upslope 9-12 mph gusts 17-20 mph developing after 1000.  
**(20 feet)** Ridgetops: South 4-8 mph in the morning transitioning to the southwest 12-15 mph after 1000, becoming west 14-18 mph with gusts up to 25 - 30 mph late afternoon. Erratic and up to 40 mph near storms.

**MIXING HEIGHT:** Rising to 10,000 feet by 1600.

**TRANSPORT WIND:** West 18-23 mph.

**VISIBILITY:** 7-9 miles.      **INVERSION:** Weak inversion lifting around 1000

**TONIGHT:**

**WEATHER:** Mostly clear. Little to no inversion overnight.  
**MIN TEMP:** Valleys: 50-54° (7-10° ↓)      **MAX RH:** Valleys: 44-49% (2-5% ↑)  
Ridgetops: 52-56° (9-12° ↓)      **Ridgetops:** 37-42% (1-4% ↑)  
**CHC WTG RAIN:** 0%      **LAL:** 1

**WINDS:** Valleys: Downslope and down valley winds of 4-6 mph developing through the night.  
**(20 FEET)** Ridgetops: Northwest winds 5-10 mph transitioning to the North 3-6 mph after midnight.

**TRANSPORT WIND:** Northwest 7 mph.

**THURSDAY:**

**WEATHER:** Mostly clear with increased haze aloft.  
**MAX TEMP:** Valleys: 80-84° (8-12° ↓)      **MIN RH:** Valleys: 10-15% (1-3% ↓)  
Ridgetops: 67-71° (10-14° ↓)      **Ridgetops:** 13-18% (1-3% ↓)  
**CHC WTG RAIN:** 0%      **LAL:** 1      **HAINES:** 4 (Low)

**WINDS:** Valleys: Morning downslope winds 2-4 mph. Upslope 6-10 mph gusts to 16 mph developing after 1200.  
**(20 feet)** Ridgetops: Northwest 4-8 mph in the morning transitioning to the north 10-14 mph with gusts to 20 mph late in the afternoon.

**MIXING HEIGHT:** Rising to 6,000 feet by 1600.

**TRANSPORT WIND:** Northwest 10-15 mph.

**VISIBILITY:** 5-7 miles.      **INVERSION:** Very weak to no inversion

**EXTENDED OUTLOOK: Friday through Monday:** Cooler temperatures are expected with ridgetop temperatures returning to the 70s. Dry air will remain, however, so minimum RHs will likely stay in the upper teens with poor to very poor overnight recoveries. Winds will calm being mostly calm and terrain driven. Moister conditions will arrive along with a chance of light wetting rain early next week.



# FIRE BEHAVIOR FORECAST

FORECAST NUMBER: 10	TYPE OF FIRE: WILDFIRE
FIRE NAME: Crockets Knob	OPERATIONAL PERIOD: Day Shift Sept 7, 2022
DATE ISSUED: Sept 6, 2022	TIME ISSUED: 2000 HOURS
UNIT: OR-MAF	Don Strand NW IMT12 FBAN

## INPUTS

**WEATHER SUMMARY:** See attached weather forecast. **RED FLAG WARNING FOR DRY AND UNSTABLE CONDITIONS.** Chance of dry thunderstorms with gusty and erratic winds with gusts to 40 mph. Max temps – mid to upper 80's min RH near 12%. Winds – upslope 9-12 mph with gusts 17-20 mph after 1000 hrs. Ridgetop winds – Southwest 11 to 14 mph after 1200, becoming west 14 to 18 mph with gusts up to 25 to 30 mph in late afternoon. Haines Index 5 (moderate).

**FUELS:** Fuels consist of brush, dense regeneration with a surface litter of large down wood. The fire area also contains snags and areas with remnant live trees which survived the 1996 fire.

Live fuel moistures in the Ceanothus have lowered and are estimated to be near 95% 1000-hour dead fuel moistures are now 9%. 10-hr and 100-hr fuel moistures are in the critically dry range.

Energy Release Component today is 99<sup>th</sup> percentile.

## OUTPUTS

### FIRE BEHAVIOR

#### GENERAL: HEADS UP FIRE DAY

Increasing fire behavior potential due to humidity in the mid-teens with wind gusts near 30 mph and unstable atmosphere. Chance of dry thunderstorms with gusty and erratic winds with potential for 40 mph gusts.

- In areas of surface fuels of down logs and branch wood, fire behavior will be backing and flanking with low to moderate intensity. Where trees are above the surface fire, single and group torching with downwind spotting across gaps in surface fuels to available fuels (leap frogging) is possible.
- Sub alpine trees are present in the upper elevations and easily torch, producing numerous fire brands.
- Where fire gets in alignment with winds and or slope, short upslope runs in the brush, reproduction and timber stringers are possible. Potential for flare ups exists in areas of dirty burns.
- Spot fires initiate quickly, spread rapidly and are difficult to suppress.

POI: near 90%. Maximum spotting distance 0.75 miles with potential for longer distance with strong wind gusts

Head fire rates of spread in the surface fuels will be 10 to 15 feet/minute. On steeper slopes and with wind gusts, 45 to 60 feet/minute or more.

#### SPECIFIC:

**DIV A/E:** Potential for occasional torching in areas of dirty burns. Pay attention to wind direction for any spotting.

**DIV M:** Increasing ridgetop wind gusts in the afternoon with chance of gusty and erratic winds, so potential for fire spread will continue through the brush and timbered islands with occasional torching, spotting across the sparse grass opening. Any spot that gets established in continuous fuels could make a run.

**DIV Z:** Flare ups with torching in unburned islands and areas of dirty burns is still possible. Westerly winds and possible outflow winds could lead to flare up with short upslope runs and spotting across lines.

**INITIAL ATTACK:** Chance of dry thunderstorms with gusty and erratic winds. Potential for new starts. Any start with winds will initiate quickly and spread rapidly. Light fuels quickly react to winds/slope and changes in wind direction.

**AIR OPERATIONS:** Expect areas of smoke haze/drift in the area.

## SAFETY

Windy today with chance of dry thunderstorms with gusty and erratic winds. These winds have potential to cause flare ups in areas dirty burns followed by increased spotting potential. Snags and fire weakened trees also can be impacted by winds and become overhead hazards. Areas of blowing dust and ash could impair visibility. Strong winds could impact aircraft availability.

# Safety Message

7 September 2022

**INCIDENT: CROCKETS KNOB**

**OPERATIONAL PERIOD: 0600-1800**

## **TOPICS: Mountain Driving**

Driving is one of the most dangerous things we do on any incident, from driving to or from the incident too driving on the fire day after day. Fatigue, smoke, dust, cattle, wildlife, and primitive roads make for challenging conditions. We have had a very good driving safety record on this incident so far. Please review the following tips to continue our great driving record.

1. Place Road guards and signage to control traffic on steep, one way, or narrow roads.
2. Mark roads with mile markers and number both directions. On hazardous or narrow roads place markers at ½ mile.
3. Use Tac channel to call out entering or leaving area.
4. Implement traffic control plans to relieve congestion.
5. Water roads as needed to maintain roads and limit dust.
6. Check shoulders of the road in pull out areas to assess if they are safe.
7. Always drive like you expect to encounter another vehicle.

When meeting a Water Tender or other large vehicle.

\*DO NOT EXPECT the Tender to pass you on the OUTSIDE! Water Tenders weigh 50,000 GVW and the shoulders are soft.

\*Know how to back up to the wide spot, it might be a long way, use your mirrors, the Tenders will wait.

\*When you have pulled off the road for the Tender, stop. The Tender driver will give you a thumbs up or down if he can't get by without scraping paint.

The 45 Road will be signed with a call out system for all travel up and down it. Call outs will be on Tac 4. Monitor Tac, call out when you start up or down, let oncoming traffic know where you are at on the travel route by calling out the Mileage signs as you approach. Give larger vehicles the right of way. If you hear someone coming find a pull out and let the approaching traffic know you are off the road in a safe location.

Always keep your speed down. There have been some reports of some drivers speeding in camp and on the fireline. Practice safe and defensive driving so that we can all see this assignment to the finish.

*Very little on the fire falls up*

SAFETY OFFICER: Troy Corn, Jack Cates

**Deliberate Risk Assessment-Hazard Summary**  
**7 September 2022**

<b>Hazard</b>	<b>Mitigation</b>	<b>Post Risk</b>
Extraction Time	Utilize shorthaul, agency and civilian medivac as treatment/timing dictates. Review ordering procedure for all aircraft. Establish redundant plans for evac if using aircraft. Identify medivac sites and helispots. Initiate ground transport to accident site for transport capability. Identify EMT/EMTP from resources assigned to division. Provide line qualified paramedics to each division as available. Review IWI protocol to ensure familiarity. Evaluate on-going need for repositioning medical personnel. Provide dust abatement on Helispots as needed. Recognize that ground extraction times in North half of fire are long, have plan in place for patient transfer to aviation if Red Medical.	HIGH
Aircraft	Utilize Air Attack. Ensure all resources are a safe distance from all bucket and retardant drops. Establish LCES. Utilize air to ground primary for fixed wing, air to ground 2 for bucket work as needed. Reference IRPG (Safe aircraft operations pg. 61-62). Ensure IA resources have coordination with unassigned local air resources to provide deconfliction.	HIGH
Hazard Trees	Use avoidance to limit exposure time. Fall ahead to avoid exposure. Use qualified fallers or alternate methods if needed. Conduct on-going risk analysis of all new and existing work areas. Follow Hazard Tree Safety Guidelines (IRPG page 20-21).	HIGH
Heavy Equipment	Post lookouts around equipment work areas. Establish communications with equipment boss and operator. Do not work down slope from equipment. Follow agency guidelines for chipping operations.	HIGH
Physical Factors	Maintain hydration schedule. Closely monitor work rate and implement rest periods. Maintain nutrition. Ensure adequate work/rest.	MODERATE
Fire Behavior	Maintain awareness of increased spotting distances with changes in fire weather. Be aware of burn windows and weather impacts and min/max RH for flashy fuels/local conditions. Report changes to FBAN and IMET. Establish MAP for disengagement to provide for an orderly retreat given lack of safety zones. Have a plan for disengagement that establishes a designated meeting point and maintains personnel accountability.	MODERATE
Steep Terrain/Gravity	Do not work crews above or below each other. Post lookouts for rolling material. Watch footing in loose soil, rock and around vegetation. Do not work below heavy equipment. Scout and identify travel routes.	MODERATE
Unburned Fuels/Firing Ops	Maintain awareness fuel dryness levels. Establish LCES. Ensure management action points are implemented and followed. Weather updates as needed during burning operations. Locate indirect firelines to minimize unburned fuels. Follow Interagency Ignition Guide. Ensure communications between all firing operations. Establish road security at all firing sites. Follow approved firing plan for unburned fuels. If utilizing aerial ignitions, make sure firing plan is in place and communicated to all resources and understood. Utilize separate Air to Ground for operation as appropriate.	MODERATE



## Deliberate Risk Assessment-Hazard Summary

7 September 2022

Transportation	<p><b>Sign all incident roads that provide access to divisions to include mile markers and turnouts.</b> Provide daily updated travel plan maps. Practice defensive driving. In local communities obey the posted speed limits in town and recognize the school zone around camp and the presence of children along streets and roadways. Use reader boards to provide advanced warning and control entry to base camp as needed. Identify and evaluate contingency and alternate escape and travel routes. Provide dust abatement and grading as needed. Provide advanced scouting for transport access and bridge weight restrictions. Evaluate road conditions for access, egress, and travel routes to the north of the fire for drivability and safety.</p>	MODERATE
Initial Attack	<p>Ensure identified IA resources are briefed of expectations and ensure communication plan is provided. Ensure resources are briefed on IA command structure. Provide identified crews with area maps.</p>	MODERATE
ATV/UTV	<p>Follow agency specific rules and regulations for proper PPE. Make sure operators are properly licensed and trained. Operate machine to the current and expected conditions. Do not overload machine.</p>	MODERATE
Environmental Factors	<p>Assign medical personnel to camp. Assess for known allergies and report to medical personnel. Obtain Bee Bopper/wasp spray and yellow jacket traps. Maintain an awareness of livestock, wildlife, and rattlesnakes. Identify and report allergies to your chain of command. Work with READs and GISS to evaluate and identify mineshafts.  <b>Refer to IRPG page 17 for thunderstorm safety.</b></p>	MODERATE
Communication	<p>Evaluate for dead zones prior to engagement. Utilize human repeaters as needed. Ensure coverage and accountability of resources in problem areas. Spiking resources must be in cell coverage. 24 staffing at JDICC will serve as a backup. Spike locations relayed to Ops daily.</p>	LOW
Public Interaction	<p>Ensure changes to closures and evacuation levels are fully communicated to incident personnel and the public. Implement area and road closures as necessary. Maintain a lookout for hunters in and out of closure areas. Maintain awareness of evacuation areas and provide accurate information dissemination.</p>	LOW
Viral Transmission Mitigations, Communicable Disease	<p>Maintain awareness of health, perform self-checks, maintain social distancing, wear face coverings in accordance with CDC recommendations. Report and isolate if not feeling well. Establish liaison with Grant County Public Health.</p>	LOW

**Division/Group Assignment List (ICS 204 WF)**  
**Controlled Unclassified Information//Basic**

<b>1. Incident Name:</b>			<b>3.</b>			
CROCKETS KNOB			<b>Branch:</b>		<b>Division/Group</b>	
<b>2. Operational Period:</b> DAY			A			
Date/Time From: 09/07/2022 0600 WED		Date/Time To: 09/07/2022 1800 WED				
<b>4. Operations Personnel</b>						
<b>OPERATIONS CHIEF</b>		AARON ROWE; JEROMY WILSON (T) KURT RANTA; CODY ACORD (T)		<b>DIVISION/GROUP SUPERVISOR</b>		BOB HINDS IAN MCCORD (T)
<b>SAFETY OFFICER</b>		TROY CORN; JACK CATES		<b>AIR OPERATIONS BRANCH DIRECTOR</b>		PAUL BALFOUR
<b>5. Resources Assigned this Period</b>						
Strike Team / Task Force / Resource Designator		LWD	Leader	Number Persons	Drop Off PT./Time	Pick Up PT./Time
O-98 SOFR		09/12	CHRISTOPHER O'BRIEN	1	BASE CAMP/0600	BASE CAMP/1800
O-83 TFLD		09/10	ERIC METZGER	1	BASE CAMP/0600	BASE CAMP/1800
C-15 CRW1 PRESCOTT IHC		09/12	DARIN FISHER	23	GRAVEL PIT SPIKE/0600	GRAVEL PIT SPIKE/1800
C-5 CR2I GRAYBACK FORESTRY NCC 13B		09/15	DAVID BLANCO	18	BASE CAMP/0600	BASE CAMP/1800
C-17 CR2I SRV #10		09/07	MAGDALENO GUARDADO	22	BASE CAMP/0600	BASE CAMP/1800
C-24 CRW2 WEST COAST REFOREST CR07		09/15	BENJAMIN MARTINEZ	20	BASE CAMP/0600	BASE CAMP/1800
E-4 ENG6 GRAYBACK FORESTRY		09/20	ERNIE SMITH	3	BASE CAMP/0600	BASE CAMP/1800
E-39 ENG BIGFOOT		09/09	TRAVIS ALBRECHT	3	BASE CAMP/0600	BASE CAMP/1800
E-60 WTS2 ALL WET TRUCKING		09/10	ALEX WRIGHT	1	BASE CAMP/0600	BASE CAMP/1800
E-61 WTS2 ALL WET TRUCKING		09/10	WILLIAM HOOVER	1	BASE CAMP/0600	BASE CAMP/1800
E-93 WTS2 STORM CARPENTER		09/12	STACY COATES	1	BASE CAMP/0600	BASE CAMP/1800
E-12 UTV KD OUTDOORS			UNSTAFFED		BASE CAMP/0600	BASE CAMP/1800
E-27 AMB1 CASCADE MED TRANSPORT		09/13	BENJAMIN FLORES	2	BASE CAMP/0600	BASE CAMP/1800
O-96 EMPF MEDIC 4 FIRELINE MEDICS		09/11	MATT FREEBORN	1	BASE CAMP/0600	BASE CAMP/1800
<b>8. Division/Group Communication Summary</b>						
Function	Channel	RX Frequency N/W	RX Tone/NAC	TX Frequency N/W	TX Tone/NAC	Mode
COMMAND	1	170.4250	131.8	168.0750	131.8	A
COMMAND	2	170.4125	131.8	165.9625	131.8	A
TACTICAL	4	168.0500	131.8	168.0500	131.8	A
AIR TO GROUND	13	167.0750		167.0750		A
<b>9. Prepared By (Resource Unit Leader)</b>			<b>Approved By (Planning Section Chief)</b>		<b>Date</b>	<b>Time</b>
JILL JOHNSON			MARGE HUTCHINSON		09/06/2022	2000

**Division/Group Assignment List (ICS 204 WF)**  
**Controlled Unclassified Information//Basic**

<b>1. Incident Name:</b>			<b>3.</b>			
CROCKETS KNOB			<b>Branch:</b>		<b>Division/Group</b>	
<b>2. Operational Period:</b> DAY			A			
Date/Time From: 09/07/2022 0600 WED		Date/Time To: 09/07/2022 1800 WED				
<b>4. Operations Personnel</b>						
<b>OPERATIONS CHIEF</b>		AARON ROWE; JEROMY WILSON (T) KURT RANTA; CODY ACORD (T)		<b>DIVISION/GROUP SUPERVISOR</b>		BOB HINDS IAN MCCORD (T)
<b>SAFETY OFFICER</b>		TROY CORN; JACK CATES		<b>AIR OPERATIONS BRANCH DIRECTOR</b>		PAUL BALFOUR
<b>5. Resources Assigned this Period</b>						
Strike Team / Task Force / Resource Designator		LWD	Leader	Number Persons	Drop Off PT./Time	Pick Up PT./Time
<b>6. Control Operations/Work Assignments:</b>						
<p>TASK: Hold and secure slop-over west of H-10 and dozer line east from H-10. Continue mop-up and patrol Road 4550</p> <p>PURPOSE: Prevent fire growth that impacts private property, cultural and natural resources, and remaining timber stands within Summit Fire scar.</p> <p>END STATE: Fire is contained east of 45 Road and north of 4550 Road.</p>						
<b>7. Special Instructions:</b>						
Engines and tenders may NOT draft directly from natural water sources, such as creeks. Drafting will occur only from Fold-a-tanks.						
All resources check-in with DIVS when entering and leaving division.						
<b>8. Division/Group Communication Summary</b>						
Function	Channel	RX Frequency N/W	RX Tone/NAC	TX Frequency N/W	TX Tone/NAC	Mode
COMMAND	1	170.4250	131.8	168.0750	131.8	A
COMMAND	2	170.4125	131.8	165.9625	131.8	A
TACTICAL	4	168.0500	131.8	168.0500	131.8	A
AIR TO GROUND	13	167.0750		167.0750		A
<b>9. Prepared By (Resource Unit Leader)</b>			<b>Approved By (Planning Section Chief)</b>		<b>Date</b>	<b>Time</b>
JILL JOHNSON			MARGE HUTCHINSON		09/06/2022	2000

**Division/Group Assignment List (ICS 204 WF)**  
**Controlled Unclassified Information//Basic**

<b>1. Incident Name:</b>				<b>3.</b>		
CROCKETS KNOB				<b>Branch:</b>	<b>Division/Group</b>  E	
<b>2. Operational Period: DAY</b>						
Date/Time From: 09/07/2022 0600 WED		Date/Time To: 09/07/2022 1800 WED				
<b>4. Operations Personnel</b>						
<b>OPERATIONS CHIEF</b>		AARON ROWE; JEROMY WILSON (T) KURT RANTA; CODY ACORD (T)		<b>DIVISION/GROUP SUPERVISOR</b>		JON STONELAKE ANDREW STINCHFIELD (T)
<b>SAFETY OFFICER</b>		TROY CORN; JACK CATES		<b>AIR OPERATIONS BRANCH DIRECTOR</b>		PAUL BALFOUR
<b>5. Resources Assigned this Period</b>						
Strike Team / Task Force / Resource Designator	LWD	Leader	Number Persons	Drop Off PT./Time	Pick Up PT./Time	
O-61.80 SOF2	09/10	PAUL BRNA	1	BASE CAMP/0600	BASE CAMP/1800	
O-86 TFLD	09/12	NIC TURCO	1	BASE CAMP/0600	BASE CAMP/1800	
C-9 CRW2 IRON MOUNTAIN FF	09/10	VICTOR CISNEROS	20	BASE CAMP/0600	BASE CAMP/1800	
C-10 CRW2 CSR ENTERPR CRS3	09/10	JUBENCIO SALDANG	20	BASE CAMP/0600	BASE CAMP/1800	
E-38 ENG4 AAA THUNDERBOLT FIRE SVC	09/16	JAMES GRANT	3	BASE CAMP/0600	BASE CAMP/1800	
E-77 ENG6 OREGON WOODS	09/11	RAVEN PARKINS	3	BASE CAMP/0600	BASE CAMP/1800	
E-80 ENG6 A1 FIRESTORM E5	09/11	DONALD LAFFERTY	2	BASE CAMP/0600	BASE CAMP/1800	
E-144 ENG6 ENG 32 DARE ENTERPRISES	09/18	COOPER BERRY	3	BASE CAMP/0600	BASE CAMP/1800	
E-5 WTS2 45 CONTRACTING LLC	09/04	MIKE NAULT	1	BASE CAMP/0600	BASE CAMP/1800	
E-95 WTS2 VEGETATION SOLUTIONS	09/12	JOHN MCKENZIE	1	BASE CAMP/0600	BASE CAMP/1800	
E-113 WTS2 KING INC	09/15	DAVID SHEFFEL	1	BASE CAMP/0600	BASE CAMP/1800	
E-114 WTS2 SAULS MOBILE WASH	09/13	WAYNE SAUL	1	BASE CAMP/0600	BASE CAMP/1800	
E-17 DZR2 J & D LOGGING & CONTR **	09/05	JOHN SANOWSKI	2	BASE CAMP/0600	BASE CAMP/1800	
E-119 UTV E OREGON RENTALS		UNSTAFFED		BASE CAMP/0600	BASE CAMP/1800	
O-143 FOBS	09/15	JAKE QUINTANA	1	BASE CAMP/0600	BASE CAMP/1800	
<b>8. Division/Group Communication Summary</b>						
Function	Channel	RX Frequency N/W	RX Tone/NAC	TX Frequency N/W	TX Tone/NAC	Mode
COMMAND	1	170.4250	131.8	168.0750	131.8	A
COMMAND	2	170.4125	131.8	165.9625	131.8	A
TACTICAL	5	168.2000	131.8	168.2000	131.8	A
AIR TO GROUND	13	167.0750		167.0750		A
<b>9. Prepared By (Resource Unit Leader)</b>			<b>Approved By (Planning Section Chief)</b>		<b>Date</b>	<b>Time</b>
MARGE HUTCHINSON			JILL JOHNSON		09/06/2022	2000

**Division/Group Assignment List (ICS 204 WF)**  
**Controlled Unclassified Information//Basic**

<b>1. Incident Name:</b>			<b>3.</b>			
CROCKETS KNOB			<b>Branch:</b>		<b>Division/Group</b>	
<b>2. Operational Period:</b> DAY			E			
Date/Time From: 09/07/2022 0600 WED		Date/Time To: 09/07/2022 1800 WED				
<b>4. Operations Personnel</b>						
<b>OPERATIONS CHIEF</b>		AARON ROWE; JEROMY WILSON (T) KURT RANTA; CODY ACORD (T)		<b>DIVISION/GROUP SUPERVISOR</b>		JON STONELAKE ANDREW STINCHFIELD (T)
<b>SAFETY OFFICER</b>		TROY CORN; JACK CATES		<b>AIR OPERATIONS BRANCH DIRECTOR</b>		PAUL BALFOUR
<b>5. Resources Assigned this Period</b>						
Strike Team / Task Force / Resource Designator		LWD	Leader	Number Persons	Drop Off PT./Time	Pick Up PT./Time
O-144 FOBS		09/15	DAVID REYNOLDS	1	BASE CAMP/0600	BASE CAMP/1800
O-145 FOBS (T)		09/15	BRADLEY WALKER	1	BASE CAMP/0600	BASE CAMP/1800
O-122 REAF		09/13	SUSAN THEIS	1	BASE CAMP/0600	BASE CAMP/1800
O-175 REAF		09/20	JASON WRIGHT	1	BASE CAMP/0600	BASE CAMP/1800
O-179 REAF		09/20	DANIELLE MCCAULEY	1	BASE CAMP/0600	BASE CAMP/1800
O-181 REAF		09/20	ERIC MERTEN	1	BASE CAMP/0600	BASE CAMP/1800
O-7 EMT		09/13	DANIEL SOLOMON	1	BASE CAMP/0600	BASE CAMP/1800
O-93 EMPF MEDIC 2 FRONT LINE EMS		09/10	ASHLEY CARTER	1	BASE CAMP/0600	BASE CAMP/1800
O-94 EMPF MEDIC 1 ADVENTURE MEDICS		09/10	CHRISTIAN MILLER	1	BASE CAMP/0600	BASE CAMP/1800
E-87 REMS BLACKWOODS EMERG SVC		09/13	NICK BRUCKNER	4	BASE CAMP/0600	BASE CAMP/1800
<b>6. Control Operations/Work Assignments:</b>						
TASK: Hold and secure spots west of Road 45. Grid and mop-up along Road 45. PURPOSE: Prevent fire growth that impacts cultural and natural resources, remaining timber stands within the Summit Fire scar, and the Indian Rock Lookout END STATE: Fire is contained east of Road 45.						
<b>7. Special Instructions:</b>						
Engines and tenders may NOT draft directly from natural water sources, such as creeks. Drafting will occur only from Fold-a-tanks.						
All resources check-in with DIVS when entering and leaving division.						
<b>8. Division/Group Communication Summary</b>						
Function	Channel	RX Frequency N/W	RX Tone/NAC	TX Frequency N/W	TX Tone/NAC	Mode
COMMAND	1	170.4250	131.8	168.0750	131.8	A
COMMAND	2	170.4125	131.8	165.9625	131.8	A
TACTICAL	5	168.2000	131.8	168.2000	131.8	A
AIR TO GROUND	13	167.0750		167.0750		A
<b>9. Prepared By (Resource Unit Leader)</b>			<b>Approved By (Planning Section Chief)</b>		<b>Date</b>	<b>Time</b>
MARGE HUTCHINSON			JILL JOHNSON		09/06/2022	2000

**Division/Group Assignment List (ICS 204 WF)**  
**Controlled Unclassified Information//Basic**

<b>1. Incident Name:</b>				<b>3.</b>		
CROCKETS KNOB				<b>Branch:</b>	<b>Division/Group</b>  <b>G</b>	
<b>2. Operational Period: DAY</b>						
Date/Time From: 09/07/2022 0600 WED		Date/Time To: 09/07/2022 1800 WED				
<b>4. Operations Personnel</b>						
<b>OPERATIONS CHIEF</b>		AARON ROWE; JEROMY WILSON (T) KURT RANTA; CODY ACORD (T)		<b>DIVISION/GROUP SUPERVISOR</b>		DJ GOLDSMITH
<b>SAFETY OFFICER</b>		TROY CORN; JACK CATES ERIC MILLER (T)		<b>AIR OPERATIONS BRANCH DIRECTOR</b>		PAUL BALFOUR
<b>5. Resources Assigned this Period</b>						
Strike Team / Task Force / Resource Designator		LWD	Leader	Number Persons	Drop Off PT./Time	Pick Up PT./Time
O-61.80 SOF2		09/10	PAUL BRNA	1	BASE CAMP/0600	BASE CAMP/1800
O-84 TFLD		09/11	SCOTT BENINATI	1	BASE CAMP/0600	BASE CAMP/1800
O-54 HEQB		09/12	JAMES MAYOR	1	BASE CAMP/0600	BASE CAMP/1800
O-80 HEQB (T)		09/09	WHITNEY VANDEWIELE	1	BASE CAMP/0600	BASE CAMP/1800
O-156 HEQB		09/14	JAMES GOELLER	1	BASE CAMP/0600	BASE CAMP/1800
O-157 HEQB		09/15	MATTHEW JONES	1	BASE CAMP/0600	BASE CAMP/1800
O-158 HEQB(T)		09/14	TYLER TOMLINSON	1	BASE CAMP/0600	BASE CAMP/1800
O-128 FMOD SWEDBERG CONTRACTING		09/12	TIMOTHY WAGNER	2	BASE CAMP/0600	BASE CAMP/1800
O-176 FMOD GLEN DOBSON		09/18		2	BASE CAMP/0600	BASE CAMP/1800
E-81 ENG6 TIMBER BASIN		09/12	SCOTT FARMER	3	BASE CAMP/0600	BASE CAMP/1800
E-45 WTS2 LEONARD OSBURN		09/18	ALAN EWING	1	BASE CAMP/0600	BASE CAMP/1800
E-6 WTT2 STORM CARPENTER		09/18	CUB CARPENTER	2	BASE CAMP/0600	BASE CAMP/1800
E-98 DZR2 PATTON CARTER D2		09/13	PATTON CAARTER	2	BASE CAMP/0600	BASE CAMP/1800
E-99 SMM3 JLC CONTRACTING 333G		09/13	BRYAN STAHANCYK	2	BASE CAMP/0600	BASE CAMP/1800
E-32 MBM2 BRUCE YOUNG LOGGING		09/07	CALEB JOHNSON	2	BASE CAMP/0600	BASE CAMP/1800
<b>8. Division/Group Communication Summary</b>						
Function	Channel	RX Frequency N/W	RX Tone/NAC	TX Frequency N/W	TX Tone/NAC	Mode
COMMAND	1	170.4250	131.8	168.0750	131.8	A
COMMAND	2	170.4125	131.8	165.9625	131.8	A
COMMAND	3	171.5375	131.8	166.3625	131.8	A
TACTICAL	7	166.7250	131.8	166.7250	131.8	A
AIR TO GROUND	13	167.0750		167.0750		A
<b>9. Prepared By (Resource Unit Leader)</b>			<b>Approved By (Planning Section Chief)</b>		<b>Date</b>	<b>Time</b>
MARGE HUTCHINSON			JILL JOHNSON		09/06/2022	2000

## Division/Group Assignment List (ICS 204 WF)

Controlled Unclassified Information//Basic

<b>1. Incident Name:</b>				<b>3.</b>			
CROCKETS KNOB				<b>Branch:</b>		<b>Division/Group</b>	
<b>2. Operational Period: DAY</b>							
Date/Time From: 09/07/2022 0600		Date/Time To: 09/07/2022 1800		<b>G</b>			
WED		WED					
<b>4. Operations Personnel</b>							
<b>OPERATIONS CHIEF</b>		AARON ROWE; JEROMY WILSON (T) KURT RANTA; CODY ACORD (T)		<b>DIVISION/GROUP SUPERVISOR</b>		DJ GOLDSMITH	
<b>SAFETY OFFICER</b>		TROY CORN; JACK CATES ERIC MILLER (T)		<b>AIR OPERATIONS BRANCH DIRECTOR</b>		PAUL BALFOUR	
<b>5. Resources Assigned this Period</b>							
Strike Team / Task Force / Resource Designator		LWD	Leader	Number Persons	Drop Off PT./Time	Pick Up PT./Time	
E-115 MBM1 BOULDER RIDGE CONSTRUCTION		09/14	GARRY ALLEN	2	BASE CAMP/0600	BASE CAMP/1800	
E-62 FEL1 J & D LOGGING & CONTR		09/16	COLBY BRADFORD	2	BASE CAMP/0600	BASE CAMP/1800	
E-11 VUTV KD OUTDOORS		09/06			BASE CAMP/0600	BASE CAMP/1800	
<b>6. Control Operations/Work Assignments:</b>							
<p>TASK: Continue road prep along the Road 45 to the Sharpe Ridge Trailhead. Evaluate values at risk north and east of fire in the Umatilla NF to determine what point protection needs are.</p> <p>PURPOSE: Prevent fire growth that impacts cultural and natural resource values and recreation sites. Point protect values at risk north and east of fire.</p> <p>END STATE: Fire is contained east of Road 45 and west of Road 10.</p>							
<b>7. Special Instructions:</b>							
All resources check-in with DIVS when entering and leaving division.							
<b>8. Division/Group Communication Summary</b>							
Function	Channel	RX Frequency N/W	RX Tone/NAC	TX Frequency N/W	TX Tone/NAC	Mode	
COMMAND	1	170.4250	131.8	168.0750	131.8	A	
COMMAND	2	170.4125	131.8	165.9625	131.8	A	
COMMAND	3	171.5375	131.8	166.3625	131.8	A	
TACTICAL	7	166.7250	131.8	166.7250	131.8	A	
AIR TO GROUND	13	167.0750		167.0750		A	
<b>9. Prepared By (Resource Unit Leader)</b>			<b>Approved By (Planning Section Chief)</b>			<b>Date</b>	<b>Time</b>
MARGE HUTCHINSON			JILL JOHNSON			09/06/2022	2000

**Division/Group Assignment List (ICS 204 WF)**  
**Controlled Unclassified Information//Basic**

<b>1. Incident Name:</b>			<b>3.</b>			
CROCKETS KNOB			<b>Branch:</b>		<b>Division/Group</b>	
<b>2. Operational Period: DAY</b>			<b>M</b>			
Date/Time From: 09/07/2022 0600 WED		Date/Time To: 09/07/2022 1800 WED				
<b>4. Operations Personnel</b>						
<b>OPERATIONS CHIEF</b>		AARON ROWE; JEROMY WILSON (T) KURT RANTA; CODY ACORD (T)		<b>DIVISION/GROUP SUPERVISOR</b>		BRAD BRYANT
<b>SAFETY OFFICER</b>		TROY CORN; JACK CATES ERIC MILLER (T)		<b>AIR OPERATIONS BRANCH DIRECTOR</b>		PAUL BALFOUR
<b>5. Resources Assigned this Period</b>						
Strike Team / Task Force / Resource Designator	LWD	Leader	Number Persons	Drop Off PT./Time	Pick Up PT./Time	
O-99 SOFR	09/19	JEROME DRAZINSKI	1	BASE CAMP/0600	BASE CAMP/1800	
O-155 HEQB	09/15	TIM SCOTT	1	BASE CAMP/0600	BASE CAMP/1800	
C-7 CRW1 EL CARISO IHC	09/09	CHARLES KOTT	22	BASE CAMP/0600	BASE CAMP/1800	
C-8 CRW1 INYO IHC	09/08	JOEL SCHILLING	21	BASE CAMP/0600	BASE CAMP/1800	
C-16 CRW1 PIKE IHC	09/10	DAVID SMALLMAN	22	GRAVEL PIT SPIKE/0600	GRAVEL PIT SPIKE/1800	
C-4 CR2I GRAYBACK FORESTRY 13A	09/15	CHARLES COFMAN	20	BASE CAMP/0600	BASE CAMP/1800	
C-18 CR2I VALE BLM SRV #12	09/07	JAY JACOBO	20	BASE CAMP/0600	BASE CAMP/1800	
C-27 CR2I WARM SPRINGS IHC #2 **	09/18	RACIN JOHNSON	19	BASE CAMP/0600	BASE CAMP/1800	
C-28 CR2I GRAYBACK FORESTRY NCC 17B	09/18	GAVIN SAEMAN	20	GRAVEL PIT SPIKE/0600	GRAVEL PIT SPIKE/1800	
C-25 CRW2 SZ FORESTRY FULLERTON CREW 1	09/15	RICHARD FULLERTON	20	BASE CAMP/0600	BASE CAMP/1800	
E-79 ENG6 HI COUNTRY LLC	09/11	JOHN CONGER	3	BASE CAMP/0600	BASE CAMP/1800	
E-92 WTT2 JWS WILDFIRE	09/13	JOHN MCNEELY	1	BASE CAMP/0600	BASE CAMP/1800	
E-94 WTT2 GRAYBACK FORESTRY	09/12	CLIFFORD TEVEBAUGH	1	BASE CAMP/0600	BASE CAMP/1800	
E-14 UTV		UNSTAFFED		BASE CAMP/0600	BASE CAMP/1800	
<b>8. Division/Group Communication Summary</b>						
Function	Channel	RX Frequency N/W	RX Tone/NAC	TX Frequency N/W	TX Tone/NAC	Mode
COMMAND	1	170.4250	131.8	168.0750	131.8	A
COMMAND	2	170.4125	131.8	165.9625	131.8	A
COMMAND	3	171.5375	131.8	166.3625	131.8	A
TACTICAL	6	168.6000	131.8	168.6000	131.8	A
AIR TO GROUND	13	167.0750		167.0750		A
<b>9. Prepared By (Resource Unit Leader)</b>		<b>Approved By (Planning Section Chief)</b>			<b>Date</b>	<b>Time</b>
MARGE HUTCHINSON		JILL JOHNSON			09/06/2022	2000



**Division/Group Assignment List (ICS 204 WF)**  
**Controlled Unclassified Information//Basic**

<b>1. Incident Name:</b>			<b>3.</b>			
CROCKETS KNOB			<b>Branch:</b>		<b>Division/Group</b>	
<b>2. Operational Period: DAY</b>			<b>M</b>			
Date/Time From: 09/07/2022 0600      WED		Date/Time To: 09/07/2022 1800      WED				
<b>4. Operations Personnel</b>						
<b>OPERATIONS CHIEF</b>		AARON ROWE; JEROMY WILSON (T) KURT RANTA; CODY ACORD (T)		<b>DIVISION/GROUP SUPERVISOR</b>		BRAD BRYANT
<b>SAFETY OFFICER</b>		TROY CORN; JACK CATES ERIC MILLER (T)		<b>AIR OPERATIONS BRANCH DIRECTOR</b>		PAUL BALFOUR
<b>5. Resources Assigned this Period</b>						
Strike Team / Task Force / Resource Designator		LWD	Leader	Number Persons	Drop Off PT./Time	Pick Up PT./Time
<b>6. Control Operations/Work Assignments:</b>						
<p>TASK: Continue securing fire edge east and south of Indian Rock Lookout.          PURPOSE: Prevent long duration fire growth that impacts cultural and natural resource values, recreation sites, private property and Indian Rock Lookout.          END STATE: Fire is contained north and west of Vinegar Hill Scenic area boundary and 020 Road.</p>						
<b>7. Special Instructions:</b>						
<p>Notify Operations of fire growth across the Princess Trail.</p> <p>All resources check-in with DIVS when entering and leaving division.</p>						
<b>8. Division/Group Communication Summary</b>						
Function	Channel	RX Frequency N/W	RX Tone/NAC	TX Frequency N/W	TX Tone/NAC	Mode
COMMAND	1	170.4250	131.8	168.0750	131.8	A
COMMAND	2	170.4125	131.8	165.9625	131.8	A
COMMAND	3	171.5375	131.8	166.3625	131.8	A
TACTICAL	6	168.6000	131.8	168.6000	131.8	A
AIR TO GROUND	13	167.0750		167.0750		A
<b>9. Prepared By (Resource Unit Leader)</b>			<b>Approved By (Planning Section Chief)</b>		<b>Date</b>	<b>Time</b>
MARGE HUTCHINSON			JILL JOHNSON		09/06/2022	2000

**Division/Group Assignment List (ICS 204 WF)**  
**Controlled Unclassified Information//Basic**

<b>1. Incident Name:</b>			<b>3.</b>			
CROCKETS KNOB			<b>Branch:</b>		<b>Division/Group</b>	
<b>2. Operational Period:</b> DAY			<b>S / Z</b>			
Date/Time From: 09/07/2022 0600 WED		Date/Time To: 09/07/2022 1800 WED				
<b>4. Operations Personnel</b>						
<b>OPERATIONS CHIEF</b>		AARON ROWE; JEROMY WILSON (T) KURT RANTA; CODY ACORD (T)		<b>DIVISION/GROUP SUPERVISOR</b>		LARRY LEACH
<b>SAFETY OFFICER</b>		TROY CORN; JACK CATES ERIC MILLER (T)		<b>AIR OPERATIONS BRANCH DIRECTOR</b>		PAUL BALFOUR
<b>5. Resources Assigned this Period</b>						
Strike Team / Task Force / Resource Designator		LWD	Leader	Number Persons	Drop Off PT./Time	Pick Up PT./Time
O-98 SOFR		09/12	CHRIS O'BRIEN	1	BASE CAMP/0600	BASE CAMP/1800
C-6 CR2I OR-MAF #401 **		09/07	GARY WHATLEY	25	BASE CAMP/0600	BASE CAMP/1800
LAKEVIEW HELITAK			SAUL BELLAINE	6	SPIKE H-139/0600	SPIKE H-139/1800
E-46 WTS2 OVERPECK LOGGING		09/13	JOE MCCORMICK	1	BASE CAMP/0600	BASE CAMP/1800
O-9 REMS SPFN 9		09/13	MATTHEW TURNER	4	BASE CAMP/0600	BASE CAMP/1800
E-51 AMBU 2		09/12	JERRY SINICA	2	BASE CAMP/0600	BASE CAMP/1800
<b>6. Control Operations/Work Assignments:</b>						
TASK: Secure and patrol dozer line, Road 436 and Big Boulder Trail. Monitor uncontained fire edge in head of Boulder Creek with Helitack and backhaul excess equipment.						
PURPOSE: Prevent additional fire spread into Badger Creek that may have future impact to private property, cultural, natural and timber values.						
END STATE: Fire is contained east of Road 4550 and north of Badger Creek.						
<b>7. Special Instructions:</b>						
Engines and tenders may NOT draft directly from natural water sources, such as creeks. Drafting will occur only from Fold-a-tanks.						
<b>8. Division/Group Communication Summary</b>						
Function	Channel	RX Frequency N/W	RX Tone/NAC	TX Frequency N/W	TX Tone/NAC	Mode
COMMAND	1	170.4250	131.8	168.0750	131.8	A
COMMAND	2	170.4125	131.8	165.9625	131.8	A
TACTICAL	8	166.7750	131.8	166.7750	131.8	A
AIR TO GROUND	13	167.0750		167.0750		A
<b>9. Prepared By (Resource Unit Leader)</b>			<b>Approved By (Planning Section Chief)</b>		<b>Date</b>	<b>Time</b>
MARGE HUTCHINSON			JILL JOHNSON		09/06/2022	2000

## Division/Group Assignment List (ICS 204 WF)

Controlled Unclassified Information//Basic

<b>1. Incident Name:</b>				<b>3.</b>			
CROCKETS KNOB				<b>Branch:</b>		<b>Division/Group</b>	
<b>2. Operational Period: DAY</b>							
Date/Time From: 09/07/2022 0600		Date/Time To: 09/07/2022 1800		<b>S / Z</b>			
WED		WED					
<b>4. Operations Personnel</b>							
<b>OPERATIONS CHIEF</b>		AARON ROWE; JEROMY WILSON (T) KURT RANTA; CODY ACORD (T)		<b>DIVISION/GROUP SUPERVISOR</b>		LARRY LEACH	
<b>SAFETY OFFICER</b>		TROY CORN; JACK CATES ERIC MILLER (T)		<b>AIR OPERATIONS BRANCH DIRECTOR</b>		PAUL BALFOUR	
<b>7. Special Instructions:</b>							
<p>** Resource will support IA as directed:</p> <ul style="list-style-type: none"> <li>· If Initial Attack occurs within the TFR, John Day Dispatch will coordinate with appropriate duty officer and contact Field Ops for response.</li> <li>· Field Operations will contact IA Group Supervisor and or Air Operations to coordinate response to new start.</li> <li>· Local forest Initial Attack frequencies will be used and provided in the IAP Communications Plan</li> <li>· The same process will be used for fires outside of TFR if assistance from Crockets Knob fire resources is requested.</li> </ul> <p>All resources check-in with DIVS when entering and leaving division.</p>							
<b>8. Division/Group Communication Summary</b>							
Function	Channel	RX Frequency N/W	RX Tone/NAC	TX Frequency N/W	TX Tone/NAC	Mode	
COMMAND	1	170.4250	131.8	168.0750	131.8	A	
COMMAND	2	170.4125	131.8	165.9625	131.8	A	
TACTICAL	8	166.7750	131.8	166.7750	131.8	A	
AIR TO GROUND	13	167.0750		167.0750		A	
<b>9. Prepared By (Resource Unit Leader)</b>			<b>Approved By (Planning Section Chief)</b>			<b>Date</b>	<b>Time</b>
MARGE HUTCHINSON			JILL JOHNSON			09/06/2022	2000

## Division/Group Assignment List (ICS 204 WF)

Controlled Unclassified Information//Basic

<b>1. Incident Name:</b>			<b>3.</b>			
CROCKETS KNOB			<b>Branch:</b>		<b>Division/Group</b>	
<b>2. Operational Period:</b> <b>DAY</b>						
Date/Time From: 09/07/2022 0600                      WED		Date/Time To: 09/07/2022 1800                      WED		<b>CONTINGENCY</b>		
<b>4. Operations Personnel</b>						
<b>OPERATIONS CHIEF</b>		AARON ROWE; JEROMY WILSON (T) KURT RANTA; CODY ACORD (T)		<b>DIVISION/GROUP SUPERVISOR</b>		EZRA BUTTERFIELD
<b>SAFETY OFFICER</b>		TROY CORN; JACK CATES		<b>AIR OPERATIONS BRANCH DIRECTOR</b>		PAUL BALFOUR
<b>5. Resources Assigned this Period</b>						
Strike Team / Task Force / Resource Designator		LWD	Leader	Number Persons	Drop Off PT./Time	Pick Up PT./Time
O-11 TFLD		09/09	JOSHUAH WINKLER	1	BASE CAMP/0600	BASE CAMP/1800
O-130 TFLD (T)		09/11	TIMOTHY WAGNER	1	BASE CAMP/0600	BASE CAMP/1800
O-177 FMOD SWEDBERG CONTRACTING		09/19	LOGAN WADLEY	2	BASE CAMP/0600	BASE CAMP/1800
C-19 CRW2 WILLAMETTE VLY REFOREST CR 3		09/12	LAZARO MONTANO	20	BASE CAMP/0600	BASE CAMP/1800
C-20 CRW2 TORRES CONTR CR6		09/11	MARCA MARTINEZ	20	BASE CAMP/0600	BASE CAMP/1800
E-78 ENG6 AQUAFORCE E204		09/11	TYLER GILMORE	3	BASE CAMP/0600	BASE CAMP/1800
E-7 DZR2 COUGAR RIDGE CONSTR D2		09/05	DAVE OAKS	2	BASE CAMP/0600	BASE CAMP/1800
E-34 MBM1 EAGLE CAP FORESTRY		09/10	BEN FISCHER	2	BASE CAMP/0600	BASE CAMP/1800
E-10 CHP2 HINER JR, THEODORE W		09/08	AUSTIN HUTTEMA	3	BASE CAMP/0600	BASE CAMP/1800
E-30 CHP2 GRAYBACK FORESTRY		09/08	JOSH MINER	3	BASE CAMP/0600	BASE CAMP/1800
E-96 CHP1 THE ROAD HOME		09/12	SAM BONADOR	3	BASE CAMP/0600	BASE CAMP/1800
E-97 CHP1 WYEAST FORESTRY MGMT		09/12	ERIC NELSON	3	BASE CAMP/0600	BASE CAMP/1800
O-95 EMPF MEDIC 3 ADVENTURE MEDICS		09/12	MICHAEL COOPER	1	BASE CAMP/0600	BASE CAMP/1800
<b>8. Division/Group Communication Summary</b>						
Function	Channel	RX Frequency N/W	RX Tone/NAC	TX Frequency N/W	TX Tone/NAC	Mode
COMMAND	1	170.4250	131.8	168.0750	131.8	A
COMMAND	2	170.4125	131.8	165.9625	131.8	A
TACTICAL	7	166.7250	131.8	166.7250	131.8	A
AIR TO GROUND	13	167.0750		167.0750		A
<b>9. Prepared By (Resource Unit Leader)</b>			<b>Approved By (Planning Section Chief)</b>		<b>Date</b>	<b>Time</b>
MARGE HUTCHINSON			JILL JOHNSON		09/06/2022	2000

**Division/Group Assignment List (ICS 204 WF)**  
**Controlled Unclassified Information//Basic**

<b>1. Incident Name:</b>			<b>3.</b>			
CROCKETS KNOB			<b>Branch:</b>		<b>Division/Group</b>	
<b>2. Operational Period:</b> DAY			<b>CONTINGENCY</b>			
Date/Time From: 09/07/2022 0600 WED		Date/Time To: 09/07/2022 1800 WED				
<b>4. Operations Personnel</b>						
<b>OPERATIONS CHIEF</b>		AARON ROWE; JEROMY WILSON (T) KURT RANTA; CODY ACORD (T)		<b>DIVISION/GROUP SUPERVISOR</b>		EZRA BUTTERFIELD
<b>SAFETY OFFICER</b>		TROY CORN; JACK CATES		<b>AIR OPERATIONS BRANCH DIRECTOR</b>		PAUL BALFOUR
<b>5. Resources Assigned this Period</b>						
Strike Team / Task Force / Resource Designator		LWD	Leader	Number Persons	Drop Off PT./Time	Pick Up PT./Time
<b>6. Control Operations/Work Assignments:</b>						
<p>TASK: Prep 4560 road system as a contingency line west of main fire.  PURPOSE: To establish secondary lines of defense that would prevent impact to values if current primary lines are compromised.  END STATE: Contingency lines identified and established if needed outside of primary containment lines.</p>						
<b>7. Special Instructions:</b>						
<p>Engines and tenders may NOT draft directly from natural water sources, such as creeks. Drafting will occur only from fold-a-tanks.</p> <p>** Resource will be used for IA as directed:</p> <ul style="list-style-type: none"> <li>· If Initial Attack occurs within the TFR, John Day Dispatch will coordinate with appropriate duty officer and contact Field Ops for response.</li> <li>· Field Operations will contact IA Group Supervisor and or Air Operations to coordinate response to new start.</li> <li>· Local forest Initial Attack frequencies will be used and provided in the IAP Communications Plan</li> <li>· The same process will be used for fires outside of TFR if assistance from Crockets Knob fire resources is requested.</li> </ul>						
<b>8. Division/Group Communication Summary</b>						
Function	Channel	RX Frequency N/W	RX Tone/NAC	TX Frequency N/W	TX Tone/NAC	Mode
COMMAND	1	170.4250	131.8	168.0750	131.8	A
COMMAND	2	170.4125	131.8	165.9625	131.8	A
TACTICAL	7	166.7250	131.8	166.7250	131.8	A
AIR TO GROUND	13	167.0750		167.0750		A
<b>9. Prepared By (Resource Unit Leader)</b>			<b>Approved By (Planning Section Chief)</b>		<b>Date</b>	<b>Time</b>
MARGE HUTCHINSON			JILL JOHNSON		09/06/2022	2000

**Division/Group Assignment List (ICS 204 WF)**  
**Controlled Unclassified Information//Basic**

<b>1. Incident Name:</b>			<b>3.</b>			
CROCKETS KNOB			<b>Branch:</b>		<b>Division/Group</b>	
<b>2. Operational Period:</b> DAY			<b>STRUCTURE / IA</b>			
Date/Time From: 09/07/2022 0600 WED		Date/Time To: 09/07/2022 1800 WED				
<b>4. Operations Personnel</b>						
<b>OPERATIONS CHIEF</b>		AARON ROWE; JEROMY WILSON (T) KURT RANTA; CODY ACORD (T)		<b>DIVISION/GROUP SUPERVISOR</b>		JIM WALKOWSKI
<b>SAFETY OFFICER</b>		TROY CORN; JACK CATES ERIC MILLER (T)		<b>AIR OPERATIONS BRANCH DIRECTOR</b>		PAUL BALFOUR
<b>5. Resources Assigned this Period</b>						
Strike Team / Task Force / Resource Designator		LWD	Leader	Number Persons	Drop Off PT./Time	Pick Up PT./Time
ALASKA STRIKE TEAM					BASE CAMP /0600	BASE CAMP/1800
O-119 TFLD		09/07	BRITTANY STILLIE	1	BASE CAMP /0600	BASE CAMP/1800
E-86.1 TFLD (T)		09/07	ROBIN ACE	1	BASE CAMP /0600	BASE CAMP/1800
E-82 ENG6 AK-KKS K-62		09/07	DAN WHITE	3	BASE CAMP /0600	BASE CAMP/1800
E-83 ENG6 FAIRBANKS-65		09/07	MATT NUNNELLY	3	BASE CAMP /0600	BASE CAMP/1800
E-84 ENG6 FAIRBANKS-66		09/07	ROBERT WALLACE	3	BASE CAMP /0600	BASE CAMP/1800
E-85 ENG6 FAIRBANKS-67		09/07	LAURA LUND	3	BASE CAMP /0600	BASE CAMP/1800
E-86 ENG6 DOF M-68		09/07	JOE SHAW	3	BASE CAMP /0600	BASE CAMP/1800
E-2 ENG4 GRAYBACK FORESTRY		09/18	JOHN RAY	3	BASE CAMP /0600	BASE CAMP/1800
E-35 ENG6 STRIKE BACK		09/08	JOE PICKET	2	BASE CAMP /0600	BASE CAMP/1800
E-37 ENG4 AAA THUNDERBOLT FIRE SVC		09/08	ROBERT STEWART	3	BASE CAMP /0600	BASE CAMP/1800
E-112 ENG ODF E-9262		09/13	AARON KIDWELL	2	BASE CAMP /0600	BASE CAMP/1800
E-137 ENG5 BLACKSTONE FORESTRY		09/19	CODY SUTTON	3	BASE CAMP /0600	BASE CAMP/1800
E-91 WTT2 TRI-CO INC TENDER		09/13	DALE HUGHES	1	BASE CAMP /0600	BASE CAMP/1800
E-13 VUTV KD OUTDOORS		09/06			BASE CAMP /0600	BASE CAMP/1800
<b>6. Control Operations/Work Assignments:</b>						
<b>8. Division/Group Communication Summary</b>						
Function	Channel	RX Frequency N/W	RX Tone/NAC	TX Frequency N/W	TX Tone/NAC	Mode
COMMAND	1	170.4250	131.8	168.0750	131.8	A
COMMAND	2	170.4125	131.8	165.9625	131.8	A
TACTICAL	9	168.2500	131.8	168.2500	131.8	A
TACTICAL	11	168.3125	131.8	168.3125	131.8	A
AIR TO GROUND	12	167.3750		167.3750		A
AIR TO GROUND	13	167.0750		167.0750		A
<b>9. Prepared By (Resource Unit Leader)</b>			<b>Approved By (Planning Section Chief)</b>		<b>Date</b>	<b>Time</b>
MARGE HUTCHINSON			JILL JOHNSON		09/06/2022	2000

**Division/Group Assignment List (ICS 204 WF)**  
**Controlled Unclassified Information//Basic**

<b>1. Incident Name:</b>		<b>3.</b>	
CROCKETS KNOB		<b>Branch:</b>	<b>Division/Group</b>
<b>2. Operational Period: DAY</b>			
Date/Time From: 09/07/2022 0600	WED	Date/Time To: 09/07/2022 1800	WED
<b>STRUCTURE / IA</b>			

<b>4. Operations Personnel</b>			
<b>OPERATIONS CHIEF</b>	AARON ROWE; JEROMY WILSON (T) KURT RANTA; CODY ACORD (T)	<b>DIVISION/GROUP SUPERVISOR</b>	JIM WALKOWSKI
<b>SAFETY OFFICER</b>	TROY CORN; JACK CATES ERIC MILLER (T)	<b>AIR OPERATIONS BRANCH DIRECTOR</b>	PAUL BALFOUR

**6. Control Operations/Work Assignments:**

Structure Group:  
 TASK: Continue to assess structures and infrastructure that could be impacted by fire spread and develop structure defense plan. Identify structure needs and coordinate with OSFM liaison and ODF to determine structure defense resources available. Develop point protection plan for Desolation creek area, Olive Lake and Duprat Cabins.  
 PURPOSE: To prepare structures and private property values along the Highway 20 and Road 10 corridors and in the vicinity of the fire for impact from fire.  
 END STATE: Structures and private property along the Highway 20 and Road 10 corridors and in the vicinity of the fire are assessed and defensible. Suppression activities to prevent fire impact to private property has occurred.

IA Group:  
 TASK: Follow IA response plan to provide IA response with identified resources for new fire starts within TFR.  
 PURPOSE: To support initial attack response capability for the Malheur and Umatilla NFs.  
 END STATE: Prompt and efficient mobilization of identified IA resources to new fire starts.

**7. Special Instructions:**

- If Initial Attack occurs within the TFR, John Day Dispatch will coordinate with appropriate duty officer and contact Field Ops for response.
- Field Operations will contact IA Group Supervisor and or Air Operations to coordinate response to new start.
- Local forest Initial Attack frequencies will be used and provided in the IAP Communications Plan
- The same process will be used for fires outside of TFR if assistance from Crockets Knob fire resources is requested.

Engines and tenders may NOT draft directly from natural water sources, such as creeks. Drafting will occur only from Fold-a-tanks.

<b>8. Division/Group Communication Summary</b>						
Function	Channel	RX Frequency N/W	RX Tone/NAC	TX Frequency N/W	TX Tone/NAC	Mode
COMMAND	1	170.4250	131.8	168.0750	131.8	A
COMMAND	2	170.4125	131.8	165.9625	131.8	A
TACTICAL	9	168.2500	131.8	168.2500	131.8	A
TACTICAL	11	168.3125	131.8	168.3125	131.8	A
AIR TO GROUND	12	167.3750		167.3750		A
AIR TO GROUND	13	167.0750		167.0750		A

<b>9. Prepared By (Resource Unit Leader)</b>		<b>Approved By (Planning Section Chief)</b>		<b>Date</b>	<b>Time</b>
MARGE HUTCHINSON		JILL JOHNSON		09/06/2022	2000

**AIR OPERATIONS SUMMARY**

**PREPARED BY: Paul Balfour**

**PREPARED DATE/TIME: September 6, 1800hrs**

<b>INCIDENT NAME</b> Crockets Knob	<b>2. OPERATIONAL PERIOD:</b> Date: 9/7/2022      Helibase Start Time: 0800 End Time: 2000      Sunrise: 0624 Sunset: 2000 CTL (Times valid for John Day PDT)
---------------------------------------	---

<p><b>3. REMARKS (Safety Notes, Hazards, Air Operations Special Equipment, etc.):</b> General Aviation, See &amp; Avoid YOU will be working in a complex fire environment, ensure YOU understand the Fire Traffic Area (FTA) Protocols. (12nm initial call, 7nm contact must be made prior to entering FTA)</p> <p>Bucket work, Retardant drops: ensure area is clear of ground personnel before dropping; watch for wires; be aware of potential for turbulence at ridge tops, saddles, canyons, etc *** BE AWARE OF FATIGUE, TAKE LONGER BREAKS WHEN FLYING IN SMOKEY CONDITIONS. *** Report all TFR intrusions to Air Operations, Air Support or Helibase as soon as possible.</p>	<p><b>4. MEDEVAC A/C:</b> Order thru ATGS or JDIDC <b>EMS Rotor A/G:</b> <b>VMED29 155.3475 Tx/Rx,</b> <b>Tone 156.7 Tx/Rx</b> 38HX COMM: A/A Primary A/G Primary</p>	<p><b>5. TFR #2/8108 &amp; 2/8109</b> Surface to 11,000' MSL 7NM Radius</p>
---	---	---

6. PERSONNEL		LWD	Phone	7. FREQUENCIES			AM	FM	8. FIXED-WING	# Avail / Type/ Make-Model / FAA N# / Base(s)
AOBD: Paul Balfour O-61.43			509-993-8739	AIR/AIR Primary			123.6250 (A8)		Fixed Wing/Buckets	DIVS order thru ATGS if up, or Communications
ASGS: Tim Lyda O- 61.44      9/8			541-761-2676	AIR/AIR Secondary			128.2250 (A39)			
HEBM: Tyler Davis (T) 9/7			360-220-5359	AIR/GRD Primary				167.0750 (A11)	ATGS Aircraft	(A-2) N3NT AC690D Jeremy Cowie or Relief Rob Rosetti  LATs Order through Air Attack/AOBD Or JDIDC
HEMG:				AIR/GRD Secondary				169.7125 (A41)		
ATGS: Jeremy Cowie			541-575-3736	AIR/GRD IA Primary				167.3750		
ATGS:				AIR/GRD IA Secondary				168.6375		
JDIDC:			541-575-3110	UNICOM				122.800	NOTES:	Grant Co Regional Airport, Haley Walker 541-575-1151 or 530-567-5987  email cost: <a href="mailto:jdairbase@gmail.com">jdairbase@gmail.com</a>
				DECK				163.1000		

**9. HELICOPTERS**

FAA N#	TY	MAKE/MODEL	BASE	START	AVAIL	REMARKS	FAA N#	TY	MAKE/MODEL	BASE	START	AVAIL	REMARKS
519FF	3	A Star B3	John Day	0800	0830	A-13, Helitack ,Medivac Buckets	462WY	1	CH-46	John Day	0800	0830	A-7 Bucket
38HX	3	AS-350 A Star	Baker	0800	0830	A-63 Short Haul/Buckets	448JS	1	S-61	John Day	0800	0830	A-22 Bucket
17HX	2	Bell 205++	John Day	0800	0830	A-102 Buckets/Helitack Crew 10 personnel	83BH	1	UH-60	John Day	0800	0830	Bucket A-29



# INCIDENT RADIO COMMUNICATIONS PLAN (ICS 205)

Controlled Unclassified Information//Basic

<b>1. Incident Name:</b>	<b>2. Date/Time Prepared:</b>	<b>3. Operational Period: DAY</b>	
CROCKETS KNOB	Date: 09/06/2022 Time: 2000	Date/Time From: 09/07/2022 0600 WED	Date/Time To: 09/07/2022 1800 WED

**4. Basic Radio Channel Use:**

Zone Group	Ch #	Function	Channel Name/Trunked Radio System Talkgroup	Assignment	RX Freq	RX Tone/NAC	TX Freq	TX Tone/NAC	Mode (A,D, or M)	Remarks
	1	COMMAND	CMD 1	ALL DIVS	170.4250	131.8	168.0750	131.8	A	NORTH - INDIAN ROCK LO
	2	COMMAND	CMD 2	ALL DIVS	170.4125	131.8	165.9625	131.8	A	SOUTH - DIXIE BUTTE LO
	3	COMMAND	CMD 3	DIV G / M	171.5375	131.8	166.3625	131.8	A	N DESOLUTION BUTTE LO
	4	TACTICAL	TAC 4	DIV A	168.0500	131.8	168.0500	131.8	A	
	5	TACTICAL	TAC 5	DIV E	168.2000	131.8	168.2000	131.8	A	
	6	TACTICAL	TAC 6	DIV M	168.6000	131.8	168.6000	131.8	A	
	7	TACTICAL	TAC 7	DIV G / CONTING	166.7250	131.8	166.7250	131.8	A	DIVISION G / CONTINGENCY
	8	TACTICAL	TAC 8	DIV S / Z	166.7750	131.8	166.7750	131.8	A	DIVISION S / Z
	9	TACTICAL	TAC 9	STRUCTURE / IA	168.2500	131.8	168.2500	131.8	A	STRUCTURE / IA
	10	COMMAND	N DIXIE	ALL DIVS	172.4000	131.8	166.2000	123.0	A	IA / BACKUP IF CMD NET INOP
	11	TACTICAL	MAF TAC	IA	168.3125	131.8	168.3125	131.8	A	IA ONLY
	12	AIR TO GROUND	A/G 38	MALHEUR	167.3750		167.3750		A	A/G FOR MALHEUR N.F.
	13	AIR TO GROUND	A/G PRI	ALL DIVS	167.0750		167.0750		A	AIR OPS ONLY
	15	AIR TO GROUND	VMED 29	ALL DIVS	155.3475	156.7	155.3475	156.7	A	MEDICAL EVAC ONLY
	14	AIR TO GROUND	A/G SEC	ALL DIVS	169.7125		169.7125		A	AIR OPS ONLY
	16	AIR GUARD	AIRGUARD	ALL DIVS	168.6250		168.6250	110.9	A	EMERGENCY AIR OPS ONLY

**5. Special Instructions:** COMMUNICATIONS (208) 891-8093

<b>6. Prepared By</b> (Communications Unit Leader)	Name: MISSY PARKER	Signature: <i>Missy Parker</i>
ICS 205	IAP Page	Date/Time: 09/06/2022 2000

Controlled Unclassified Information//Basic

# Crocketts Knob Fire—READ UPDATE

## WHAT IS A READ??

### A READ is A RESOURCE ADVISOR

#### THE READ's MISSION:

The Resource Advisor provides professional knowledge and expertise for the protection of natural, cultural, and other resources within an emergency incident environment. The READ supports the IMT by providing information about impacted resources or potential hazards. This can help the IMT to proactively create suppression plans that mitigate damage to resources. Trained Resource Advisors can help IMTs reduce effects on resources and lower overall suppression repair costs.

Fireline qualified READs are called REAFs

(But the term "READ" is commonly used to describe both)

All READs on the Crocketts Knob Fire are REAFs.

**We are a resource here to offer help and guidance! Most READ/Fs are passionate about at least one resource and love to share information about that resource. Please reach out to any READ/F assigned to the fire for any resource questions!**

# **THREE DAY DEMOB LIST**

## **Wednesday 9-7-22**

### **CREWS**

C-17 1900 (CR2I) SRV #10

### **EQUIPMENT**

E-27.1 0600 (EMPF) HOLT, BRADLEY  
E-36 0730 (ENG6) AAA THUNDERBOLT  
E-29 0900 (MBM2) MORRIS FORESTRY LLC - 834891  
E-82 1730 (ENG6) AK-KKS K-62  
E-83 1730 (ENG6) FAIRBANKS 65  
E-84 1745 (ENG6) FAIRBANKS 66  
E-85 1745 (ENG6) FAIRBANKS 67  
E-86 1800 (ENG6) ALASKA STRIKE TEAM M-68

### **OVERHEAD**

O-163 0900 (PIO2) CRONQUIST, NICHOLAS  
O-119 1800 (TFLD) STILLIE, BRITTANY  
O-66 1900 (HMGB) COLLINS, JACOB LEWIS

## **Thursday 9-8-22**

### **CREWS**

C-6 0600 (CR2I) NW - OR-MAF #4 (PCRD)  
C-18 0630 (CR2I) VALE BLM SRV #12

### **OVERHEAD**

O-29 0645 (HEBM) DAVIS, TYLER  
O-30 1100 (EQTR) MILLER, BRENN VALRIE

## **Friday 9-9-22**

### **CREWS**

C-8 0600 (CRW1) INYO IHC

### **EQUIPMENT**

E-35 0615 (ENG6) STRIKE BACK  
E-37 0630 (ENG4) AAA THUNDERBOLT FIRE SVC  
E-10 0700 (CHP2) HINER JR, THEODORE W  
E-30 0730 (CHP2) GRAYBACK FORESTRY

### **Crocketts Knob Fire DEMOB Procedures**

1. Complete CTRs and follow Finance IAP Message.
2. Return any checked-out equipment and/or radios.
3. All Contractors complete Ground Support inspection at Taylor Flats.
4. ALL VEHICLES MUST GO THROUGH THE WEED WASH LOCATED JUST WEST OF PRAIRIE CITY – FOLLOW SIGNAGE.
5. Contact DEMOB at 509-432-6143 to finalize process.  
DEMOB Email: 2022.crockettsknob.demob@firenet.gov

**NOTE: All air travelers need to contact DEMOB to make arrangements 72 hours prior to departure.**



# **Crocketts Knob Fire Information 541-625-0892**



[2022.crockettsknob@firenet.gov](mailto:2022.crockettsknob@firenet.gov)

<https://www.facebook.com/CrockettsKnobFire>

<https://inciweb.nwccg.gov/incident/8355/>

## **Talking Points**

- The Crocketts Knob fire is being controlled using a Full Suppression Strategy with Public and Firefighter Safety and value protection as top priorities.
- Firefighters have been using mapping technology to accurately locate and identify structures, values, and hazards that may be impacted by the fire as well as landmarks that may be useful in fighting the fire.



# Human Resource Message



Contact:

Susie Manezes (ICP), 602-571-9327 or [smanezes@blm.gov](mailto:smanezes@blm.gov) or  
Jon Tipton (Taylor Flats), 971-347-7314 or [jonathan.tipton@usda.gov](mailto:jonathan.tipton@usda.gov)

## Crocket's Knob Fire- September 7, 2022

**High speed internet connection  
(e.g., Cable internet & Fiber)**

**5<sup>th</sup> Generation (5G) Cellular Service**

### Mindfulness of Shared Resources

As we all get further into our assignments, the desire to connect with families and friends prior to our return increases in addition to a measure of boredom while in camp.

Efforts are ongoing to increase local bandwidth particularly in camp to address everyone's needs, but the ask in the meantime is to focus our collective shared (and limited bandwidth) on the activities that don't consume large amounts of that capacity (and disadvantage others from being able to use it at all).

Approached together we can help improve everyone's experience at the incident.

**4<sup>th</sup> Generation (4G) Long Term Evolution Cellular**

Video Streaming Services  
**NO**

Video and picture based social media  
**NO**

Work Activities (e.g., CTRs, Fuel transactions)  
**YES**

Phone calls with loved ones  
**YES**

**Collecting food donations for the Local Food Share Program. You may drop off your food donations at the HR Yurt or any of the boxes labeled Food Donations!**

**THANK YOU!**

Please focus internet use toward completing and sending in CTRs, Shift Tickets, & Fuel Transactions. Please limit streaming Video at Taylor Flats Base Camp. Thank you for your cooperation!



**Feeding the Community**



# **Logistics Message Crockets Knob Fire**

**ICP @ 740 Overholt St, Prairie City Oregon 97869**

**Lead Medical Unit Diana Braun Phone 509-348-0091 or by Radio on CMD Channel**

**Communications: Crockets Knob ICP**  
24-Hours  
Phone: **208-891-8093**

**Meal Service Hours:** Breakfast/Lunch at 0700  
Dinner at 1800

**\*\* Note:** Meal count changes need to be submitted to BCMG Tully Pritchett  
4 hours prior to delivery time.

**Shower Hours:** 0430 to 1200  
1400 to 2130

---

## **Taylor Flats Base Camp**

**4.5 miles North of Hwy 26 and Hwy 7 Junction on Hwy 7**

**Supply: 0630-2130**

All 'S'# orders

call or text Jeremy Marquardt at 360-880-4244

or

email [jeremy.marquardt@DNR.WA.GOV](mailto:jeremy.marquardt@DNR.WA.GOV)

**Meals:** Breakfast 0500-0900; Dinner 1800-2200

**Showers:** 0500-1200 and 1600-2200

**Ground Support:** 0600-2130

**Medical Support :** 0530-2130



# Finance Message



Finance Email: [2022.crocketsknob.finance@firenet.gov](mailto:2022.crocketsknob.finance@firenet.gov)

SUBJECT: *Include Key Word* **TIME** for Overhead, Crews & Cooperators

SUBJECT: *Include Key Word* **EQUIPMENT** for Contract Resources

## Finance Contact Numbers

PERSONNEL: 509-823-6642

EQUIPMENT: 208-890-4869

Finance Section Chief: 509-423-6011

Please Scan this QR code to send all required documents to finance or use the email below



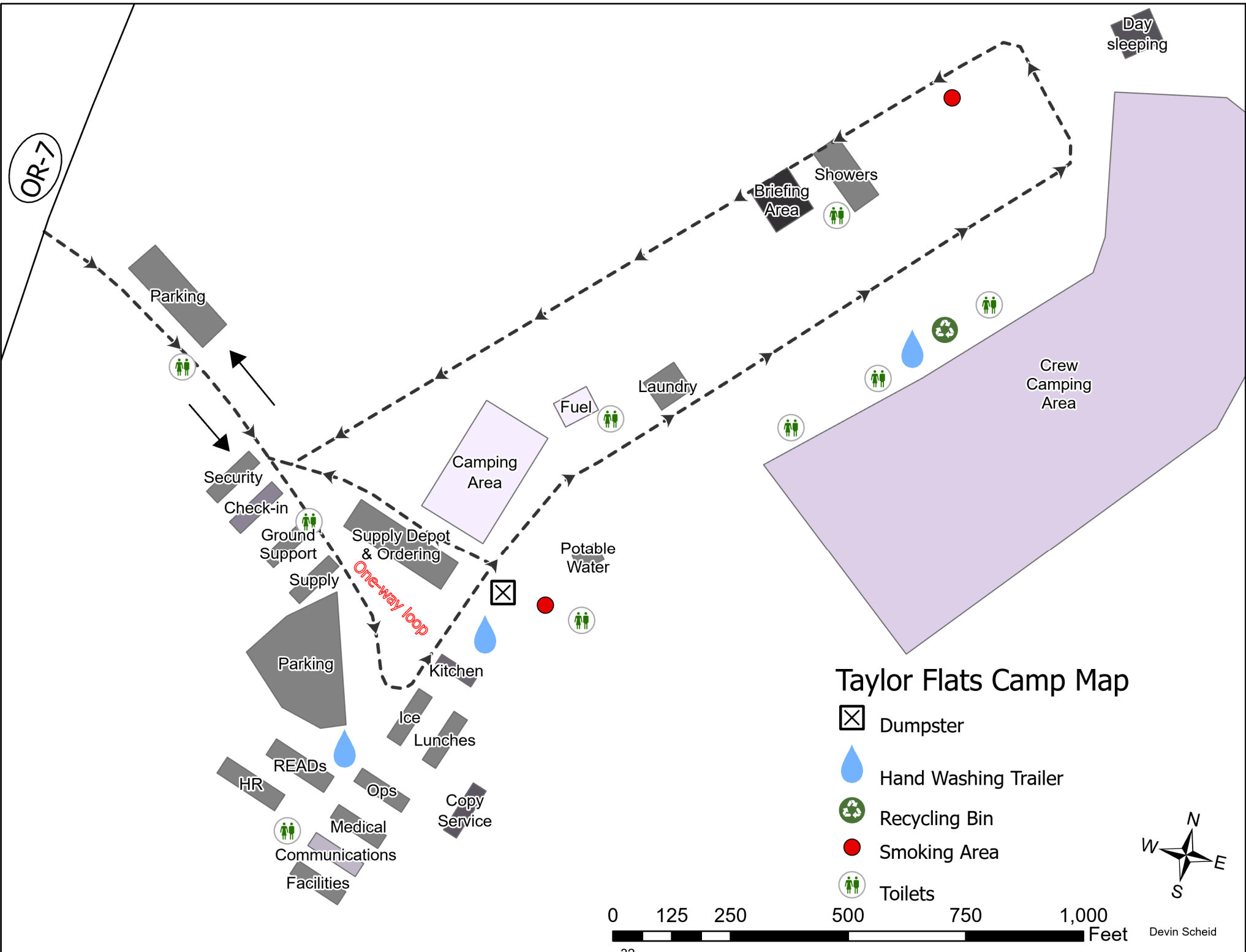
**FINANCE CHECK IN:** [2022.crocketsknob.finance@firenet.gov](mailto:2022.crocketsknob.finance@firenet.gov)

PLEASE ENSURE THE BELOW DOCUMENTS ARE EMAILED

Overhead, Crews & Cooperator Resources	Contract Resources
<ul style="list-style-type: none"> <li>• <b>Check-In:</b> Crew Manifest, Cooperative Agreement (if applies), AD Hire Letter, Resource Order</li> <li>• <b>Daily:</b> Crew Time Report (CTR), Shift Tickets</li> <li>• <b>Demob:</b> Signed OF288, Final Equipment Use Invoice (Cooperator) If you don't have a way to sign you must come to finance.</li> </ul>	<ul style="list-style-type: none"> <li>• <b>Check-In:</b> Resource Order, Contract/VIPR Agreement (make sure you have your UEI, Pre-Inspection</li> <li>• <b>Daily:</b> Shift Tickets, receipts (fuel issues, claims, etc.)</li> <li>• <b>Demob:</b> Contractor Evaluations, Final Shift Tickets and receipt(s) for Addition/Deductions, Post-Inspection, Final Signed Invoices If you don't have a way to sign you must come to finance</li> </ul>

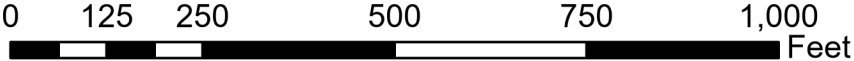
## REMINDERS

- ★ PLEASE ENSURE YOU INCLUDE LOCATION OF WHERE YOU ARE WORKING (BRANCH OR DIVISION) ON CTR OR SHIFT TICKET. MAKE SURE C OR E # IS ON THE CTR OR SHIFT TICKET
- ★ PLEASE SHOW YOUR LUNCH BREAK
- ★ PLEASE USE MILITARY TIME (0001-2400)
- ★ WHEN CLAIMING HAZARD PAY YOU MUST INCLUDE THE SUPPRESSION ACTION BEING PERFORMED. THIS INCLUDES OPERATIONS WHICH DIRECTLY SUPPORT CONTROL OF FIRE (E.G., ACTIVITIES TO EXTINGUISH THE FIRE, FIREFIGHTING, GROUND SCOUTING, SPOT FIRE PATROLLING, SEARCH AND RESCUE OPERATIONS, AND BACKFIRING).
- ★ WHEN SIGNING YOUR OF-288 or OF-286 PLEASE DO NOT LOCK IT or PROTECT THE SIGNATURE, WE HAVE TO BE ABLE TO SIGN IT AND SEND YOU A COPY



### Taylor Flats Camp Map

-  Dumpster
-  Hand Washing Trailer
-  Recycling Bin
-  Smoking Area
-  Toilets



Devin Scheid

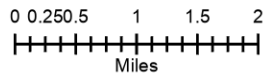




# Crocketts Knob ORMAF-022199 IAP Map

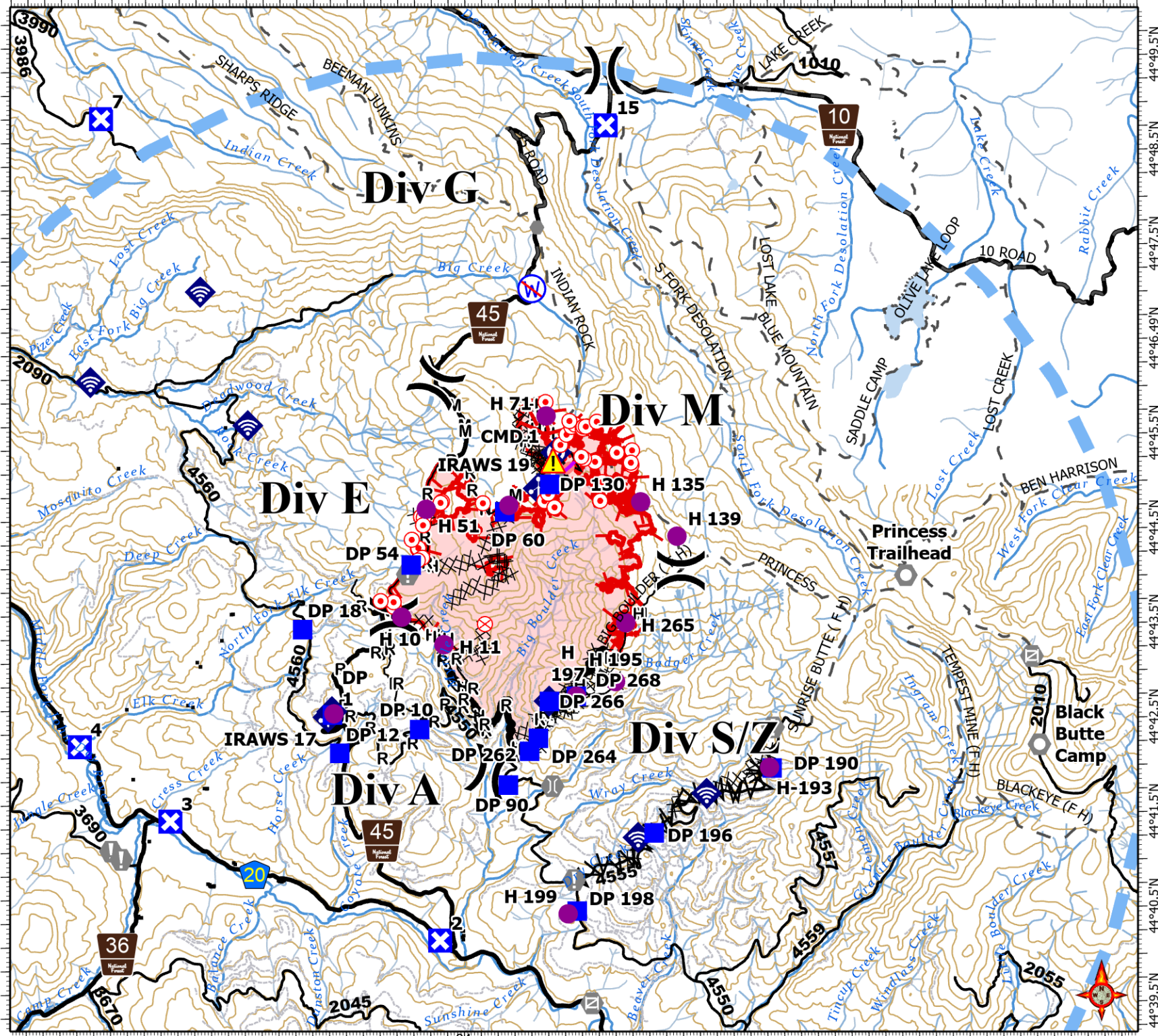
09/07/2022 Day Shift  
4305 acres at 09/05/2022 @ 2159

- Dip Site
- Helispot
- Division Break
- Drop Point
- Closure
- Hot Spot - Spot Fire
- Fire Origin
- Value at Risk
- Other
- Landmark
- Gate
- Bridge
- Mobile Weather Unit
- Internet Access
- Repeater
- Hazard
- Restricted Water Source
- Completed Dozer Line
- Completed Fuel Break
- Completed Hand Line
- Completed Mixed Construction Line
- Completed Road as Line
- Retardant Drop
- Temporary Flight Restriction
- Fire Edge (Field Collection)
- Contained
- Uncontained
- Fire Area



S. Bushnell  
09 06 22  
2054 Hours

Acres from IR and GPS  
Datum: North American 1983



# Coordinate Table

FC Point Type	Label	Latitude WGS84 DDM	Longitude WGS84 DDM
Camp	Taylor Flats Base Camp	44° 37.492' N	118° 27.375' W
Closure	1	44° 38.473' N	118° 37.716' W
Closure	15	44° 48.847' N	118° 40.688' W
Closure	2	44° 40.261' N	118° 43.341' W
Closure	3	44° 41.562' N	118° 47.318' W
Closure	4	44° 42.362' N	118° 48.647' W
Closure	5	44° 44.507' N	118° 50.862' W
Closure	6	44° 46.660' N	118° 50.349' W
Closure	7	44° 48.997' N	118° 48.192' W
Closure	8	44° 51.052' N	118° 48.674' W
Dip Site	Heli-well	44° 39.010' N	118° 40.536' W
Drop Point	DP 1	44° 42.662' N	118° 44.886' W
Drop Point	DP 10	44° 42.495' N	118° 43.594' W
Drop Point	DP 12	44° 42.257' N	118° 44.787' W
Drop Point	DP 130	44° 45.063' N	118° 41.604' W
Drop Point	DP 18	44° 43.570' N	118° 45.308' W
Drop Point	DP 190	44° 42.027' N	118° 38.372' W
Drop Point	DP 196	44° 41.363' N	118° 40.138' W
Drop Point	DP 198	44° 40.550' N	118° 41.299' W
Drop Point	DP 262	44° 42.246' N	118° 41.967' W
Drop Point	DP 264	44° 42.383' N	118° 41.834' W
Drop Point	DP 266	44° 42.770' N	118° 41.659' W
Drop Point	DP 268	44° 42.820' N	118° 41.260' W
Drop Point	DP 54	44° 44.234' N	118° 43.682' W
Drop Point	DP 60	44° 44.781' N	118° 42.280' W
Drop Point	DP 90	44° 41.893' N	118° 42.291' W
Helibase		44° 24.076' N	118° 57.727' W
Helispot	H-193	44° 42.035' N	118° 38.409' W
Helispot	H 10	44° 43.684' N	118° 43.835' W
Helispot	H 11	44° 43.387' N	118° 43.214' W
Helispot	H 135	44° 44.863' N	118° 40.257' W
Helispot	H 139	44° 44.494' N	118° 39.727' W
Helispot	H 15	44° 42.675' N	118° 44.864' W
Helispot	H 195	44° 42.968' N	118° 40.675' W
Helispot	H 197	44° 42.820' N	118° 41.260' W
Helispot	H 199	44° 40.523' N	118° 41.434' W
Helispot	H 265	44° 43.588' N	118° 40.508' W
Helispot	H 51	44° 44.821' N	118° 43.445' W
Helispot	H 59	44° 44.848' N	118° 42.216' W
Helispot	H 71	44° 45.787' N	118° 41.642' W
Incident Command Post	Prairie City	44° 27.285' N	118° 42.554' W
Internet Access		44° 42.720' N	118° 41.769' W
Internet Access		44° 42.698' N	118° 44.894' W
Internet Access		44° 41.317' N	118° 40.378' W
Internet Access		44° 41.771' N	118° 39.349' W
Internet Access		44° 45.733' N	118° 46.076' W
Internet Access		44° 47.152' N	118° 46.753' W
Internet Access		44° 46.215' N	118° 48.406' W



## COVID-19 Mitigations for Crockets Knob Fire

- Masks are not required indoors unless working in a county with a HIGH COVID-19 community level. Currently, Grant County community level is MODERATE (masking indoors is optional).
- Conduct daily verbal screening checks within crews, report any COVID-like symptoms to your direct supervisor. Supervisors should report any positive symptoms to the Medical Unit for next steps.
- Observe social distancing standards while waiting in line for food and limit contact with others outside of your crew in the food service line. If possible, send crew representatives to pick up meals.
- Practice good personal hygiene, wash hands frequently and disinfect high-traffic areas on a regular basis.
- Limit close contact between firefighters and the public as much as possible to prevent exposure and spread.





# EMERGENCY PLAN INCIDENT WITHIN AN INCIDENT

## ON SCENE INCIDENT COMMANDER

In the event of an accident or medical incident of any size, your primary responsibility is to ENSURE that the victim(s) receive prompt and effective Triage, Treatment, Extrication and Transport.

- **ENSURE THE MEDICAL INCIDENT REPORT IN THE INCIDENT ACTION PLAN IS BEING USED AND FOLLOWED- \*IF DETERMINED TO BE A GREEN, DO NOT DECLARE EMERGENCY TRAFFIC AND ONLY COMPLETE LINE 1-4 ON MIR\*.**
- Conduct size-up of the incident nature of accident, number type of resources involved, latitude and longitude location (DD°MMM.MM format): notify incident communications center and supervisor, request assistance as needed.
- Order and coordinate medical and support response to the accident.
- Evaluate special needs (law enforcement, haz mat, etc.).
- Clear the command frequency if medical emergency, coordinate with incident communications and air attack for air medical transportation needs.
- Preserve and photograph the scene for accident investigation.
- Remain aware of surroundings and the status of the main incident (delegate personnel to monitor the main fire) to ensure safety of medical treatment personnel.
- Until relieved, supervise and manage all personnel involved at the incident scene.

# MEDICAL PLAN (ICS 206 WF)

<b>Incident/Project Name</b>		<b>1. Operational Period</b>					
Crockets Knob		September 7, 2022 0600-1800					
<b>2. Ambulance Services</b>							
<b>Name</b>	<b>Complete Address</b>	<b>Phone</b>	<b>Advanced Life Support (ALS)</b>				
			Yes	No			
Blue Mountain Ambulance	170 Ford Rd John Day, OR	Command/911	X				
<b>3. Air Ambulance Services</b>							
<b>Name</b>	<b>Phone</b>	<b>Location</b>					
Life Flight Network	Command/911	20-30 min flight - LaGrande, OR					
Life Flight Network	Command/911	Pendleton, OR					
<b>4. Hospitals</b>							
<b>Name Complete Address</b>	<b>Coordinate Standard Degrees Decimal Minutes DD° MM.MMM' N - Lat DD° MM.MMM' W - Long</b>	<b>Travel Time From Crockett's Knob Air Gnd</b>	<b>Phone</b>	<b>Helipad Yes No</b>	<b>Level of Care Facility</b>		
Blue Mountain Hospital 170 Ford Rd John Day, OR	<b>Lat:</b> 44°25.06' N	20 mins 1.5 hrs	541-575-1311	X	Level 4		
	<b>Long:</b> 118°57.60' W						
St Charles Medical Center 2500 NE Neff Rd Bend, OR	<b>Lat:</b> 44°4.1667' N	1 hr 4 hrs	541-882-6311	X	Level 2		
	<b>Long:</b> 121°16.0833' W						
Legacy Emanuel 2801 N Gantenbien, Portland, OR	<b>Lat:</b> 45°32.616' N	2 hrs 5 hrs	503-413-4321	X	Level 1 Trauma Burn Center		
	<b>Long:</b> 122°6695' W						
St Alphonsus Medical Center 3325 Pocahontas Rd Baker City, OR	<b>Lat:</b> 44°52.1108' N	45 mins 1.75 hrs	541-523-6461	X	Level 2		
	<b>Long:</b> 117°51.1856' W						
	<b>Long:</b> 118°48.4346' W						
<b>5. Division Branch Group</b>	<b>Capability</b>	<b>Personnel</b>					
Div. A		(E-27) Ambo 1 (O-96) Medic 4					
Div. E		(O-94) Medic 1 (O-93) Medic 2 (O-7) EMT (E-87) Blackwoods REM					
Div. M		Utilize nearest medical resource					
Div. S/Z		(O-9) REM 9 (E-51) Ambo 2					
Div. G		Utilize nearest medical resource					
Contingency		(O-95) Medic 3					
Taylor Flats/Bates SP		(E-88) Ambo 3					
<b>6. Prepared By (Medical Unit Leader)</b>		<b>7. Date/Time</b>	<b>8. Reviewed By (Safety Officer)</b>			<b>9. Date/Time</b>	
Diana Braun <i>Diana Braun</i>		09/06/2022 1800	Jack Cates <i>Jack Cates</i>			09/06/2022 1800	

# Short-Haul Operations

## CAPABILITIES

- During an operational Short-Haul the helicopter is capable of inserting Short-Haulers into an area with tight canopy cover and/or technical terrain.
- Haul line lengths range from 100 feet to 350 feet.
- Short hauler and/or medical gear can be delivered to the medical scene even if extraction by short-haul is not necessary.

## ORDERING

- EMT or Medical Incident IC determines medical extraction is required.
- Follow local established procedures and/or Medical Incident Report (MIR) in the IRPG.
- Confirm aircraft type, call sign, estimated time of arrival and frequency.
- Give site selection information when ordering: hazards (i.e. ash, smoke, snags, aerial), tree height, terrain, and patient transport configuration (supine or seated position). Repeat hazards and give updated weather conditions as well as brief patient update to responding helicopter.

**PROCESS:** The helicopter will fly to the coordinates provided. They will make contact with ground personnel on scene with the patient using an identified air-to-ground frequency. The helicopter will complete a short-haul recon and size up, gather patient update information and then fly to a landing zone (LZ) to configure for short-haul operations. The helicopter will be monitoring the appropriate air-to-ground, air guard and victor frequencies. From this point, ground resources should only contact the helicopter in case of an emergency. During the insertion and extraction process ground personnel must be clear of the area.

## ON SCENE: EXPECT THE FOLLOWING

- 1 or 2 rescuers (at least one qualified as an EMT or higher)
- Backboard (if needed and not already on scene)
- All equipment necessary for patient extraction

The Patient Extraction Bag accommodates most backboards.  
-A patient on a backboard, TRS, SKED or litter will be inserted into the bag.



The Seat Harness is used for patients not requiring the use of a backboard.



IAP INSERT



# MEDICAL PLAN (ICS 206 WF)

Controlled Unclassified Information//Basic

## Medical Incident Report

**FOR A NON-EMERGENCY INCIDENT, WORK THROUGH CHAIN OF COMMAND TO REPORT AND TRANSPORT INJURED PERSONNEL AS NECESSARY.**

**FOR A MEDICAL EMERGENCY: IDENTIFY ON SCENE INCIDENT COMMANDER BY NAME AND POSITION AND ANNOUNCE "MEDICAL EMERGENCY" TO INITIATE RESPONSE FROM IMT COMMUNICATIONS/DISPATCH.**

Use the following items to communicate situation to communications/dispatch.

1. CONTACT COMMUNICATIONS / DISPATCH (**Verify correct frequency prior to starting report**)

*Ex: "Communications, Div. Alpha. Stand-by for Emergency Traffic."*

2. INCIDENT STATUS: *Provide incident summary (including number of patients) and command structure.*

*Ex: "Communications, I have a Red priority patient, unconscious, struck by a falling tree. Requesting air ambulance to Forest Road 1 at (Lat./Long.) This will be the Trout Meadow Medical, IC is TFLD Jones. EMT Smith is providing medical care."*

Severity of Emergency / Transport Priority	<input type="checkbox"/> RED / PRIORITY 1 Life or limb threatening injury or illness. Evacuation need is IMMEDIATE <i>Ex: Unconscious, difficulty breathing, bleeding severely, 2° – 3° burns more than 4 palm sizes, heat stroke, disoriented.</i> <input type="checkbox"/> YELLOW / PRIORITY 2 Serious Injury or illness. Evacuation may be DELAYED if necessary. <i>Ex: Significant trauma, unable to walk, 2° – 3° burns not more than 1-3 palm sizes.</i> <input type="checkbox"/> GREEN / PRIORITY 3 Minor Injury or illness. Non-Emergency transport <i>Ex: Sprains, strains, minor heat-related illness.</i>	
Nature of Injury or Illness & Mechanism of Injury		<i>Brief Summary of Injury or Illness (Ex: Unconscious, Struck by Falling Tree)</i>
Transport Request		<i>Air Ambulance / Short Haul/Hoist Ground Ambulance / Other</i>
Patient Location		<i>Descriptive Location &amp; Lat. / Long. (WGS84)</i>
Incident Name		<i>Geographic Name + "Medical" (Ex: Trout Meadow Medical)</i>
On-Scene Incident Commander		<i>Name of on-scene IC of Incident within an Incident (Ex: TFLD Jones)</i>
Patient Care		<i>Name of Care Provider (Ex: EMT Smith)</i>

3. INITIAL PATIENT ASSESSMENT: *Complete this section for each patient as applicable (start with the most severe patient)*

Patient Assessment: See IRPG page 106

Treatment:

4. TRANSPORT PLAN:

Evacuation Location (if different): *(Descriptive Location (drop point, intersection, etc.) or Lat. / Long.)* Patient's ETA to Evacuation Location:

Helispot / Extraction Site Size and Hazards:

5. ADDITIONAL RESOURCES / EQUIPMENT NEEDS:

*Example: Paramedic/EMT, Crews, Immobilization Devices, AED, Oxygen, Trauma Bag, IV/Fluid(s), Splints, Rope rescue, Wheeled litter, HAZMAT, Extrication*

6. COMMUNICATIONS: Identify State Air/Ground EMS Frequencies and Hospital Contacts as applicable

Function	Channel Name/Number	Receive (RX)	Tone/NAC *	Transmit (TX)	Tone/NAC *
COMMAND					
AIR-TO-GRND					
TACTICAL					

7. CONTINGENCY: **Considerations:** *If primary options fail, what actions can be implemented in conjunction with primary evacuation method? Be thinking ahead.*

8. ADDITIONAL INFORMATION: *Updates/Changes, etc.*

**REMEMBER:** Confirm ETA's of resources ordered. Act according to your level of training. Be Alert. Keep Calm. Think Clearly. Act Decisively.

Controlled Unclassified Information//Basic