

# Incident Action Plan CROCKETS KNOB

September 8<sup>th</sup>, 2022  
Operational Period 0600-1800



SCAN QR CODE

For  
BRIEFING LINK  
DOWNLOAD IAP  
DOWNLOAD MAPS  
Send in PHOTOS  
CHECK-IN  
Submit TIME to FINANCE



**OR-MAF-022199**

**P6 POXK (0604)  
221 IWR**

This page intentionally left blank.





## INCIDENT OBJECTIVES (ICS 202)

<b>1. Incident Name:</b>	<b>2. Operational Period: DAY</b>	
CROCKETS KNOB	Date/Time From: 09/08/2022 0600      THU	Date/Time To: 09/08/2022 1800      THU
<b>3. Objective(s):</b>		
<ul style="list-style-type: none"> <li>• Identify, evaluate and reduce risks to firefighters and the public through the use of Deliberate Risk Assessment process.</li> <li>• Minimize acres burned and impacts to communities and infrastructure by completing a strategic risk assessment to guide operations in the development of strategies and tactics to be implemented by fire personnel.</li> <li>• Protect tribal, cultural, aquatic and wildlife resources, and sensitive plant sites.</li> <li>• Provide Initial Attack response and assistance for private and public lands within the delegated area.</li> <li>• Maintain and enhance relationships with cooperators, stake holders, landowners, and communities by providing accurate and timely information.</li> <li>• Manage cost commensurate with values at risk and maintain fiscal accountability.</li> <li>• Treat each other with dignity and respect and act in a professional manner while on the fire and in the community.</li> <li>• Ensure COVID-19 best management practices are in place and follow local CDC guidelines.</li> </ul>		
<b>4. Operational Period Command Emphasis:</b>		
Implement strategies and tactics to achieve incident objectives with the least amount of risk practical and the highest probability of success.		
<b>General Situational Awareness:</b>		
Conditions remain hot and dry and fuels are still highly receptive to fire spread. Expect the possibility of new starts from yesterday's lightning that you may need to assist with. Our fire still has potential to escape control lines, ensure that mop-up standards are being met and adequate patrols are occurring. Maintain accountability of all assigned resources while engaged on the fireline.		
<b>5. Site Safety Plan Required?</b> Yes <input type="checkbox"/> No <input checked="" type="checkbox"/>		
<b>Approved Site Safety Plan(s) Located</b>		
<b>6. Incident Action Plan</b> (the items checked below are included in this Incident Action Plan):		
<input checked="" type="checkbox"/> ICS 202 <input checked="" type="checkbox"/> ICS 203 <input checked="" type="checkbox"/> ICS 204 <input checked="" type="checkbox"/> ICS 205 <input type="checkbox"/> ICS 205A <input checked="" type="checkbox"/> ICS 206	<input type="checkbox"/> ICS 207 <input type="checkbox"/> ICS 208 <input checked="" type="checkbox"/> ICS 220 <input checked="" type="checkbox"/> Map/Chart <input checked="" type="checkbox"/> Weather Forecast/Tides/Currents	<b>Other Attachments:</b> <input checked="" type="checkbox"/> HR MESSAGE <input checked="" type="checkbox"/> UNIT LOG <input type="checkbox"/> _____ <input type="checkbox"/> _____
<b>7. Prepared by:</b> JILL JOHNSON	<b>Position/Title:</b> PSC2	<b>Signature:</b> <i>Jill Johnson</i>
<b>8. Approved by Incident Commander:</b>	<b>Name:</b> BOB SHINDELAR	<b>Signature:</b> <i>Bob Shindelar</i>
<b>ICS 202</b>	<b>IAP Page</b>	<b>Date/Time:</b> 09/07/2022 2030

## ORGANIZATION ASSIGNMENT LIST (ICS 203)

<b>1. Incident Name:</b>		<b>2. Operational Period:</b> DAY	
CROCKETS KNOB		Date/Time From: 09/08/2022 0600	THU Date/Time To: 09/08/2022 1800 THU
<b>3. Incident Commander(s) and Command Staff:</b>		<b>7. Operations Section:</b>	
IC/UC	JEFF DIMKE JEFF BOUSCHOR (T)	SUPPLY UNIT	JOHN KAUPA THAD FRATER (T)
DEPUTY	BOB SHINDELAR	GROUND SUPPORT UNIT	DAVE HARSH
SAFETY OFFICER	TROY CORN; JACK CATES	COMMUNICATIONS UNIT	MISSY PARKER JOHN LYONS (T)
INFORMATION OFFICER	JOEL BRUMM LIV STECKER	MEDICAL UNIT	EAMONN RYAN DIANA BRAUN
LIAISON OFFICER	SCOTT CRAWFORD JEFF SEVIGNEY (T)	SECURITY UNIT	TOM TAYLOR JOE ROBERTSON (T)
HUMAN RESOURCE SPECIALIST	SUSIE MANEZES (ICP) JON TIPTON (TF)	FOOD UNIT	ALEX LILLA
<b>4. Agency/Organization Representative(s):</b>		OPS SECTION CHIEF	
Agency/Organization	Name	TONY ENGEL JEROMY WILSON (T)	
USFS - MALHEUR	ANN NIESEN CRAIG TRULOCK	PLANNING OPS	KURT RANTA CODY ACORD (T)
USFS - MALHEUR	JOSHUA GILES	STAGING AREA	
USFS - UMATILLA	STEPHANEY KERLEY		
ODF	ALLISON RAYBURN	DIVISION/GROUP	A BOB HINDS IAN MCCORD (T)
LEAD READ	MATT SMITH (T)	DIVISION/GROUP	E JON STONELAKE ANDREW STINCHFIELD (T)
INTERAGENCY RESOURCE REPRESENTATIVE	PAUL GIBBS 951-903-4135	DIVISION/GROUP	G DJ GOLDSMITH
<b>5. Planning Section:</b>		DIVISION/GROUP	M BRAD BRYANT
CHIEF	JILL JOHNSON	DIVISION/GROUP	S/Z LARRY LEACH
DEPUTY	ERIC BLACK HOWARD JOHNSON (VIRTUAL)	DIVISION/GROUP	CONTINGENCY EZRA BUTTERFIELD
RESOURCES UNIT	MARGE HUTCHINSON	DIVISION/GROUP	STRUCTURE/IA JIM WALKOWSKI
SITUATION UNIT			
DOCUMENTATION UNIT	DEIDRE SMITH (VIRTUAL)	<b>7b. Air Operations Branch:</b>	
DEMOBILIZATION UNIT	MIKE HESTON (VIRTUAL)	AIR OPS BRANCH DIRECTOR	PAUL BALFOUR
FIRE BEHAVIOR ANALYST	DON STRAND	AIR SUPPORT SUPERVISOR	TIM LYDA
TRAINING SPECIALIST			
GIS SPECIALIST	SHAWN BUSHNELL		
TECHNOLOGY SUPPORT SPECIALIST	GEORGE JENKINS BRADLEY DILG	<b>8. Finance/Administration Section:</b>	
INCIDENT METEOROLOGIST	DEREK WILLIAMS JAMES WHITE (T)	CHIEF	CHERI FULLER
<b>6. Logistics Section:</b>		DEPUTY	CHRISTINA GOEBEL
CHIEF	KEVIN HAUGHTON (TAYLOR FLATS) PAUL FOOTEN (ICP) (T)	TIME UNIT	STEVE CROW
FACILITIES UNIT	LEE VENNING (TAYLOR FLATS) RICHARD CROWTHER (ICP)	PROCUREMENT UNIT	MARK BOHNET
BASE CAMP MANAGER	TULLY PRITCHETT(ICP) KARA DOESCHER (TAYLOR FLATS) (T)	INCIDENT CONTRACT PROJ INSP	ROB HECHINGER
		COST UNIT	KAY HIGH (VIRTUAL)
<b>9. Prepared By:</b>	<b>Name:</b> MARGE HUTCHINSON	<b>Position/Title:</b> RESL	<b>Signature:</b>
ICS 203	IAP Page	Date/Time: 09/07/2022 1348	<i>Marge Hutchinson</i>



# Fire Weather Forecast

**FORECAST NO: 12**  
**PREDICTION FOR: Thursday-Friday**  
**DATE: September 8<sup>th</sup> – 9<sup>th</sup>, 2022**  
**FORECAST ISSUED: 2000 September 7<sup>th</sup>, 2022**

**Fire: Crockets Knob**  
**UNIT: OR-MAF-022199**  
**Incident Meteorologist: James White (T)**  
**Signed: *James White***

**WEATHER DISCUSSION:** A deep upper level trough has brought much cooler and calmer weather. Most locations will return to the 70s. Dry arctic air, however, will keep conditions very dry with minimum RH in the teens. Winds will remain slightly enhanced but will generally be much less gusty than the past few days. Winds will generally be out of the north with peak afternoon gusts up to 20 mph. Overnight low temperatures will drop significantly tonight under clear skies, though RH recoveries will remain poor. Friday will be slightly warmer with similar RH and gentle terrain driven winds.

**TODAY:**

**WEATHER:** Mostly clear.  
**MAX TEMP:** Valleys: 80-84° (5-8° ↓)      **MIN RH:** Valleys: 10-15% (1-3% ↓)  
Ridgetops: 65-70° (9-12° ↓)      **Ridgetops:** 13-18% (1-3% ↓)  
**CHC WTG RAIN:** 0%      **LAL:** 1      **HAINES:** 4 (Low)

**WINDS:** Valleys: Morning downslope winds 2-4 mph. Upslope 6-10 mph gusts to 18 mph developing after 1200.  
**(20 feet)** Ridgetops: Northwest 4-8 mph in the morning transitioning to the north 10-14 mph with gusts to 20 mph late in the afternoon.

**MIXING HEIGHT:** Rising to 5,000 feet by 1600.

**TRANSPORT WIND:** North 8-12 mph.

**VISIBILITY:** 7-9 miles.

**INVERSION:** Very weak to no inversion

**TONIGHT:**

**WEATHER:** Mostly clear. Little to no inversion overnight.  
**MIN TEMP:** Valleys: 48-52° (7-10° ↓)      **MAX RH:** Valleys: 45-50% (2-5% ↑)  
Ridgetops: 46-50° (9-12° ↓)      **Ridgetops:** 35-40% (6-10% ↑)  
**CHC WTG RAIN:** 0%      **LAL:** 1

**WINDS:** Valleys: Downslope and down valley winds of 2-5 mph throughout the night  
**(20 FEET)** Ridgetops: Northwest winds 5-10 mph transitioning to the Northeast 3-6 mph after midnight.

**TRANSPORT WIND:** Northeast 6-8 mph.

**FRIDAY:**

**WEATHER:** Mostly clear with increased haze aloft.  
**MAX TEMP:** Valleys: 82-86° (1-3° ↑)      **MIN RH:** Valleys: 10-15% (No Change)  
Ridgetops: 67-71° (1-3° ↑)      **Ridgetops:** 13-18% (No Change)  
**CHC WTG RAIN:** 0%      **LAL:** 1      **HAINES:** 4 (Low)

**WINDS:** Valleys: Morning downslope winds 2-4 mph. Upslope 6-10 mph gusts to 15 mph developing after 1200.  
**(20 feet)** Ridgetops: Northeast 4-8 mph in the morning transitioning to the north 8-12 mph with gusts to 18 mph late in the afternoon.

**MIXING HEIGHT:** Rising to 5,000 feet by 1600.

**TRANSPORT WIND:** Northeast 8-12 mph.

**VISIBILITY:** 6-8 miles.

**INVERSION:** Very weak to no inversion

**EXTENDED OUTLOOK: Saturday through Tuesday:** Calmer weather will continue through the weekend. Slight warming is expected Saturday and Sunday with low elevation temperatures reaching back into the low 90's Sunday. High pressure will likely help form modest nightly inversions, helping keep upper elevation locations dry with very poor recoveries and daytime RH sticking in the teens. Cooler and moister weather is expected early next week with a slight chance of wetting rain by Tuesday.

Nearby Weather Observations →



## FIRE BEHAVIOR FORECAST

FORECAST NUMBER: 12	TYPE OF FIRE: WILDFIRE
FIRE NAME: Crockets Knob	OPERATIONAL PERIOD: Day Shift Sept 8, 2022
DATE ISSUED: Sept 7, 2022	TIME ISSUED: 2000 HOURS
UNIT: OR-MAF	Don Strand NW IMT12 FBAN

### INPUTS

**WEATHER SUMMARY:** See attached weather forecast. Max temps – near 70- degrees, min RH in the mid-teens. Winds – upslope 6 to 10 mph with gusts to 18 mph after 1200 hrs. Ridgetop winds – Northwest 4 to 8 mph in the morning. North 10 to 14 mph with gusts to 20 mph in the late afternoon. Haines Index 4 (low).

**FUELS:** Fuels consist of brush, dense regeneration with a surface litter of large down wood. The fire area also contains snags and areas with remnant live trees which survived the 1996 fire.

Live fuel moistures in the Ceanothus have lowered and are estimated to be near 95%. 1000-hour dead fuel moistures are now 9%. 10-hr and 100-hr fuel moistures are in the critically dry range.

Energy Release Component forecasted for today is near the 99<sup>th</sup> percentile.

### OUTPUTS

#### FIRE BEHAVIOR

**GENERAL: HEADS UP FIRE DAY**

Fire behavior potential remains elevated due to dry fuels and humidity in the mid-teens but with less wind. Expect smoldering and creeping fire behavior with isolated areas with backing and flanking in the interior areas of dirty burns. Chance of isolated torching with spotting still exists.

- Sub alpine trees are present in the upper elevations and can torch, producing numerous fire brands.
- Spot fires initiate quickly and are difficult to suppress.

POI: near 70%. Maximum spotting distance is near 1000 feet.

Head fire rates of spread in the surface fuels will be 4 to 6 feet/minute. On steeper slopes and with wind gusts, 12 to 18 feet/minute.

**SPECIFIC:**

DIV A/E: Potential for flare ups exists in interior islands.

DIV M: Potential for isolated torching in areas of dirty burns with timber litter under sub alpine fir.

DIV Z: Flare ups in unburned islands and areas of dirty burns is still possible.

**INITIAL ATTACK:** In the event resources respond to a new start, continue to update your Situational Awareness. Light fuels quickly react to winds/slope alignment and changes in wind direction.

**AIR OPERATIONS:** Expect areas of smoke haze/drift in the area.

### SAFETY

Areas of the fire were wind tested yesterday, so watch for fire damaged trees and snags that are hung up in other trees with potential to fall.

Reburn potential still exists in areas where heat treated ladder fuels are above open flames.

With cooler weather today, periodically take weather observation to maintain Situational Awareness.

# Safety Message

8 September 2022

INCIDENT: CROCKETS KNOB

OPERATIONAL PERIOD: 0600-1800

## TOPICS:

### **COMMON BARRIERS TO EFFECTIVE COMMUNICATION INCLUDE: (part 1 of 4)**

**Stress and out-of-control emotion.** When you're stressed or emotionally overwhelmed, you're more likely to misread other people, send confusing or off-putting nonverbal signals, and lapse into unhealthy knee-jerk patterns of behavior. To avoid conflict and misunderstandings, you can learn how to quickly calm down before continuing a conversation.

### **MANAGING THE MAYDAY**

The four (4) W's of sizeup: While we fight fires of varying complexities throughout the year, we rarely (and thankfully) deal with managing the EMS incident from beginning to end. This can be a daunting and stressful task for personnel. While the Emergency Plan is a useful tool, the four (4) W's is a simple, easy and provides you with a guide to establish much of the pertinent information needed to successfully manage the IWI.

"W"hat do I have?

"W"hat am I doing?

"W"hat do I need?

"W"ho is in command?

We call this the 30 second blueprint for success. While it may not answer all the questions needed, it certainly gets you off on the right foot.

***Review IRPG page 114; Multi-Casualty Triage System***

SAFETY OFFICER: Taija Corso, Troy Corn, Jack Cates

## Deliberate Risk Assessment-Hazard Summary

### 8 September 2022

Hazard	Mitigation	Post Risk
Extraction Time	Utilize shorthaul, agency and civilian medivac as treatment/timing dictates. Review ordering procedure for all aircraft. Establish redundant plans for evac if using aircraft. Identify medivac sites and helispots. Initiate ground transport to accident site for transport capability. Identify EMT/EMTP from resources assigned to division. Provide line qualified paramedics to each division as available. Review IWI protocol to ensure familiarity. Evaluate on-going need for repositioning medical personnel. Provide dust abatement on Helispots as needed. Recognize that ground extraction times in North half of fire are long, have plan in place for patient transfer to aviation if Red Medical.	HIGH
Aircraft	Utilize Air Attack. Ensure all resources are a safe distance from all bucket and retardant drops. Establish LCES. Utilize air to ground primary for fixed wing, air to ground 2 for bucket work as needed. Reference IRPG (Safe aircraft operations pg. 61-62). Ensure IA resources have coordination with unassigned local air resources to provide deconfliction.	HIGH
Hazard Trees	Use avoidance to limit exposure time. Fall ahead to avoid exposure. Use qualified fallers or alternate methods if needed. Conduct on-going risk analysis of all new and existing work areas. Follow Hazard Tree Safety Guidelines (IRPG page 20-21).	HIGH
Heavy Equipment	Post lookouts around equipment work areas. Establish communications with equipment boss and operator. Do not work down slope from equipment. Follow agency guidelines for chipping operations.	HIGH
Physical Factors	Maintain hydration schedule. Closely monitor work rate and implement rest periods. Maintain nutrition. Ensure adequate work/rest.	MODERATE
Fire Behavior	Maintain awareness of increased spotting distances with changes in fire weather. Be aware of burn windows and weather impacts and min/max RH for flashy fuels/local conditions. Report changes to FBAN and IMET. Establish MAP for disengagement to provide for an orderly retreat given lack of safety zones. Have a plan for disengagement that establishes a designated meeting point and maintains personnel accountability.	MODERATE
Steep Terrain/Gravity	Do not work crews above or below each other. Post lookouts for rolling material. Watch footing in loose soil, rock and around vegetation. Do not work below heavy equipment. Scout and identify travel routes.	MODERATE
Unburned Fuels/Firing Ops	Maintain awareness fuel dryness levels. Establish LCES. Ensure management action points are implemented and followed. Weather updates as needed during burning operations. Locate indirect firelines to minimize unburned fuels. Follow Interagency Ignition Guide. Ensure communications between all firing operations. Establish road security at all firing sites. Follow approved firing plan for unburned fuels. If utilizing aerial ignitions, make sure firing plan is in place and communicated to all resources and understood. Utilize separate Air to Ground for operation as appropriate.	MODERATE



## Deliberate Risk Assessment-Hazard Summary

### 8 September 2022

Transportation	Sign all incident roads that provide access to divisions to include mile markers and turnouts. Provide daily updated travel plan maps. Practice defensive driving. In local communities obey the posted speed limits in town and recognize the school zone around camp and the presence of children along streets and roadways. Use reader boards to provide advanced warning and control entry to base camp as needed. Identify and evaluate contingency and alternate escape and travel routes. Provide dust abatement and grading as needed. Provide advanced scouting for transport access and bridge weight restrictions. Evaluate road conditions for access, egress, and travel routes to the north of the fire for drivability and safety.	MODERATE
Initial Attack	Ensure identified IA resources are briefed of expectations and ensure communication plan is provided. Ensure resources are briefed on IA command structure. Provide identified crews with area maps.	MODERATE
ATV/UTV	Follow agency specific rules and regulations for proper PPE. Make sure operators are properly licensed and trained. Operate machine to the current and expected conditions. Do not overload machine.	MODERATE
Environmental Factors	Assign medical personnel to camp. Assess for known allergies and report to medical personnel. Obtain Bee Bopper/wasp spray and yellow jacket traps. Maintain an awareness of livestock, wildlife, and rattlesnakes. Identify and report allergies to your chain of command. Work with READs and GISS to evaluate and identify mineshafts. Refer to IRPG page 17 for thunderstorm safety.	MODERATE
Communication	Evaluate for dead zones prior to engagement. Utilize human repeaters as needed. Ensure coverage and accountability of resources in problem areas. Spiking resources must be in cell coverage. 24 staffing at JDICC will serve as a backup. Spike locations relayed to Ops daily.	LOW
Public Interaction	Ensure changes to closures and evacuation levels are fully communicated to incident personnel and the public. Implement area and road closures as necessary. Maintain a lookout for hunters in and out of closure areas. Maintain awareness of evacuation areas and provide accurate information dissemination.	LOW
Viral Transmission Mitigations, Communicable Disease	Maintain awareness of health, perform self-checks, maintain social distancing, wear face coverings in accordance with CDC recommendations. Report and isolate if not feeling well. Establish liaison with Grant County Public Health.	LOW

**Division/Group Assignment List (ICS 204 WF)**  
**Controlled Unclassified Information//Basic**

<b>1. Incident Name:</b>			<b>3.</b>			
CROCKETS KNOB			<b>Branch:</b>		<b>Division/Group</b>	
<b>2. Operational Period:</b> DAY			A			
Date/Time From: 09/08/2022 0600 THU		Date/Time To: 09/08/2022 1800 THU				
<b>4. Operations Personnel</b>						
<b>OPERATIONS CHIEF</b>		TONY ENGEL JEROMY WILSON (T) KURT RANTA; CODY ACORD (T)		<b>DIVISION/GROUP SUPERVISOR</b>		BOB HINDS IAN MCCORD (T)
<b>SAFETY OFFICER</b>		TROY CORN; JACK CATES		<b>AIR OPERATIONS BRANCH DIRECTOR</b>		PAUL BALFOUR
<b>5. Resources Assigned this Period</b>						
Strike Team / Task Force / Resource Designator		LWD	Leader	Number Persons	Drop Off PT./Time	Pick Up PT./Time
O-98 SOFR		09/12	CHRISTOPHER O'BRIEN	1	BASE CAMP/0600	BASE CAMP/1800
O-83 TFLD		09/10	ERIC METZGER	1	BASE CAMP/0600	BASE CAMP/1800
C-15 CRW1 PRESCOTT IHC		09/12	DARIN FISHER	23	GRAVEL PIT SPIKE/0600	GRAVEL PIT SPIKE/1800
C-5 CR2I GRAYBACK FORESTRY NCC 13B		09/15	DAVID BLANCO	18	BASE CAMP/0600	BASE CAMP/1800
C-24 CRW2 WEST COAST REFOREST CR07		09/15	BENJAMIN MARTINEZ	20	BASE CAMP/0600	BASE CAMP/1800
E-4 ENG6 GRAYBACK FORESTRY		09/20	CHUCK COFFMAN	3	BASE CAMP/0600	BASE CAMP/1800
E-39 ENG BIGFOOT		09/09	TRAVIS ALBRECHT	3	BASE CAMP/0600	BASE CAMP/1800
E-60 WTS2 ALL WET TRUCKING		09/10	ALEX WRIGHT	1	BASE CAMP/0600	BASE CAMP/1800
E-61 WTS2 ALL WET TRUCKING		09/10	WILLIAM HOOVER	1	BASE CAMP/0600	BASE CAMP/1800
E-12 UTV KD OUTDOORS			UNSTAFFED		BASE CAMP/0600	BASE CAMP/1800
E-27 AMB1 CASCADE MED TRANSPORT		09/13	BENJAMIN FLORES	2	BASE CAMP/0600	BASE CAMP/1800
O-96 EMPF MEDIC 4 FIRELINE MEDICS		09/11	MATT FREEBORN	1	BASE CAMP/0600	BASE CAMP/1800
<b>8. Division/Group Communication Summary</b>						
Function	Channel	RX Frequency N/W	RX Tone/NAC	TX Frequency N/W	TX Tone/NAC	Mode
COMMAND	1	170.4250	131.8	168.0750	131.8	A
COMMAND	2	170.4125	131.8	165.9625	131.8	A
TACTICAL	4	168.0500	131.8	168.0500	131.8	A
AIR TO GROUND	13	167.0750		167.0750		A
<b>9. Prepared By (Resource Unit Leader)</b>			<b>Approved By (Planning Section Chief)</b>		<b>Date</b>	<b>Time</b>
MARGE HUCHINSON			JILL JOHNSON		09/07/2022	1348

## Division/Group Assignment List (ICS 204 WF)

Controlled Unclassified Information//Basic

<b>1. Incident Name:</b>				<b>3.</b>			
CROCKETS KNOB				<b>Branch:</b>		<b>Division/Group</b>	
<b>2. Operational Period: DAY</b>							
Date/Time From: 09/08/2022 0600		THU		Date/Time To: 09/08/2022 1800		THU	
<b>4. Operations Personnel</b>							
<b>OPERATIONS CHIEF</b>		TONY ENGEL JEROMY WILSON (T) KURT RANTA; CODY ACORD (T)		<b>DIVISION/GROUP SUPERVISOR</b>		BOB HINDS IAN MCCORD (T)	
<b>SAFETY OFFICER</b>		TROY CORN; JACK CATES		<b>AIR OPERATIONS BRANCH DIRECTOR</b>		PAUL BALFOUR	
<b>6. Control Operations/Work Assignments:</b>							
<p>TASK: Continue mop-up and patrol Road 4550, slopover west of H-10 and dozer line east of H-10. Back-haul excess equipment.</p> <p>PURPOSE: Prevent fire growth that impacts private property, cultural and natural resources, and remaining timber stands within Summit Fire scar.</p> <p>END STATE: Fire is contained east of Road 45 and north of Road 4550</p>							
<b>7. Special Instructions:</b>							
Engines and tenders may NOT draft directly from natural water sources, such as creeks. Drafting will occur only from Fold-a-tanks.							
All resources check-in with DIVS when entering and leaving division.							
<b>8. Division/Group Communication Summary</b>							
Function	Channel	RX Frequency N/W	RX Tone/NAC	TX Frequency N/W	TX Tone/NAC	Mode	
COMMAND	1	170.4250	131.8	168.0750	131.8	A	
COMMAND	2	170.4125	131.8	165.9625	131.8	A	
TACTICAL	4	168.0500	131.8	168.0500	131.8	A	
AIR TO GROUND	13	167.0750		167.0750		A	
<b>9. Prepared By (Resource Unit Leader)</b>				<b>Approved By (Planning Section Chief)</b>		<b>Date</b>	<b>Time</b>
MARGE HUCHINSON				JILL JOHNSON		09/07/2022	1348

**Division/Group Assignment List (ICS 204 WF)**  
**Controlled Unclassified Information//Basic**

<b>1. Incident Name:</b>				<b>3.</b>		
CROCKETS KNOB				<b>Branch:</b>	<b>Division/Group</b>  E	
<b>2. Operational Period: DAY</b>						
Date/Time From: 09/08/2022 0600 THU		Date/Time To: 09/08/2022 1800 THU				
<b>4. Operations Personnel</b>						
<b>OPERATIONS CHIEF</b>		TONY ENGEL JEROMY WILSON (T) KURT RANTA; CODY ACORD (T)		<b>DIVISION/GROUP SUPERVISOR</b>		JON STONELAKE ANDREW STINCHFIELD (T)
<b>SAFETY OFFICER</b>		TROY CORN; JACK CATES		<b>AIR OPERATIONS BRANCH DIRECTOR</b>		PAUL BALFOUR
<b>5. Resources Assigned this Period</b>						
Strike Team / Task Force / Resource Designator	LWD	Leader	Number Persons	Drop Off PT./Time	Pick Up PT./Time	
O-61.80 SOF2	09/10	PAUL BRNA	1	BASE CAMP/0600	BASE CAMP/1800	
O-86 TFLD	09/12	NIC TURCO	1	BASE CAMP/0600	BASE CAMP/1800	
C-9 CRW2 IRON MOUNTAIN FF	09/10	VICTOR CISNEROS	20	BASE CAMP/0600	BASE CAMP/1800	
C-10 CRW2 CSR ENTERPR CRS3	09/10	JUBENCIO SALDANG	20	BASE CAMP/0600	BASE CAMP/1800	
C-25 CRW2 SZ FORESTRY FULLERTON CREW 1	09/15	RICHARD FULLERTON	20	BASE CAMP/0600	BASE CAMP/1800	
E-38 ENG4 AAA THUNDERBOLT FIRE SVC	09/16	JAMES GRANT	3	BASE CAMP/0600	BASE CAMP/1800	
E-77 ENG6 OREGON WOODS	09/11	RAVEN PARKINS	3	BASE CAMP/0600	BASE CAMP/1800	
E-80 ENG6 A1 FIRESTORM E5	09/11	DONALD LAFFERTY	2	BASE CAMP/0600	BASE CAMP/1800	
E-5 WTS2 45 CONTRACTING LLC	09/04	MIKE NAULT	1	BASE CAMP/0600	BASE CAMP/1800	
E-95 WTS2 VEGETATION SOLUTIONS	09/12	JOHN MCKENZIE	1	BASE CAMP/0600	BASE CAMP/1800	
E-113 WTS2 KING INC	09/15	DAVID SHEFFEL	1	BASE CAMP/0600	BASE CAMP/1800	
E-114 WTS2 SAULS MOBILE WASH	09/13	WAYNE SAUL	1	BASE CAMP/0600	BASE CAMP/1800	
E-17 DZR2 J & D LOGGING & CONTR **	09/05	JOHN SANOWSKI	2	BASE CAMP/0600	BASE CAMP/1800	
O-122 REAF	09/13	SUSAN THEIS	1	BASE CAMP/0600	BASE CAMP/1800	
O-175 REAF	09/20	JASON WRIGHT	1	BASE CAMP/0600	BASE CAMP/1800	
O-179 REAF	09/20	DANIELLE MCCAULEY	1	BASE CAMP/0600	BASE CAMP/1800	
<b>8. Division/Group Communication Summary</b>						
Function	Channel	RX Frequency N/W	RX Tone/NAC	TX Frequency N/W	TX Tone/NAC	Mode
COMMAND	1	170.4250	131.8	168.0750	131.8	A
COMMAND	2	170.4125	131.8	165.9625	131.8	A
TACTICAL	5	168.2000	131.8	168.2000	131.8	A
AIR TO GROUND	13	167.0750		167.0750		A
<b>9. Prepared By (Resource Unit Leader)</b>			<b>Approved By (Planning Section Chief)</b>		<b>Date</b>	<b>Time</b>
MARGE HUTCHINSON			JILL JOHNSON		09/07/2022	1348

**Division/Group Assignment List (ICS 204 WF)**  
**Controlled Unclassified Information//Basic**

<b>1. Incident Name:</b>			<b>3.</b>			
CROCKETS KNOB			<b>Branch:</b>		<b>Division/Group</b>	
<b>2. Operational Period:</b> DAY					E	
Date/Time From: 09/08/2022 0600 THU		Date/Time To: 09/08/2022 1800 THU				
<b>4. Operations Personnel</b>						
<b>OPERATIONS CHIEF</b>		TONY ENGEL JEROMY WILSON (T) KURT RANTA; CODY ACORD (T)		<b>DIVISION/GROUP SUPERVISOR</b>		JON STONELAKE ANDREW STINCHFIELD (T)
<b>SAFETY OFFICER</b>		TROY CORN; JACK CATES		<b>AIR OPERATIONS BRANCH DIRECTOR</b>		PAUL BALFOUR
<b>5. Resources Assigned this Period</b>						
Strike Team / Task Force / Resource Designator		LWD	Leader	Number Persons	Drop Off PT./Time	Pick Up PT./Time
O-181 REAF		09/20	ERIC MERTEN	1	BASE CAMP/0600	BASE CAMP/1800
O-7 EMT		09/13	DANIEL SOLOMON	1	BASE CAMP/0600	BASE CAMP/1800
O-93 EMPF MEDIC 2 FRONT LINE EMS		09/10	ASHLEY CARTER	1	BASE CAMP/0600	BASE CAMP/1800
O-94 EMPF MEDIC 1 ADVENTURE MEDICS		09/10	CHRISTIAN MILLER	1	BASE CAMP/0600	BASE CAMP/1800
E-87 REMS BLACKWOODS EMERG SVC		09/13	NICK BRUCKNER	4	BASE CAMP/0600	BASE CAMP/1800
<b>6. Control Operations/Work Assignments:</b>						
<p>TASK: Patrol and mop-up Road 45 and the spots over Road 45. Back-haul excess equipment.  PURPOSE: Prevent fire growth that impacts cultural and natural resources, remaining timber stands within the Summit Fire scar, and the Indian Rock Lookout  END STATE: Fire is contained east of Road 45.</p>						
<b>7. Special Instructions:</b>						
Engines and tenders may NOT draft directly from natural water sources, such as creeks. Drafting will occur only from Fold-a-tanks.						
All resources check-in with DIVS when entering and leaving division.						
<b>8. Division/Group Communication Summary</b>						
Function	Channel	RX Frequency N/W	RX Tone/NAC	TX Frequency N/W	TX Tone/NAC	Mode
COMMAND	1	170.4250	131.8	168.0750	131.8	A
COMMAND	2	170.4125	131.8	165.9625	131.8	A
TACTICAL	5	168.2000	131.8	168.2000	131.8	A
AIR TO GROUND	13	167.0750		167.0750		A
<b>9. Prepared By (Resource Unit Leader)</b>			<b>Approved By (Planning Section Chief)</b>		<b>Date</b>	<b>Time</b>
MARGE HUTCHINSON			JILL JOHNSON		09/07/2022	1348



**Division/Group Assignment List (ICS 204 WF)**  
**Controlled Unclassified Information//Basic**

<b>1. Incident Name:</b>				<b>3.</b>		
CROCKETS KNOB				<b>Branch:</b>	<b>Division/Group</b>	
<b>2. Operational Period: DAY</b>						
Date/Time From: 09/08/2022 0600 THU		Date/Time To: 09/08/2022 1800 THU		<b>G</b>		
<b>4. Operations Personnel</b>						
<b>OPERATIONS CHIEF</b>		TONY ENGEL JEROMY WILSON (T) KURT RANTA; CODY ACORD (T)		<b>DIVISION/GROUP SUPERVISOR</b> DJ GOLDSMITH		
<b>SAFETY OFFICER</b>		TROY CORN; JACK CATES		<b>AIR OPERATIONS BRANCH DIRECTOR</b> PAUL BALFOUR		
<b>5. Resources Assigned this Period</b>						
Strike Team / Task Force / Resource Designator		LWD	Leader	Number Persons	Drop Off PT./Time	Pick Up PT./Time
O-61.80 SOF2		09/10	PAUL BRNA	1	BASE CAMP/0600	BASE CAMP/1800
O-84 TFLD		09/11	SCOTT BENINATI	1	BASE CAMP/0600	BASE CAMP/1800
O-80 TFLD (T)		09/09	WHITNEY VANDEWIELE	1	BASE CAMP/0600	BASE CAMP/1800
O-54 HEQB		09/12	JAMES MAYOR	1	BASE CAMP/0600	BASE CAMP/1800
O-156 HEQB		09/14	JAMES GOELLER	1	BASE CAMP/0600	BASE CAMP/1800
O-157 HEQB		09/15	MATTHEW JONES	1	BASE CAMP/0600	BASE CAMP/1800
O-158 HEQB(T)		09/14	TYLER TOMLINSON	1	BASE CAMP/0600	BASE CAMP/1800
O-128 FMOD SWEDBERG CONTRACTING		09/12	TIMOTHY WAGNER	2	BASE CAMP/0600	BASE CAMP/1800
O-176 FMOD		09/18	GLEN DOBSON	2	BASE CAMP/0600	BASE CAMP/1800
E-81 ENG6 TIMBER BASIN		09/12	SCOTT FARMER	3	BASE CAMP/0600	BASE CAMP/1800
E-144 ENG6 ENG 32 DARE ENTERPRISES		09/18	COOPER BERRY	3	BASE CAMP/0600	BASE CAMP/1800
E-45 WTS2 LEONARD OSBURN		09/18	ALAN EWING	1	BASE CAMP/0600	BASE CAMP/1800
E-6 WTT2 STORM CARPENTER		09/18	CUB CARPENTER	2	BASE CAMP/0600	BASE CAMP/1800
E-99 SMM3 JLC CONTRACTING 333G		09/13	BRYAN STAHANCYK	2	BASE CAMP/0600	BASE CAMP/1800
E-32 MBM2 BRUCE YOUNG LOGGING		09/07	CALEB JOHNSON	2	BASE CAMP/0600	BASE CAMP/1800
<b>8. Division/Group Communication Summary</b>						
Function	Channel	RX Frequency N/W	RX Tone/NAC	TX Frequency N/W	TX Tone/NAC	Mode
COMMAND	1	170.4250	131.8	168.0750	131.8	A
COMMAND	2	170.4125	131.8	165.9625	131.8	A
COMMAND	3	171.5375	131.8	166.3625	131.8	A
TACTICAL	7	166.7250	131.8	166.7250	131.8	A
AIR TO GROUND	13	167.0750		167.0750		A
<b>9. Prepared By (Resource Unit Leader)</b>			<b>Approved By (Planning Section Chief)</b>		<b>Date</b>	<b>Time</b>
MARGE HUTCHINSON			JILL JOHNSON		09/07/2022	1348

**Division/Group Assignment List (ICS 204 WF)**  
**Controlled Unclassified Information//Basic**

<b>1. Incident Name:</b>				<b>3.</b>		
CROCKETS KNOB				<b>Branch:</b>	<b>Division/Group</b>  G	
<b>2. Operational Period: DAY</b>						
Date/Time From: 09/08/2022 0600 THU		Date/Time To: 09/08/2022 1800 THU				
<b>4. Operations Personnel</b>						
<b>OPERATIONS CHIEF</b>		TONY ENGEL JEROMY WILSON (T) KURT RANTA; CODY ACORD (T)		<b>DIVISION/GROUP SUPERVISOR</b>		DJ GOLDSMITH
<b>SAFETY OFFICER</b>		TROY CORN; JACK CATES		<b>AIR OPERATIONS BRANCH DIRECTOR</b>		PAUL BALFOUR
<b>5. Resources Assigned this Period</b>						
Strike Team / Task Force / Resource Designator		LWD	Leader	Number Persons	Drop Off PT./Time	Pick Up PT./Time
E-115 MBM1 BOULDER RIDGE CONSTRUCTION		09/14	GARRY ALLEN	2	BASE CAMP/0600	BASE CAMP/1800
E-11 VUTV		09/06	UNSTAFFED		BASE CAMP/0600	BASE CAMP/1800
<b>6. Control Operations/Work Assignments:</b>						
<p>TASK: Continue road prep along the Road 45 to the Sharpe Ridge Trailhead.  PURPOSE: To establish secondary line of defense that would prevent impact to values if current primary lines are compromised.  END STATE: Fire is contained east of Road 45 and identified values west of Road 10 are assessed and protected.</p>						
<b>7. Special Instructions:</b>						
All resources check-in with DIVS when entering and leaving division.						
<b>8. Division/Group Communication Summary</b>						
Function	Channel	RX Frequency N/W	RX Tone/NAC	TX Frequency N/W	TX Tone/NAC	Mode
COMMAND	1	170.4250	131.8	168.0750	131.8	A
COMMAND	2	170.4125	131.8	165.9625	131.8	A
COMMAND	3	171.5375	131.8	166.3625	131.8	A
TACTICAL	7	166.7250	131.8	166.7250	131.8	A
AIR TO GROUND	13	167.0750		167.0750		A
<b>9. Prepared By (Resource Unit Leader)</b>			<b>Approved By (Planning Section Chief)</b>		<b>Date</b>	<b>Time</b>
MARGE HUTCHINSON			JILL JOHNSON		09/07/2022	1348

**Division/Group Assignment List (ICS 204 WF)**  
**Controlled Unclassified Information//Basic**

<b>1. Incident Name:</b>				<b>3.</b>		
CROCKETS KNOB				<b>Branch:</b>	<b>Division/Group</b>	
<b>2. Operational Period: DAY</b>						
Date/Time From: 09/08/2022 0600 THU		Date/Time To: 09/08/2022 1800 THU		<b>M</b>		
<b>4. Operations Personnel</b>						
<b>OPERATIONS CHIEF</b>		TONY ENGEL JEROMY WILSON (T) KURT RANTA; CODY ACORD (T)		<b>DIVISION/GROUP SUPERVISOR</b> BRAD BRYANT		
<b>SAFETY OFFICER</b>		TROY CORN; JACK CATES		<b>AIR OPERATIONS BRANCH DIRECTOR</b> PAUL BALFOUR		
<b>5. Resources Assigned this Period</b>						
Strike Team / Task Force / Resource Designator		LWD	Leader	Number Persons	Drop Off PT./Time	Pick Up PT./Time
O-99 SOFR		09/19	JEROME DRAZINSKI	1	BASE CAMP/0600	BASE CAMP/1800
O-155 TFLD		09/15	TIM SCOTT	1	BASE CAMP/0600	BASE CAMP/1800
C-7 CRW1 EL CARISO IHC		09/09	CHARLES KOTT	22	GRAVEL PIT SPIKE/0600	GRAVEL PIT SPIKE/1800
C-8 CRW1 INYO IHC		09/08	JOEL SCHILLING	21	GRAVEL PIT SPIKE/0600	GRAVEL PIT SPIKE/1800
C-16 CRW1 PIKE IHC		09/10	DAVID SMALLMAN	22	GRAVEL PIT SPIKE/0600	GRAVEL PIT SPIKE/1800
C-4 CR2I GRAYBACK FORESTRY 13A		09/15	CHARLES COFMAN	20	BASE CAMP/0600	BASE CAMP/1800
C-27 CR2I WARM SPRINGS IHC #2 **		09/18	RACIN JOHNSON	19	BASE CAMP/0600	BASE CAMP/1800
C-28 CR2I GRAYBACK FORESTRY NCC 17B		09/18	GAVIN SAEMAN	20	GRAVEL PIT SPIKE/0600	GRAVEL PIT SPIKE/1800
E-79 ENG6 HI COUNTRY LLC		09/11	JOHN CONGER	3	BASE CAMP/0600	BASE CAMP/1800
E-92 WTT2 JWS WILDFIRE		09/13	JOHN MCNEELY	1	BASE CAMP/0600	BASE CAMP/1800
E-94 WTT2 GRAYBACK FORESTRY		09/12	CLIFFORD TEVEBAUGH	1	BASE CAMP/0600	BASE CAMP/1800
O-143 FOBS		09/15	JOHN J QUINTANA	1	BASE CAMP/0600	BASE CAMP /1800
O-144 FOBS		09/15	DAVID A REYNOLDS	1	BASE CAMP/0600	BASE CAMP/1800
O-145 FOBS (T)		09/15	BRADLEY WALKER	1	BASE CAMP/0600	BASE CAMP/1800
E-14 UTV			UNSTAFFED		BASE CAMP/0600	BASE CAMP/1800
<b>8. Division/Group Communication Summary</b>						
Function	Channel	RX Frequency N/W	RX Tone/NAC	TX Frequency N/W	TX Tone/NAC	Mode
COMMAND	1	170.4250	131.8	168.0750	131.8	A
COMMAND	2	170.4125	131.8	165.9625	131.8	A
COMMAND	3	171.5375	131.8	166.3625	131.8	A
TACTICAL	6	168.6000	131.8	168.6000	131.8	A
AIR TO GROUND	13	167.0750		167.0750		A
<b>9. Prepared By (Resource Unit Leader)</b>			<b>Approved By (Planning Section Chief)</b>		<b>Date</b>	<b>Time</b>
MARGE HUTCHINSON			JILL JOHNSON		09/07/2022	1348

## Division/Group Assignment List (ICS 204 WF)

Controlled Unclassified Information//Basic

<b>1. Incident Name:</b>				<b>3.</b>			
CROCKETS KNOB				<b>Branch:</b>		<b>Division/Group</b>	
<b>2. Operational Period: DAY</b>							
Date/Time From: 09/08/2022 0600		THU		Date/Time To: 09/08/2022 1800		THU	
<b>4. Operations Personnel</b>							
<b>OPERATIONS CHIEF</b>		TONY ENGEL JEROMY WILSON (T) KURT RANTA; CODY ACORD (T)			<b>DIVISION/GROUP SUPERVISOR</b>		BRAD BRYANT
<b>SAFETY OFFICER</b>		TROY CORN; JACK CATES			<b>AIR OPERATIONS BRANCH DIRECTOR</b>		PAUL BALFOUR
<b>6. Control Operations/Work Assignments:</b>							
<p>TASK: Continue securing fire edge east and south of Indian Rock Lookout. Backhaul excess equipment.</p> <p>PURPOSE: Prevent long duration fire growth that impacts cultural and natural resource values, recreation sites, private property and Indian Rock Lookout.</p> <p>END STATE: Fire is contained north and west of Vinegar Hill Scenic area boundary and Road 020.</p>							
<b>7. Special Instructions:</b>							
<p>Notify Operations of fire growth across the Princess Trail.</p> <p>All resources check-in with DIVS when entering and leaving division.</p>							
<b>8. Division/Group Communication Summary</b>							
Function	Channel	RX Frequency N/W	RX Tone/NAC	TX Frequency N/W	TX Tone/NAC	Mode	
COMMAND	1	170.4250	131.8	168.0750	131.8	A	
COMMAND	2	170.4125	131.8	165.9625	131.8	A	
COMMAND	3	171.5375	131.8	166.3625	131.8	A	
TACTICAL	6	168.6000	131.8	168.6000	131.8	A	
AIR TO GROUND	13	167.0750		167.0750		A	
<b>9. Prepared By (Resource Unit Leader)</b>			<b>Approved By (Planning Section Chief)</b>			<b>Date</b>	<b>Time</b>
MARGE HUTCHINSON			JILL JOHNSON			09/07/2022	1348

**Division/Group Assignment List (ICS 204 WF)**  
**Controlled Unclassified Information//Basic**

<b>1. Incident Name:</b>			<b>3.</b>			
CROCKETS KNOB			<b>Branch:</b>		<b>Division/Group</b>	
<b>2. Operational Period:</b> DAY			<b>S / Z</b>			
Date/Time From: 09/08/2022 0600 THU	Date/Time To: 09/08/2022 1800 THU					
<b>4. Operations Personnel</b>						
<b>OPERATIONS CHIEF</b>		TONY ENGEL JEROMY WILSON (T) KURT RANTA; CODY ACORD (T)		<b>DIVISION/GROUP SUPERVISOR</b>		LARRY LEACH
<b>SAFETY OFFICER</b>		TROY CORN; JACK CATES		<b>AIR OPERATIONS BRANCH DIRECTOR</b>		PAUL BALFOUR
<b>5. Resources Assigned this Period</b>						
Strike Team / Task Force / Resource Designator	LWD	Leader	Number Persons	Drop Off PT./Time	Pick Up PT./Time	
O-98 SOFR	09/12	CHRIS O'BRIEN	1	BASE CAMP/0600	BASE CAMP/1800	
O-9 REMS SPFN 9	09/13	MATTHEW TURNER	4	BASE CAMP/0600	BASE CAMP/1800	
E-51 AMBU 2	09/12	JERRY SINICA	2	BASE CAMP/0600	BASE CAMP/1800	
<b>6. Control Operations/Work Assignments:</b>						
<p>TASK: Monitor and patrol dozer line, Road 436 and Big Boulder Trail. Monitor uncontained fire edge in head of Boulder Creek. Complete chipping on Road 4550 and Road 436. Backhaul excess equipment.</p> <p>PURPOSE: Prevent additional fire spread into Badger Creek that may have future impact to private property, cultural, natural and timber values.</p> <p>END STATE: Fire is contained east of Road 4550 and north of Badger Creek</p>						
<b>7. Special Instructions:</b>						
Engines and tenders may NOT draft directly from natural water sources, such as creeks. Drafting will occur only from Fold-a-tanks.						
All resources check-in with DIVS when entering and leaving division.						
<b>8. Division/Group Communication Summary</b>						
Function	Channel	RX Frequency N/W	RX Tone/NAC	TX Frequency N/W	TX Tone/NAC	Mode
COMMAND	1	170.4250	131.8	168.0750	131.8	A
COMMAND	2	170.4125	131.8	165.9625	131.8	A
TACTICAL	8	166.7750	131.8	166.7750	131.8	A
AIR TO GROUND	13	167.0750		167.0750		A
<b>9. Prepared By (Resource Unit Leader)</b>			<b>Approved By (Planning Section Chief)</b>		<b>Date</b>	<b>Time</b>
MARGE HUTCHINSON			JILL JOHNSON		09/07/2022	1348



**Division/Group Assignment List (ICS 204 WF)**  
**Controlled Unclassified Information//Basic**

<b>1. Incident Name:</b>			<b>3.</b>			
CROCKETS KNOB			<b>Branch:</b>		<b>Division/Group</b>	
<b>2. Operational Period:</b> DAY			<b>CONTINGENCY</b>			
Date/Time From: 09/08/2022 0600 THU		Date/Time To: 09/08/2022 1800 THU				
<b>4. Operations Personnel</b>						
<b>OPERATIONS CHIEF</b>		TONY ENGEL JEROMY WILSON (T) KURT RANTA; CODY ACORD (T)		<b>DIVISION/GROUP SUPERVISOR</b>		EZRA BUTTERFIELD
<b>SAFETY OFFICER</b>		TROY CORN; JACK CATES		<b>AIR OPERATIONS BRANCH DIRECTOR</b>		PAUL BALFOUR
<b>5. Resources Assigned this Period</b>						
Strike Team / Task Force / Resource Designator		LWD	Leader	Number Persons	Drop Off PT./Time	Pick Up PT./Time
O-11 TFLD		09/09	JOSHUAH WINKLER	1	BASE CAMP/0600	BASE CAMP/1800
O-130 TFLD (T)		09/11	TIMOTHY WAGNER	1	BASE CAMP/0600	BASE CAMP/1800
O-177 FMOD SWEDBERG CONTRACTING		09/19	LOGAN WADLEY	2	BASE CAMP/0600	BASE CAMP/1800
C-19 CRW2 WILLAMETTE VLY REFOREST CR 3		09/12	LAZARO MONTANO	20	BASE CAMP/0600	BASE CAMP/1800
C-20 CRW2 TORRES CONTR CR6		09/11	MARCA MARTINEZ	20	BASE CAMP/0600	BASE CAMP/1800
E-78 ENG6 AQUAFORCE E204		09/11	TYLER GILMORE	3	BASE CAMP/0600	BASE CAMP/1800
E-7 DZR2 COUGAR RIDGE CONSTR D2		09/05	DAVE OAKS	2	BASE CAMP/0600	BASE CAMP/1800
E-34 MBM1 EAGLE CAP FORESTRY		09/10	BEN FISCHER	2	BASE CAMP/0600	BASE CAMP/1800
E-10 CHP2 HINER JR, THEODORE W		09/08	AUSTIN HUTTEMA	3	BASE CAMP/0600	BASE CAMP/1800
E-30 CHP2 GRAYBACK FORESTRY		09/08	JOSH MINER	3	BASE CAMP/0600	BASE CAMP/1800
E-96 CHP1 THE ROAD HOME		09/12	SAM BONADOR	3	BASE CAMP/0600	BASE CAMP/1800
E-97 CHP1 WYEAST FORESTRY MGMT		09/12	ERIC NELSON	3	BASE CAMP/0600	BASE CAMP/1800
E-13 VUTV KD OUTDOORS		09/06			BASE CAMP/0600	BASE CAMP/1800
O-95 EMPF MEDIC 3 ADVENTURE MEDICS		09/12	MICHAEL COOPER	1	BASE CAMP/0600	BASE CAMP/1800
<b>8. Division/Group Communication Summary</b>						
Function	Channel	RX Frequency N/W	RX Tone/NAC	TX Frequency N/W	TX Tone/NAC	Mode
COMMAND	1	170.4250	131.8	168.0750	131.8	A
COMMAND	2	170.4125	131.8	165.9625	131.8	A
TACTICAL	7	166.7250	131.8	166.7250	131.8	A
AIR TO GROUND	13	167.0750		167.0750		A
<b>9. Prepared By (Resource Unit Leader)</b>			<b>Approved By (Planning Section Chief)</b>		<b>Date</b>	<b>Time</b>
MARGE HUTCHINSON			JILL JOHNSON		09/07/2022	1348

**Division/Group Assignment List (ICS 204 WF)**  
**Controlled Unclassified Information//Basic**

<b>1. Incident Name:</b>			<b>3.</b>			
CROCKETS KNOB			<b>Branch:</b>		<b>Division/Group</b>	
<b>2. Operational Period:</b> DAY			<b>CONTINGENCY</b>			
Date/Time From: 09/08/2022 0600 THU		Date/Time To: 09/08/2022 1800 THU				
<b>4. Operations Personnel</b>						
<b>OPERATIONS CHIEF</b>		TONY ENGEL JEROMY WILSON (T) KURT RANTA; CODY ACORD (T)		<b>DIVISION/GROUP SUPERVISOR</b>		EZRA BUTTERFIELD
<b>SAFETY OFFICER</b>		TROY CORN; JACK CATES		<b>AIR OPERATIONS BRANCH DIRECTOR</b>		PAUL BALFOUR
<b>5. Resources Assigned this Period</b>						
Strike Team / Task Force / Resource Designator		LWD	Leader	Number Persons	Drop Off PT./Time	Pick Up PT./Time
<b>6. Control Operations/Work Assignments:</b>						
<p>TASK: Prep Road 4560 system as a contingency line west of main fire.          PURPOSE: To establish secondary lines of defense that would prevent impact to values if current primary lines are compromised.          END STATE: Contingency lines identified and established if needed outside of primary containment lines.</p>						
<b>7. Special Instructions:</b>						
<p>Engines and tenders may NOT draft directly from natural water sources, such as creeks. Drafting will occur only from fold-a-tanks.</p> <p>** Resource will be used for IA as directed:</p> <ul style="list-style-type: none"> <li>· If Initial Attack occurs within the TFR, John Day Dispatch will coordinate with appropriate duty officer and contact Field Ops for response.</li> <li>· Field Operations will contact IA Group Supervisor and or Air Operations to coordinate response to new start.</li> <li>· Local forest Initial Attack frequencies will be used and provided in the IAP Communications Plan</li> <li>· The same process will be used for fires outside of TFR if assistance from Crockets Knob fire resources is requested.</li> </ul>						
<b>8. Division/Group Communication Summary</b>						
Function	Channel	RX Frequency N/W	RX Tone/NAC	TX Frequency N/W	TX Tone/NAC	Mode
COMMAND	1	170.4250	131.8	168.0750	131.8	A
COMMAND	2	170.4125	131.8	165.9625	131.8	A
TACTICAL	7	166.7250	131.8	166.7250	131.8	A
AIR TO GROUND	13	167.0750		167.0750		A
<b>9. Prepared By (Resource Unit Leader)</b>			<b>Approved By (Planning Section Chief)</b>		<b>Date</b>	<b>Time</b>
MARGE HUTCHINSON			JILL JOHNSON		09/07/2022	1348

**Division/Group Assignment List (ICS 204 WF)**  
**Controlled Unclassified Information//Basic**

<b>1. Incident Name:</b>				<b>3.</b>		
CROCKETS KNOB				<b>Branch:</b>	<b>Division/Group</b>	
<b>2. Operational Period: DAY</b>						
Date/Time From: 09/08/2022 0600 THU		Date/Time To: 09/08/2022 1800 THU		<b>STRUCTURE / IA</b>		
<b>4. Operations Personnel</b>						
<b>OPERATIONS CHIEF</b>		TONY ENGEL JEREMY WILSON (T) KURT RANTA; CODY ACORD (T)		<b>DIVISION/GROUP SUPERVISOR</b>		JIM WALKOWSKI
<b>SAFETY OFFICER</b>		TROY CORN; JACK CATES		<b>AIR OPERATIONS BRANCH DIRECTOR</b>		PAUL BALFOUR
<b>5. Resources Assigned this Period</b>						
Strike Team / Task Force / Resource Designator		LWD	Leader	Number Persons	Drop Off PT./Time	Pick Up PT./Time
E-2 ENG4 GRAYBACK FORESTRY		09/18	JOHN RAY	3	BASE CAMP /0600	BASE CAMP/1800
E-35 ENG6 STRIKE BACK		09/08	JOE PICKET	2	BASE CAMP /0600	BASE CAMP/1800
E-37 ENG4 AAA THUNDERBOLT FIRE SVC		09/08	ROBERT STEWART	3	BASE CAMP /0600	BASE CAMP/1800
E-112 ENG ODF E-9262		09/13	AARON KIDWELL	2	BASE CAMP /0600	BASE CAMP/1800
E-135 ENG6 A1 FIRESTORM #06		09/21	NOAH LAFFERTY	3	BASE CAMP /0600	BASE CAMP/1800
E-136 ENG4 A A A THUNDERBOLT FIRE SERVICE		09/21	MONTIE REYNOLDS	3	BASE CAMP /0600	BASE CAMP/1800
E-137 ENG5 BLACKSTONE FORESTRY		09/19	CODY SUTTON	3	BASE CAMP /0600	BASE CAMP/1800
E-138 ENG6 GE FORESTRY		09/21	MINGUEL DURAN	3	BASE CAMP /0600	BASE CAMP/1800
E-139 ENG6 A A A THUNDERBOLT FIRE SERVICE		09/21	LOGAN CATES	3	BASE CAMP /0600	BASE CAMP/1800
E-91 WTT2 TRI-CO INC TENDER		09/13	DALE HUGHES	1	BASE CAMP /0600	BASE CAMP/1800
E-119 VUTV			UNSTAFFED		BASE CAMP /0600	BASE CAMP/1800
<b>6. Control Operations/Work Assignments:</b>						
<b>Structure Group:</b>						
TASK: Finalize structure plan for south of fire. Continue coordination with OSFM liaison and ODF to determine structure defense resources available. Continue to develop point protection plan for Desolation creek area, Olive Lake and Duprat Cabins.						
PURPOSE: To prepare structures and private property values along the Highway 20 and Road 10 corridors and in the vicinity of the fire for impact from fire.						
END STATE: Structures and private property along the Highway 20 and Road 10 corridors and in the vicinity of the fire are assessed and defensible. Suppression activities to prevent fire impact to private property has						
<b>8. Division/Group Communication Summary</b>						
Function	Channel	RX Frequency N/W	RX Tone/NAC	TX Frequency N/W	TX Tone/NAC	Mode
COMMAND	1	170.4250	131.8	168.0750	131.8	A
COMMAND	2	170.4125	131.8	165.9625	131.8	A
TACTICAL	9	168.2500	131.8	168.2500	131.8	A
TACTICAL	11	168.3125	131.8	168.3125	131.8	A
AIR TO GROUND	12	167.3750		167.3750		A
AIR TO GROUND	13	167.0750		167.0750		A
<b>9. Prepared By (Resource Unit Leader)</b>			<b>Approved By (Planning Section Chief)</b>		<b>Date</b>	<b>Time</b>
MARGE HUTCHINSON			JILL JOHNSON		09/07/2022	1348

## Division/Group Assignment List (ICS 204 WF)

Controlled Unclassified Information//Basic

<b>1. Incident Name:</b>				<b>3.</b>			
CROCKETS KNOB				<b>Branch:</b>		<b>Division/Group</b>	
<b>2. Operational Period: DAY</b>							
Date/Time From: 09/08/2022 0600		Date/Time To: 09/08/2022 1800		<b>STRUCTURE / IA</b>			
THU		THU					
<b>4. Operations Personnel</b>							
<b>OPERATIONS CHIEF</b>		TONY ENGEL JEROMY WILSON KURT RANTA; CODY ACORD (T)		<b>DIVISION/GROUP SUPERVISOR</b>		JIM WALKOWSKI	
<b>SAFETY OFFICER</b>		TROY CORN; JACK CATES		<b>AIR OPERATIONS BRANCH DIRECTOR</b>		PAUL BALFOUR	
<b>6. Control Operations/Work Assignments:</b>							
occurred.							
<b>IA Group:</b>							
TASK: Follow IA response plan to provide IA response with identified resources for new fire starts within TFR							
PURPOSE: To support initial attack response capability for the Malheur and Umatilla NFs.							
END STATE: Prompt and efficient mobilization of identified IA resources to new fire starts.							
<b>7. Special Instructions:</b>							
<ul style="list-style-type: none"> <li>· If Initial Attack occurs within the TFR, John Day Dispatch will coordinate with appropriate duty officer and contact Field Ops for response.</li> <li>· Field Operations will contact IA Group Supervisor and or Air Operations to coordinate response to new start.</li> <li>· Local forest Initial Attack frequencies will be used and provided in the IAP Communications Plan</li> <li>· The same process will be used for fires outside of TFR if assistance from Crockets Knob fire resources is requested.</li> </ul>							
Engines and tenders may NOT draft directly from natural water sources, such as creeks. Drafting will occur only from Fold-a-tanks.							
<b>8. Division/Group Communication Summary</b>							
Function	Channel	RX Frequency N/W	RX Tone/NAC	TX Frequency N/W	TX Tone/NAC	Mode	
COMMAND	1	170.4250	131.8	168.0750	131.8	A	
COMMAND	2	170.4125	131.8	165.9625	131.8	A	
TACTICAL	9	168.2500	131.8	168.2500	131.8	A	
TACTICAL	11	168.3125	131.8	168.3125	131.8	A	
AIR TO GROUND	12	167.3750		167.3750		A	
AIR TO GROUND	13	167.0750		167.0750		A	
<b>9. Prepared By (Resource Unit Leader)</b>			<b>Approved By (Planning Section Chief)</b>			<b>Date</b>	<b>Time</b>
MARGE HUTCHINSON			JILL JOHNSON			09/07/2022	1348

**AIR OPERATIONS SUMMARY**

**PREPARED BY: Paul Balfour**

**PREPARED DATE/TIME: September 7, 1800hrs**

<b>INCIDENT NAME</b> Crockets Knob	<b>2. OPERATIONAL PERIOD:</b> Date: 9/8/2022      Helibase Start Time: 0800 End Time: 2000      Sunrise: 0625 Sunset: 1921 (Times valid for John Day PDT)
---------------------------------------	---

<p><b>3. REMARKS (Safety Notes, Hazards, Air Operations Special Equipment, etc.):</b> General Aviation, See &amp; Avoid YOU will be working in a complex fire environment, ensure YOU understand the Fire Traffic Area (FTA) Protocols. (12nm initial call, 7nm contact must be made prior to entering FTA)</p> <p>Bucket work, Retardant drops: ensure area is clear of ground personnel before dropping; watch for wires; be aware of potential for turbulence at ridge tops, saddles, canyons, etc *** BE AWARE OF FATIGUE, TAKE LONGER BREAKS WHEN FLYING IN SMOKEY CONDITIONS. *** Report all TFR intrusions to Air Operations, Air Support or Helibase as soon as possible.</p>	<p><b>4. MEDEVAC A/C:</b> Order thru ATGS or JDIDC <b>EMS Rotor A/G:</b> VMED29 155.3475 Tx/Rx, Tone 156.7 Tx/Rx 38HX COMM: A/A Primary A/G Primary</p>	<p><b>5. TFR #2/8108 &amp; 2/8109</b> Surface to 11,000' MSL 7NM Radius</p>
---	---	---

6. PERSONNEL	LWD	Phone	7. FREQUENCIES			8. FIXED-WING	# Avail / Type/ Make-Model / FAA N# / Base(s)
			AM	FM			
AOBD: Paul Balfour O-61.43		509-993-8739	AIR/AIR Primary	123.6250 (A8)		Fixed Wing/Buckets	DIVS order thru ATGS if up, or Communications
ASGS: Tim Lyda O- 61.44      9/8		541-761-2676	AIR/AIR Secondary	128.2250 (A39)			
HEBM: Tyler Davis (T) 9/7		360-220-5359	AIR/GRD Primary		167.0750 (A11)	ATGS Aircraft	(A-2) N3NT AC690D Jeremy Cowie or Relief Rob Rosetti  LATs Order through Air Attack/AOBD Or JDIDC
HEMG:			AIR/GRD Secondary		169.7125 (A41)		
ATGS: Jeremy Cowie		406-241-2572	AIR/GRD IA Primary		167.3750		
ATGS:			AIR/GRD IA Secondary		168.6375		
JDIDC:		541-575-3110	UNICOM	122.800		NOTES:	Grant Co Regional Airport, Haley Walker 541-575-1151 or 530-567-5987  email cost: <a href="mailto:jdairbase@gmail.com">jdairbase@gmail.com</a>
			DECK	163.1000			

**9. HELICOPTERS**

FAA N#	TY	MAKE/MODEL	BASE	START	AVAIL	REMARKS	FAA N#	TY	MAKE/MODEL	BASE	START	AVAIL	REMARKS
519FF	3	A Star B3	John Day	0800	0830	A-13, Helitack ,Medivac Buckets	462WY	1	CH-46	John Day	0800	0830	A-7 Bucket
38HX	3	AS-350 A Star	Baker	0800	0830	A-63 Short Haul/Buckets	448JS	1	S-61	John Day	0800	0830	A-22 Bucket
17HX	2	Bell 205++	John Day	0800	0830	A-102 Buckets/Helitack Crew 10 personnel	83BH	1	UH-60	John Day	0800	0830	Bucket A-29



# INCIDENT RADIO COMMUNICATIONS PLAN (ICS 205)

Controlled Unclassified Information//Basic

<b>1. Incident Name:</b>	<b>2. Date/Time Prepared:</b>	<b>3. Operational Period: DAY</b>	
CROCKETS KNOB	Date: 09/07/2022 Time: 1348	Date/Time From: 09/08/2022 0600 THU	Date/Time To: 09/08/2022 1800 THU

**4. Basic Radio Channel Use:**

Zone Group	Ch #	Function	Channel Name/Trunked Radio System Talkgroup	Assignment	RX Freq	RX Tone/NAC	TX Freq	TX Tone/NAC	Mode (A,D, or M)	Remarks
	1	COMMAND	CMD 1	ALL DIVS	170.4250	131.8	168.0750	131.8	A	NORTH - INDIAN ROCK LO
	2	COMMAND	CMD 2	ALL DIVS	170.4125	131.8	165.9625	131.8	A	SOUTH - DIXIE BUTTE LO
	3	COMMAND	CMD 3	DIV G / M	171.5375	131.8	166.3625	131.8	A	N DESOLUTION BUTTE LO
	4	TACTICAL	TAC 4	DIV A	168.0500	131.8	168.0500	131.8	A	
	5	TACTICAL	TAC 5	DIV E	168.2000	131.8	168.2000	131.8	A	
	6	TACTICAL	TAC 6	DIV M	168.6000	131.8	168.6000	131.8	A	
	7	TACTICAL	TAC 7	DIV G / CONTING	166.7250	131.8	166.7250	131.8	A	DIVISION G / CONTINGENCY
	8	TACTICAL	TAC 8	DIV S / Z	166.7750	131.8	166.7750	131.8	A	DIVISION S / Z
	9	TACTICAL	TAC 9	STRUCTURE / IA	168.2500	131.8	168.2500	131.8	A	STRUCTURE / IA
	10	COMMAND	N DIXIE	ALL DIVS	172.4000	131.8	166.2000	123.0	A	IA / BACKUP IF CMD NET INOP
	11	TACTICAL	MAF TAC	IA	168.3125	131.8	168.3125	131.8	A	IA ONLY
	12	AIR TO GROUND	A/G 38	MALHEUR	167.3750		167.3750		A	A/G FOR MALHEUR N.F.
	13	AIR TO GROUND	A/G PRI	ALL DIVS	167.0750		167.0750		A	AIR OPS ONLY
	15	AIR TO GROUND	VMED 29	ALL DIVS	155.3475	156.7	155.3475	156.7	A	MEDICAL EVAC ONLY
	14	AIR TO GROUND	A/G SEC	ALL DIVS	169.7125		169.7125		A	AIR OPS ONLY
	16	AIR GUARD	AIRGUARD	ALL DIVS	168.6250		168.6250	110.9	A	EMERGENCY AIR OPS ONLY

**5. Special Instructions:** COMMUNICATIONS (208) 891-8093

<b>6. Prepared By</b> (Communications Unit Leader)	Name: MISSY PARKER	Signature: <i>Missy Parker</i>
ICS 205	IAP Page	Date/Time: 09/07/2022 1348

Controlled Unclassified Information//Basic

## CROCKETS KNOB—Repair

### KEY FEATURES TO REPAIR:

Any damage that was due to suppression efforts. No damage that the fire itself caused.

- Dozer Lines
- Hand lines
- Staging areas
- High traffic areas
- Cut Fences
- Pump/Draft Sites
- Smashed culverts
- Damaged Roads
- Damaged Facilities
- Damaged habitat
- Damaged Streams
- Many more



### Steps:

1. Resource advisors will collect the locations of all suppression features in the program called "Field Maps." (There are many much appreciated suppression folks doing this as well)
2. Resource Advisors will determine if and how each feature needs repaired in Field Maps
3. A Suppression Repair Plan is approved.
4. Resource Advisors will approve that a feature has Arch Clearance before repair and will document in Field Maps
5. Suppression resources will notify Resource Advisors of features that are no longer needed for containment
6. Other Containment Repair features will be repaired later. Maybe even the next spring.
7. Equipment comes in and heavy equipment bosses work with resource advisors to ensure all repair is done to specs.

## THREE DAY DEMOB LIST

Thursday 9-8-22

### CREWS

C-6	0600	(CR2I)	NW - OR-MAF #4 (PCRD)
C-18	0630	(CR2I)	VALE BLM SRV #12
C-27.18	0700	(FFT2)	MILLER, DAPRI
C-27.19	0700	(FFT2)	SCOTT, DARIAN

### EQUIPMENT

E-19	0700	(POT2)	KC NELSON CONTRACTING, LLC
E-20	0715	(GWT3)	L & C COMPANY, LLC VIPER
E-11	0800	(VUTV)	KD OUTDOORS
E-13	0800	(VUTV)	KD OUTDOORS
E-12	0830	(VUTV)	KD OUTDOORS VIN:
E-14	0830	(VUTV)	KD OUTDOORS LLC
E-46	0900	(WTS2)	OVERPECK LOGGING, LLC
E-93	0930	(WTT2)	STORM C CARPENTER
E-26	1000	(HDD2)	CURTIS T. PUMPHREY
E-62	1300	(FEL1)	J & D LOGGING & CONTR
E-98	1300	(DZR2)	PATTON CARTER D2

### OVERHEAD

O-30	1100	(EQTR)	MILLER, BRENN VALRIE
------	------	--------	----------------------

Friday 9-9-22

### CREWS

C-8	0600	(CRW1)	INYO IHC
-----	------	--------	----------

### EQUIPMENT

E-35	0615	(ENG6)	STRIKE BACK
E-37	0630	(ENG4)	AAA THUNDERBOLT FIRE SVC
E-10	0700	(CHP2)	HINER JR, THEODORE W
E-30	0730	(CHP2)	GRAYBACK FORESTRY

### OVERHEAD

O-61.44	0700	(ASGS)	LYDA, TIM
---------	------	--------	-----------

Saturday 9-10-22

### CREWS

C-7	0630	(CRW1)	EL CARISO IHC EQUIPMENT
-----	------	--------	-------------------------

### EQUIPMENT

E-35	0615	(ENG6)	STRIKE BACK
E-37	0630	(ENG4)	AAA THUNDERBOLT FIRE SVC
E-10	0700	(CHP2)	HINER JR, THEODORE W
E-30	0730	(CHP2)	GRAYBACK FORESTRY
E-39	0645	(ENG6)	BIGFOOT WILDFIRE
E-33	0715	(MBM1)	BRUCE YOUNG LOGGING, LLC

### OVERHEAD

O-49	0700	(PIOF)	ACOSTA, JOSE R
------	------	--------	----------------

### Croquets Knob Fire DEMOB Procedures

1. Complete CTRs and follow Finance IAP Message.
2. Return any checked-out equipment and/or radios.
3. All Contractors complete Ground Support inspection at Taylor Flats.
4. ALL VEHICLES OFF ROAD SHALL GO THROUGH THE WEED WASH LOCATED JUST WEST OF PRAIRIE CITY – FOLLOW SIGNAGE.
5. Contact DEMOB LAST at 509-432-6143 to finalize process.  
DEMOB Email: 2022.croquetsknob.demob@firenet.gov

NOTE: All air travelers need to contact DEMOB to make arrangements 72 hours prior to departure.



# **Crockets Knob Fire Information 541-625-0892**



[2022.crocketsknob@firenet.gov](mailto:2022.crocketsknob@firenet.gov)

<https://www.facebook.com/CrocketsKnobFire>

<https://inciweb.nwccg.gov/incident/8355/>

## **Talking Points**

- The Crockets Knob fire is being controlled using a Full Suppression Strategy with Public and Firefighter Safety and value protection as top priorities.
- Firefighters have been using mapping technology to accurately locate and identify structures, values, and hazards that may be impacted by the fire as well as landmarks that may be useful in fighting the fire.



# Human Resource Message



Contact:  
Susie Manezes (ICP), 602-571-9327 or [smanezes@blm.gov](mailto:smanezes@blm.gov) or  
Jon Tipton (Taylor Flats), 971-347-7314 or [jonathan.tipton@usda.gov](mailto:jonathan.tipton@usda.gov)

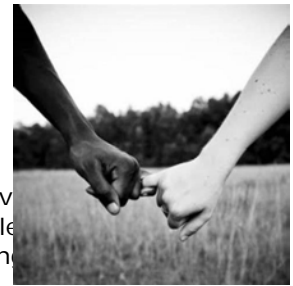
September 8, 2022

## Maintaining Relationships During Assignment

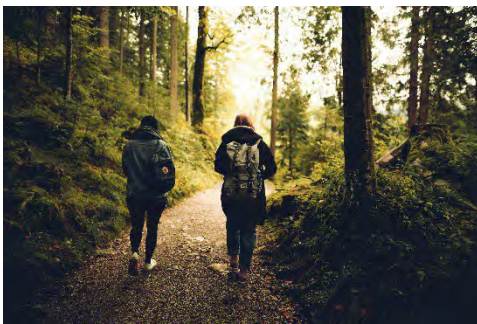
Relationships come in a variety of forms, but one consistent factor is the effort they require to maintain. Whether we are gone on endless fire assignments, or working long hours from our own home units, time spent focused on work takes away from fostering the important relationships in our lives. Be it a significant other, family members, kids, friends, or pets, we need to make time for them to cultivate longevity in the relationship. Some proactive steps taken before we hit PL3 or higher can help maintain long-term connection.

**Talk about how you will stay connected.** What does it look like when you come home from an assignment or have days off? Will that time be spent doing endless chores that are stacking up or will you allow yourself some grace from the to-do list and instead enjoy spending time with your loved ones? While the to-do list will always be there, make it a priority to engage in the activities that create and sustain connection.

**How will you stay in touch?** What is that communication plan and is it dependent on cell service? Cell service cannot always be guaranteed when on assignment so make sure your plan takes this into consideration. Even when there is cell coverage, you may be emotionally and physically drained and not have the capacity to engage in a conversation. Sleep is a priority over phone calls. Build a communication plan with loved ones based on understanding remote locations and long days.



**Share pictures.** Those at home can send a daily picture to keep you connected, it may not come through right away if you don't have cell coverage, but it will be a cherished surprise that awaits once you have service.



**Make sure to engage in your spouse's and children's interests when home.** Do you know what those are? If not, take some time to learn about their current interests and set aside time to make it all about them when you have time off at home.

**Make plans.** Make plans for when the season does ease up and we slow to PL2 or PL1. Some of us may be furloughed or reach the end of our seasonal employment. Who will you connect with during this time and what plans will you make with them? Plan a trip, go camping, take that hike you and your best friend talked about for the last two years. Making plans in the future keeps us engaged, it gives us something to look forward to and it keeps us connected with the important people in our lives.

**Discussion:** As a crew, talk about what ways you all cultivate to keep connections or the lessons you have learned from not keeping those connections. For those of you who have been around awhile, share with the new firefighters and learn about their ideas for maintaining relationships.

For more information on ways to maintain relationships check out these resources:

<https://helpvet.net/10-tips-for-keeping-a-relationship-strong-during-deployment-and-separation/>

[https://www.army.mil/article/66473/coping\\_with\\_deployment\\_separation](https://www.army.mil/article/66473/coping_with_deployment_separation)

<https://www.healthdirect.gov.au/building-and-maintaining-healthy-relationships>



*If you are experiencing thoughts of suicide or are in distress, dial 988 for free, confidential support available 24/7.*

To learn more about the 988 Suicide and Crisis Lifeline and suicide prevention efforts visit: <https://988lifeline.org/>

Suicide Prevention Week – 2022, NWCG Mental Health Subcommittee  
<https://www.nwcg.gov/committees/mental-health-subcommittee> 988  
Suicide and Crisis Lifeline: <https://988lifeline.org>





# **Logistics Message Crockets Knob Fire**

**ICP @ 740 Overholt St, Prairie City Oregon 97869**

**Lead Medical Unit Diana Braun Phone 509-348-0091 or by Radio on CMD Channel**

**Communications: Crockets Knob ICP**  
24-Hours  
Phone: **208-891-8093**

**Meal Service Hours:** Breakfast/Lunch at 0700  
Dinner at 1800

**\*\* Note:** Meal count changes need to be submitted to BCMG Tully Pritchett  
4 hours prior to delivery time.

**Shower Hours:** 0430 to 1200  
1400 to 2130

---

## **Taylor Flats Base Camp**

**4.5 miles North of Hwy 26 and Hwy 7 Junction on Hwy 7**

**Supply: 0630-2130**

All 'S'# orders

call or text Jeremy Marquardt at 360-880-4244

or

email [jeremy.marquardt@DNR.WA.GOV](mailto:jeremy.marquardt@DNR.WA.GOV)

**Meals:** Breakfast 0500-0900; Dinner 1800-2200

**Showers:** 0500-1200 and 1600-2200

**Ground Support:** 0600-2130

**Medical Support :** 0530-2130



# Finance Message



Finance Email: [2022.crocketsknob.finance@firenet.gov](mailto:2022.crocketsknob.finance@firenet.gov)

SUBJECT: *Include Key Word* **TIME** for Overhead, Crews & Cooperators

SUBJECT: *Include Key Word* **EQUIPMENT** for Contract Resources

## Finance Contact Numbers

PERSONNEL: 509-823-6642

EQUIPMENT: 208-890-4869

Finance Section Chief: 509-423-6011

Please Scan this QR code to send all required documents to finance or use the email below



**FINANCE CHECK IN:** [2022.crocketsknob.finance@firenet.gov](mailto:2022.crocketsknob.finance@firenet.gov)

PLEASE ENSURE THE BELOW DOCUMENTS ARE EMAILED

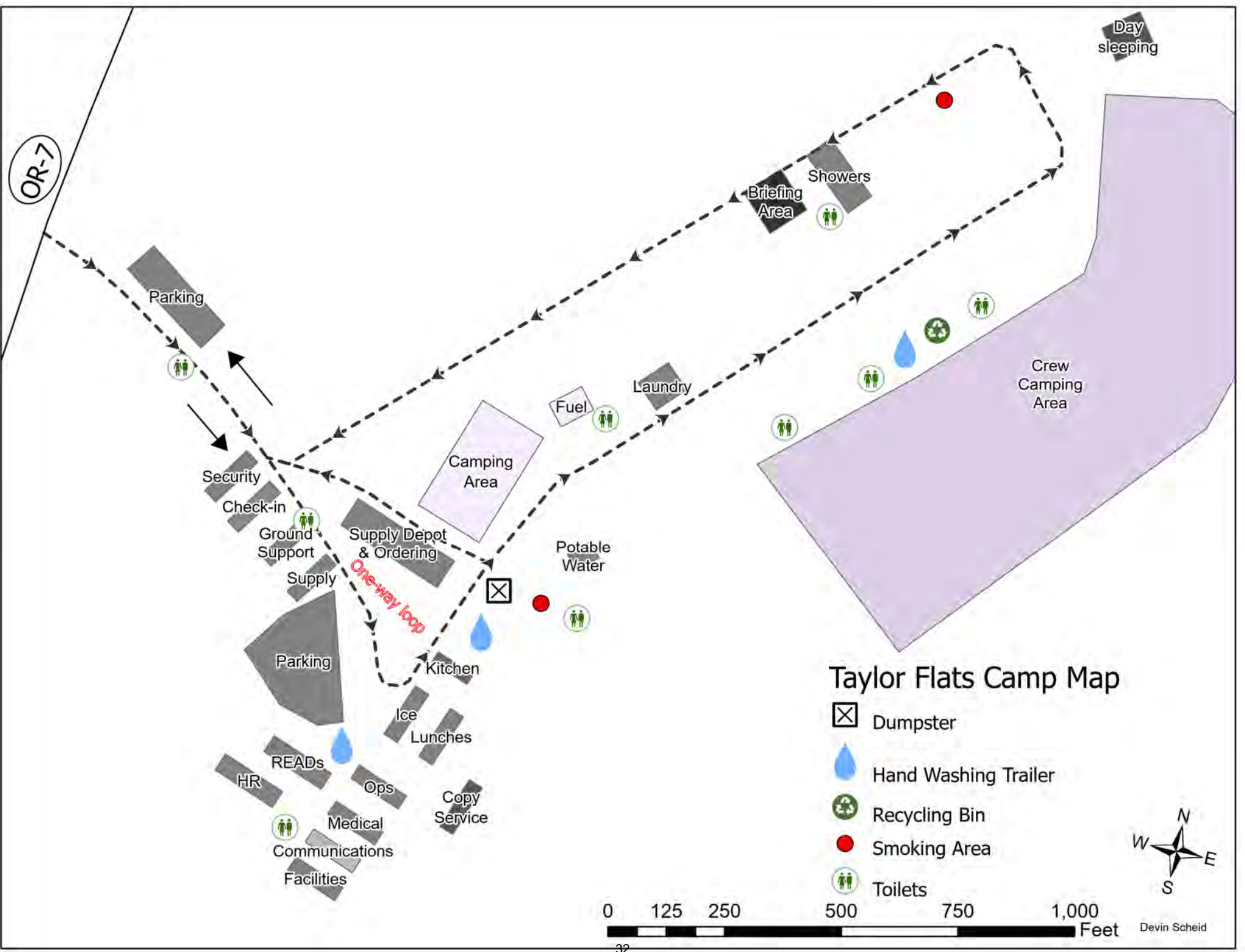
Overhead, Crews & Cooperator Resources	Contract Resources
<ul style="list-style-type: none"> <li>• <b>Check-In:</b> Crew Manifest, Cooperative Agreement (if applies), AD Hire Letter, Resource Order</li> <li>• <b>Daily:</b> Crew Time Report (CTR), Shift Tickets</li> <li>• <b>Demob:</b> Signed OF288, Final Equipment Use Invoice (Cooperator) If you don't have a way to sign you must come to finance.</li> </ul>	<ul style="list-style-type: none"> <li>• <b>Check-In:</b> Resource Order, Contract/VIPR Agreement (make sure you have your UEI, Pre-Inspection</li> <li>• <b>Daily:</b> Shift Tickets, receipts (fuel issues, claims, etc.)</li> <li>• <b>Demob:</b> Contractor Evaluations, Final Shift Tickets and receipt(s) for Addition/Deductions, Post-Inspection, Final Signed Invoices If you don't have a way to sign you must come to finance</li> </ul>

## REMINDERS

- ★ PLEASE ENSURE YOU INCLUDE LOCATION OF WHERE YOU ARE WORKING (BRANCH OR DIVISION) ON CTR OR SHIFT TICKET. MAKE SURE C OR E # IS ON THE CTR OR SHIFT TICKET
- ★ PLEASE SHOW YOUR LUNCH BREAK
- ★ PLEASE USE MILITARY TIME (0001-2400)
- ★ WHEN CLAIMING HAZARD PAY YOU MUST INCLUDE THE SUPPRESSION ACTION BEING PERFORMED. THIS INCLUDES OPERATIONS WHICH DIRECTLY SUPPORT CONTROL OF FIRE (E.G., ACTIVITIES TO EXTINGUISH THE FIRE, FIREFIGHTING, GROUND SCOUTING, SPOT FIRE PATROLLING, SEARCH AND RESCUE OPERATIONS, AND BACKFIRING).
- ★ WHEN SIGNING YOUR OF-288 or OF-286 PLEASE DO NOT LOCK IT or PROTECT THE SIGNATURE, WE HAVE TO BE ABLE TO SIGN IT AND SEND YOU A COPY

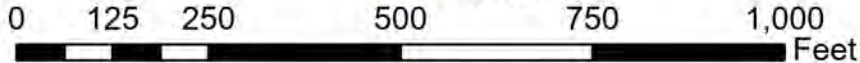
**The following resources need to contact Finance by  
Calling: PERSONNEL: 509-823-6642  
EQUIPMENT: 208-890-4869**

C-4	GRAYBACK FORESTRY		
C-7	EL CARISO IHC		
C-9	IRON MOUNTAIN FIREFIGHTING		
C-10	CSR ENTERPRISES		
C-15	PRESCOTT IHC		
C-16	PIKE IHC		
C-19	WILLAMETTE VALLEY REFORESTATION CREW 3		
C-20	TORRES CONTRACTING CREW		
C-24	WEST COAST REFORESTATION		
C-25	SZ FORESTRY FULLERTON		
C-28	GRAYBACK FORESTRY		



Taylor Flats Camp Map

-  Dumpster
-  Hand Washing Trailer
-  Recycling Bin
-  Smoking Area
-  Toilets

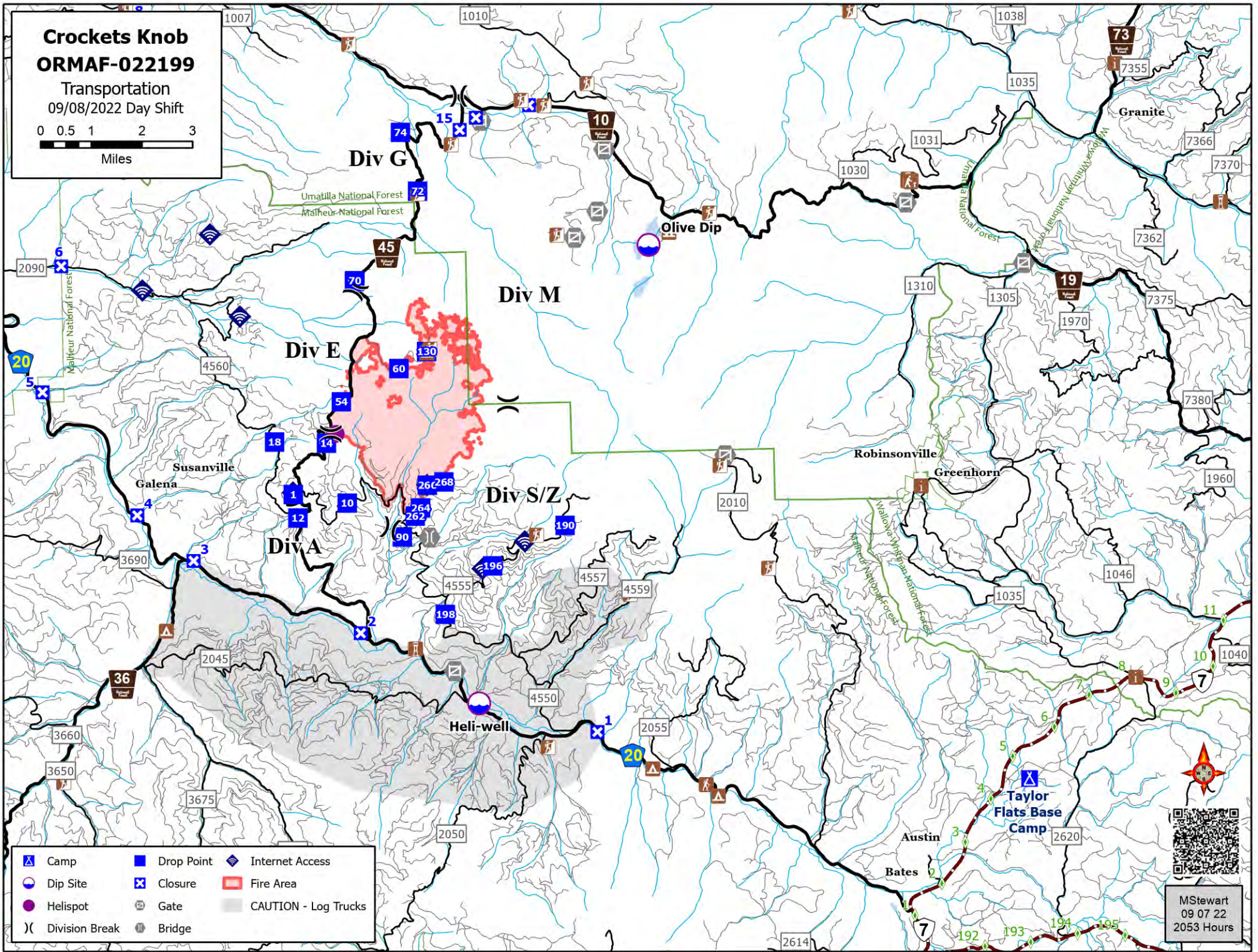
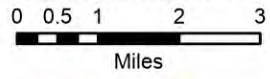


Devin Scheid



# Crocketts Knob ORMAF-022199

Transportation  
09/08/2022 Day Shift



- |                |            |                      |
|----------------|------------|----------------------|
| Camp           | Drop Point | Internet Access      |
| Dip Site       | Closure    | Fire Area            |
| Helispot       | Gate       | CAUTION - Log Trucks |
| Division Break | Bridge     |                      |



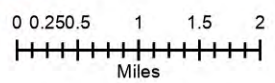
MStewart  
09 07 22  
2053 Hours



# Crocketts Knob ORMAF-022199 IAP Map

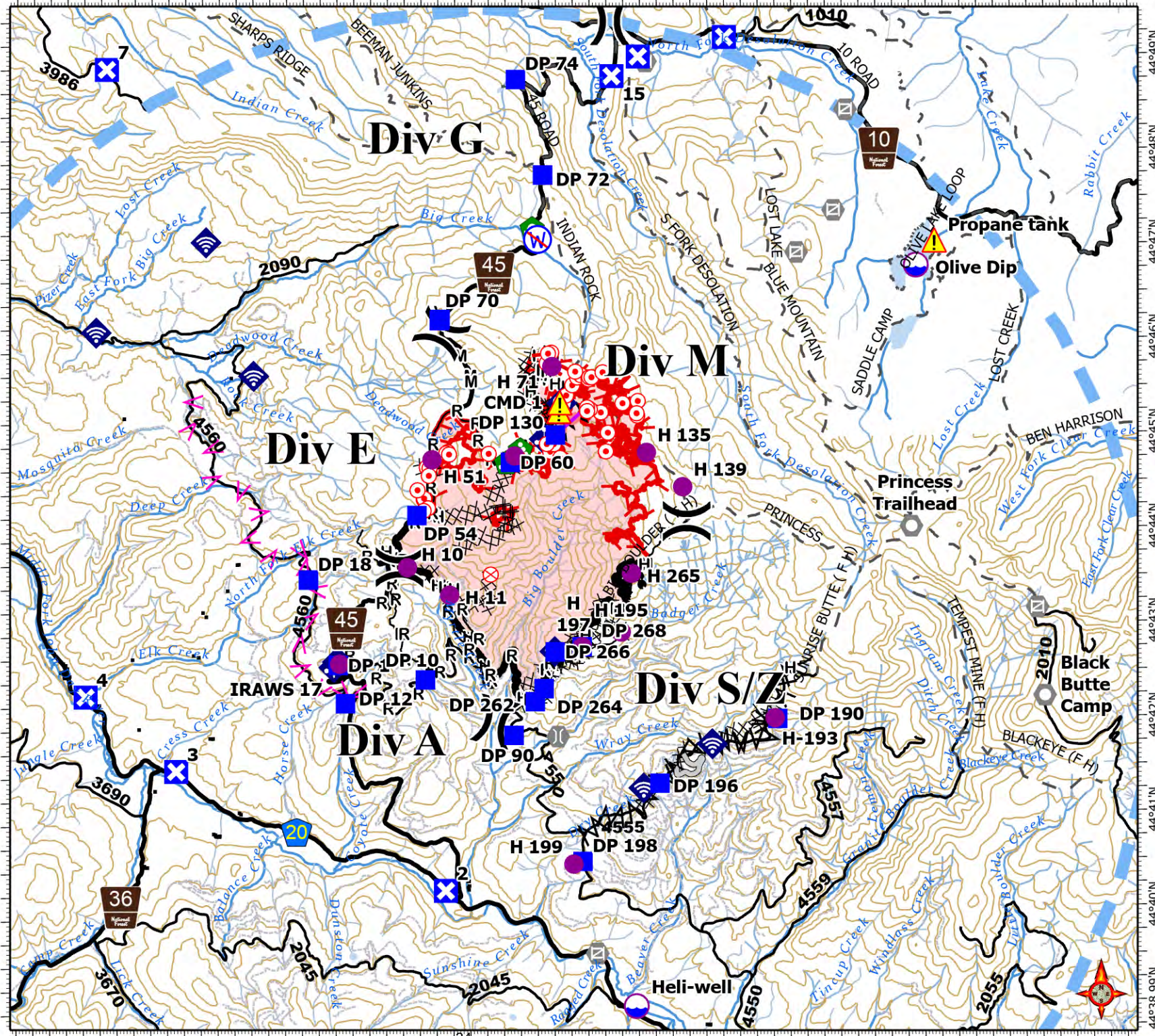
09/08/2022 Day Shift  
4305 acres at 09/07/2022 @ 1330

- Dip Site
- Hellspot
- Division Break
- Drop Point
- Closure
- Hot Spot - Spot Fire
- Fire Origin
- Other
- Landmark
- Gate
- Bridge
- Landing or Log Deck
- Culvert
- Mobile Weather Unit
- Internet Access
- Repeater
- Hazard
- Restricted Water Source
- Completed Dozer Line
- Completed Fuel Break
- Completed Hand Line
- Completed Mixed Construction Line
- Completed Road as Line
- Planned Fuel Break
- Access or Improved Road
- Other
- Retardant Drop
- Temporary Flight Restriction
- Fire Edge (Field Collection)
- Contained
- Uncontained
- Fire Area



S. Bushnell  
09 07 22  
2049 Hours

Acres from IR and GPS  
Datum: North American 1983





# Coordinate Table

FC Point Type	Label	Latitude WGS84 DDM	Longitude WGS84 DDM
Camp	Taylor Flats Base Camp	44° 37.492' N	118° 27.375' W
Closure		44° 49.242' N	118° 39.005' W
Closure		44° 49.050' N	118° 40.292' W
Closure	1	44° 38.473' N	118° 37.716' W
Closure	15	44° 48.847' N	118° 40.688' W
Closure	2	44° 40.261' N	118° 43.341' W
Closure	3	44° 41.562' N	118° 47.318' W
Closure	4	44° 42.362' N	118° 48.647' W
Closure	5	44° 44.507' N	118° 50.862' W
Closure	6	44° 46.660' N	118° 50.349' W
Closure	7	44° 48.997' N	118° 48.192' W
Closure	8	44° 51.052' N	118° 48.674' W
Dip Site	Heli-well	44° 39.010' N	118° 40.536' W
Dip Site	Olive Dip	44° 46.800' N	118° 36.206' W
Drop Point		44° 46.292' N	118° 43.303' W
Drop Point	DP 1	44° 42.662' N	118° 44.886' W
Drop Point	DP 10	44° 42.495' N	118° 43.594' W
Drop Point	DP 12	44° 42.257' N	118° 44.787' W
Drop Point	DP 130	44° 45.063' N	118° 41.604' W
Drop Point	DP 18	44° 43.570' N	118° 45.308' W
Drop Point	DP 190	44° 42.027' N	118° 38.372' W
Drop Point	DP 196	44° 41.363' N	118° 40.138' W
Drop Point	DP 198	44° 40.550' N	118° 41.299' W
Drop Point	DP 262	44° 42.246' N	118° 41.967' W
Drop Point	DP 264	44° 42.383' N	118° 41.834' W
Drop Point	DP 266	44° 42.770' N	118° 41.659' W
Drop Point	DP 268	44° 42.820' N	118° 41.260' W
Drop Point	DP 54	44° 44.234' N	118° 43.682' W
Drop Point	DP 60	44° 44.781' N	118° 42.280' W
Drop Point	DP 70	44° 46.303' N	118° 43.291' W
Drop Point	DP 72	44° 47.813' N	118° 41.733' W
Drop Point	DP 74	44° 48.828' N	118° 42.114' W
Drop Point	DP 90	44° 41.893' N	118° 42.291' W
Helibase		44° 24.076' N	118° 57.727' W
Helispot	H-193	44° 42.035' N	118° 38.409' W
Helispot	H 10	44° 43.684' N	118° 43.835' W
Helispot	H 11	44° 43.387' N	118° 43.214' W
Helispot	H 135	44° 44.863' N	118° 40.257' W
Helispot	H 139	44° 44.494' N	118° 39.727' W
Helispot	H 15	44° 42.675' N	118° 44.864' W
Helispot	H 195	44° 42.968' N	118° 40.675' W
Helispot	H 197	44° 42.820' N	118° 41.260' W
Helispot	H 199	44° 40.523' N	118° 41.434' W
Helispot	H 265	44° 43.588' N	118° 40.508' W
Helispot	H 51	44° 44.821' N	118° 43.445' W
Helispot	H 59	44° 44.848' N	118° 42.216' W
Helispot	H 71	44° 45.787' N	118° 41.642' W
Incident Command Post	Prairie City	44° 27.285' N	118° 42.554' W
Internet Access		44° 42.720' N	118° 41.769' W
Internet Access		44° 42.698' N	118° 44.894' W
Internet Access		44° 41.317' N	118° 40.378' W
Internet Access		44° 41.771' N	118° 39.349' W
Internet Access		44° 45.733' N	118° 46.076' W
Internet Access		44° 47.152' N	118° 46.753' W
Internet Access		44° 46.215' N	118° 48.406' W
Landing or Log Deck		44° 44.916' N	118° 42.128' W
Landing or Log Deck		44° 44.782' N	118° 42.339' W





## COVID-19 Mitigations for Crockets Knob Fire

- Masks are not required indoors unless working in a county with a HIGH COVID-19 community level. Currently, Grant County community level is MODERATE (masking indoors is optional).
- Conduct daily verbal screening checks within crews, report any COVID-like symptoms to your direct supervisor. Supervisors should report any positive symptoms to the Medical Unit for next steps.
- Observe social distancing standards while waiting in line for food and limit contact with others outside of your crew in the food service line. If possible, send crew representatives to pick up meals.
- Practice good personal hygiene, wash hands frequently and disinfect high-traffic areas on a regular basis.
- Limit close contact between firefighters and the public as much as possible to prevent exposure and spread.





# EMERGENCY PLAN INCIDENT WITHIN AN INCIDENT

## ON SCENE INCIDENT COMMANDER

In the event of an accident or medical incident of any size, your primary responsibility is to ENSURE that the victim(s) receive prompt and effective Triage, Treatment, Extrication and Transport.

- **ENSURE THE MEDICAL INCIDENT REPORT IN THE INCIDENT ACTION PLAN IS BEING USED AND FOLLOWED- \*IF DETERMINED TO BE A GREEN, DO NOT DECLARE EMERGENCY TRAFFIC AND ONLY COMPLETE LINE 1-4 ON MIR\*.**
- Conduct size-up of the incident nature of accident, number type of resources involved, latitude and longitude location (DD°MMM.MM format): notify incident communications center and supervisor, request assistance as needed.
- Order and coordinate medical and support response to the accident.
- Evaluate special needs (law enforcement, haz mat, etc.).
- Clear the command frequency if medical emergency, coordinate with incident communications and air attack for air medical transportation needs.
- Preserve and photograph the scene for accident investigation.
- Remain aware of surroundings and the status of the main incident (delegate personnel to monitor the main fire) to ensure safety of medical treatment personnel.
- Until relieved, supervise and manage all personnel involved at the incident scene.

# MEDICAL PLAN (ICS 206 WF)

Incident/Project Name		1. Operational Period						
Crockets Knob		September 8, 2022 0600-1800						
2. Ambulance Services								
Name	Complete Address		Phone		Advanced Life Support (ALS)			
Blue Mountain Ambulance	170 Ford Rd John Day, OR		Command/911		Yes	No		
					X			
3. Air Ambulance Services								
Name	Phone		Location					
Life Flight Network	Command/911		20-30 min flight - LaGrande, OR					
Life Flight Network	Command/911		Pendleton, OR					
4. Hospitals								
Name Complete Address	Coordinate Standard Degrees Decimal Minutes DD° MM.MMM' N - Lat DD° MM.MMM' W - Long		Travel Time From Crockett's Knob Air Gnd		Phone	Helipad Yes No		Level of Care Facility
	Lat:	Long:						
Blue Mountain Hospital 170 Ford Rd John Day, OR	44°25.06' N	118°57.60' W	20 mins	1.5 hrs	541-575-1311	X		Level 4
St Charles Medical Center 2500 NE Neff Rd Bend, OR	44°4.1667' N	121°16.0833' W	1 hr	4 hrs	541-882-6311	X		Level 2
Legacy Emanuel 2801 N Gantenbien, Portland, OR	45°32.616' N	122°6695' W	2 hrs	5 hrs	503-413-4321	X		Level 1 Trauma Burn Center
St Alphonsus Medical Center 3325 Pocahontas Rd Baker City, OR	44°52.1108' N	117°51.1856' W	45 mins	1.75 hrs	541-523-6461	X		Level 2
	118°48.4346' W							
5. Division Branch Group	Capability			Personnel				
Div. A				(E-27) Ambo 1 (O-96) Medic 4				
Div. E				(O-94) Medic 1 (O-93) Medic 2 (O-7) EMT (E-87) Blackwoods REM				
Div. M				Utilize nearest medical resource				
Div. S/Z				(O-9) REM 9 (E-51) Ambo 2				
Div. G				Utilize nearest medical resource				
Contingency				(O-95) Medic 3				
Taylor Flats/Bates SP				(E-88) Ambo 3				
6. Prepared By (Medical Unit Leader)			7. Date/Time	8. Reviewed By (Safety Officer)			9. Date/Time	
Diana Braun			09/07/2022 1800	Jack Cates <i>Jack Cates</i>			09/07/2022 1800	

# Short-Haul Operations

## CAPABILITIES

- During an operational Short-Haul the helicopter is capable of inserting Short-Haulers into an area with tight canopy cover and/or technical terrain.
- Haul line lengths range from 100 feet to 350 feet.
- Short hauler and/or medical gear can be delivered to the medical scene even if extraction by short-haul is not necessary.

## ORDERING

- EMT or Medical Incident IC determines medical extraction is required.
- Follow local established procedures and/or Medical Incident Report (MIR) in the IRPG.
- Confirm aircraft type, call sign, estimated time of arrival and frequency.
- Give site selection information when ordering: hazards (i.e. ash, smoke, snags, aerial), tree height, terrain, and patient transport configuration (supine or seated position). Repeat hazards and give updated weather conditions as well as brief patient update to responding helicopter.

**PROCESS:** The helicopter will fly to the coordinates provided. They will make contact with ground personnel on scene with the patient using an identified air-to-ground frequency. The helicopter will complete a short-haul recon and size up, gather patient update information and then fly to a landing zone (LZ) to configure for short-haul operations. The helicopter will be monitoring the appropriate air-to-ground, air guard and victor frequencies. From this point, ground resources should only contact the helicopter in case of an emergency. During the insertion and extraction process ground personnel must be clear of the area.

## ON SCENE: EXPECT THE FOLLOWING

- 1 or 2 rescuers (at least one qualified as an EMT or higher)
- Backboard (if needed and not already on scene)
- All equipment necessary for patient extraction

The Patient Extraction Bag accommodates most backboards.  
-A patient on a backboard, TRS, SKED or litter will be inserted into the bag.



The Seat Harness is used for patients not requiring the use of a backboard.



IAP INSERT

# MEDICAL PLAN (ICS 206 WF)

Controlled Unclassified Information//Basic

## Medical Incident Report

**FOR A NON-EMERGENCY INCIDENT, WORK THROUGH CHAIN OF COMMAND TO REPORT AND TRANSPORT INJURED PERSONNEL AS NECESSARY.**

**FOR A MEDICAL EMERGENCY: IDENTIFY ON SCENE INCIDENT COMMANDER BY NAME AND POSITION AND ANNOUNCE "MEDICAL EMERGENCY" TO INITIATE RESPONSE FROM IMT COMMUNICATIONS/DISPATCH.**

Use the following items to communicate situation to communications/dispatch.

1. CONTACT COMMUNICATIONS / DISPATCH (**Verify correct frequency prior to starting report**)

*Ex: "Communications, Div. Alpha. Stand-by for Emergency Traffic."*

2. INCIDENT STATUS: *Provide incident summary (including number of patients) and command structure.*

*Ex: "Communications, I have a Red priority patient, unconscious, struck by a falling tree. Requesting air ambulance to Forest Road 1 at (Lat./Long.) This will be the Trout Meadow Medical, IC is TFLD Jones. EMT Smith is providing medical care."*

Severity of Emergency / Transport Priority	<input type="checkbox"/> RED / PRIORITY 1 Life or limb threatening injury or illness. Evacuation need is IMMEDIATE <i>Ex: Unconscious, difficulty breathing, bleeding severely, 2° – 3° burns more than 4 palm sizes, heat stroke, disoriented.</i> <input type="checkbox"/> YELLOW / PRIORITY 2 Serious Injury or illness. Evacuation may be DELAYED if necessary. <i>Ex: Significant trauma, unable to walk, 2° – 3° burns not more than 1-3 palm sizes.</i> <input type="checkbox"/> GREEN / PRIORITY 3 Minor Injury or illness. Non-Emergency transport <i>Ex: Sprains, strains, minor heat-related illness.</i>	
Nature of Injury or Illness & Mechanism of Injury		<i>Brief Summary of Injury or Illness (Ex: Unconscious, Struck by Falling Tree)</i>
Transport Request		<i>Air Ambulance / Short Haul/Hoist Ground Ambulance / Other</i>
Patient Location		<i>Descriptive Location &amp; Lat. / Long. (WGS84)</i>
Incident Name		<i>Geographic Name + "Medical" (Ex: Trout Meadow Medical)</i>
On-Scene Incident Commander		<i>Name of on-scene IC of Incident within an Incident (Ex: TFLD Jones)</i>
Patient Care		<i>Name of Care Provider (Ex: EMT Smith)</i>

3. INITIAL PATIENT ASSESSMENT: *Complete this section for each patient as applicable (start with the most severe patient)*

Patient Assessment: See IRPG page 106

Treatment:

4. TRANSPORT PLAN:

Evacuation Location (if different): *(Descriptive Location (drop point, intersection, etc.) or Lat. / Long.)* Patient's ETA to Evacuation Location:

Helispot / Extraction Site Size and Hazards:

5. ADDITIONAL RESOURCES / EQUIPMENT NEEDS:

*Example: Paramedic/EMT, Crews, Immobilization Devices, AED, Oxygen, Trauma Bag, IV/Fluid(s), Splints, Rope rescue, Wheeled litter, HAZMAT, Extrication*

6. COMMUNICATIONS: Identify State Air/Ground EMS Frequencies and Hospital Contacts as applicable

Function	Channel Name/Number	Receive (RX)	Tone/NAC *	Transmit (TX)	Tone/NAC *
COMMAND					
AIR-TO-GRND					
TACTICAL					

7. CONTINGENCY: **Considerations:** *If primary options fail, what actions can be implemented in conjunction with primary evacuation method? Be thinking ahead.*

8. ADDITIONAL INFORMATION: *Updates/Changes, etc.*

**REMEMBER:** Confirm ETA's of resources ordered. Act according to your level of training. Be Alert. Keep Calm. Think Clearly. Act Decisively.

Controlled Unclassified Information//Basic