

# Incident Action Plan

## CROCKETS KNOB FIRE

**September 10, 2022**

0600-1800 Operational Period



OR-MAF-022199  
P6 POXK (0604)  
221-IWR

SCAN QR CODE

For

BRIEFING LINK

DOWNLOAD IAP

DOWNLOAD MAPS

Send in PHOTOS

CHECK-IN

Submit TIME to FINANCE



This page intentionally left blank.



## INCIDENT OBJECTIVES (ICS 202)

<b>1. Incident Name:</b>	<b>2. Operational Period: DAY</b>	
CROCKETS KNOB	Date/Time From: 09/10/2022 0600      SAT	Date/Time To: 09/10/2022 1800      SAT
<b>3. Objective(s):</b>		
<ul style="list-style-type: none"> <li>• Identify, evaluate and reduce risks to firefighters and the public through the use of Deliberate Risk Assessment process.</li> <li>• Minimize acres burned and impacts to communities and infrastructure by completing a strategic risk assessment to guide operations in the development of strategies and tactics to be implemented by fire personnel.</li> <li>• Protect tribal, cultural, aquatic and wildlife resources, and sensitive plant sites.</li> <li>• Provide Initial Attack response and assistance for private and public lands within the delegated area.</li> <li>• Maintain and enhance relationships with cooperators, stake holders, landowners, and communities by providing accurate and timely information.</li> <li>• Manage cost commensurate with values at risk and maintain fiscal accountability.</li> <li>• Treat each other with dignity and respect and act in a professional manner while on the fire and in the community.</li> <li>• Ensure COVID-19 best management practices are in place and follow local CDC guidelines.</li> </ul>		
<b>4. Operational Period Command Emphasis:</b>		
Implement strategies and tactics to achieve incident objectives with the least amount of risk practical and the highest probability of success.		
<b>General Situational Awareness:</b>		
Conditions remain hot and dry and fuels are still highly receptive to fire spread. Expect to continue to assist the local unit with initial attack response and other ongoing incidents. Our fire still has potential to escape control lines, ensure that mop-up standards are being met and adequate patrols are occurring. Maintain accountability of all assigned resources while engaged on the fireline.		
<b>5. Site Safety Plan Required?</b> Yes <input type="checkbox"/> No <input checked="" type="checkbox"/>		
<b>Approved Site Safety Plan(s) Located</b>		
<b>6. Incident Action Plan</b> (the items checked below are included in this Incident Action Plan):		
<input checked="" type="checkbox"/> ICS 202 <input checked="" type="checkbox"/> ICS 203 <input checked="" type="checkbox"/> ICS 204 <input checked="" type="checkbox"/> ICS 205 <input type="checkbox"/> ICS 205A <input checked="" type="checkbox"/> ICS 206	<input type="checkbox"/> ICS 207 <input type="checkbox"/> ICS 208 <input checked="" type="checkbox"/> ICS 220 <input checked="" type="checkbox"/> Map/Chart <input checked="" type="checkbox"/> Weather Forecast/Tides/Currents	<b>Other Attachments:</b> <input checked="" type="checkbox"/> HR MESSAGE <input checked="" type="checkbox"/> UNIT LOG <input type="checkbox"/> _____ <input type="checkbox"/> _____
<b>7. Prepared by:</b> JILL JOHNSON	<b>Position/Title:</b> PSC2	<b>Signature:</b> <i>Jill Johnson</i>
<b>8. Approved by Incident Commander:</b>	<b>Name:</b> BOBBY SHINDELAR	<b>Signature:</b> <i>Bobby Shindelar</i>
<b>ICS 202</b>	<b>IAP Page</b>	<b>Date/Time:</b> 09/09/2022 2000

## ORGANIZATION ASSIGNMENT LIST (ICS 203)

<b>1. Incident Name:</b>		<b>2. Operational Period: DAY</b>	
CROCKETS KNOB		Date/Time From: 09/10/2022 0600 SAT	Date/Time To: 09/10/2022 1800 SAT
<b>3. Incident Commander(s) and Command Staff:</b>			
IC/UC	BOBBY SHINDELAR JEFF BOUSCHOR (T)	GROUND SUPPORT UNIT	DAVE HARSH
SAFETY OFFICER	JACK CATES TAIJA CORSO	COMMUNICATIONS UNIT	MISSY PARKER JOHN LYONS (T)
INFORMATION OFFICER	JOEL BRUMM LIV STECKER	MEDICAL UNIT	EAMONN RYAN DIANA BRAUN
LIAISON OFFICER	SCOTT CRAWFORD JEFF SEVIGNEY (T)	SECURITY UNIT	TOM TAYLOR JOE ROBERTSON (T)
HUMAN RESOURCE SPECIALIST	SUSIE MANEZES (ICP)	FOOD UNIT	ALEX LILLA
<b>7. Operations Section:</b>			
<b>4. Agency/Organization Representative(s):</b>		OPS SECTION CHIEF	TONY ENGEL JEROMY WILSON (T)
<b>Agency/Organization</b>	<b>Name</b>	PLANNING OPS	KURT RANTA CODY ACORD (T)
USFS - MALHEUR	ANN NIESEN CRAIG TRULOCK	STAGING AREA	
USFS - MALHEUR	JOSHUA GILES		
USFS - UMATILLA	STEPHANEY KERLEY		
LEAD READ	MATT SMITH (T)	DIVISION/GROUP A	BOB HINDS IAN MCCORD (T)
INTERAGENCY RESOURCE REPRESENTATIVE	PAUL GIBBS 951-903-4135	DIVISION/GROUP E	JON STONELAKE
<b>5. Planning Section:</b>		DIVISION/GROUP G	DJ GOLDSMITH
CHIEF	JILL JOHNSON	DIVISION/GROUP M	BRAD BRYANT
DEPUTY	ERIC BLACK HOWARD JOHNSON (VIRTUAL)	DIVISION/GROUP S/Z	LARRY LEACH
RESOURCES UNIT	MARGE HUTCHINSON	DIVISION/GROUP CONTINGENCY	EZRA BUTTERFIELD
SITUATION UNIT		DIVISION/GROUP STRUCTURE/IA	JIM WALKOWSKI
DOCUMENTATION UNIT	DEIDRE SMITH (VIRTUAL)	<b>7b. Air Operations Branch:</b>	
DEMOBILIZATION UNIT	MIKE HESTON (VIRTUAL)	AIR OPS BRANCH DIRECTOR	PAUL BALFOUR
FIRE BEHAVIOR ANALYST	DON STRAND	AIR SUPPORT SUPERVISOR	
TRAINING SPECIALIST			
GIS SPECIALIST	SHAWN BUSHNELL	<b>8. Finance/Administration Section:</b>	
TECHNOLOGY SUPPORT SPECIALIST	GEORGE JENKINS BRADLEY DILG	CHIEF	CHERI FULLER
INCIDENT METEOROLOGIST	DEREK WILLIAMS JAMES WHITE (T)	DEPUTY	CHRISTINA GOEBEL
<b>6. Logistics Section:</b>		TIME UNIT	STEVE CROW
CHIEF	KEVIN HAUGHTON (TAYLOR FLATS) PAUL FOOTEN (ICP) (T)	PROCUREMENT UNIT	MARK BOHNET
FACILITIES UNIT	LEE VENNING (TAYLOR FLATS) RICHARD CROWTHER (ICP)	INCIDENT CONTRACT PROJ INSP	ROB HECHINGER
BASE CAMP MANAGER	TULLY PRITCHETT (ICP) KARA DOESCHER (TAYLOR FLATS) (T)	COST UNIT	KAY HIGH (VIRTUAL)
SUPPLY UNIT	JOHN KAUPA THAD FRATER (T)		
<b>9. Prepared By:</b>	<b>Name:</b> MARGE HUTCHINSON	<b>Position/Title:</b> RESL	<b>Signature:</b>
ICS 203	IAP Page	<b>Date/Time:</b> 09/09/2022 2000	<i>Marge Hutchinson</i>



# Fire Weather Forecast

**FORECAST NO: 14**  
**PREDICTION FOR: Saturday-Sunday**  
**DATE: September 9<sup>th</sup>, 2022**  
**FORECAST ISSUED: 2000 September 8<sup>th</sup>, 2022**

**Fire: Crockets Knob**  
**UNIT: OR-MAF-022199**  
**Incident Meteorologist: James White (T)**  
**Signed: *James White***

**WEATHER DISCUSSION:** With low pressure hanging offshore, consistent east wind is blowing across the area. East wind will build through the morning with gusts just below 25 mph before calming down below 15 mph in the afternoon. With weakening cold air advection, temperatures will slowly increase with low elevation locations likely returning to the mid-80s today. RH will remain very dry in the low teens at all elevations. Temperatures will slightly warm tonight with lows returning to the 40s and 50s. Recovery will stay poor to very poor. Modest warming and dry weather will continue Sunday with gentle terrain driven winds.

**TODAY:**

**WEATHER:** Mostly clear. Increased haze from nearby fires.

<b>MAX TEMP:</b>	<b>Valleys:</b> 85-89° (2-5° ↑)	<b>MIN RH:</b>	<b>Valleys:</b> 8-13% (1-3% ↓)
	<b>Ridgetops:</b> 69-73° (2-4° ↑)		<b>Ridgetops:</b> 11-16% (2-4% ↓)
<b>CHC WTG RAIN:</b> 0%	<b>LAL:</b> 1	<b>HAINES:</b>	5 (Moderate)

**WINDS:** **Valleys:** Morning downslope winds 2-4 mph. Upslope 4-8 mph gusts to 15 mph developing after 1200.  
**(20 feet)** **Ridgetops:** East 7-10 mph in the morning, increasing 10-14mph gusts to 23 mph just after sunrise. Transitioning SE 6-10 mph gusts to 15 mph in the afternoon.

**MIXING HEIGHT:** Rising to 6,000 feet above sea level by 1600.

**TRANSPORT WIND:** Southeast 11-15 mph.

**VISIBILITY:** 5-7 miles. **INVERSION:** Shallow, weak inversion

**TONIGHT:**

**WEATHER:** Mostly clear.

<b>MIN TEMP:</b>	<b>Valleys:</b> 46-50° (3-6° ↑)	<b>MAX RH:</b>	<b>Valleys:</b> 42-47% (1-3% ↑)
	<b>Ridgetops:</b> 51-55° (4-7° ↑)		<b>Ridgetops:</b> 33-38% (No Change)
<b>CHC WTG RAIN:</b> 0%	<b>LAL:</b> 1		

**WINDS:** **Valleys:** Downslope and down valley winds of 2-5 mph throughout the night  
**(20 FEET)** **Ridgetops:** Southeast winds 5-9 mph throughout the night

**TRANSPORT WIND:** Southeast 5-8 mph.

**SUNDAY:**

**WEATHER:** Mostly clear.

<b>MAX TEMP:</b>	<b>Valleys:</b> 89-93° (2-5° ↑)	<b>MIN RH:</b>	<b>Valleys:</b> 8-13% (No Change)
	<b>Ridgetops:</b> 75-79° (2-5° ↑)		<b>Ridgetops:</b> 10-15% (No Change)
<b>CHC WTG RAIN:</b> 0%	<b>LAL:</b> 1	<b>HAINES:</b>	5 (Moderate)

**WINDS:** **Valleys:** Morning downslope winds 2-4 mph. Upslope 4-8 mph gusts to 12 mph developing after 1200.  
**(20 feet)** **Ridgetops:** Southeast 4-8 mph in the morning with gusts to 13 mph late in the afternoon.

**MIXING HEIGHT:** Rising to 8,000 feet by 1600.

**TRANSPORT WIND:** North 3-6 mph.

**VISIBILITY:** 6-8 miles. **INVERSION:** Weak, shallow inversion

**EXTENDED OUTLOOK:** Aided by increasing sky cover, cooler temperatures will return early next week with highs back in the low 70s. Humidity will gradually increase starting on Monday with minimum RH around 40% by Thursday. Winds will remain gentle and terrain driven with gusts around 15 mph. High elevation winds will generally remain out of the northwest. There is a chance of wetting rain starting Tuesday with the greatest chance on Wednesday. Any rain is expected to stay below 0.2 inches with a slight chance of thunder.



Nearby Weather Observations →

# FIRE BEHAVIOR FORECAST

FORECAST NUMBER: 14	TYPE OF FIRE: WILDFIRE
FIRE NAME: Crockets Knob	OPERATIONAL PERIOD: Day Shift Sept 10, 2022
DATE ISSUED: Sept 9, 2022	TIME ISSUED: 2000 HOURS
UNIT: OR-MAF	Don Strand NW IMT12 FBAN

## INPUTS

**WEATHER SUMMARY:** See attached weather forecast. Max temps – near 73 degrees, min RH near mid-teens. Winds – upslope 4-8 mph with gusts to 15 mph after 1200 hrs. Ridgetop winds – East 7-10 mph in the early morning increasing to 10-14 mph with gusts to 23 mph just after sunrise. Transitioning SE 6-10 mph gusts to 15 by afternoon. Haines Index 5 (moderate).

**FUELS:** Consists of brush, dense regeneration with a surface litter of large down wood. The fire area also contains snags and areas with remnant live trees which survived the 1996 fire.

Live fuel moistures in live woody fuels are near 95% 1000-hour dead fuel moistures are now 9%.  
**Energy Release Component forecasted for today is near the 99<sup>th</sup> percentile.**

## OUTPUTS

### FIRE BEHAVIOR

**GENERAL:**

Fire behavior potential remains elevated due to dry fuel, low daytime RH, poor nighttime humidity recovery, unstable atmosphere and afternoon breezy conditions. Probability for active fire inside control lines is decreasing. Expect smoldering and creeping fire behavior with isolated areas with backing and flanking in interior areas of dirty burns. Chance of isolated torching decreasing with spotting still exists.

- Sub alpine trees are present in the upper elevations and can torch, producing numerous fire brands.
- Spot fires initiate quickly and are difficult to suppress.

POI: near 80%. Maximum spotting distance is near 1000 feet.

- Head fire rates of spread in the surface fuels will be 4 to 6 feet/minute. On steeper slopes and with wind gusts, 12 to 18 feet/minute.

**SPECIFIC:**

**DIV A/E/Z:** Areas of smoldering and creeping. Slight potential for flare ups exists in interior islands.

**DIV M:** Areas of smoldering and creeping. Some potential for isolated torching in areas of dirty burns in sub alpine fir over timber litter surface fuels.

**INITIAL ATTACK:** In the event resources respond to a new start, continue to update your Situational Awareness. Light fuels quickly react to winds/slope alignment and changes in wind direction.

**AIR OPERATIONS:** Expect areas of smoke haze/drift in the area.

**SAFETY** Find the fire behavior/weather terms on the word puzzle.

Adiabatic Angular momentum Cirrus  
 Flanking Ground Fuels Mineral soil Virga  
 Albedo Brush Cumulus Foehn winds  
 Hazard trees Petricor Vorticity Analema  
 Burning period Firewhirl Fuel moisture  
 Heat exhaustion Reproduction Zulu time

S L E U F D N U O R G B J B X E X A A P  
 N O I T S U A H X E T A E H R X X N N Q  
 S G I F P Z Y M H W H E L U X U N M G P  
 E H C V E E B X D Z L Q T Y X A S B U R  
 E D T W T B M L N I I S O N X Z K H L P  
 R W Q N R F N I O U I E X L Y Q J P A R  
 T E O C I K E S T O P V Y C Q K U I R E  
 D M N M C V L F M U J A X I H P L S M P  
 R I L O O A L L X X L E S T U R V U O R  
 A F K L R A E R A Z K U S A R S G L M O  
 Z H N E N U W N I N E D Z B P N C U E D  
 A A N K F L A V W H N Q L A V R G M N U  
 H I I A T L T M O I W X V I R G A U T C  
 M N O D E B L A W R H E K D J M H C U T  
 G W N M R C P N W P T K R A M P W F M I  
 O X A Y I Y H T H A N I R I D J C E K O  
 P I H R Q E P L L Z O H C S F X X K U N  
 B R R F O I J T M J L G A I Z N N H B E  
 Q U U F E J G G I O Y S U Z T T A E C J  
 S B U R N I N G P E R I O D B Y S R L H

# Safety Message

10 September 2022

INCIDENT: CROCKETS KNOB

OPERATIONAL PERIOD: 0600-1800

## TOPICS:

### COMMON BARRIERS TO EFFECTIVE COMMUNICATION INCLUDE: (part 4 of 4)

**Negative Body Language.** If you disagree with or dislike what's being said, you may use negative body language to rebuff the other person's message, such as crossing your arms, avoiding eye contact, or tapping your feet. You don't have to agree, or even like what's being said, but to communicate effectively and not make the other person defensive, it's important to avoid sending negative signals.



The Forest Type 3 will shadow today and transition at 1800 tonight. Transition is a time that can be marred by extreme success or failure. Ensure positive relationship building and open lines of communications. Take a few extra minutes to get to know new personnel and provide a good briefing of actions taken up to the transition.

### TRAVEL HOME

Many of you will time out and demob over the next 24-72 hours. It is imperative that demob doesn't turn into a race to get on the road and a 24 Hours of LeMans road race. Make sure you get plenty of rest before travel. Have a plan to rotate driving to avoid fatigue. Take your time and have a plan! Watch out for the Cycle Oregon event on Sunday morning. Cyclists will leave John Day and travel on SR26, SR395 and CR20.

SAFETY OFFICER: Taija Corso, Troy Corn, Jack Cates

## Deliberate Risk Assessment-Hazard Summary

### 10 September 2022

Hazard	Mitigation	Post Risk
Extraction Time	Utilize shorthaul, agency and civilian medivac as treatment/timing dictates. Review ordering procedure for all aircraft. Establish redundant plans for evac if using aircraft. Identify medivac sites and helispots. Initiate ground transport to accident site for transport capability. Identify EMT/EMTP from resources assigned to division. Provide line qualified paramedics to each division as available. Review IWI protocol to ensure familiarity. Evaluate on-going need for repositioning medical personnel. Provide dust abatement on Helispots as needed. Recognize that ground extraction times in North half of fire are long, have plan in place for patient transfer to aviation if Red Medical.	HIGH
Aircraft	Utilize Air Attack. Ensure all resources are a safe distance from all bucket and retardant drops. Establish LCES. Utilize air to ground primary for fixed wing, air to ground 2 for bucket work as needed. Reference IRPG (Safe aircraft operations pg. 61-62). Ensure IA resources have coordination with unassigned local air resources to provide deconfliction.	HIGH
Hazard Trees	Use avoidance to limit exposure time. Fall ahead to avoid exposure. Use qualified fallers or alternate methods if needed. Conduct on-going risk analysis of all new and existing work areas. Follow Hazard Tree Safety Guidelines (IRPG page 20-21).	HIGH
Heavy Equipment	Post lookouts around equipment work areas. Establish communications with equipment boss and operator. Do not work down slope from equipment. Follow agency guidelines for chipping operations.	HIGH
Physical Factors	Maintain hydration schedule. Closely monitor work rate and implement rest periods. Maintain nutrition. Ensure adequate work/rest.	MODERATE
Fire Behavior	Maintain awareness of increased spotting distances with changes in fire weather. Be aware of burn windows and weather impacts and min/max RH for flashy fuels/local conditions. Report changes to FBAN and IMET. Establish MAP for disengagement to provide for an orderly retreat given lack of safety zones. Have a plan for disengagement that establishes a designated meeting point and maintains personnel accountability.	MODERATE
Steep Terrain/Gravity	Do not work crews above or below each other. Post lookouts for rolling material. Watch footing in loose soil, rock and around vegetation. Do not work below heavy equipment. Scout and identify travel routes.	MODERATE
Unburned Fuels/Firing Ops	Maintain awareness fuel dryness levels. Establish LCES. Ensure management action points are implemented and followed. Weather updates as needed during burning operations. Locate indirect firelines to minimize unburned fuels. Follow Interagency Ignition Guide. Ensure communications between all firing operations. Establish road security at all firing sites. Follow approved firing plan for unburned fuels. If utilizing aerial ignitions, make sure firing plan is in place and communicated to all resources and understood. Utilize separate Air to Ground for operation as appropriate.	MODERATE
Transportation	Sign all incident roads that provide access to divisions to include mile markers and turnouts. Provide daily updated travel plan maps. Practice defensive driving. In local communities obey the posted speed limits in town and recognize the school zone around camp and the presence of children along streets and roadways. Use reader boards to provide advanced warning and control entry to base camp as needed. Identify and evaluate contingency and alternate escape and travel routes. Provide dust abatement and grading as needed. Provide advanced scouting for transport access and bridge weight restrictions. Evaluate road conditions for access, egress, and travel routes to the north of the fire for drivability and safety.	MODERATE
Initial Attack	Ensure identified IA resources are briefed of expectations and ensure communication plan is provided. Ensure resources are briefed on IA command structure. Provide identified crews with area maps.	MODERATE
ATV/UTV	Follow agency specific rules and regulations for proper PPE. Make sure operators are properly licensed and trained. Operate machine to the current and expected conditions. Do not overload machine.	MODERATE



## Deliberate Risk Assessment-Hazard Summary

### 10 September 2022

Environmental Factors	Assign medical personnel to camp. Assess for known allergies and report to medical personnel. Obtain Bee Bopper/wasp spray and yellow jacket traps. Maintain an awareness of livestock, wildlife, and rattlesnakes. Identify and report allergies to your chain of command. Work with READs and GISS to evaluate and identify mineshafts. Refer to IRPG page 17 for thunderstorm safety.	MODERATE
Communication	Evaluate for dead zones prior to engagement. Utilize human repeaters as needed. Ensure coverage and accountability of resources in problem areas. Spiking resources must be in cell coverage. 24 staffing at JDICC will serve as a backup. Spike locations relayed to Ops daily.	LOW
Public Interaction	Ensure changes to closures and evacuation levels are fully communicated to incident personnel and the public. Implement area and road closures as necessary. Maintain a lookout for hunters in and out of closure areas. Maintain awareness of evacuation areas and provide accurate information dissemination.	LOW
Viral Transmission Mitigations, Communicable Disease	Maintain awareness of health, perform self-checks, maintain social distancing, wear face coverings in accordance with CDC recommendations. Report and isolate if not feeling well. Establish liaison with Grant County Public Health.	LOW

**Division/Group Assignment List (ICS 204 WF)**  
**Controlled Unclassified Information//Basic**

<b>1. Incident Name:</b>			<b>3.</b>			
CROCKETS KNOB			<b>Branch:</b>		<b>Division/Group</b>	
<b>2. Operational Period:</b> DAY			A			
Date/Time From: 09/10/2022 0600 SAT		Date/Time To: 09/10/2022 1800 SAT				
<b>4. Operations Personnel</b>						
<b>OPERATIONS CHIEF</b>		TONY ENGEL JEROMY WILSON (T) KURT RANTA; CODY ACORD (T)		<b>DIVISION/GROUP SUPERVISOR</b>		BOB HINDS IAN MCCORD (T)
<b>SAFETY OFFICER</b>		JACK CATES TAIJASA CORSO		<b>AIR OPERATIONS BRANCH DIRECTOR</b>		PAUL BALFOUR
<b>5. Resources Assigned this Period</b>						
Strike Team / Task Force / Resource Designator		LWD	Leader	Number Persons	Drop Off PT./Time	Pick Up PT./Time
O-98 SOFR		09/12	CHRISTOPHER O'BRIEN	1	BASE CAMP/0600	BASE CAMP/1800
O-83 TFLD		09/10	ERIC METZGER	1	BASE CAMP/0600	BASE CAMP/1800
C-15 CRW1 PRESCOTT IHC		09/12	DARIN FISHER	23	BASE CAMP/0600	BASE CAMP/1800
C-5 CR2I GRAYBACK FORESTRY NCC 13B		09/15	DAVID BLANCO	18	BASE CAMP/0600	BASE CAMP/1800
E-97 CHP1 WYEAST FORESTRY MGMT		09/13	ERIK NELSON	3	BASE CAMP/0600	BASE CAMP/1800
E-12 UTV KD OUTDOORS			UNSTAFFED		BASE CAMP/0600	BASE CAMP/1800
E-27 AMB1 CASCADE MED TRANSPORT		09/13	BENJAMIN FLORES	2	BASE CAMP/0600	BASE CAMP/1800
O-96 EMPF MEDIC 4 FIRELINE MEDICS		09/18	MATT FREEBORN	1	BASE CAMP/0600	BASE CAMP/1800
<b>6. Control Operations/Work Assignments:</b>						
<p>TASK: Continue patrol on Road 4550, slopover west of H-10 and dozer line east of H-10. Back-haul excess equipment. Continue any suppression repair. Coordinate and shadow with High Desert Type 3 Team members.</p> <p>PURPOSE: Prevent fire growth that impacts private property, cultural and natural resources, and remaining timber stands within Summit Fire scar.</p> <p>END STATE: Fire is contained east of Road 45 and north of Road 4550</p>						
<b>7. Special Instructions:</b>						
Engines and tenders may NOT draft directly from natural water sources, such as creeks. Drafting will occur only from Fold-a-tanks.						
All resources check-in with DIVS when entering and leaving division.						
<b>8. Division/Group Communication Summary</b>						
Function	Channel	RX Frequency N/W	RX Tone/NAC	TX Frequency N/W	TX Tone/NAC	Mode
COMMAND	1	170.4250	131.8	168.0750	131.8	A
COMMAND	2	170.4125	131.8	165.9625	131.8	A
TACTICAL	4	168.0500	131.8	168.0500	131.8	A
AIR TO GROUND	13	167.0750		167.0750		A
<b>9. Prepared By (Resource Unit Leader)</b>			<b>Approved By (Planning Section Chief)</b>		<b>Date</b>	<b>Time</b>
MARGE HUCHINSON			JILL JOHNSON		09/09/2022	2000

**Division/Group Assignment List (ICS 204 WF)**  
**Controlled Unclassified Information//Basic**

<b>1. Incident Name:</b>			<b>3.</b>			
CROCKETS KNOB			<b>Branch:</b>		<b>Division/Group</b>	
<b>2. Operational Period:</b> DAY					E	
Date/Time From: 09/10/2022 0600 SAT		Date/Time To: 09/10/2022 1800 SAT				
<b>4. Operations Personnel</b>						
<b>OPERATIONS CHIEF</b>		TONY ENGEL JEROMY WILSON (T) KURT RANTA; CODY ACORD (T)		<b>DIVISION/GROUP SUPERVISOR</b>		JON STONELAKE
<b>SAFETY OFFICER</b>		JACK CATES TAIJASA CORSO		<b>AIR OPERATIONS BRANCH DIRECTOR</b>		PAUL BALFOUR
<b>5. Resources Assigned this Period</b>						
Strike Team / Task Force / Resource Designator		LWD	Leader	Number Persons	Drop Off PT./Time	Pick Up PT./Time
O-61.80 SOF2		09/10	PAUL BRNA	1	BASE CAMP/0600	BASE CAMP/1800
O-86 TFLD		09/12	NIC TURCO	1	BASE CAMP/0600	BASE CAMP/1800
C-9 CRW2 IRON MOUNTAIN FF		09/10	VICTOR CISNEROS	20	BASE CAMP/0600	BASE CAMP/1800
C-10 CRW2 CSR ENTERPR CRS3		09/10	JUBENCIO SALDANG	20	BASE CAMP/0600	BASE CAMP/1800
E-5 WTS2 45 CONTRACTING LLC		09/04	MIKE NAULT	1	BASE CAMP/0600	BASE CAMP/1800
E-113 WTS2 KING INC		09/15	DAVID SHEFFEL	1	BASE CAMP/0600	BASE CAMP/1800
E-114 WTS2 SAULS MOBILE WASH		09/13	WAYNE SAUL	1	BASE CAMP/0600	BASE CAMP/1800
E-17 DZR2 J & D LOGGING & CONTR **		09/05	JOHN SANOWSKI	2	BASE CAMP/0600	BASE CAMP/1800
O-122 REAF		09/13	SUSAN THEIS	1	BASE CAMP/0600	BASE CAMP/1800
O-175 REAF		09/20	JASON WRIGHT	1	BASE CAMP/0600	BASE CAMP/1800
O-179 REAF		09/20	DANIELLE MCCAULEY	1	BASE CAMP/0600	BASE CAMP/1800
O-181 REAF		09/20	ERIC MERTEN	1	BASE CAMP/0600	BASE CAMP/1800
O-95 EMPF EMPF ADVENTURE MEDICS		09/12	MICHAEL COOPER	1	BASE CAMP/0600	BASE CAMP/1800
E-87 REMS BLACKWOODS EMERG SVC		09/21	NICK BRUCKNER	4	BASE CAMP/0600	BASE CAMP/1800
<b>8. Division/Group Communication Summary</b>						
Function	Channel	RX Frequency N/W	RX Tone/NAC	TX Frequency N/W	TX Tone/NAC	Mode
COMMAND	1	170.4250	131.8	168.0750	131.8	A
COMMAND	2	170.4125	131.8	165.9625	131.8	A
TACTICAL	5	168.2000	131.8	168.2000	131.8	A
AIR TO GROUND	13	167.0750		167.0750		A
<b>9. Prepared By (Resource Unit Leader)</b>			<b>Approved By (Planning Section Chief)</b>		<b>Date</b>	<b>Time</b>
MARGE HUTCHINSON			JILL JOHNSON		09/09/2022	2000

## Division/Group Assignment List (ICS 204 WF)

Controlled Unclassified Information//Basic

<b>1. Incident Name:</b>			<b>3.</b>			
CROCKETS KNOB			<b>Branch:</b>		<b>Division/Group</b>  E	
<b>2. Operational Period: DAY</b>						
Date/Time From: 09/10/2022 0600 SAT		Date/Time To: 09/10/2022 1800 SAT				
<b>4. Operations Personnel</b>						
<b>OPERATIONS CHIEF</b>		TONY ENGEL JEROMY WILSON (T) KURT RANTA; CODY ACORD (T)		<b>DIVISION/GROUP SUPERVISOR</b>		JON STONELAKE
<b>SAFETY OFFICER</b>		JACK CATES TAIJASA CORSO		<b>AIR OPERATIONS BRANCH DIRECTOR</b>		PAUL BALFOUR
<b>5. Resources Assigned this Period</b>						
Strike Team / Task Force / Resource Designator		LWD	Leader	Number Persons	Drop Off PT./Time	Pick Up PT./Time
<b>6. Control Operations/Work Assignments:</b>						
<p>TASK: Patrol Road 45 and the spots over Road 45. Back-haul excess equipment. Continue any suppression repair. Coordinate and shadow with High Desert Type 3 Team members.</p> <p>PURPOSE: Prevent fire growth that impacts cultural and natural resources, remaining timber stands within the Summit Fire scar, and the Indian Rock Lookout</p> <p>END STATE: Fire is contained east of Road 45.</p>						
<b>7. Special Instructions:</b>						
<p>Engines and tenders may NOT draft directly from natural water sources, such as creeks. Drafting will occur only from Fold-a-tanks.</p> <p>** Resource will support IA as directed:</p> <ul style="list-style-type: none"> <li>· If Initial Attack occurs within the TFR, John Day Dispatch will coordinate with appropriate duty officer and contact Field Ops for response.</li> <li>· Field Operations will contact IA Group Supervisor and or Air Operations to coordinate response to new start.</li> <li>· Local forest Initial Attack frequencies will be used and provided in the IAP Communications Plan</li> <li>· The same process will be used for fires outside of TFR if assistance from Crockets Knob fire resources is requested.</li> </ul> <p>All resources check-in with DIVS when entering and leaving division.</p>						
<b>8. Division/Group Communication Summary</b>						
Function	Channel	RX Frequency N/W	RX Tone/NAC	TX Frequency N/W	TX Tone/NAC	Mode
COMMAND	1	170.4250	131.8	168.0750	131.8	A
COMMAND	2	170.4125	131.8	165.9625	131.8	A
TACTICAL	5	168.2000	131.8	168.2000	131.8	A
AIR TO GROUND	13	167.0750		167.0750		A
<b>9. Prepared By (Resource Unit Leader)</b>			<b>Approved By (Planning Section Chief)</b>		<b>Date</b>	<b>Time</b>
MARGE HUTCHINSON			JILL JOHNSON		09/09/2022	2000

**Division/Group Assignment List (ICS 204 WF)**  
**Controlled Unclassified Information//Basic**

<b>1. Incident Name:</b>			<b>3.</b>			
CROCKETS KNOB			<b>Branch:</b>		<b>Division/Group</b>	
<b>2. Operational Period: DAY</b>			G			
Date/Time From: 09/10/2022 0600 SAT		Date/Time To: 09/10/2022 1800 SAT				
<b>4. Operations Personnel</b>						
<b>OPERATIONS CHIEF</b>		TONY ENGEL JEROMY WILSON (T) KURT RANTA; CODY ACORD (T)		<b>DIVISION/GROUP SUPERVISOR</b>		DJ GOLDSMITH
<b>SAFETY OFFICER</b>		JACK CATES TAIJASA CORSO		<b>AIR OPERATIONS BRANCH DIRECTOR</b>		PAUL BALFOUR
<b>5. Resources Assigned this Period</b>						
Strike Team / Task Force / Resource Designator		LWD	Leader	Number Persons	Drop Off PT./Time	Pick Up PT./Time
O-61.80 SOF2		09/10	PAUL BRNA	1	BASE CAMP/0600	BASE CAMP/1800
O-156 HEQB		09/14	JAMES GOELLER	1	BASE CAMP/0600	BASE CAMP/1800
O-157 HEQB		09/15	MATTHEW JONES	1	BASE CAMP/0600	BASE CAMP/1800
O-158 HEQB(T)		09/14	TYLER TOMLINSON	1	BASE CAMP/0600	BASE CAMP/1800
E-144 ENG6 ENG 32 DARE ENTERPRISES		09/18	COOPER BERRY	3	BASE CAMP/0600	BASE CAMP/1800
E-6 WTT2 STORM CARPENTER		09/18	CUB CARPENTER	2	BASE CAMP/0600	BASE CAMP/1800
E-99 SMM3 JLC CONTRACTING 333G		09/13	BRYAN STAHANCYK	2	BASE CAMP/0600	BASE CAMP/1800
E-11 VUTV		09/06	UNSTAFFED		BASE CAMP/0600	BASE CAMP/1800
<b>6. Control Operations/Work Assignments:</b>						
<p>TASK: Complete final clean-up on the division. Continue any suppression repair. Coordinate and shadow with High Desert Type 3 Team members.</p> <p>PURPOSE: To establish secondary line of defense that would prevent impact to values if current primary lines are compromised.</p> <p>END STATE: Fire is contained east of Road 45 and identified values west of Road 10 are assessed and protected.</p>						
<b>7. Special Instructions:</b>						
All resources check-in with DIVS when entering and leaving division.						
<b>8. Division/Group Communication Summary</b>						
Function	Channel	RX Frequency N/W	RX Tone/NAC	TX Frequency N/W	TX Tone/NAC	Mode
COMMAND	1	170.4250	131.8	168.0750	131.8	A
COMMAND	2	170.4125	131.8	165.9625	131.8	A
COMMAND	3	171.5375	131.8	166.3625	131.8	A
TACTICAL	7	166.7250	131.8	166.7250	131.8	A
AIR TO GROUND	13	167.0750		167.0750		A
<b>9. Prepared By (Resource Unit Leader)</b>			<b>Approved By (Planning Section Chief)</b>		<b>Date</b>	<b>Time</b>
MARGE HUTCHINSON			JILL JOHNSON		09/09/2022	2000

**Division/Group Assignment List (ICS 204 WF)**  
**Controlled Unclassified Information//Basic**

<b>1. Incident Name:</b>			<b>3.</b>			
CROCKETS KNOB			<b>Branch:</b>		<b>Division/Group</b>	
<b>2. Operational Period: DAY</b>			<b>M</b>			
Date/Time From: 09/10/2022 0600 SAT		Date/Time To: 09/10/2022 1800 SAT				
<b>4. Operations Personnel</b>						
<b>OPERATIONS CHIEF</b>		TONY ENGEL JEROMY WILSON (T) KURT RANTA; CODY ACORD (T)		<b>DIVISION/GROUP SUPERVISOR</b>		BRAD BRYANT
<b>SAFETY OFFICER</b>		JACK CATES TAIJASA CORSO		<b>AIR OPERATIONS BRANCH DIRECTOR</b>		PAUL BALFOUR
<b>5. Resources Assigned this Period</b>						
Strike Team / Task Force / Resource Designator		LWD	Leader	Number Persons	Drop Off PT./Time	Pick Up PT./Time
O-99 SOFR		09/19	JEROME DRAZINSKI	1	BASE CAMP/0600	BASE CAMP/1800
C-4 CR2I GRAYBACK FORESTRY 13A		09/15	CHARLES COFMAN	20	BASE CAMP/0600	BASE CAMP/1800
C-27 CR2I WARM SPRINGS IHC #2 **		09/18	RACIN JOHNSON	19	BASE CAMP/0600	BASE CAMP/1800
C-28 CR2I GRAYBACK FORESTRY NCC 17B		09/18	GAVIN SAEMAN	20	BASE CAMP/0600	BASE CAMP/1800
O-143 FOBS		09/15	JOHN J QUINTANA	1	BASE CAMP/0600	BASE CAMP/1800
O-144 FOBS		09/15	DAVID A REYNOLDS	1	BASE CAMP/0600	BASE CAMP/1800
O-145 FOBS (T)		09/15	BRADLEY WALKER	1	BASE CAMP/0600	BASE CAMP/1800
O-202 REAF		09/22	JARED BOWMAN	1	BASE CAMP/0600	BASE CAMP/1800
E-14 UTV			UNSTAFFED		BASE CAMP/0600	BASE CAMP/1800
<b>6. Control Operations/Work Assignments:</b>						
<p>TASK: Continue mop-up east and south of Indian Rock Lookout. Backhaul excess equipment. Continue any suppression repair. Coordinate and shadow with High Desert Type 3 Team members.</p> <p>PURPOSE: Prevent long duration fire growth that impacts cultural and natural resource values, recreation sites, private property and Indian Rock Lookout.</p> <p>END STATE: Fire is contained north and west of Vinegar Hill Scenic area boundary and Road 020.</p>						
<b>7. Special Instructions:</b>						
Notify Operations of fire growth across the Princess Trail.						
<p>** Resource will support IA as directed:</p> <ul style="list-style-type: none"> <li>If Initial Attack occurs within the TFR, John Day Dispatch will coordinate with appropriate duty officer and contact Field Ops for response.</li> <li>Field Operations will contact IA Group Supervisor and or Air Operations to coordinate response to new start.</li> </ul>						
<b>8. Division/Group Communication Summary</b>						
Function	Channel	RX Frequency N/W	RX Tone/NAC	TX Frequency N/W	TX Tone/NAC	Mode
COMMAND	1	170.4250	131.8	168.0750	131.8	A
COMMAND	2	170.4125	131.8	165.9625	131.8	A
COMMAND	3	171.5375	131.8	166.3625	131.8	A
TACTICAL	6	168.6000	131.8	168.6000	131.8	A
AIR TO GROUND	13	167.0750		167.0750		A
<b>9. Prepared By (Resource Unit Leader)</b>			<b>Approved By (Planning Section Chief)</b>		<b>Date</b>	<b>Time</b>
MARGE HUTCHINSON			JILL JOHNSON		09/09/2022	2000

## Division/Group Assignment List (ICS 204 WF)

Controlled Unclassified Information//Basic

<b>1. Incident Name:</b>		<b>3.</b>	
CROCKETS KNOB		<b>Branch:</b>	<b>Division/Group</b>
<b>2. Operational Period:</b> <b>DAY</b>			
Date/Time From: 09/10/2022 0600                      SAT	Date/Time To: 09/10/2022 1800                      SAT	<b>M</b>	
<b>4. Operations Personnel</b>			
<b>OPERATIONS CHIEF</b>	TONY ENGEL JEREMY WILSON (T) KURT RANTA; CODY ACORD (T)	<b>DIVISION/GROUP SUPERVISOR</b>	BRAD BRYANT
<b>SAFETY OFFICER</b>	JACK CATES TAIJASA CORSO	<b>AIR OPERATIONS BRANCH DIRECTOR</b>	PAUL BALFOUR

**7. Special Instructions:**

- Local forest Initial Attack frequencies will be used and provided in the IAP Communications Plan
- The same process will be used for fires outside of TFR if assistance from Crockets Knob fire resources is requested.

All resources check-in with DIVS when entering and leaving division.

8. Division/Group Communication Summary						
Function	Channel	RX Frequency N/W	RX Tone/NAC	TX Frequency N/W	TX Tone/NAC	Mode
COMMAND	1	170.4250	131.8	168.0750	131.8	A
COMMAND	2	170.4125	131.8	165.9625	131.8	A
COMMAND	3	171.5375	131.8	166.3625	131.8	A
TACTICAL	6	168.6000	131.8	168.6000	131.8	A
AIR TO GROUND	13	167.0750		167.0750		A

<b>9. Prepared By (Resource Unit Leader)</b>	<b>Approved By (Planning Section Chief)</b>	<b>Date</b>	<b>Time</b>
MARGE HUTCHINSON	JILL JOHNSON	09/09/2022	2000

## Division/Group Assignment List (ICS 204 WF)

Controlled Unclassified Information//Basic

<b>1. Incident Name:</b>			<b>3.</b>				
CROCKETS KNOB			<b>Branch:</b>		<b>Division/Group</b>		
<b>2. Operational Period: DAY</b>							
Date/Time From: 09/10/2022 0600 SAT		Date/Time To: 09/10/2022 1800 SAT		<b>S / Z</b>			
<b>4. Operations Personnel</b>							
<b>OPERATIONS CHIEF</b>		TONY ENGEL JEROMY WILSON (T) KURT RANTA; CODY ACORD (T)		<b>DIVISION/GROUP SUPERVISOR</b>		LARRY LEACH	
<b>SAFETY OFFICER</b>		JACK CATES TAIJASA CORSO		<b>AIR OPERATIONS BRANCH DIRECTOR</b>		PAUL BALFOUR	
<b>5. Resources Assigned this Period</b>							
Strike Team / Task Force / Resource Designator		LWD	Leader		Number Persons	Drop Off PT./Time	Pick Up PT./Time
O-98 SOFR		09/12	CHRIS O'BRIEN		1	BASE CAMP/0600	BASE CAMP/1800
<b>6. Control Operations/Work Assignments:</b>							
<p>TASK: Monitor and patrol dozer line, Road 436 and Big Boulder Trail. Monitor uncontained fire edge in head of Boulder Creek. Coordinate and shadow with High Desert Type 3 Team members.</p> <p>PURPOSE: Prevent additional fire spread into Badger Creek that may have future impact to private property, cultural, natural and timber values.</p> <p>END STATE: Fire is contained east of Road 4550 and north of Badger Creek</p>							
<b>7. Special Instructions:</b>							
Engines and tenders may NOT draft directly from natural water sources, such as creeks. Drafting will occur only from Fold-a-tanks.							
All resources check-in with DIVS when entering and leaving division.							
<b>8. Division/Group Communication Summary</b>							
Function	Channel	RX Frequency N/W	RX Tone/NAC	TX Frequency N/W	TX Tone/NAC	Mode	
COMMAND	1	170.4250	131.8	168.0750	131.8	A	
COMMAND	2	170.4125	131.8	165.9625	131.8	A	
TACTICAL	8	166.7750	131.8	166.7750	131.8	A	
AIR TO GROUND	13	167.0750		167.0750		A	
<b>9. Prepared By (Resource Unit Leader)</b>			<b>Approved By (Planning Section Chief)</b>		<b>Date</b>	<b>Time</b>	
MARGE HUTCHINSON			JILL JOHNSON		09/09/2022	2000	



**Division/Group Assignment List (ICS 204 WF)**  
**Controlled Unclassified Information//Basic**

<b>1. Incident Name:</b>			<b>3.</b>			
CROCKETS KNOB			<b>Branch:</b>		<b>Division/Group</b>	
<b>2. Operational Period: DAY</b>			<b>CONTINGENCY</b>			
Date/Time From: 09/10/2022 0600 SAT		Date/Time To: 09/10/2022 1800 SAT				
<b>4. Operations Personnel</b>						
<b>OPERATIONS CHIEF</b>		TONY ENGEL JEROMY WILSON (T) KURT RANTA; CODY ACORD (T)		<b>DIVISION/GROUP SUPERVISOR</b>		EZRA BUTTERFIELD
<b>SAFETY OFFICER</b>		JACK CATES TAIJASA CORSO		<b>AIR OPERATIONS BRANCH DIRECTOR</b>		PAUL BALFOUR
<b>5. Resources Assigned this Period</b>						
Strike Team / Task Force / Resource Designator		LWD	Leader	Number Persons	Drop Off PT./Time	Pick Up PT./Time
E-7 DZR2 COUGAR RIDGE CONSTR D2		09/22	DAVE OAKS	2	BASE CAMP/0600	BASE CAMP/1800
E-13 VUTV KD OUTDOORS		09/06	UNSTAFFED		BASE CAMP/0600	BASE CAMP/1800
<b>6. Control Operations/Work Assignments:</b>						
<p>TASK: Prep Road 4560 system as a contingency line west of main fire.  PURPOSE: To establish secondary lines of defense that would prevent impact to values if current primary lines are compromised.  END STATE: Contingency lines identified and established if needed outside of primary containment lines.</p>						
<b>7. Special Instructions:</b>						
Engines and tenders may NOT draft directly from natural water sources, such as creeks. Drafting will occur only from fold-a-tanks.						
<b>8. Division/Group Communication Summary</b>						
Function	Channel	RX Frequency N/W	RX Tone/NAC	TX Frequency N/W	TX Tone/NAC	Mode
COMMAND	1	170.4250	131.8	168.0750	131.8	A
COMMAND	2	170.4125	131.8	165.9625	131.8	A
TACTICAL	7	166.7250	131.8	166.7250	131.8	A
AIR TO GROUND	13	167.0750		167.0750		A
<b>9. Prepared By (Resource Unit Leader)</b>			<b>Approved By (Planning Section Chief)</b>		<b>Date</b>	<b>Time</b>
MARGE HUTCHINSON			JILL JOHNSON		09/09/2022	2000

**Division/Group Assignment List (ICS 204 WF)**  
**Controlled Unclassified Information//Basic**

<b>1. Incident Name:</b>				<b>3.</b>		
CROCKETS KNOB				<b>Branch:</b>	<b>Division/Group</b>	
<b>2. Operational Period: DAY</b>						
Date/Time From: 09/10/2022 0600 SAT		Date/Time To: 09/10/2022 1800 SAT		<b>STRUCTURE / IA</b>		
<b>4. Operations Personnel</b>						
<b>OPERATIONS CHIEF</b>		TONY ENGEL JEROMY WILSON KURT RANTA; CODY ACORD (T)		<b>DIVISION/GROUP SUPERVISOR</b>		JIM WALKOWSKI
<b>SAFETY OFFICER</b>		JACK CATES TAIJASA CORSO		<b>AIR OPERATIONS BRANCH DIRECTOR</b>		PAUL BALFOUR
<b>5. Resources Assigned this Period</b>						
Strike Team / Task Force / Resource Designator		LWD	Leader	Number Persons	Drop Off PT./Time	Pick Up PT./Time
E-2 ENG4 GRAYBACK FORESTRY		09/18	JOHN RAY	3	BASE CAMP /0600	BASE CAMP/1800
E-135 ENG6 A1 FIRESTORM #06		09/21	NOAH LAFFERTY	3	BASE CAMP /0600	BASE CAMP/1800
E-136 ENG4 A A A THUNDERBOLT FIRE SERVICE		09/21	MONTIE REYNOLDS	3	BASE CAMP /0600	BASE CAMP/1800
E-137 ENG5 BLACKSTONE FORESTRY		09/19	CODY SUTTON	3	BASE CAMP /0600	BASE CAMP/1800
E-138 ENG6 GE FORESTRY		09/21	MINGUEL DURAN	3	BASE CAMP /0600	BASE CAMP/1800
E-139 ENG6 A A A THUNDERBOLT FIRE SERVICE		09/21	LOGAN CATES	3	BASE CAMP /0600	BASE CAMP/1800
E-91 WTS2 TRI-CO INC TENDER		09/18	DALE HUGHES	1	BASE CAMP /0600	BASE CAMP/1800
<b>6. Control Operations/Work Assignments:</b>						
<b>Structure Group:</b>						
TASK: Continue coordination with OSFM liaison and ODF to determine structure defense resources available. Coordinate and shadow with High Desert Type 3 Team members						
PURPOSE: To prepare structures and private property values along the Highway 20 and Road 10 corridors and in the vicinity of the fire to reduce impact from fire.						
END STATE: Structures and private property along the Hy 20 and Road 10 corridors and in the vicinity of the fire are assessed and defensible. Suppression activities to prevent fire impact to private property has occurred.						
<b>IA Group:</b>						
TASK: Follow IA response plan to provide IA response with identified resources for new fire starts within TFR						
PURPOSE: To support initial attack response capability for the Malheur and Umatilla NFs.						
END STATE: Prompt and efficient mobilization of identified IA resources to new fire starts.						
<b>7. Special Instructions:</b>						
<b>8. Division/Group Communication Summary</b>						
Function	Channel	RX Frequency N/W	RX Tone/NAC	TX Frequency N/W	TX Tone/NAC	Mode
COMMAND	1	170.4250	131.8	168.0750	131.8	A
COMMAND	2	170.4125	131.8	165.9625	131.8	A
COMMAND	10	172.4000	131.8	166.2000	123.0	A
TACTICAL	9	168.2500	131.8	168.2500	131.8	A
TACTICAL	11	168.3125	131.8	168.3125	131.8	A
AIR TO GROUND	12	167.3750		167.3750		A
AIR TO GROUND	13	167.0750		167.0750		A
<b>9. Prepared By (Resource Unit Leader)</b>			<b>Approved By (Planning Section Chief)</b>		<b>Date</b>	<b>Time</b>
MARGE HUTCHINSON			JILL JOHNSON		09/09/2022	2000

## Division/Group Assignment List (ICS 204 WF)

Controlled Unclassified Information//Basic

<b>1. Incident Name:</b>		<b>3.</b>	
CROCKETS KNOB		<b>Branch:</b>	<b>Division/Group</b>
<b>2. Operational Period: DAY</b>			
Date/Time From: 09/10/2022 0600	SAT	Date/Time To: 09/10/2022 1800	SAT
<b>4. Operations Personnel</b>			
<b>OPERATIONS CHIEF</b>	TONY ENGEL JEROMY WILSON KURT RANTA; CODY ACORD (T)	<b>DIVISION/GROUP SUPERVISOR</b>	JIM WALKOWSKI
<b>SAFETY OFFICER</b>	JACK CATES TAIJASA CORSO	<b>AIR OPERATIONS BRANCH DIRECTOR</b>	PAUL BALFOUR

**7. Special Instructions:**

- If Initial Attack occurs within the TFR, John Day Dispatch will coordinate with appropriate duty officer and contact Field Ops for response.
- Field Operations will contact IA Group Supervisor and or Air Operations to coordinate response to new start.
- Local forest Initial Attack frequencies will be used and provided in the IAP Communications Plan
- The same process will be used for fires outside of TFR if assistance from Crockets Knob fire resources is requested.

Engines and tenders may NOT draft directly from natural water sources, such as creeks. Drafting will occur only from Fold-a-tanks.

8. Division/Group Communication Summary						
---	--	--	--	--	--	--

Function	Channel	RX Frequency N/W	RX Tone/NAC	TX Frequency N/W	TX Tone/NAC	Mode
COMMAND	1	170.4250	131.8	168.0750	131.8	A
COMMAND	2	170.4125	131.8	165.9625	131.8	A
COMMAND	10	172.4000	131.8	166.2000	123.0	A
TACTICAL	9	168.2500	131.8	168.2500	131.8	A
TACTICAL	11	168.3125	131.8	168.3125	131.8	A
AIR TO GROUND	12	167.3750		167.3750		A
AIR TO GROUND	13	167.0750		167.0750		A

<b>9. Prepared By (Resource Unit Leader)</b>	<b>Approved By (Planning Section Chief)</b>	<b>Date</b>	<b>Time</b>
MARGE HUTCHINSON	JILL JOHNSON	09/09/2022	2000

**AIR OPERATIONS SUMMARY**

**PREPARED BY: Paul Balfour**

**PREPARED DATE/TIME: September 9, 1800hrs**

<b>INCIDENT NAME</b> Crockets Knob	<b>2. OPERATIONAL PERIOD:</b> Date: 9/10/2022      Helibase Start Time: 0800 End Time: 2000      Sunrise: 0627 Sunset: 1917 (Times valid for John Day PDT)
---------------------------------------	--

<p><b>3. REMARKS (Safety Notes, Hazards, Air Operations Special Equipment, etc.):</b> General Aviation, See &amp; Avoid YOU will be working in a complex fire environment, ensure YOU understand the Fire Traffic Area (FTA) Protocols. (12nm initial call, 7nm contact must be made prior to entering FTA)</p> <p>Bucket work, Retardant drops: ensure area is clear of ground personnel before dropping; watch for wires; be aware of potential for turbulence at ridge tops, saddles, canyons, etc *** BE AWARE OF FATIGUE, TAKE LONGER BREAKS WHEN FLYING IN SMOKEY CONDITIONS. *** Report all TFR intrusions to Air Operations, Air Support or Helibase as soon as possible.</p>	<p><b>4. MEDEVAC A/C:</b> Order thru ATGS or JDIDC <b>EMS Rotor A/G:</b> <b>VMED29 155.3475 Tx/Rx,</b> <b>Tone 156.7 Tx/Rx</b> 38HX COMM: A/A Primary A/G Primary</p>	<p><b>5.TFR #2/8108 (A74) &amp; 2/8109 (A75)</b> Surface to 11,000' MSL 7NM Radius</p>
---	---	--

6. PERSONNEL	LWD	Phone	7. FREQUENCIES			8. FIXED-WING	# Avail / Type/ Make-Model / FAA N# / Base(s)
			AIR/AIR Primary	AM	FM		
AOBD: Paul Balfour 9/10 O-61.43		509-993-8739	AIR/AIR Secondary	123.6250 (A8)		Fixed Wing/Buckets	DIVS order thru ATGS if up, or Communications
ASGS:			AIR/GRD Primary	128.2250 (A39)		ATGS Aircraft	LATs Order through Air Attack/AOBD Or JDIDC
HEBM: Tyler Davis (T) 9/14		360-220-5359	AIR/GRD Secondary		167.0750 (A11)	NOTES:	Grant Co Regional Airport, Haley Walker 541-575-1151 or 530-567-5987 email cost: <a href="mailto:jdairbase@gmail.com">jdairbase@gmail.com</a>
HEMG:			AIR/GRD IA Primary		169.7125 (A41)		
ATGS:			AIR/GRD IA Secondary		167.3750		
ATGS:			UNICOM	122.800			
JDIDC:		541-575-3110	DECK	163.1000			

**9. HELICOPTERS**

FAA N#	TY	MAKE/MODEL	BASE	START	AVAIL	REMARKS	FAA N#	TY	MAKE/MODEL	BASE	START	AVAIL	REMARKS
519FF	3	A Star B3	John Day	0800	0830	A-13, Out of Service, Mechanical	462WY	1	CH-46	John Day	0800	0830	A-7 Bucket
17HX	2	Bell 202++	John Day	0800	0830	A-102 Bucket/Helitack 10 personnel	83BH	1	UH-60	John Day	0800	0830	Bucket A-29

# INCIDENT RADIO COMMUNICATIONS PLAN (ICS 205)

Controlled Unclassified Information//Basic

<b>1. Incident Name:</b>	<b>2. Date/Time Prepared:</b>	<b>3. Operational Period:</b> DAY	
CROCKETS KNOB	Date: 09/09/2022 Time: 2000	Date/Time From: 09/10/2022 0600 SAT	Date/Time To: 09/10/2022 1800 SAT

**4. Basic Radio Channel Use:**

Zone Group	Ch #	Function	Channel Name/Trunked Radio System Talkgroup	Assignment	RX Freq	RX Tone/NAC	TX Freq	TX Tone/NAC	Mode (A,D, or M)	Remarks
	1	COMMAND	CMD 1	ALL DIVS	170.4250	131.8	168.0750	131.8	A	NORTH - INDIAN ROCK LO
	2	COMMAND	CMD 2	ALL DIVS	170.4125	131.8	165.9625	131.8	A	SOUTH - DIXIE BUTTE LO
	3	COMMAND	CMD 3	DIV G / M	171.5375	131.8	166.3625	131.8	A	N DESOLUTION BUTTE LO
	4	TACTICAL	TAC 4	DIV A	168.0500	131.8	168.0500	131.8	A	
	5	TACTICAL	TAC 5	DIV E	168.2000	131.8	168.2000	131.8	A	
	6	TACTICAL	TAC 6	DIV M	168.6000	131.8	168.6000	131.8	A	
	7	TACTICAL	TAC 7	DIV G / CONTING	166.7250	131.8	166.7250	131.8	A	DIVISION G / CONTINGENCY
	8	TACTICAL	TAC 8	DIV S / Z	166.7750	131.8	166.7750	131.8	A	DIVISION S / Z
	9	TACTICAL	TAC 9	STRUCTURE / IA	168.2500	131.8	168.2500	131.8	A	STRUCTURE / IA
	10	COMMAND	N DIXIE	ALL DIVS	172.4000	131.8	166.2000	123.0	A	IA / BACKUP IF CMD NET INOP
	11	TACTICAL	MAF TAC	IA	168.3125	131.8	168.3125	131.8	A	IA ONLY
	12	AIR TO GROUND	A/G 38	MALHEUR	167.3750		167.3750		A	A/G FOR MALHEUR N.F.
	13	AIR TO GROUND	A/G PRI	ALL DIVS	167.0750		167.0750		A	AIR OPS ONLY
	14	AIR TO GROUND	A/G SEC	ALL DIVS	169.7125		169.7125		A	AIR OPS ONLY
	15	AIR TO GROUND	VMED 29	ALL DIVS	155.3475	156.7	155.3475	156.7	A	MEDICAL EVAC ONLY
	16	AIR GUARD	AIRGUARD	ALL DIVS	168.6250		168.6250	110.9	A	EMERGENCY AIR OPS ONLY

**5. Special Instructions:** COMMUNICATIONS (208) 891-8093

<b>6. Prepared By</b> (Communications Unit Leader)	Name: MISSY PARKER	Signature: <i>Missy Parker</i>
ICS 205	IAP Page	Date/Time: 09/09/2022 2000

Controlled Unclassified Information//Basic

## RESOURCE ADVISOR MESSAGE ROAD REPAIR

Increased fire traffic can greatly impact a road's condition



Heavy equipment can damage culverts, cause drainage issues, and make roads unsafe to drive on.

Repair is often needed after a fire. Resource advisors document damage and work with equipment bosses to coordinate repair.

# THREE DAY DEMOB LIST

Saturday 9-10-22

## CREWS

C-9	1800	(CRW2)	IRON MOUNTAIN FIREFIGHTING
C-10	1830	(CRW2)	CSR ENTERPRISES, CRS3

## EQUIPMENT

E-39	0645	(ENG6)	BIGFOOT WILDFIRE
E-88	0715	(AMB2)	INJURY CARE EMERGENCY MEDICAL
E-4	0745	(ENG6)	GRAYBACK FORESTRY
E-45	0815	(WTS2)	LEONARD OSBURN
E-77	0845	(ENG6)	ENG #54 OREGON WOODS
E-79	0900	(ENG6)	HI COUNTRY LLC
E-115	0930	(MBM1)	BOULDER RIDGE
E-112	1000	(ENG6)	ENG 9262 ODF
E-60	1015	(WTS2)	ALL WET TRUCKING
E-61	1030	(WTS2)	ALL WET TRUCKING
E-48	1600	(REF1)	SPENCE INDUSTRIAL WILDFIRE LLC
E-49	1800	(STK2)	PRIME TME VIDEO STAKESIDE
E-51	1800	(AMB1)	VERDE VALLEY FD

## OVERHEAD

O-11	0600	(TFLD)	WINKLER, JOSHUA U
O-93	0615	(EMPF)	EMPF FRONT LINE EMS
O-9	0630	(SPT)	REMS - MODULE - RAPID EXTRACTION
O-94	0700	(EMPF)	MILLER, CHRISTIAN
O-7	0700	(EMTF)	ADVENTURE MEDICS
O-49	0715	(PIOF)	ACOSTA, JOSE R
O-94	0730	(EMPF)	MILLER, CHRISTIAN
O-110	0745	(PIO2)	WAGNER, TIMOTHY
O-83	1400	(TFLD)	METZGER, ERIC
O-150	1600	(INCM)	WILSON, TARA
O-55	1700	(HEQB)	BUTTERFIELD, EZRA
O-51	1800	(DIVS)	BRYANT, BRADLEY
O-59	1830	(TFLD)	STONELAKE, JON
O-61.8	1900	(HRSP)	MANEZES, SUSIE

Sunday 9-11-22

## EQUIPMENT

E-111	1200	(REF3)	REF3 - BOULDER RIDGE, LLC
-------	------	--------	---------------------------

### Crocketts Knob Fire DEMOB Procedures

1. Send in all CTRs to Finance the night before if possible to expedite process. Finance is located at ICP at Prairie City HS. Phone numbers are in IAP.
2. Return any checked-out equipment and/or radios to Supply and/or Commo.
3. All Contractors complete Ground Support inspection at Taylor Flats.
4. Proceed to the WEED WASH located just West of Prairie City– follow signs. It is open from 0600 to 2100 daily.
5. Complete the Finance process.
6. Contact DEMOB LAST at 509-432-6143 to finalize travel and release process.  
DEMOB Email: 2022.crockettsknob.demob@firenet.gov

**NOTE: All air travelers need to contact DEMOB to make arrangements 72 hours prior to departure.**



# **Crocketts Knob Fire Information 541-625-0892**



[2022.crockettsknob@firenet.gov](mailto:2022.crockettsknob@firenet.gov)

<https://www.facebook.com/CrockettsKnobFire>

<https://inciweb.nwccg.gov/incident/8355/>

## **Talking Points**

- The Crocketts Knob fire is being controlled using a Full Suppression Strategy with Public and Firefighter Safety and value protection as top priorities.
- Firefighters have been using mapping technology to accurately locate and identify structures, values, and hazards that may be impacted by the fire as well as landmarks that may be useful in fighting the fire.





# Human Resource Message

Susie Manezes, NW Team 12 HRSP Contact: 208-739-0255



## Crocketts Knob Fire - September 10, 2022

### Thank you for a job well done... and a few reminders:

- Thank you everyone for all your hard work and dedication in getting the fire under control and thank you for a job well done!
- As the teams' transition, communication is critical. Do not assume everyone is on the same page. Ask for clarification if directions are not clear. Be an active listener by paying full attention to what is being said. Focus!
- When you demob and begin your travel home, make sure you are rested. Drowsy driving poses a serious risk for you and others on the road. Sleepiness affects your ability to drive safely even if you do not fall asleep. Please try to rest up prior to traveling home.
- We are still on duty when in travel status and we are always in the public's eye so stay professional. Remember...Mutual Respect...You Make the Difference.
- FYI...Cycle Oregon bicyclists have a weeklong adventure through eastern Oregon. Those traveling home on Highway 126 will see bicyclists on the roadway. Bicyclists will be traveling from John Day to the Painted Hills, John Day Fossil Beds, and beyond so please pay attention to your speed.
- Thank you again for your food bank donations. Your contributions were greatly appreciated and all the donated food goes directly to the local community.



Quote for the day: "Any job very well done that has been carried out by a person who is fully dedicated is always a source of inspiration." -Carlos Ghosn



# **Logistics Message Crockets Knob Fire**

**ICP @ 740 Overholt St, Prairie City Oregon 97869**

**Lead Medical Unit Diana Braun Phone 509-348-0091 or by Radio on CMD Channel**

**Communications: Crockets Knob ICP**  
24-Hours  
Phone: **208-891-8093**

**Meal Service Hours:** Breakfast/Lunch at 0700  
Dinner at 1800

**\*\* Note:** Meal count changes need to be submitted to BCMG Tully Pritchett  
4 hours prior to delivery time.

**Shower Hours:** 0430 to 1200  
1400 to 2130

---

## **Taylor Flats Base Camp**

**4.5 miles North of Hwy 26 and Hwy 7 Junction on Hwy 7**

**Supply: 0630-2130**

All 'S'# orders

call or text Jeremy Marquardt at 360-880-4244

or

email [jeremy.marquardt@DNR.WA.GOV](mailto:jeremy.marquardt@DNR.WA.GOV)

**Meals:** Breakfast 0500-0900; Dinner 1800-2200

**Showers:** 0500-1200 and 1600-2200

**Ground Support:** 0600-2130

**Medical Support :** 0530-2130



# Finance Message



Finance Email: [2022.crocketsknob.finance@firenet.gov](mailto:2022.crocketsknob.finance@firenet.gov)

SUBJECT: Include Key Word **TIME** for Overhead, Crews & Cooperators

SUBJECT: Include Key Word **EQUIPMENT** for Contract Resources

Please Scan this QR code to send all required documents to finance or use the email below



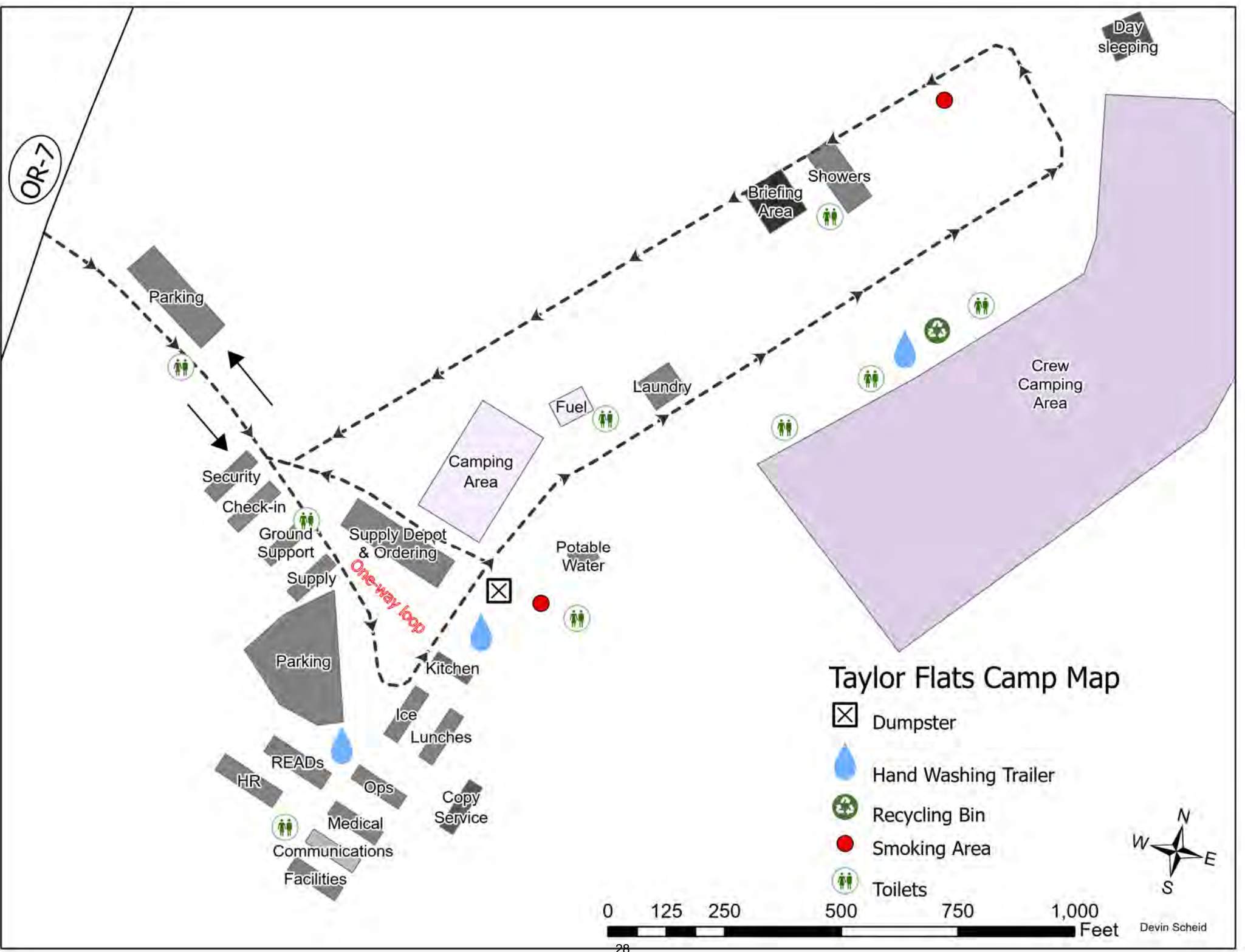
**FINANCE CHECK IN:** [2022.crocketsknob.finance@firenet.gov](mailto:2022.crocketsknob.finance@firenet.gov)

PLEASE ENSURE THE BELOW DOCUMENTS ARE EMAILED

Overhead, Crews & Cooperator Resources	Contract Resources
<ul style="list-style-type: none"> <li>• <b>Check-In:</b> Crew Manifest, Cooperative Agreement (if applies), AD Hire Letter, Resource Order</li> <li>• <b>Daily:</b> Crew Time Report (CTR), Shift Tickets</li> <li>• <b>Demob:</b> Signed OF288, Final Equipment Use Invoice (Cooperator) If you don't have a way to sign you must come to finance.</li> </ul>	<ul style="list-style-type: none"> <li>• <b>Check-In:</b> Resource Order, Contract/VIPR Agreement (make sure you have your UEI, Pre-Inspection</li> <li>• <b>Daily:</b> Shift Tickets, receipts (fuel issues, claims, etc.)</li> <li>• <b>Demob:</b> Contractor Evaluations, Final Shift Tickets and receipt(s) for Addition/Deductions, Post-Inspection, Final Signed Invoices If you don't have a way to sign you must come to finance</li> </ul>

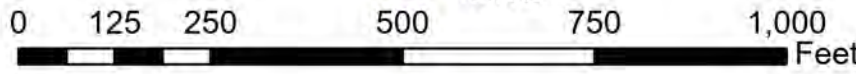
## REMINDERS

- ★ PLEASE ENSURE YOU INCLUDE LOCATION OF WHERE YOU ARE WORKING (BRANCH OR DIVISION) ON CTR OR SHIFT TICKET. MAKE SURE C OR E # IS ON THE CTR OR SHIFT TICKET
- ★ PLEASE SHOW YOUR LUNCH BREAK
- ★ PLEASE USE MILITARY TIME (0001-2400)
- ★ WHEN CLAIMING HAZARD PAY YOU MUST INCLUDE THE SUPPRESSION ACTION BEING PERFORMED. THIS INCLUDES OPERATIONS WHICH DIRECTLY SUPPORT CONTROL OF FIRE (E.G., ACTIVITIES TO EXTINGUISH THE FIRE, FIREFIGHTING, GROUND SCOUTING, SPOT FIRE PATROLLING, SEARCH AND RESCUE OPERATIONS, AND BACKFIRING).
- ★ WHEN SIGNING YOUR OF-288 or OF-286 PLEASE DO NOT LOCK IT or PROTECT THE SIGNATURE, WE HAVE TO BE ABLE TO SIGN IT AND SEND YOU A COPY



### Taylor Flats Camp Map

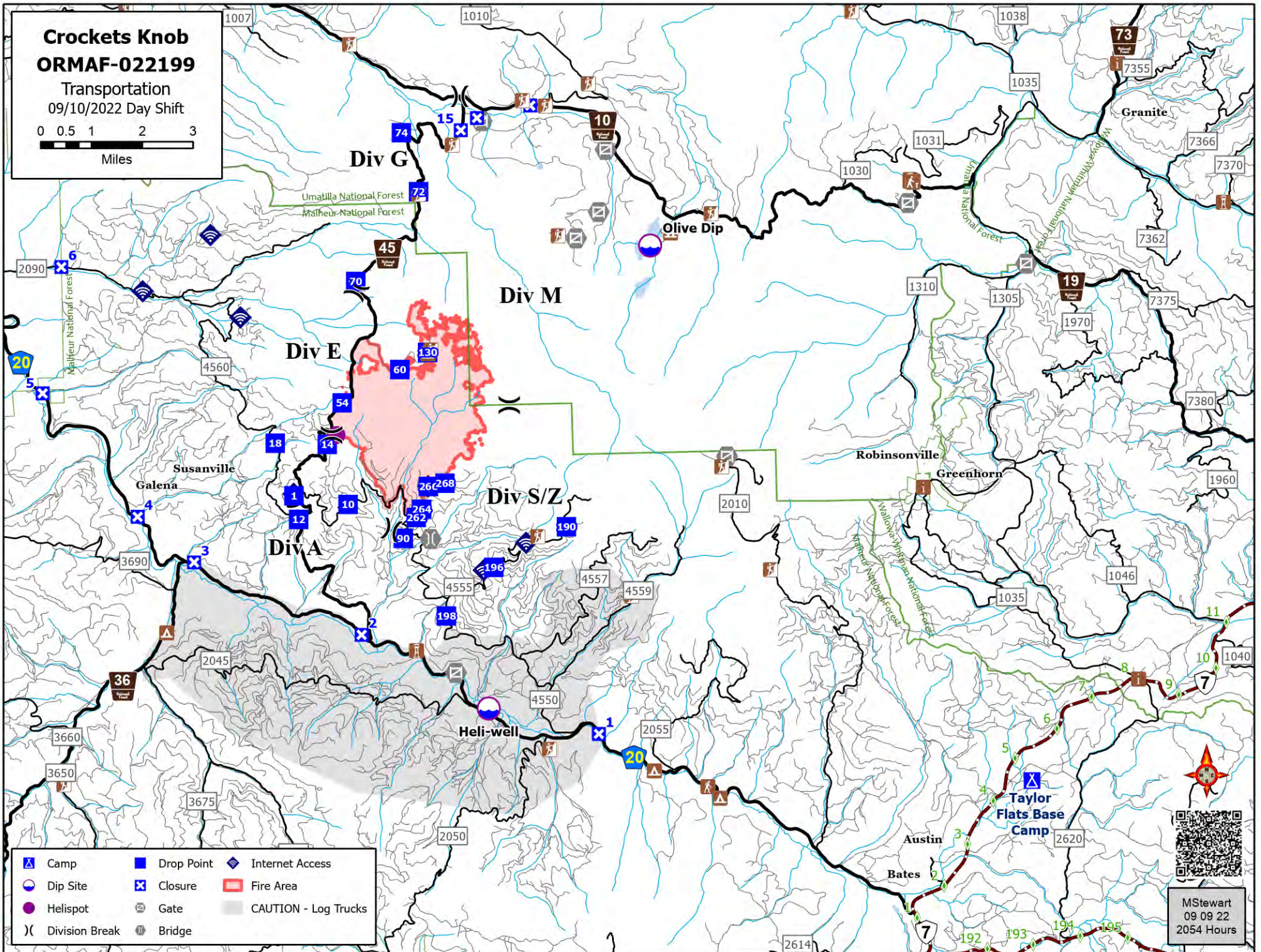
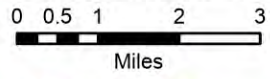
-  Dumpster
-  Hand Washing Trailer
-  Recycling Bin
-  Smoking Area
-  Toilets



Devin Scheid

# Crookets Knob ORMAF-022199

Transportation  
09/10/2022 Day Shift



- |                |            |                      |
|----------------|------------|----------------------|
| Camp           | Drop Point | Internet Access      |
| Dip Site       | Closure    | Fire Area            |
| Helispot       | Gate       | CAUTION - Log Trucks |
| Division Break | Bridge     |                      |



MStewart  
09 09 22  
2054 Hours

# Crocketts Knob ORMAF-022199 IAP Map

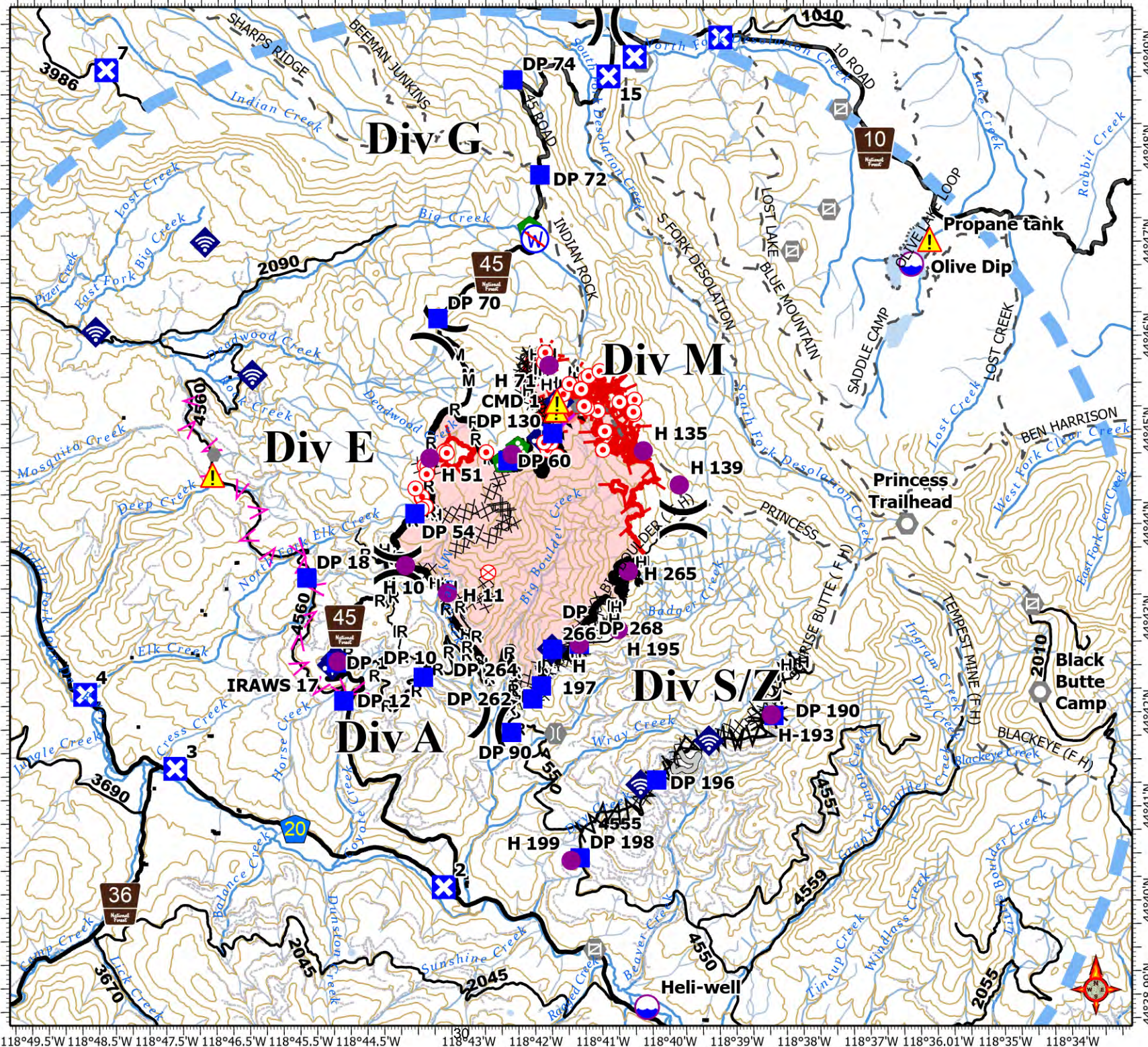
09/10/2022 Day Shift  
4331 acres at 09/08/2022 @ 2348

- Dip Site
- Hellspot
- Division Break
- Drop Point
- Closure
- Hot Spot - Spot Fire
- Fire Origin
- Other
- Landmark
- Gate
- Bridge
- Landing or Log Deck
- Culvert
- Mobile Weather Unit
- Internet Access
- Repeater
- Hazard
- Restricted Water Source
- Completed Dozer Line
- Completed Fuel Break
- Completed Hand Line
- Completed Mixed Construction Line
- Planned Fuel Break
- Access or Improved Road
- Other
- Retardant Drop
- Temporary Flight Restriction
- Fire Edge (Field Collection)
- Contained
- Uncontained
- Fire Area



S. Bushnell  
09 09 22  
2051 Hours

Acres from IR and GPS  
Datum: North American 1983



# Coordinate Table

FC Point Type	Label	Latitude WGS84 DDM	Longitude WGS84 DDM
Camp	Taylor Flats Base Camp	44° 37.492' N	118° 27.375' W
Closure		44° 49.242' N	118° 39.005' W
Closure		44° 49.050' N	118° 40.292' W
Closure	1	44° 38.473' N	118° 37.716' W
Closure	15	44° 48.847' N	118° 40.688' W
Closure	2	44° 40.261' N	118° 43.341' W
Closure	3	44° 41.562' N	118° 47.318' W
Closure	4	44° 42.362' N	118° 48.647' W
Closure	5	44° 44.507' N	118° 50.862' W
Closure	6	44° 46.660' N	118° 50.349' W
Closure	7	44° 48.997' N	118° 48.192' W
Closure	8	44° 51.052' N	118° 48.674' W
Dip Site	Heli-well	44° 39.010' N	118° 40.536' W
Dip Site	Olive Dip	44° 46.800' N	118° 36.206' W
Drop Point	DP 1	44° 42.662' N	118° 44.886' W
Drop Point	DP 10	44° 42.495' N	118° 43.594' W
Drop Point	DP 12	44° 42.257' N	118° 44.787' W
Drop Point	DP 130	44° 45.063' N	118° 41.604' W
Drop Point	DP 18	44° 43.570' N	118° 45.308' W
Drop Point	DP 190	44° 42.027' N	118° 38.372' W
Drop Point	DP 196	44° 41.363' N	118° 40.138' W
Drop Point	DP 198	44° 40.550' N	118° 41.299' W
Drop Point	DP 262	44° 42.246' N	118° 41.967' W
Drop Point	DP 264	44° 42.383' N	118° 41.834' W
Drop Point	DP 266	44° 42.770' N	118° 41.659' W
Drop Point	DP 268	44° 42.820' N	118° 41.260' W
Drop Point	DP 54	44° 44.234' N	118° 43.682' W
Drop Point	DP 60	44° 44.781' N	118° 42.280' W
Drop Point	DP 70	44° 46.303' N	118° 43.291' W
Drop Point	DP 72	44° 47.813' N	118° 41.733' W
Drop Point	DP 74	44° 48.828' N	118° 42.114' W
Drop Point	DP 90	44° 41.893' N	118° 42.291' W
Helibase		44° 24.076' N	118° 57.727' W
Helispot	H-193	44° 42.035' N	118° 38.409' W
Helispot	H 10	44° 43.684' N	118° 43.835' W
Helispot	H 11	44° 43.387' N	118° 43.214' W
Helispot	H 135	44° 44.863' N	118° 40.257' W
Helispot	H 139	44° 44.494' N	118° 39.727' W
Helispot	H 15	44° 42.675' N	118° 44.864' W
Helispot	H 195	44° 42.968' N	118° 40.675' W
Helispot	H 197	44° 42.820' N	118° 41.260' W
Helispot	H 199	44° 40.523' N	118° 41.434' W
Helispot	H 265	44° 43.588' N	118° 40.508' W
Helispot	H 51	44° 44.821' N	118° 43.445' W
Helispot	H 59	44° 44.848' N	118° 42.216' W
Helispot	H 71	44° 45.787' N	118° 41.642' W
Incident Command Post	Prairie City	44° 27.285' N	118° 42.554' W
Internet Access		44° 42.720' N	118° 41.769' W
Internet Access		44° 42.698' N	118° 44.894' W
Internet Access		44° 41.317' N	118° 40.378' W
Internet Access		44° 41.771' N	118° 39.349' W
Internet Access		44° 45.733' N	118° 46.076' W
Internet Access		44° 47.152' N	118° 46.753' W
Internet Access		44° 46.215' N	118° 48.406' W
Landing or Log Deck		44° 44.916' N	118° 42.128' W
Landing or Log Deck		44° 44.782' N	118° 42.339' W

<b>UNIT LOG</b>		1. Incident Name	2. Date Prepared	3. Time Prepared
4. Unit Name/Designators		5. Unit Leader (Name and Position)	6. Operational Period	
<b>7. Personnel Roster Assigned</b>				
Name		ICS Position	Home Base	
<b>8. Activity Log</b>				
Time		Major Events		
9. Prepared by (Name and Position)				



## COVID-19 Mitigations for Crockets Knob Fire

- Masks are not required indoors unless working in a county with a HIGH COVID-19 community level. Currently, Grant County community level is MODERATE (masking indoors is optional).
- Conduct daily verbal screening checks within crews, report any COVID-like symptoms to your direct supervisor. Supervisors should report any positive symptoms to the Medical Unit for next steps.
- Observe social distancing standards while waiting in line for food and limit contact with others outside of your crew in the food service line. If possible, send crew representatives to pick up meals.
- Practice good personal hygiene, wash hands frequently and disinfect high-traffic areas on a regular basis.
- Limit close contact between firefighters and the public as much as possible to prevent exposure and spread.





# EMERGENCY PLAN INCIDENT WITHIN AN INCIDENT

## ON SCENE INCIDENT COMMANDER

In the event of an accident or medical incident of any size, your primary responsibility is to ENSURE that the victim(s) receive prompt and effective Triage, Treatment, Extrication and Transport.

- **ENSURE THE MEDICAL INCIDENT REPORT IN THE INCIDENT ACTION PLAN IS BEING USED AND FOLLOWED- \*IF DETERMINED TO BE A GREEN, DO NOT DECLARE EMERGENCY TRAFFIC AND ONLY COMPLETE LINE 1-4 ON MIR\*.**
- Conduct size-up of the incident nature of accident, number type of resources involved, latitude and longitude location (DD°MMM.MM format): notify incident communications center and supervisor, request assistance as needed.
- Order and coordinate medical and support response to the accident.
- Evaluate special needs (law enforcement, haz mat, etc.).
- Clear the command frequency if medical emergency, coordinate with incident communications and air attack for air medical transportation needs.
- Preserve and photograph the scene for accident investigation.
- Remain aware of surroundings and the status of the main incident (delegate personnel to monitor the main fire) to ensure safety of medical treatment personnel.
- Until relieved, supervise and manage all personnel involved at the incident scene.

# MEDICAL PLAN (ICS 206 WF)

Incident/Project Name		1. Operational Period						
Crockets Knob		September 10, 2022 0600-1800						
2. Ambulance Services								
Name	Complete Address	Phone	Advanced Life Support (ALS)					
			Yes	No				
Blue Mountain Ambulance	170 Ford Rd John Day, OR	Command/911	X					
3. Air Ambulance Services								
Name	Phone	Location						
Life Flight Network	Command/911	20-30 min flight - LaGrande, OR						
Life Flight Network	Command/911	Pendleton, OR						
4. Hospitals								
Name Complete Address	Coordinate Standard Degrees Decimal Minutes DD° MM.MMM' N - Lat DD° MM.MMM' W - Long		Travel Time From Crockett's Knob Air Gnd		Phone	Helipad Yes No		Level of Care Facility
	Lat:	Long:						
Blue Mountain Hospital 170 Ford Rd John Day, OR	44°25.06' N	118°57.60' W	20 mins	1.5 hrs	541-575-1311	X		Level 4
St Charles Medical Center 2500 NE Neff Rd Bend, OR	44°4.1667' N	121°16.0833' W	1 hr	4 hrs	541-882-6311	X		Level 2
Legacy Emanuel 2801 N Gantenbien, Portland, OR	45°32.616' N	122°6695' W	2 hrs	5 hrs	503-413-4321	X		Level 1 Trauma Burn Center
St Alphonsus Medical Center 3325 Pocahontas Rd Baker City, OR	44°47.6898' N	117°50.7684' W	45 mins	1.75 hrs	541-523-6461	X		Level 2
5. Division Branch Group	Capability			Personnel				
Div. A				(E-27) Ambo 1 (O-96) Medic 4 - Roaming				
Div. E				(O-95) Medic 3 - Roaming (E-87) Blackwood's REM				
Div. M				Utilize Nearest Medical Resources				
Div. S/Z								
Div. G								
Contingency								
6. Prepared By (Medical Unit Leader)		7. Date/Time	8. Reviewed By (Safety Officer)			9. Date/Time		
Diana Braun		09/09/2022 1800	Jack Cates <i>Jack Cates</i>			09/09/2022 1800		

# Short-Haul Operations

## CAPABILITIES

- During an operational Short-Haul the helicopter is capable of inserting Short-Haulers into an area with tight canopy cover and/or technical terrain.
- Haul line lengths range from 100 feet to 350 feet.
- Short hauler and/or medical gear can be delivered to the medical scene even if extraction by short-haul is not necessary.

## ORDERING

- EMT or Medical Incident IC determines medical extraction is required.
- Follow local established procedures and/or Medical Incident Report (MIR) in the IRPG.
- Confirm aircraft type, call sign, estimated time of arrival and frequency.
- Give site selection information when ordering: hazards (i.e. ash, smoke, snags, aerial), tree height, terrain, and patient transport configuration (supine or seated position). Repeat hazards and give updated weather conditions as well as brief patient update to responding helicopter.

**PROCESS:** The helicopter will fly to the coordinates provided. They will make contact with ground personnel on scene with the patient using an identified air-to-ground frequency. The helicopter will complete a short-haul recon and size up, gather patient update information and then fly to a landing zone (LZ) to configure for short-haul operations. The helicopter will be monitoring the appropriate air-to-ground, air guard and victor frequencies. From this point, ground resources should only contact the helicopter in case of an emergency. During the insertion and extraction process ground personnel must be clear of the area.

## ON SCENE: EXPECT THE FOLLOWING

- 1 or 2 rescuers (at least one qualified as an EMT or higher)
- Backboard (if needed and not already on scene)
- All equipment necessary for patient extraction

The Patient Extraction Bag accommodates most backboards.  
-A patient on a backboard, TRS, SKED or litter will be inserted into the bag.



The Seat Harness is used for patients not requiring the use of a backboard.



IAP INSERT

# MEDICAL PLAN (ICS 206 WF)

Controlled Unclassified Information//Basic

## Medical Incident Report

**FOR A NON-EMERGENCY INCIDENT, WORK THROUGH CHAIN OF COMMAND TO REPORT AND TRANSPORT INJURED PERSONNEL AS NECESSARY.**

**FOR A MEDICAL EMERGENCY: IDENTIFY ON SCENE INCIDENT COMMANDER BY NAME AND POSITION AND ANNOUNCE "MEDICAL EMERGENCY" TO INITIATE RESPONSE FROM IMT COMMUNICATIONS/DISPATCH.**

Use the following items to communicate situation to communications/dispatch.

1. CONTACT COMMUNICATIONS / DISPATCH (**Verify correct frequency prior to starting report**)

*Ex: "Communications, Div. Alpha. Stand-by for Emergency Traffic."*

2. INCIDENT STATUS: *Provide incident summary (including number of patients) and command structure.*

*Ex: "Communications, I have a Red priority patient, unconscious, struck by a falling tree. Requesting air ambulance to Forest Road 1 at (Lat./Long.) This will be the Trout Meadow Medical, IC is TFLD Jones. EMT Smith is providing medical care."*

Severity of Emergency / Transport Priority	<input type="checkbox"/> RED / PRIORITY 1 Life or limb threatening injury or illness. Evacuation need is IMMEDIATE <i>Ex: Unconscious, difficulty breathing, bleeding severely, 2° – 3° burns more than 4 palm sizes, heat stroke, disoriented.</i> <input type="checkbox"/> YELLOW / PRIORITY 2 Serious Injury or illness. Evacuation may be DELAYED if necessary. <i>Ex: Significant trauma, unable to walk, 2° – 3° burns not more than 1-3 palm sizes.</i> <input type="checkbox"/> GREEN / PRIORITY 3 Minor Injury or illness. Non-Emergency transport <i>Ex: Sprains, strains, minor heat-related illness.</i>	
Nature of Injury or Illness & Mechanism of Injury		<i>Brief Summary of Injury or Illness (Ex: Unconscious, Struck by Falling Tree)</i>
Transport Request		<i>Air Ambulance / Short Haul/Hoist Ground Ambulance / Other</i>
Patient Location		<i>Descriptive Location &amp; Lat. / Long. (WGS84)</i>
Incident Name		<i>Geographic Name + "Medical" (Ex: Trout Meadow Medical)</i>
On-Scene Incident Commander		<i>Name of on-scene IC of Incident within an Incident (Ex: TFLD Jones)</i>
Patient Care		<i>Name of Care Provider (Ex: EMT Smith)</i>

3. INITIAL PATIENT ASSESSMENT: *Complete this section for each patient as applicable (start with the most severe patient)*

Patient Assessment: See IRPG page 106

Treatment:

4. TRANSPORT PLAN:

Evacuation Location (if different): *(Descriptive Location (drop point, intersection, etc.) or Lat. / Long.)* Patient's ETA to Evacuation Location:

Helispot / Extraction Site Size and Hazards:

5. ADDITIONAL RESOURCES / EQUIPMENT NEEDS:

*Example: Paramedic/EMT, Crews, Immobilization Devices, AED, Oxygen, Trauma Bag, IV/Fluid(s), Splints, Rope rescue, Wheeled litter, HAZMAT, Extrication*

6. COMMUNICATIONS: Identify State Air/Ground EMS Frequencies and Hospital Contacts as applicable

Function	Channel Name/Number	Receive (RX)	Tone/NAC *	Transmit (TX)	Tone/NAC *
COMMAND					
AIR-TO-GRND					
TACTICAL					

7. CONTINGENCY: **Considerations:** *If primary options fail, what actions can be implemented in conjunction with primary evacuation method? Be thinking ahead.*

8. ADDITIONAL INFORMATION: *Updates/Changes, etc.*

**REMEMBER:** Confirm ETA's of resources ordered. Act according to your level of training. Be Alert. Keep Calm. Think Clearly. Act Decisively.

Controlled Unclassified Information//Basic