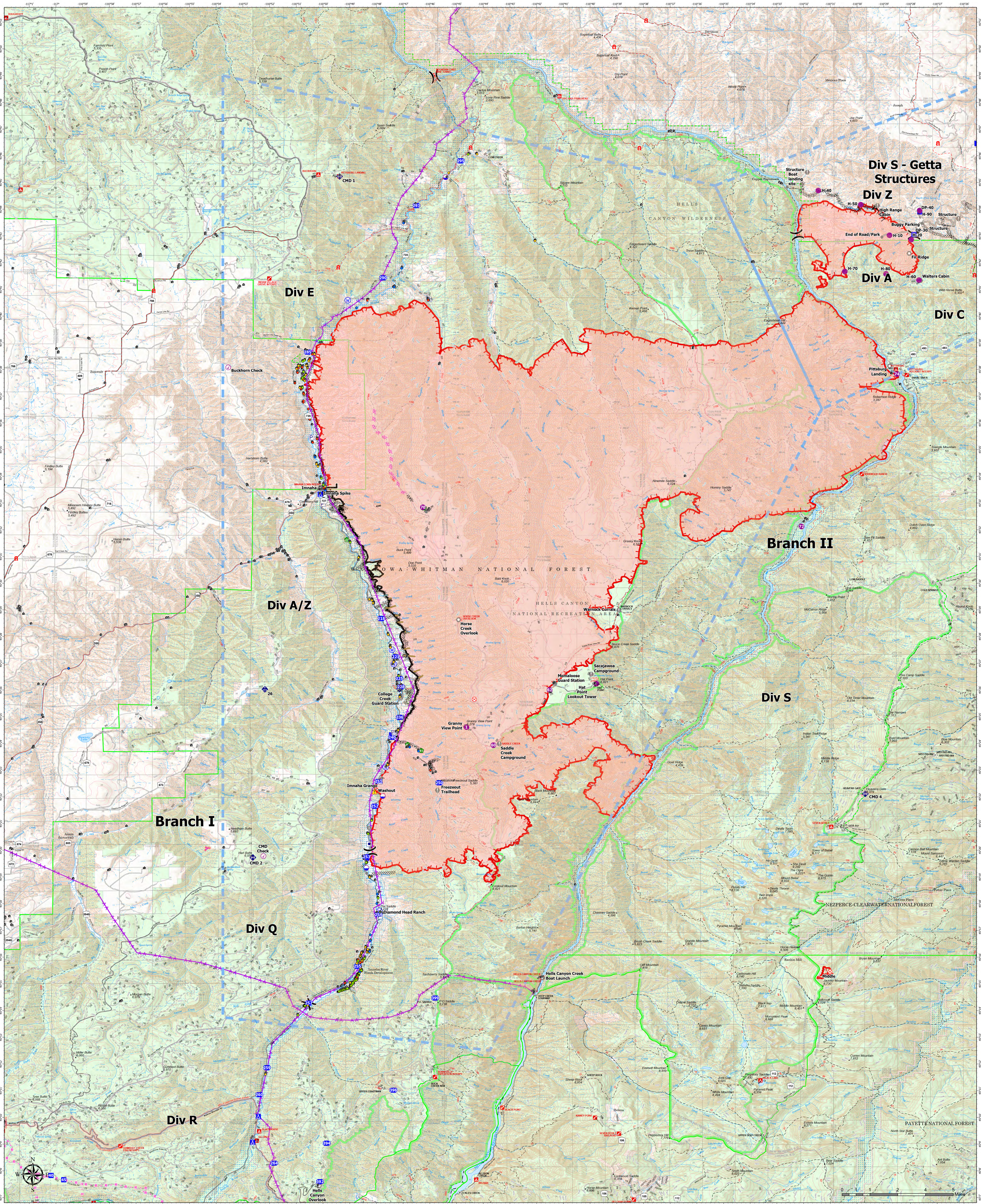


Structure Operations



Double Creek 9/10/2022 Day



OR-WWF-000400
142,791 acres at 9/9/22 1152

- | | | | | | | | | | | |
|---|--|--|---|--|--|--|--|---|---|---|
| <ul style="list-style-type: none"> Structures Label Point Other Property Pump | <ul style="list-style-type: none"> Water Tank Aviation Check Point Dip Site Heliport | <ul style="list-style-type: none"> Division Break Branch Break Staging Area Drop Point Close | <ul style="list-style-type: none"> Camp Fire Origin Value at Risk | <ul style="list-style-type: none"> Other Landmark Bridge Water Development or Draft Site | <ul style="list-style-type: none"> Structure Wrap Resource Location Repair Point Fence - Cut/Damaged | <ul style="list-style-type: none"> Dozer Path Clean Up Area Mobile Weather Unit Repeater | <ul style="list-style-type: none"> Hazard Water Source Completed Burnout | <ul style="list-style-type: none"> Completed Hand Line Access or Improved Road Planned Dozer Line Planned Hand Line Aerial Hazard | <ul style="list-style-type: none"> Planned Road as Line Retardant Drop Temporary Flight Restriction Contained Uncontained | <ul style="list-style-type: none"> Stand Alone (0-2) Prep & Hold (3-5) Prep & Go (6-8) Non-Defensible Rescue / Drive By (>9) |
|---|--|--|---|--|--|--|--|---|---|---|

