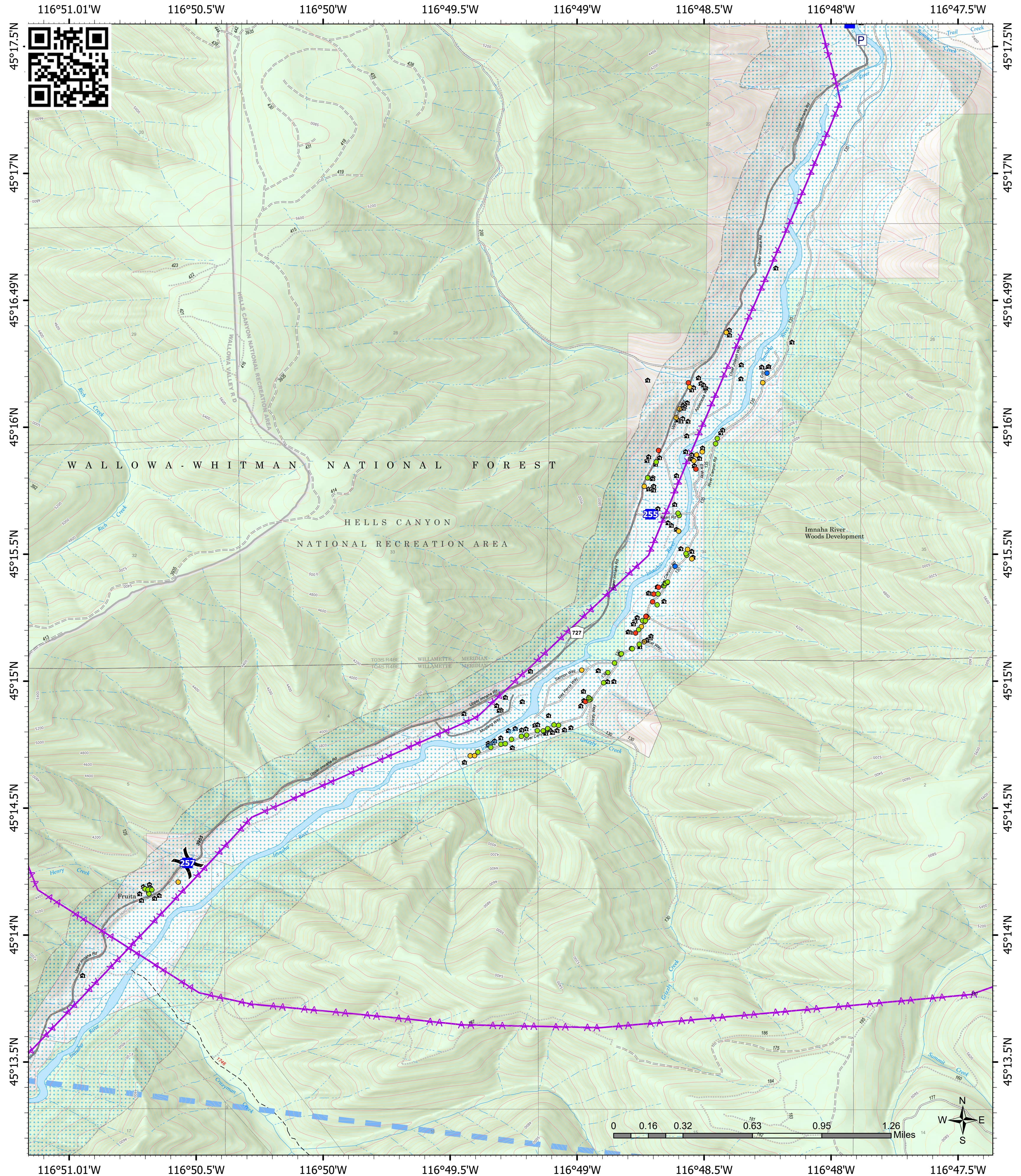


# Structure Operations



# Double Creek 9/10/2022 Day



**OR-WWF-000400**  
**142,791 acres at 9/9/22 1152**

Structures	Drop Point
Division Break	

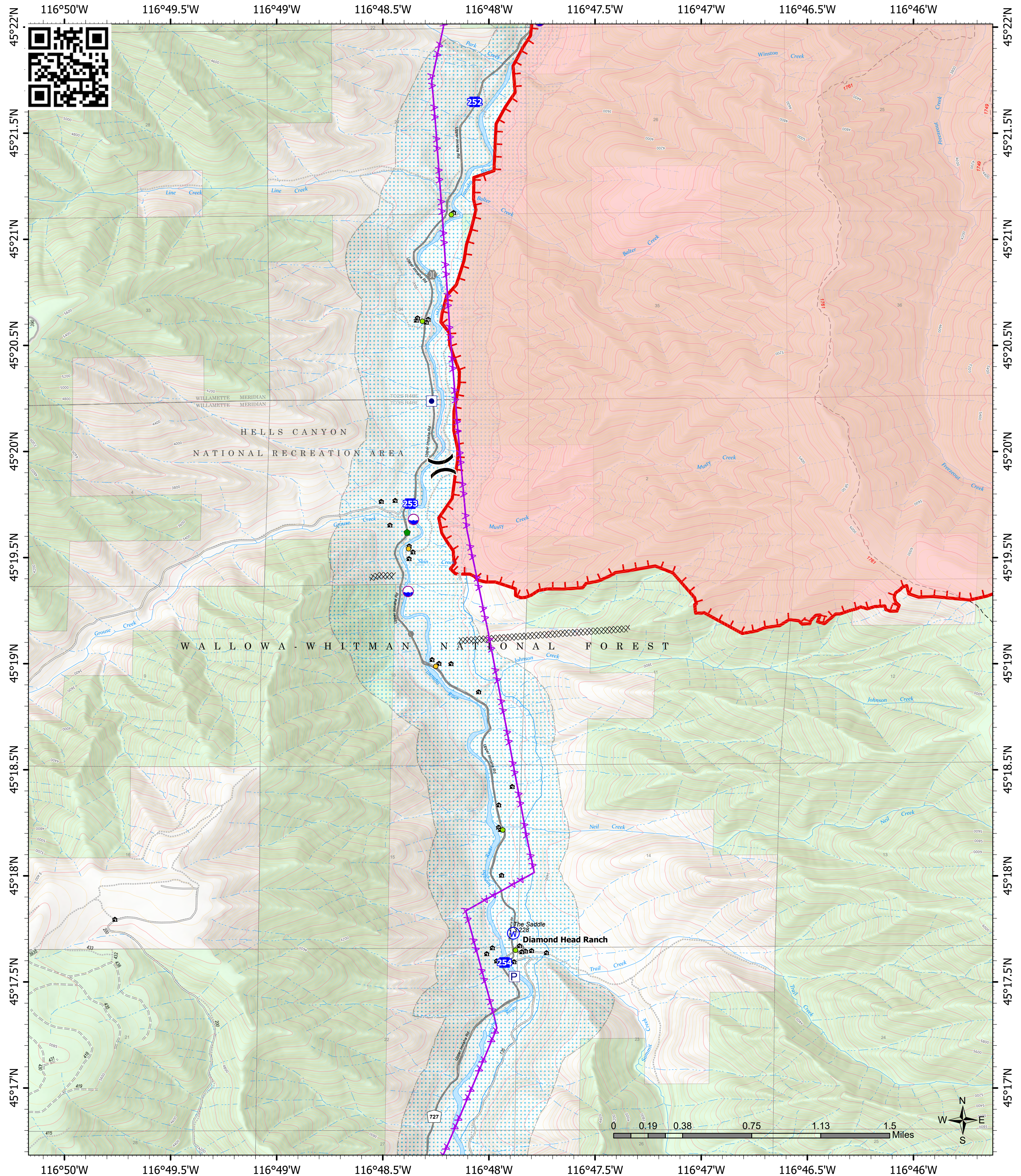
Stand Alone (0 - 2)
Prep & Hold (3 - 5)
Prep & Go (6 - 8)
NonDefensible - Rescue / Drive By (>9)



# Structure Operations



**Double Creek 9/10/2022 Day**



**OR-WWF-000400**  
**142,791 acres at 9/9/22 1152**

Structures	Drop Point	Repair Point
Dip Site	Other	Water Source
Division Break	Landmark	Wildfire Daily Fire Perimeter
Bridge		

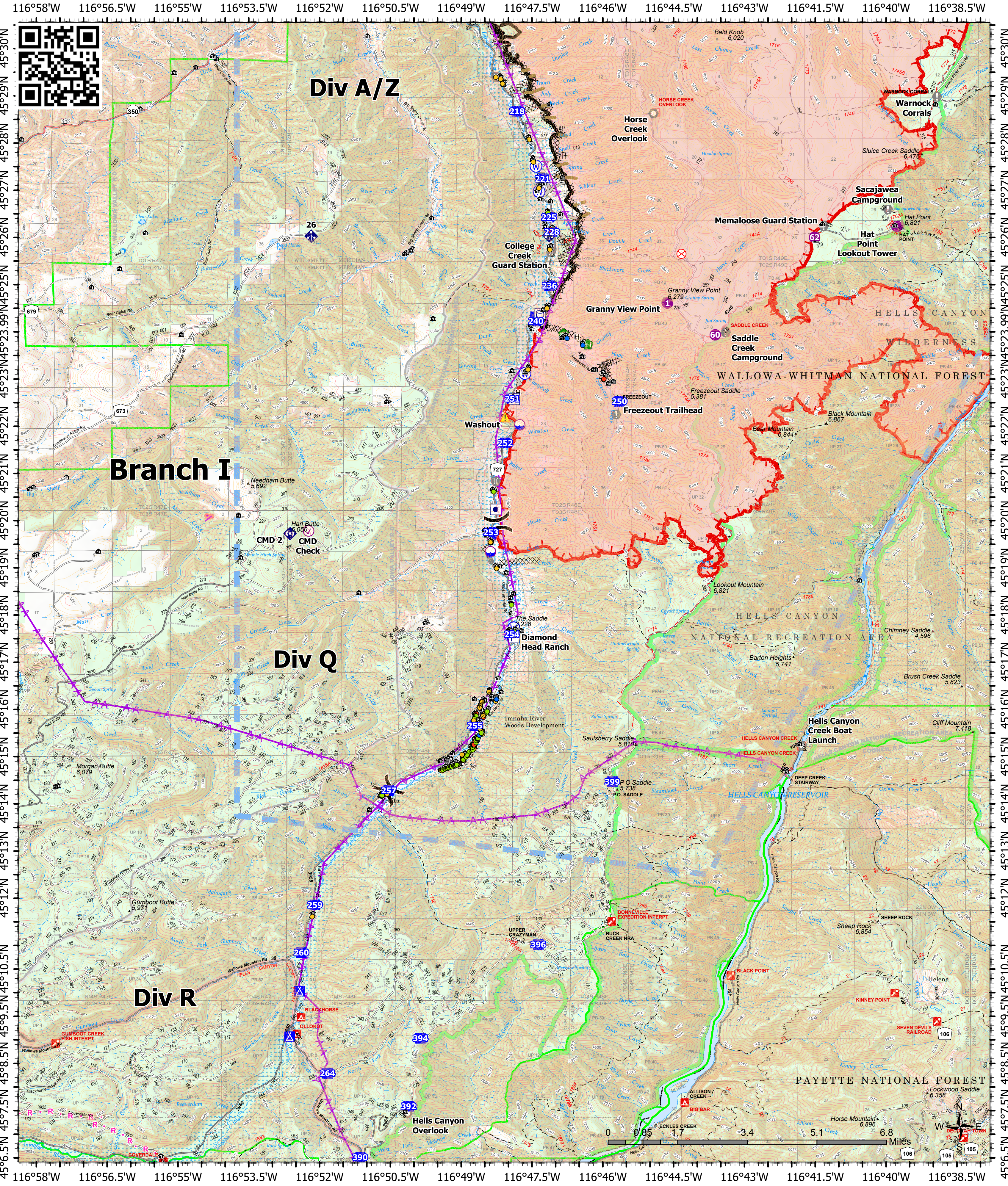
Stand Alone (0 - 2)
Prep & Hold (3 - 5)
Prep & Go (6 - 8)
NonDefensible - Rescue / Drive By (>9)



# Structure Operations



# Double Creek 9/10/2022 Day



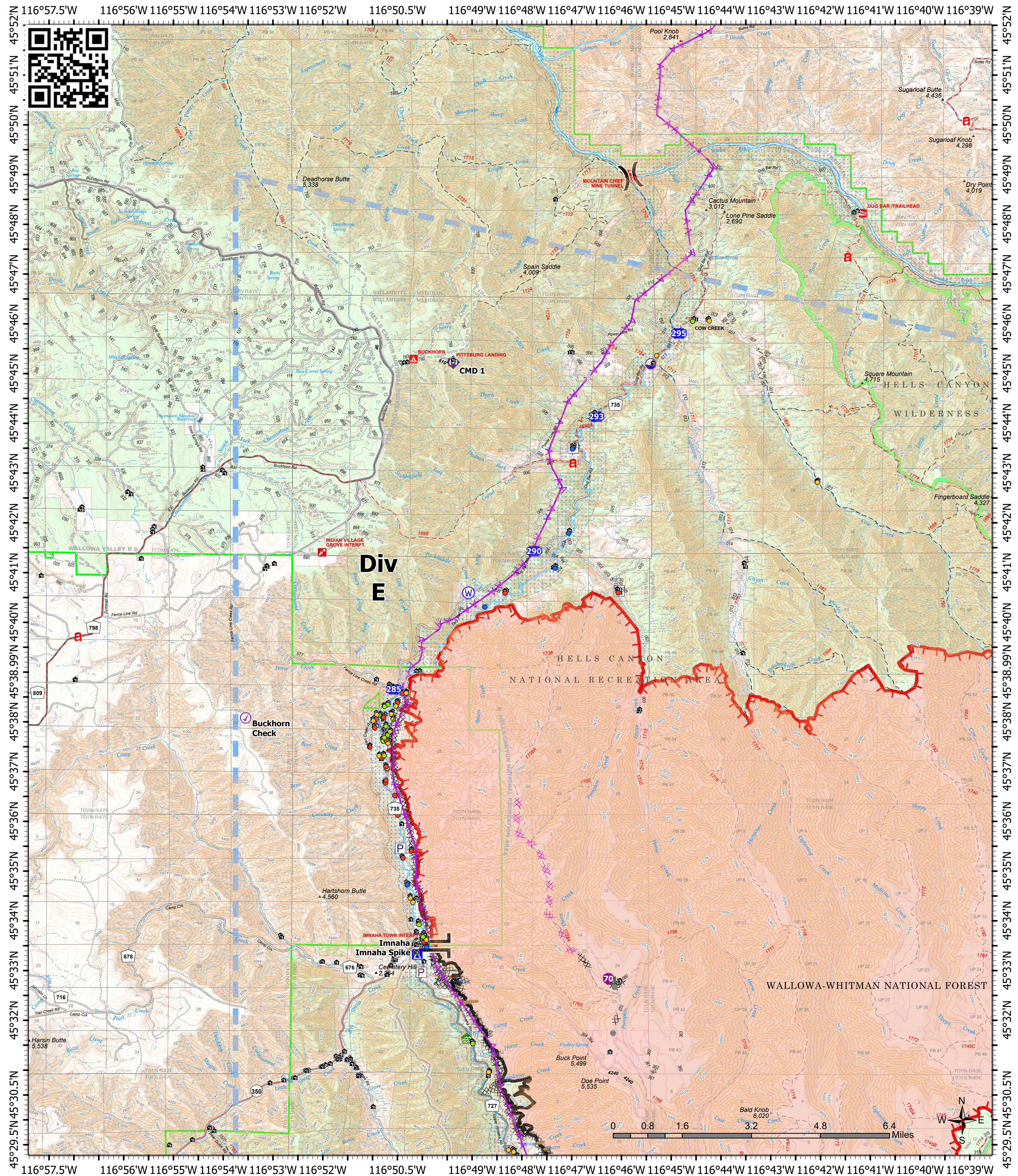
<b>OR-WWF-000400</b>		Structures	Division Break	Value at Risk	Structure Wrap	Clean Up Area	Stand Alone (0 - 2)
<b>142,791 acres at 9/9/22 1152</b>		Aviation Check Point	Drop Point	Other	Resource Location	Mobile Weather Unit	Prep & Hold (3 - 5)
	Dip Site	Camp	Landmark	Repair Point	Repeater	Prep & Go (6 - 8)	NonDefensible - Rescue / Drive By (>9)
	Helispot	Fire Origin	Bridge	Fence - Cut/Damaged	Hazard		



# Structure Operations



# Double Creek 9/10/2022 Day



<b>OR-WWF-000400</b>		142,791 acres at 9/9/22 1152	
	Structures		Division Break
	Aviation Check Point		Branch Break
	Dip Site		Drop Point
	Helispot		Closure
	Camp		Bridge
	Value at Risk		Water Development or Draft Site
	Other		Fence - Cut/Damaged
	Landmark		Dozer Push
	Stand Alone (0 - 2)		Prep & Hold (3 - 5)
	Prep & Go (6 - 8)		Non-Defensible - Rescue / Drive By (>9)