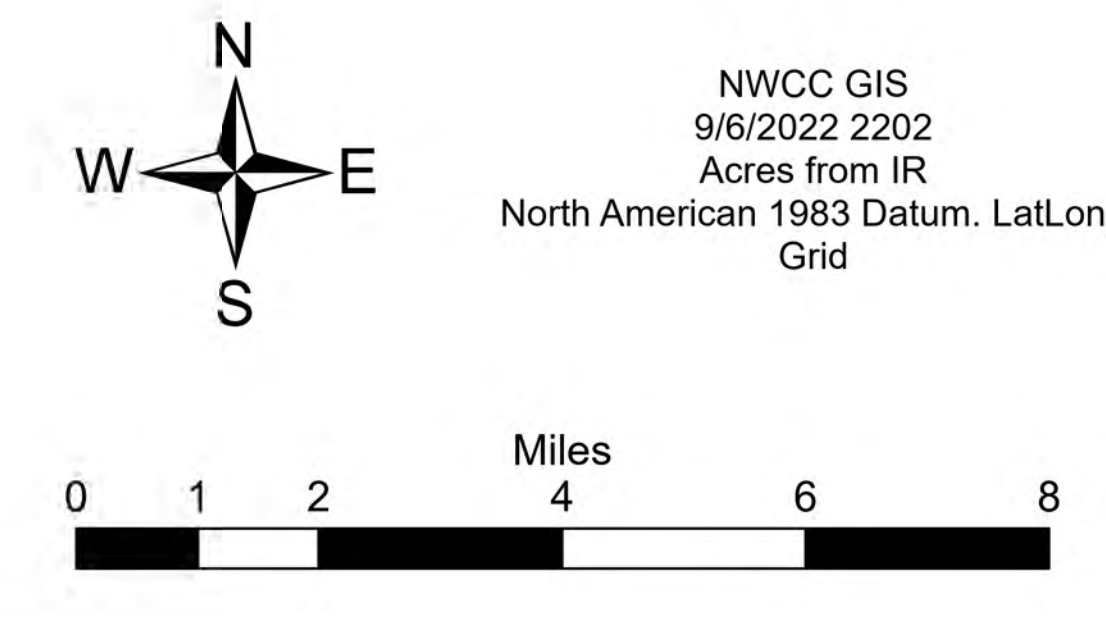


Ops Vicinity
 Double Creek
 OR-WWF-000400
 09/07/22
 59,510 acres at 9/06/22 1845

- | | | | | | |
|---|---|--|---|--|---|
| <ul style="list-style-type: none"> • Dip Site • Helipod • Helibase • Division Break • Branch Break • Incident Command Post • Drop Point • Camp • Staging Area • Lookout • Value at Risk • Landmark • Bridge • Resource Location • Repeater • Water Source • Completed Dozer Line | <ul style="list-style-type: none"> • Completed Hand Line • Planned Burnout • Planned Dozer Line • Planned Hand Line • Planned Mixed Construction Line • Unspecified • Planned Road as Line • Access or Improved Road • Uncontained • Wildfire Daily Fire Perimeter • National Trails • Trail • National Designated Trail • National Designated Trail • Primary Highway • Secondary Highway • Paved Roads | <ul style="list-style-type: none"> • Dirt (Not Paved) • Paved Road • Gravel Road • Dirt Roads • Unimproved Roads • Closed Roads • Federal Wilderness Boundary • Administrative FS Boundary • Wildfire District Office • Campground • Group Campground • Visitor Center • Picnic Site • Boating Site • Interpretive Site • Snowpark | <ul style="list-style-type: none"> • Approved or Proclamation Boundary, NPS • Approved or Proclamation Boundary, USFWS • Wild and Scenic River • Other Management Boundary • State Public Lands • Other State Lands • U.S. Fish Wildlife Service Lands • Bureau of Land Management Lands • National Park Service Lands • Ranger District Office • Group Campground • Visitor Center • Picnic Site • Boating Site • Interpretive Site | <ul style="list-style-type: none"> • Snowpark • National Designated Trail • Primary Highway • Secondary Highway • Paved Roads • Dirt (Not Paved) • Paved Road • Gravel Road • Dirt Roads • Unimproved Roads • Unspecified • Closed Roads • Rapids • Stream / River • Wash | <ul style="list-style-type: none"> • Stream/River, Artificial Path, Canal / Ditch • Stream/River Intermittent • Proclaimed FS Boundary • Administrative FS Boundary • Federal Wilderness Boundary • Ice Mass • Lake / Pond • Lake / Pond (Intermittent) • Reservoir • Township • Protacted Section • Section • Forest Service Land |
|---|---|--|---|--|---|



NWCG GIS
 9/6/2022 2202
 Acres from IR
 North American 1983 Datum. LatLong
 Grid