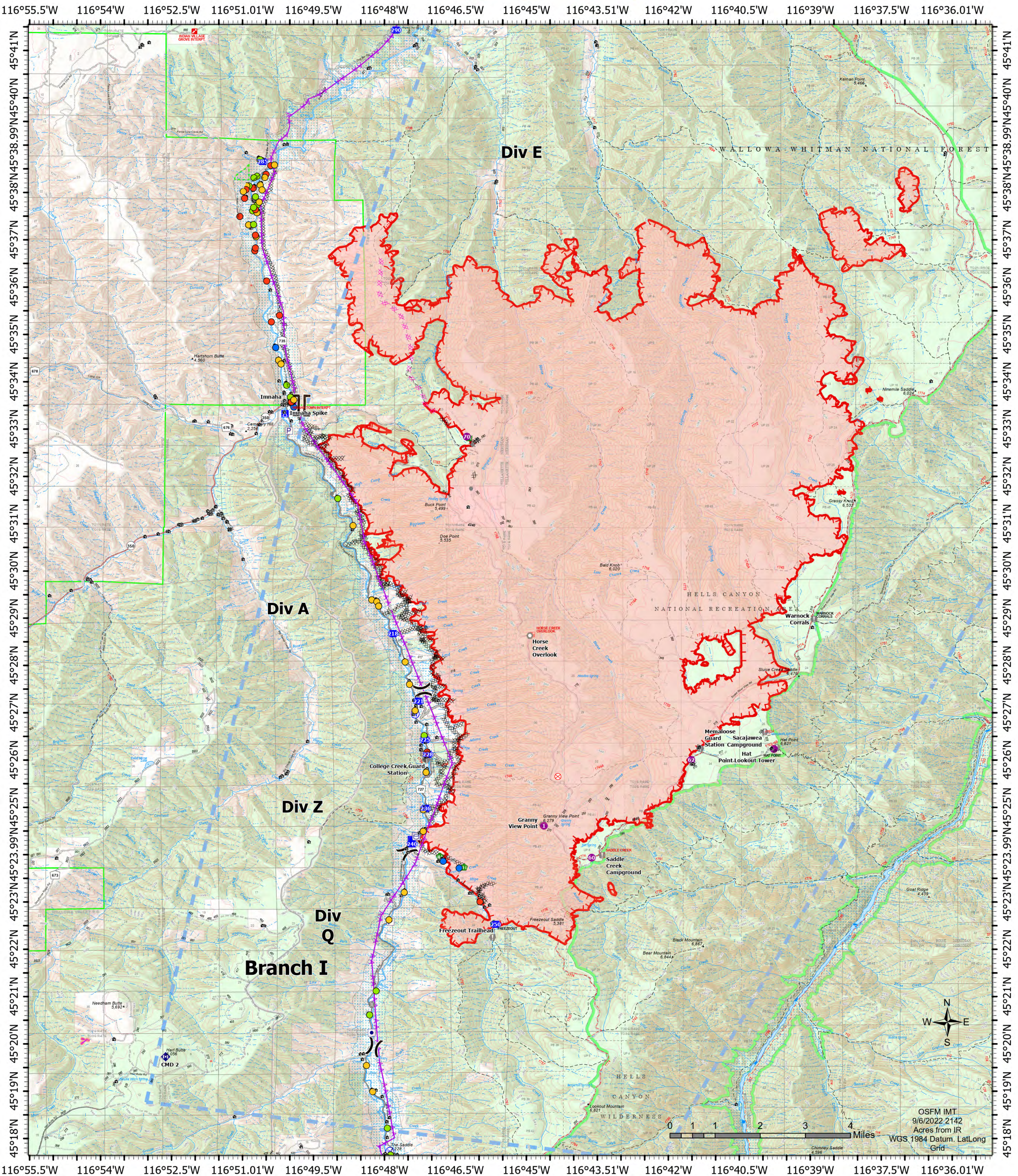


Structure Operations



Double Creek 9/7/2022 Day



Double Creek
OR-WWF-000400
9/7/2022 Day
59,510 acres at 9/06/22 1845

- | | | | | |
|----------------|--------------|-------------------|-------------------------------|--|
| Structures | Branch Break | Value at Risk | Fence - Cut/Damaged | Stand Alone (0 - 2) |
| Dip Site | Drop Point | Other | Repeater | Prep & Hold (3 - 5) |
| Helispot | Closure | Landmark | Water Source | Prep & Go (6 - 8) |
| Division Break | Camp | Bridge | Wildfire Daily Fire Perimeter | NonDefensible - Rescue / Drive By (>9) |
| | Fire Origin | Resource Location | | |



OSFM IMT
 9/6/2022 2142
 Acres from IR
 WGS 1984 Datum. Lat/Long
 Grid