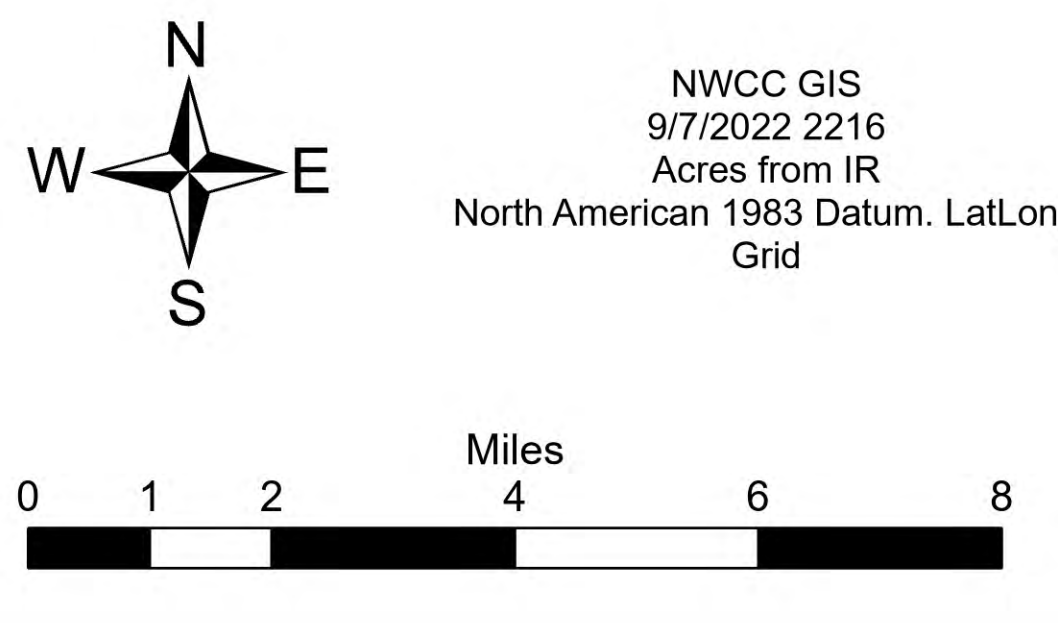


Ops Vicinity
 Double Creek
 OR-WWF-000400
 09/08/22
 100,182 acres at 9/07/22 2000

- Dip Site
- Helipod
- Helibase
- Division Break
- Branch Break
- Incident Command Post
- Drop Point
- Camp
- Staging Area
- Lockout
- Value at Risk
- Landmark
- Bridge
- Resource Location
- Repeater
- Water Source
- Completed Hand Line
- Completed Road as Line
- Planned Burnout
- Planned Dozer Line
- Planned Hand Line
- Planned Mixed Construction Line
- Planned Road as Line
- Access or Improved Road
- Temporary Flight Restriction
- Uncontained
- Wildfire Daily Fire Perimeter
- National_Trails
- Trailhead
- National Designated Trail
- National Designated Trail
- Secondary Highway
- Paved Roads
- Dirt (Not Paved)
- Paved Road
- Gravel Road
- Dirt Roads
- Unimproved Roads
- Unspecified
- Closed Roads
- Federal Wilderness Boundary
- National Park Service Lands
- National Park Service Lands
- Ranger District Office
- Campground
- Group Campground
- Trail
- Visitor Center
- Picnic Site
- Boating Site
- Interpretive Site

- Snowpark
- Approved or Proclamation Boundary, NPS
- Approved or Proclamation Boundary, USFWS
- Wild and Scenic River
- Other Management Boundary
- State Public Lands
- Other State Lands
- U.S. Fish Wildlife Service Lands
- Bureau of Land Management Lands
- National Park Service Lands
- Ranger District Office
- Campground
- Group Campground
- Trailhead
- Visitor Center
- Picnic Site
- Boating Site
- Interpretive Site
- Snowpark
- Trail
- National Designated Trail
- Primary Highway
- Secondary Highway
- Paved Roads
- Dirt (Not Paved)
- Paved Road
- Gravel Road
- Dirt Roads
- Unimproved Roads
- Unspecified
- Closed Roads
- Rapids
- Stream / River
- Stream/River; Artificial Path; Canal / Ditch
- Stream/River Intermittent
- Proclaimed FS Boundary
- Administrative FS Boundary
- Federal Wilderness Boundary
- Ice Mass
- Lake / Pond
- Lake / Pond (Intermittent)
- Reservoir
- Township
- Protected Section
- Section
- Forest Service Land



NWCC GIS
 9/7/2022 2216
 Acres from IR
 North American 1983 Datum, Lat/Long
 Grid

