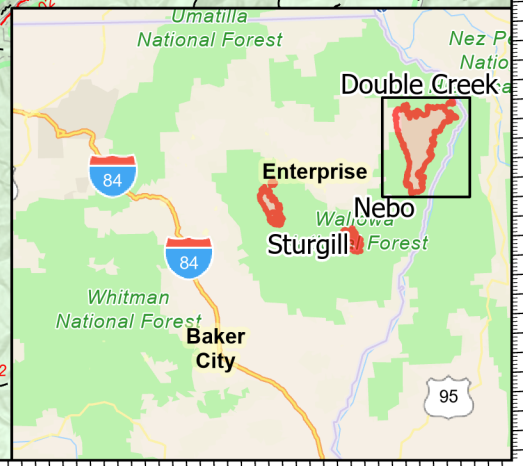
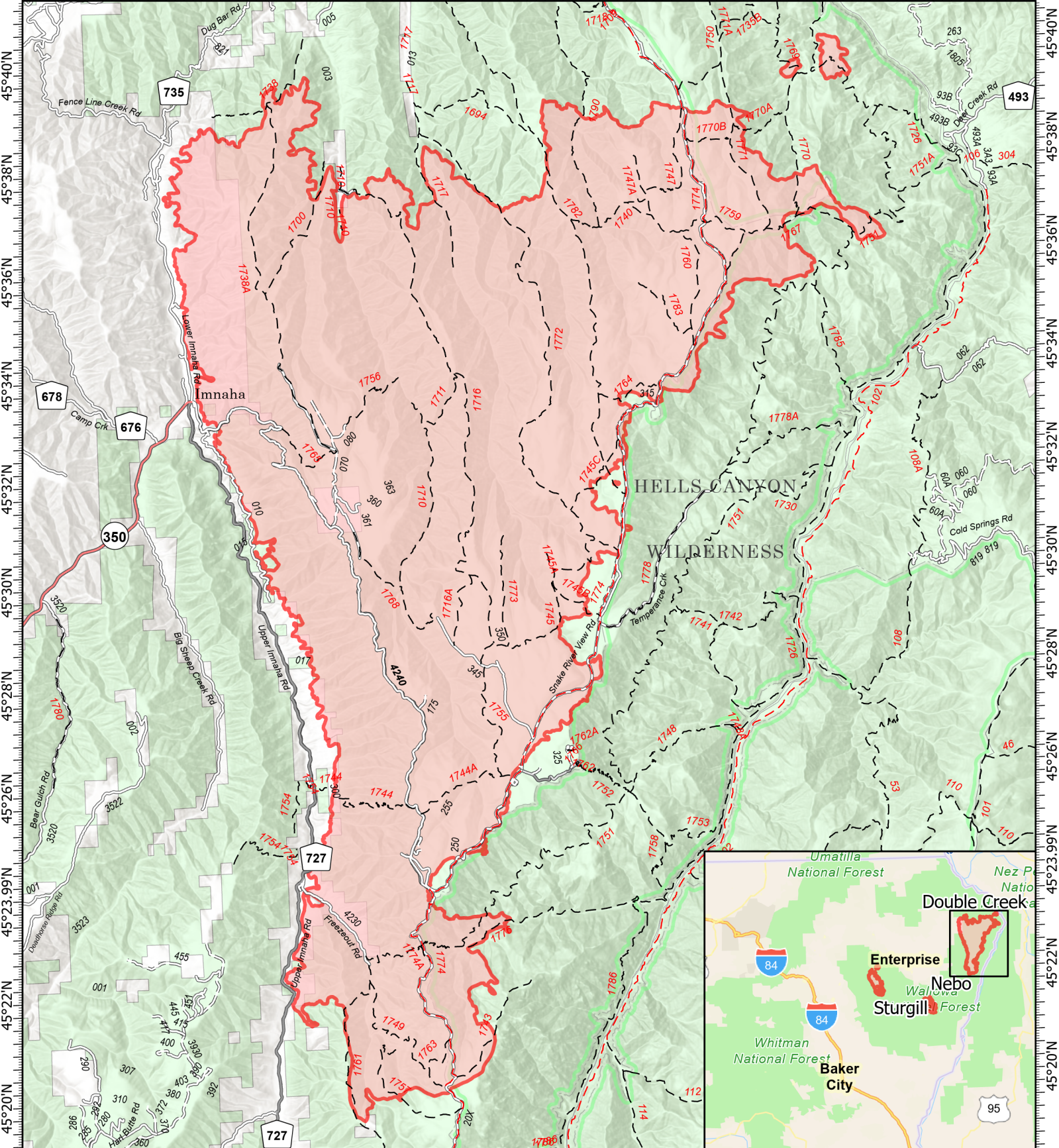


116°54'W 116°52'W 116°50'W 116°48'W 116°46'W 116°44'W 116°42'W 116°40'W 116°38'W 116°36.01'W 116°34'W 116°32'W 116°30'W 116°28'W



116°54'W 116°52'W 116°50'W 116°48'W 116°46'W 116°44'W 116°42'W 116°40'W 116°38'W 116°36.01'W 116°34'W 116°32'W 116°30'W 116°28'W

Public Information

Double Creek
OR-WWF-000400
09/08/22
 100,182 acres at 9/07/22 2000

- ▬ Wildfire Daily Fire Perimeter
- - - Trail
- - - National Designated Trail
- ▬ Paved Road
- ▬ Gravel Road
- ▬ Dirt Roads
- ▬ Unimproved Roads
- ▬ FS Wilderness Boundary
- ▬ Forest Service Land



9/7/2022 2157
 Acres from IR
 North American 1983 Datum.
 Lat/Long Grid