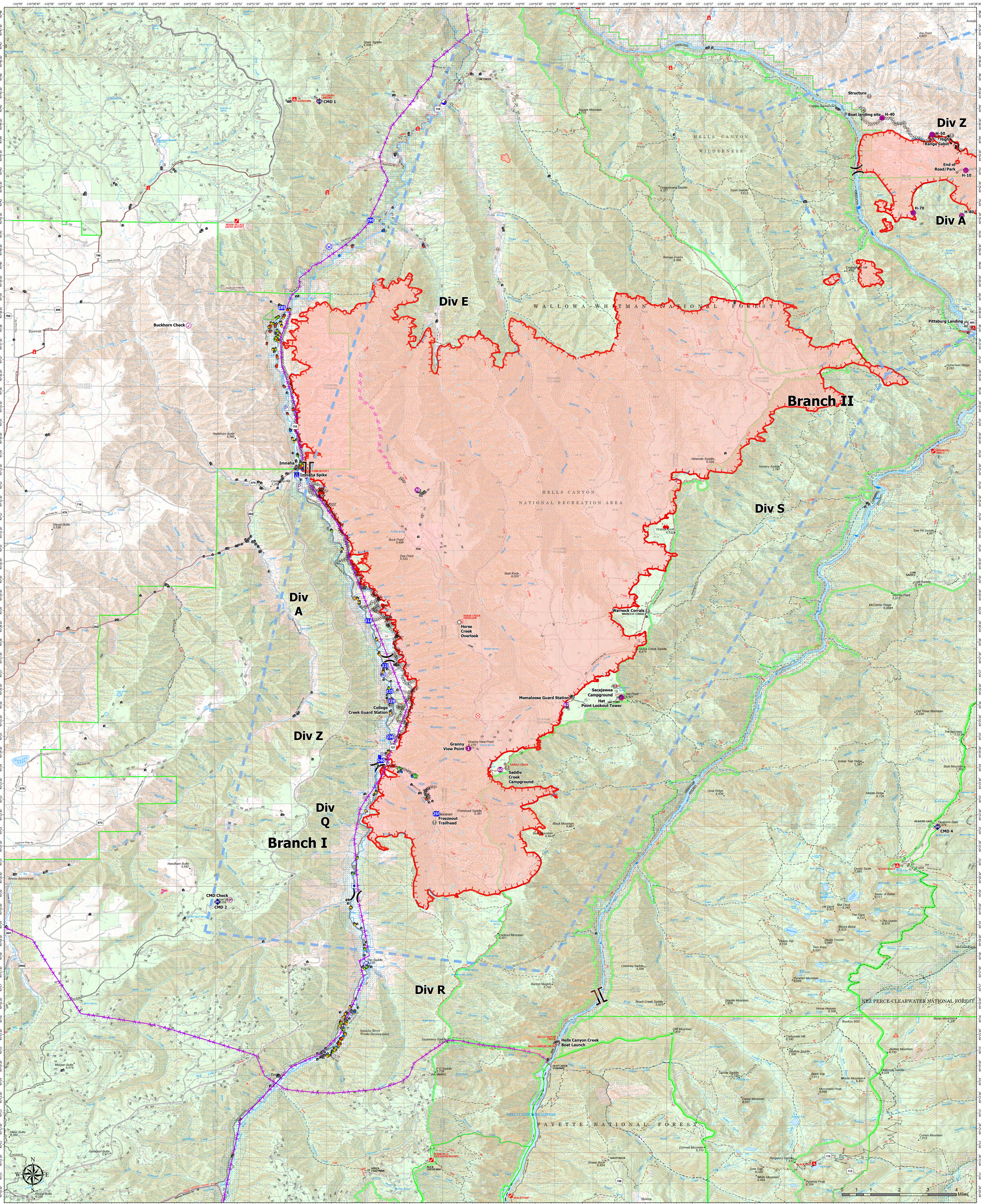


Structure Operations



Double Creek 9/8/2022 Day



OR-WWF-000400
100,182 acres at 9/07/22 2000

- | | | | | | | | | | |
|--|--|---|---|--|---|--|--|--|--|
| <ul style="list-style-type: none"> Structure Label Point Other Property | <ul style="list-style-type: none"> Pump Water Tank Aviation Check Point Dip Site | <ul style="list-style-type: none"> Helipad Division Break Branch Break Drop Point | <ul style="list-style-type: none"> Closure Camp Fire Origin Value at Risk | <ul style="list-style-type: none"> Other Landmark Bridge Resource Location | <ul style="list-style-type: none"> Fence - Cut/Damaged Dozer Push Repeater Water Source | <ul style="list-style-type: none"> Completed Burnout Completed Dozer Line Completed Hand Line Planned Dozer Line | <ul style="list-style-type: none"> Access or Improved Road Aerial Hazard Retardant Drop | <ul style="list-style-type: none"> Temporary Flight Restriction Uncounted Wildfire Daily Fire Perimeter | <ul style="list-style-type: none"> Stand Alone (0 - 2) Prep & Hold (3 - 5) Prep & Go (6 - 8) Non-Defensible Rescue / Drive By (>9) |
|--|--|---|---|--|---|--|--|--|--|

