

Structure Operations

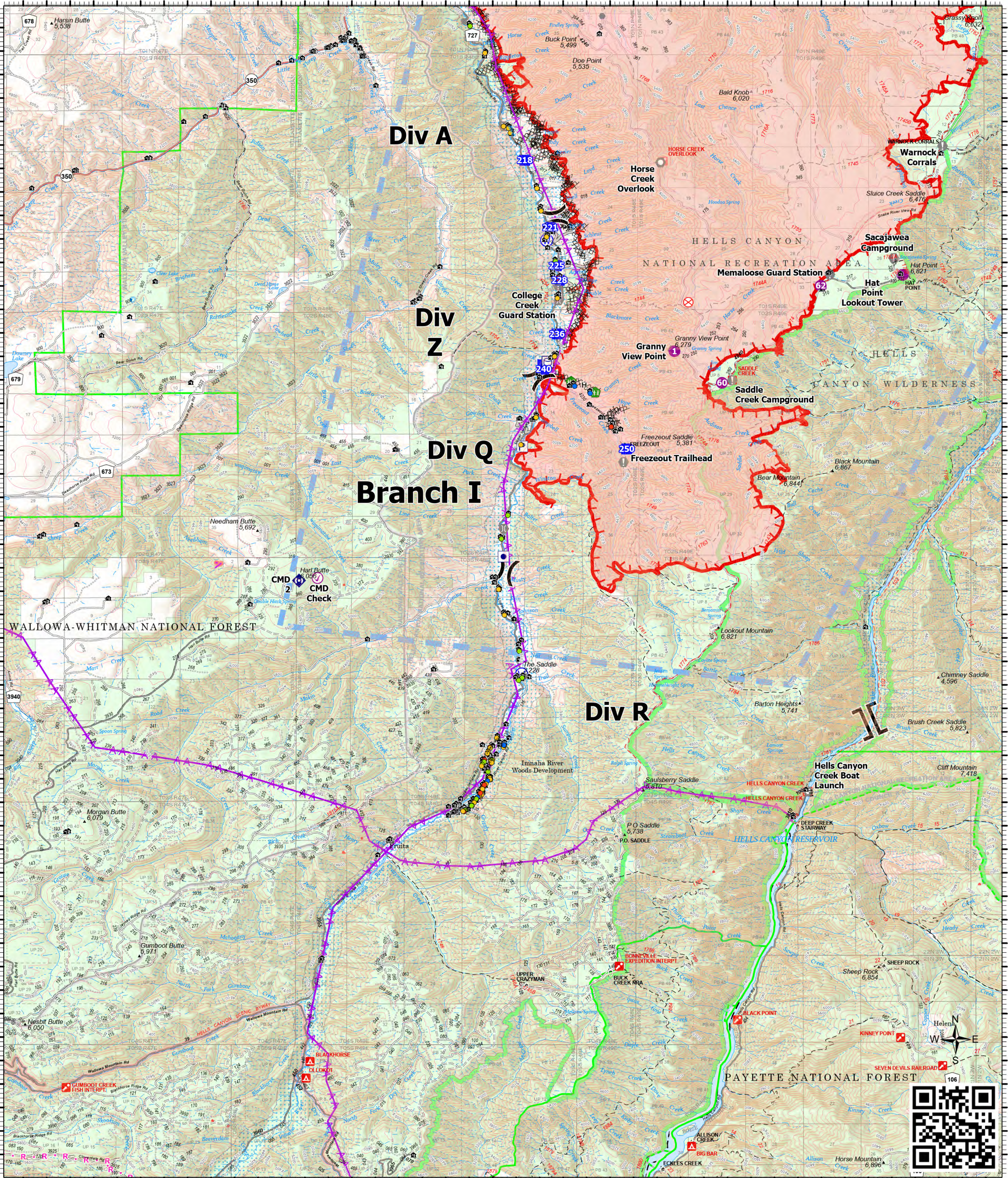


Double Creek 9/8/2022 Day

116°58.51'W 116°57'W 116°55.5'W 116°54'W 116°52.5'W 116°51.01'W 116°49.5'W 116°48'W 116°46.5'W 116°45'W 116°43.51'W 116°42'W 116°40.5'W 116°39'W

45°31'N 45°30'N 45°29'N 45°28'N 45°27'N 45°26'N 45°25'N 45°24.5'N 45°23'N 45°22'N 45°21'N 45°20'N 45°19'N 45°18'N 45°17'N 45°16'N 45°15'N 45°14'N 45°13'N 45°12'N 45°11'N 45°10.5'N

45°31'N 45°30'N 45°29'N 45°28'N 45°27'N 45°26'N 45°25'N 45°24.5'N 45°23'N 45°22'N 45°21'N 45°20'N 45°19'N 45°18'N 45°17'N 45°16'N 45°15'N 45°14'N 45°13'N 45°12'N 45°11'N 45°10.5'N



OR-WWF-000400
100,182 acres at 9/07/22 2000

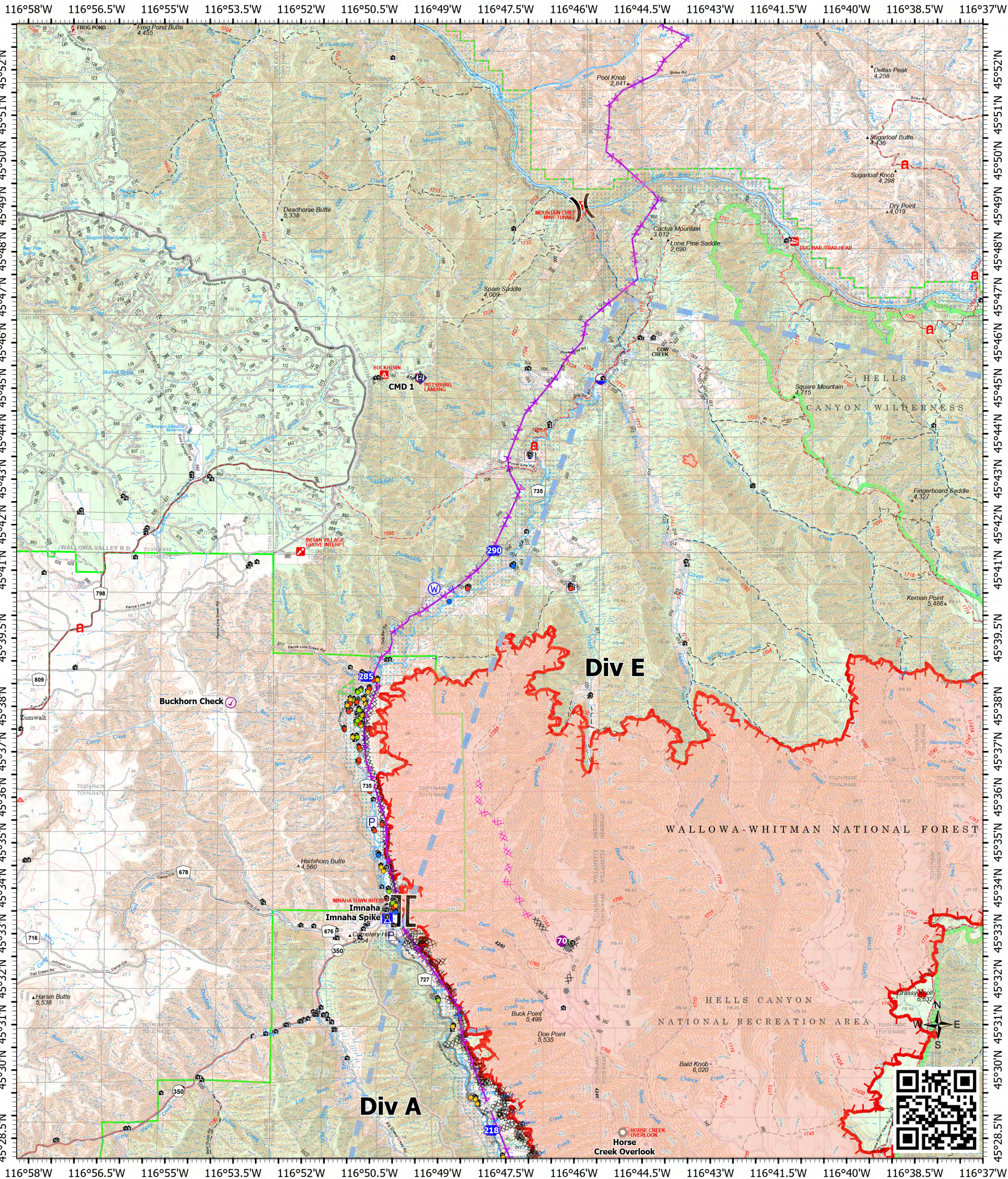
| | | | | |
|----------------------|----------------|---------------|---------------------|-------------------------------|
| Structures | Helispot | Fire Origin | Bridge | Water Source |
| Aviation Check Point | Division Break | Value at Risk | Resource Location | Wildfire Daily Fire Perimeter |
| Dip Site | Branch Break | Other | Fence - Cut/Damaged | |
| Drop Point | Landmark | Repeater | | |

0 0.88 1.75 3.5 5.25 7 Miles

Structure Operations



Double Creek 9/8/2022 Day



OR-WWF-000400
100,182 acres at 9/07/22 2000

| | | | | |
|----------------------|----------------|---------------|---------------------|-------------------------------|
| Structures | Helispot | Closure | Landmark | Repeater |
| Aviation Check Point | Division Break | Camp | Bridge | Water Source |
| Dip Site | Branch Break | Value at Risk | Fence - Cut/Damaged | Wildfire Daily Fire Perimeter |
| Drop Point | Other | Dozer Push | | |

0 0.88 1.75 3.5 5.25 7 Miles