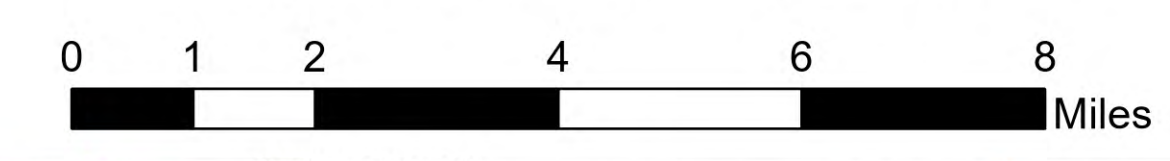


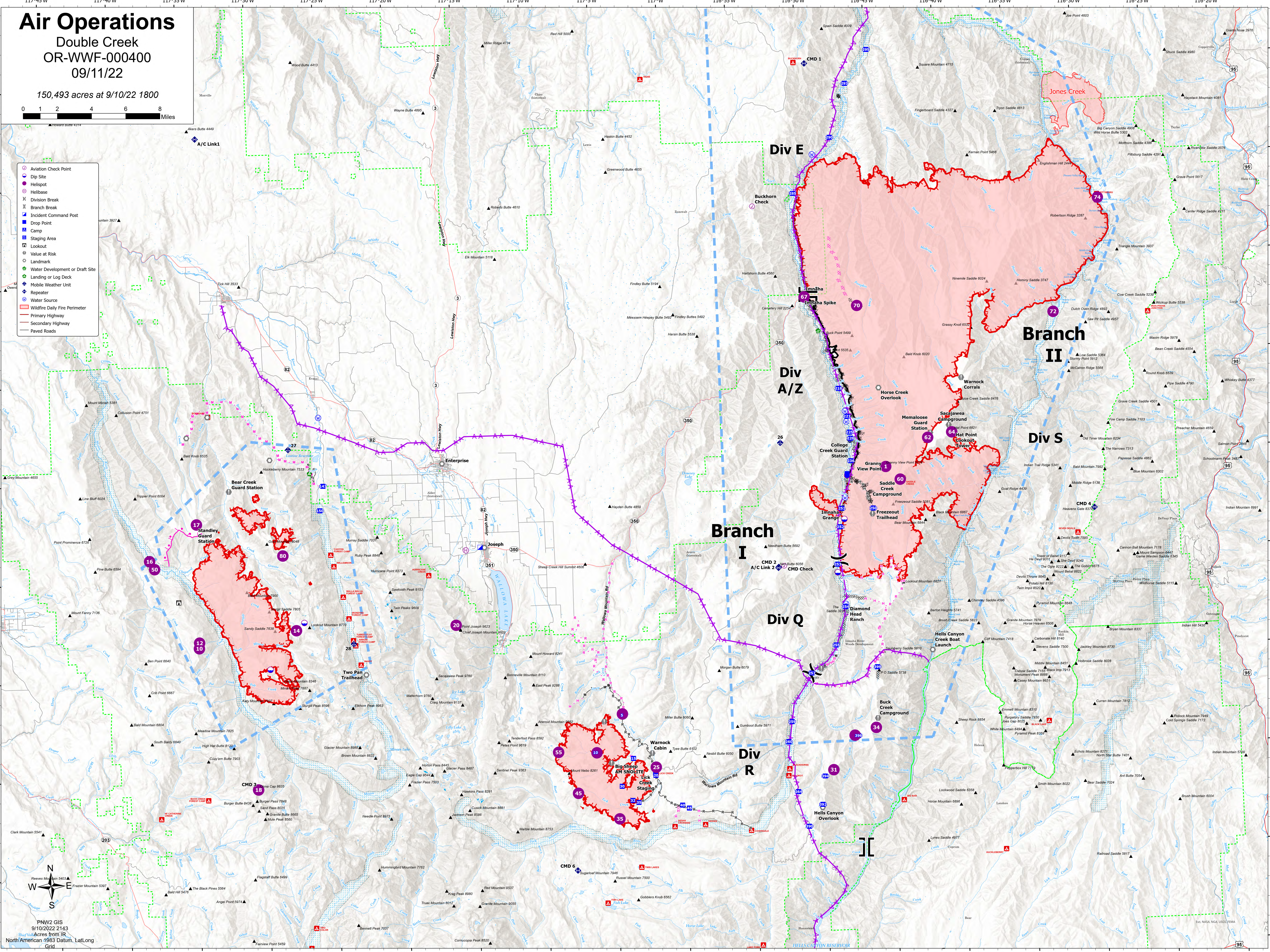
# Air Operations

Double Creek  
OR-WWF-000400  
09/11/22

150,493 acres at 9/10/22 1800



- Aviation Check Point
- Dip Site
- Helispot
- Helibase
- X Division Break
- || Branch Break
- Incident Command Post
- Drop Point
- Camp
- Staging Area
- Lookout
- Value at Risk
- Landmark
- Water Development or Draft Site
- Landing or Log Deck
- Mobile Weather Unit
- Repeater
- Water Source
- Wildfire Daily Fire Perimeter
- Primary Highway
- Secondary Highway
- Paved Roads



PNW2 GIS  
9/10/2022 2143  
Acres from IR  
North American 1983 Datum, Lat/Long  
Grid