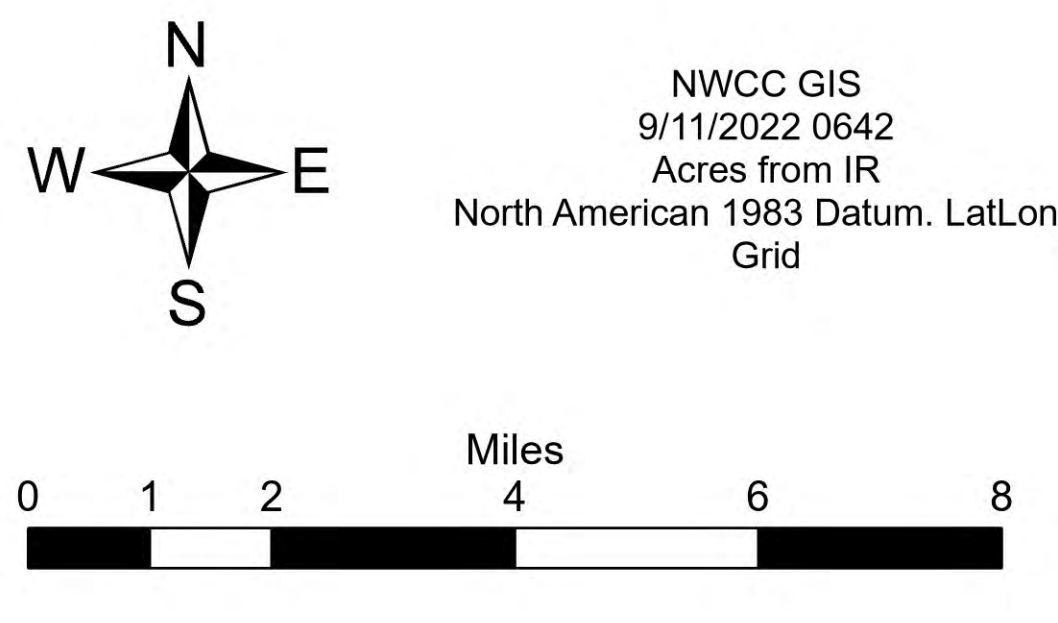


**Ops Vicinity**  
 Double Creek  
 OR-WWF-000400  
 09/11/22

52,301 acres at 9/11/22 0036 PDT

- |   |  |  |  |   |  |
|---|--|--|--|---|--|
| <ul style="list-style-type: none"> <li>• Dip Site</li> <li>• Helispot</li> <li>• Helibase</li> <li>• Division Break</li> <li>• Branch Break</li> <li>• Incident Command Post</li> <li>• Drop Point</li> <li>• Camp</li> <li>• Staging Area</li> <li>• Lookout</li> <li>• Value at Risk</li> <li>• Landmark</li> <li>• Gate</li> <li>• Bridge</li> <li>• Water Development or Draft Site</li> <li>• Resource Location</li> <li>• Landing or Log Deck</li> <li>• Mobile Weather Unit</li> </ul> | <ul style="list-style-type: none"> <li>• Repeater</li> <li>• Hazard</li> <li>• Water Source</li> <li>• Completed Dozer Line</li> <li>• Completed Hand Line</li> <li>• Completed Mixed Construction Line</li> <li>• Completed Road as Line</li> <li>• Planned Burnout</li> <li>• Planned Dozer Line</li> <li>• Planned Hand Line</li> <li>• Planned Mixed Construction Line</li> <li>• Planned Road as Line</li> <li>• Gate</li> <li>• Bridge</li> <li>• Temporary Flight Restriction</li> <li>• Contained</li> <li>• Wildfire Daily Fire Perimeter</li> <li>• National Trails</li> </ul> | <ul style="list-style-type: none"> <li>- Trail</li> <li>- National Designated Trail</li> <li>- National Designated Trail</li> <li>- National Designated Trail</li> <li>- Primary Highway</li> <li>- Secondary Highway</li> <li>- Paved Roads</li> <li>- Dirt (Not Paved)</li> <li>- Gravel Road</li> <li>- Gravel Road</li> <li>- Dirt Roads</li> <li>- Unimproved Roads</li> <li>- Unspecified</li> <li>- Closed Roads</li> <li>- Federal Wilderness Boundary</li> <li>- Administrative FS Boundary</li> <li>- Ranger District Office</li> <li>- Campground</li> <li>- Group Campground</li> <li>- Trailhead</li> </ul> | <ul style="list-style-type: none"> <li>• Visitor Center</li> <li>• Picnic Site</li> <li>• Boating Site</li> <li>• Interpretive Site</li> <li>• Snowpark</li> <li>• Approved or Proclamation Boundary, NPS</li> <li>• Approved or Proclamation Boundary, USFWS</li> <li>• Wild and Scenic River</li> <li>• Other Management Boundary</li> <li>• State Public Lands</li> <li>• Other State Lands</li> <li>• U.S. Fish Wildlife Service Lands</li> <li>• Bureau of Land Management Lands</li> <li>• National Park Service Lands</li> <li>• Ranger District Office</li> <li>• Campground</li> <li>• Group Campground</li> <li>• Trailhead</li> </ul> | <ul style="list-style-type: none"> <li>• Visitor Center</li> <li>• Picnic Site</li> <li>• Boating Site</li> <li>• Interpretive Site</li> <li>• Snowpark</li> <li>- Trail</li> <li>- National Designated Trail</li> <li>- National Designated Trail</li> <li>- Primary Highway</li> <li>- Secondary Highway</li> <li>- Paved Roads</li> <li>- Dirt (Not Paved)</li> <li>- Gravel Road</li> <li>- Gravel Road</li> <li>- Dirt Roads</li> <li>- Unimproved Roads</li> <li>- Unspecified</li> <li>- Closed Roads</li> </ul> | <ul style="list-style-type: none"> <li>• Rapids</li> <li>• Stream / River</li> <li>• Wash</li> <li>• Stream/River; Artificial Path;</li> <li>• Canal / Ditch</li> <li>• Stream/River Intermittent</li> <li>• National Designated Trail</li> <li>• National Designated Trail</li> <li>• Federal Wilderness Boundary</li> <li>• Federal Wilderness Boundary</li> <li>• Ice Mass</li> <li>• Lake / Pond</li> <li>• Lake / Pond (Intermittent)</li> <li>• Reservoir</li> <li>• Township</li> <li>• Protracted Section</li> <li>• Section</li> <li>• Forest Service Land</li> </ul> |
|---|--|--|--|---|--|



NWCC GIS  
 9/11/2022 0642  
 Acres from IR  
 North American 1983 Datum, Lat/Long  
 Grid