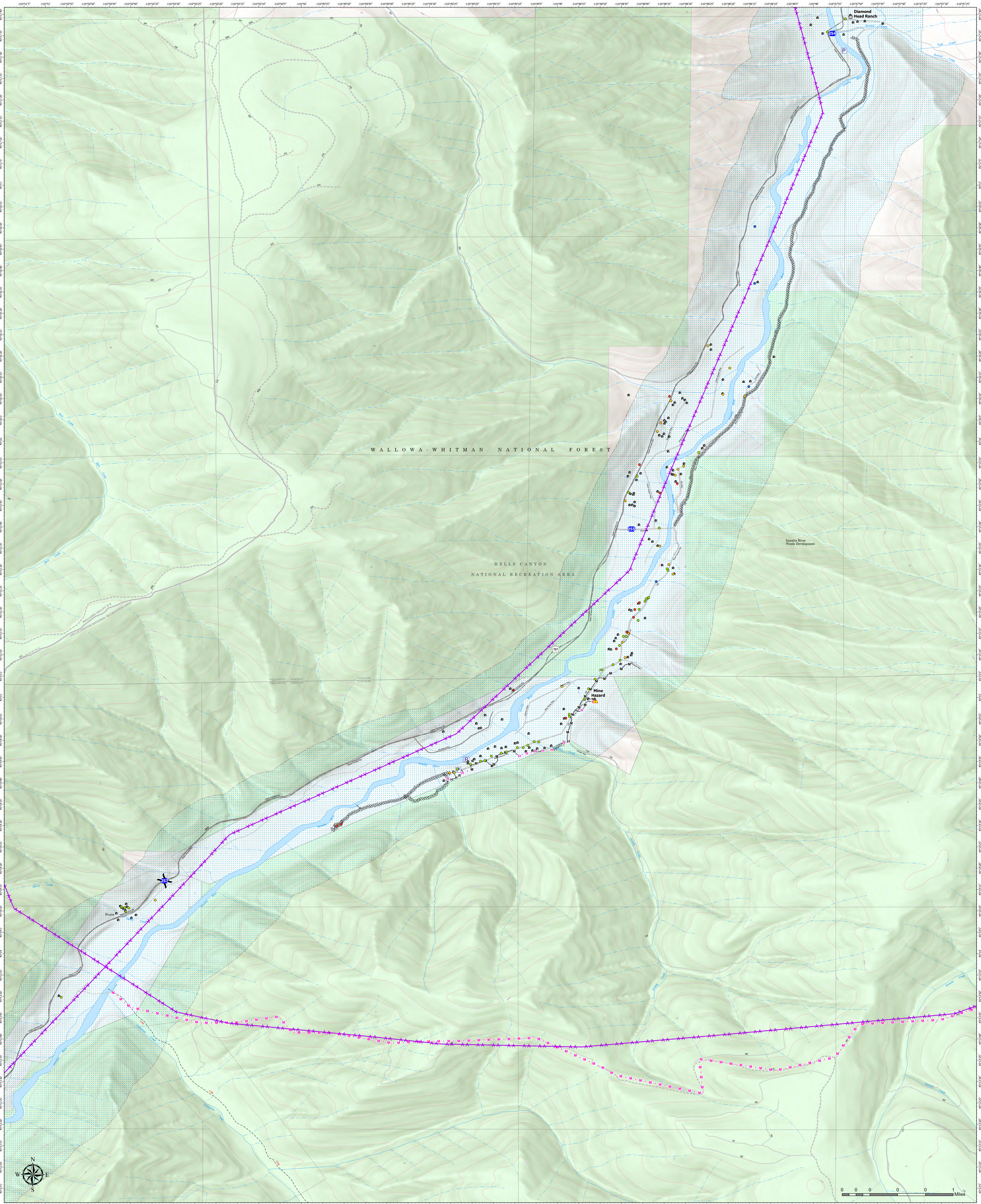


Structure Operations



Double Creek 9/11/2022 Day



WALLOWA-WHITMAN NATIONAL FOREST

HELLS CANYON NATIONAL RECREATION AREA

Inmaha River Works Development

Mine Hazard

0 0 0 0 0 0 1 Miles

OR-WWF-000400
150,493 acres at 9/10/22 1800

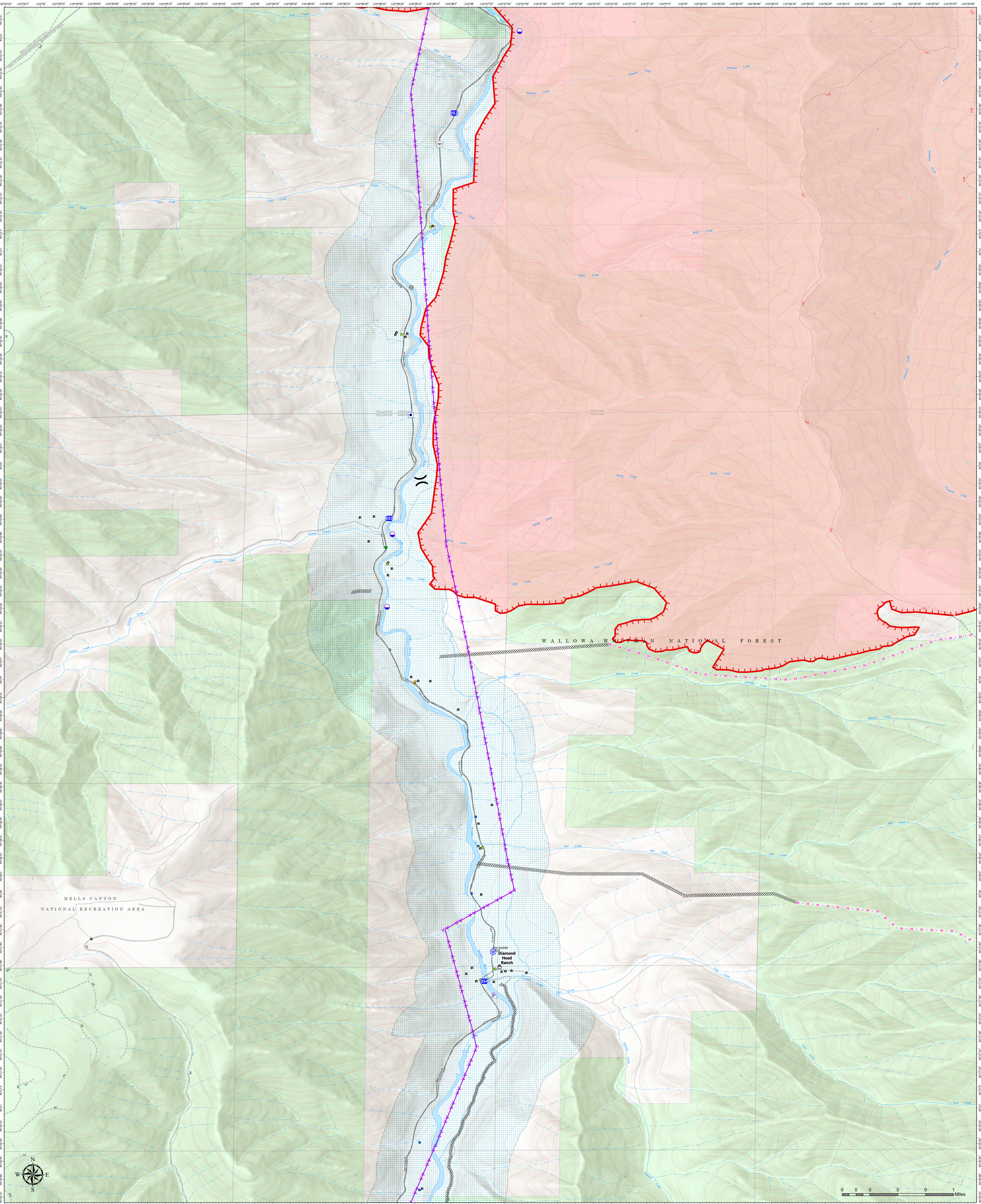
- Structures
- Drop Point
- ▲ Hazard
- Completed Mixed Construction Line
- Planned Mixed Construction Line
- ▲ Aerial Hazard
- Value at Risk
- Division Break
- X Completed Dozer Line
- Completed Hand Line
- Completed Road as Line
- Landmark
- Non-Defensible - Rescue / Drive By (>9)



Structure Operations



Double Creek 9/11/2022 Day



OR-WWF-000400
150,493 acres at 9/10/22 1800

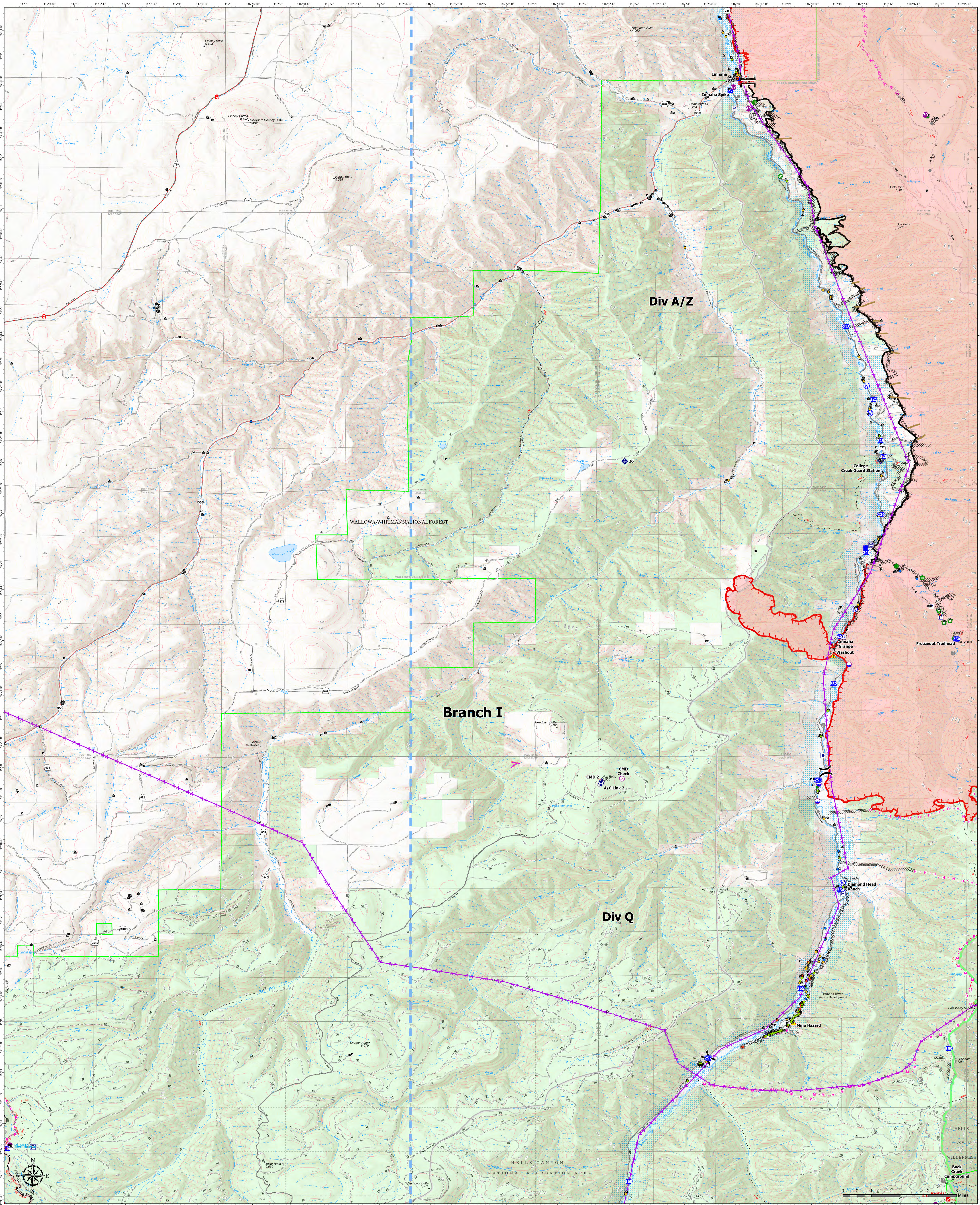
- Structures
- Pump
- Drop Point
- Bridge
- Completed Doser Line
- Uncontained
- Other Property
- Dip Site
- Other
- Repair Point
- Planned Hand Line
- Aerial Hazard
- Wildfire Daily Fire Perimeter
- Division Break
- Landmark
- Water Source
- Stand Alone (0 - 2)
- Prep & Hold (3 - 5)
- Prep & Go (6 - 8)
- NonDefensible -
- Rescue / Drive By (>9)



Structure Operations



Double Creek 9/11/2022 Day



OR-WWF-000400
150,493 acres at 9/10/22 1800

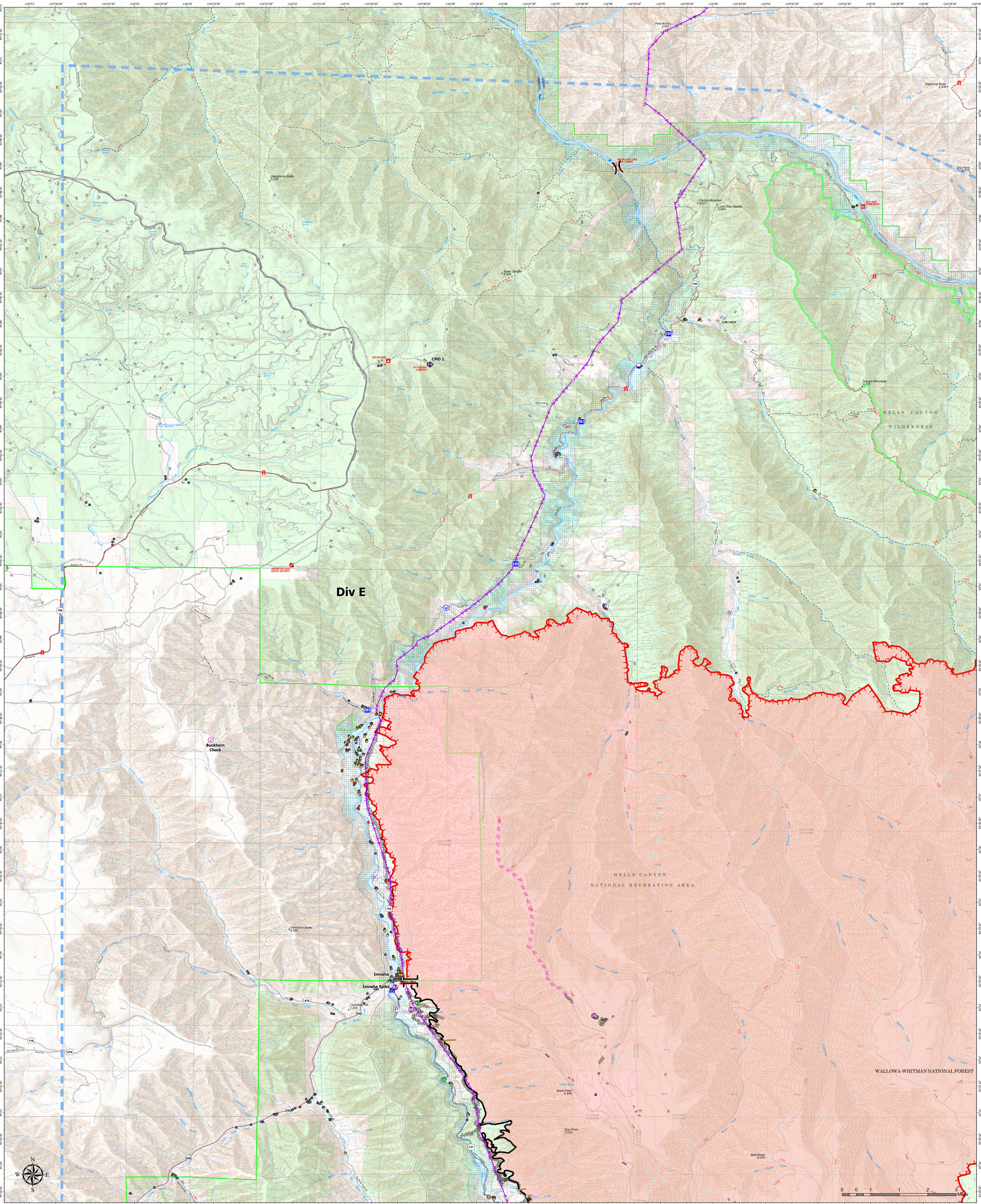
- | | | | | | | | | | | | |
|---|--|---|--|---|---|---|--|--|---|--|---|
| <ul style="list-style-type: none"> ⬮ Structures ⬮ Label Point ⬮ Other Property ⬮ Pump | <ul style="list-style-type: none"> ⬮ Water Tank ⬮ Aviation Check Point ⬮ Dip Site ⬮ Helispot | <ul style="list-style-type: none"> ⬮ Division Break ⬮ Branch Break ⬮ Drop Point ⬮ Closure | <ul style="list-style-type: none"> ⬮ Camp ⬮ Value at Risk ⬮ Other ⬮ Landmark | <ul style="list-style-type: none"> ⬮ Gate ⬮ Bridge ⬮ Water Development or Draft Site ⬮ Structure Wrap | <ul style="list-style-type: none"> ⬮ Resource Location ⬮ Repair Point ⬮ Fence - Cut/Damaged ⬮ Clean Up Area | <ul style="list-style-type: none"> ⬮ Mobile Weather Unit ⬮ Repeater ⬮ Hazard ⬮ Water Source | <ul style="list-style-type: none"> ⬮ Completed Dozer Line ⬮ Completed Hand Line ⬮ Completed Mixed Construction Line ⬮ Completed Road as Line | <ul style="list-style-type: none"> ⬮ Planned Dozer Line ⬮ Planned Hand Line ⬮ Planned Mixed Construction Line ⬮ Planned Road as Line | <ul style="list-style-type: none"> ⬮ Access or Improved Road ⬮ Repair Line ⬮ Aerial Hazard ⬮ Retardant Drop | <ul style="list-style-type: none"> ⬮ Temporary Flight Restriction ⬮ Contained ⬮ Uncontained | <ul style="list-style-type: none"> ⬮ Stand Alone (0 - 2) ⬮ Prep & Hold (3 - 5) ⬮ Prep & Go (6 - 8) ⬮ Non-Defensible - Rescue / Drive By (>9) |
|---|--|---|--|---|---|---|--|--|---|--|---|



Structure Operations



Double Creek 9/11/2022 Day



Div E

HELLS CANYON NATIONAL RECREATION AREA

WALLOWA-WHITMAN NATIONAL FOREST

OR-WWF-000400
150,493 acres at 9/10/22 1800

- | | | | | | | | | | |
|--|--|---|---|---|---|---|---|--|---|
| <ul style="list-style-type: none"> Structures Label Point Other Property | <ul style="list-style-type: none"> Pump Aviation Check Point Dip Site Helispot | <ul style="list-style-type: none"> Division Break Branch Break Drop Point Closure | <ul style="list-style-type: none"> Camp Other Landmark Bridge | <ul style="list-style-type: none"> Water Development or Draft Site Fence - Cut/Damaged Dozer Push | <ul style="list-style-type: none"> Repeater Water Source Completed Dozer Line Completed Hand Line | <ul style="list-style-type: none"> Planned Dozer Line Repair Line Aerial Hazard | <ul style="list-style-type: none"> Temporary Flight Restriction Contained Uncontained | <ul style="list-style-type: none"> Wildfire Daily Fire Perimeter | <ul style="list-style-type: none"> Stand Alone (0 - 2) Prep & Hold (3 - 5) Prep & Go (6 - 8) Non-Defensible - Rescue / Drive By (>9) |
|--|--|---|---|---|---|---|---|--|---|

