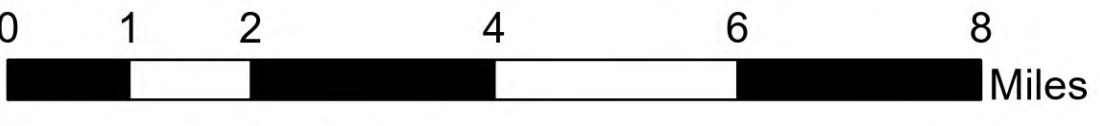


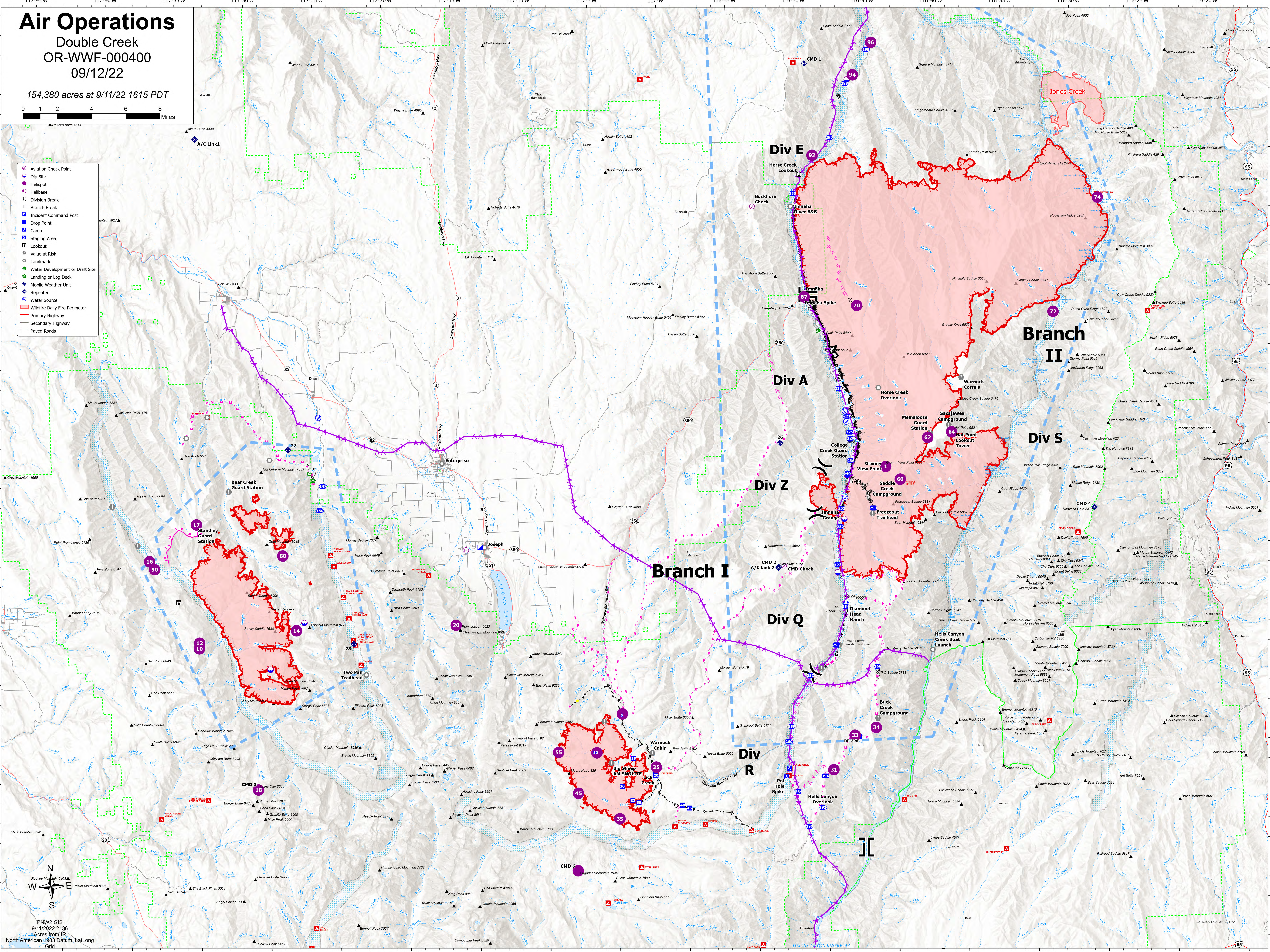
# Air Operations

Double Creek  
OR-WWF-000400  
09/12/22

154,380 acres at 9/11/22 1615 PDT



- Aviation Check Point
- Dip Site
- Helispot
- Helibase
- X Division Break
- || Branch Break
- Incident Command Post
- Drop Point
- Camp
- Staging Area
- Lookout
- Value at Risk
- Landmark
- Water Development or Draft Site
- Landing or Log Deck
- Mobile Weather Unit
- Repeater
- Water Source
- ▭ Wildfire Daily Fire Perimeter
- ▭ Primary Highway
- ▭ Secondary Highway
- ▭ Paved Roads



PNW2 GIS  
9/11/2022 2136  
Acres from IR  
North American 1983 Datum, Lat/Long  
Grid