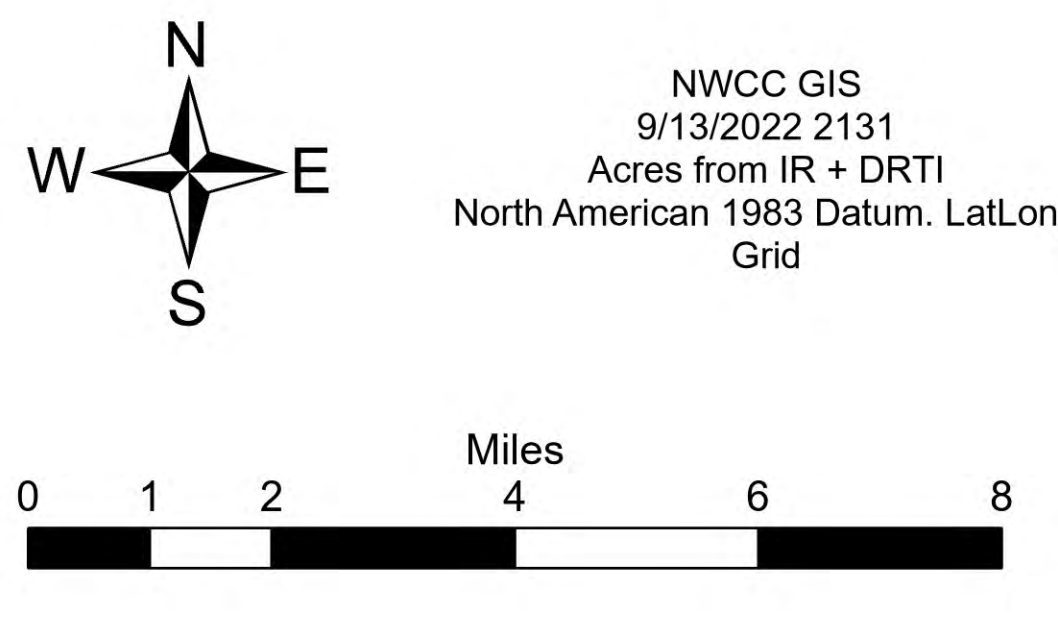


**Ops Vicinity**  
 Double Creek  
 OR-WWF-000400  
 09/14/22

6,195 acres at 9/13/2022 1543 PDT

- Dip Site
- Helispot
- Helibase
- Division Break
- Branch Break
- Incident Command Post
- Drop Point
- Camp
- Staging Area
- Lookout
- Hot Spot - Spot Fire
- Value at Risk
- Landmark
- Gate
- Water Development or Draft Site
- Resource Location
- Landing or Log Deck
- Mobile Weather Unit
- Repeater
- Hazard
- Water Source
- Completed Dozer Line
- Completed Fuel Break
- Completed Hand Line
- Completed Mixed Construction Line
- National\_Trails
- Completed Road as Line
- Planned Burnout
- Planned Dozer Line
- Planned Fuel Break
- Planned Hand Line
- Planned Mixed Construction Line
- Planned Road as Line
- Access or Improved Road
- Temporary Flight Restriction
- Contained
- Uncontained
- Wildfire Daily Fire Perimeter
- National\_Trails
- Campground
- Group Campground
- Picnic Center
- Visitor Center
- Boating Site
- Interpretive Site
- Snowpark
- Wild and Scenic River
- Other Management Boundary
- State Public Lands
- Other State Lands
- U.S. Fish Wildlife Service Lands
- Bureau of Land Management Lands
- National Park Service Lands
- Campground
- Group Campground
- Trailhead
- Visitor Center
- Picnic Site
- Boating Site
- Interpretive Site
- Snowpark



NWCC GIS  
 9/13/2022 2131  
 Acres from IR + DRTI  
 North American 1983 Datum, Lat/Long  
 Grid

