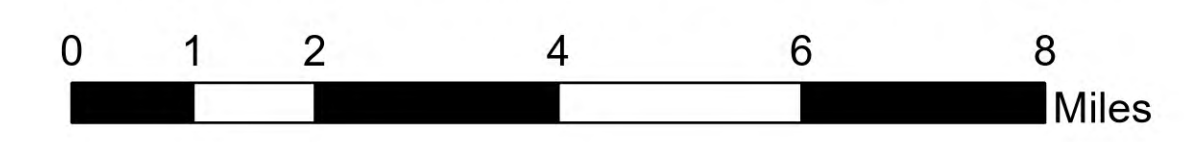


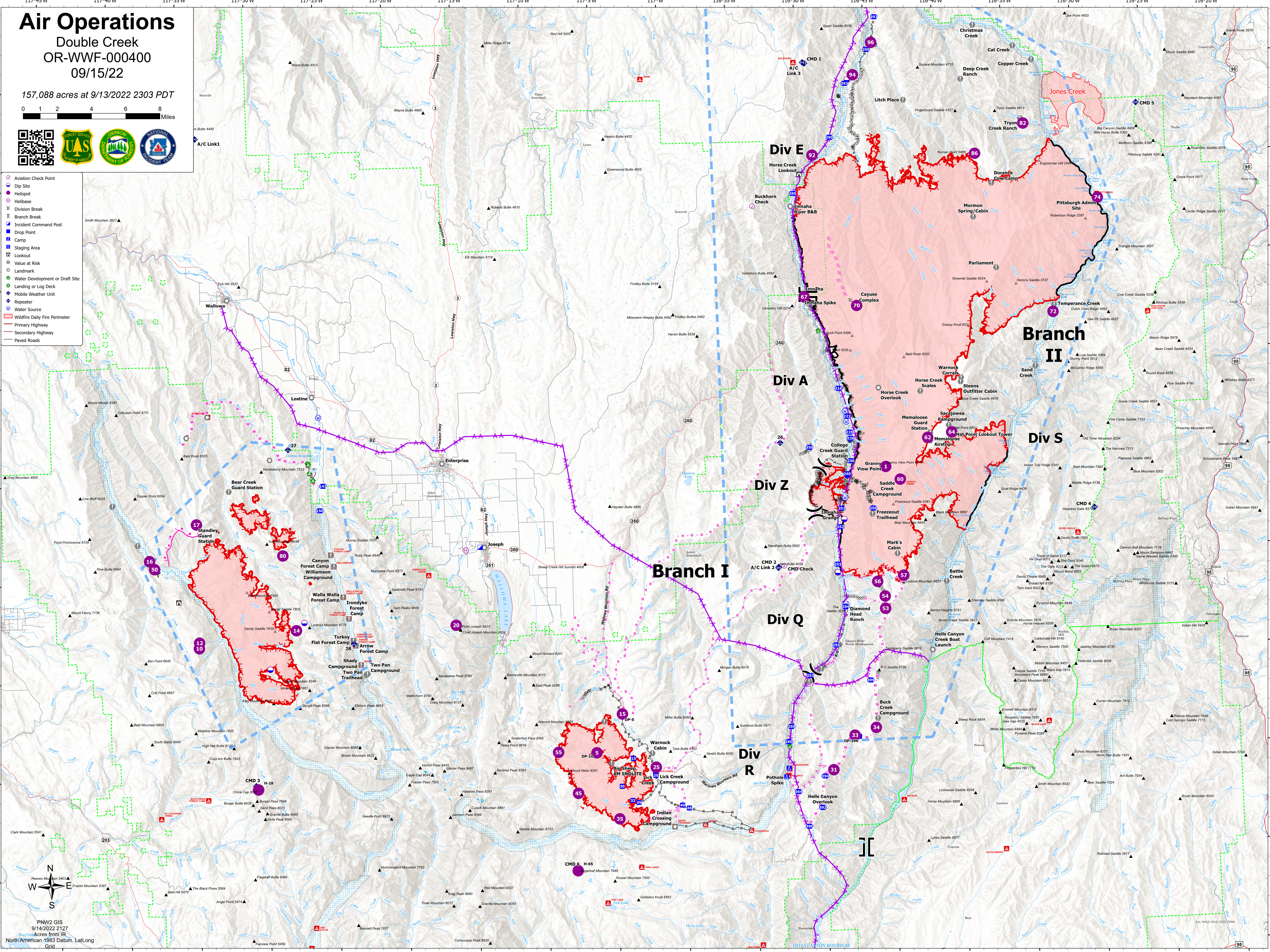
Air Operations

Double Creek
OR-WWF-000400
09/15/22

157,088 acres at 9/13/2022 2303 PDT



- Aviation Check Point
- Dip Site
- Helispot
- Helibase
- Division Break
- Branch Break
- Incident Command Post
- Drop Point
- Camp
- Staging Area
- Lookout
- Value at Risk
- Landmark
- Water Development or Draft Site
- Landing or Log Deck
- Mobile Weather Unit
- Repeater
- Water Source
- Wildfire Daily Fire Perimeter
- Primary Highway
- Secondary Highway
- Paved Roads



PNW2 GIS
9/14/2022 2127
Acres from IR
North American 1983 Datum, Lat/Long
Grid