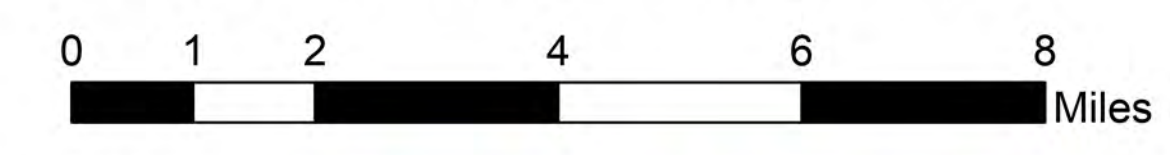


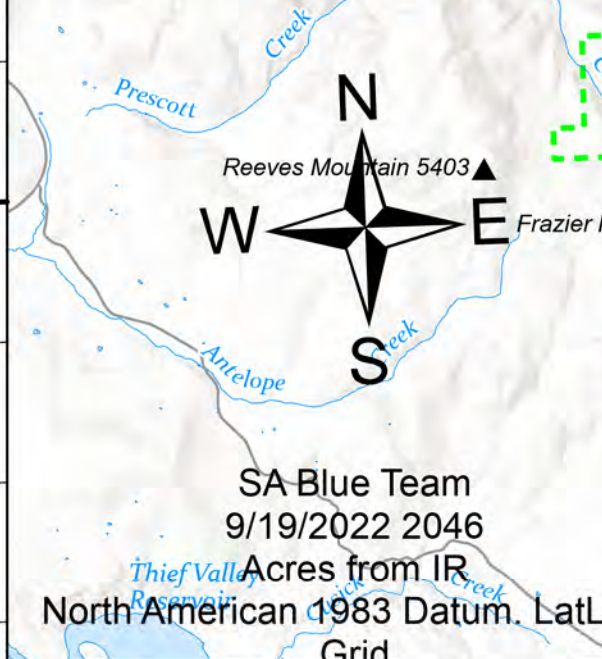
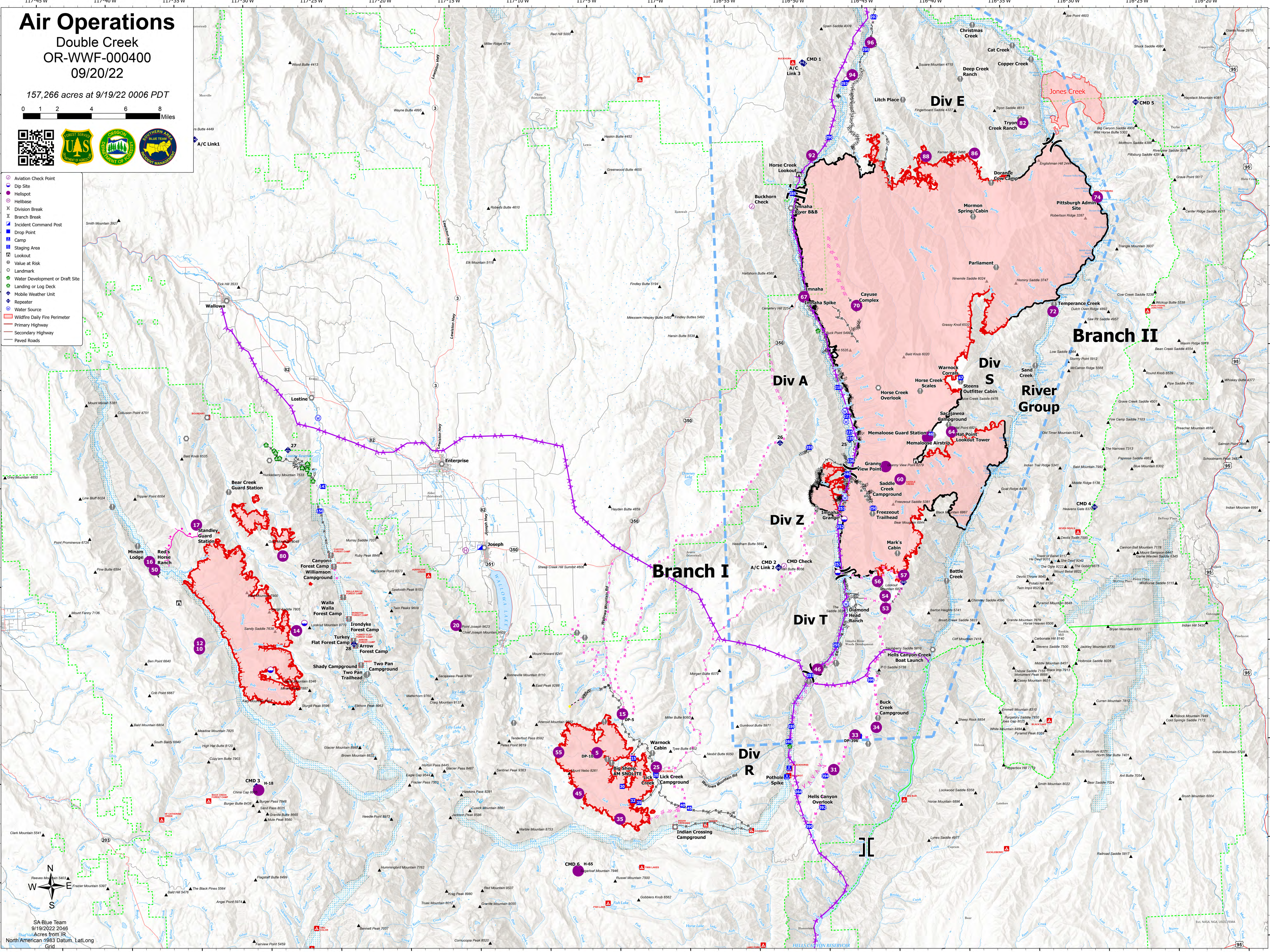
# Air Operations

Double Creek  
OR-WWF-000400  
09/20/22

157,266 acres at 9/19/22 0006 PDT



- Aviation Check Point
- Dip Site
- Helispot
- ⌵ Division Break
- ⌵ Branch Break
- ⌵ Incident Command Post
- ⌵ Drop Point
- ⌵ Camp
- ⌵ Staging Area
- ⌵ Lookout
- ⌵ Value at Risk
- ⌵ Landmark
- ⌵ Water Development or Draft Site
- ⌵ Landing or Log Deck
- ⌵ Mobile Weather Unit
- ⌵ Repeater
- ⌵ Water Source
- ▭ Wildfire Daily Fire Perimeter
- ▭ Primary Highway
- ▭ Secondary Highway
- ▭ Paved Roads



SA Blue Team  
9/19/2022 2046  
Acres from IR  
North American 1983 Datum, Lat/Long  
Grid