

Ops Vicinity

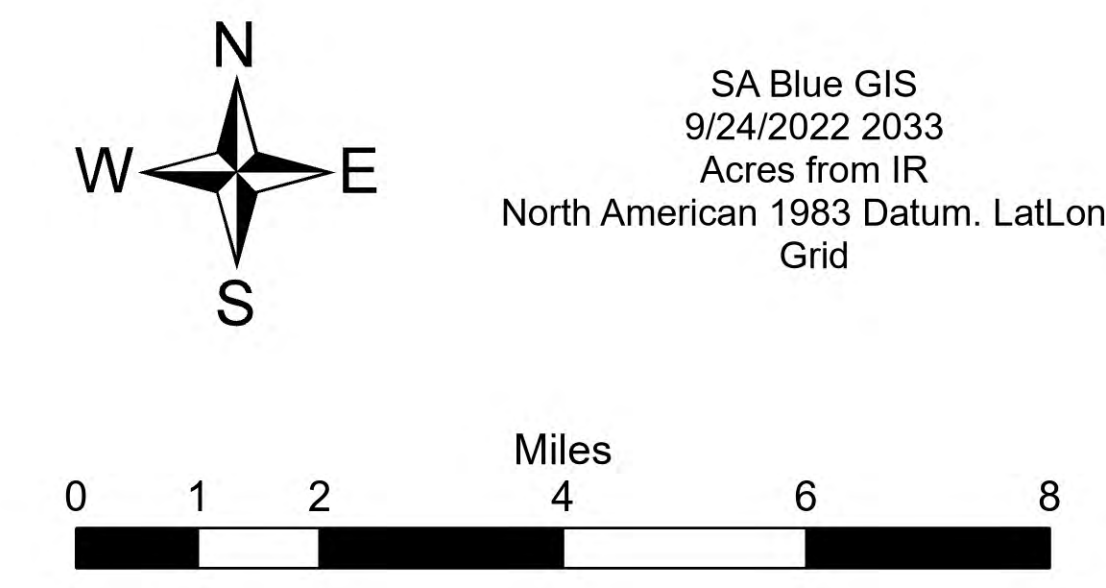
Double Creek

OR-WWF-000400

09/25/22

157,704 acres at 9/24/22 0015 PDT

- | | | | |
|---|--|---|---|
| <ul style="list-style-type: none"> • Dip Site • Helispot • Helibase • Division Break • Branch Break • Incident Command Post • Drop Point • Camp • Staging Area • Lookout • Hot Spot - Spot Fire • Value at Risk • Landmark • Gate • Bridge | <ul style="list-style-type: none"> • Water Development or Draft Site • Resource Location • Landing or Log Deck • Hazard Tree • Mobile Weather Unit • Repeater • Completed Dozer Line • Completed Fuel Break • Completed Hand Line • Completed Mixed Construction Line • Completed Road as Line • Planned Road as Line • Access or Improved Road | <ul style="list-style-type: none"> ■ Contained ■ Uncontained ■ Wildfire Daily Fire Perimeter ■ Campground ■ Group Campground ■ Trailhead ■ Visitor Center ■ Hazard ■ Water Source ■ Completed Dozer Line ■ Completed Fuel Break ■ Completed Hand Line ■ Completed Mixed Construction Line ■ Completed Road as Line ■ Planned Road as Line ■ Access or Improved Road | <ul style="list-style-type: none"> ■ Picnic Site ■ Boating Site ■ Interpretive Site ■ Snowpark ■ Bureau of Land Management ■ National Park Service ■ Forest Service ■ U.S. Fish and Wildlife Service ■ Paved Road ■ Gravel Road, Suitable for Passenger Car ■ Dirt Road, Suitable for Passenger Car ■ Road, Not Maintained for Passenger Car ■ National Forest System Roads closed to motorized uses |
|---|--|---|---|



SA Blue GIS
9/24/2022 20:33
Acres from IR
North American 1983 Datum, Lat/Long
Grid

