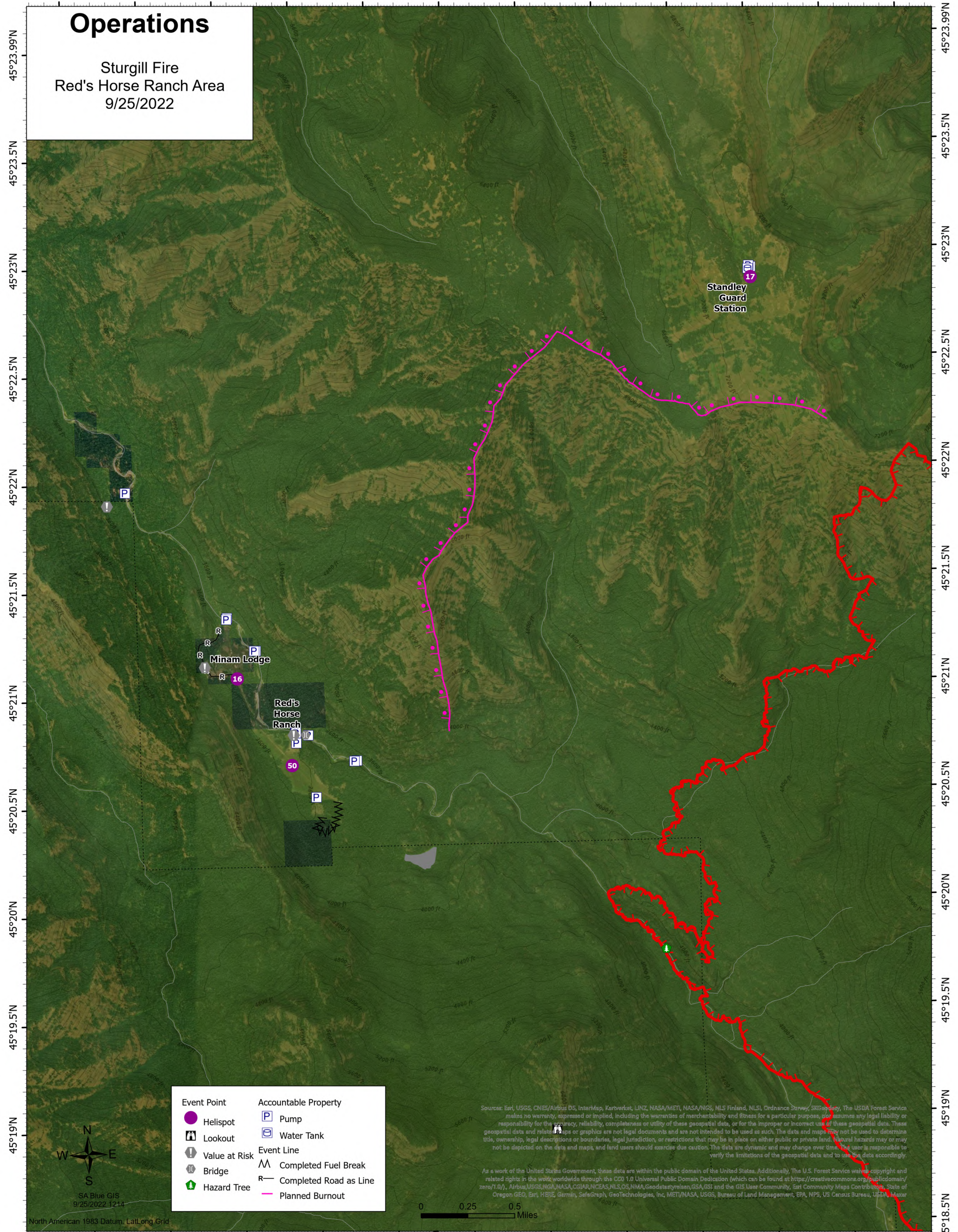


117°39'W 117°38.5'W 117°38'W 117°37.5'W 117°37'W 117°36.5'W 117°36.01'W 117°35.5'W 117°35'W 117°34.5'W 117°34'W 117°33.5'W

Operations

Sturgill Fire
Red's Horse Ranch Area
9/25/2022



Event Point		Accountable Property	
	Helispot		Pump
	Lookout		Water Tank
	Value at Risk	Event Line	
	Bridge		Completed Fuel Break
	Hazard Tree		Completed Road as Line
			Planned Burnout

Sources: Esri, USGS, CNES/Airbus DS, InterMap, Kerfoot, LINZ, NASA/METI, NASA/IGS, NLS Finland, NLSI, Ordnance Survey, SRGeoEye, The USDA Forest Service makes no warranty, expressed or implied, including the warranties of merchantability and fitness for a particular purpose, nor assumes any legal liability or responsibility for the accuracy, reliability, completeness or utility of these geospatial data, or for the improper or incorrect use of these geospatial data. These geospatial data and related maps or graphics are not legal documents and are not intended to be used as such. The data and maps may not be used to determine title, ownership, legal descriptions or boundaries, legal jurisdiction, or restrictions that may be in place on either public or private land. Natural hazards may or may not be depicted on the data and maps, and users should exercise due caution. The data are dynamic and may change over time. The user is responsible to verify the limitations of the geospatial data and to use the data accordingly.

As a work of the United States Government, these data are within the public domain of the United States. Additionally, The U.S. Forest Service waives copyright and related rights in the work worldwide through the CC0 1.0 Universal Public Domain Dedication (which can be found at <https://creativecommons.org/publicdomain/zero/1.0/>), Airbus/USGS/NGA/NASA/CQIAR/NCEAS/NLS/OS/NMA/Geodatasynthese/GSA/GSI and the GIS User Community, Esri Community Maps Contributors, State of Oregon GEO, Esri, HERE, Garmin, SafeGraph, GeoTechnologies, Inc, METI/NASA, USGS, Bureau of Land Management, EPA, NPS, US Census Bureau, USDA, Maxar

0 0.25 0.5 Miles



SA Blue GIS
9/25/2022 12:14

North American 1983 Datum, Lat/Long Grid

117°39'W 117°38.5'W 117°38'W 117°37.5'W 117°37'W 117°36.5'W 117°36.01'W 117°35.5'W 117°35'W 117°34.5'W 117°34'W 117°33.5'W

45°23.99'N
45°23.5'N
45°23'N
45°22.5'N
45°22'N
45°21.5'N
45°21'N
45°20.5'N
45°20'N
45°19.5'N
45°19'N
45°18.5'N

45°23.99'N
45°23.5'N
45°23'N
45°22.5'N
45°22'N
45°21.5'N
45°21'N
45°20.5'N
45°20'N
45°19.5'N
45°19'N
45°18.5'N