

**MAP 8**  
If the fire crosses MAP 8 or will imminently cross this MAP. Based on the anticipated fire growth many of these actions are being taken already, with those structures nearest the fire being prioritized for structure triage and prep. Point/zone protection of structures with defensive ignition operations as needed. Specific structures as follows: Litch Ranch, Deep Creek Ranch, Thorn Creek Guard Station, Cow Creek bridge, McLaren cabin

**MAP 11**  
If the fire becomes established northeast of the Snake River down drainage from the Jones Creek fire consider the following actions. Notifications to: Key values requiring protection. Assess viability of full suppression within Idaho. If point/zone protection of structures are needed the following are within the planning area: Grangeville Dispatch, Cottonwood BLM (note this is a service first fire organization with the IPNF), Grangeville dispatch, Idaho Department of Lands, Nez Perce Tribe, Idaho County Sheriff, 6 structures in Dry Creek, 4 structures in Birch Creek, 8 structures in lower Wolf Creek, 12 structures in Greta Creek

**MAP 12**  
If the fire becomes established over MAP 11 or will become established on the Payette National Forest consider the following. Notifications to: Assess viability of full suppression within Idaho. The planning area boundary follows Kleinschmidt Grade Road to Horse Mountain and back to the SE corner of the Hells Canyon Wilderness. Beyond the planning area in Indian there are numerous structures that may require point/zone protection - Payette NF and Payette dispatch and Adams County Sheriff

**MAP 13**  
If the fire becomes established west of Imnaha woods to the extent that the river corridor is no longer a viable control feature consider the following:  

- Evaluate the road system in Rich and Makin creek for indirect control features.
- Evaluate and prep FS Rd 3930 for an indirect control feature located on a major ridgeline. This road system connects back to the Idaho Power utility corridor and Hari Butte Road.
- Expand closure area.

**MAP 14**  
If the fire becomes established west of the Imnaha to the extent that this control feature is longer viable consider the following actions:  

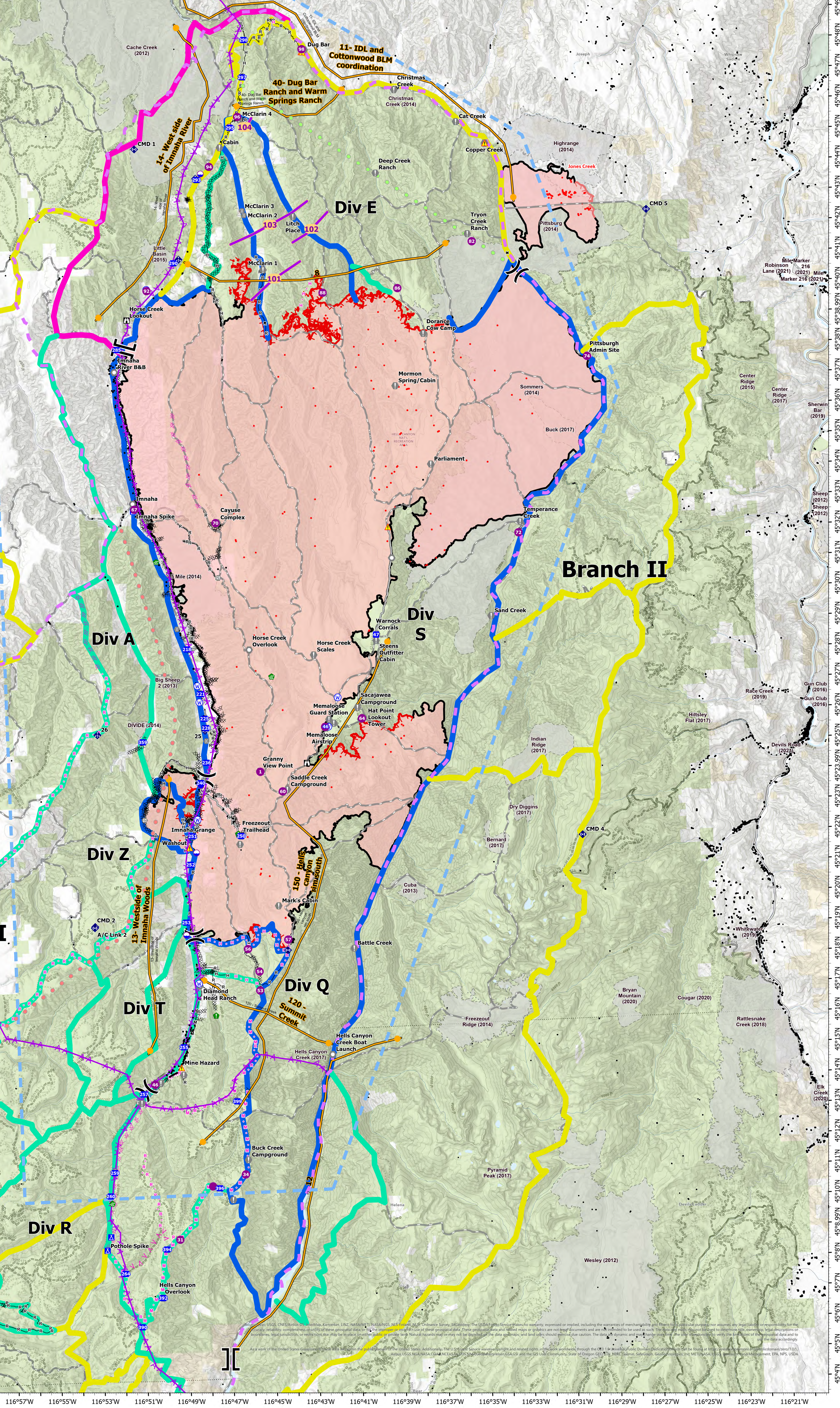
- Point protection of Buckhorn and Eureka Cabins
- Evacuation and closure of Buckhorn Campground
- Prep road and trail system along Cemetery ridge as an indirect line

**MAP 40**  
As the fire continues to move north, towards the confluence of the Imnaha and Snake Rivers provide point protection as needed for the following values: Suggested actions include point/zone protection for both Dug Bar and Warm Springs Ranch, coordinated with ignition operations as they progress down the Imnaha River.

**MAP 120**  
If the fire is established or will imminently be established in the Summit Creek drainage or Hells canyon creek drainage consider the following actions:  

- In coordination with OFSM adjust evacuation levels for Imnaha River Woods subdivision and initiate point/zone protection of homes and outbuildings.
- Consider expanding closure area to the south of Crazyman creek drainage
- In coordination with OFSM adjust evacuation levels for Imnaha River Woods subdivision and initiate point/zone protection of homes and outbuildings.
- Consider expanding closure area to the south of Crazyman creek drainage
- Coordinate with Idaho power on the potential need to shutdown utility line from Hells Canyon dam to the mouth of Crazyman creek (fire becoming established in Summit Creek is aligned to spread to the powerline corridor)
- Prepare road system from Crazyman Creek along the powerline corridor to PO Saddle and down to the Snake River for ignitions.

**MAP 150**  
The fire crosses the Hells Canyon Rim South and becomes established in the Snake River drainage. The fire crossed this MAP prior to approval of the decision and suggested actions in this MAP are being implemented. Point/zone protection of structures with defensive ignition operations as needed within Hells Canyon. All structures and developed assets are west of the Snake River unless noted. Structures east of the Snake River should be triaged as needed; coordinate with the Jones Creek incident. Specific structures as follows: Battle Creek Cabin, Hells Canyon visitor center, Memaloose Guard Station, Sacajewea Campground, Hat Point Lookout, McGaffe cabin \*\*\*East of Snake River



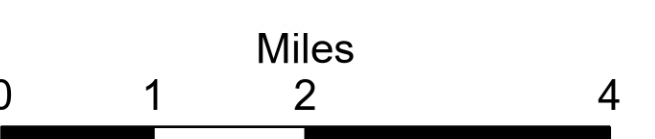
# Planning

Double Creek  
OR-WWF-000400  
09/25/22

157,717 acres at 9/24/22 2233 PDT

Nebo OR-WWF-380  
12,601 acres at  
9/21/22 0006 PDT

Sturgill OR-WWF-334  
20,192 acres at  
9/21/22 0006 PDT



- |                      |                |                      |                                 |                                   |                              |
|----------------------|----------------|----------------------|---------------------------------|-----------------------------------|------------------------------|
| Trigger Point        | IA Boundary    | Branch Break         | Gate                            | Completed Dozer Line              | Planned Road as Line         |
| Containment Strategy | Evac MAP       | Drop Point           | Bridge                          | Completed Hand Line               | Access or Improved Road      |
| Primary              | Ready          | Camp                 | Water Development or Draft Site | Completed Mixed Construction Line | Highlighted Feature          |
| Alternate            | Set            | Staging Area         | Resource Location               | Completed Road as Line            | Management Action Point      |
| Contingency          | Go             | Lookout              | Mobile Weather Unit             | Planned Dozer Line                | Aerial Hazard                |
| Emergency            | Dip Site       | Hot Spot - Spot Fire | Repeater                        | Planned Fuel Break                | Temporary Flight Restriction |
| Structure            | Value at Risk  | Value at Risk        | Hazard                          | Planned Hand Line                 | Contained                    |
| POD                  | Division Break | Landmark             | Water Source                    | Planned Mixed Construction Line   | Uncontained                  |



SA Blue GIS  
9/25/2022 1130  
Acres from IR  
North American 1983 Datum.  
LatLong Grid