

Air Operations

Double Creek
OR-WWF-000400

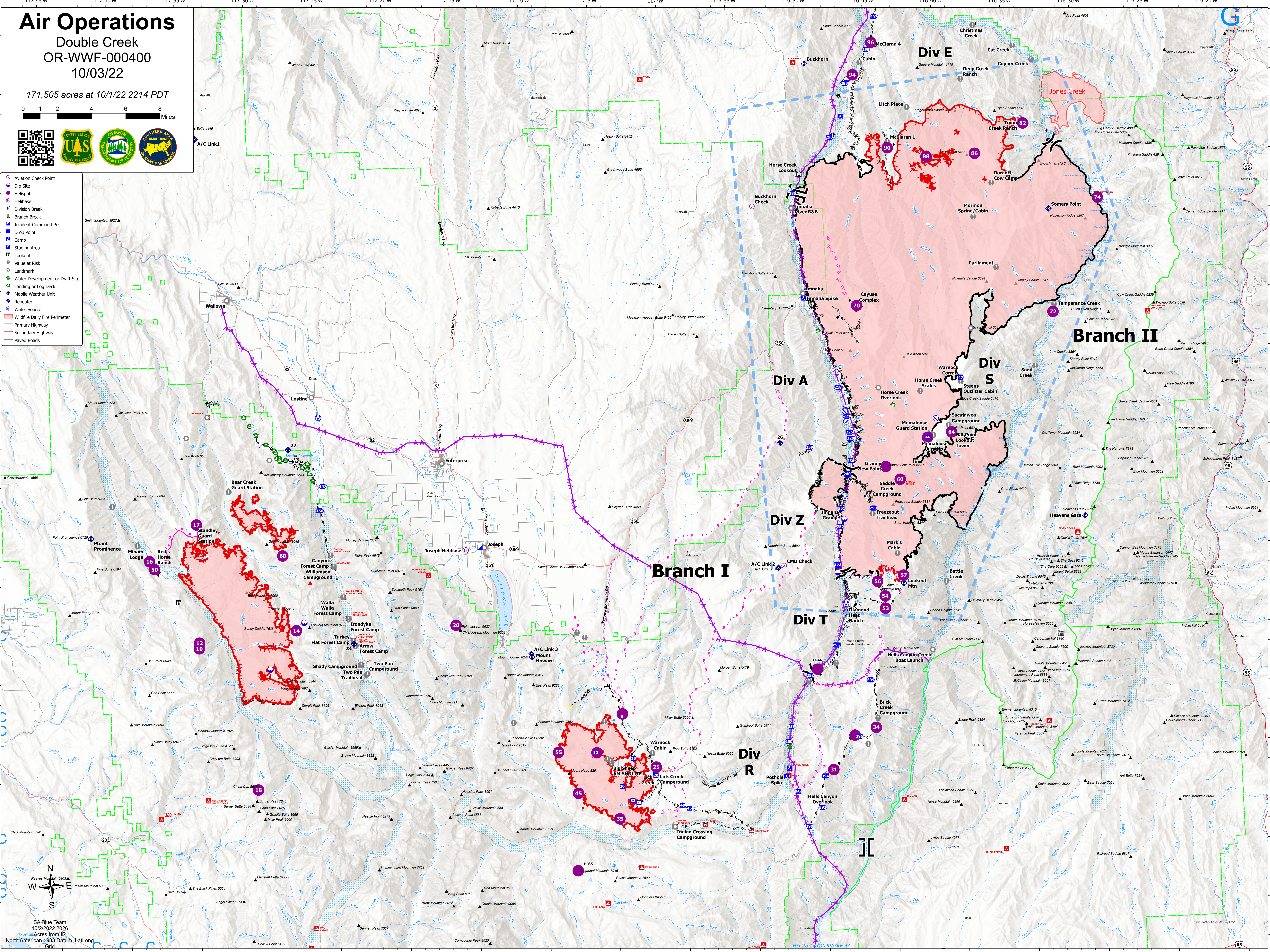
10/03/22

171,505 acres at 10/1/22 2214 PDT

0 1 2 4 6 8 Miles



- Aviation Check Point
- Dip Site
- Helispot
- Helibase
- ⌵ Division Break
- ⌵ Branch Break
- ⌵ Incident Command Post
- ⌵ Drop Point
- ⌵ Camp
- ⌵ Staging Area
- ⌵ Lookout
- ⌵ Value at Risk
- Landmark
- Water Development or Draft Site
- Landing or Log Deck
- Mobile Weather Unit
- Repeater
- Water Source
- Wildfire Daily Fire Perimeter
- Primary Highway
- Secondary Highway
- Paved Roads



SA Blue Team
10/2/2022 2026
Acres from IR
North American 1983 Datum, Lat/Long
Grid