

Ops Vicinity

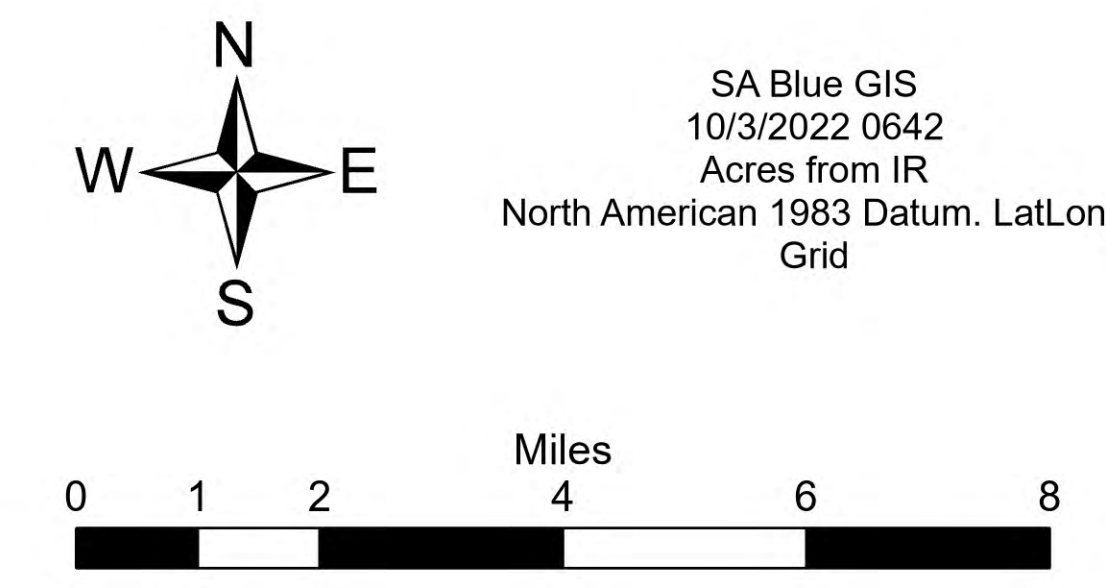
Double Creek

OR-WWF-000400
10/03/22

171,505 acres at 10/1/22 2214 PDT

- Dip Site
- Helispot
- Helibase
- Division Break
- Branch Break
- Incident Command Post
- Drop Point
- Staging Area
- Lookout
- Hot Spot - Spot Fire
- Value at Risk
- Landmark
- Gate
- Bridge
- Water Development or Draft Site
- Resource Location
- Landing or Log Deck
- Hazard Tree
- Mobile Weather Unit
- Repeater
- Hazard
- Water Source
- Completed Dozer Line
- Camp
- Staging Area
- Planned Road as Line
- Access or Improved Road
- Contained
- Uncontained
- Wildfire Daily Fire Perimeter
- Campground
- National Park Service
- Forest Service
- U.S. Fish and Wildlife Service
- Visitor Center
- Picnic Site
- Boating Site
- Interpretive Site
- Snowpark
- Campground
- Group Campground
- Trailhead
- Visitor Center
- Picnic Site
- Boating Site
- Interpretive Site
- Snowpark
- Campground
- Group Campground
- Trailhead
- Visitor Center
- Picnic Site
- Boating Site
- Interpretive Site
- Snowpark
- Campground
- Group Campground
- Trailhead

• 0	• 17	• 34	• 51	• 68	• 85	• 102
• 1	• 18	• 35	• 52	• 69	• 86	• 103
• 2	• 19	• 36	• 53	• 70	• 87	• 104
• 3	• 20	• 37	• 54	• 71	• 88	• 105
• 4	• 21	• 38	• 55	• 72	• 89	• 106
• 5	• 22	• 39	• 56	• 73	• 90	• 107
• 6	• 23	• 40	• 57	• 74	• 91	• 108
• 7	• 24	• 41	• 58	• 75	• 92	• 109
• 8	• 25	• 42	• 59	• 76	• 93	• 110
• 9	• 26	• 43	• 60	• 77	• 94	• 111
• 10	• 27	• 44	• 61	• 78	• 95	• 112
• 11	• 28	• 45	• 62	• 79	• 96	• 113
• 12	• 29	• 46	• 63	• 80	• 97	• 114
• 13	• 30	• 47	• 64	• 81	• 98	• 115
• 14	• 31	• 48	• 65	• 82	• 99	• 116
• 15	• 32	• 49	• 66	• 83	• 100	• 117
• 16	• 33	• 50	• 67	• 84	• 101	• 118



SA Blue GIS
10/3/2022 0642
Acres from IR
North American 1983 Datum, Lat/Long
Grid

