



## **DOUBLE CREEK**

OR-WWF-000400 P6P1E522 (0616)

Sturgill OR-WWF-000334 P6P02N22 (0616)

Nebo OR-WWF-000380 P6P06W22 (0616)

## **Incident Action Plan**

**Monday, October 3, 2022**

**0700 – 1900**

**Incident Electronic Products and Information (Check-in, IAP, Maps)**



**Public Information Line:**

**Phone 541-216-4579**

**Email: [2022.doublecreek@firenet.gov](mailto:2022.doublecreek@firenet.gov)**

# INCIDENT OBJECTIVES (ICS 202)

<b>1. Incident Name:</b> Double Creek	<b>2. Operational Period:</b> Date From: 10/03/2022 Date To: 10/03/2022 Time From: 0700 Time To: 1900
--	--

**3. Objective(s):**

Leader's Intent:

- Professional responders are expected to conduct themselves in a professional manner at all times. We shall foster an environment that promotes teamwork, respect and is free from discrimination and harassment. A "zero tolerance" policy will apply to behavior determined to be inappropriate.
- Ensure the Medical Plan, 8-line and short haul operations are well understood and all assigned resources are confident in the application.

Management Objectives:

- Human life is the most valuable resource to be protected, consequently accept no unnecessary risk. The only acceptable risk is 1) tactics that have high probability of success 2) on actions that meaningfully contribute to objectives or protection of high value resources (responders, public, communities) and 3) minimize exposure to incident responders.
- Ensure proactive communication and coordination occurs regarding the incident's status and strategy with agency administrators, cooperators, communities and the public through timely press releases, informational updates, social media, meetings and other informational sharing platforms.
- Protect private lands within and adjacent to uncontained/uncontrolled fire perimeter lines where the possibility of fire spread exists.
- Work with Resource Advisors and minimize suppression repair impacts in the Imnaha River and tributaries to protect salmon, steelhead and Bull Trout habitat.
- Protect known historic and pre-contact cultural sites by minimizing fire spread to the sites where possible, minimize suppression impacts and work with resource advisors.
- Keep fire from impacting Forest Service infrastructure and values of concern, including for the Double Creek Fire: Memaloose Campground and Guard Station, Hat Point Lookout, Sacajewea and Saddle Creek Campgrounds. Sturgill Fire: Minam River Lodge, Red's Horse Ranch, Standley and Bear Creek Guard Stations. Nebo Fire: Lick Creek Guard Station and Campground, Salt Creek Summit warming hut and groomer shed, Wing Ridge, Redmont Shelter ski huts, and Big Sheep Camp Site.
- Support suppression operations as requested in the delegation and provide initial attack to new unplanned ignitions within the designated geographic area and requests for assistance from the local agencies with jurisdiction. Prioritize response to ignitions that threaten infrastructure, recreational sites and private lands.
- Implement and maintain effective COVID-19 prevention and mitigation measures that follow CDC guidelines and interagency protocols.
- Maintain fiscal accountability and cost effectiveness as an important component of the decision-making process for the incident.
- Continue suppression repair operations on fireline where containment has been identified.

**4. Operational Period Command Emphasis:**

Control Objectives

Double Creek: Reinforce and secure the northern end of the fire area. Keep active fire from reaching private lands and structures. Keep fire within the confluence of the Imnaha and Snake Rivers, use natural features and Snake River as containment lines for east flank, keep fire south of Imnaha and Snake River confluence using natural control features. Patrol and monitor southern end (Divs Q/T) to prevent future growth.

Nebo: Monitor from helicopter.

Sturgill: Monitor from helicopter. Keep active fire from impacting private lands and structures. Goat: Patrol and monitor northern end with crews to keep fire from impacting values at risk.

General Situational Awareness

**5. Site Safety Plan Required?** Yes  No

**Approved Site Safety Plan(s) Located at:**

**6. Incident Action Plan** (the items checked below are included in this Incident Action Plan):

<input checked="" type="checkbox"/> ICS 203	<input type="checkbox"/> ICS 207	<u>Other Attachments:</u>
<input checked="" type="checkbox"/> ICS 204	<input type="checkbox"/> ICS 208	<input type="checkbox"/> _____
<input checked="" type="checkbox"/> ICS 205	<input checked="" type="checkbox"/> Map/Chart	<input type="checkbox"/> _____
<input type="checkbox"/> ICS 205A	<input checked="" type="checkbox"/> Weather Forecast/Tides/Currents	<input type="checkbox"/> _____
<input checked="" type="checkbox"/> ICS 206		<input type="checkbox"/> _____

**7. Prepared by:** Name: Jeff Stein Position/Title: PSC3 Signature:

**8. Approved by Incident Commander:** Name: Jason Lyman Signature:

ICS 202	IAP Page <u>2</u>	Date/Time: 10/02/2022 1830
---------	-------------------	----------------------------

<b>ORGANIZATIONAL ASSIGNMENT LIST (ICS 203)</b>		1. Incident Name: Double Creek		2. Date Prepared: 10/02/2022	
3. Time Prepared: 1900 hrs		4. Operational Period: DATE: 10/03/2022 TIME: 0700-1900			
5. Incident Commanders			9. Operations Section		
Incident Commander	Jason Lyman, Isaiah Jimenez (t)		Operations Chief	Chad Rott	
Safety Officer	Pat Sheridan		Branch I		
Information Officer	Dean Hazen		Branch Director		
Liaison Officers	Scott Ray (t)		DIVS A/Z	UNSTAFFED	
HRSP			DIVS Q/T	Daniel Yturriondodeitia	
6. Agency Representatives			DIVS R	UNSTAFFED	
Agency	Name		Branch II		
USFS Agency Administrator	Anthony Botello, Shaun McKinney		Branch Director		
USFS Agency Representative	Brian Anderson		DIVS E	Mike Johnson	
ODF Agency Administrator	Matt Howard		DIVS S	UNSTAFFED	
ODF Deputy Agency Administrator	Tracy Brostrom		Branch III		
National Guard	Major Joshua Reece		Branch Director		
Landowner Liaison			DIVS NEBO	UNSTAFFED	
Lead READ	Cara Lewis		DIVS LOSTINE-STURGILL-GOAT	Kit Compton	
7. Planning Section			Sturgill Structure Group	Thomas Goheen, Nate Ochs (t)	
Chief	Jeff Stein, Tim Tran (t)		Branch IV		
Resource Unit			Branch Director	Alan Hill, Matt Johnson (t)	
Documentation Unit			DIVS SUPPRESSION REPAIR	Tim Fondriest	
SCKN			DIVS Staging		
Demob Unit			Initial Attack		
Situation Unit			d. Air Operations Branch		
FBAN			AOBD	Kelly Rudger	
GISS	Allen Smith, Darren Stebbins (t), Bobby Dennett (t)		ASGS		
ITSS			10. Finance Section		
IMET			Chief	A. Bryant (t), Linzi Smith (V)	
TNSP			Time Unit	John Alcorn	
8. Logistics Section			Personnel Time	Teri Alcorn, Lodisca Beichner (t), Linzy Scott (V)	
Chief	Brent Spencer, Shaun Oliver		Equipment Time	Sam Le, Lili McGary, Luis Carrillo (V), Sarah Rietz, Kimberly Irons (t)	
Deputy Chief	Alix Christman (t)		Cost Unit	K. Patterson	
Medical Unit Leader	Frank Abel, A. Skube (t), Winter West (t)		Comp/Claims	John Alcorn	
Supply Unit	Steve Blatt		Procurement Unit	Sherry Helmick, Kevin Jackson (t)	
Communications	Barry Mathias, Mike Hunter		Inbox Manager	Nancy Shadomy (V)	
Facilities	Jamie Copple				
Ground Support	Evan Johnson				
Food Unit	Karen Hauter				
SECM	Shaun Oliver				

Prepared by (Resource Unit Leader)	/s/ Tim Tran
------------------------------------	--------------

Spot Forecast for **Double Creek Fire**...USFS

National Weather Service Pendleton OR  
858 AM PDT Sun Oct 2 2022

.DISCUSSION...Dry and stable conditions expected through the forecast period. There will be some lingering high clouds until later this afternoon as the low continues to move east. Winds will be light then increase to 5 mph and be from the northeast by this afternoon then south overnight. Daytime high will be in the upper 60s and RH values will be in the high 20% to low 30% with low to moderate overnight recoveries. Tuesdays high will be in the upper 60s to low 70s with daytime RH values in the high 20% to low 30%. Winds will from the south shifting to the northeast at 5 mph by the afternoon.

.MONDAY...

Sky/weather.....Sunny (0-10 percent).  
CWR.....0 percent.  
LAL.....1.  
Max temperature.....66-69.  
Min humidity.....29-34 percent.  
Wind (20 ft).....Light winds becoming northeast around 5 mph in the afternoon.  
Ridgetop wind.....Light winds becoming northeast around 8 mph in the afternoon.  
Mixing height.....4400 ft AGL early in the morning.  
Transport winds.....Light winds.  
Haines Index.....2 or very low potential for large plume dominated fire growth.

.MONDAY NIGHT...

Sky/weather.....Mostly clear (0-10 percent).  
CWR.....0 percent.  
LAL.....1.  
Min temperature.....49-52.  
Max humidity.....56-61 percent.  
Wind (20 ft).....Northeast winds 5 to 6 mph shifting to the south around 5 mph overnight.  
Ridgetop wind.....Northeast winds 6 to 8 mph shifting to the south around 5 mph overnight.  
Mixing height.....2700 ft AGL early in the evening.  
Transport winds.....Light winds.  
Haines Index.....3 or very low potential for large plume dominated fire growth.

.TUESDAY...

Sky/weather.....Sunny (0-10 percent).  
CWR.....0 percent.  
LAL.....1.  
Max temperature.....69-72.  
Min humidity.....26-31 percent.  
Wind (20 ft).....South winds around 5 mph shifting to the northeast in the afternoon.  
Ridgetop wind.....South winds around to 8 mph shifting to the northeast in the afternoon.  
Mixing height.....5900 ft AGL early in the morning.  
Transport winds.....Light winds.  
Haines Index.....3 or very low potential for large plume dominated fire growth.

.FORECAST DAYS 3 THROUGH 7...

.WEDNESDAY...

Mostly clear. Lows around 50. Highs around 70. Light winds.

.THURSDAY...

Mostly clear. Lows in the lower 50s. Highs around 70. Light winds.

.FRIDAY...

Partly cloudy. Lows in the lower 50s. Highs in the upper 60s. Light winds.

.SATURDAY...

Mostly clear. Lows in the lower 50s. Highs in the upper 60s.

.SUNDAY...

Mostly clear. Lows around 50. Highs in the upper 60s.

## Spot Forecast for **Sturgill Fire**...USFS

National Weather Service Pendleton OR

912 AM PDT Sun Oct 2 2022

.DISCUSSION...Dry and stable conditions expected through the forecast period. There will be some lingering high clouds until later this afternoon as the low continues to move east. Winds today will be 5 mph from the southeast to start before shifting to the north this afternoon. Daytime temperatures will be in the mid 60s with RH values in the lower 30% with low overnight recoveries. Winds this evening will shift east at 5 mph before shifting back to the southeast overnight. Tuesday will be in the mid 60s with daytime RH values in the high 20% to low 30% and southeast winds at 5 to 6 mph shifting to the west by the afternoon.

.MONDAY...

Sky/weather.....Sunny (5-15 percent).

CWR.....0 percent.

LAL.....1.

Max temperature....64-67.

Min humidity.....31-36 percent.

Wind (20 ft).....Southeast winds 5 to 6 mph shifting to the north in the afternoon.

Ridgetop wind.....Southeast winds 7 to 8 mph shifting to the north in the afternoon.

Mixing height.....5100 ft AGL early in the morning.

Transport winds....Light winds.

Haines Index.....3 or very low potential for large plume dominated fire growth.

.MONDAY NIGHT...

Sky/weather.....Mostly clear (5-15 percent).

CWR.....0 percent.

LAL.....1.

Min temperature....Around 50.

Max humidity.....54-59 percent.

Wind (20 ft).....East winds around 5 mph shifting to the southeast overnight.

Ridgetop wind.....East winds around 7 mph shifting to the

southeast overnight.

Mixing height.....3200 ft AGL early in the evening.

Transport winds.....Light winds.

Haines Index.....2 or very low potential for large plume  
dominated fire growth.

.TUESDAY...

Sky/weather.....Sunny (0-10 percent).

CWR.....0 percent.

LAL.....1.

Max temperature.....65-68.

Min humidity.....29-34 percent.

Wind (20 ft).....Southeast winds 5 to 6 mph shifting to the west  
in the afternoon.

Ridgetop wind.....Southeast winds 7 mph shifting to the west  
in the afternoon.

Mixing height.....6300 ft AGL early in the morning.

Transport winds.....Light winds.

Haines Index.....3 or very low potential for large plume  
dominated fire growth.

.FORECAST DAYS 3 THROUGH 7...

.WEDNESDAY...

Mostly clear. Lows in the upper 40s. Highs in the mid 60s. Light  
winds.

.THURSDAY...

Mostly clear. Lows in the upper 40s. Highs in the mid 60s. Light  
winds.

.FRIDAY...

Partly cloudy. Lows in the upper 40s. Highs in the mid 60s. South  
winds around 5 mph.

.SATURDAY...

Mostly clear. Lows in the upper 40s. Highs in the mid 60s.

.SUNDAY...

Mostly clear. Lows in the mid 40s. Highs in the lower 60s.

<b>Management Action Points – Evacuation Considerations</b>		
<b>MAP</b>	<b>Condition</b>	<b>Actions</b>
<b>8</b>	If the fire crosses MAP 8 or will imminently cross this MAP. Based on the anticipated fire growth many of these actions are being taken already, with those structures nearest the fire being prioritized for structure triage and prep.	<b>Point/zone protection of structures with defensive ignition operations as needed. Specific structures as follows:</b> Litch Ranch, Deep Creek Ranch, Thorn Creek Guard Station, Cow Creek bridge, McLaren cabin
<b>11</b>	If the fire becomes established northeast of the Snake River down drainage from the Jones Creek fire consider the following actions.	<b>Notifications to:</b> Key values requiring protection. Assess viability of full suppression within Idaho. If point/zone protection of structures are needed the following are within the planning area: Grangeville Dispatch, Cottonwood BLM (note this is a service first fire organization with the IPNF), Grangeville dispatch, Idaho Department of Lands, Nez Perce Tribe, Idaho County Sheriff, 6 structures in Dry Creek, 4 structures in Birch Creek, 8 structures in lower Wolf Creek, 12 structures in Greta Creek
<b>12</b>	If the fire becomes established over MAP 11 or will become established on the Payette National Forest consider the following.	<b>Notifications to:</b> Assess viability of full suppression within Idaho. The planning area boundary follows Kleinschmidt Grade Road to Horse Mountain and back to the SE corner of the Hells Canyon Wilderness. Beyond the planning area in Indian there are numerous structures that may require point/zone protection - Payette NF and Payette dispatch and Adams County Sheriff
<b>13</b>	If the fire becomes established west of Imnaha woods to the extent that the river corridor is no longer a viable control feature consider the following:	<ul style="list-style-type: none"> <li>• Evaluate the road system in Rich and Makin creek for indirect control features.</li> <li>• Evaluate and prep FS Rd 3930 for an indirect control feature located on a major ridgeline. This road system connects back to the Idaho Power utility corridor and Harl Butte Road.</li> <li>• Expand closure area.</li> </ul>
<b>14</b>	If the fire becomes established west of the Imnaha to the extent that this control feature is longer viable consider the following actions:	<ul style="list-style-type: none"> <li>• Point protection of Buckhorn and Eureka Cabins</li> <li>• Evacuation and closure of Buckhorn Campground</li> <li>• Prep road and trail system along Cemetery ridge as an indirect line</li> </ul>
<b>40</b>	As the fire continues to move north, towards the confluence of the Imnaha and Snake Rivers provide point protection as needed for the following values:	Suggested actions include point/zone protection for both Dug Bar and Warm Springs Ranch, coordinated with ignition operations as they progress down the Imnaha River.

<p><b>120</b></p>	<p>If the fire is established or will imminently be established in the Summit Creek drainage or Hells canyon creek drainage consider the following actions:</p>	<ul style="list-style-type: none"> <li>• In coordination with OFSM adjust evacuation levels for Imnaha River Woods subdivision and initiate point/zone protection of homes and outbuildings.</li> <li>• Consider expanding closure area to the south of Crazyman creek drainage</li> <li>• Coordinate with Idaho power on the potential need to shutdown utility line from Hells Canyon dam to the mouth of Crazyman creek (fire becoming established in Summit Creek is aligned to spread to the powerline corridor)</li> <li>• Prepare road system from Crazyman Creek along the powerline corridor to PO Saddle and down to the Snake River for ignitions.</li> </ul>
<p><b>150</b></p>	<p>The fire crosses the Hells Canyon Rim South and becomes established in the Snake River drainage. The fire crossed this MAP prior to approval of the decision and suggested actions in this MAP are being implemented.</p>	<p>Point/zone protection of structures with defensive ignition operations as needed within Hells Canyon. All structures and developed assets are west of the Snake River unless noted. Structures east of the Snake River should be triaged as needed; coordinate with the Jones Creek incident. Specific structures as follows: Battle Creek Cabin, Hells Canyon visitor center, Memaloose Guard Station, Sacajewea Campground, Hat Point Lookout, McGaffe cabin ***East of Snake River</p>



## HEALTH AND SAFETY MESSAGE

*SAFETY* starts with *YOU*

We are ALL accountable for SAFE behaviors

INCIDENT: <b>Double Creek Fire</b>	Operational Period: <b>10/03/2022</b>
------------------------------------	---------------------------------------

Hypothermia occurs when your core body temperature falls below normal. It can easily happen in cold winds or wetness. Hypothermia can also occur in moderately cool temperatures, particularly if coupled with dehydration. People tend to forget to drink on cool, wet days, and can get hypothermic even when the temperature stays well above freezing.

### *Symptoms of hypothermia include:*

- Slurred speech.
- Weakness and loss of coordination.
- Confusion.
- Irrational behavior.
- Uncontrollable shivering (although, at extremely low body temperatures, shivering may stop).
- Pale and cold skin.
- Drowsiness – especially in more severe stages.
- Slowed breathing or heart rate.

Your body automatically begins to shiver to warm itself. As your energy is used up to keep warm, you may reach a point where your body will be unable to warm itself. If left untreated, your body will gradually shut down; and you can die.

### *You can avoid hypothermia with the following precautions:*

- Stay hydrated.
- Avoid fatigue.
- Avoid cold winds.
- Change out of wet clothes.
- Be aware of the symptoms and act immediately upon their onset.

### *If you recognize hypothermia, take the following steps:*

- Move the patient to shelter.
- Remove wet clothes and replace them with warm, dry garments.
- If the victim is alert, give them food and warm liquids to drink.

*Safety Officers: Pat Sheridan, Chad Hyatt (T)*

<b>DIVISION ASSIGNMENT LIST</b> ICS-204		1. BRANCH <b>I</b>	2. DIVISION/GROUP <b>Q/T</b>
3. INCIDENT NAME <b>Double Creek</b>		4. OPERATIONAL PERIOD <b>Date: 10/03/2022</b> <b>Time: 0700-1900</b>	

OPERATIONS PERSONNEL	
OPERATIONS: Chad Rott PLANNING OPERATIONS: Tim Tran (t) STRATEGIC OPERATIONS: DIVISION/GROUP SUPERVISOR: Daniel Yturriondodeltia	BRANCH DIRECTOR: AIR OPERATIONS BRANCH DIRECTOR: Kelly Rudger

RESOURCES ASSIGNED THIS PERIOD					
STRIKE TEAM/TASK FORCE/RESOURCE DESIGNATOR	Last Shift	LEADER	NUMBER PERSONS	DROP OFF POINT/TIME	PICK UP POINT/TIME
ENG4 E-176 Flashover	10/10	Travis Grunenfelder	3	JOSEPH ICP/0700	JOSEPH ICP/1900
ENG6 E-143 Fire Works 2	10/14	Devon Venable	2	JOSEPH ICP/0700	JOSEPH ICP/0700
WTS2 E-17 Christman Trucking	10/05	David Nelson	1	JOSEPH ICP/0700	JOSEPH ICP/1900
WTS2 E-16 Minam River	10/14	Ken Waters	1	JOSEPH ICP/0700	JOSEPH ICP/1900
SOF2 (t) O-380 Imnaha	10/05	Chad Hyatt	1	JOSEPH ICP/0700	JOSEPH ICP/1900
Medic Team E-227 Medic Team 44	10/10	Heather Buben	2	JOSEPH ICP/0700	JOSEPH ICP/1900
AMBU E-344 AMBU 15	10/08	Sherry Amerman	2	JOSEPH ICP/0700	JOSEPH ICP/1900

**CONTROL OPERATIONS:**  
 Maintain a constant watch on fire areas along Long Ridge and Freezeout Creek drainage.  
 Identify any direct fire edge containment and/or mop up opportunities and implement appropriately.  
 Assist with Suppression Repair Branch as able around Diamond Head Range and Imnaha River Woods.

**SPECIAL INSTRUCTIONS:** Work closely with adjoining divisions to provide for efficient resource sharing.  
 Utilize Field Maps to capture any remaining information regarding suppression impacts or any site/location not yet identified.  
 Plan for efficient backhaul of pumps, drop tanks, hose, supplies, trash, etc.

FUNCTION	RX Freq/RX Tone	TX Freq/TX Tone	CHAN	FUNCTION	RX Freq/RX Tone	TX Freq/TX Tone	CHAN
COMMAND 3	170.6000 N/131.8	164.9625 N/114.8	3				
TACTICAL 8	168.2000 N/136.5	168.2000 N/136.5	8				
AIR TO GROUND PRI	166.6125 N	166.6125 N	13				
AIR TO GROUND TAC	168.3375 N	168.3375 N	14				

PREPARED BY (RESOURCE UNIT LEADER) Tim Tran (t)	APPROVED BY (PLANNING SECTION CHIEF) Jeff Stein	DATE 10/02/2022	TIME 2000
--	--	--------------------	--------------

<b>DIVISION ASSIGNMENT LIST</b> ICS-204	1. BRANCH <b>II</b>	2. DIVISION/GROUP <b>E</b>
	3. INCIDENT NAME <b>Double Creek</b>	
4. OPERATIONAL PERIOD <b>Date: 10/03/2022</b> <b>Time: 0700-1900</b>		

OPERATIONS PERSONNEL	
OPERATIONS: Chad Rott    PLANNING OPERATIONS: Tim Tran (t) STRATEGIC OPERATIONS: DIVISION/GROUP SUPERVISOR: Mike Johnson	BRANCH DIRECTOR:  AIR OPERATIONS BRANCH DIRECTOR: Kelly Ruderger

RESOURCES ASSIGNED THIS PERIOD					
STRIKE TEAM/TASK FORCE/RESOURCE DESIGNATOR	Last Shift	LEADER	NUMBER PERSONS	DROP OFF POINT/TIME	PICK UP POINT/TIME
HC2IA C-35 NW UMF Veteran Crew	10/09	Samuel Bowen	22	JOSEPH ICP/0700	JOSEPH/ ICP1900
ENG6 E-229 OR-WWF-653	10/10	Robert Whitehall	4	JOSEPH ICP/0700	JOSEPH/ ICP1900
FOBS 0-394	10/04	David Canning	1	JOSEPH ICP/0700	JOSEPH ICP/0700
SOF2 (t) O-380	10/05	Chad Hyatt	1	JOSEPH ICP/0700	JOSEPH/ ICP1900
REMS E-288 REMS 31 EMPF	10/10	Amanda Bowen	4	JOSEPH ICP/0700	JOSEPH/ ICP1900
Medic Team E-223 Medic Team 42	10/10	Kris Morgan	2	JOSEPH ICP/0700	JOSEPH/ ICP1900
AMB2 E-153 AMBU 11	10/17	Sean Cariss	2	JOSEPH ICP/0700	JOSEPH/ ICP1900
Medic Team E-224 Medic Team 43	10/10	Chris Howard	2	JOSEPH ICP/0700	JOSEPH ICP/0700

**CONTROL OPERATIONS:**  
Aerial recon with Operations and Div E planned.

Plan for several resources to coyote for a few days on Div E.

Cold trail to the south, east and west of McClaran 1.

Monitor for any fire progression near Litch Place and Deep Creek Ranch.

Reference Trigger Point lines, detailed on the Field Maps Ops map, for decision points regarding structure "prep and leave" actions.

**SPECIAL INSTRUCTIONS:** Work closely with adjoining divisions to provide for efficient resource sharing.  
Utilize Field Maps to capture any remaining information regarding suppression impacts or any site/location not yet identified.  
Plan for efficient backhaul of pumps, drop tanks, hose, supplies, trash, etc.

FUNCTION	RX Freq/RX Tone	TX Freq/TX Tone	CHAN	FUNCTION	RX Freq/RX Tone	TX Freq/TX Tone	CHAN
COMMAND 1	170.6000 N/131.8	164.9625 N/123.0	1				
TACTICAL 9	168.6000 N/136.5	168.6000 N/136.5	9				
AIR TO GROUND PRI	166.6125 N	166.6125 N	13				
AIR TO GROUND TAC	168.3375 N	168.3375 N	14				

PREPARED BY (RESOURCE UNIT LEADER) Tim Tran (t)	APPROVED BY (PLANNING SECTION CHIEF) Jeff Stein	DATE 10/02/2022	TIME 2000
--	--	--------------------	--------------

# DIVISION ASSIGNMENT LIST

ICS-204

1. BRANCH

III

2. DIVISION/GROUP

Lostine

3. INCIDENT NAME

Double Creek

4. OPERATIONAL PERIOD

Date: 10/03/2022

Time: 0700-1900

### OPERATIONS PERSONNEL

OPERATIONS: Chad Rott    PLANNING OPERATIONS: Tim Tran (t)

STRATEGIC OPERATIONS:

DIVISION/GROUP SUPERVISOR: Kit Compton 10/13

BRANCH DIRECTOR:

AIR OPERATIONS BRANCH DIRECTOR: Kelly Ruderger

### RESOURCES ASSIGNED THIS PERIOD

STRIKE TEAM/TASK FORCE/RESOURCE DESIGNATOR	Last Shift	LEADER	NUMBER PERSONS	DROP OFF POINT/TIME	PICK UP POINT/TIME
ENG6 E-271 Eagle Cap	10/20	Joe Rivera	3	JOSEPH ICP/0700	JOSEPH ICP/1900
ENG4 E-162 Archer Mtn 311	10/10	Tom Matthews	4	JOSEPH ICP/0700	JOSEPH ICP/1900
ENG4 E-165 Fire Works Brush 410	10/04	Scott Halsey	3	JOSEPH ICP/0700	JOSEPH ICP/1900
ENG4 E-175 Chewack Wildfire	10/12	Greg Isaac	3	JOSEPH ICP/0700	JOSEPH ICP/1900
ENG4 E-178 Eagle Cap	10/23	Ezra McIntosh	3	JOSEPH ICP/0700	JOSEPH ICP/1900
CHP2 E-348 Big Bark Chipping Services	10/10	Adan Morales-Curiel	3	JOSEPH ICP/0700	JOSEPH ICP/0700
LOGL E-9005 Henderson-3740 Loader	10/19	Don Devore	1	JOSEPH ICP/0700	JOSEPH ICP/1900
LOGL E-9027 Henderson Logging	10/04	Brian Phillips	1	JOSEPH ICP/0700	JOSEPH ICP/1900
LOGL E-9032 Henderson Logging CAT Log Loader	10/10	Rick Berend	1	JOSEPH ICP/0700	JOSEPH ICP/1900
SKD1 E-9007 Henderson-Skidder 848H	10/16	Clayton Allen	1	JOSEPH ICP/0700	JOSEPH ICP/1900
LOGT E-9028 Henderson Logging	10/10	Ethan Lowe	1	JOSEPH ICP/0700	JOSEPH ICP/1900
LOGT E-9030 Henderson Logging 2013 Peterbilt	10/10	Jess Chandler	1	JOSEPH ICP/0700	JOSEPH ICP/1900
LOGT E-9031 Henderson Logging 2016 Peterbilt	10/10	Kevin Galloway	1	JOSEPH ICP/0700	JOSEPH ICP/1900
LOGT E-9033 Henderson Logging 2006 Peterbilt 379	10/10	Lance Whitmore	1	JOSEPH ICP/0700	JOSEPH ICP/1900
DUMP E-9017 Henderson Dump Truck	10/16	Kim West	1	JOSEPH ICP/0700	JOSEPH ICP/1900
REAF O-476	10/11	Jason Wright	1	JOSEPH ICP/0700	JOSEPH ICP/0700
REAF O-471	10/08	Cynthia Armentrout	1	JOSEPH ICP/0700	JOSEPH ICP/0700
Medic Team E-305 Medic Team 47	10/04	Brennen Hill	2	JOSEPH ICP/0700	JOSEPH ICP/1900
AMBU E-319 AMBU 14	10/12	Mike Stadler	2	JOSEPH ICP/0700	JOSEPH ICP/1900

### CONTROL OPERATIONS:

Continue hauling from log deck locations along shaded fuel break.

Assist with facilitating Suppression Repair operations.

### SPECIAL INSTRUCTIONS:

Work closely with adjoining divisions to provide for efficient resource sharing.

Utilize Field Maps to capture any remaining information regarding suppression impacts or any site/location not yet identified.

Plan for efficient backhaul of pumps, drop tanks, hose, supplies, trash, etc.

FUNCTION	RX Freq/RX Tone	TX Freq/TX Tone	CHAN	FUNCTION	RX Freq/RX Tone	TX Freq/TX Tone	CHAN
COMMAND	173.4500 N/131.8	163.6875 N/110.9	5				
TACTICAL	166.7750N/136.5	166.7750 N/136.5	11				
AIR TO GROUND PRI	166.6125 N	166.6125 N	13				
AIR TO GROUND TAC	168.3375 N	168.3375 N	14				

PREPARED BY (RESOURCE UNIT LEADER)

Tim Tran (t)

APPROVED BY (PLANNING SECTION CHIEF)

Jeff Stein

DATE

10/02/2022

TIME

2000

# DIVISION ASSIGNMENT LIST

ICS-204

1. BRANCH <div style="text-align: center; font-size: 24pt; font-weight: bold;">III</div>	2. DIVISION/GROUP <div style="text-align: center; font-weight: bold;">Sturgill Structure Group</div>
3. INCIDENT NAME <div style="text-align: center; font-size: 18pt; font-weight: bold;">Double Creek</div>	4. OPERATIONAL PERIOD <div style="text-align: center; font-weight: bold;">Date: 10/03/2022 Time: 0700-1900</div>

OPERATIONS PERSONNEL

OPERATIONS: Chad Rott    PLANNING OPERATIONS: Tim Tran (t) STRATEGIC OPERATIONS: DIVISION/GROUP SUPERVISOR: Thomas Goheen, Nate Ochs (t)	BRANCH DIRECTOR:  AIR OPERATIONS BRANCH DIRECTOR: Kelly Rudger
--	--

RESOURCES ASSIGNED THIS PERIOD

STRIKE TEAM/TASK FORCE/RESOURCE DESIGNATOR	Last Shift	LEADER	NUMBER PERSONS	DROP OFF POINT/TIME	PICK UP POINT/TIME
WFM 0-501 White River	10/13	Alex Ferneti	8		
HRAP A-174.7	10/14	Daniel Bark	1		
HRAP A-174.9	10/14	George Nagelson	1		
HRAP A-174.11	10/14	Eric Franta	1		
HRAP 0-500.4	10/12	Tim Tran	1		
HECM(t) O-489	10/10	Anthom Weaver	1		
Medic Team E-228 Medic Team 45	10/10	Melissa Brewer	2		

**CONTROL OPERATIONS:**

Sat phone # 619-637-5297

Continue to improve around structures.

Monitor fire progression and utilize structure protection system in place if necessary.

**SPECIAL INSTRUCTIONS:**

Monitor fire activity along Minam River drainage and keep ops informed of changes.

Coordinate close with helibase and utilize aircraft as needed in order to support crews and protect structure area.

FUNCTION	RX Freq/RX Tone	TX Freq/TX Tone	CHAN	FUNCTION	RX Freq/RX Tone	TX Freq/TX Tone	CHAN
COMMAND	173.4500 N/131.8	163.6875 N/110.9	5				
TACTICAL	166.7250 N/136.5	166.7250 N/136.5	10				
AIR TO GROUND PRI	166.6125 N	166.6125 N	13				
AIR TO GROUND TAC	168.3375 N	168.3375 N	14				

PREPARED BY (RESOURCE UNIT LEADER) Tim Tran (t)	APPROVED BY (PLANNING SECTION CHIEF) Jeff Stein	DATE 10/02/2022	TIME 2000
--	--	--------------------	--------------

# DIVISION ASSIGNMENT LIST

ICS-204

1. BRANCH  
**IV**

2. DIVISION/GROUP  
**Suppression Repair**  
Page 1 of 3

3. INCIDENT NAME

**Double Creek**

4. OPERATIONAL PERIOD

**Date: 10/03/2022**  
**Time: 0700-1900**

**OPERATIONS PERSONNEL**

OPERATIONS: Chad Rott    PLANNING OPERATIONS: Tim Tran (t)  
STRATEGIC OPERATIONS:  
DIVISION/GROUP SUPERVISOR: Tim Fondriest 10/3, Eric Panebaker 10/07

BRANCH DIRECTOR:  
AIR OPERATIONS BRANCH DIRECTOR: Kelly Rudger

**RESOURCES ASSIGNED THIS PERIOD**

STRIKE TEAM/TASK FORCE/RESOURCE DESIGNATOR	Last Shift	LEADER	NUMBER PERSONS	DROP OFF POINT/TIME	PICK UP POINT/TIME
<i>TASK FORCE I – Division A – Freezeout Road – DP240 – 251</i>					
TFLD O-480	10/08	Timothy Nix	1	JOSEPH ICP/0700	JOSEPH ICP/1900
HEQB C-35.3	10/09	Niko Plaskett	1	JOSEPH ICP/0700	JOSEPH ICP/1900
HEQB C-35.5	10/09	Dave Leggett-Rios	1	JOSEPH ICP/0700	JOSEPH ICP/1900
DZR2 E-13 Alpine Forest	10/03	James Briggs	2	JOSEPH ICP/0700	JOSEPH ICP/1900
EXC2 E-345 Brush, David W	10/10	David Brush	2	JOSEPH ICP/1900	JOSEPH ICP/1900
EXC3 E-339 Alpine Forest	10/03	Rusty Briggs	2	JOSEPH ICP/1900	JOSEPH ICP/1900
CRW2 C-37 CSR Enterprises, Inc	10/11	Roger Lamieux	20	JOSEPH ICP/0700	JOSEPH ICP/1900
DZR4 E-343 Borgen Custom Wood	10/03	Terry Borgen	2	JOSEPH ICP/0700	JOSEPH ICP/1900
EXC2 E-334 Table Rock Forestry	10/10	Dave Williams	2	JOSEPH ICP/0700	JOSEPH ICP/1900
EXC2 E-335 Brian Bell Enterprises	10/03	Brian Bell	2	JOSEPH ICP/0700	JOSEPH ICP/1900
EXC2 E-332 Jeff Smith Excavating Company	10/03	Cameron Smith	2	JOSEPH ICP/0700	JOSEPH ICP/1900
EXC2 E-333 Justin Pitts Trucking	10/10	JW Burns	2	JOSEPH ICP/0700	JOSEPH ICP/1900
REMS E-211 REMS 30	10/09	Avery Mason	4	JOSEPH ICP/0700	JOSEPH ICP/0700
<i>TASK FORCE II – Division A Break – Working North of Imnaha Spike beginning at DP 285</i>					
TFLD O-482	10/09	Brian Bornong	1	JOSEPH ICP/0700	JOSEPH ICP/1900
HEQB (t) O-9024	10/07	Joe David Barnes	1	JOSEPH ICP/0700	JOSEPH ICP/1900
HEQB O-485	10/05	Patrick McGunagle	1	JOSEPH ICP/0700	JOSEPH ICP/0700
HEQB C-35.22	10/09	Konrad Dickman	1	JOSEPH ICP/0700	JOSEPH ICP/0700
HEQB(t) O-9023	10/07	Anthony Goodwater	1	JOSEPH ICP/0700	JOSEPH ICP/0700
CRW2 C-36 Alta Pacific AP03	10/11	Fernando Zamudio	20	JOSEPH ICP/0700	JOSEPH ICP/1900
EXC3 E-340 Steve Hofbauer	10/07	Steve Hofbauer	2	JOSEPH ICP/0700	JOSEPH ICP/1900
EXC3 E-341 Delange Enterprises	10/06	Pete Delange	2	JOSEPH ICP/0700	JOSEPH ICP/1900
DZR3 E-148 Bruce Young Logging	10/09	Clyde Britt	2	JOSEPH ICP/0700	JOSEPH ICP/1900
DZR3 E-204 Mortimore	10/10	Mitch Griffith	2	JOSEPH ICP/0700	JOSEPH ICP/1900
Medic Team E-222 Medic Team 41	10/10	Jarrold Scrimshaw	2	JOSEPH ICP/0700	JOSEPH ICP/0700

**CONTROL OPERATIONS:**

Continue implementing Suppression Repair operations and remediate damage caused to the landscape from fire suppression operations in order to meet turnback/suppression repair standards for the Oregon Department of Forestry and the U.S. Forest Service

SPECIAL INSTRUCTIONS: Coordinate closely with Divisions, READ's, and Operations to help facilitate actions.  
Utilize Field Maps to plan operations and record accomplishments.

FUNCTION	RX Freq/RX Tone	TX Freq/TX Tone	CHAN	FUNCTION	RX Freq/RX Tone	TX Freq/TX Tone	CHAN
COMMAND	170.6000 N/131.8	164.9625 N/123.0	3				
Tactical 12	168.2500 N/136.5	168.2500 N/136.5	12				
AIR TO GROUND PRI	166.6125 N	166.6125 N	13				
AIR TO GROUND TAC	168.3375 N	168.3375 N	14				

PREPARED BY (RESOURCE UNIT LEADER)

Tim Tran (t)

APPROVED BY (PLANNING SECTION CHIEF)

Jeff Stein

DATE

10/02/2022

TIME

2000

<b>DIVISION ASSIGNMENT LIST</b>				1. BRANCH <b>IV</b>				2. DIVISION/GROUP <b>Suppression Repair</b>				
ICS-204								Page 2 of 3				
3. INCIDENT NAME  <b>Double Creek</b>				4. OPERATIONAL PERIOD  <b>Date: 10/03/2022</b> <b>Time: 0700-1900</b>								
<b>OPERATIONS PERSONNEL</b>												
OPERATIONS: Chad Rott PLANNING OPERATIONS: Tim Tran (t) STRATEGIC OPERATIONS: DIVISION/GROUP SUPERVISOR: Tim Fondriest 10/3, Eric Panebaker 10/07				BRANCH DIRECTOR:  AIR OPERATIONS BRANCH DIRECTOR: Kelly Ruderger								
<b>RESOURCES ASSIGNED THIS PERIOD</b>												
STRIKE TEAM/TASK FORCE/RESOURCE DESIGNATOR				Last Shift	LEADER		NUMBER PERSONS		DROP OFF POINT/TIME		PICK UP POINT/TIME	
<i>Roads Ground</i>												
TFLD O-454				10/08	Shawn Torres		1		JOSEPH ICP/0700		JOSEPH ICP/1900	
GRD1 E-289 McKinney				10/05	Jerry McKinney		3		JOSEPH ICP/0700		JOSEPH ICP/1900	
WTS2 E-291 Christman Trucking				10/08	Matt Blazek		1		JOSEPH ICP/0700		JOSEPH ICP/1900	
WTS2 E-293 Water Wagons				10/06	Mike Musia		2		JOSEPH ICP/0700		JOSEPH ICP/1900	
Medic Team E-305 Medic Team 47				10/04	Brennen Hill		2		JOSEPH ICP/0700		JOSEPH ICP/0700	
GRD1 E-290 Bruce Young Logging				10/09	Matt McLaren		2		JOSEPH ICP/0700		JOSEPH ICP/1900	
WTS2 E-294 Siren Equipment				10/09	Sky Press		1		JOSEPH ICP/0700		JOSEPH ICP/1900	
WTS2 E-295 Shan Creek Suppression				10/09	Grant Bemis		1		JOSEPH ICP/0700		JOSEPH ICP/1900	
<b>CONTROL OPERATIONS:</b> Continue implementing Suppression Repair operations and remediate damage caused to the landscape from fire suppression operations in order to meet turnback/suppression repair standards for the Oregon Department of Forestry and the U.S. Forest Service												
SPECIAL INSTRUCTIONS: Coordinate closely with Divisions, READ's, and Operations to help facilitate actions. Utilize Field Maps to plan operations and record accomplishments.												
FUNCTION			RX Freq/RX Tone			TX Freq/TX Tone			CHAN			
COMMAND			170.6000 N/131.8			164.9625 N/114.18			3			
TACTICAL 12			168.2500 N/136.5			168.2500 N/136.5			12			
AIR TO GROUND PRI			166.6125 N			166.6125 N			13			
AIR TO GROUND TAC			168.3375 N			168.3375 N			14			
PREPARED BY (RESOURCE UNIT LEADER)				APPROVED BY (PLANNING SECTION CHIEF)				DATE		TIME		
Tim Tran (t)				Jeff Stein				10/02/2022		2000		

# DIVISION ASSIGNMENT LIST

ICS-204

1. BRANCH

IV

2. DIVISION/GROUP  
**Suppression Repair**  
Page 3 of 3

3. INCIDENT NAME

Double Creek

4. OPERATIONAL PERIOD

Date: 10/03/2022  
Time: 0700-1900

OPERATIONS PERSONNEL

OPERATIONS: Chad Rott    PLANNING OPERATIONS: Tim Tran (t)  
STRATEGIC OPERATIONS:  
DIVISION/GROUP SUPERVISOR: Tim Fondriest 10/3, Eric Panebaker 10/07

BRANCH DIRECTOR:  
AIR OPERATIONS BRANCH DIRECTOR: Kelly Rudger

RESOURCES ASSIGNED THIS PERIOD

STRIKE TEAM/TASK FORCE/RESOURCE DESIGNATOR	Last Shift	LEADER	NUMBER PERSONS	DROP OFF POINT/TIME	PICK UP POINT/TIME
<i>TASK FORCE V – Division A/Z Freezeout Rd DP 240-251</i>					
HEQB O-485	10/05	Patrick McGunagle	1	JOSEPH ICP/0700	JOSEPH ICP/0700
HEQB C-35.22	10/09	Konrad Dickman	1	JOSEPH ICP/0700	JOSEPH ICP/0700
HEQB (t) O-9023	10/07	Anthony Goodwater	1	JOSEPH ICP/0700	JOSEPH ICP/0700
READ O-445	10/05	John Manderscheid	1	JOSEPH ICP/0700	JOSEPH ICP/1900
READ O-152	10/05	Lanny Flaherty	1	JOSEPH ICP/0700	JOSEPH ICP/0700

**CONTROL OPERATIONS:**

Continue implementing Suppression Repair operations and remediate damage caused to the landscape from fire suppression operations in order to meet turnback/suppression repair standards for the Oregon Department of Forestry and the U.S. Forest Service

SPECIAL INSTRUCTIONS: Coordinate closely with Divisions, READ's, and Operations to help facilitate actions.  
Utilize Field Maps to plan operations and record accomplishments.

FUNCTION	RX Freq/RX Tone	TX Freq/TX Tone	CHAN	FUNCTION	RX Freq/RX Tone	TX Freq/TX Tone	CHAN
COMMAND	170.6000 N/131.8	164.9625 N/114.18	3				
TACTICAL 12	168.2500 N/136.5	168.2500 N/136.5	12				
AIR TO GROUND PRI	166.6125 N	166.6125 N	13				
AIR TO GROUND TAC	168.3375 N	168.3375 N	14				

PREPARED BY (RESOURCE UNIT LEADER)

Tim Tran (t)

APPROVED BY (PLANNING SECTION CHIEF)

Jeff Stein

DATE

10/02/2022

TIME

2000



# DIVISION ASSIGNMENT LIST

ICS-204

1. BRANCH

2. DIVISION/GROUP  
**Backhaul**

3. INCIDENT NAME

**Double Creek**

4. OPERATIONAL PERIOD

**Date: 10/03/2022**  
**Time: 0700-1900**

**OPERATIONS PERSONNEL**

OPERATIONS: Chad Rott  
 PLANNING OPERATIONS: Tim Tran (t)  
 STRATEGIC OPERATIONS:  
 DIVISION/GROUP SUPERVISOR: Doug Hellinger

BRANCH DIRECTOR:

AIR OPERATIONS BRANCH DIRECTOR: Kelly Rudger

**RESOURCES ASSIGNED THIS PERIOD**

STRIKE TEAM/TASK FORCE/RESOURCE DESIGNATOR	Last Shift	LEADER	NUMBER PERSONS	DROP OFF POINT/TIME	PICK UP POINT/TIME
C-9001 Torres Crew		Ismael Lopez	10		

**CONTROL OPERATIONS:**

Backhaul equipment on various parts of the fires.  
 Will have assistance from Ground Support to move equipment. TLF D Hellinger will track resources assigned.

**SPECIAL INSTRUCTIONS:** Work closely with adjoining divisions to provide for efficient resource sharing.  
 Utilize Field Maps to capture any remaining information regarding suppression impacts or any site/location not yet identified.  
 Plan for efficient backhaul of pumps, drop tanks, hose, supplies, trash, etc.

FUNCTION	RX Freq/RX Tone	TX Freq/TX Tone	CHAN	FUNCTION	RX Freq/RX Tone	TX Freq/TX Tone	CHAN
See Communication Plan							

<p>PREPARED BY (RESOURCE UNIT LEADER)</p> <p>Tim Tran (t)</p>	<p>APPROVED BY (PLANNING SECTION CHIEF)</p> <p>Jeff Stein</p>	<p>DATE</p> <p>10/02/2022</p>	<p>TIME</p> <p>2000</p>
---	---	-------------------------------	-------------------------

**DIVISION ASSIGNMENT LIST**  
ICS-204

1. BRANCH  
**IA**

2.

3. INCIDENT NAME  
**Double Creek**

4. OPERATIONAL PERIOD  
**Date: 10/03/2022**  
**Time: 0700-1900**

OPERATIONS PERSONNEL

OPERATIONS: Chad Rott    PLANNING OPERATIONS: Tim Tran (t)  
STRATEGIC OPERATIONS:  
DIVISION/GROUP SUPERVISOR:

BRANCH DIRECTOR:  
AIR OPERATIONS BRANCH DIRECTOR: Kelly Rudger

RESOURCES ASSIGNED THIS PERIOD

STRIKE TEAM/TASK FORCE/RESOURCE DESIGNATOR	Last Shift	LEADER	NUMBER PERSONS	DROP OFF POINT/TIME	PICK UP POINT/TIME

CONTROL OPERATIONS:

SPECIAL INSTRUCTIONS: Be prepared for initial attack as requested. Staged at Joseph ICP. Utilize comms assigned to the Division response area in which you are operating. See communications plan.

FUNCTION	RX Freq/RX Tone	TX Freq/TX Tone	CHAN	FUNCTION	RX Freq/RX Tone	TX Freq/TX Tone	CHAN
REFER TO COMMUNICATIONS PLAN							

PREPARED BY (RESOURCE UNIT LEADER) Tim Tran (t)	APPROVED BY (PLANNING SECTION CHIEF) Jeff Stein	DATE 10/02/2022	TIME 2000
--	--	--------------------	--------------

**AIR OPERATIONS SUMMARY**  
**Double Creek/Nebo/Sturgill/Goat 1&2**

Prepared By: Kelly Ruderger

Prepared: 10/2/2022

Prepared Time: 1600 Hrs

**2. OPERATIONAL PERIOD**  
 10/03/2022

**START TIME:**  
 0700

**END TIME:**  
 2000

**SUNRISE:**  
 0650

**SUNSET:**  
 1824

HIGH VELOCITY, SHIFTING, ERRATIC WINDS WILL AFFECT AIRCRAFT PERFORMANCE AND AVAILABILITY OVER THE FIRE, VISIBILITY IS AN ISSUE.  
 ENSURE TACTICAL AVIATION USE IS IN ALIGNMENT WITH INCIDENT PRIORITIES  
 TRACK WATER SOURCE USE ON COST SUMMARIES FOR EACH HELICOPTER.

\*LEND/LEASE TO NEW IA OUTSIDE THE DELEGATION \*

TETON HELITACK (EXTRACTION) KELLY HEIDENREICH  
 (435)-691-1637

TETON HELITACK  
 H-8HX  
 AGENCY SHORT-HAUL  
 JOSEPH HELIBASE

PROVIDE LAT/LONG DD MM DM  
 ELEVATION

ESTIMATED PATIENT WEIGHT

ESTIMATED TREE HEIGHT

TFR  
 Double Creek  
 2/6610  
 118.600

NOTAM  
 091115

6. PERSONNEL	NAME	PHONE #	7. FREQUENCIES	AM	FM	8. FIXED-WING Avail/ Type/ Make-Model/ N#/ Base
AOBD	Kelly Ruderger	503-341-7225	A/A TFR DBL CRK	118.600		AIRTANKERS: ORDER THRU ATGS
			A/A Sturgill Wilderness	126.225		
			A/A (Rotor Wing)	133.1250		JOSEPH AIRPORT 45 21.61 X117 15.07
ATGS	Contact Dispatch		A/G (Primary) DBL CRK	166.61250		Aerial Supervision Platforms: Upon request through La Grande Dispatch
			A/G (Tactical) DBL CRK	168.3375		Finance email: 2022.doublecreek.finance@firenet.gov
			DECK	163.100		
			TOLC	171.0375		Helibase emails: doublecreekhelibase@gmail.com
HEBM	Ryon Reed	435-210-0043				
HEBM T	Shane Dillavou	541-377-2403				
La Grande Dispatch		541-975-5415	Local S.A.R. freq. (Medevac, Life Flight)	155.805 tx 156.7		

FAA N#	TY	MAKE/ MODEL	BASE	START	AVAIL	REMARKS	FAA N#	TY	MAKE/ MODEL	BASE	START	AVAIL	REMARKS
N660FS	1	UH-60A	JSY	0700	0800	Bucket	N38HX	3	AS-350B3	JSY	0700	0800	Recon/Short-Haul
							N404HA	2	B-205++	JSY	0700	0800	Rapp/H20 etc



*Controlled Unclassified Information//Basic*

**INCIDENT RADIO COMMUNICATIONS PLAN I-205**

1. INCIDENT NAME	2. DATETIME PREPARED	3. OPERATIONAL PERIOD DATETIME
Double Creek Fire	10/02/22 1400	10/03/22 Day/Night

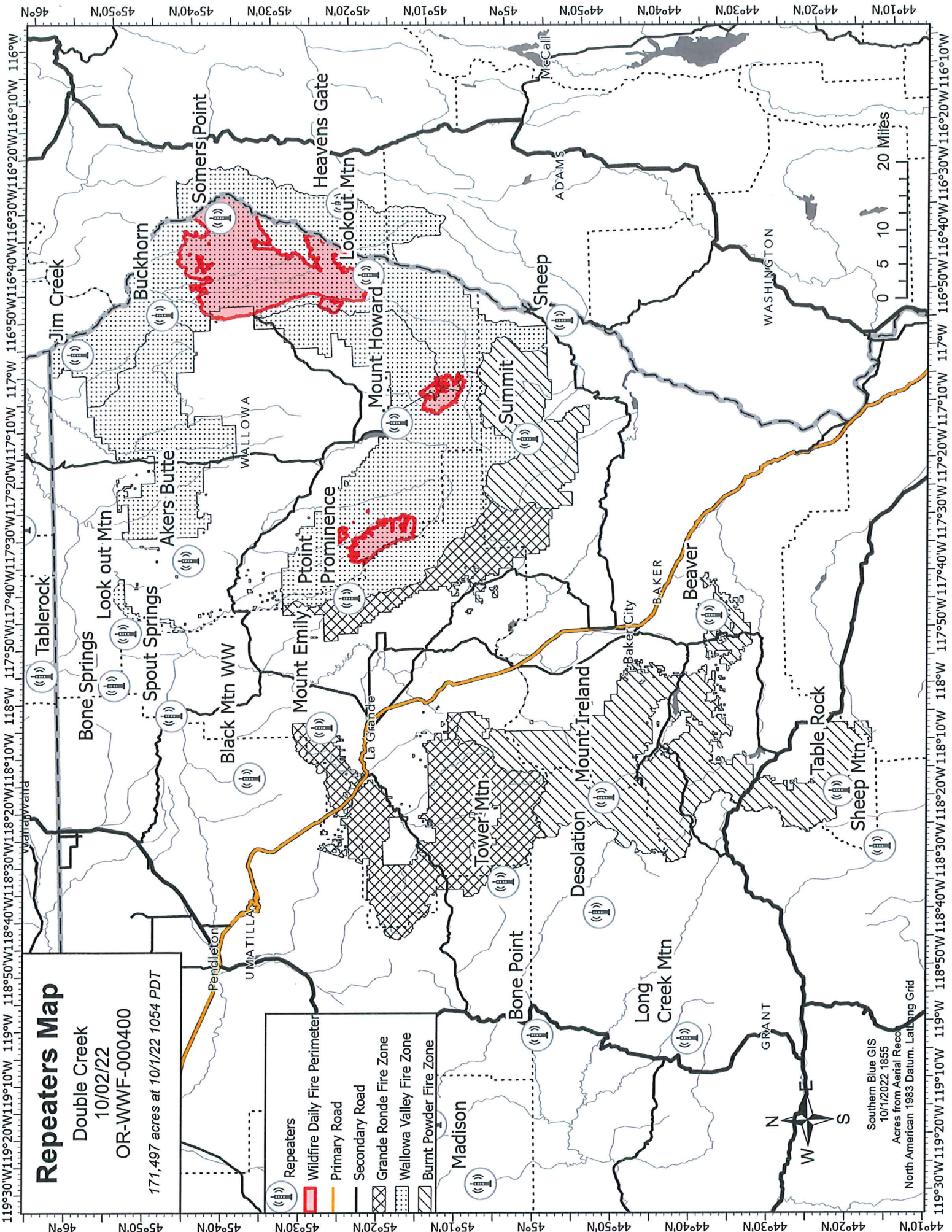
4. BASIC RADIO CHANNEL UTILIZATION

Ch #	Channel Name	Assignment	RX Frequency	RX Tone / NAC	TX Frequency	TX Tone / NAC	Mode Digital (D) Analog (A) Mixed (M)	Remarks
1	CMD 1	COMMAND	170.6000	131.8	164.9625	123.0	A	Buckhorn - DIV E
2	CMD 2	COMMAND	173.4500	131.8	163.6875	156.7	A	Howard - ICP
3	CMD 3	COMMAND	170.6000	131.8	164.9625	114.8	A	Lookout - DIV Q/T
4	CMD 4	COMMAND	170.6000	131.8	164.9625	167.9	A	Somers - Snake River Corridor
5	CMD 5	COMMAND	173.4500	131.8	163.6875	110.9	A	AKERS - Sturgill/Lostine
6	CMD 6	COMMAND	173.4500	131.8	163.6875	127.3	A	Pt. Prom
7	TAC 7	TACTICAL	168.0500	136.5	168.0500	136.5	A	DIV A/Z
8	TAC 8	TACTICAL	168.2000	136.5	168.2000	136.5	A	DIV Q/T
9	TAC 9	TACTICAL	168.6000	136.5	168.6000	136.5	A	DIV E
10	TAC 10	TACTICAL	166.7250	136.5	166.7250	136.5	A	Div Sturgill
11	TAC 11	TACTICAL	166.7750	136.5	166.7750	136.5	A	Div Lostine/Sturgill/Goat
12	TAC 12	TACTICAL	168.2500	136.5	168.2500	136.5	A	Div Suppression/Repair
13	A/G PRI	All DIVs	166.6125	None	166.6125	None	A	A/G Supv Air Attack
14	A/G TAC	All DIVs	168.3375	None	168.3375	None	A	A/G Tactical Bucket Work
15	A/G SAR	AIR MEDICAL	155.8050	None	155.8050	156.7	A	A/G AIR MEDICAL
16	AIRGUARD	AIRGUARD	168.6250	None	168.6250	110.9	A	EMERGENCY USE ONLY

5. I-205 Prepared By **BARRY MATHIAS, COM1** 

*Controlled Unclassified Information//Basic*

SAFETY MESSAGE: PLEASE POST LOOKOUTS TO RELAY MESSAGES OUT OF POOR COVERAGE AREAS.



# Repeaters Map

Double Creek  
10/02/22  
OR-WWWF-000400

171,497 acres at 10/11/22 1054 PDT

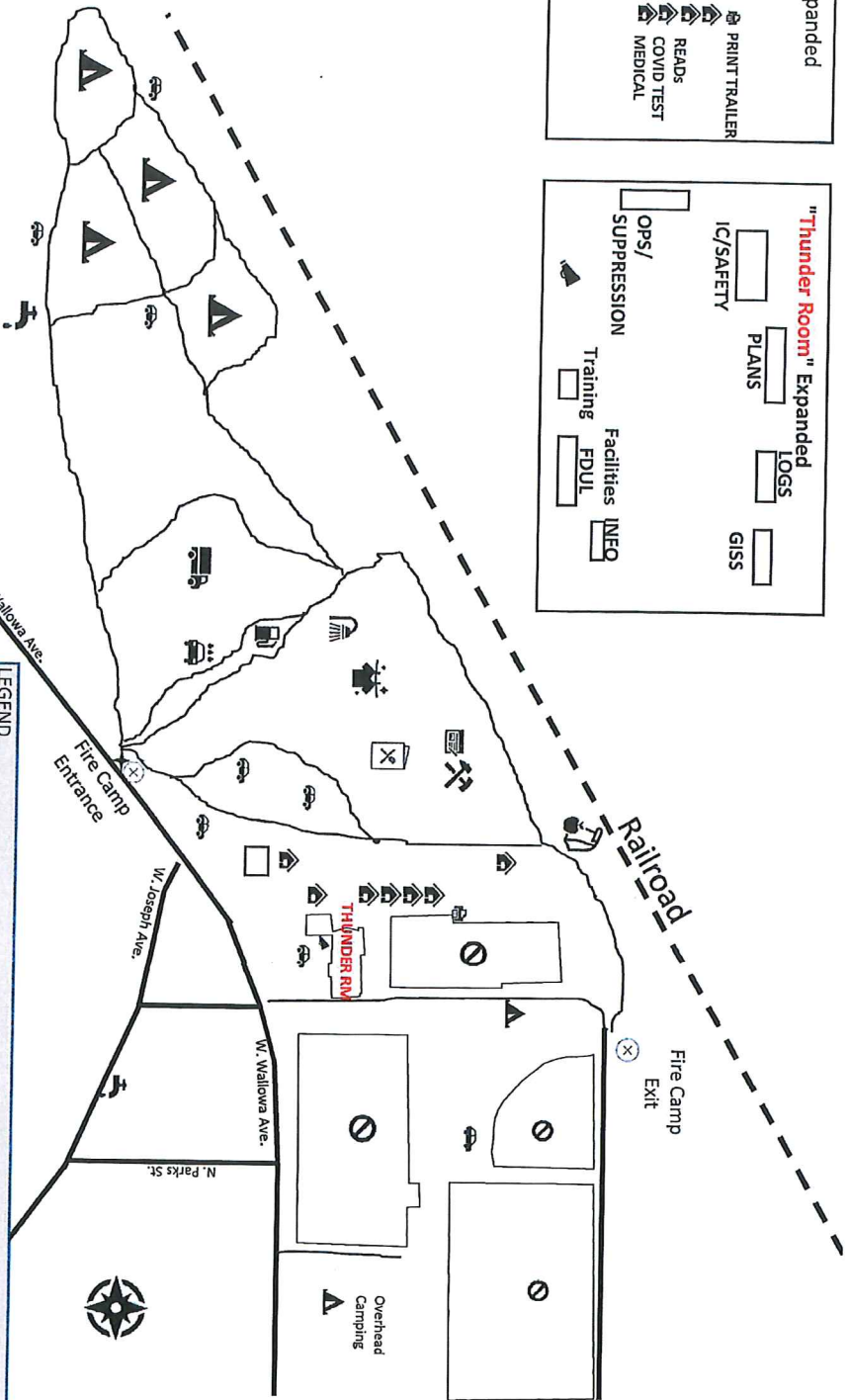
- Repeaters
- Wildfire Daily Fire Perimeter
- Primary Road
- Secondary Road
- Grande Ronde Fire Zone
- Wallowa Valley Fire Zone
- Burnt Powder Fire Zone

Southern Blue GIS  
10/1/2022 1855  
Acres from Aerial Reco  
North American 1983 Datum, Latlong Grid

# Double Creek ICP MAP

**LEGEND**

	Tent Camping		Showers		Supply		Camp Road
	Ground Support		Laundry		Print Trailer		Meeting Space
	Yurts		Parking		Ordering		Security/Check
	Draft Site		Fuel		Kitchen		Point
	Weed Wash		Briefing		Lunch - Ice		Asphalt Road



**"Main Street" Expanded**

- FINANCE
- PRINT TRAILER
- READS
- COVID TEST
- MEDICAL
- Meeting Room

**"Thunder Room" Expanded**

- LOGS
- GISS
- PLANS
- IC/SAFETY
- OPS/ SUPPRESSION
- Training
- Facilities
- FDUL
- INEQ

# Logistics Message

## ICP/Base Camp

### LOGISTICS INFORMATION

All logistic support items listed below are at ICP/Base Camp  
Joseph Rodeo Grounds, 405 W Wallowa Ave, Joseph OR

### FOOD

Breakfast 0600-0900

Lunches available at Reefer starting at 0600 (along with water, Gatorade and ice)

Dinner 1730-2030

**GROUND SUPPORT HOURS:** 0530-2130

**Mechanic** 0600-2100

**Fuel Tender** 0600-1100, 1300-2100

**Weed Wash** 0700-2000

**ORDERING** 0700-1900

For questions call 209-639-9105

Send an electronic General Message (213) or a photo (as PDF if possible) of a hard copy 213 to Ordering  
at [2022.doublecreek.ordering@firenet.gov](mailto:2022.doublecreek.ordering@firenet.gov)

\*\* NOTE: GM's need separated by O, E, C and S requests with Fire Name at top of page

Please include: Point of Contact with phone number, Report To/Delivery Point, and Date & Time Needed. Name requests  
need justification with minimum 48 hour reporting.

**SUPPLY** 0600-2100

**SHOWERS** 0500-1200 and 1400-2200

**LAUNDRY** 0630-1000 AND 1700-2100

## **Incident Phone Numbers**

**DMOB: 509-432-6143**

**Finance: 971-346-6580**

**Ground Support: 907-987-3484**

**Communications: 206-743-1782**

**COVID: 206-817-9823**



# Finance Message

Finance Email: [2022.doublecreek.finance@firenet.gov](mailto:2022.doublecreek.finance@firenet.gov)

SUBJECT: Include Key Word **TIME** for Agency Overhead, Crews, & Cooperators

SUBJECT: Include Key Word **EQUIPMENT** for Contract Equipment, Crews and ODF IRA's

SUBJECT: Include Key Word **COST** for Buying Team, Aircraft

SUBJECT: Include Key Word **COMP** for Comp/Claims

SUBJECT: Include Key Word **CHECK IN** for ROs, Casual Hire, Red Cards

## Finance Contact Numbers

EQUIPMENT: 541-571-0903    Personnel: 971-346-6580

COMP/CLAIMS: 971-346-6580

PLEASE ENSURE THE BELOW DOCUMENTS ARE EMAILED **AS ATTACHMENTS** TO:

[2022.doublecreek.finance@firenet.gov](mailto:2022.doublecreek.finance@firenet.gov)

Overhead, Crews & Cooperator Resources	Contract Resources
<ul style="list-style-type: none"><li>• <b>Check-In:</b> Crew Manifest, Cooperative Agreement (if applies), AD Hire Letter, Resource Order</li><li>• <b>Daily:</b> Crew Time Report (CTR), Shift Tickets</li><li>• <b>Demob:</b> Signed OF288, Final Equipment Use Invoice (Cooperator)</li></ul>	<ul style="list-style-type: none"><li>• <b>Check-In:</b> Resource Order, Full Contract/Agreement, Certifications (<i>if required</i>), Pre-Inspection</li><li>• <b>Daily:</b> Shift Tickets, receipts (fuel issues, claims, hotels, etc.)</li><li>• <b>Demob:</b> Contractor Evaluations, Final Shift Tickets and receipt(s) for Additions/ Deductions, Post-Inspection, Final Signed Invoices</li></ul>

## REMINDER

- ★ **LEADERS INTENT:** *I expect all emergency responders to record actual time worked each day; there are no guaranteed shift lengths to maximize time charged under policy.*
- ★ **WHEN CLAIMING HAZARD PAY YOU MUST INCLUDE THE SUPPRESSION ACTION BEING PERFORMED. THIS INCLUDES OPERATIONS WHICH DIRECTLY SUPPORT CONTROL OF FIRE (E.G., ACTIVITIES TO EXTINGUISH THE FIRE, FIREFIGHTING, GROUND SCOUTING, SPOT FIRE PATROLLING, SEARCH AND RESCUE OPERATIONS, AND BACKFIRING). – PER PMS902 – YELLOW BOOK**
- ★ PLEASE SHOW YOUR LUNCH BREAK – IF **NO BREAK SHOWN IT \*MUST\* BE JUSTIFIED** IN COMMENTS
- ★ **PLEASE ENSURE THE FIRE NAME (DOUBLE CREEK, STURGILL, or NEBO) IS SHOWN ON YOUR CTR OR SHIFT TICKET – IN REMARKS SECTION**

PDF files are easiest for Finance to work with, so if you could send files in that format. To scan on an iPhone go to Notes, click on new note icon, camera icon then Scan Documents. Save it and email per above instructions. On an Android you will need to download an App, most are free to download and use.



## FINANCE OPPORTUNITY

### Personnel Resources

RO#	NAME	ISSUE/QUESTION
O-216	Gusse, Walker	Missing CTRs 9.15 and 9.26-current
O-236	Jake Chaffin	Missing CTRs 9.28-current
O-368	Spencer, Brent	Missing 9.15-9.18 CTRs
O-394	Canning, David	Missing CTRs 9.24-current
O-424	Bournazian, Mike	Resubmit all shift tickets indicating beg & end odo each day, please.
O-434	Hill, Alan	Missing 9.24-9.25 CTRs
O-471	Armentrout, Cynthia	Missing CTRs 9.27-current
O-474	Tucker, Shelly	Missing CTR 9.30
O-488	Harris, Justin	Missing 9.26 CTR
O-492	Dutrey, Patricia	Missing CTRs 9.29-current
O-498	Lewis, Cara	Missing all CTRs 9.27-current
O-9023	Anthony Goodwater	Missing CTRs 9/29-current
O-9024	Barnes, Joe	Missing CTRs 9.24-current

### Equipment Resources:

RO	Vendor Name	Issue
ALL C, E, O's	ALL	Ensure you are putting your RO# on the CTR/ST's
E-102	Black Forest	missing 9/11; 9/25; 9/27
E150	Delange Enterprises, INC	missing ST for 9/21.
E-204	Mortimore	Missing ST for 9/27.
E-219	Archer Mountain	Missing 9/28
E-226	Fireline Medics	Missing 9/17 and 9/28
E-227	Adventure Medics	Missing STs 9/16-9/18; 9/22-9/24; 9/28-current
E-260	AAA Mobile Solutions	Need Shift Tickets from 9/24 to current; and Number of Pounds each day
E-270	Flashback Fire	Missing 9/9, 9/11; 9/13; 9/17,9/29
E-274	Xtreme Wildland, INC	Missing 9/14
E-288	REMS	Missing 9/15-9/16
E-289	McKinney	Missing 9/17
E-299	Borthers Fire	Missing 9/19; 9/22
E-344	Injury care	NO ST's since 9/24
E-349	The Road Home	NO agreement and RO, but sent in shift tickets.
E-39	Premier Services	Missing 9/16, 9/18-19, 9/21-26
E-9012	Henderson Logging	Missing 9/14
E9031	Henderson Logging	Missing ST 9/23. No ST since 9/29.

## Double Creek Fire DEMOB Procedures

1. Contact Finance 24 hours prior to give them a heads up you are departing. Finance is located at ICP at Joseph Rodeo Grounds. Phone contacts in IAP.
2. Return any checked-out equipment and/or radios to Supply and/or Commo.
3. All Contractors complete Ground Support inspection.
4. All units traveling off-road need to complete a WEED WASH prior to departure.
5. Complete the Finance process and turn in any documents.
6. Contact DEMOB LAST at 509-432-6143 to finalize travel and release process.  
DEMOB Email: michael\_heston@firenet.gov

NOTE: All air travelers need to contact DEMOB to make arrangements 72 hours prior to departure.

### THREE DAY DEMOB LIST

#### **Monday 10-3-22**

##### EQUIPMENT

E-208	0630	(WTS3)	NORTHERN CONSTRUCTION
E-156	0700	(WTS2)	MINAM RIVER
E-331	0800	(EXC2)	JUSTIN PITTS TRUCKING
E-349	0830	(CHP2)	ROAD HOME INC
E-297	0900	(CHP3)	CURTIS T. PUMPHREY, DBA: BLACK
E-150	0930	(DZR3)	DELANGE ENTERPRISES, INC. DBA:
E-203	1000	(DZR3)	ASH KICKERS, LLC. 3WN00443

##### OVERHEAD

O-424	0600	(BCMG)	BOURNAZIAN, MIKE
O-265	0700	(HECM)	MUTA, ISAKKO
O-400	1030	(LOFR)	RAY, HARVEY SCOTT
O-437	1600	(RADO)	CARROLL, LEWIS
O-415	1700	(PTRC)	BEICHNER, LODISCA
O-411	1800	(TFLD)	DOLAN, MELANIE N
O-413	1815	(DIVS)	FONDRIEST, TIMOTHY J

#### **Tuesday 10-4-22**

##### EQUIPMENT

E-219	0700	(STK2)	STK2 - ARCHER MOUNTAIN
E-9029	0815	(LOGL)	LOGL - HENDERSON LOGGING
E-13	0930	(DZR2)	ALPINE FOREST
E-333	1000	(EXC2)	EXC2 - JUSTIN PITTS TRUCKING
E-339	1100	(EXC3)	EXC3 - ALPINE FOREST, INC.
E-335	1200	(EXC2)	EXC2 - BELL, BRIAN ENTERPRISES, LLC
E-343	1330	(DZR4)	DZR4 - BORGEN CUSTOM WOOD, LLC

##### OVERHEAD

O-407.3	0700	(THSP)	COOK, MARGARET M
O-289	0715	(REAF)	NEITLICH, PETER
O-408	0730	(SEC1)	DUNHAM, BRANDON W
O-421	0900	(COMT)	OLASO, THAYNE S
O-419	0930	(EQPM)	PARRISH, ANGELA
O-417	1200	(MEDL)	ABEL, FRANK HOYLE
O-434	1400	(OSC2)	HILL, ALAN WALKER

## Wednesday 10-5-22

### EQUIPMENT

E-165	0630	(ENG4)	FIREWORKS BRUSH 410
E-226	0700	(AMB2)	FIRELINE MEDICS
E-9027	0830	(LOGL)	HENDERSON LOGGING 132

### OVERHEAD

O-312	0630	(HEBM)	RUDGER, KELLY
O-433	0700	(HECM)	KEARNEY-REEVES, JESSICA R
O-441	0730	(HEBM)	DILLAVOU, SHANE J
O-394	0800	(FOBS)	CANNING, DAVID PAUL
O-432	1600	(HECM)	DELONG, THOMAS



## Extension/Crew Swaps Process

Extensions are granted based upon incident need and resource request.

Extension requests must be completed 48 hours before the resource's last work shift ends. Forward completed Resource Extension Request Form to your Section Chief. Daily at 1500, the Operations Sections Chief will review requested extensions for approval to move forward.

### Extension Process:

- **Evaluate** if the extension is necessary to carry out the mission.
- **Obtain** approval of the extension from the employee's home supervisor.
- **Forward** the completed (signed) extension to [timothy.tran@usda.gov](mailto:timothy.tran@usda.gov)

### Crew Swaps Process:

All Crew swaps must be documented on a General Message form, requested by the resource supervisor. The Operations Sections Chief will review requested crew swaps for approval to move forward. If approved, the Operations Section Chief will forward it to Check In.

### Forms are available from the QR code on front of the IAP:

- Go to the "Fillable CTRs, Shift Tickets, Supply Evals, Misc Forms"
- **For Crew Swaps:** Download the "GM 213 for Double Creek – Fillable"
- **For Extensions:** Download the "Resource\_Extension\_Request\_Form"

**FORMS WITHOUT ALL REQUIRED SIGNATURES WILL NOT BE PROCESSED**

## DOCUMENTATION

PLEASE SEND YOUR DOCUMENTS TO  
[2022.doublecreek.docs@firenet.gov](mailto:2022.doublecreek.docs@firenet.gov)

*Format for naming records: Document type\_Section/Name\_Date(yr mo day)\_Fire Name\_Fire #*

*Examples: 213-SUPPLY ORDER\_ORDM\_2022XXXX\_DOUBLE CREEK\_OR-WWF-000400  
214\_DIVS/J DOE\_2022XXXX\_DOUBLE CREEK\_OR-WWF-000400  
296\_E#\_GSUL\_2022XXXX\_DOUBLE CREEK\_OR-WWF-000400*

# Resource Advisor Message

## Double Creek Fire

### Water Bars

**Water Bars are a barrier embedded in the line to divert water into the adjacent green.**

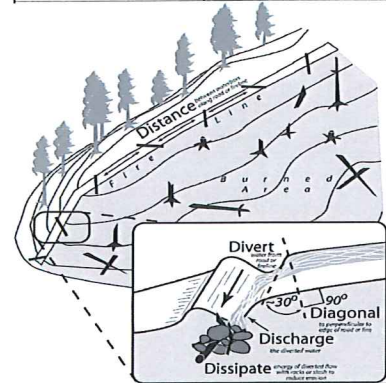
Height of water bar for handlines should average 6-12 inches, dozer line less than 18".

- Cut in the water bar – do not simply push up loose soil because it will wash away.
- Water bars should direct runoff away from the burned area where possible.
- Assure that the down slope end of the water bar is open and has adequate length to allow free flow of water off the fire line. Extend into the green 1 foot beyond the line.
- Logs can be incorporated into water bars so long as they are embedded or anchored in a trench. Ensure fire end of log does not contact any organic material.
- Place slash below outlets of water bars to help slow runoff and collect sediment.

In selecting areas for establishing water bars the following should be considered:

- Locate bars at natural slope breaks. The idea is to move water off the fire line before it can build up enough energy to erode soil.
- When possible, locate bars where the outlet empties onto a resistant surface (i.e., rock or log debris). Flow into green, live vegetation when possible.
- Locate bar outlets to provide maximum buffer distance to stream channel.

Fire Line Slope %	Maximum Water Bar Spacing
2-10	300'
10-30	150'
30+	50'



### General Repair Standards

- Public Lands – See Forest Service standards, Private Lands – See Oregon Dept. of Forestry standards
- Handlines - Pull berms back into the line and spread-out slash within the clearing limits. Install hand constructed water bars according to guidelines above. Camouflage entry points with slash, rock, or debris if available (not dirt berms).
- Dozer lines - Pull in berms and woody or rocky debris. Distribute material to resemble the surrounding area. Install water bars or checkerboard craters to roughen the surface. Reestablish drainages or stream crossings. Consult with READs for channel repair. Camouflage entry points with slash, rock, or debris if available. If entry from a road, restore drainage ditch. Seed steep segments >45% slope or as prescribed by READ/REAF.
- Roads as line – Clean out ditches and culvert inlets/outlets. Chip excess slash. Flush cut stumps created by mastication or felling where safely possible. Grade and shape specified road segments as directed by READ engineer.
- Previously closed or decommissioned roads used as line – repair to pre-fire conditions.
- Replace or repair to pre-fire condition any signs, gates, barriers, culverts, drainage features (e.g., rolling dips, road cross ditching, and lead-off ditches) and asphalt surfaces that were damaged by suppression activities.

### Heritage & Cultural Resources

All cultural resources and human remains are protected. **Please leave them in place- DO NOT DISTURB OR COLLECT!** Please contact a READ if cultural resources like arrowheads, rock flakes/chips, teepee circles, tree blazes, or historic artifacts (like cans & bottles) are found. Take photos and document the location of the resource found so a READ can investigate.

### Noxious Weeds

- **REDUCE THE SPREAD:** Brush off packs and boots (especially laces) before leaving fire camp to reduce spread and cost of treatment.
- All vehicles and equipment must see the weed wash upon arrival and de-mob to prevent the import or export of noxious invasive weeds. Wash station is located at fire camp at the rodeo grounds in Joseph.

### Wilderness

- Utilize Minimum Impact Suppression Tactics (MIST) to minimize resource damage within the Eagle Cap and Hells Canyon Wilderness. See page 96 of your IRPG or consult a READ/REAF. Firefighter safety, fire conditions and good judgment dictate the actions taken.
- Flush cut stumps, avoid cutting "rounds", ensure unnatural visuals are not seen from trails.
- All other motorized activity must be approved by the Agency Administrator.
- "Leave no trace": pack out left-over food and trash; dispose of human waste by burying in catholes 6-8 inches deep 200 feet away from water, camp, and trails, cover and disguise the cathole. Toilet paper should be buried or packed out.

### Chipping Standards

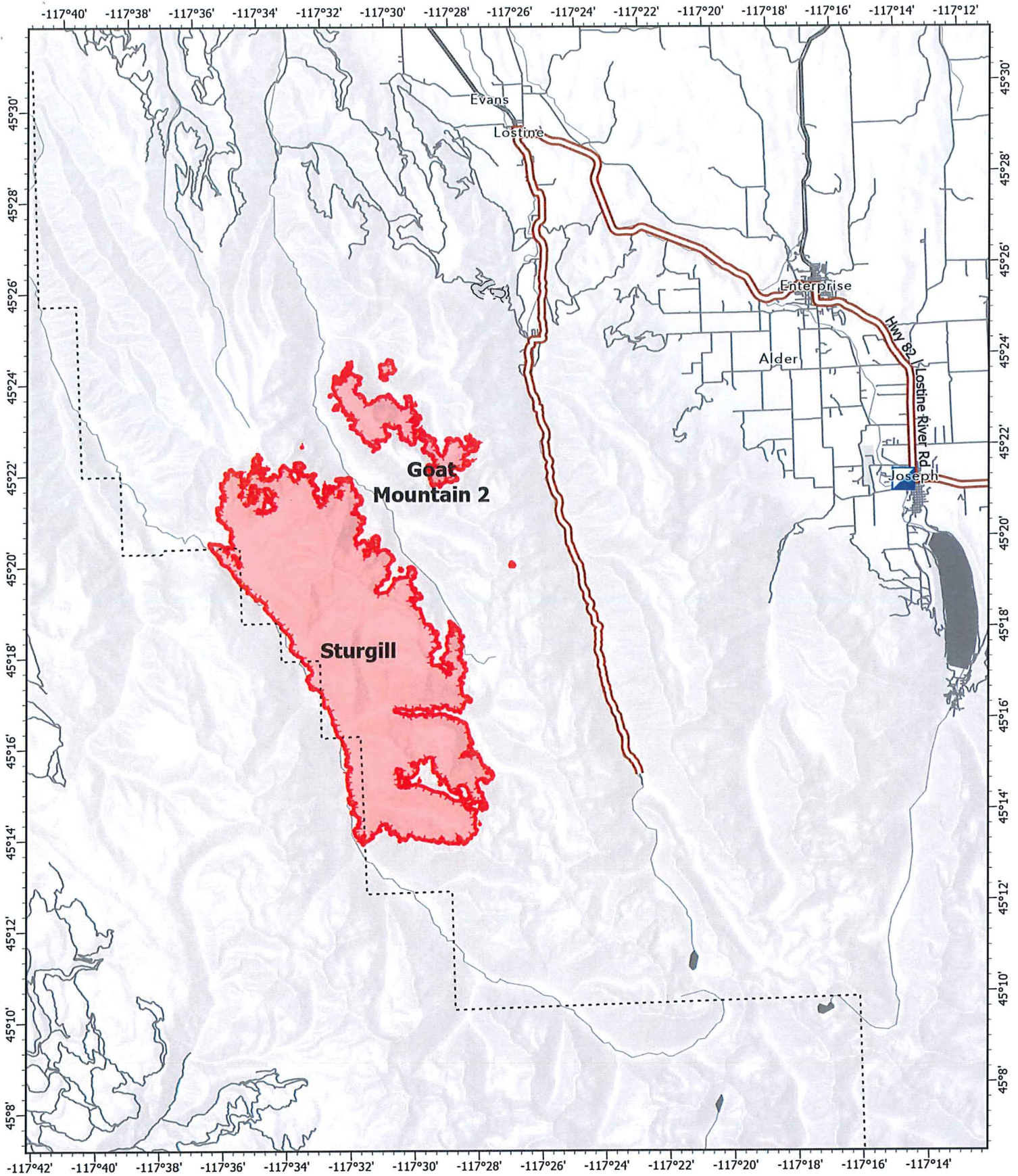
- Provide a 30-foot buffer of no chipping at water crossings or culverts.
- Do not deposit chips into road ditches or on slopes too steep to hold them in place. Do not spread chips into streams or the edge of streams.
- Spread chips so that they are no more than 3 inches deep, especially around the root collar of trees.

**Please report resource concerns through chain of command and consult your friendly READ/REAF.**

Incident Point Locations

IncidentName	FeatureCategory	Label	LatWGS84 DDM	LongWGS84 DDM
Nebo	Drop Point	10	45° 10.661' N	117° 06.304' W
Nebo	Drop Point	20	45° 09.396' N	117° 02.027' W
Nebo	Drop Point	32	45° 08.157' N	117° 03.744' W
Nebo	Drop Point	35	45° 08.046' N	117° 03.316' W
Nebo	Drop Point	15	45° 10.295' N	117° 03.592' W
Nebo	Drop Point	30	45° 08.896' N	117° 04.476' W
Nebo	Drop Point	5	45° 12.436' N	117° 04.316' W
Nebo	Helispot	5	45° 10.647' N	117° 06.204' W
Nebo	Helispot	15	45° 12.570' N	117° 04.274' W
Nebo	Helispot	25	45° 09.808' N	117° 01.981' W
Nebo	Drop Point	45	45° 07.666' N	116° 59.708' W
Nebo	Drop Point	40	45° 07.828' N	117° 00.186' W
Nebo	Helispot	45	45° 08.619' N	117° 07.632' W
Nebo	Helispot	35	45° 07.248' N	117° 04.729' W
Double Creek	Drop Point	255	45° 15.658' N	116° 48.711' W
Double Creek	Drop Point	257	45° 14.163' N	116° 50.659' W
Double Creek	Drop Point	259	45° 11.611' N	116° 52.155' W
Double Creek	Drop Point	260	45° 10.849' N	116° 52.387' W
Double Creek	Camp	Pothole Spike	45° 09.066' N	116° 52.634' W
Double Creek	Drop Point	264	45° 08.288' N	116° 51.833' W
Double Creek	Drop Point	390	45° 06.511' N	116° 51.141' W
Double Creek	Drop Point	392	45° 07.445' N	116° 50.139' W
Double Creek	Drop Point	394	45° 09.033' N	116° 49.865' W
Double Creek	Drop Point	396	45° 10.976' N	116° 47.299' W
Double Creek	Drop Point	399	45° 13.813' N	116° 46.320' W
Double Creek	Helispot	33	45° 11.045' N	116° 47.610' W
Double Creek	Helispot	34	45° 11.398' N	116° 46.060' W
Double Creek	Helispot	31	45° 09.338' N	116° 49.233' W
Nebo	Helispot	H-65	45° 04.693' N	117° 07.852' W
Double Creek	Helispot	46	45° 14.465' N	116° 50.117' W
Sturgill	Helispot	10	45° 16.591' N	117° 34.556' W
Sturgill	Helispot	12	45° 16.875' N	117° 34.528' W
Double Creek	Incident Command Post		45° 21.280' N	117° 14.103' W
Double Creek	Helibase	Joseph Helibase	45° 21.151' N	117° 15.138' W
Sturgill	Helispot	80	45° 21.170' N	117° 28.341' W
Sturgill	Helispot	50	45° 20.675' N	117° 37.613' W
Sturgill	Helispot	16	45° 21.085' N	117° 37.957' W
Double Creek	Helispot	1	45° 24.610' N	116° 44.630' W
Nebo	Helispot	55	45° 10.740' N	117° 08.957' W
Double Creek	Helispot	60	45° 23.936' N	116° 43.619' W
Double Creek	Helispot	62	45° 26.004' N	116° 41.516' W
Double Creek	Helispot	64	45° 26.234' N	116° 39.768' W
Double Creek	Helispot	70	45° 32.841' N	116° 46.260' W
Sturgill	Helispot	14	45° 17.353' N	117° 27.528' W
Double Creek	Drop Point	250	45° 22.528' N	116° 45.648' W
Double Creek	Camp	Imnaha Spike	45° 33.327' N	116° 50.102' W
Double Creek	Helispot	18	45° 09.329' N	117° 30.610' W
Double Creek	Helispot	20	45° 17.367' N	117° 16.019' W
Double Creek	Drop Point	236	45° 24.977' N	116° 47.131' W
Double Creek	Drop Point	228	45° 26.120' N	116° 47.083' W
Double Creek	Drop Point	225	45° 26.430' N	116° 47.143' W
Double Creek	Drop Point	221	45° 27.243' N	116° 47.279' W
Double Creek	Drop Point	218	45° 28.725' N	116° 47.835' W
Double Creek	Drop Point	240	45° 24.320' N	116° 47.433' W
Sturgill	Drop Point	150	45° 23.400' N	117° 25.570' W
Double Creek	Drop Point	290	45° 41.432' N	116° 47.754' W

Double Creek	Drop Point	285	45° 38.655' N	116° 50.575' W
Double Creek	Drop Point	147	45° 24.638' N	117° 25.292' W
Double Creek	Drop Point	251	45° 22.581' N	116° 47.920' W
Double Creek	Drop Point	252	45° 21.648' N	116° 48.068' W
Double Creek	Drop Point	253	45° 19.754' N	116° 48.371' W
Double Creek	Drop Point	295	45° 45.808' N	116° 44.846' W
Double Creek	Drop Point	293	45° 44.135' N	116° 46.504' W
Double Creek	Helispot	72	45° 32.125' N	116° 32.080' W
Double Creek	Helispot	74	45° 37.826' N	116° 28.508' W
Sturgill	Helispot	17	45° 22.877' N	117° 34.503' W
Double Creek	Helispot	94	45° 44.554' N	116° 45.897' W
Double Creek	Helispot	96	45° 46.159' N	116° 44.475' W
Double Creek	Helispot	98	45° 48.294' N	116° 41.316' W
Double Creek	Helispot	86	45° 40.317' N	116° 37.271' W
Double Creek	Helispot	82	45° 41.751' N	116° 33.687' W
Double Creek	Drop Point	359	45° 25.737' N	116° 50.069' W
Double Creek	Helispot	56	45° 18.803' N	116° 45.541' W
Double Creek	Helispot	54	45° 18.047' N	116° 45.043' W
Double Creek	Helispot	53	45° 17.422' N	116° 45.048' W
Double Creek	Helispot	57	45° 19.063' N	116° 43.643' W
Double Creek	Drop Point	298	45° 48.673' N	116° 44.031' W
Double Creek	Drop Point	297	45° 47.449' N	116° 44.171' W
Double Creek	Drop Point	46	45° 26.015' N	116° 41.498' W
Double Creek	Helispot	88	45° 40.267' N	116° 40.797' W
Double Creek	Drop Point	47	45° 28.962' N	116° 38.947' W

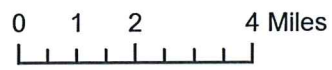


**IAP**

Sturgill  
 OR-WWF-000334  
 10/03/22

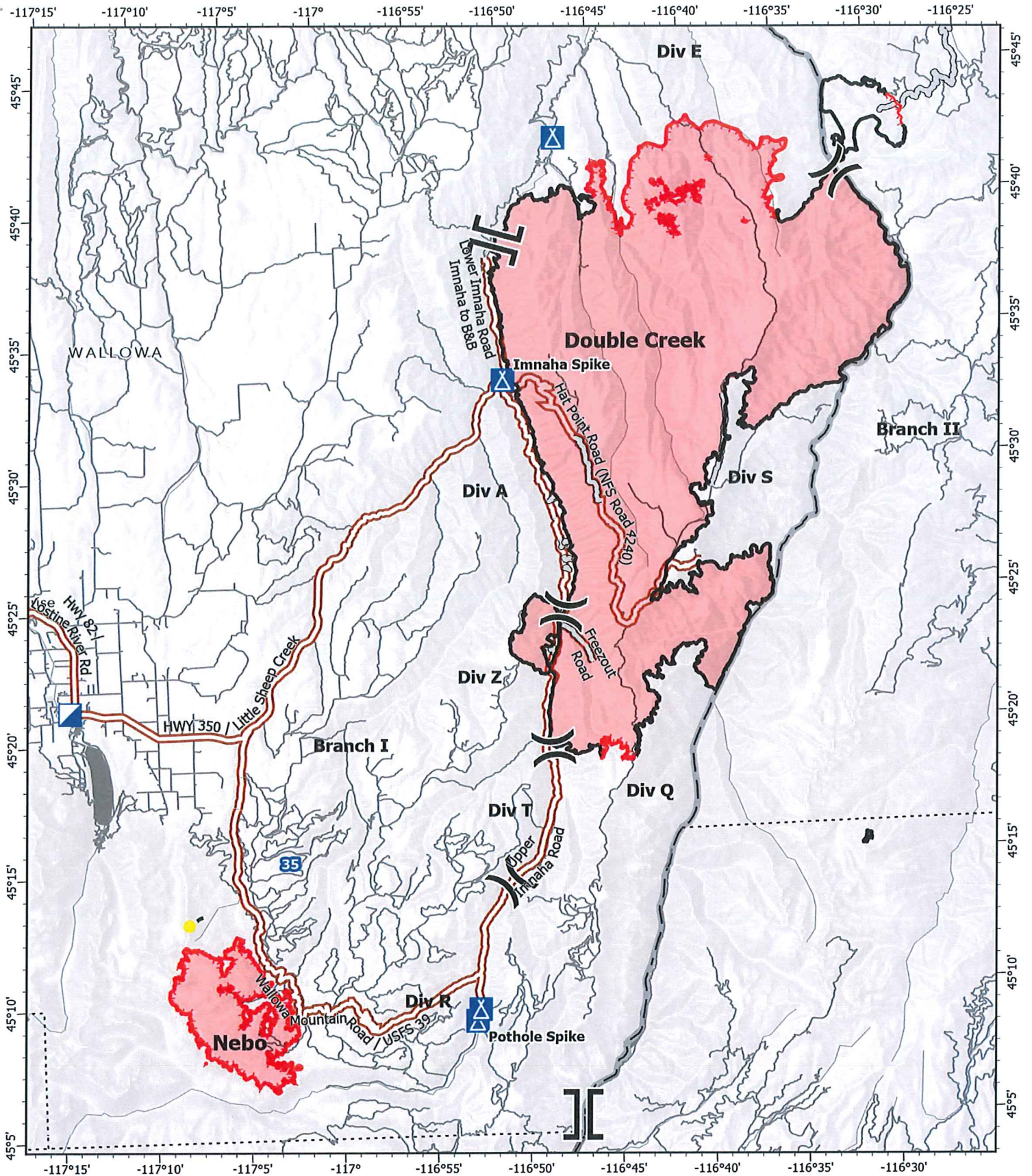
21,625 acres at 10/1/22 2153 PDT

- Incident Command Post
- Uncontained
- Highlighted Route



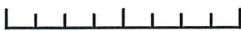
SA Blue Team  
 10/2/2022 1956  
 Acres from IR  
 North American 1983 Datum.  
 Lat/Long Grid





**IAP**  
**Double Creek**  
**OR-WWF-000400**  
**10/03/22**

171,505 acres at 10/1/22 2214 PDT  
 0 1.75 3.5 7 Miles



- X Division Break
- II Branch Break
- Incident Command Post
- Camp
- Contained
- Uncontained
- Highlighted Route



SA Blue Team  
 10/2/2022 1957  
 Acres from IR  
 North American 1983 Datum.  
 Lat/Long Grid

# IF YOU:.....

## Double Creek Incident COVID-19 Testing Guidelines

### IF YOU:

- Were exposed to COVID-19 and are NOT up to date on COVID-19 vaccinations
- Were exposed to COVID-19 and are up to date on COVID-19 vaccinations
- Develop possible symptoms of COVID-19
  - Fever or chills
  - Cough
  - Shortness of breath or difficulty breathing
  - Fatigue
  - Muscle or body aches
  - Headache
  - Sore throat
  - Congestion or runny nose
  - Nausea or vomiting
  - Diarrhea
- Feel sick, let your supervisor know and isolate. Go to the Testing Yurt located by Medical Unit at ICP or to Medical Personnel located at Imnaha Spike. Wear a mask if you are around others and socially distance.

Contact Medical Unit and get tested. We have rapid testing available on incident at ICP, Imnaha and at Pothole locations. You can request to be voluntarily tested also.

- Shanna Ellis           MEDL           318-229-6515 (ICP)
- Frank Abel            MEDL           423-595-1578 (ICP)
- Winter West         EMTF           206-661-7512 (ICP)
- Anthony Skube       MEDLT          720-633-3225 (Imnaha)

**Please adhere to your Agency guidelines for mask wearing when conditions warrant.**

**Please practice social distancing, good hand washing, and be respectful of others.**

#### \*Exposure

Contact with someone infected with SARS-CoV-2, the virus that causes COVID-19, in a way that increases the likelihood of getting infected with the virus.

#### \*Close Contact

A close contact is someone who was less than 6 feet away from an infected person (laboratory-confirmed or a clinical diagnosis) for a cumulative total of 15 minutes or more over a 24-hour period. For example, three individual 5-minute exposures for a total of 15 minutes.

## MEDICAL PLAN (206 WF)

1. Incident/Project Name				2. Operational Period					
<b>Double Creek</b>				10/3/2022 0600					
<b>3. Ambulance Services</b>									
Name	Complete Address	Phone	Advanced Life Support (ALS)						
			Yes	No					
Wallowa Memorial Hospital	601 Medical Parkway Enterprise, OR	911	<input checked="" type="checkbox"/>	<input type="checkbox"/>					
<b>4. Air Ambulance Services</b>									
Name		Phone		Type of Aircraft & Capability					
Life Flight		911 800-232-0911		Critical RN and Paramedic					
Teton Helitak-Agency Short haul		Ordered Through Air Ops 307-259-3397		BLS Short Haul					
<b>5. Hospitals</b>									
Name Address	Degrees Decimal Minutes Lat: DD° MM.MMM' N Long: DD° MM.MMM' W		Travel Time From ICP Air Gnd.		Phone	Helipad	Ident & Elevation	Level of Care	
	Lat:	45 25.997 N		5 min					15 min
Wallowa Memorial Hospital Enterprise, OR	Long:	117 17.088 W							
Providence St. Mary's Medical Center - Walla Walla, WA	Lat:	46 3.683 N		30 Min	2 hr. 15 min	509-897-3320	X	5WA3 939'	Level III Trauma
	Long:	118 20.529 W							
St. Alphonsus Regional Medical Center - Boise, ID	Lat:	43 36.815 N		40 Min	3 hr. 45 min	208-367-2121	X	1D91 2800'	Level II Trauma
	Long:	116 15.341 W							
Legacy Emanuel Hospital Portland, OR	Lat:	45° 32.668' N		60 Min	5 hr. 15 min	503-413-4684	X	34OR 234'	Level I Trauma Burn Center
	Long:	122° 40.293' W							
<b>Double Creek ICP/Helibase</b>	EMS Responders & Capability:			Frank Abel MEDL 423-595-1578, Winter West MEDLT 206-661-7512, Anthony Skube MEDLT 720-633-3225 Ambo 13 – Helibase - Andrew Belcher EMPF 570-241-7757					
	Equipment Available on Scene:			ALS, BLS					
	Medical Emergency Channel:			Phone numbers above, CMD 2					
	ETA for Ambulance to Scene:			To ICP					
	Air:			30 Min					
	Ground:			15 Min from Enterprise					
	Approved Heli-Spot			Joseph Helibase					
	Lat:			45 20.989 N					
	Long:			117 15.133 W					

## MEDICAL PLAN (206 WF)

<b>Branch I Div Q/T</b>	<b>EMS Responders &amp; Capability:</b>	<b>Medic Team 44</b> Heather Buben EMPF 907-715-4855 <b>Medic Team 48</b> Zachary Josipovich EMPF 949-525-3808 <b>REMS 30</b> Avery Mason 605-545-4293 <b>Medic Team 41</b> Jarrod Scrimshire EMPF 501-625-2626 <b>Ambo 15:</b> Sherry Amerman EMPF 404-391-1139
	Equipment Available on Scene:	4x4 Ambulance with ALS equipment 4x4 vehicle with UTV, rope rescue, extrication and ALS equipment
	Medical Emergency Channel:	Command 3
	ETA for Ambulance to Scene:	
	Air:	25 Min to Joseph Helibase (Life Flight)
	Ground:	100 - 130 Min from Enterprise
	Approved Heli-Spot	
	Lat: Long:	
<b>Branch II Div E</b>	<b>EMS Responders &amp; Capability:</b>	<b>Ambo 11</b> Sean Cariss EMPF 541-805-3005 <b>Medic Team 43</b> Chris Howard EMPF 979-571-2916 <b>Medic Team 42</b> Kris Morgan EMPF 432-254-8889 <b>REMS 31</b> Amanda Bowen EMPF 631-905-8974
	Equipment Available on Scene:	4x4 Ambulance with ALS equipment 4x4 vehicle with UTV, rope rescue, extrication and ALS equipment
	Medical Emergency Channel:	Command 1/ Division Sat phone: 619-612-9547
	ETA for Ambulance to Scene:	
	Air:	25 Min to Joseph Helibase (Life Flight)
	Ground:	110-130 min from Enterprise
	Approved Heli-Spot	
	Lat: Long:	
<b>Branch III Lostine Group</b>	<b>EMS Responders &amp; Capability:</b>	<b>Ambo 14</b> Mike Stadler 940-284-0577 <b>Med Team 47</b> Brennen Hill EMPF 385-439-7032
	Equipment Available on Scene:	4x4 Ambulance with ALS Equipment 4x4 vehicle with UTV
	Medical Emergency Channel:	Command 5
	ETA for Ambulance to Scene:	
	Air:	25 Min to Joseph Helibase (Life Flight, night capable)
	Ground:	30 min from Enterprise
	Approved Heli-Spot	
	Lat:	
	Long:	
<b>Red Horse Ranch</b>	<b>EMS Responders &amp; Capability:</b>	<b>Medic Team 45</b> Melissa Brewer EMPF 503-428-8627
	Equipment Available on Scene:	
	Medical Emergency Channel:	Command 5
	ETA for Ambulance to Scene:	
	Air:	25 Minute to Joseph Helibase
	Ground:	No Access
	Approved Heli-Spot	<b>H 50</b>
	Lat: Long:	

# MEDICAL PLAN (206 WF)

## Illness/Injury Protocol:

### Line Emergency:

Once any injury/illness has occurred:

- The highest qualified and capable person on scene assumes the IWI IC command.
- Report the emergency to La Grande Dispatch following Medical Incident Report protocol (MIR, Eight Line)
- Closest medical resources are dispatched by ICP.
- An IWI text will be sent to IWI Team members.
- Request additional resources as needed to La Grande Dispatch.
- Request patient transport mode (Incident Vehicle, Ambulance, Air etc).
- Radio traffic will be cleared until medical emergency is finished.
- DO NOT USE THE INJURED PERSON'S NAME ON THE RADIO.
- Air resources will be coordinated through Air Ops and La Grande Dispatch.
- Protects the scene. Completes and submits appropriate documentation.

La Grande dispatch: 541-963-7171 (24hr coverage)

### ICP Emergency:

- Contact Medical Unit with patient complaint/condition and location.
- ICP notifies C&G via text message group.
- Medical and Safety will assist and advise for further care as needed.

MEDL Frank Abel 423-595-1578  
MEDLT Winter West 206-661-7512  
MEDLT Anthony Skube 720-633-3225

8. Prepared By (Medical Unit Leader)	Date/Time	Reviewed By (Safety Officer)	Date/Time
Winter West MEDLT/Frank Abel	10/2/2022	Patrick Sheridan SOF1	10/2/2022
Signature: <i>Winter West</i>		Signature: /s/ Patrick Sheridan	

**Medical Incident Report**

**FOR A NON-EMERGENCY INCIDENT, WORK THROUGH CHAIN OF COMMAND TO REPORT AND TRANSPORT INJURED PERSONNEL AS NECESSARY.**

**FOR A MEDICAL EMERGENCY: IDENTIFY ON SCENE INCIDENT COMMANDER BY NAME AND POSITION AND ANNOUNCE "MEDICAL EMERGENCY" TO INITIATE RESPONSE FROM IMT COMMUNICATIONS/DISPATCH.**

**Use the following items to communicate situation to communications/dispatch.**

- 1. CONTACT COMMUNICATIONS / DISPATCH** (Verify correct frequency prior to starting report)  
Ex: "Communications, Div. Alpha, Stand-by for Emergency Traffic."
- 2. INCIDENT STATUS:** Provide incident summary (including number of patients) and command structure.  
Ex: "Communications, I have a Red priority patient, unconscious, struck by a falling tree. Requesting air ambulance to Forest Road 1 at (Lat./Long.) This will be the Trout Meadow Medical, IC is TFLD Jones. EMT Smith is providing medical care."

Severity of Emergency / Transport Priority	<input type="checkbox"/> <b>RED / PRIORITY 1</b> Life or limb threatening injury or illness. Evacuation need is <b>IMMEDIATE</b> Ex: Unconscious, difficulty breathing, bleeding severely, 2° - 3° burns more than 4 palm sizes, heat stroke, disoriented. <input type="checkbox"/> <b>YELLOW / PRIORITY 2</b> Serious injury or illness. Evacuation may be <b>DELAYED</b> if necessary. Ex: Significant trauma, unable to walk, 2° - 3° burns not more than 1-3 palm sizes. <input type="checkbox"/> <b>GREEN / PRIORITY 3</b> Minor injury or illness. Non-Emergency transport Ex: Sprains, strains, minor heat-related illness.
--	---

Nature of Injury or Illness & Mechanism of Injury		Brief Summary of Injury or Illness (Ex: Unconscious, Struck by Falling Tree)
Transport Request		Air Ambulance / Short Haul/Hoist Ground Ambulance / Other
Patient Location		Descriptive Location & Lat. / Long. (WGS84)
Incident Name		Geographic Name + "Medical" (Ex: Trout Meadow Medical)
On-Scene Incident Commander		Name of on-scene IC of Incident within an Incident (Ex: TFLD Jones)
Patient Care		Name of Care Provider (Ex: EMT Smith)

**3. INITIAL PATIENT ASSESSMENT:** Complete this section for each patient as applicable (start with the most severe patient)

Patient Assessment: See IRPG PAGE 106

Treatment:

**4. TRANSPORT PLAN:**

Evacuation Location (if different): (Descriptive Location (drop point, intersection, etc.) or Lat. / Long.) Patient's ETA to Evacuation Location:

Helispot / Extraction Site Size and Hazards:

**5. ADDITIONAL RESOURCES / EQUIPMENT NEEDS:**

*Example: Paramedic/EMT, Crews, Immobilization Devices, AED, Oxygen, Trauma Bag, IV/Fluid(s), Splints, Rope rescue, Wheeled litter, HAZMAT, Extrication*

**6. COMMUNICATIONS: Identify State Air/Ground EMS Frequencies and Hospital Contacts as applicable**

Function	Channel Name/Number	Receive (RX)	Tone/NAC *	Transmit (TX)	Tone/NAC *
COMMAND					
AIR-TO-GRND					
TACTICAL					

**7. CONTINGENCY: Considerations:** If primary options fail, what actions can be implemented in conjunction with primary evacuation method? Be thinking ahead.

**8. ADDITIONAL INFORMATION:** Updates/Changes, etc.

**REMEMBER:** Confirm ETA's of resources ordered. Act according to your level of training. Be Alert. Keep Calm. Think Clearly. Act Decisively.