



DOUBLE CREEK

OR-WWF-000400 P6P1E522 (0616)

Sturgill OR-WWF-000334 P6P02N22 (0616)

Nebo OR-WWF-000380 P6P06W22 (0616)

Incident Action Plan

Tuesday, October 4, 2022

0700 – 1900

Incident Electronic Products and Information (Check-in, IAP, Maps)



Public Information Line:

Phone 541-216-4579

Email: 2022.doublecreek@firenet.gov

INCIDENT OBJECTIVES (ICS 202)

1. Incident Name: Double Creek	2. Operational Period: Date From: 10/04/2022 Date To: 10/04/2022 Time From: 0700 Time To: 1900
3. Objective(s): <p>Leader's Intent:</p> <ul style="list-style-type: none"> • Professional responders are expected to conduct themselves in a professional manner at all times. We shall foster an environment that promotes teamwork, respect and is free from discrimination and harassment. A "zero tolerance" policy will apply to behavior determined to be inappropriate. • Ensure the Medical Plan, 8-line and short haul operations are well understood and all assigned resources are confident in the application. <p>Management Objectives:</p> <ul style="list-style-type: none"> • Human life is the most valuable resource to be protected, consequently accept no unnecessary risk. The only acceptable risk is 1) tactics that have high probability of success 2) on actions that meaningfully contribute to objectives or protection of high value resources (responders, public, communities) and 3) minimize exposure to incident responders. • Ensure proactive communication and coordination occurs regarding the incident's status and strategy with agency administrators, cooperators, communities and the public through timely press releases, informational updates, social media, meetings and other informational sharing platforms. • Protect private lands within and adjacent to uncontained/uncontrolled fire perimeter lines where the possibility of fire spread exists. • Work with Resource Advisors and minimize suppression repair impacts in the Imnaha River and tributaries to protect salmon, steelhead and Bull Trout habitat. • Protect known historic and pre-contact cultural sites by minimizing fire spread to the sites where possible, minimize suppression impacts and work with resource advisors. • Keep fire from impacting Forest Service infrastructure and values of concern, including for the Double Creek Fire: Memaloose Campground and Guard Station, Hat Point Lookout, Sacajewea and Saddle Creek Campgrounds. Sturgill Fire: Minam River Lodge, Red's Horse Ranch, Standley and Bear Creek Guard Stations. Nebo Fire: Lick Creek Guard Station and Campground, Salt Creek Summit warming hut and groomer shed, Wing Ridge, Redmont Shelter ski huts, and Big Sheep Camp Site. • Support suppression operations as requested in the delegation and provide initial attack to new unplanned ignitions within the designated geographic area and requests for assistance from the local agencies with jurisdiction. Prioritize response to ignitions that threaten infrastructure, recreational sites and private lands. • Implement and maintain effective COVID-19 prevention and mitigation measures that follow CDC guidelines and interagency protocols. • Maintain fiscal accountability and cost effectiveness as an important component of the decision-making process for the incident. • Continue suppression repair operations on fireline where containment has been identified. 	
4. Operational Period Command Emphasis: <p>Control Objectives</p> <p>Double Creek: Reinforce and secure the northern end of the fire area. Keep active fire from reaching private lands and structures. Keep fire within the confluence of the Imnaha and Snake Rivers, use natural features and Snake River as containment lines for east flank, keep fire south of Imnaha and Snake River confluence using natural control features. Patrol and monitor southern end (Divs Q/T) to prevent future growth.</p> <p>Nebo: Monitor from helicopter.</p> <p>Sturgill: Monitor from helicopter. Keep active fire from impacting private lands and structures. Goat: Patrol and monitor northern end with crews to keep fire from impacting values at risk.</p>	
General Situational Awareness	
5. Site Safety Plan Required? Yes <input type="checkbox"/> No <input type="checkbox"/> Approved Site Safety Plan(s) Located at:	
6. Incident Action Plan (the items checked below are included in this Incident Action Plan):	
<input checked="" type="checkbox"/> ICS 203 <input type="checkbox"/> ICS 207 <input checked="" type="checkbox"/> ICS 204 <input type="checkbox"/> ICS 208 <input checked="" type="checkbox"/> ICS 205 <input checked="" type="checkbox"/> Map/Chart <input type="checkbox"/> ICS 205A <input checked="" type="checkbox"/> Weather Forecast/Tides/Currents <input checked="" type="checkbox"/> ICS 206	Other Attachments: <input type="checkbox"/> _____ <input type="checkbox"/> _____ <input type="checkbox"/> _____ <input type="checkbox"/> _____
7. Prepared by: Name: Jeff Stein Position/Title: PSC3 Signature:	
8. Approved by Incident Commander: Name: Jason Lyman Signature:	
ICS 202	IAP Page 2
Date/Time: 10/03/2022 1830	

ORGANIZATIONAL ASSIGNMENT LIST (ICS 203)	1. Incident Name: Double Creek	2. Date Prepared: 10/03/2022	
3. Time Prepared: 1900 hrs	4. Operational Period: DATE: 10/04/2022 TIME: 0700-1900		
5. Incident Commanders		9. Operations Section	
Incident Commander	Jason Lyman, Isaiah Jimenez (t)	Operations Chief	Chad Rott
Safety Officer	Pat Sheridan	Branch I	
Information Officer	Dean Hazen	Branch Director	
Liaison Officers		DIVS A/Z	UNSTAFFED
HRSP		DIVS Q/T	Daniel Yturriondodeitia
6. Agency Representatives		DIVS R	UNSTAFFED
Agency	Name	Branch II	
USFS Agency Administrator	Anthony Botello, Shaun McKinney	Branch Director	
USFS Agency Representative	Brian Anderson	DIVS E	Mike Johnson
ODF Agency Administrator	Matt Howard	DIVS S	UNSTAFFED
ODF Deputy Agency Administrator	Tracy Brostrom	Branch III	
National Guard	Major Joshua Reece	Branch Director	
Landowner Liaison		DIVS NEBO	UNSTAFFED
Lead READ	Cara Lewis	DIVS LOSTINE-STURGILL-GOAT	Kit Compton
7. Planning Section		Sturgill Structure Group	Thomas Goheen, Nate Ochs (t)
Chief	Jeff Stein, Tim Tran (t)	Branch IV	
Resource Unit		Branch Director	
Documentation Unit		DIVS SUPPRESSION REPAIR	Tim Fondriest, Eric Panebaker
SCKN		DIVS Backhaul	Doug Hellinger
Demob Unit	Michael Heston	Initial Attack	
Situation Unit		d. Air Operations Branch	
FBAN		AOBD	Kelly Rudger
GISS	Bobby Dennett (t), Steve Penny (V)	ASGS	
ITSS		10. Finance Section	
IMET		Chief	A. Bryant (t), Linzi Smith (V)
TNSP		Time Unit	John Alcorn
8. Logistics Section		Personnel Time	Teri Alcorn, Lodisca Beichner (t), Linzy Scott (V)
Chief	Shaun Oliver	Equipment Time	Sam Le, Lili McGary, Luis Carrillo (V), Sarah Rietz, Kimberly Irons (t)
Deputy Chief	Alix Christman (t)	Cost Unit	Will Gordon (V)
Medical Unit Leader	Frank Abel, A. Skube (t), Winter West (t)	Comp/Claims	John Alcorn
Supply Unit	Steve Blatt	Procurement Unit	Sherry Helmick, Kevin Jackson (t)
Communications	Mike Hunter	Inbox Manager	Nancy Shadomy (V)
Facilities	Jamie Copple		
Ground Support	Evan Johnson		
Food Unit	Karen Hauter		
SECM	Shaun Oliver		

Prepared by (Resource Unit Leader)	/s/ Tim Tran
------------------------------------	--------------

Spot Forecast for **Double Creek Fire**...USFS

National Weather Service Pendleton OR
940 AM PDT Mon Oct 3 2022

.DISCUSSION...A ridge of high pressure is over the area today and tomorrow with dry and stable conditions through the forecast period. Daytime temperatures will be in the high 60s to low 70s with light winds to start shifting to the north at 5 to 6mph this afternoon. Daytime RH values will be low in the mid 20% to low 30% with poor overnight recoveries. Wind will shift to the east at 5 mph then to the south at 5 mph overnight. Wednesday will be in the low 70s with low daytime RH values in the low 20% and 5 mph south winds shifting northeast in the afternoon.

.TUESDAY...

Sky/weather.....Sunny (0-10 percent).
CWR.....0 percent.
LAL.....1.
Max temperature.....69-72.
Min humidity.....25-30 percent.
Wind (20 ft).....Light winds becoming north 5 to 6 mph in the afternoon.
Ridgetop wind.....Light winds becoming north 6 to 7 mph in the afternoon.
Mixing height.....5100 ft AGL early in the morning.
Transport winds.....Light winds.
Haines Index.....3 or very low potential for large plume dominated fire growth.

.TUESDAY NIGHT...

Sky/weather.....Mostly clear (10-20 percent).
CWR.....0 percent.
LAL.....1.
Min temperature.....49-52.
Max humidity.....49-54 percent.
Wind (20 ft).....East winds 5 to 6 mph shifting to the south around 5 mph overnight.
Ridgetop wind.....East winds 6 to 7 mph shifting to the south around 6 mph overnight.
Mixing height.....3300 ft AGL early in the evening.
Transport winds.....Light winds.
Haines Index.....4 or low potential for large plume dominated fire growth.

.WEDNESDAY...

Sky/weather.....Sunny (15-25 percent).
CWR.....0 percent.
LAL.....1.
Max temperature.....70-73.
Min humidity.....23-28 percent.
Wind (20 ft).....South winds around 5 mph shifting to the northeast in the afternoon.
Ridgetop wind.....South winds around 6 mph shifting to the northeast in the afternoon.
Mixing height.....6000 ft AGL late in the morning.
Transport winds.....Light winds.
Haines Index.....3 or very low potential for large plume dominated fire growth.

.FORECAST DAYS 3 THROUGH 7...

.THURSDAY...

Mostly clear. Lows in the lower 50s. Highs around 70. Light winds.

.FRIDAY...

Partly cloudy. Lows in the lower 50s. Highs in the upper 60s.
Light winds.

.SATURDAY...

Partly cloudy. Lows in the lower 50s. Highs in the upper 60s.
Light winds.

.SUNDAY...

Mostly clear. Lows around 50. Highs in the upper 60s.

.COLUMBUS DAY...

Mostly clear. Lows in the upper 40s. Highs in the mid 60s.

Spot Forecast for **Sturgill Fire**...USFS

National Weather Service Pendleton OR

949 AM PDT Mon Oct 3 2022

.DISCUSSION...A ridge of high pressure is over the area today and tomorrow with dry and stable conditions through the forecast period. Daytime temperatures will be in the low 60s with south winds at 5 to 8 mph to start, shifting to the west at 5 to 7 mph this afternoon. Daytime RH values will be low in the mid 20% to low 30% with poor overnight recoveries. Wind will shift to the southeast at 5 to 8 mph overnight. Wednesday will be in the low to mid 60s with low daytime RH values in the high 20% and 5 to 8 mph southeast winds shifting northwest at 5 to 6 mph in the afternoon.

.TUESDAY...

Sky/weather.....Sunny (0-10 percent).

CWR.....0 percent.

LAL.....1.

Max temperature.....60-63.

Min humidity.....27-32 percent.

Wind (20 ft).....South winds 5 to 8 mph shifting to the west 5 to 7 mph in the afternoon.

Ridgetop wind.....South winds 6 to 9 mph shifting to the west 6 to 8 mph in the afternoon.

Mixing height.....5300 ft AGL.

Transport winds.....Southwest around 5 mph.

Haines Index.....3 or very low potential for large plume dominated fire growth.

.TUESDAY NIGHT...

Sky/weather.....Mostly clear (10-20 percent).

CWR.....0 percent.

LAL.....1.

Min temperature.....Around 50.

Max humidity.....44-49 percent.

Wind (20 ft).....Southeast winds 5 to 8 mph.

Ridgetop wind.....Southeast winds 6 to 9 mph.

Mixing height.....500 ft AGL in the evening.

Transport winds.....Light winds.

Haines Index.....3 or very low potential for large plume dominated fire growth.

.WEDNESDAY...

Sky/weather.....Sunny (5-15 percent).

CWR.....0 percent.
LAL.....1.
Max temperature.....62-65.
Min humidity.....25-30 percent.
Wind (20 ft).....Southeast winds 5 to 8 mph shifting to the
northwest 5 to 6 mph in the afternoon.
Ridgetop wind.....Southeast winds 6 to 9 mph shifting to the
northwest 6 to 7 mph in the afternoon.
Mixing height.....6300 ft AGL early in the morning.
Transport winds.....Light winds.
Haines Index.....3 or very low potential for large plume
dominated fire growth.

.FORECAST DAYS 3 THROUGH 7...

.THURSDAY...

Mostly clear. Lows in the upper 40s. Highs in the lower 60s.
South winds around 5 mph.

.FRIDAY...

Partly cloudy. Lows in the upper 40s. Highs in the lower 60s.
South winds around 6 mph.

.SATURDAY...

Mostly clear. Lows in the upper 40s. Highs around 60. North winds
around 6 mph.

.SUNDAY...

Mostly clear. Lows in the mid 40s. Highs in the upper 50s.

.COLUMBUS DAY...

Mostly clear. Lows in the mid 40s. Highs in the mid 50s.

Management Action Points – Evacuation Considerations

MAP	Condition	Actions
8	If the fire crosses MAP 8 or will imminently cross this MAP. Based on the anticipated fire growth many of these actions are being taken already, with those structures nearest the fire being prioritized for structure triage and prep.	Point/zone protection of structures with defensive ignition operations as needed. Specific structures as follows: Litch Ranch, Deep Creek Ranch, Thorn Creek Guard Station, Cow Creek bridge, McLaren cabin
11	If the fire becomes established northeast of the Snake River down drainage from the Jones Creek fire consider the following actions.	Notifications to: Key values requiring protection. Assess viability of full suppression within Idaho. If point/zone protection of structures are needed the following are within the planning area: Grangeville Dispatch, Cottonwood BLM (note this is a service first fire organization with the IPNF), Grangeville dispatch, Idaho Department of Lands, Nez Perce Tribe, Idaho County Sheriff, 6 structures in Dry Creek, 4 structures in Birch Creek, 8 structures in lower Wolf Creek, 12 structures in Greta Creek
12	If the fire becomes established over MAP 11 or will become established on the Payette National Forest consider the following.	Notifications to: Assess viability of full suppression within Idaho. The planning area boundary follows Kleinschmidt Grade Road to Horse Mountain and back to the SE corner of the Hells Canyon Wilderness. Beyond the planning area in Indian there are numerous structures that may require point/zone protection - Payette NF and Payette dispatch and Adams County Sheriff
13	If the fire becomes established west of Imnaha woods to the extent that the river corridor is no longer a viable control feature consider the following:	<ul style="list-style-type: none"> • Evaluate the road system in Rich and Makin creek for indirect control features. • Evaluate and prep FS Rd 3930 for an indirect control feature located on a major ridgeline. This road system connects back to the Idaho Power utility corridor and Harl Butte Road. • Expand closure area.
14	If the fire becomes established west of the Imnaha to the extent that this control feature is longer viable consider the following actions:	<ul style="list-style-type: none"> • Point protection of Buckhorn and Eureka Cabins • Evacuation and closure of Buckhorn Campground • Prep road and trail system along Cemetery ridge as an indirect line
40	As the fire continues to move north, towards the confluence of the Imnaha and Snake Rivers provide point protection as needed for the following values:	Suggested actions include point/zone protection for both Dug Bar and Warm Springs Ranch, coordinated with ignition operations as they progress down the Imnaha River.

<p>120</p>	<p>If the fire is established or will imminently be established in the Summit Creek drainage or Hells canyon creek drainage consider the following actions:</p>	<ul style="list-style-type: none"> • In coordination with OFSM adjust evacuation levels for Imnaha River Woods subdivision and initiate point/zone protection of homes and outbuildings. • Consider expanding closure area to the south of Crazyman creek drainage • Coordinate with Idaho power on the potential need to shutdown utility line from Hells Canyon dam to the mouth of Crazyman creek (fire becoming established in Summit Creek is aligned to spread to the powerline corridor) • Prepare road system from Crazyman Creek along the powerline corridor to PO Saddle and down to the Snake River for ignitions.
<p>150</p>	<p>The fire crosses the Hells Canyon Rim South and becomes established in the Snake River drainage. The fire crossed this MAP prior to approval of the decision and suggested actions in this MAP are being implemented.</p>	<p>Point/zone protection of structures with defensive ignition operations as needed within Hells Canyon. All structures and developed assets are west of the Snake River unless noted. Structures east of the Snake River should be triaged as needed; coordinate with the Jones Creek incident. Specific structures as follows: Battle Creek Cabin, Hells Canyon visitor center, Memaloose Guard Station, Sacajewea Campground, Hat Point Lookout, McGaffe cabin ***East of Snake River</p>

“Don’t plan on luck to be safe, plan on sound risk management and good decisions”

INCIDENT: Double Creek Fire	Operational Period: 100422
------------------------------------	-----------------------------------

Major Hazards & Risks: Heavy Equipment Safety

As Wildland Firefighters we work in or around heavy equipment daily. During different phases of operations, we use them for line construction, mop up and to rehabilitate line once the fire is controlled. It is important to have good situational awareness when working around equipment. For operations on this incident dozers, chippers and masticators are being used extensively to assist in these efforts. As we start looking at rehabbing portions of the lines you will start to see excavators and road graders being added to the mix. When working around these pieces of equipment remember to:

- Stay at least 100 feet in front and 50 feet behind dozers and excavators. Chippers and masticators will require a 300–500-foot buffer to reduce the chances of being struck by a projectile.
- No one but the operator should ride on the equipment.
- Never approach equipment until you have made eye contact with the operator, all implements have been lowered and equipment is running on idle.
- During night operations use headlamps and/or glow sticks so the operator can see you.
- Equipment operators have difficulty seeing ground personnel so take responsibility for your safety and others around you.

Refer to your IRPG pg.85 Working with Heavy Equipment for additional mitigations.



DIVISION ASSIGNMENT LIST ICS-204				1. BRANCH II		2. DIVISION/GROUP E	
3. INCIDENT NAME Double Creek				4. OPERATIONAL PERIOD Date: 10/04/2022 Time: 0700-1900			
OPERATIONS PERSONNEL							
OPERATIONS: Chad Rott PLANNING OPERATIONS: Tim Tran (t) STRATEGIC OPERATIONS: DIVISION/GROUP SUPERVISOR: Mike Johnson				BRANCH DIRECTOR: AIR OPERATIONS BRANCH DIRECTOR: Kelly Rudger			
RESOURCES ASSIGNED THIS PERIOD							
STRIKE TEAM/TASK FORCE/RESOURCE DESIGNATOR		Last Shift	LEADER	NUMBER PERSONS	DROP OFF POINT/TIME	PICK UP POINT/TIME	
O-517		10/17	Chris Burford	1	JOSEPH ICP/0700	JOSEPH ICP/0700	
HC2IA C-35 NW UMF Veteran Crew		10/09	Ben Barnett	22	JOSEPH ICP/0700	JOSEPH/ ICP1900	
ENG6 E-229 OR-WWF-653		10/10	Robert Whitehall	4	JOSEPH ICP/0700	JOSEPH/ ICP1900	
FOBS 0-394		10/04	David Canning	1	JOSEPH ICP/0700	JOSEPH ICP/0700	
SOF2 (t) O-380		10/05	Chad Hyatt	1	JOSEPH ICP/0700	JOSEPH/ ICP1900	
REMS E-288 REMS 31 EMPF		10/10	Amanda Bowen	4	JOSEPH ICP/0700	JOSEPH/ ICP1900	
Medic Team E-223 Medic Team 42		10/10	Kris Morgan	2	JOSEPH ICP/0700	JOSEPH/ ICP1900	
AMB2 E-153 AMBU 11		10/17	Sean Cariss	2	JOSEPH ICP/0700	JOSEPH/ ICP1900	
CONTROL OPERATIONS: Cold trail Cow Creek. Utilize helicopter support when needed. Plan for several resources to coyote for a few days on Div E. Monitor for any fire progression near Litch Place and Deep Creek Ranch. Reference Trigger Point lines, detailed on the Field Maps Ops map, for decision points regarding structure "prep and leave" actions.							
SPECIAL INSTRUCTIONS: Work closely with adjoining divisions to provide for efficient resource sharing. Utilize Field Maps to capture any remaining information regarding suppression impacts or any site/location not yet identified. Plan for efficient backhaul of pumps, drop tanks, hose, supplies, trash, etc.							
FUNCTION	RX Freq/RX Tone	TX Freq/TX Tone	CHAN	FUNCTION	RX Freq/RX Tone	TX Freq/TX Tone	CHAN
COMMAND 1	170.6000 N/131.8	164.9625 N/123.0	1				
TACTICAL 9	168.6000 N/136.5	168.6000 N/136.5	9				
AIR TO GROUND PRI	166.6125 N	166.6125 N	13				
AIR TO GROUND TAC	168.3375 N	168.3375 N	14				
PREPARED BY (RESOURCE UNIT LEADER) Tim Tran (t)				APPROVED BY (PLANNING SECTION CHIEF) Jeff Stein		DATE 10/03/2022	TIME 2000

DIVISION ASSIGNMENT LIST

ICS-204

1. BRANCH

III

2. DIVISION/GROUP

Lostine

3. INCIDENT NAME

Double Creek

4. OPERATIONAL PERIOD

Date: 10/04/2022

Time: 0700-1900

OPERATIONS PERSONNEL

OPERATIONS: Chad Rott PLANNING OPERATIONS: Tim Tran (t)
 STRATEGIC OPERATIONS:
 DIVISION/GROUP SUPERVISOR: Kit Compton 10/13

BRANCH DIRECTOR:
 AIR OPERATIONS BRANCH DIRECTOR: Kelly Ruderger

RESOURCES ASSIGNED THIS PERIOD

STRIKE TEAM/TASK FORCE/RESOURCE DESIGNATOR	Last Shift	LEADER	NUMBER PERSONS	DROP OFF POINT/TIME	PICK UP POINT/TIME
ENG6 E-271 Eagle Cap	10/20	Joe Rivera	3	JOSEPH ICP/0700	JOSEPH ICP/1900
ENG4 E-162 Archer Mtn 311	10/10	Tom Matthews	4	JOSEPH ICP/0700	JOSEPH ICP/1900
ENG4 E-165 Fire Works Brush 410	10/04	Scott Halsey	3	JOSEPH ICP/0700	JOSEPH ICP/1900
ENG4 E-175 Chewack Wildfire	10/12	Greg Isaac	3	JOSEPH ICP/0700	JOSEPH ICP/1900
ENG4 E-178 Eagle Cap	10/23	Ezra McIntosh	3	JOSEPH ICP/0700	JOSEPH ICP/1900
CRW2 C-36 Alta Pacific AP03	10/11	Roger Lamieux	20	JOSEPH ICP/0700	JOSEPH ICP/0700
DZR4 E-343 Borgen Custom Wood	10/10	Terry Borgen	2	JOSEPH ICP/0700	JOSEPH ICP/0700
CRW2 C-37 CSR Enterprises, Inc	10/11	Roger Lamieux	2	JOSEPH ICP/0700	JOSEPH ICP/0700
CHP2 E-348 Big Bark Chipping Services	10/10	Adan Morales-Curiel	3	JOSEPH ICP/0700	JOSEPH ICP/0700
LOGL E-9005 Henderson-3740 Loader	10/19	Don Devore	1	JOSEPH ICP/0700	JOSEPH ICP/1900
LOGL E-9027 Henderson Logging	10/04	Brian Phillips	1	JOSEPH ICP/0700	JOSEPH ICP/1900
LOGL E-9032 Henderson Logging CAT Log Loader	10/10	Rick Berend	1	JOSEPH ICP/0700	JOSEPH ICP/1900
LOGT E-9028 Henderson Logging	10/10	Ethan Lowe	1	JOSEPH ICP/0700	JOSEPH ICP/1900
LOGT E-9030 Henderson Logging 2013 Peterbilt	10/10	Jess Chandler	1	JOSEPH ICP/0700	JOSEPH ICP/1900
LOGT E-9031 Henderson Logging 2016 Peterbilt	10/10	Kevin Galloway	1	JOSEPH ICP/0700	JOSEPH ICP/1900
LOGT E-9033 Henderson Logging 2006 Peterbilt 379	10/10	Lance Whitmore	1	JOSEPH ICP/0700	JOSEPH ICP/1900
DUMP E-9017 Henderson Dump Truck	10/16	Kim West	1	JOSEPH ICP/0700	JOSEPH ICP/1900
REAF O-476	10/11	Jason Wright	1	JOSEPH ICP/0700	JOSEPH ICP/0700
REAF O-471	10/08	Cynthia Armentrout	2	JOSEPH ICP/0700	JOSEPH ICP/0700
Medic Team E-305 Medic Team 44	10/10	Heather Buben	2	JOSEPH ICP/0700	JOSEPH ICP/1900

CONTROL OPERATIONS:

Continue hauling from log deck locations along shaded fuel break.

Assist with facilitating Suppression Repair operations.

SPECIAL INSTRUCTIONS:

Work closely with adjoining divisions to provide for efficient resource sharing.
 Utilize Field Maps to capture any remaining information regarding suppression impacts or any site/location not yet identified.
 Plan for efficient backhaul of pumps, drop tanks, hose, supplies, trash, etc.

FUNCTION	RX Freq/RX Tone	TX Freq/TX Tone	CHAN	FUNCTION	RX Freq/RX Tone	TX Freq/TX Tone	CHAN
COMMAND	173.4500 N/131.8	163.6875 N/110.9	5				
TACTICAL	166.7750N/136.5	166.7750 N/136.5	11				
AIR TO GROUND PRI	166.6125 N	166.6125 N	13				
AIR TO GROUND TAC	168.3375 N	168.3375 N	14				

PREPARED BY (RESOURCE UNIT LEADER) Tim Tran (t)	APPROVED BY (PLANNING SECTION CHIEF) Jeff Stein	DATE 10/02/2022	TIME 2000
--	--	--------------------	--------------

DIVISION ASSIGNMENT LIST

ICS-204

1. BRANCH <p style="text-align: center; font-size: 24px; margin: 0;">III</p>	2. DIVISION/GROUP <p style="text-align: center; font-weight: bold; margin: 0;">Sturgill Structure Group</p>
---	--

3. INCIDENT NAME <p style="text-align: center; font-size: 24px; margin: 0;">Double Creek</p>	4. OPERATIONAL PERIOD <p style="text-align: center; font-weight: bold; margin: 0;">Date: 10/04/2022 Time: 0700-1900</p>
---	--

OPERATIONS PERSONNEL

OPERATIONS: Chad Rott PLANNING OPERATIONS: Tim Tran (t) STRATEGIC OPERATIONS: DIVISION/GROUP SUPERVISOR: Thomas Goheen, Nate Ochs (t)	BRANCH DIRECTOR: AIR OPERATIONS BRANCH DIRECTOR: Kelly Rudger
--	--

RESOURCES ASSIGNED THIS PERIOD

STRIKE TEAM/TASK FORCE/RESOURCE DESIGNATOR	Last Shift	LEADER	NUMBER PERSONS	DROP OFF POINT/TIME	PICK UP POINT/TIME
WFM 0-501 White River	10/13	Alex Ferneti	8		
HRAP A-174.7	10/14	Daniel Bark	1		
HRAP A-174.9	10/14	George Nagelson	1		
HRAP A-174.11	10/14	Eric Franta	1		
HRAP 0-500.4	10/12	Tim Tran	1		
HECM(t) O-489	10/10	Anthom Weaver	1		
Medic Team E-228 Medic Team 45	10/10	Melissa Brewer	2		

CONTROL OPERATIONS:

Sat phone # 619-637-5297

Continue to improve around structures.

Monitor fire progression and utilize structure protection system in place if necessary.

SPECIAL INSTRUCTIONS:

Monitor fire activity along Minam River drainage and keep ops informed of changes.

Coordinate close with helibase and utilize aircraft as needed in order to support crews and protect structure area.

FUNCTION	RX Freq/RX Tone	TX Freq/TX Tone	CHAN	FUNCTION	RX Freq/RX Tone	TX Freq/TX Tone	CHAN
COMMAND	173.4500 N/131.8	163.6875 N/110.9	5				
TACTICAL	166.7250 N/136.5	166.7250 N/136.5	10				
AIR TO GROUND PRI	166.6125 N	166.6125 N	13				
AIR TO GROUND TAC	168.3375 N	168.3375 N	14				

PREPARED BY (RESOURCE UNIT LEADER) Tim Tran (t)	APPROVED BY (PLANNING SECTION CHIEF) Jeff Stein	DATE 10/03/2022	TIME 2000
--	--	--------------------	--------------

AIR OPERATIONS SUMMARY		Prepared By: Kelly Ruderger		Prepared: 10/3/2022		Prepared Time: 1600 Hrs	
Double Creek/Nebo/Sturgill/Goat1&2		2. OPERATIONAL PERIOD		START TIME: 0700		END TIME: 1900	
		10/04/2022		SUNRISE: 0651		SUNSET: 1822	

HIGH VELOCITY, SHIFTING, ERRATIC WINDS WILL AFFECT AIRCRAFT PERFORMANCE AND AVAILABILITY OVER THE FIRE, VISIBILITY IS AN ISSUE.

ENSURE TACTICAL AVIATION USE IS IN ALIGNMENT WITH INCIDENT PRIORITIES

TRACK WATER SOURCE USE ON COST SUMMARIES FOR EACH HELICOPTER.

*LEND/LEASE TO NEW IA OUTSIDE THE DELEGATION *

TETON HELITACK (EXTRACTION) KELLY HEIDENREICH
(435)-691-1637

TETON HELITACK
H-8HX
AGENCY SHORT-HAUL
JOSEPH HELIBASE

PROVIDE LAT/LONG DD MM DM
ELEVATION

ESTIMATED PATIENT WEIGHT

ESTIMATED TREE HEIGHT

TFR
Double Creek
2/6610
118.600

NOTAM
091115

6. PERSONNEL	NAME	PHONE #	7. FREQUENCIES	AM	FM	8. FIXED-WING Avail/ Type/ Make-Model/ N#/ Base
AOBD	Kelly Ruderger	503-341-7225	A/A TFR DBL CRK	118.600		AIRTANKERS: ORDER THRU ATGS
			A/A Sturgill Wilderness	126.225		
			A/A (Rotor Wing)	133.1250		JOSEPH AIRPORT 45 21.61 X117 15.07
ATGS	Contact Dispatch		A/G (Primary) DBL CRK	166.61250		Aerial Supervision Platforms: Upon request through La Grande Dispatch
			A/G (Tactical) DBL CRK	168.3375		Finance email: 2022.doublecreek.finance@firenet.gov
			DECK	163.100		Helibase emails: doublecreekhelibase@gmail.com
			TOLC	171.0375		
HEBM	Ryon Reed	435-210-0043				
HEBM T	Shane Dillavou	541-377-2403				
La Grande Dispatch		541-975-5415	Local S.A.R. freq. (Medevac, Life Flight)		155.805 tx 156.7	

FAA N#	TY	MAKE/ MODEL	BASE	START	AVAIL	REMARKS	FAA N#	TY	MAKE/ MODEL	BASE	START	AVAIL	REMARKS
N660FS	1	UH-60A	JSY	0700	0800	Bucket	N38HX	3	AS-350B3	JSY	0700	0800	Recon/Short-Haul
							N404HA	2	B-205++	JSY	0700	0800	Rapp/H20 etc



Controlled Unclassified Information // Basic

INCIDENT RADIO COMMUNICATIONS PLAN I-205

1. INCIDENT NAME	2. DATETIME PREPARED	3. OPERATIONAL PERIOD DATETIME
Double Creek Fire	10/03/22 1400	10/04/22 Day/Night

4. BASIC RADIO CHANNEL UTILIZATION

Ch #	Channel Name	Assignment	RX Frequency	RX Tone / NAC	TX Frequency	TX Tone / NAC	Mode Digital (D) Analog (A) Mixed (M)	Remarks
1	CMD 1	COMMAND	170.6000	131.8	164.9625	123.0	A	Buckhorn - DIV E
2	CMD 2	COMMAND	173.4500	131.8	163.6875	156.7	A	Howard - ICP
3	CMD 3	COMMAND	170.6000	131.8	164.9625	114.8	A	Lookout - DIV Q/T
4	CMD 4	COMMAND	170.6000	131.8	164.9625	167.9	A	Somers - Snake River Corridor
5	CMD 5	COMMAND	173.4500	131.8	163.6875	110.9	A	AKERS - Sturgill/Lostine
6	CMD 6	COMMAND	173.4500	131.8	163.6875	127.3	A	Pt. Prom
7	TAC 7	TACTICAL	168.0500	136.5	168.0500	136.5	A	Div A/Z
8	TAC 8	TACTICAL	168.2000	136.5	168.2000	136.5	A	Div Q/T
9	TAC 9	TACTICAL	168.6000	136.5	168.6000	136.5	A	Div E
10	TAC 10	TACTICAL	166.7250	136.5	166.7250	136.5	A	Div Sturgill/Camp/Logistics
11	TAC 11	TACTICAL	166.7750	136.5	166.7750	136.5	A	Div Lostine/Sturgill/Goat
12	TAC 12	TACTICAL	168.2500	136.5	168.2500	136.5	A	Div Suppression/Repair
13	A/G PRI	All Divs	166.6125	None	166.6125	None	A	A/G Primary
14	A/G TAC	All Divs	168.3375	None	168.3375	None	A	A/G Tactical Bucket Work
15	A/G SAR	AIR MEDICAL	155.8050	None	155.8050	156.7	A	A/G AIR MEDICAL
16	AIRGUARD	AIRGUARD	168.6250	None	168.6250	110.9	A	EMERGENCY USE ONLY

5. I-205 Prepared By **MIKE HUNTER, COMML**

Mike Hunter

SAFETY MESSAGE: PLEASE POST LOOKOUTS TO RELAY MESSAGES OUT OF POOR COVERAGE AREAS.

Controlled Unclassified Information // Basic




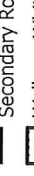

Repeaters Map

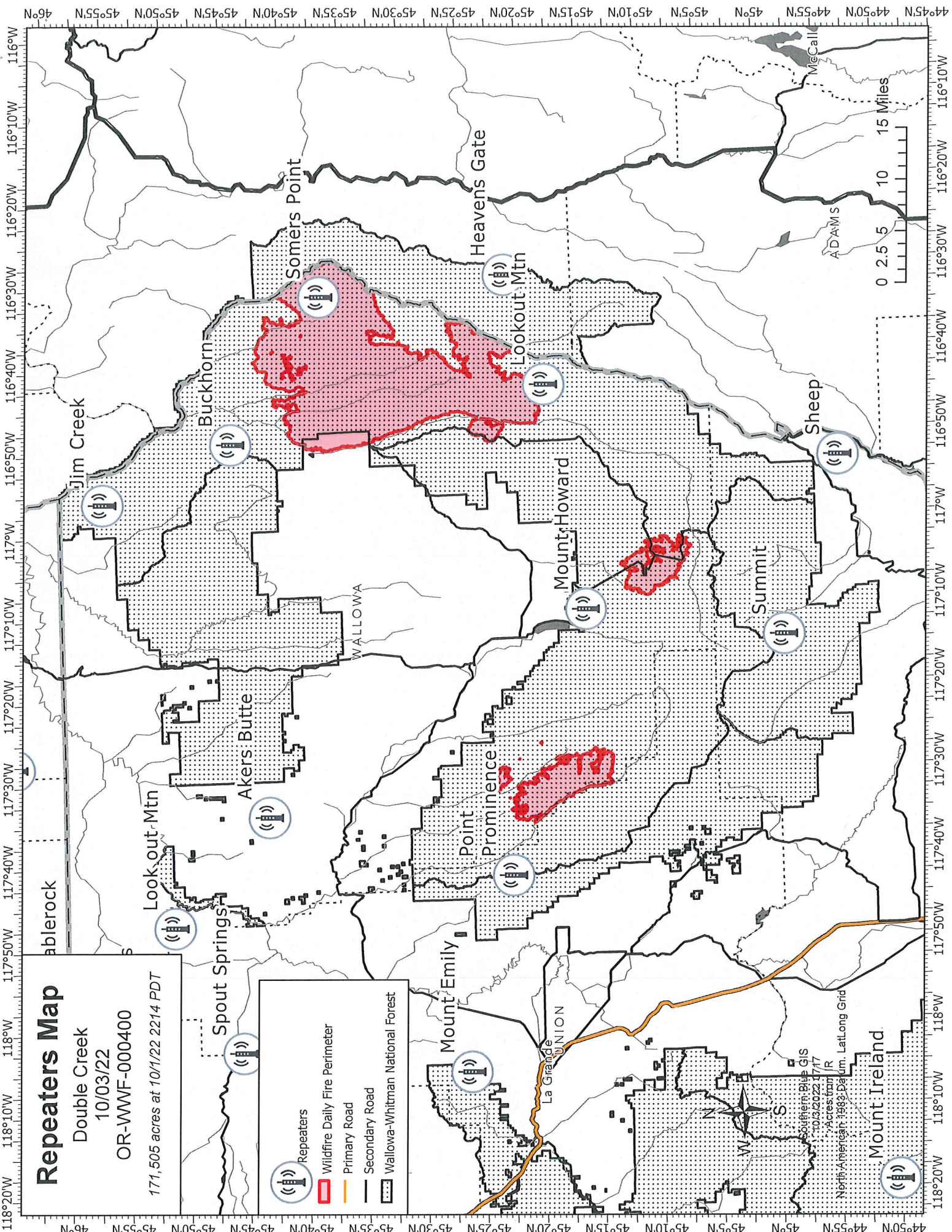
Double Creek

10/03/22

OR-WWVF-000400

171,505 acres at 10/11/22 2214 PDT

-  Repeaters
-  Wildfire Daily Fire Perimeter
-  Primary Road
-  Secondary Road
-  Wallowa-Whitman National Forest



Southern Blue GIS
10/3/2022 17:17
Access from R
North American 1983 Datum, LatLong Grid

Logistics Message

ICP/Base Camp

LOGISTICS INFORMATION

All logistic support items listed below are at ICP/Base Camp
Joseph Rodeo Grounds, 405 W Wallowa Ave, Joseph OR

FOOD

Breakfast 0600-0900

Lunches available at Reefer starting at 0600 (along with water, Gatorade and ice)

Dinner 1730-2030

GROUND SUPPORT HOURS: 0530-2130

Mechanic 0600-2100

Fuel Tender 0600-1100, 1300-2100

Weed Wash 0700-2000

ORDERING 0700-1900 For questions call 209-639-9105

Send an electronic General Message (213) or a photo (as PDF if possible) of a hard copy 213 to Ordering at 2022.doublecreek.ordering@firenet.gov

** NOTE: GM's need separated by O, E, C and S requests with Fire Name at top of page

Please include: Point of Contact with phone number, Report To/Delivery Point, and Date & Time Needed. Name requests need justification with minimum 48 hour reporting.

SUPPLY 0600-2100

SHOWERS 0500-1200 and 1400-2200

LAUNDRY 0630-1000 AND 1700-2100

Incident Phone Numbers

DMOB: 509-432-6143

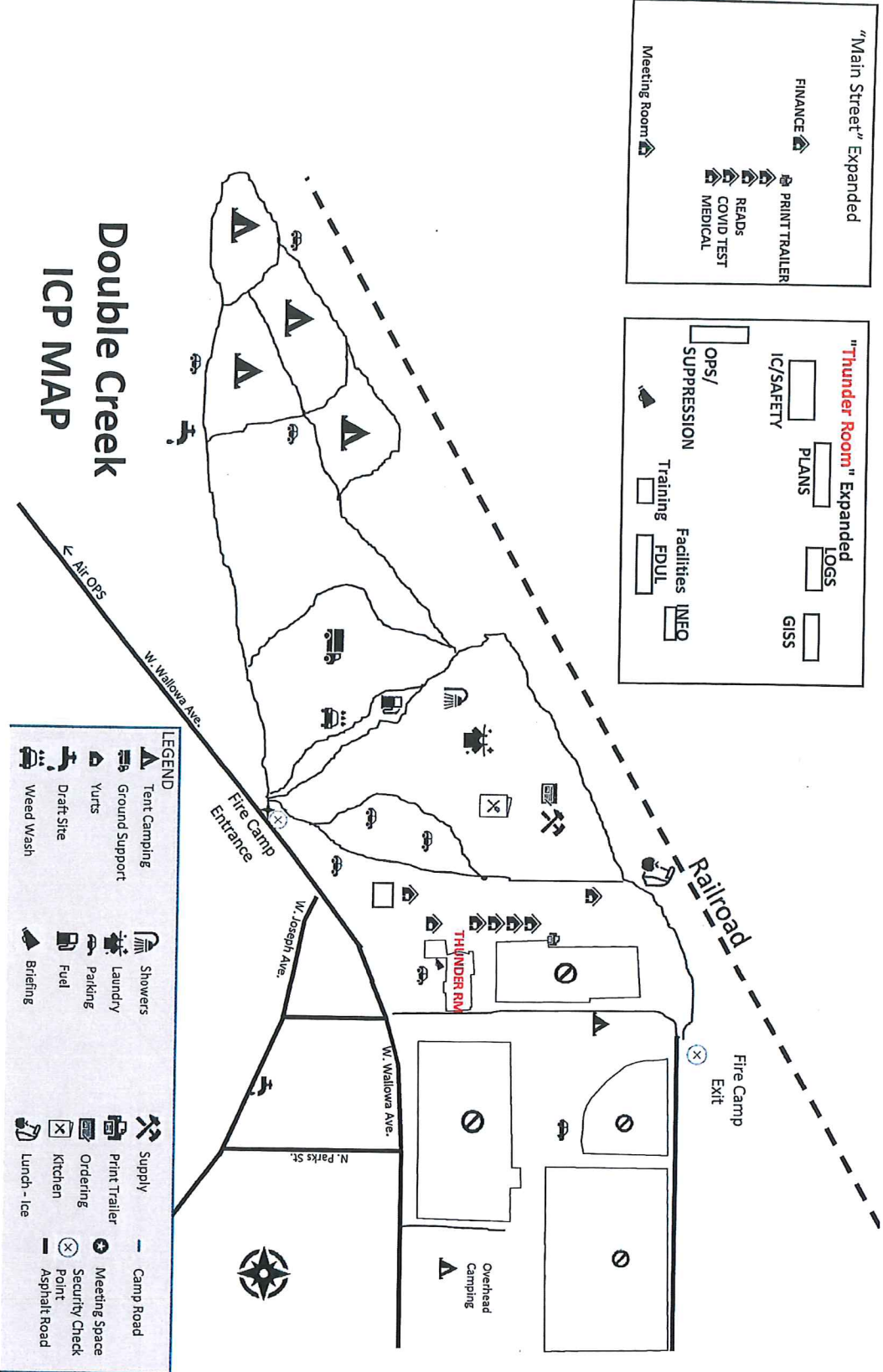
Finance: 971-346-6580

Ground Support: 907-987-3484

Communications: 206-743-1782

COVID: 206-817-9823

Double Creek ICP MAP



"Main Street" Expanded

- FINANCE
- PRINT TRAILER
- READS
- COVID TEST
- MEDICAL
- Meeting Room

"Thunder Room" Expanded

- LOGS
- GISS
- PLANS
- IC/SAFETY
- OPS/SUPPRESSION
- Training
- Facilities
- FDUL
- INFO

LEGEND

	Tent Camping		Showers		Supply
	Ground Support		Laundry		Print Trailer
	Yurts		Parking		Ordering
	Draft Site		Fuel		Kitchen
	Weed Wash		Briefing		Lunch - Ice
	Camp Road		Meeting Space		Security Check
	Asphalt Road		Point		



Finance Message

Finance Email: 2022.doublecreek.finance@firenet.gov

SUBJECT: Include Key Word **TIME** for Agency Overhead, Crews, & Cooperators

SUBJECT: Include Key Word **EQUIPMENT** for Contract Equipment, Crews and ODF IRA's

SUBJECT: Include Key Word **COST** for Buying Team, Aircraft

SUBJECT: Include Key Word **COMP** for Comp/Claims

SUBJECT: Include Key Word **CHECK IN** for ROs, Casual Hire, Red Cards

Finance Contact Numbers

EQUIPMENT: 541-571-0903 Personnel: 971-346-6580

COMP/CLAIMS: 971-346-6580

PLEASE ENSURE THE BELOW DOCUMENTS ARE EMAILED **AS ATTACHMENTS** TO:

2022.doublecreek.finance@firenet.gov

Overhead, Crews & Cooperator Resources	Contract Resources
<ul style="list-style-type: none">• Check-In: Crew Manifest, Cooperative Agreement (if applies), AD Hire Letter, Resource Order• Daily: Crew Time Report (CTR), Shift Tickets• Demob: Signed OF288, Final Equipment Use Invoice (Cooperator)	<ul style="list-style-type: none">• Check-In: Resource Order, Full Contract/Agreement, Certifications (<i>if required</i>), Pre-Inspection• Daily: Shift Tickets, receipts (fuel issues, claims, hotels, etc.)• Demob: Contractor Evaluations, Final Shift Tickets and receipt(s) for Additions/ Deductions, Post-Inspection, Final Signed Invoices

REMINDER

- ★ **LEADERS INTENT:** *I expect all emergency responders to record actual time worked each day; there are no guaranteed shift lengths to maximize time charged under policy.*
- ★ WHEN CLAIMING **HAZARD PAY** YOU MUST INCLUDE THE SUPPRESSION ACTION BEING PERFORMED. THIS INCLUDES OPERATIONS WHICH DIRECTLY SUPPORT CONTROL OF FIRE (E.G., ACTIVITIES TO EXTINGUISH THE FIRE, FIREFIGHTING, GROUND SCOUTING, SPOT FIRE PATROLLING, SEARCH AND RESCUE OPERATIONS, AND BACKFIRING). – PER PMS902 – YELLOW BOOK
- ★ PLEASE SHOW YOUR LUNCH BREAK – IF **NO BREAK SHOWN IT *MUST* BE JUSTIFIED** IN COMMENTS
- ★ **PLEASE ENSURE THE FIRE NAME (DOUBLE CREEK, STURGILL, or NEBO) IS SHOWN ON YOUR CTR OR SHIFT TICKET – IN REMARKS SECTION**

PDF files are easiest for Finance to work with, so if you could send files in that format. To scan on an iPhone go to Notes, click on new note icon, camera icon then Scan Documents. Save it and email per above instructions. On an Android you will need to download an App, most are free to download and use.

FINANCE OPPORTUNITY

Personnel Resources

RO#	NAME	ISSUE/QUESTION
O-216	Gusse, Walker	Missing CTRs 9.15 and 9.26-current
O-236	Jake Chaffin	Missing CTRs 9.28-current
O-368	Spencer, Brent	Missing 9.15-9.18 CTRs
O-394	Canning, David	Missing CTRs 9.24-current
O-424	Bournazian, Mike	Resubmit all shift tickets indicating beg & end odo each day, please.
O-434	Hill, Alan	Missing 9.24-9.25 CTRs
O-471	Armentrout, Cynthia	Missing CTRs 9.27-current
O-474	Tucker, Shelly	Missing CTR 9.30
O-488	Harris, Justin	Missing 9.26 CTR
O-492	Dutrey, Patricia	Missing CTRs 9.29-current
O-498	Lewis, Cara	Missing all CTRs 9.27-current
O-9023	Anthony Goodwater	Missing CTRs 9/29-current
O-9024	Barnes, Joe	Missing CTRs 9.24-current

Equipment Resources:

RO	Vendor Name	Issue
ALL C, E, O's	ALL	Ensure you are putting your RO# on the CTR/ST's
E-102	Black Forest	missing 9/11; 9/25; 9/27
E150	Delange Enterprises, INC	missing ST for 9/21.
E-204	Mortimore	Missing ST for 9/27.
E-219	Archer Mountain	Missing 9/28
E-226	Fireline Medics	Missing 9/17 and 9/28
E-227	Adventure Medics	Missing STs 9/16-9/18; 9/22-9/24; 9/28-current
E-260	AAA Mobile Solutions	Need Shift Tickets from 9/24 to current; and Number of Pounds each day
E-270	Flashback Fire	Missing 9/9, 9/11; 9/13; 9/17,9/29
E-274	Xtreme Wildland, INC	Missing 9/14
E-288	REMS	Missing 9/15-9/16
E-289	McKinney	Missing 9/17
E-299	Borthers Fire	Missing 9/19; 9/22
E-344	Injury care	NO ST's since 9/24
E-349	The Road Home	NO agreement and RO, but sent in shift tickets.
E-39	Premier Services	Missing 9/16, 9/18-19, 9/21-26
E-9012	Henderson Logging	Missing 9/14
E9031	Henderson Logging	Missing ST 9/23. No ST since 9/29.

Resource Advisor Message

Double Creek Fire

Water Bars

Water Bars are a barrier embedded in the line to divert water into the adjacent green.

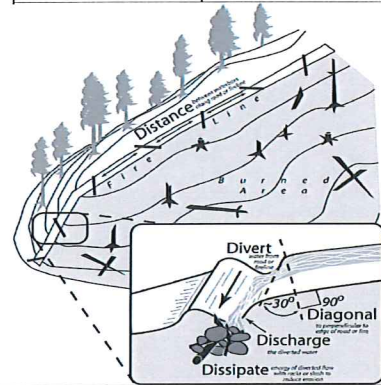
Height of water bar for handlines should average 6-12 inches, dozer line less than 18”.

- Cut in the water bar – do not simply push up loose soil because it will wash away.
- Water bars should direct runoff away from the burned area where possible.
- Assure that the down slope end of the water bar is open and has adequate length to allow free flow of water off the fire line. Extend into the green 1 foot beyond the line.
- Logs can be incorporated into water bars so long as they are embedded or anchored in a trench. Ensure fire end of log does not contact any organic material.
- Place slash below outlets of water bars to help slow runoff and collect sediment.

In selecting areas for establishing water bars the following should be considered:

- Locate bars at natural slope breaks. The idea is to move water off the fire line before it can build up enough energy to erode soil.
- When possible, locate bars where the outlet empties onto a resistant surface (i.e., rock or log debris). Flow into green, live vegetation when possible.
- Locate bar outlets to provide maximum buffer distance to stream channel.

Fire Line Slope %	Maximum Water Bar Spacing
2-10	300'
10-30	150'
30+	50'



General Repair Standards

- Public Lands – See Forest Service standards, Private Lands – See Oregon Dept. of Forestry standards
- Handlines - Pull berms back into the line and spread-out slash within the clearing limits. Install hand constructed water bars according to guidelines above. Camouflage entry points with slash, rock, or debris if available (not dirt berms).
- Dozer lines - Pull in berms and woody or rocky debris. Distribute material to resemble the surrounding area. Install water bars or checkerboard craters to roughen the surface. Reestablish drainages or stream crossings. Consult with READs for channel repair. Camouflage entry points with slash, rock, or debris if available. If entry from a road, restore drainage ditch. Seed steep segments >45% slope or as prescribed by READ/REAF.
- Roads as line – Clean out ditches and culvert inlets/outlets. Chip excess slash. Flush cut stumps created by mastication or felling where safely possible. Grade and shape specified road segments as directed by READ engineer.
- Previously closed or decommissioned roads used as line – repair to pre-fire conditions.
- Replace or repair to pre-fire condition any signs, gates, barriers, culverts, drainage features (e.g., rolling dips, road cross ditching, and lead-off ditches) and asphalt surfaces that were damaged by suppression activities.

Heritage & Cultural Resources

All cultural resources and human remains are protected. **Please leave them in place- DO NOT DISTURB OR COLLECT!** Please contact a READ if cultural resources like arrowheads, rock flakes/chips, teepee circles, tree blazes, or historic artifacts (like cans & bottles) are found. Take photos and document the location of the resource found so a READ can investigate.

Noxious Weeds

- REDUCE THE SPREAD: Brush off packs and boots (especially laces) before leaving fire camp to reduce spread and cost of treatment.
- All vehicles and equipment must see the weed wash upon arrival and de-mob to prevent the import or export of noxious invasive weeds. Wash station is located at fire camp at the rodeo grounds in Joseph.

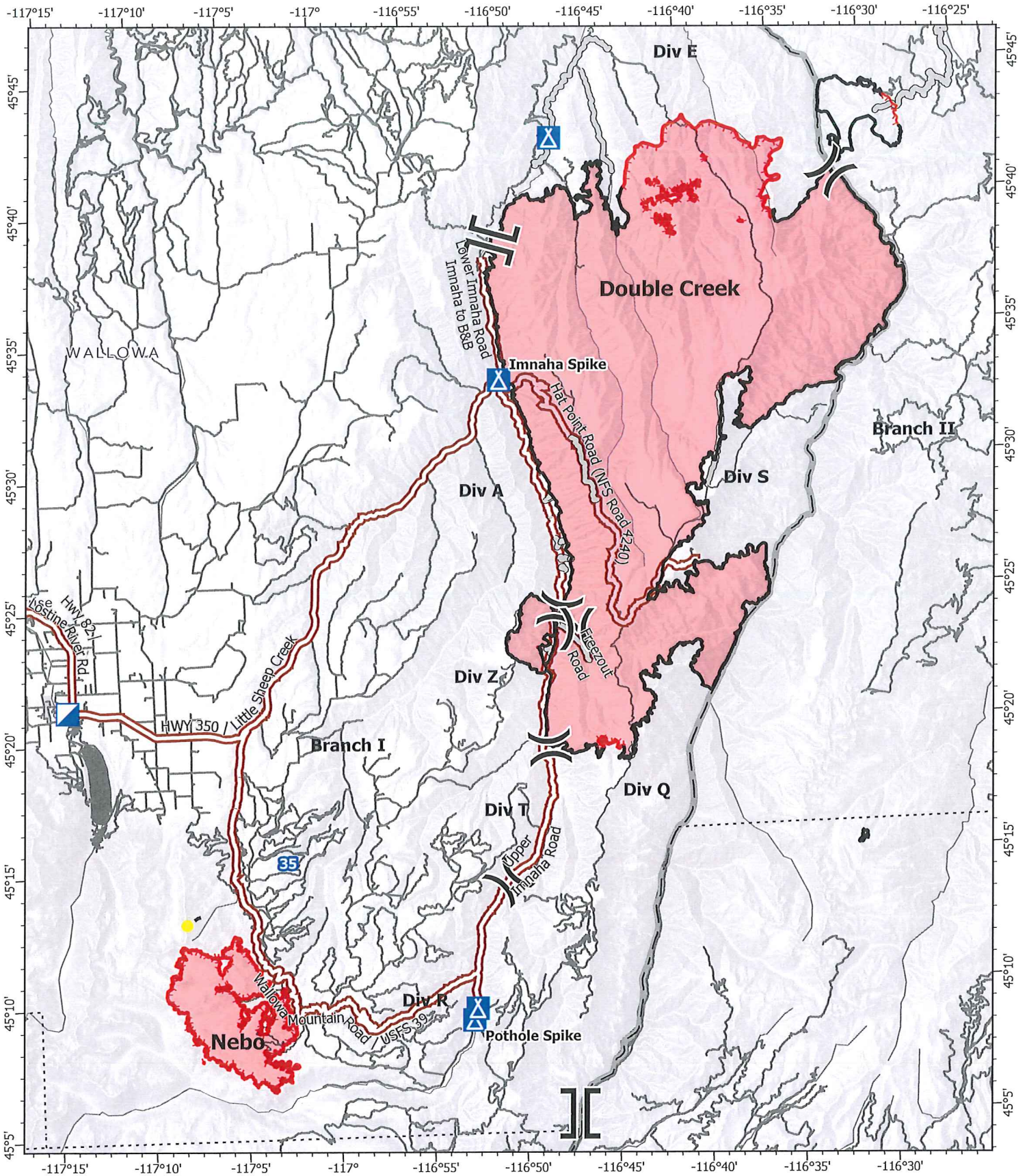
Wilderness

- Utilize Minimum Impact Suppression Tactics (MIST) to minimize resource damage within the Eagle Cap and Hells Canyon Wilderness. See page 96 of your IRPG or consult a READ/REAF. Firefighter safety, fire conditions and good judgment dictate the actions taken.
- Flush cut stumps, avoid cutting “rounds”, ensure unnatural visuals are not seen from trails.
- All other motorized activity must be approved by the Agency Administrator.
- “Leave no trace”: pack out left-over food and trash; dispose of human waste by burying in catholes 6-8inches deep 200 feet away from water, camp, and trails, cover and disguise the cathole. Toilet paper should be buried or packed out.

Chipping Standards

- Provide a 30-foot buffer of no chipping at water crossings or culverts.
- Do not deposit chips into road ditches or on slopes too steep to hold them in place. Do not spread chips into streams or the edge of streams.
- Spread chips so that they are no more than 3 inches deep, especially around the root collar of trees.

Please report resource concerns through chain of command and consult your friendly READ/REAF.



IAP

Double Creek
OR-WWF-000400

10/04/22

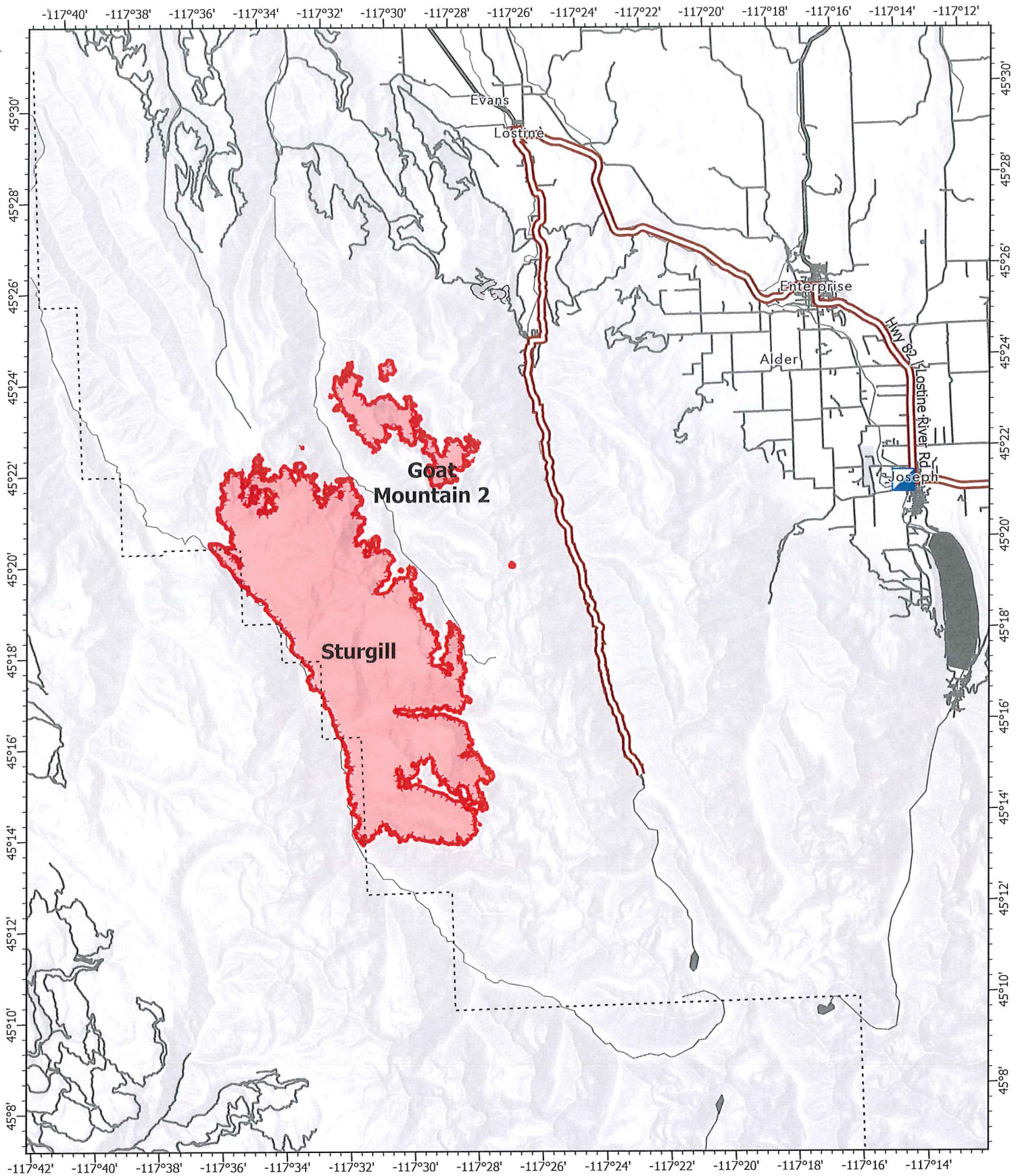
171,508 acres at 10/2/22 2131 PDT
0 1.75 3.5 7 Miles



- ⌋ Division Break
- ⌋ Branch Break
- 📍 Incident Command Post
- 📍 Camp
- ▬ Contained
- ▬ Uncontained
- ▬ Highlighted Route



W-W Type 3 Team
10/3/2022 2053
Acres from IR
North American 1983 Datum.
Lat/Long Grid



IAP

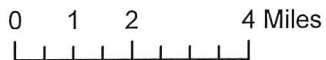
Sturgill

OR-WWF-000334

10/04/22

21,636 acres at 10/2/22 2204 PDT

- Incident Command Post
- Highlighted Route
- Uncontained



W-W Type 3 Team
 10/3/2022 2054
 Acres from IR
 North American 1983 Datum.
 Lat/Long Grid

IncidentName	FeatureCategory	Label	LatWGS84_DDM	LongWGS84_DDM
Double Creek	Drop Point	147	45° 24.638' N	117° 25.292' W
Double Creek	Drop Point	218	45° 28.725' N	116° 47.835' W
Double Creek	Drop Point	221	45° 27.243' N	116° 47.279' W
Double Creek	Drop Point	225	45° 26.430' N	116° 47.143' W
Double Creek	Drop Point	228	45° 26.120' N	116° 47.083' W
Double Creek	Drop Point	236	45° 24.977' N	116° 47.131' W
Double Creek	Drop Point	240	45° 24.320' N	116° 47.433' W
Double Creek	Drop Point	250	45° 22.528' N	116° 45.648' W
Double Creek	Drop Point	251	45° 22.581' N	116° 47.920' W
Double Creek	Drop Point	252	45° 21.648' N	116° 48.068' W
Double Creek	Drop Point	253	45° 19.754' N	116° 48.371' W
Double Creek	Drop Point	255	45° 15.658' N	116° 48.711' W
Double Creek	Drop Point	257	45° 14.163' N	116° 50.659' W
Double Creek	Drop Point	259	45° 11.611' N	116° 52.155' W
Double Creek	Drop Point	260	45° 10.849' N	116° 52.387' W
Double Creek	Drop Point	264	45° 08.288' N	116° 51.833' W
Double Creek	Drop Point	285	45° 38.655' N	116° 50.575' W
Double Creek	Drop Point	290	45° 41.432' N	116° 47.754' W
Double Creek	Drop Point	293	45° 44.135' N	116° 46.504' W
Double Creek	Drop Point	295	45° 45.808' N	116° 44.846' W
Double Creek	Drop Point	297	45° 47.449' N	116° 44.171' W
Double Creek	Drop Point	298	45° 48.673' N	116° 44.031' W
Double Creek	Drop Point	359	45° 25.737' N	116° 50.069' W
Double Creek	Drop Point	390	45° 06.511' N	116° 51.141' W
Double Creek	Drop Point	392	45° 07.445' N	116° 50.139' W
Double Creek	Drop Point	394	45° 09.033' N	116° 49.865' W
Double Creek	Drop Point	396	45° 10.976' N	116° 47.299' W
Double Creek	Drop Point	399	45° 13.813' N	116° 46.320' W
Double Creek	Drop Point	46	45° 26.015' N	116° 41.498' W
Double Creek	Drop Point	47	45° 28.962' N	116° 38.947' W
Double Creek	Helispot	1	45° 24.610' N	116° 44.630' W
Double Creek	Helispot	18	45° 09.329' N	117° 30.610' W
Double Creek	Helispot	20	45° 17.367' N	117° 16.019' W
Double Creek	Helispot	31	45° 09.338' N	116° 49.233' W
Double Creek	Helispot	33	45° 11.045' N	116° 47.610' W
Double Creek	Helispot	34	45° 11.398' N	116° 46.060' W
Double Creek	Helispot	53	45° 17.422' N	116° 45.048' W
Double Creek	Helispot	54	45° 18.047' N	116° 45.043' W
Double Creek	Helispot	56	45° 18.803' N	116° 45.541' W
Double Creek	Helispot	57	45° 19.063' N	116° 43.643' W
Double Creek	Helispot	60	45° 23.936' N	116° 43.619' W
Double Creek	Helispot	62	45° 26.004' N	116° 41.516' W
Double Creek	Helispot	64	45° 26.234' N	116° 39.768' W
Double Creek	Helispot	70	45° 32.841' N	116° 46.260' W
Double Creek	Helispot	72	45° 32.125' N	116° 32.080' W
Double Creek	Helispot	74	45° 37.826' N	116° 28.508' W
Double Creek	Helispot	82	45° 41.751' N	116° 33.687' W
Double Creek	Helispot	86	45° 40.317' N	116° 37.271' W
Double Creek	Helispot	88	45° 40.267' N	116° 40.797' W
Double Creek	Helispot	90	45° 40.778' N	116° 43.581' W
Double Creek	Helispot	94	45° 44.554' N	116° 45.897' W
Double Creek	Helispot	96	45° 46.159' N	116° 44.475' W
Double Creek	Helispot	98	45° 48.294' N	116° 41.316' W
Double Creek	Helispot	H-46	45° 14.465' N	116° 50.117' W
Double Creek	Incident Command Post		45° 21.280' N	117° 14.103' W
Nebo	Drop Point	10	45° 10.661' N	117° 06.304' W
Nebo	Drop Point	15	45° 10.295' N	117° 03.592' W
Nebo	Drop Point	20	45° 09.396' N	117° 02.027' W
Nebo	Drop Point	30	45° 08.896' N	117° 04.476' W
Nebo	Drop Point	32	45° 08.157' N	117° 03.744' W
Nebo	Drop Point	35	45° 08.046' N	117° 03.316' W
Nebo	Drop Point	40	45° 07.828' N	117° 00.186' W
Nebo	Drop Point	45	45° 07.666' N	116° 59.708' W
Nebo	Drop Point	5	45° 12.436' N	117° 04.316' W
Nebo	Helispot	15	45° 12.570' N	117° 04.274' W
Nebo	Helispot	25	45° 09.808' N	117° 01.981' W
Nebo	Helispot	35	45° 07.248' N	117° 04.729' W
Nebo	Helispot	45	45° 08.619' N	117° 07.632' W
Nebo	Helispot	5	45° 10.647' N	117° 06.204' W
Nebo	Helispot	55	45° 10.740' N	117° 08.957' W
Nebo	Helispot	H-65	45° 04.693' N	117° 07.852' W
Sturgill	Drop Point	150	45° 23.400' N	117° 25.570' W
Sturgill	Helispot	10	45° 16.591' N	117° 34.556' W
Sturgill	Helispot	12	45° 16.875' N	117° 34.528' W
Sturgill	Helispot	14	45° 17.353' N	117° 27.528' W
Sturgill	Helispot	16	45° 21.085' N	117° 37.957' W
Sturgill	Helispot	17	45° 22.877' N	117° 34.503' W
Sturgill	Helispot	50	45° 20.675' N	117° 37.613' W
Sturgill	Helispot	80	45° 21.170' N	117° 28.341' W

IF YOU:.....

Double Creek Incident COVID-19 Testing Guidelines

IF YOU:

- Were exposed to COVID-19 and are NOT up to date on COVID-19 vaccinations
- Were exposed to COVID-19 and are up to date on COVID-19 vaccinations
- Develop possible symptoms of COVID-19
 - Fever or chills
 - Cough
 - Shortness of breath or difficulty breathing
 - Fatigue
 - Muscle or body aches
 - Headache
 - Sore throat
 - Congestion or runny nose
 - Nausea or vomiting
 - Diarrhea
- Feel sick, let your supervisor know and isolate. Go to the Testing Yurt located by Medical Unit at ICP or to Medical Personnel located at Imnaha Spike. Wear a mask if you are around others and socially distance.

Contact Medical Unit and get tested. We have rapid testing available on incident at ICP, Imnaha and at Pothole locations. You can request to be voluntarily tested also.

- Frank Abel MEDL 423-595-1578 (ICP)
- Winter West MEDL(t) 206-661-7512 (ICP)

Please adhere to your Agency guidelines for mask wearing when conditions warrant.

Please practice social distancing, good hand washing, and be respectful of others.

*Exposure

Contact with someone infected with SARS-CoV-2, the virus that causes COVID-19, in a way that increases the likelihood of getting infected with the virus.

*Close Contact

A close contact is someone who was less than 6 feet away from an infected person (laboratory-confirmed or a clinical diagnosis) for a cumulative total of 15 minutes or more over a 24-hour period. For example, three individual 5-minute exposures for a total of 15 minutes.

MEDICAL PLAN (206 WF)

1. Incident/Project Name				2. Operational Period				
Double Creek				10/4/2022 0600				
3. Ambulance Services								
Name	Complete Address	Phone	Advanced Life Support (ALS)					
			Yes	No				
Wallowa Memorial Hospital	601 Medical Parkway Enterprise, OR	911	<input checked="" type="checkbox"/>	<input type="checkbox"/>				
4. Air Ambulance Services								
Name	Phone	Type of Aircraft & Capability						
Life Flight	911 800-232-0911	Critical RN and Paramedic						
Teton Helitak-Agency Short haul	Ordered Through Air Ops 307-259-3397	BLS Short Haul						
5. Hospitals								
Name Address	Degrees Decimal Minutes Lat: DD° MM.MMM' N Long: DD° MM.MMM' W		Travel Time From ICP		Phone	Helipad	Ident & Elevation	Level of Care
	Air	Gnd.						
Wallowa Memorial Hospital Enterprise, OR	Lat: 45 25.997 N Long: 117 17.088 W	5 min	15 min	541-426-3111	X	3757'	Level IV Trauma	
Providence St. Mary's Medical Center - Walla Walla, WA	Lat: 46 3.683 N Long: 118 20.529 W	30 Min	2 hr. 15 min	509-897-3320	X	5WA3 939'	Level III Trauma	
St. Alphonsus Regional Medical Center - Boise, ID	Lat: 43 36.815 N Long: 116 15.341 W	40 Min	3 hr. 45 min	208-367-2121	X	1D91 2800'	Level II Trauma	
Legacy Emanuel Hospital Portland, OR	Lat: 45° 32.668' N Long: 122° 40.293' W	60 Min	5 hr. 15 min	503-413-4684	X	34OR 234'	Level I Trauma Burn Center	
Double Creek ICP/Helibase	EMS Responders & Capability:			Frank Abel MEDL 423-595-1578, Winter West MEDLT 206-661-7512, Med Team 47 Brennen Hill EMPF 385-439-7032 (ICP) Ambo 13 – Helibase - Andrew Belcher EMPF 570-241-7757				
	Equipment Available on Scene:			ALS, BLS				
	Medical Emergency Channel:			Phone numbers above, CMD 2				
	ETA for Ambulance to Scene:			To ICP				
	Air:			30 Min				
	Ground:			15 Min from Enterprise				
	Approved Heli-Spot			Joseph Helibase				
	Lat:			45 20.989 N				
	Long:			117 15.133 W				

MEDICAL PLAN (206 WF)

Branch IV Div Suppression/ Repair	EMS Responders & Capability:	Ambo 14 Mike Stadler 940-284-0577 Medic Team 48 Zachary Josipovich EMPF 949-525-3808 REMS 30 Avery Mason 605-545-4293 Medic Team 41 Jarrod Scrimshire EMPF 501-625-2626
	Equipment Available on Scene:	4x4 Ambulance with ALS equipment 4x4 vehicle with UTV, rope rescue, extrication and ALS equipment
	Medical Emergency Channel:	Command 3
	ETA for Ambulance to Scene:	
	Air:	25 Min to Joseph Helibase (Life Flight)
	Ground:	100 - 130 Min from Enterprise
	Approved Heli-Spot	
	Lat:	
Long:		
Branch II Div E	EMS Responders & Capability:	Ambo 11 Sean Cariss EMPF 541-805-3005 Medic Team 42 Kris Morgan EMPF 432-254-8889 REMS 31 Amanda Bowen EMPF 631-905-8974
	Equipment Available on Scene:	4x4 Ambulance with ALS equipment 4x4 vehicle with UTV, rope rescue, extrication and ALS equipment
	Medical Emergency Channel:	Command 1/ Division Sat phone: 619-612-9547
	ETA for Ambulance to Scene:	
	Air:	25 Min to Joseph Helibase (Life Flight)
	Ground:	110-130 min from Enterprise
	Approved Heli-Spot	
	Lat:	
Long:		
Branch III Lostine Group	EMS Responders & Capability:	Medic Team 44 Heather Buben EMPF 907-715-4855
	Equipment Available on Scene:	4x4 Ambulance with ALS Equipment 4x4 vehicle with UTV
	Medical Emergency Channel:	Command 5
	ETA for Ambulance to Scene:	
	Air:	25 Min to Joseph Helibase (Life Flight, night capable)
	Ground:	30 min from Enterprise
	Approved Heli-Spot	
	Lat:	
	Long:	
Red Horse Ranch	EMS Responders & Capability:	Medic Team 45 Melissa Brewer EMPF 503-428-8627
	Equipment Available on Scene:	
	Medical Emergency Channel:	Command 5
	ETA for Ambulance to Scene:	
	Air:	25 Minute to Joseph Helibase
	Ground:	No Access
	Approved Heli-Spot	H 50
	Lat:	
Long:		

MEDICAL PLAN (206 WF)

Illness/Injury Protocol:

Line Emergency:

Once any injury/illness has occurred:

- The highest qualified and capable person on scene assumes the IWI IC command.
- Report the emergency to La Grande Dispatch following Medical Incident Report protocol (MIR, Eight Line)
- Closest medical resources are dispatched by ICP.
- An IWI text will be sent to IWI Team members.
- Request additional resources as needed to La Grande Dispatch.
- Request patient transport mode (Incident Vehicle, Ambulance, Air etc).
- Radio traffic will be cleared until medical emergency is finished.
- DO NOT USE THE INJURED PERSON'S NAME ON THE RADIO.
- Air resources will be coordinated through Air Ops and La Grande Dispatch.
- Protects the scene. Completes and submits appropriate documentation.

La Grande dispatch: 541-963-7171 (24hr coverage)

ICP Emergency:

- Contact Medical Unit with patient complaint/condition and location.
- ICP notifies C&G via text message group.
- Medical and Safety will assist and advise for further care as needed.

MEDL Frank Abel 423-595-1578
MEDLT Winter West 206-661-7512

8. Prepared By (Medical Unit Leader)	Date/Time	Reviewed By (Safety Officer)	Date/Time
Winter West MEDLT/Frank Abel	10/3/2022	Patrick Sheridan SOF1	10/3/2022
Signature: <i>Winter West</i>		Signature: /s/ Patrick Sheridan	

Medical Incident Report

FOR A NON-EMERGENCY INCIDENT, WORK THROUGH CHAIN OF COMMAND TO REPORT AND TRANSPORT INJURED PERSONNEL AS NECESSARY.

FOR A MEDICAL EMERGENCY: IDENTIFY ON SCENE INCIDENT COMMANDER BY NAME AND POSITION AND ANNOUNCE "MEDICAL EMERGENCY" TO INITIATE RESPONSE FROM IMT COMMUNICATIONS/DISPATCH.

Use the following items to communicate situation to communications/dispatch.

1. CONTACT COMMUNICATIONS / DISPATCH (Verify correct frequency prior to starting report)

Ex: "Communications, Div. Alpha, Stand-by for Emergency Traffic."

2. INCIDENT STATUS: Provide incident summary (including number of patients) and command structure.

Ex: "Communications, I have a Red priority patient, unconscious, struck by a falling tree. Requesting air ambulance to Forest Road 1 at (Lat./Long.) This will be the Trout Meadow Medical, IC is TFLD Jones. EMT Smith is providing medical care."

Severity of Emergency / Transport Priority	<input type="checkbox"/> RED / PRIORITY 1 Life or limb threatening injury or illness. Evacuation need is IMMEDIATE <i>Ex: Unconscious, difficulty breathing, bleeding severely, 2° - 3° burns more than 4 palm sizes, heat stroke, disoriented.</i> <input type="checkbox"/> YELLOW / PRIORITY 2 Serious Injury or illness. Evacuation may be DELAYED if necessary. <i>Ex: Significant trauma, unable to walk, 2° - 3° burns not more than 1-3 palm sizes.</i> <input type="checkbox"/> GREEN / PRIORITY 3 Minor Injury or illness. Non-Emergency transport <i>Ex: Sprains, strains, minor heat-related illness.</i>
--	--

Nature of Injury or Illness & Mechanism of Injury		Brief Summary of Injury or Illness <i>(Ex: Unconscious, Struck by Falling Tree)</i>
Transport Request		Air Ambulance / Short Haul/Hoist Ground Ambulance / Other
Patient Location		Descriptive Location & Lat. / Long. (WGS84)
Incident Name		Geographic Name + "Medical" <i>(Ex: Trout Meadow Medical)</i>
On-Scene Incident Commander		Name of on-scene IC of Incident within an Incident <i>(Ex: TFLD Jones)</i>
Patient Care		Name of Care Provider <i>(Ex: EMT Smith)</i>

3. INITIAL PATIENT ASSESSMENT: Complete this section for each patient as applicable (start with the most severe patient)

Patient Assessment: See IRPG PAGE 106

Treatment:

4. TRANSPORT PLAN:

Evacuation Location (if different): (Descriptive Location (drop point, intersection, etc.) or Lat. / Long.) Patient's ETA to Evacuation Location:

Helispot / Extraction Site Size and Hazards:

5. ADDITIONAL RESOURCES / EQUIPMENT NEEDS:

Example: Paramedic/EMT, Crews, Immobilization Devices, AED, Oxygen, Trauma Bag, IV/Fluid(s), Splints, Rope rescue, Wheeled litter, HAZMAT, Extrication

6. COMMUNICATIONS: Identify State Air/Ground EMS Frequencies and Hospital Contacts as applicable

Function	Channel Name/Number	Receive (RX)	Tone/NAC *	Transmit (TX)	Tone/NAC *
COMMAND					
AIR-TO-GRND					
TACTICAL					

7. CONTINGENCY: Considerations: If primary options fail, what actions can be implemented in conjunction with primary evacuation method? Be thinking ahead.

8. ADDITIONAL INFORMATION: Updates/Changes, etc.

REMEMBER: Confirm ETA's of resources ordered. Act according to your level of training. Be Alert. Keep Calm. Think Clearly. Act Decisively.