

Pilot Map

Windigo
1046 Acres From 8/5/22
IR Data at 2200

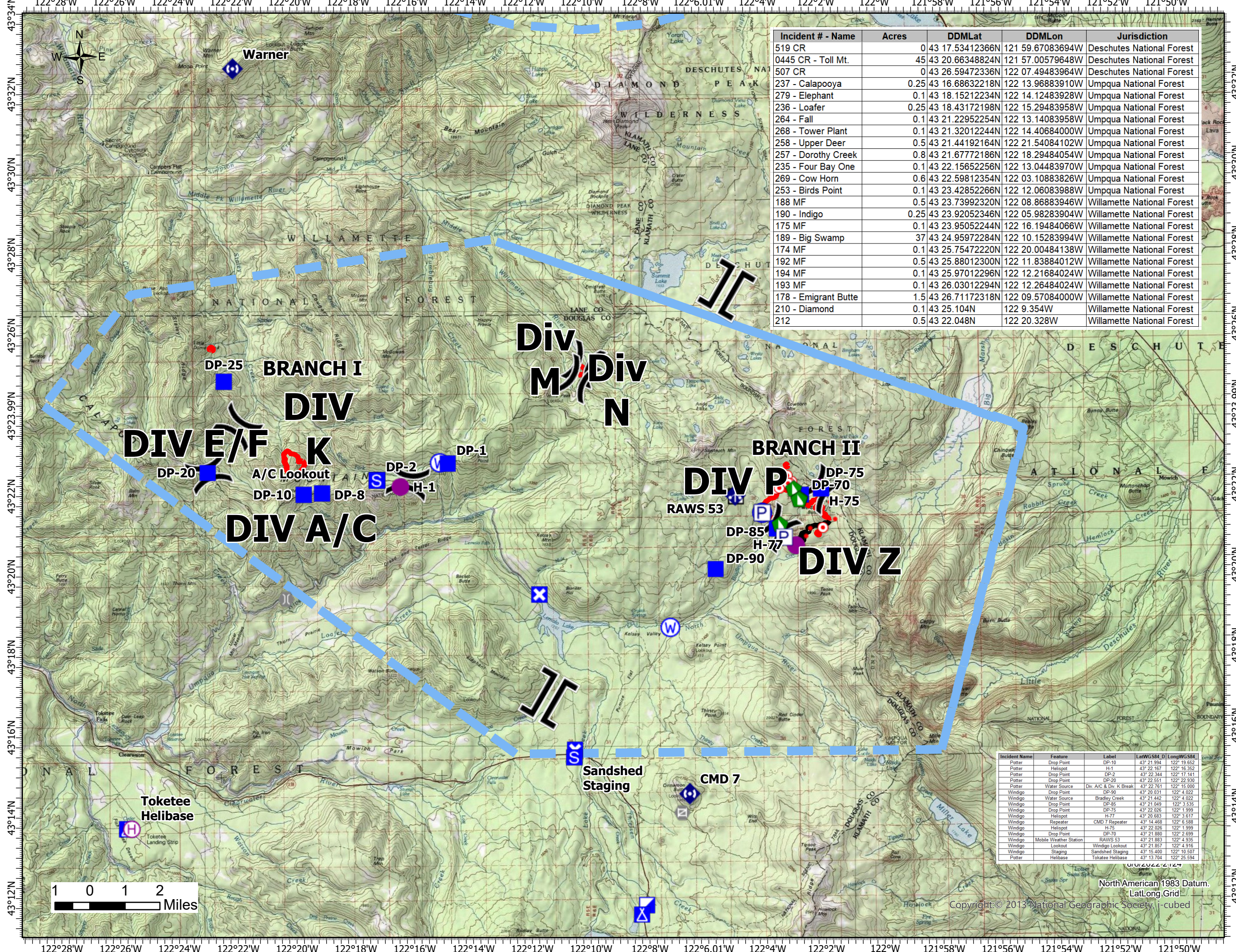
Potter
169 Acres From 8/5/22
IR Data at 2200

Big Swamp
37 Acres From 8/5/22
IR Data at 2200

Legend

- Helispot
- ⊕ Helibase
- X Division Break
- || Branch Break
- Incident Command Post
- Drop Point
- X Closure
- X Camp
- S Staging Area
- ⌂ Lookout
- Hot Spot - Spot Fire
- ⊞ Gate
- ⌈ Bridge
- ➡ Dozer Push
- Ⓜ Mobile Weather Unit
- Ⓜ Repeater
- W Water Source
- Label Point
- P Pump
- IR Isolated Heat Source
- Temporary Flight Restriction
- Contained
- Uncontained

Incident # - Name	Acres	DDMLat	DDMLon	Jurisdiction
519 CR		0 43 17.53412366N	121 59.67083694W	Deschutes National Forest
0445 CR - Toll Mt.	45	43 20.66348824N	121 57.00579648W	Deschutes National Forest
507 CR		43 26.59472336N	122 07.49483964W	Deschutes National Forest
237 - Calapooya	0.25	43 16.68632218N	122 13.96883910W	Umpqua National Forest
279 - Elephant	0.1	43 18.15212234N	122 14.12483928W	Umpqua National Forest
236 - Loafer	0.25	43 18.43172198N	122 15.29483958W	Umpqua National Forest
264 - Fall	0.1	43 21.22952254N	122 13.14083958W	Umpqua National Forest
268 - Tower Plant	0.1	43 21.32012244N	122 14.40684000W	Umpqua National Forest
258 - Upper Deer	0.5	43 21.44192164N	122 21.54084102W	Umpqua National Forest
257 - Dorothy Creek	0.8	43 21.67772186N	122 18.29484054W	Umpqua National Forest
235 - Four Bay One	0.1	43 22.15652256N	122 13.04483970W	Umpqua National Forest
269 - Cow Horn	0.6	43 22.59812354N	122 03.10883826W	Umpqua National Forest
253 - Birds Point	0.1	43 23.42852266N	122 12.06083988W	Umpqua National Forest
188 MF	0.5	43 23.73992320N	122 08.86883946W	Willamette National Forest
190 - Indigo	0.25	43 23.92052346N	122 05.98283904W	Willamette National Forest
175 MF	0.1	43 23.95052244N	122 16.19484066W	Willamette National Forest
189 - Big Swamp	37	43 24.95972284N	122 10.15283994W	Willamette National Forest
174 MF	0.1	43 25.75472220N	122 20.00484138W	Willamette National Forest
192 MF	0.5	43 25.88012300N	122 11.83884012W	Willamette National Forest
194 MF	0.1	43 25.97012296N	122 12.21684024W	Willamette National Forest
193 MF	0.1	43 26.03012294N	122 12.26484024W	Willamette National Forest
178 - Emigrant Butte	1.5	43 26.71172318N	122 09.57084000W	Willamette National Forest
210 - Diamond	0.1	43 25.104N	122 9.354W	Willamette National Forest
212	0.5	43 22.048N	122 20.328W	Willamette National Forest



Incident Name	Feature	Label	LatWG584.D	LongWG584.D
Potter	Drop Point	DP-10	43° 21' 55.2	122° 19' 55.2
Potter	Helispot	H-1	43° 22' 16.7	122° 16' 35.2
Potter	Drop Point	DP-2	43° 22' 34.4	122° 17' 14.1
Potter	Drop Point	DP-20	43° 22' 55.1	122° 22' 93.0
Potter	Water Source	Div. A/C & Div. K Break	43° 22' 76.1	122° 15' 00.0
Windigo	Drop Point	DP-90	43° 20' 03.1	122° 4' 02.2
Windigo	Water Source	Bradley Creek	43° 21' 44.2	122° 4' 02.2
Windigo	Drop Point	DP-85	43° 21' 04.9	122° 3' 53.5
Windigo	Drop Point	DP-75	43° 22' 02.6	122° 1' 99.9
Windigo	Helispot	H-77	43° 20' 58.3	122° 3' 61.7
Windigo	Repeater	CMD 7 Repeater	43° 14' 46.8	122° 6' 58.8
Windigo	Helispot	H-75	43° 22' 02.6	122° 1' 99.9
Windigo	Drop Point	DP-70	43° 21' 88.0	122° 2' 69.9
Windigo	Mobile Weather Station	RAWS 53	43° 21' 58.3	122° 4' 35.5
Windigo	Lookout	Windigo Lookout	43° 21' 58.1	122° 4' 31.6
Windigo	Staging	Sandshed Staging	43° 15' 40.0	122° 10' 50.7
Potter	Helibase	Tokatee Helibase	43° 13' 70.4	122° 25' 59.4

North American 1983 Datum.
LatLong Grid
Copyright © 2013 National Geographic Society. i-cubed