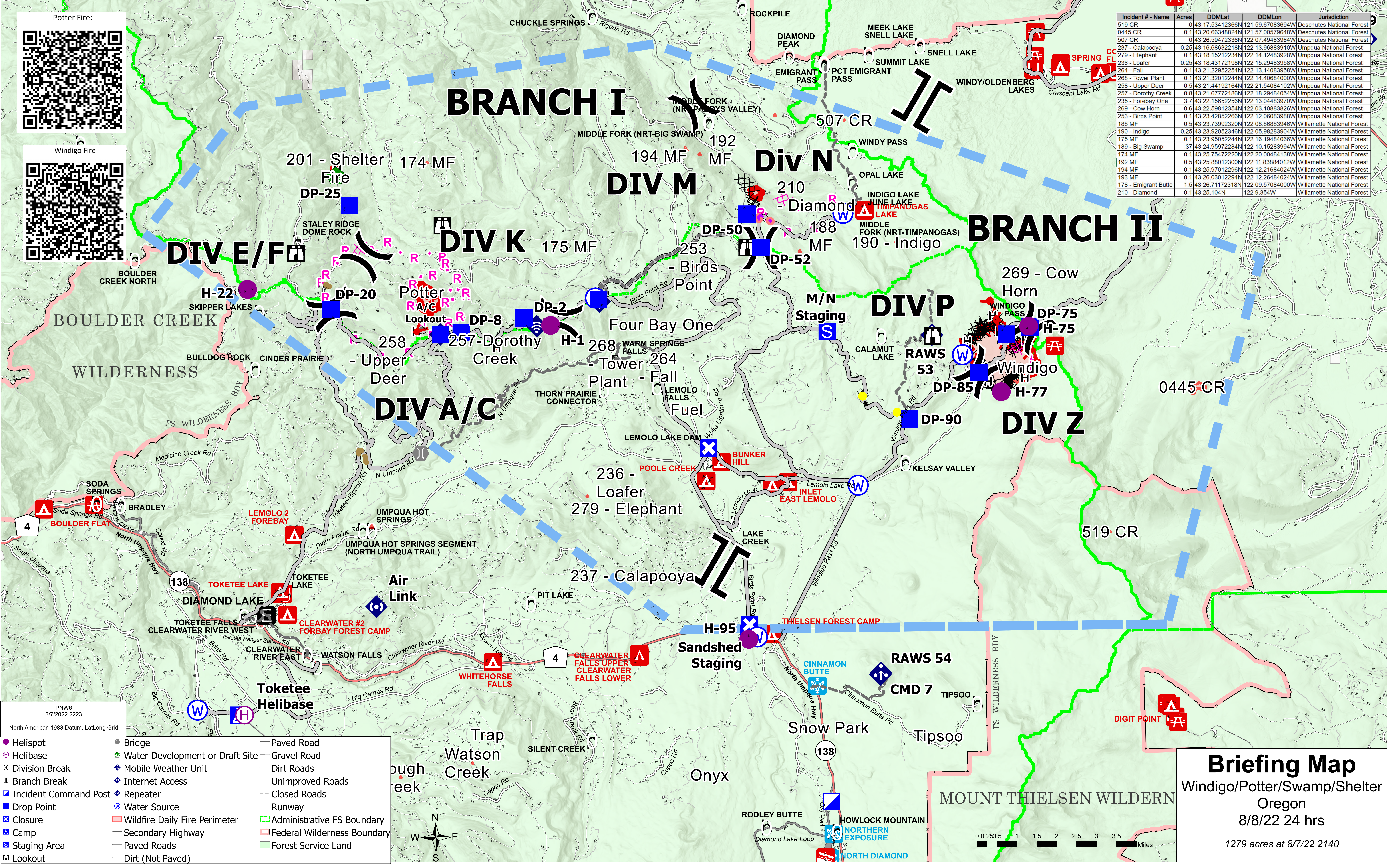


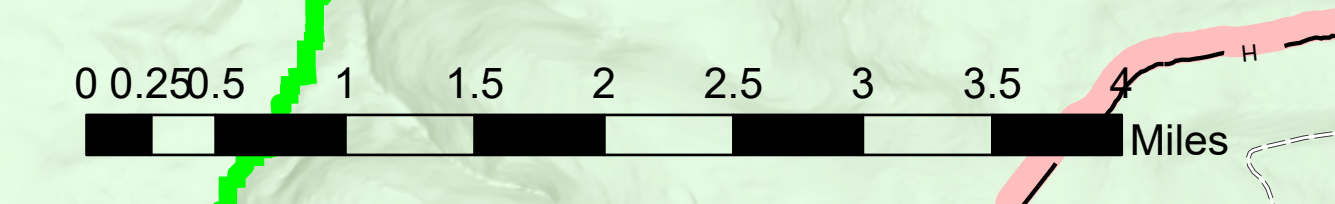
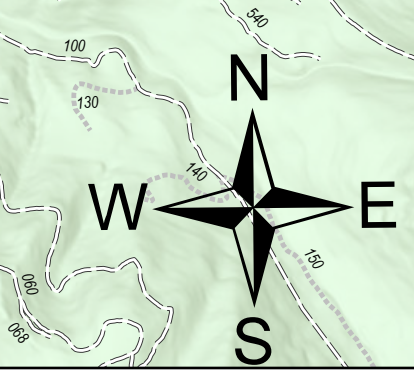


Incident # - Name	Acres	DDMLat	DDMLon	Jurisdiction
519 CR	0.43	17.53412366N	121.59.67083694W	Deschutes National Forest
0445 CR	0.1	43.20.66348824N	121.57.00579648W	Deschutes National Forest
507 CR	0	43.26.59472336N	122.07.49483964W	Deschutes National Forest
237 - Calapooya	0.25	43.16.68632218N	122.13.96883910W	Umpqua National Forest
279 - Elephant	0.1	43.18.15212234N	122.14.12483928W	Umpqua National Forest
236 - Loafer	0.25	43.18.43172198N	122.15.25483958W	Umpqua National Forest
264 - Fall	0.1	43.21.22952254N	122.13.14083958W	Umpqua National Forest
268 - Tower Plant	0.1	43.21.32012244N	122.14.40684000W	Umpqua National Forest
258 - Upper Deer	0.5	43.21.44192164N	122.21.54084102W	Umpqua National Forest
257 - Dorothy Creek	0.8	43.21.6772186N	122.18.29484054W	Umpqua National Forest
235 - Forebay One	3.7	43.22.15652256N	122.13.04483970W	Umpqua National Forest
269 - Cow Horn	0.6	43.22.59812354N	122.03.10883826W	Umpqua National Forest
253 - Birds Point	0.1	43.23.42852266N	122.12.06083988W	Umpqua National Forest
188 MF	0.5	43.23.73992320N	122.08.86883946W	Willamette National Forest
190 - Indigo	0.25	43.23.92052346N	122.05.98283904W	Willamette National Forest
175 MF	0.1	43.23.95052244N	122.16.19484066W	Willamette National Forest
189 - Big Swamp	37	43.24.95972284N	122.10.15283994W	Willamette National Forest
174 MF	0.1	43.25.75472220N	122.20.00484138W	Willamette National Forest
192 MF	0.5	43.25.88012300N	122.11.83884012W	Willamette National Forest
194 MF	0.1	43.25.97012296N	122.12.21684024W	Willamette National Forest
193 MF	0.1	43.26.03012294N	122.12.26484024W	Willamette National Forest
178 - Emigrant Butte	1.5	43.26.71172318N	122.09.57084000W	Willamette National Forest
210 - Diamond	0.1	43.25.104N	122.9.354W	Willamette National Forest



PNW6
8/7/2022 2223
North American 1983 Datum. LatLong Grid

- Helispot
- ⊕ Helibase
- ⊗ Division Break
- ⊥ Branch Break
- ⊠ Incident Command Post
- Drop Point
- ⊠ Closure
- ⊠ Camp
- ⊠ Staging Area
- ⊠ Lookout
- ⊠ Bridge
- ⊠ Water Development or Draft Site
- ⊠ Mobile Weather Unit
- ⊠ Internet Access
- ⊠ Repeater
- ⊠ Water Source
- ⊠ Paved Road
- ⊠ Gravel Road
- ⊠ Dirt Roads
- ⊠ Unimproved Roads
- ⊠ Closed Roads
- ⊠ Runway
- ⊠ Administrative FS Boundary
- ⊠ Secondary Highway
- ⊠ Paved Roads
- ⊠ Dirt (Not Paved)
- ⊠ Wildfire Daily Fire Perimeter
- ⊠ Federal Wilderness Boundary
- ⊠ Forest Service Land



Briefing Map
Windigo/Potter/Swamp/Shelter
Oregon
8/8/22 24 hrs
1279 acres at 8/7/22 2140