

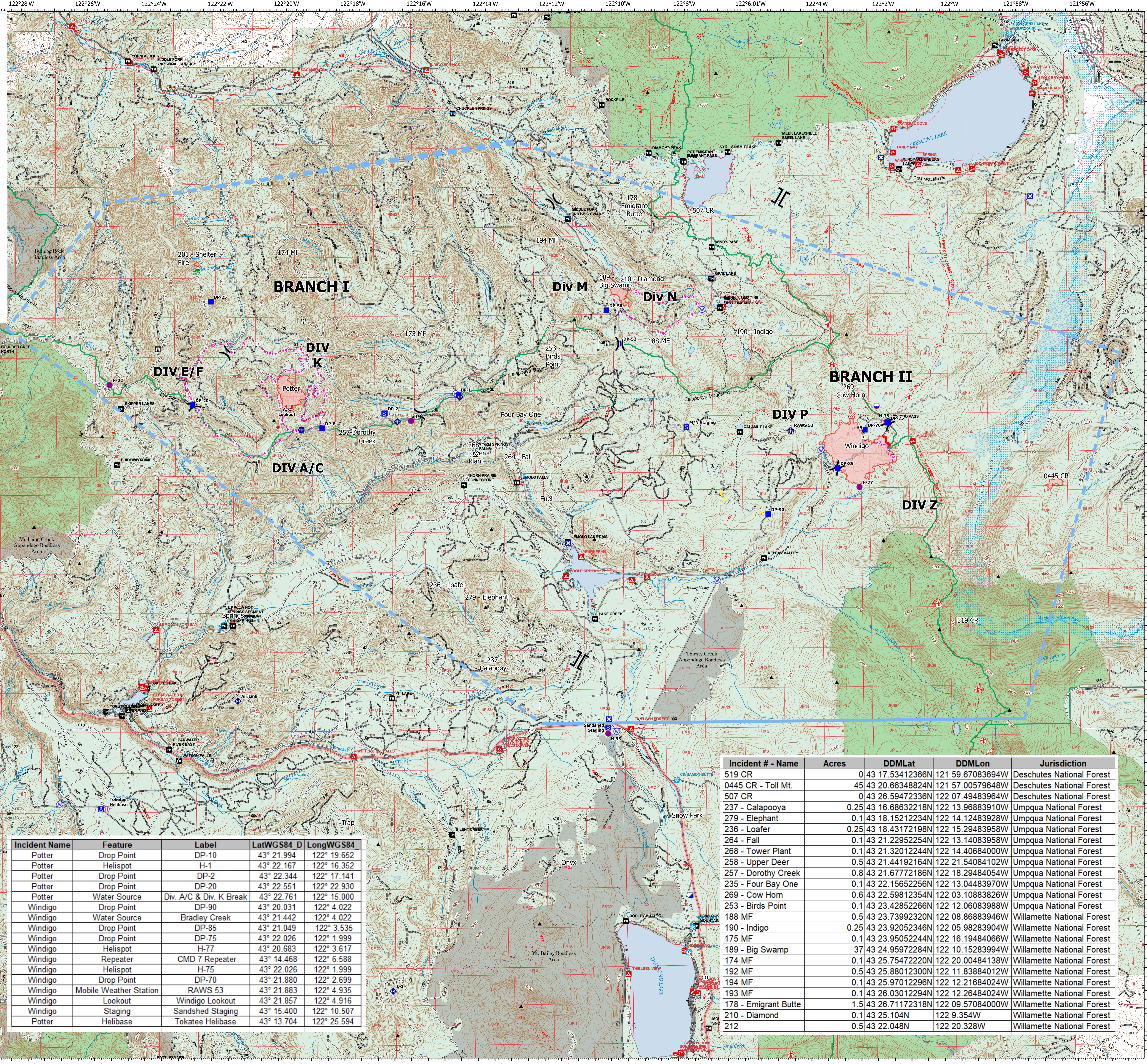
# Air Operations

## Day Shift 8/9/2022

Windigo  
OR-UPF-000234  
1052 Acres on 08/07/2022 at 2130  
Data from IR & GPS

Potter  
2022-ORWIF-220170  
185 Acres on 8/07/2022 at 2140  
Data from IR & GPS

Big Swamp  
2022-ORWIF-220189  
102 Acres on 8/07/2022 at 2130  
Data From IR & GPS



- Legend**
- Dip Site
  - Helispot
  - Helibase
  - Division Break
  - Branch Break
  - Incident Command Post
  - Drop Point
  - Closure
  - Camp
  - Staging Area
  - Lookout
  - Hot Spot - Spot Fire
  - Other
  - Gate
  - Water Development or Draft Site
  - Mobile Weather Unit
  - Internet Access
  - Repeater
  - Water Source
  - Wildfire Daily Fire Perimeter
  - Completed Road as Line
  - Planned Dozer Line
  - Planned Hand Line
  - Planned Mixed Construction Line
  - Planned Road as Line
  - Access or Improved Road
  - Highlighted Feature
  - Other
  - Repair Line
  - Road Repair
  - Retardant Drop
  - Temporary Flight Restriction
  - Fire Edge (Field Collection)

Incident Name	Feature	Label	LatWGS84 D	LongWGS84
Potter	Drop Point	DP-10	43° 21.994	122° 19.652
Potter	Helispot	H-1	43° 22.167	122° 16.352
Potter	Drop Point	DP-2	43° 22.344	122° 17.141
Potter	Drop Point	DP-20	43° 22.551	122° 22.930
Potter	Water Source	Div. A/C & Div. K Break	43° 22.761	122° 15.000
Windigo	Drop Point	DP-90	43° 20.031	122° 4.022
Windigo	Water Source	Bradley Creek	43° 21.442	122° 4.022
Windigo	Drop Point	DP-85	43° 21.049	122° 3.535
Windigo	Drop Point	DP-75	43° 22.026	122° 1.999
Windigo	Helispot	H-77	43° 20.683	122° 3.617
Windigo	Repeater	CMD 7 Repeater	43° 14.468	122° 6.588
Windigo	Helispot	H-75	43° 22.026	122° 1.999
Windigo	Drop Point	DP-70	43° 21.880	122° 2.699
Windigo	Mobile Weather Station	RAWS 53	43° 21.883	122° 4.935
Windigo	Lookout	Windigo Lookout	43° 21.857	122° 4.916
Windigo	Staging	Sandshed Staging	43° 15.400	122° 10.507
Potter	Helibase	Tokatee Helibase	43° 13.704	122° 25.594

Incident # - Name	Acres	DDMLat	DDMLon	Jurisdiction
519 CR	0.43	17.53412366N	121.59.67083694W	Deschutes National Forest
0445 CR - Toll Mt.	45	43.20.66348824N	121.57.00579648W	Deschutes National Forest
507 CR	0.43	26.59472336N	122.07.49483964W	Deschutes National Forest
237 - Calapooya	0.25	43.16.68632218N	122.13.96883910W	Umpqua National Forest
279 - Elephant	0.1	43.18.15212234N	122.14.12483928W	Umpqua National Forest
236 - Loafer	0.25	43.18.43172198N	122.15.29483958W	Umpqua National Forest
264 - Fall	0.1	43.21.22952254N	122.13.14083958W	Umpqua National Forest
258 - Upper Deer	0.5	43.21.44192164N	122.21.54084102W	Umpqua National Forest
257 - Dorothy Creek	0.8	43.21.67772186N	122.18.29484054W	Umpqua National Forest
235 - Four Bay One	0.1	43.22.15652256N	122.13.04483970W	Umpqua National Forest
269 - Cow Horn	0.6	43.22.59812354N	122.03.10883826W	Umpqua National Forest
253 - Birds Point	0.1	43.23.42852266N	122.12.06083988W	Umpqua National Forest
188 MF	0.5	43.23.73992320N	122.08.86883946W	Willamette National Forest
190 - Indigo	0.25	43.23.92052346N	122.05.98283904W	Willamette National Forest
175 MF	0.1	43.23.95052244N	122.16.19484066W	Willamette National Forest
189 - Big Swamp	37	43.24.95972284N	122.10.15283994W	Willamette National Forest
174 MF	0.1	43.25.75472220N	122.20.00484138W	Willamette National Forest
192 MF	0.5	43.25.88012300N	122.11.83884012W	Willamette National Forest
194 MF	0.1	43.25.97012296N	122.12.21684024W	Willamette National Forest
193 MF	0.1	43.26.03012294N	122.12.26484024W	Willamette National Forest
178 - Emigrant Butte	1.5	43.26.71172318N	122.09.57084000W	Willamette National Forest
210 - Diamond	0.1	43.25.104N	122.9.354W	Willamette National Forest
212	0.5	43.22.048N	122.20.328W	Willamette National Forest

