

# Pilot Map

Windigo  
OR-UPF-000234  
1007 acres

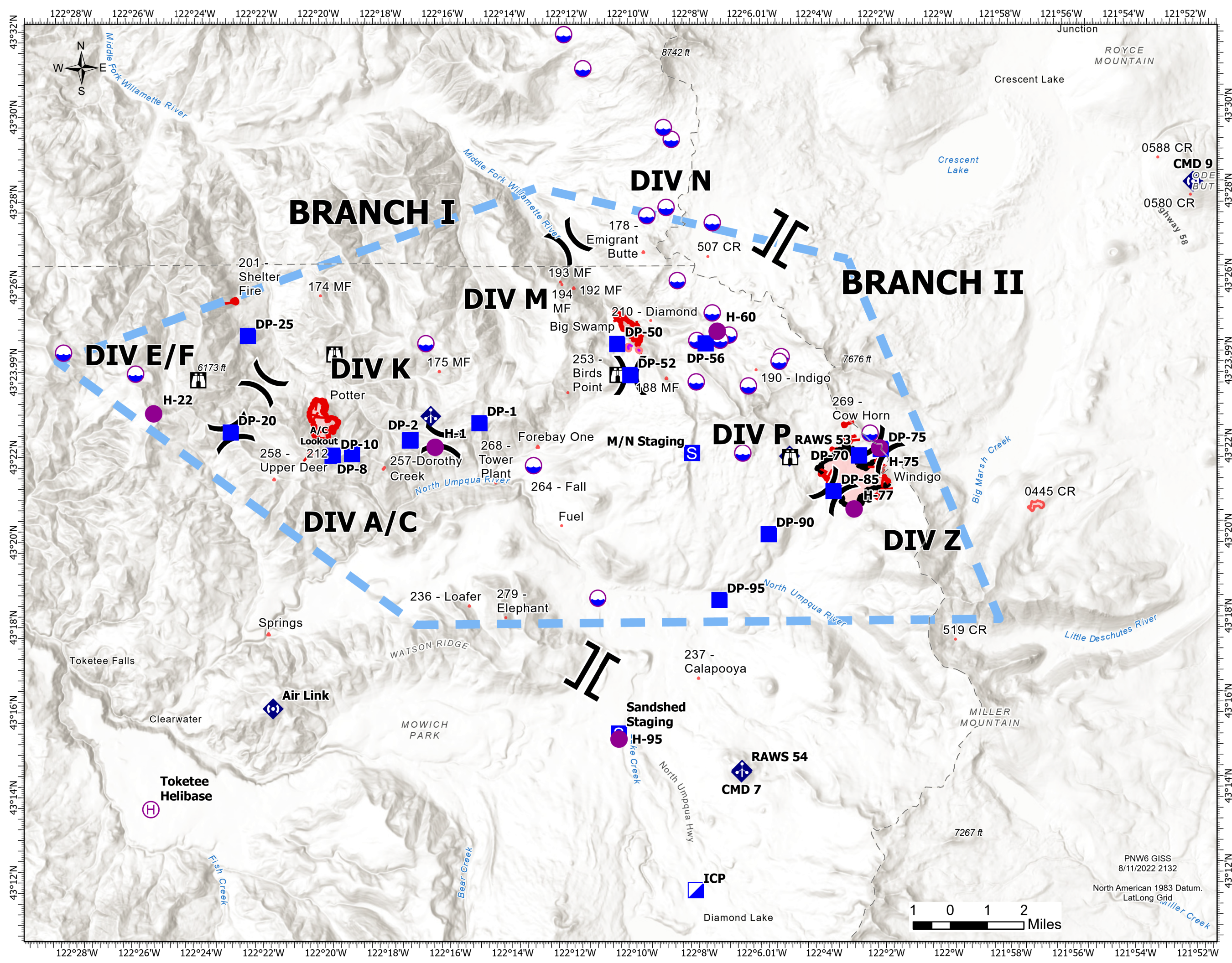
Potter  
OR-WIF-220170  
314 acres

Big Swamp  
OR-WIF-220189  
119 acres

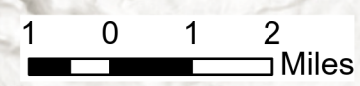
Acres at 8/11/2022 2129

8/12/2022 24 hrs

- Wildfire Daily Fire Perimeter
- Retardant Drop
- Temporary Flight Restriction
- Dip Site
- Helispot
- Helibase
- Division Break
- Branch Break
- Incident Command Post
- Drop Point
- Staging Area
- Lookout
- Mobile Weather Unit
- Repeater



PNW6 GISS  
8/11/2022 2132  
North American 1983 Datum.  
LatLong Grid



Incident Name	FC Point Type	Label	Latitude WGS84 DDM	Longitude WGS84 DDM
Big Swamp	Division Break	Div M/N break	43° 23.821' N	122° 10.032' W
Big Swamp	Drop Point	DP-52	43° 23.826' N	122° 10.028' W
Big Swamp	Drop Point	DP-50	43° 24.561' N	122° 10.439' W
Big Swamp	Drop Point	DP-56	43° 24.553' N	122° 07.593' W
Big Swamp	Helispot	H-60	43° 24.835' N	122° 07.219' W
Big Swamp	Lookout		43° 23.833' N	122° 10.440' W
Big Swamp	Dip Site		43° 24.223' N	122° 05.169' W
Big Swamp	Dip Site		43° 24.113' N	122° 05.237' W
Big Swamp	Dip Site		43° 23.543' N	122° 06.234' W
Big Swamp	Dip Site		43° 23.651' N	122° 07.910' W
Big Swamp	Dip Site		43° 24.623' N	122° 07.878' W
Big Swamp	Dip Site		43° 25.269' N	122° 07.372' W
Big Swamp	Dip Site		43° 26.037' N	122° 08.487' W
Big Swamp	Dip Site		43° 24.744' N	122° 06.844' W
Big Swamp	Dip Site		43° 24.624' N	122° 07.130' W
Big Swamp	Division Break	Div M/N break	43° 26.960' N	122° 11.995' W
Potter	Division Break		43° 22.320' N	122° 16.092' W
Potter	Division Break		43° 23.704' N	122° 21.863' W
Potter	Division Break		43° 22.554' N	122° 22.905' W
Potter	Drop Point	DP-10	43° 21.994' N	122° 19.652' W
Potter	Drop Point	DP-20	43° 22.556' N	122° 22.924' W
Potter	Drop Point	DP-2	43° 22.346' N	122° 17.139' W
Potter	Drop Point	DP-25	43° 24.824' N	122° 22.349' W
Potter	Drop Point	DP-8	43° 22.027' N	122° 19.028' W
Potter	Drop Point	DP-1	43° 22.728' N	122° 14.915' W
Potter	Helibase	Tokete Helibase	43° 13.705' N	122° 25.595' W
Potter	Helispot	H-1	43° 22.171' N	122° 16.349' W
Potter	Helispot	H-22	43° 23.009' N	122° 25.418' W
Potter	Lookout		43° 23.791' N	122° 23.959' W

Incident Name	FC Point Type	Label	Latitude WGS84 DDM	Longitude WGS84 DDM
Potter	Staging Area		43° 22.335' N	122° 17.158' W
Potter	Lookout		43° 24.373' N	122° 19.567' W
Windigo	Branch Break		43° 26.994' N	122° 05.155' W
Windigo	Branch Break		43° 16.880' N	122° 11.357' W
Windigo	Division Break		43° 21.048' N	122° 03.533' W
Windigo	Division Break		43° 22.004' N	122° 02.016' W
Windigo	Drop Point	DP-90	43° 20.052' N	122° 05.632' W
Windigo	Drop Point	DP-70	43° 21.880' N	122° 02.699' W
Windigo	Drop Point	DP-95	43° 18.517' N	122° 07.237' W
Windigo	Helispot	H-75	43° 22.050' N	122° 02.037' W
Windigo	Helispot	H-77		
Windigo	Helispot	H-95	43° 15.270' N	122° 10.509' W
Windigo	Lookout		43° 21.857' N	122° 04.917' W
Windigo	Mobile Weather Unit	RAWS 53	43° 21.883' N	122° 04.935' W
Windigo	Mobile Weather Unit	RAWS 54	43° 14.509' N	122° 06.570' W
Windigo	Repeater	CMD 9	43° 28.229' N	121° 51.817' W
Windigo	Repeater	Air Link	43° 16.051' N	122° 21.629' W
Windigo	Staging Area	Sandshed Staging	43° 15.401' N	122° 10.507' W
Windigo	Dip Site		43° 21.966' N	122° 06.437' W
Windigo	Dip Site		43° 18.588' N	122° 11.153' W
Windigo	Dip Site		43° 21.720' N	122° 13.187' W
Windigo	Dip Site		43° 24.450' N	122° 28.307' W
Windigo	Dip Site		43° 23.946' N	122° 25.991' W
Windigo	Dip Site		43° 22.401' N	122° 02.337' W
Windigo	Drop Point	DP-85	43° 21.047' N	122° 03.534' W
Windigo	Drop Point	DP-75	43° 22.027' N	122° 02.000' W
Windigo	Mobile Weather Unit		43° 22.901' N	122° 16.481' W
Windigo	Repeater	CMD 7	43° 14.468' N	122° 06.588' W
Windigo	Staging Area	M/N Staging	43° 21.980' N	122° 08.070' W

Incident # - Name	Acres	DMLat	DMLon	Jurisdiction
0445 CR - Toll Mt.	45	43° 20.66348824N	121° 57.00579648W	Deschutes National Forest
237 - Calapooya	0.25	43° 16.68632218N	122° 7.935W	Umpqua National Forest
279 - Elephant	0.1	43° 18.15212234N	122° 14.12483928W	Umpqua National Forest
236 - Loafer	0.25	43° 18.43172198N	122° 15.29483958W	Umpqua National Forest
264 - Fall	0.1	43° 21.22952254N	122° 13.14083958W	Umpqua National Forest
268 - Tower Plant	0.1	43° 21.32012244N	122° 14.40684000W	Umpqua National Forest
258 - Upper Deer	0.5	43° 21.44192164N	122° 21.54084102W	Umpqua National Forest
257 - Dorothy Creek	0.8	43° 21.67772186N	122° 18.29484054W	Umpqua National Forest
235 - Four Bay One	0.1	43° 22.15652256N	122° 13.04483970W	Umpqua National Forest
269 - Cow Horn	0.6	43° 22.59812354N	122° 03.10883826W	Umpqua National Forest
253 - Birds Point	0.1	43° 23.42852266N	122° 12.06083988W	Umpqua National Forest
188 MF	0.5	43° 23.73992320N	122° 08.86883946W	Willamette National Forest
190 - Indigo	0.25	43° 23.92052346N	122° 05.98283904W	Willamette National Forest
175 MF	0.1	43° 23.95052244N	122° 16.19484066W	Willamette National Forest
174 MF	0.1	43° 25.75472220N	122° 20.00484138W	Willamette National Forest
192 MF	0.5	43° 25.88012300N	122° 11.83884012W	Willamette National Forest
194 MF	0.1	43° 25.97012296N	122° 12.21684024W	Willamette National Forest
193 MF	0.1	43° 26.03012294N	122° 12.26484024W	Willamette National Forest
178 - Emigrant Butte	1.5	43° 26.71172318N	122° 09.57084000W	Willamette National Forest
210 - Diamond	0.1	43° 25.104N	122° 9.354W	Willamette National Forest
212	0.5	43° 22.048N	122° 20.355W	Willamette National Forest
187 - Paddy Valley		43° 26.720N	122° 9.575W	Willamette National Forest