

# Air Operations

Windigo  
OR-UPF-000234  
Approx. 1007 ac

Potter  
OR-WIF-220170  
Approx. 345 ac

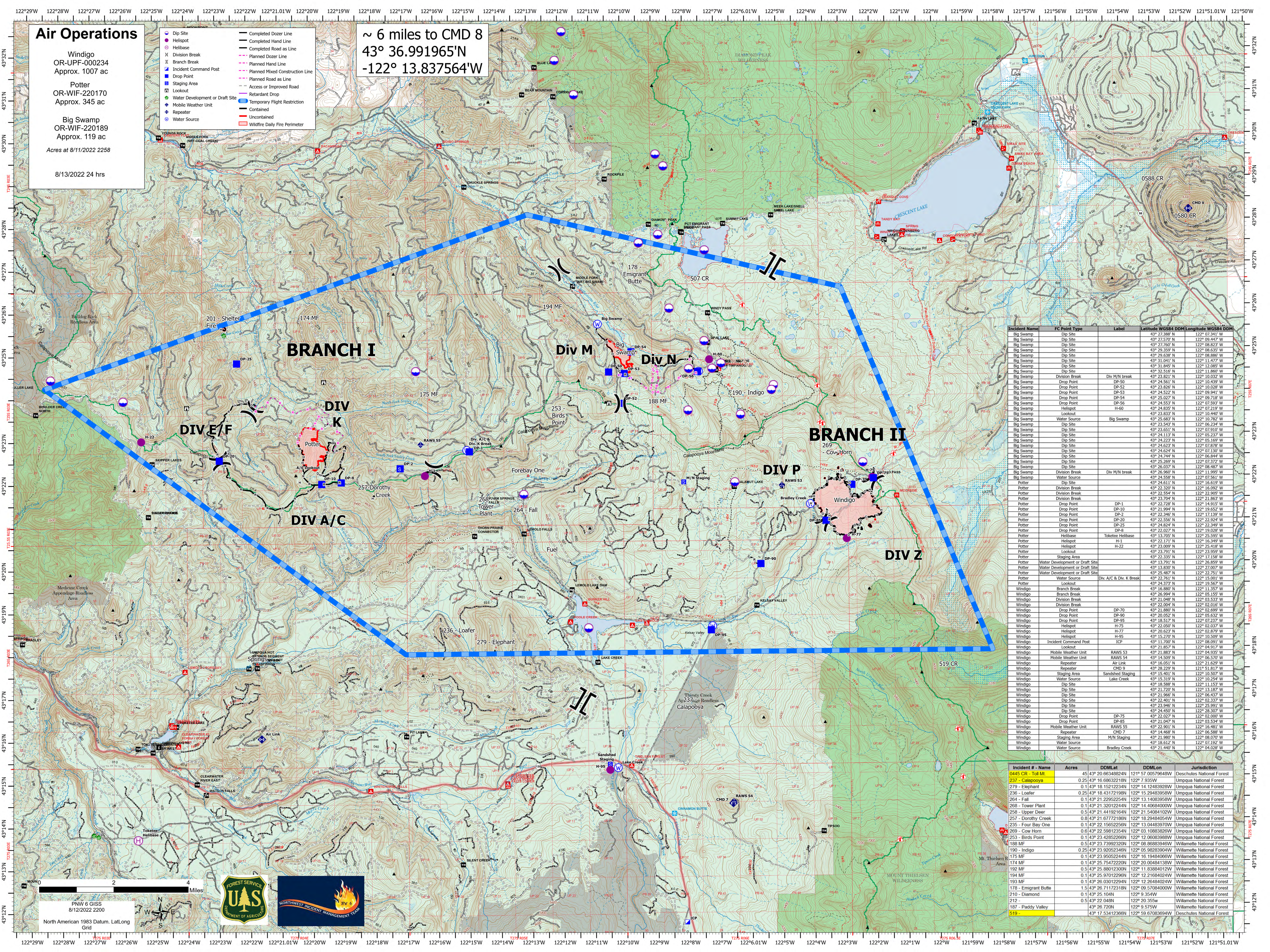
Big Swamp  
OR-WIF-220189  
Approx. 119 ac

Acres at 8/11/2022 2258

8/13/2022 24 hrs

- Dip Site
- Helispot
- Helibase
- X Division Break
- I Branch Break
- I Incident Command Post
- Drop Point
- Staging Area
- Lookout
- Water Development or Draft Site
- ♦ Mobile Weather Unit
- ♦ Repeater
- ♦ Water Source
- Completed Dozer Line
- Completed Hand Line
- Completed Road as Line
- Planned Dozer Line
- Planned Hand Line
- Planned Mixed Construction Line
- Planned Road as Line
- Access or Improved Road
- Retardant Drop
- Temporary Flight Restriction
- Contained
- Uncontained
- Wildfire Daily Fire Perimeter

~ 6 miles to CMD 8  
43° 36.991965'N  
-122° 13.837564'W



Incident Name	FC Point Type	Label	Latitude WGS84 DDM	Longitude WGS84 DDM
Big Swamp	Dip Site		43° 27.388' N	122° 07.341' W
Big Swamp	Dip Site		43° 27.760' N	122° 09.447' W
Big Swamp	Dip Site		43° 27.760' N	122° 08.823' W
Big Swamp	Dip Site		43° 29.359' N	122° 08.635' W
Big Swamp	Dip Site		43° 29.358' N	122° 08.886' W
Big Swamp	Dip Site		43° 31.041' N	122° 11.477' W
Big Swamp	Dip Site		43° 31.845' N	122° 12.085' W
Big Swamp	Dip Site		43° 32.516' N	122° 11.860' W
Big Swamp	Division Break	Div M/N break	43° 23.225' N	122° 10.322' W
Big Swamp	Drop Point	DP-50	43° 24.561' N	122° 10.439' W
Big Swamp	Drop Point	DP-52	43° 23.826' N	122° 10.028' W
Big Swamp	Drop Point	DP-53	43° 24.522' N	122° 09.941' W
Big Swamp	Drop Point	DP-54	43° 25.027' N	122° 09.738' W
Big Swamp	Drop Point	DP-56	43° 24.553' N	122° 07.593' W
Big Swamp	Helispot	H-60	43° 24.835' N	122° 07.219' W
Big Swamp	Lookout		43° 23.833' N	122° 10.440' W
Big Swamp	Water Source	Big Swamp	43° 25.322' N	122° 10.782' W
Big Swamp	Dip Site		43° 23.543' N	122° 06.234' W
Big Swamp	Dip Site		43° 23.651' N	122° 07.910' W
Big Swamp	Dip Site		43° 24.113' N	122° 05.237' W
Big Swamp	Dip Site		43° 24.232' N	122° 05.789' W
Big Swamp	Dip Site		43° 24.623' N	122° 07.878' W
Big Swamp	Dip Site		43° 24.624' N	122° 07.130' W
Big Swamp	Dip Site		43° 24.744' N	122° 08.844' W
Big Swamp	Dip Site		43° 25.369' N	122° 07.372' W
Big Swamp	Dip Site		43° 26.037' N	122° 08.487' W
Big Swamp	Division Break	Div M/N break	43° 26.960' N	122° 11.995' W
Big Swamp	Water Source		43° 24.538' N	122° 07.561' W
Potter	Division Break		43° 22.320' N	122° 16.092' W
Potter	Division Break		43° 22.554' N	122° 22.905' W
Potter	Division Break		43° 23.704' N	122° 17.863' W
Potter	Drop Point	DP-10	43° 22.726' N	122° 13.912' W
Potter	Drop Point	DP-2	43° 22.346' N	122° 17.139' W
Potter	Drop Point	DP-20	43° 22.556' N	122° 22.924' W
Potter	Drop Point	DP-25	43° 24.824' N	122° 02.369' W
Potter	Drop Point	DP-8	43° 22.027' N	122° 19.028' W
Potter	Helibase	Toketee Helibase	43° 13.705' N	122° 25.595' W
Potter	Helispot	H-1	43° 22.171' N	122° 16.349' W
Potter	Helispot	H-22	43° 23.029' N	122° 18.619' W
Potter	Lookout		43° 23.791' N	122° 23.959' W
Potter	Staging Area		43° 22.335' N	122° 17.158' W
Potter	Water Development or Draft Site		43° 13.791' N	122° 26.859' W
Potter	Water Development or Draft Site		43° 13.830' N	122° 27.807' W
Potter	Water Development or Draft Site		43° 25.487' N	122° 22.751' W
Potter	Water Source	Div A/C & Div. K Break	43° 22.761' N	122° 15.001' W
Potter	Lookout		43° 24.373' N	122° 19.567' W
Potter	Lookout		43° 24.889' N	122° 11.357' W
Windigo	Branch Break		43° 26.994' N	122° 05.155' W
Windigo	Division Break		43° 03.533' N	122° 03.533' W
Windigo	Division Break		43° 22.504' N	122° 02.016' W
Windigo	Drop Point	DP-70	43° 21.880' N	122° 02.690' W
Windigo	Drop Point	DP-90	43° 20.052' N	122° 05.632' W
Windigo	Drop Point	DP-95	43° 18.517' N	122° 07.237' W
Windigo	Helispot	H-75	43° 22.550' N	122° 02.037' W
Windigo	Helispot	H-77	43° 20.027' N	122° 02.079' W
Windigo	Helispot	H-95	43° 15.270' N	122° 10.599' W
Windigo	Incident Command Post	ICP	43° 11.709' N	122° 08.091' W
Windigo	Lookout		43° 21.857' N	122° 04.919' W
Windigo	Mobile Weather Unit	RAWS 53	43° 21.880' N	122° 04.935' W
Windigo	Mobile Weather Unit	RAWS 54	43° 14.509' N	122° 06.570' W
Windigo	Repeater	Air Link	43° 16.051' N	122° 21.629' W
Windigo	Repeater	CMD 9	43° 28.229' N	122° 18.817' W
Windigo	Staging Area	Sandshed Staging	43° 15.401' N	122° 10.507' W
Windigo	Water Source		43° 15.319' N	122° 10.254' W
Windigo	Dip Site		43° 18.588' N	122° 11.153' W
Windigo	Dip Site		43° 21.720' N	122° 13.370' W
Windigo	Dip Site		43° 21.866' N	122° 06.437' W
Windigo	Dip Site		43° 22.401' N	122° 02.337' W
Windigo	Dip Site		43° 23.946' N	122° 25.991' W
Windigo	Dip Site		43° 24.459' N	122° 06.207' W
Windigo	Drop Point	DP-75	43° 22.027' N	122° 02.000' W
Windigo	Drop Point	DP-85	43° 21.047' N	122° 03.534' W
Windigo	Mobile Weather Unit	RAWS 55	43° 22.501' N	122° 16.481' W
Windigo	Repeater		43° 14.468' N	122° 06.588' W
Windigo	Staging Area	M/N Staging	43° 21.980' N	122° 08.070' W
Windigo	Water Source		43° 18.612' N	122° 07.192' W
Windigo	Water Source	Bradley Creek	43° 21.440' N	122° 04.028' W

Incident # - Name	Acres	DDMLat	DDMLon	Jurisdiction
04AS CR - Tot M	45	43° 20 06348824N	121° 57 00579648W	Deschutes National Forest
237 - Calapooya	0.25	43° 16 68632218N	122° 7 935W	Umpqua National Forest
279 - Elephant	0.1	43° 18 15212234N	122° 14 12483928W	Umpqua National Forest
236 - Loafer	0.25	43° 18 43172198N	122° 15 29483958W	Umpqua National Forest
264 - Fall	0.1	43° 21 22952254N	122° 13 14083958W	Umpqua National Forest
268 - Tower Plant	0.1	43° 21 32012244N	122° 14 40684000W	Umpqua National Forest
258 - Upper Deer	0.5	43° 21 44192164N	122° 21 54084102W	Umpqua National Forest
257 - Dorothy Creek	0.8	43° 21 6772186N	122° 18 29484054W	Umpqua National Forest
255 - Four Bay One	0.1	43° 22 15682260N	122° 13 04483970W	Umpqua National Forest
269 - Cow Horn	0.6	43° 22 59812354N	122° 03 10883820W	Umpqua National Forest
253 - Birds Point	0.1	43° 23 42852266N	122° 12 09083988W	Umpqua National Forest
188 MF	0.5	43° 23 73992320N	122° 08 8883946W	Willamette National Forest
190 - Indigo	0.25	43° 23 92052346N	122° 05 98283904W	Willamette National Forest
175 MF	0.1	43° 23 95052244N	122° 16 19484060W	Willamette National Forest
174 MF	0.1	43° 25 75472220N	122° 20 00484138W	Willamette National Forest
192 MF	0.5	43° 25 88012300N	122° 11 83884012W	Willamette National Forest
194 MF	0.1	43° 25 97012296N	122° 12 21684024W	Willamette National Forest
193 MF	0.1	43° 26 03012294N	122° 12 25494024W	Willamette National Forest
178 - Emigrant Butte	1.5	43° 26 7172318N	122° 05 77084000W	Willamette National Forest
210 - Diamond	0.1	43° 25 104N	122° 9 354W	Willamette National Forest
212 -	0.5	43° 22 048N	122° 20 355W	Willamette National Forest
187 - Paddy Valley	43° 26 720N	122° 9 575W	Willamette National Forest	
519 -	43° 17 53412366N	122° 59 67083694W	Deschutes National Forest	

PNW 6 GISS  
8/12/2022 2200

North American 1983 Datum, Lat,Long Grid