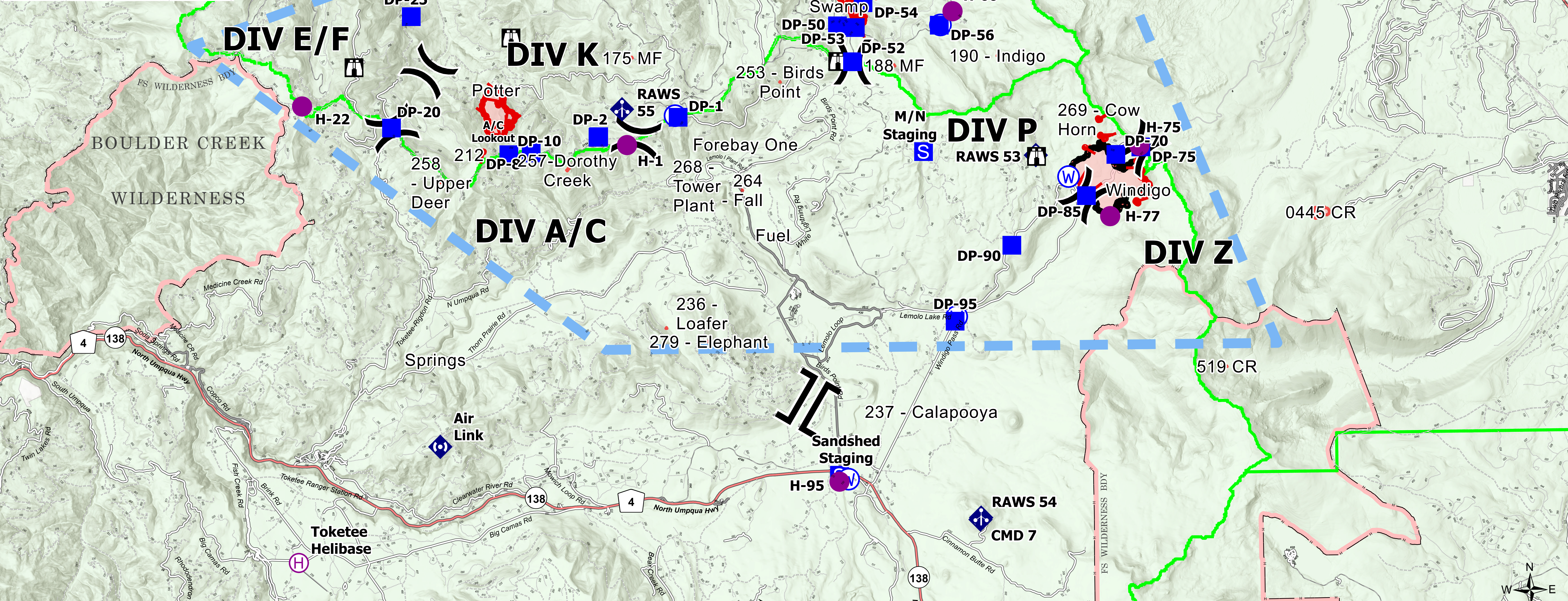


Incident # - Name	Acres	DDMLat	DDMLon
519 CR	0	43° 17.53412366N	121° 59.67083694W
0445 CR - Toll Mt.	45	43° 20.66348824N	121° 57.00579648W
507 CR	0	43° 26.642N	122° 07.49483964W
237 - Calapooya	0.25	43° 16.68632218N	122° 7.935W
279 - Elephant	0.1	43° 30.2450N	122° 23.5889
236 - Loafer	0.25	43° 18.43172198N	122° 15.29483958W
264 - Fall	0.1	43° 21.22952254N	122° 13.14083958W
268 - Tower Plant	0.1	43° 21.32012244N	122° 14.40684000W
258 - Upper Deer	0.5	43° 21.44192164N	122° 21.54084102W
257 - Dorothy Creek	0.8	43° 21.67772186N	122° 18.29484054W
235 - Four Bay One	0.1	43° 22.15652256N	122° 13.04483970W
269 - Cow Horn	0.6	43° 22.59812354N	122° 03.10883826W
253 - Birds Point	0.1	43° 23.42852266N	122° 12.06083988W
188 MF	0.5	43° 23.73992320N	122° 08.86883946W
190 - Indigo	0.25	43° 23.92052346N	122° 05.98283904W
175 MF	0.1	43° 23.95052244N	122° 16.19484066W
174 MF	0.1	43° 25.75472220N	122° 20.00484138W
192 MF	0.5	43° 25.88012300N	122° 11.83884012W
194 MF	0.1	43° 25.97012296N	122° 12.21684024W
193 MF	0.1	43° 26.03012294N	122° 12.26484024W
178 - Emigrant Butte	1.5	43° 26.71172318N	122° 09.57084000W
210 - Diamond	0.1	43° 25.104N	122° 9.354W
212	0.5	43° 22.048N	122° 20.355W
Paddy Valley		43° 26.720N	122° 9.575W



PNW6
8/12/2022 2151
North American 1983 Datum, Lat/Long Grid

- Helispot
- Ⓜ Helibase
- ⊗ Division Break
- ⌚ Branch Break
- 📍 Incident Command Post
- 📍 Drop Point
- 📍 Staging Area
- 📍 Lookout
- 📍 Mobile Weather Unit
- 📍 Repeater
- 📍 Water Source
- 📍 Wildfire Daily Fire Perimeter
- 📍 Secondary Highway
- 📍 Paved Roads
- 📍 Dirt (Not Paved)
- 📍 Paved Road
- 📍 Gravel Road
- 📍 Dirt Roads
- 📍 Unimproved Roads
- 📍 Closed Roads
- 📍 Runway
- 📍 Administrative FS Boundary
- 📍 Federal Wilderness Boundary
- 📍 Forest Service Land



Briefing Map

Windigo OR-UPF-000234
Potter OR-WIF-220170
Big Swamp OR-WIF-220189

8/12/22 24 hrs

1471 Acres at 8/11/2022 2258

