

Communications

Windigo
OR-UPF-000234
Approx. 1007 ac

Potter
OR-WIF-220170
Approx. 345 ac

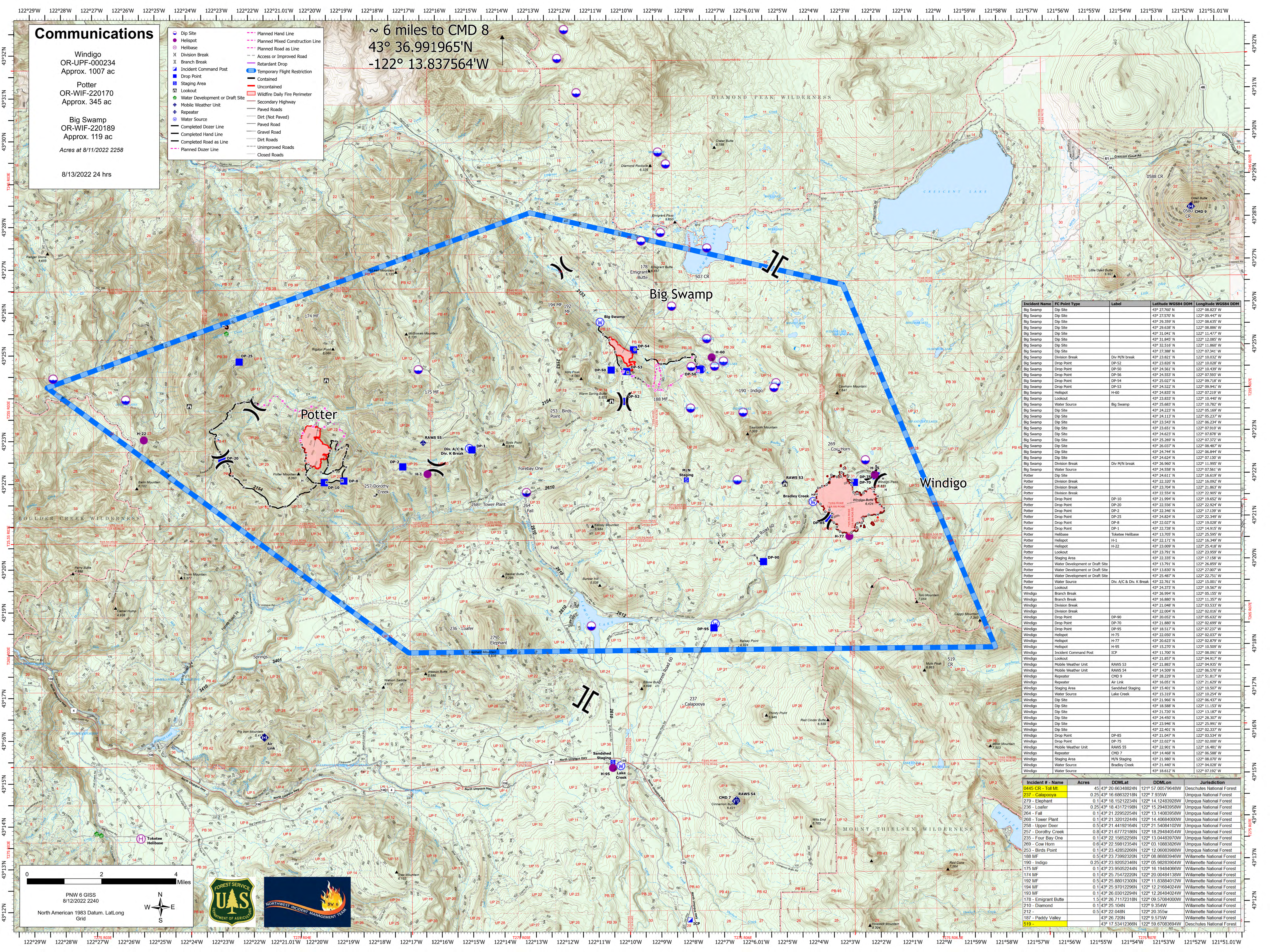
Big Swamp
OR-WIF-220189
Approx. 119 ac

Acres at 8/11/2022 2258

8/13/2022 24 hrs

	Dip Site		Planned Hand Line
	Helispot		Planned Mixed Construction Line
	Helibase		Planned Road as Line
	Division Break		Access or Improved Road
	Branch Break		Retardant Drop
	Incident Command Post		Temporary Flight Restriction
	Drop Point		Contained
	Staging Area		Uncontained
	Lookout		Wildfire Daily Fire Perimeter
	Water Development or Draft Site		Secondary Highway
	Mobile Weather Unit		Paved Roads
	Repeater		Dirt (Not Paved)
	Water Source		Gravel Road
	Completed Dozer Line		Dirt Roads
	Completed Hand Line		Unimproved Roads
	Completed Road as Line		Closed Roads
	Planned Dozer Line		

~ 6 miles to CMD 8
43° 36.991965'N
-122° 13.837564'W



Incident Name	FC Point Type	Label	Latitude WGS84 DDM	Longitude WGS84 DDM
Big Swamp	Dip Site		43° 27.760' N	122° 08.823' W
Big Swamp	Dip Site		43° 27.570' N	122° 09.447' W
Big Swamp	Dip Site		43° 29.359' N	122° 08.635' W
Big Swamp	Dip Site		43° 29.638' N	122° 08.868' W
Big Swamp	Dip Site		43° 31.941' N	122° 11.477' W
Big Swamp	Dip Site		43° 31.845' N	122° 12.085' W
Big Swamp	Dip Site		43° 32.516' N	122° 11.860' W
Big Swamp	Dip Site		43° 27.388' N	122° 07.341' W
Big Swamp	Division Break	Div M/N break	43° 23.821' N	122° 10.032' W
Big Swamp	Drop Point	DP-52	43° 24.826' N	122° 10.028' W
Big Swamp	Drop Point	DP-50	43° 24.561' N	122° 10.149' W
Big Swamp	Drop Point	DP-56	43° 24.553' N	122° 09.593' W
Big Swamp	Drop Point	DP-54	43° 25.027' N	122° 09.718' W
Big Swamp	Drop Point	DP-53	43° 24.522' N	122° 09.941' W
Big Swamp	Helispot	H-60	43° 24.835' N	122° 07.219' W
Big Swamp	Lookout		43° 23.833' N	122° 06.568' W
Big Swamp	Water Source	Big Swamp	43° 25.683' N	122° 10.782' W
Big Swamp	Dip Site		43° 24.223' N	122° 05.169' W
Big Swamp	Dip Site		43° 24.113' N	122° 05.237' W
Big Swamp	Dip Site		43° 23.543' N	122° 06.234' W
Big Swamp	Dip Site		43° 23.651' N	122° 07.910' W
Big Swamp	Dip Site		43° 24.623' N	122° 07.372' W
Big Swamp	Dip Site		43° 25.269' N	122° 07.372' W
Big Swamp	Dip Site		43° 26.037' N	122° 08.487' W
Big Swamp	Dip Site		43° 24.744' N	122° 06.844' W
Big Swamp	Dip Site		43° 24.624' N	122° 07.130' W
Big Swamp	Division Break	Div M/N break	43° 26.960' N	122° 11.995' W
Big Swamp	Water Source		43° 24.558' N	122° 06.568' W
Big Swamp	Dip Site		43° 24.611' N	122° 12.659' W
Potter	Division Break		43° 22.320' N	122° 16.092' W
Potter	Division Break		43° 23.704' N	122° 21.863' W
Potter	Division Break		43° 22.554' N	122° 22.905' W
Potter	Drop Point	DP-10	43° 21.994' N	122° 19.652' W
Potter	Drop Point	DP-20	43° 22.556' N	122° 22.524' W
Potter	Drop Point	DP-2	43° 22.346' N	122° 17.139' W
Potter	Drop Point	DP-25	43° 24.824' N	122° 22.349' W
Potter	Drop Point	DP-8	43° 22.027' N	122° 10.028' W
Potter	Drop Point	DP-1	43° 22.728' N	122° 14.915' W
Potter	Helibase	Toketee Helibase	43° 13.705' N	122° 25.595' W
Potter	Helispot	H-1	43° 23.171' N	122° 16.562' W
Potter	Helispot	H-22	43° 23.009' N	122° 25.418' W
Potter	Lookout		43° 23.791' N	122° 23.959' W
Potter	Staging Area		43° 22.335' N	122° 17.158' W
Potter	Water Development or Draft Site		43° 13.791' N	122° 26.859' W
Potter	Water Development or Draft Site		43° 13.830' N	122° 22.007' W
Potter	Water Source		43° 25.487' N	122° 15.001' W
Potter	Water Source	Div. A/C & Div. K Break	43° 22.761' N	122° 15.001' W
Potter	Lookout		43° 24.973' N	122° 19.567' W
Windigo	Branch Break		43° 26.994' N	122° 05.155' W
Windigo	Branch Break		43° 16.880' N	122° 11.357' W
Windigo	Division Break		43° 21.048' N	122° 03.535' W
Windigo	Division Break		43° 22.004' N	122° 02.016' W
Windigo	Drop Point	DP-60	43° 20.052' N	122° 05.632' W
Windigo	Drop Point	DP-70	43° 21.880' N	122° 02.699' W
Windigo	Drop Point	DP-95	43° 18.517' N	122° 07.227' W
Windigo	Helispot	H-75	43° 22.050' N	122° 02.037' W
Windigo	Helispot	H-77	43° 20.623' N	122° 02.879' W
Windigo	Helispot	H-95	43° 15.270' N	122° 05.509' W
Windigo	Incident Command Post	ICP	43° 11.700' N	122° 08.091' W
Windigo	Lookout		43° 21.857' N	122° 04.917' W
Windigo	Mobile Weather Unit	RAWS 53	43° 21.883' N	122° 04.935' W
Windigo	Mobile Weather Unit	RAWS 54	43° 14.509' N	122° 06.570' W
Windigo	Repeater	CMD 9	43° 28.229' N	121° 51.817' W
Windigo	Repeater	Air Link	43° 16.651' N	122° 16.621' W
Windigo	Staging Area	Sanded Staging	43° 15.401' N	122° 10.507' W
Windigo	Water Source	Lake Creek	43° 15.319' N	122° 10.254' W
Windigo	Dip Site		43° 21.966' N	122° 06.437' W
Windigo	Dip Site		43° 18.588' N	122° 11.153' W
Windigo	Dip Site		43° 21.720' N	122° 13.187' W
Windigo	Dip Site		43° 24.459' N	122° 06.307' W
Windigo	Dip Site		43° 23.946' N	122° 25.991' W
Windigo	Dip Site		43° 22.401' N	122° 02.337' W
Windigo	Drop Point	DP-85	43° 21.047' N	122° 03.534' W
Windigo	Drop Point	DP-75	43° 22.027' N	122° 02.000' W
Windigo	Mobile Weather Unit	RAWS 55	43° 22.901' N	122° 16.481' W
Windigo	Repeater	CMD 7	43° 14.465' N	122° 14.465' W
Windigo	Staging Area	M/N Staging	43° 21.980' N	122° 08.070' W
Windigo	Water Source	Bradley Creek	43° 21.440' N	122° 04.028' W
Windigo	Water Source		43° 18.612' N	122° 07.192' W

Incident #	Name	Acres	DDMLat	DDMLon	Jurisdiction
0445 CR - Toll Mt		45	43° 20' 06.3480241N	121° 57' 00.5794949W	Deschutes National Forest
237 - Calapooya		0.25	43° 16' 88.6322181N	122° 7' 9.93551W	Umpqua National Forest
279 - Elephant		0.1	43° 18' 15.2122341N	122° 14' 12.4839282W	Umpqua National Forest
236 - Loafer		0.25	43° 18' 43.1721981N	122° 15' 29.4839585W	Umpqua National Forest
264 - Fall		0.1	43° 21' 22.9522541N	122° 13' 14.0683958W	Umpqua National Forest
268 - Tower Plant		0.1	43° 21' 32.0122441N	122° 11' 40.6840000W	Umpqua National Forest
258 - Upper Deer		0.5	43° 21' 44.1921641N	122° 21' 54.0841020W	Umpqua National Forest
257 - Dorothy Creek		0.8	43° 21' 07.7219811N	122° 18' 29.4625410W	Umpqua National Forest
235 - Four Bay One		0.1	43° 22' 15.6522551N	122° 11' 04.4839700W	Umpqua National Forest
289 - Cow Horn		0.6	43° 22' 58.6123541N	122° 03' 10.8838262W	Umpqua National Forest
253 - Birds Point		0.1	43° 23' 4.285226611N	122° 12' 06.0839888W	Umpqua National Forest
188 MF		0.5	43° 23' 7.399232011N	122° 08' 86.8683946W	Willamette National Forest
190 - Indigo		0.25	43° 23' 9.205234611N	122° 05' 98.2839040W	Willamette National Forest
175 MF		0.1	43° 23' 9.505224411N	122° 16' 19.4840666W	Willamette National Forest
174 MF		0.1	43° 25' 7.541222011N	122° 20' 0.0484138W	Willamette National Forest
192 MF		0.5	43° 25' 8.8012230011N	122° 11' 53.8401200W	Willamette National Forest
194 MF		0.1	43° 25' 9.701229811N	122° 12' 21.6840240W	Willamette National Forest
193 MF		0.1	43° 26' 0.301229411N	122° 12' 26.4840240W	Willamette National Forest
178 - Emigrant Butte		1.5	43° 26' 7.117231811N	122° 09' 57.0840000W	Willamette National Forest
210 - Diamond		0.1	43° 25' 10.44N	122° 9' 35.44W	Willamette National Forest
212 -		0.5	43° 22' 0.4881N	122° 20' 35.50W	Willamette National Forest
187 - Paddy Valley			43° 26' 7.20N	122° 9' 57.57W	Willamette National Forest
519 -			43° 17' 5.341236611N	122° 59' 67.0836940W	Deschutes National Forest

0 2 4 Miles

PNW 6 GISS
8/12/2022 2240

North American 1983 Datum, Lat,Long Grid

