

Air Operations

Windigo
OR-UPF-000234
Approx. 1007 ac

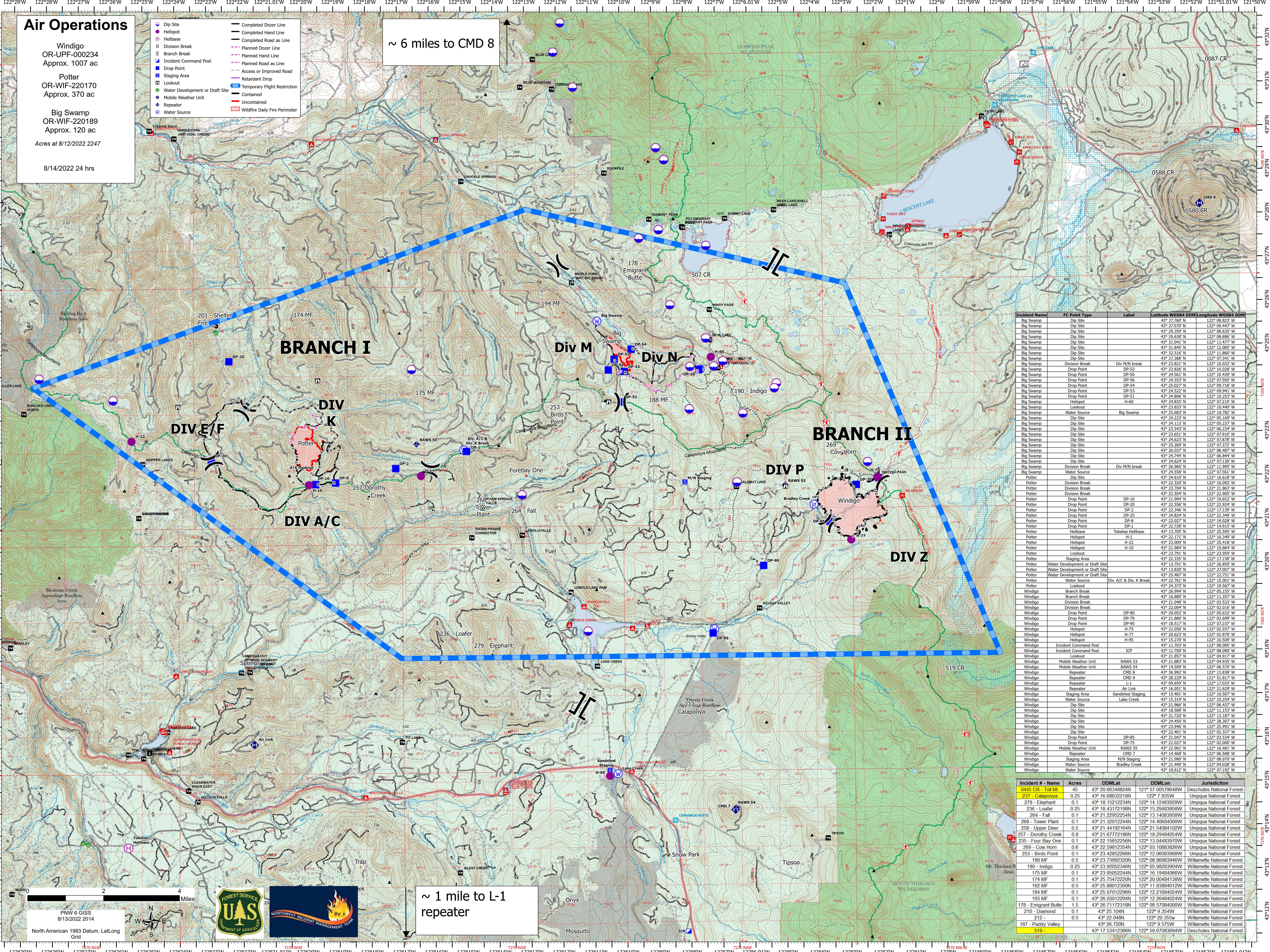
Potter
OR-WIF-220170
Approx. 370 ac

Big Swamp
OR-WIF-220189
Approx. 120 ac

Acres at 8/12/2022 24hrs

- Dip Site
- Helispot
- Helibase
- X Division Break
- I Branch Break
- Incident Command Post
- Drop Point
- Staging Area
- Lookout
- Water Development or Draft Site
- Mobile Weather Unit
- Repeater
- Water Source
- Completed Dozer Line
- Completed Hand Line
- Completed Road as Line
- Planned Dozer Line
- Planned Hand Line
- Planned Road as Line
- Access or Improved Road
- Retardant Drop
- Temporary Flight Restriction
- Contained
- Uncontained
- Wildfire Daily Fire Perimeter

~ 6 miles to CMD 8



| Incident Name | FC Point Type | Label | Latitude WGS84 DDM | Longitude WGS84 DDM |
|---------------|---------------------------------|---------------------------------|--------------------|---------------------|
| Big Swamp | Dip Site | DP-25 | 43° 27.760' N | 122° 08.823' W |
| Big Swamp | Dip Site | DP-26 | 43° 27.570' N | 122° 09.447' W |
| Big Swamp | Dip Site | DP-27 | 43° 29.355' N | 122° 08.635' W |
| Big Swamp | Dip Site | DP-28 | 43° 29.638' N | 122° 08.886' W |
| Big Swamp | Dip Site | DP-29 | 43° 31.041' N | 122° 11.477' W |
| Big Swamp | Dip Site | DP-30 | 43° 31.845' N | 122° 12.085' W |
| Big Swamp | Dip Site | DP-31 | 43° 33.116' N | 122° 11.869' W |
| Big Swamp | Dip Site | DP-32 | 43° 27.388' N | 122° 07.341' W |
| Big Swamp | Division Break | Div M/N break | 43° 23.821' N | 122° 10.032' W |
| Big Swamp | Drop Point | DP-52 | 43° 23.826' N | 122° 10.028' W |
| Big Swamp | Drop Point | DP-53 | 43° 24.541' N | 122° 04.543' W |
| Big Swamp | Drop Point | DP-54 | 43° 24.553' N | 122° 07.593' W |
| Big Swamp | Drop Point | DP-55 | 43° 25.027' N | 122° 09.718' W |
| Big Swamp | Drop Point | DP-56 | 43° 24.522' N | 122° 09.941' W |
| Big Swamp | Drop Point | DP-57 | 43° 24.835' N | 122° 07.353' W |
| Big Swamp | Helispot | H-60 | 43° 24.835' N | 122° 07.219' W |
| Big Swamp | Lookout | Lookout | 43° 23.833' N | 122° 10.440' W |
| Big Swamp | Water Source | Big Swamp | 43° 25.683' N | 122° 10.762' W |
| Big Swamp | Dip Site | DP-58 | 43° 24.242' N | 122° 05.153' W |
| Big Swamp | Dip Site | DP-59 | 43° 24.113' N | 122° 05.237' W |
| Big Swamp | Dip Site | DP-60 | 43° 23.543' N | 122° 06.234' W |
| Big Swamp | Dip Site | DP-61 | 43° 23.651' N | 122° 07.910' W |
| Big Swamp | Dip Site | DP-62 | 43° 24.623' N | 122° 07.833' W |
| Big Swamp | Dip Site | DP-63 | 43° 25.269' N | 122° 07.372' W |
| Big Swamp | Dip Site | DP-64 | 43° 26.037' N | 122° 08.487' W |
| Big Swamp | Dip Site | DP-65 | 43° 24.744' N | 122° 06.844' W |
| Big Swamp | Dip Site | DP-66 | 43° 24.824' N | 122° 05.932' W |
| Big Swamp | Division Break | Div M/N break | 43° 26.960' N | 122° 11.995' W |
| Big Swamp | Water Source | Water Source | 43° 24.558' N | 122° 07.561' W |
| Potter | Dip Site | DP-10 | 43° 22.554' N | 122° 22.905' W |
| Potter | Division Break | Div A/C & Div. K Break | 43° 22.554' N | 122° 22.905' W |
| Potter | Drop Point | DP-10 | 43° 21.994' N | 122° 19.652' W |
| Potter | Drop Point | DP-20 | 43° 22.956' N | 122° 02.594' W |
| Potter | Drop Point | DP-2 | 43° 22.346' N | 122° 17.139' W |
| Potter | Drop Point | DP-25 | 43° 24.824' N | 122° 22.349' W |
| Potter | Drop Point | DP-8 | 43° 22.027' N | 122° 19.928' W |
| Potter | Drop Point | DP-1 | 43° 22.728' N | 122° 04.912' W |
| Potter | Helibase | Tokete Helibase | 43° 13.705' N | 122° 25.595' W |
| Potter | Helispot | H-1 | 43° 22.171' N | 122° 16.349' W |
| Potter | Helispot | H-22 | 43° 23.009' N | 122° 25.418' W |
| Potter | Helispot | H-10 | 43° 21.884' N | 122° 08.864' W |
| Potter | Lookout | Lookout | 43° 23.791' N | 122° 23.959' W |
| Potter | Staging Area | Staging Area | 43° 22.335' N | 122° 17.158' W |
| Potter | Water Development or Draft Site | Water Development or Draft Site | 43° 13.791' N | 122° 26.859' W |
| Potter | Water Development or Draft Site | Water Development or Draft Site | 43° 13.939' N | 122° 27.007' W |
| Potter | Water Development or Draft Site | Water Development or Draft Site | 43° 25.487' N | 122° 27.751' W |
| Potter | Water Source | Div. A/C & Div. K Break | 43° 22.761' N | 122° 15.001' W |
| Potter | Lookout | Lookout | 43° 24.373' N | 122° 19.567' W |
| Potter | Lookout | Lookout | 43° 26.094' N | 122° 05.153' W |
| Windigo | Branch Break | Branch Break | 43° 16.880' N | 122° 11.357' W |
| Windigo | Division Break | Division Break | 43° 21.048' N | 122° 03.533' W |
| Windigo | Division Break | Division Break | 43° 22.004' N | 122° 02.016' W |
| Windigo | Drop Point | DP-90 | 43° 20.852' N | 122° 09.632' W |
| Windigo | Drop Point | DP-70 | 43° 21.880' N | 122° 02.699' W |
| Windigo | Drop Point | DP-95 | 43° 18.517' N | 122° 07.237' W |
| Windigo | Helispot | H-75 | 43° 22.950' N | 122° 02.937' W |
| Windigo | Helispot | H-77 | 43° 20.823' N | 122° 02.878' W |
| Windigo | Helispot | H-95 | 43° 15.270' N | 122° 10.509' W |
| Windigo | Incident Command Post | ICP | 43° 11.703' N | 122° 08.085' W |
| Windigo | Incident Command Post | ICP | 43° 11.700' N | 122° 08.960' W |
| Windigo | Lookout | Lookout | 43° 21.857' N | 122° 04.917' W |
| Windigo | Mobile Weather Unit | RAWS 53 | 43° 21.883' N | 122° 04.935' W |
| Windigo | Mobile Weather Unit | RAWS 54 | 43° 14.509' N | 122° 05.570' W |
| Windigo | Repeater | CMD 8 | 43° 36.997' N | 122° 13.878' W |
| Windigo | Repeater | CMD 9 | 43° 28.229' N | 121° 51.817' W |
| Windigo | Repeater | L-1 | 43° 09.659' N | 122° 17.033' W |
| Windigo | Repeater | Air Link | 43° 16.051' N | 122° 21.629' W |
| Windigo | Staging Area | Sandshed Staging | 43° 15.401' N | 122° 05.507' W |
| Windigo | Water Source | Lake Creek | 43° 15.319' N | 122° 10.254' W |
| Windigo | Dip Site | Dip Site | 43° 21.966' N | 122° 06.437' W |
| Windigo | Dip Site | Dip Site | 43° 18.588' N | 122° 11.153' W |
| Windigo | Dip Site | Dip Site | 43° 23.720' N | 122° 13.727' W |
| Windigo | Dip Site | Dip Site | 43° 24.450' N | 122° 28.307' W |
| Windigo | Dip Site | Dip Site | 43° 23.946' N | 122° 25.991' W |
| Windigo | Dip Site | Dip Site | 43° 22.401' N | 122° 02.237' W |
| Windigo | Drop Point | DP-85 | 43° 21.947' N | 122° 03.594' W |
| Windigo | Drop Point | DP-75 | 43° 22.027' N | 122° 02.000' W |
| Windigo | Mobile Weather Unit | RAWS 55 | 43° 22.901' N | 122° 16.481' W |
| Windigo | Repeater | CMD 7 | 43° 14.468' N | 122° 06.588' W |
| Windigo | Staging Area | M/N Staging | 43° 21.860' N | 122° 04.970' W |
| Windigo | Water Source | Bradley Creek | 43° 21.440' N | 122° 04.028' W |
| Windigo | Water Source | Water Source | 43° 18.612' N | 122° 07.192' W |

| Incident # - Name | Acres | DDMLat | DDMLon | Jurisdiction |
|----------------------|-------|------------------|-------------------|----------------------------|
| 0445 CR - Toll Mt | 45 | 43° 20.66348824N | 121° 57.00579648W | Deschutes National Forest |
| 237 - Calapooya | 0.25 | 43° 16.68632218N | 122° 7.9350W | Umpqua National Forest |
| 272 - Clephant | 0.1 | 43° 18.15243234N | 122° 14.12483920W | Umpqua National Forest |
| 236 - Loafer | 0.25 | 43° 18.43172198N | 122° 15.29483958W | Umpqua National Forest |
| 264 - Fall | 0.1 | 43° 21.22952254N | 122° 13.14083958W | Umpqua National Forest |
| 268 - Tower Plant | 0.1 | 43° 21.32012244N | 122° 14.40684000W | Umpqua National Forest |
| 268 - Upper Deer | 0.5 | 43° 21.44192164N | 122° 21.54084102W | Umpqua National Forest |
| 257 - Dorothy Creek | 0.8 | 43° 21.6772186N | 122° 18.29484054W | Umpqua National Forest |
| 235 - Four Bay One | 0.1 | 43° 22.15652256N | 122° 13.04483970W | Umpqua National Forest |
| 269 - Cow Horn | 0.6 | 43° 22.59812354N | 122° 05.10883800W | Umpqua National Forest |
| 253 - Birds Point | 0.1 | 43° 23.42852298N | 122° 12.08083980W | Umpqua National Forest |
| 188 MF | 0.5 | 43° 23.73992320N | 122° 08.86883940W | Willamette National Forest |
| 190 - Indigo | 0.25 | 43° 23.92052346N | 122° 05.98283904W | Willamette National Forest |
| 175 MF | 0.1 | 43° 23.95052244N | 122° 16.19484066W | Willamette National Forest |
| 174 MF | 0.1 | 43° 25.75472220N | 122° 20.00484138W | Willamette National Forest |
| 192 MF | 0.5 | 43° 25.88012300N | 122° 11.83884012W | Willamette National Forest |
| 194 MF | 0.1 | 43° 25.97012296N | 122° 12.21684024W | Willamette National Forest |
| 193 MF | 0.1 | 43° 26.03012294N | 122° 12.26484024W | Willamette National Forest |
| 178 - Emigrant Butte | 1.5 | 43° 26.71172318N | 122° 09.57084000W | Willamette National Forest |
| 210 - Diamond | 0.1 | 43° 25.104N | 122° 9.354W | Willamette National Forest |
| 212 | 0.5 | 43° 22.048N | 122° 20.355W | Willamette National Forest |
| 187 - Paddy Valley | 0.5 | 43° 26.720N | 122° 9.575W | Willamette National Forest |
| 519 | | 43° 17.53412366N | 122° 59.67083964W | Deschutes National Forest |

~ 1 mile to L-1 repeater

PNW 6 GISS
8/13/2022 2014

North American 1983 Datum, Lat/Long Grid