

# Air Operations

Windigo  
OR-UPF-000234  
Approx. 1007 ac

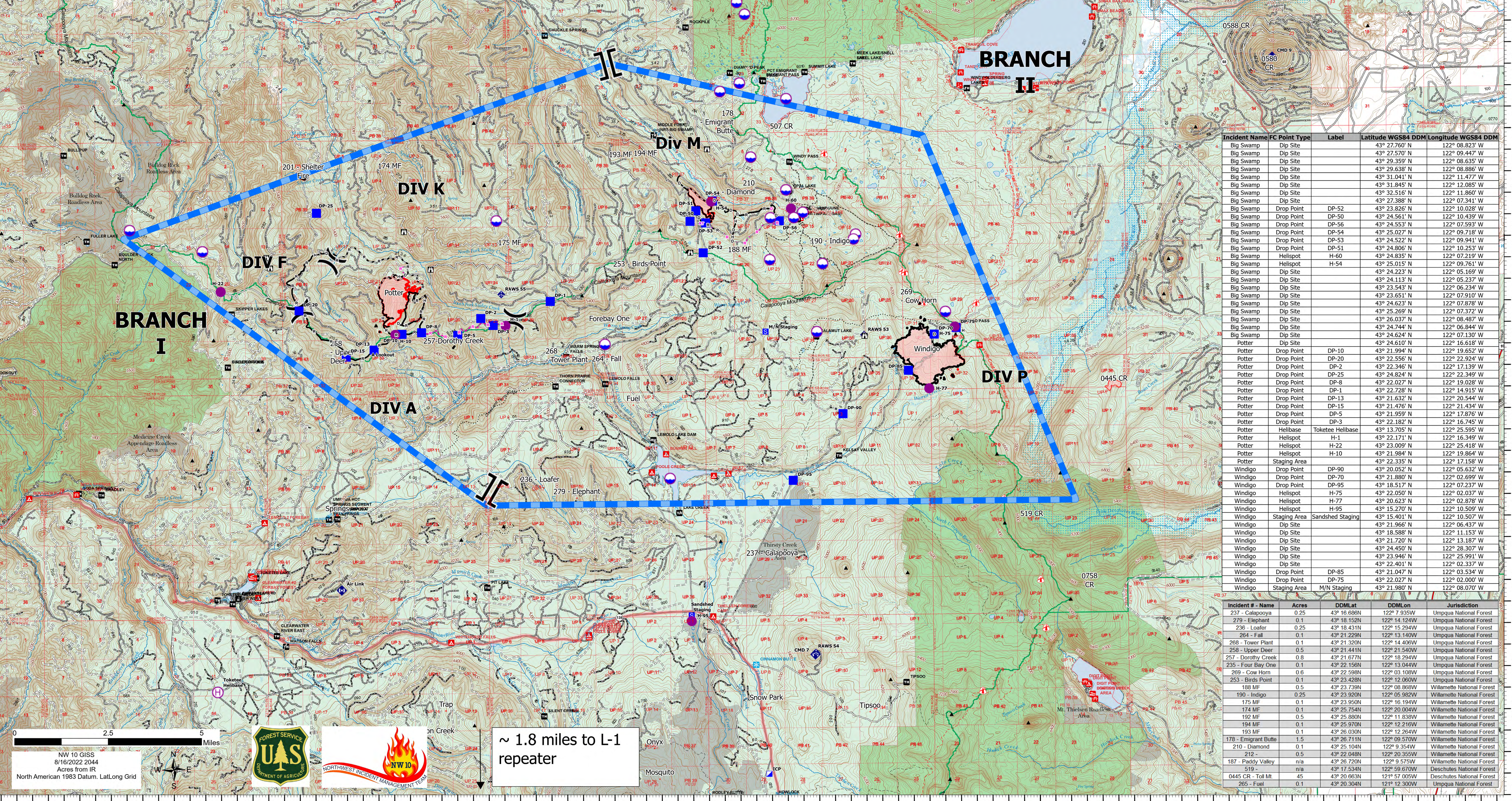
Potter  
OR-WIF-220170  
Approx. 472 ac

Big Swamp  
OR-WIF-220189  
Approx. 121 ac

Acreas at 8/15/2022 2304

8/17/2022 24 hrs

- Dip Site
- Helispot
- X Division Break
- | Branch Break
- Incident Command Post
- Drop Point
- Staging Area
- Lookout
- Mobile Weather Unit
- Repeater
- Completed Dozer Line
- Completed Hand Line
- Completed Road as Line
- Planned Dozer Line
- Planned Road as Line
- Access or Improved Road
- Retardant Drop
- Temporary Flight Restriction
- Wildfire Daily Fire Perimeter



**BRANCH II**

**BRANCH I**

**DIV P**

**DIV M**

**DIV F**

**DIV A**

**DIV K**

NW 10 GISS  
8/16/2022 2044  
Acreas from IR  
North American 1983 Datum, Lat/Long Grid



~ 1.8 miles to L-1  
repeater

Incident Name	FC	Point Type	Label	Latitude WGS84 DDM	Longitude WGS84 DDM
Big Swamp	Dip Site			43° 27.760' N	122° 08.823' W
Big Swamp	Dip Site			43° 27.570' N	122° 09.447' W
Big Swamp	Dip Site			43° 29.359' N	122° 08.635' W
Big Swamp	Dip Site			43° 29.638' N	122° 08.886' W
Big Swamp	Dip Site			43° 31.041' N	122° 11.477' W
Big Swamp	Dip Site			43° 31.845' N	122° 12.085' W
Big Swamp	Dip Site			43° 32.516' N	122° 11.860' W
Big Swamp	Dip Site			43° 27.388' N	122° 07.341' W
Big Swamp	Drop Point		DP-52	43° 23.826' N	122° 06.238' W
Big Swamp	Drop Point		DP-50	43° 24.561' N	122° 10.439' W
Big Swamp	Drop Point		DP-56	43° 24.553' N	122° 07.593' W
Big Swamp	Drop Point		DP-54	43° 25.027' N	122° 09.718' W
Big Swamp	Drop Point		DP-53	43° 24.522' N	122° 09.941' W
Big Swamp	Drop Point		DP-51	43° 24.806' N	122° 10.253' W
Big Swamp	Helispot		H-60	43° 24.835' N	122° 07.219' W
Big Swamp	Helispot		H-54	43° 25.015' N	122° 09.761' W
Big Swamp	Dip Site			43° 24.223' N	122° 05.169' W
Big Swamp	Dip Site			43° 24.113' N	122° 05.237' W
Big Swamp	Dip Site			43° 23.543' N	122° 06.234' W
Big Swamp	Dip Site			43° 23.851' N	122° 07.810' W
Big Swamp	Dip Site			43° 24.623' N	122° 07.878' W
Big Swamp	Dip Site			43° 25.269' N	122° 07.372' W
Big Swamp	Dip Site			43° 26.037' N	122° 08.487' W
Big Swamp	Dip Site			43° 24.744' N	122° 06.844' W
Big Swamp	Dip Site			43° 24.624' N	122° 07.130' W
Potter	Drop Point		DP-10	43° 21.994' N	122° 19.652' W
Potter	Drop Point		DP-20	43° 22.556' N	122° 22.924' W
Potter	Drop Point		DP-2	43° 22.346' N	122° 17.139' W
Potter	Drop Point		DP-25	43° 22.827' N	122° 12.349' W
Potter	Drop Point		DP-8	43° 22.027' N	122° 19.028' W
Potter	Drop Point		DP-1	43° 22.728' N	122° 14.915' W
Potter	Drop Point		DP-13	43° 21.632' N	122° 20.544' W
Potter	Drop Point		DP-15	43° 21.476' N	122° 21.434' W
Potter	Drop Point		DP-5	43° 21.959' N	122° 17.876' W
Potter	Drop Point		DP-3	43° 22.182' N	122° 16.745' W
Potter	Helispot		Toketee Helispot	43° 13.705' N	122° 25.995' W
Potter	Helispot		H-1	43° 22.171' N	122° 16.349' W
Potter	Helispot		H-22	43° 23.009' N	122° 25.418' W
Potter	Helispot		H-10	43° 21.984' N	122° 19.864' W
Potter	Staging Area			43° 22.351' N	122° 17.150' W
Windigo	Drop Point		DP-90	43° 20.052' N	122° 05.632' W
Windigo	Drop Point		DP-70	43° 21.880' N	122° 02.699' W
Windigo	Drop Point		DP-95	43° 18.517' N	122° 07.237' W
Windigo	Helispot		H-75	43° 22.050' N	122° 02.037' W
Windigo	Helispot		H-77	43° 20.623' N	122° 02.878' W
Windigo	Helispot		H-95	43° 15.270' N	122° 10.509' W
Windigo	Staging Area		Sandshed Staging	43° 15.401' N	122° 10.507' W
Windigo	Dip Site			43° 21.966' N	122° 06.437' W
Windigo	Dip Site			43° 18.588' N	122° 11.153' W
Windigo	Dip Site			43° 21.720' N	122° 13.187' W
Windigo	Dip Site			43° 24.650' N	122° 28.307' W
Windigo	Dip Site			43° 23.946' N	122° 25.991' W
Windigo	Dip Site			43° 22.401' N	122° 02.337' W
Windigo	Drop Point		DP-85	43° 21.047' N	122° 03.534' W
Windigo	Drop Point		DP-75	43° 22.027' N	122° 02.000' W
Windigo	Staging Area		M/N Staging	43° 21.980' N	122° 08.070' W

Incident # - Name	Acreas	DDMLat	DDMLon	Jurisdiction
237 - Calapooya	0.25	43° 16.666' N	122° 7.935' W	Umpqua National Forest
238 - Elephant	0.1	43° 18.152' N	122° 14.124' W	Umpqua National Forest
239 - Loafer	0.25	43° 18.431' N	122° 15.254' W	Umpqua National Forest
264 - Fall	0.1	43° 21.140' N	122° 13.140' W	Umpqua National Forest
268 - Tower Plant	0.1	43° 21.320' N	122° 14.406' W	Umpqua National Forest
258 - Upper Deer	0.5	43° 21.441' N	122° 21.540' W	Umpqua National Forest
257 - Dorothy Creek	0.8	43° 21.677' N	122° 18.294' W	Umpqua National Forest
235 - Four Bay One	0.1	43° 22.156' N	122° 13.044' W	Umpqua National Forest
209 - Cow Horn	0.6	43° 22.598' N	122° 03.108' W	Umpqua National Forest
253 - Birds Point	0.1	43° 23.060' N	122° 12.060' W	Umpqua National Forest
188 MF	0.5	43° 23.798' N	122° 08.898' W	Umpqua National Forest
190 - Indigo	0.25	43° 23.920' N	122° 05.982' W	Umpqua National Forest
175 MF	0.1	43° 23.950' N	122° 16.194' W	Umpqua National Forest
174 MF	0.1	43° 25.754' N	122° 20.004' W	Umpqua National Forest
192 MF	0.5	43° 25.800' N	122° 11.838' W	Umpqua National Forest
194 MF	0.1	43° 25.970' N	122° 12.216' W	Umpqua National Forest
193 MF	0.1	43° 26.030' N	122° 12.264' W	Umpqua National Forest
178 - Emigrant Butte	1.5	43° 26.711' N	122° 09.570' W	Umpqua National Forest
210 - Diamond	0.1	43° 25.104' N	122° 9.354' W	Umpqua National Forest
212 -	0.5	43° 22.048' N	122° 20.355' W	Umpqua National Forest
187 - Paddy Valley	n/a	43° 26.720' N	122° 9.575' W	Umpqua National Forest
519 -	n/a	43° 17.534' N	122° 59.670' W	Deschutes National Forest
0445 CR - Toll Mt	45	43° 20.663' N	121° 57.065' W	Deschutes National Forest
295 - Fuel	0.1	43° 20.304' N	121° 12.300' W	Umpqua National Forest